



Newbury-Newburyport – Salisbury Resurfacing and Related Work on Route 1 including the Newburyport Rotary






Public Information Meeting

November 10, 2021 | 7:00 p.m.

Project File No. 608494



Zoom Controls

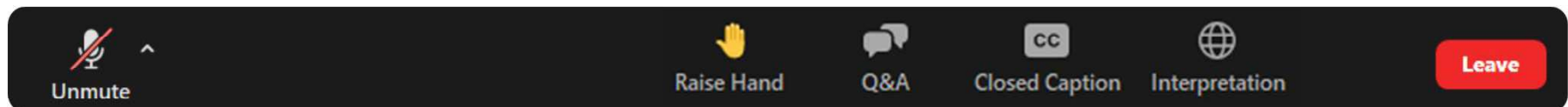
-  • Listen in English
-  • Drop down menu to check microphone and speakers
-  • Use Q&A to type questions and share comments
-  • Raise your hand to ask a question verbally
-  • If you are unable to access the internet or are having technical problems, please call into the meeting at **(833) 548-0282**, Webinar ID: **87079916264**



If you have trouble with the meeting technology during the presentation, please call:

1-888-799-9666

Closed captioning automatically generated by Zoom



Public Meeting Notes and Procedures

Notification of Recording

- This virtual public meeting will be recorded. The Massachusetts Department of Transportation (MassDOT) may choose to retain and distribute the video, still images, audio, and/or chat transcript.
- By continuing attendance with this virtual public meeting, you are consenting to participate in a recorded event.
- All recordings and chat transcript will be considered a public record.
- If you are not comfortable being recorded, please turn off your camera, keep your microphone muted, and refrain from chatting in the transcript box. Otherwise, you may choose to excuse yourself from the meeting.

Important Notes

- Your microphone and webcam are automatically disabled upon entering the meeting.
- The meeting will be open to questions and answers at the end of the presentation.
- Please take time to respond to our survey at the end of the presentation. Your feedback is important.

All questions and comments are welcome and appreciated; however, we do request that you refrain from any disrespectful comments.



Newbury-Newburyport – Salisbury Resurfacing and Related Work on Route 1 including the Newburyport Rotary

Public Information Meeting

November 10, 2021 | 7:00 p.m.

Project File No. 608494



Outreach Conducted for Public Information Meeting

- **MassDOT created flyer and notice for public information meeting**
 - Both the flyer and meeting notice were posted on MassDOT website
 - Flyer and meeting notice shared with Town and City Officials representing Newbury, Newburyport, and Salisbury
- **MassDOT hosted a briefing with representatives from Newbury, Newburyport, and Salisbury**
 - Shared flyer and meeting materials with municipalities for outreach

Agenda

01 Welcome and Opening Remarks

- Mayor Holaday (*City of Newburyport*)
- Lisa DeMeo (*Town of Salisbury*)
- Eric Nova (*MassDOT Project Manager*)

02 Resurfacing Project Overview

- Brian Fallon (*MassDOT District 4*)

03 Roundabout Existing Conditions

- Jessica Lizza (*Howard Stein Hudson*)

04 Roundabout Project Goals

- Jessica Lizza (*HSH*)

05 Roundabout Proposed Design

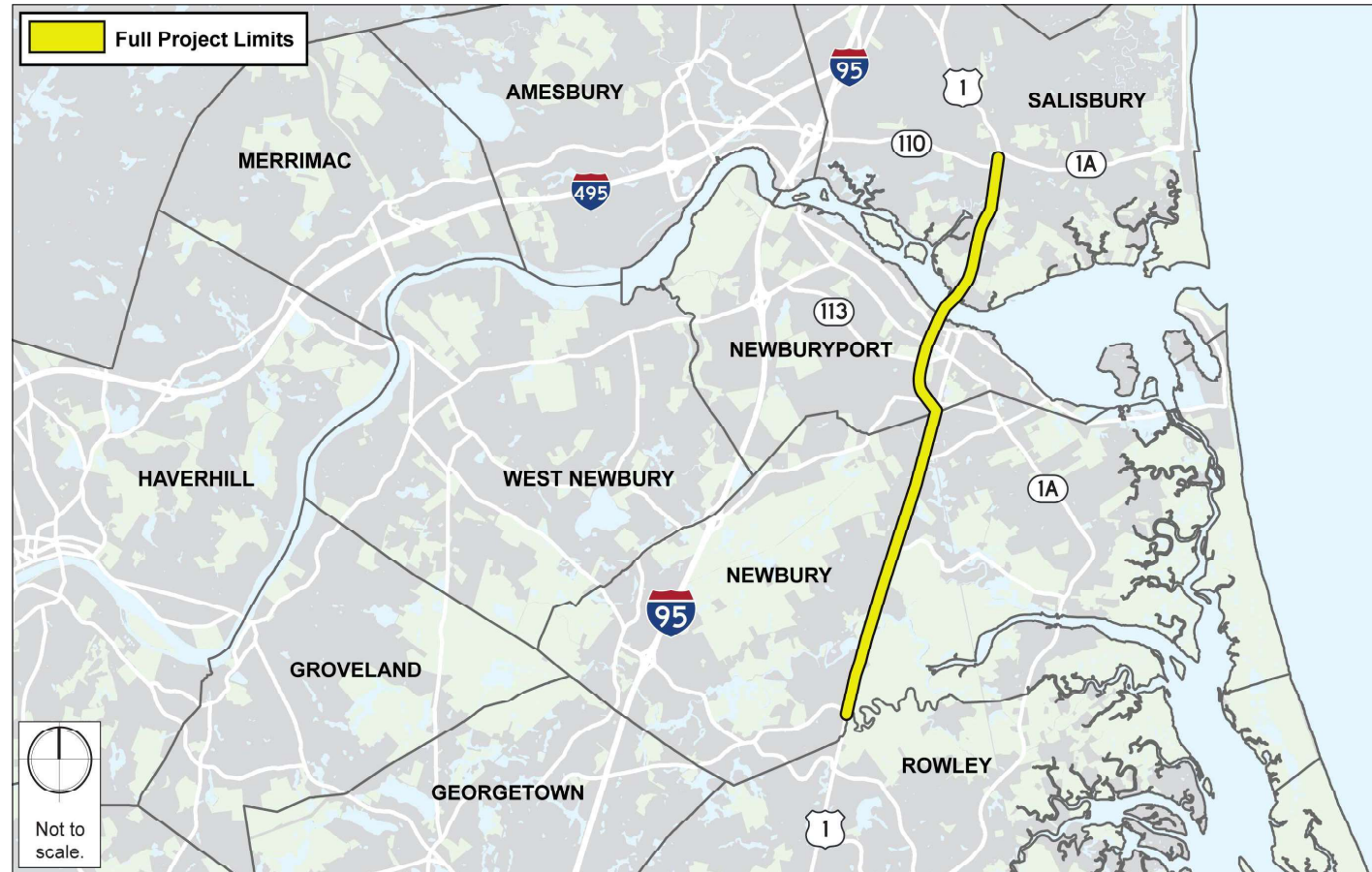
- Jessica Lizza (*HSH*)

06 Project Next Steps

- Eric Nova (*MassDOT Project Manager*)

07 Q&A

- Kit McLewee (*MassDOT*)

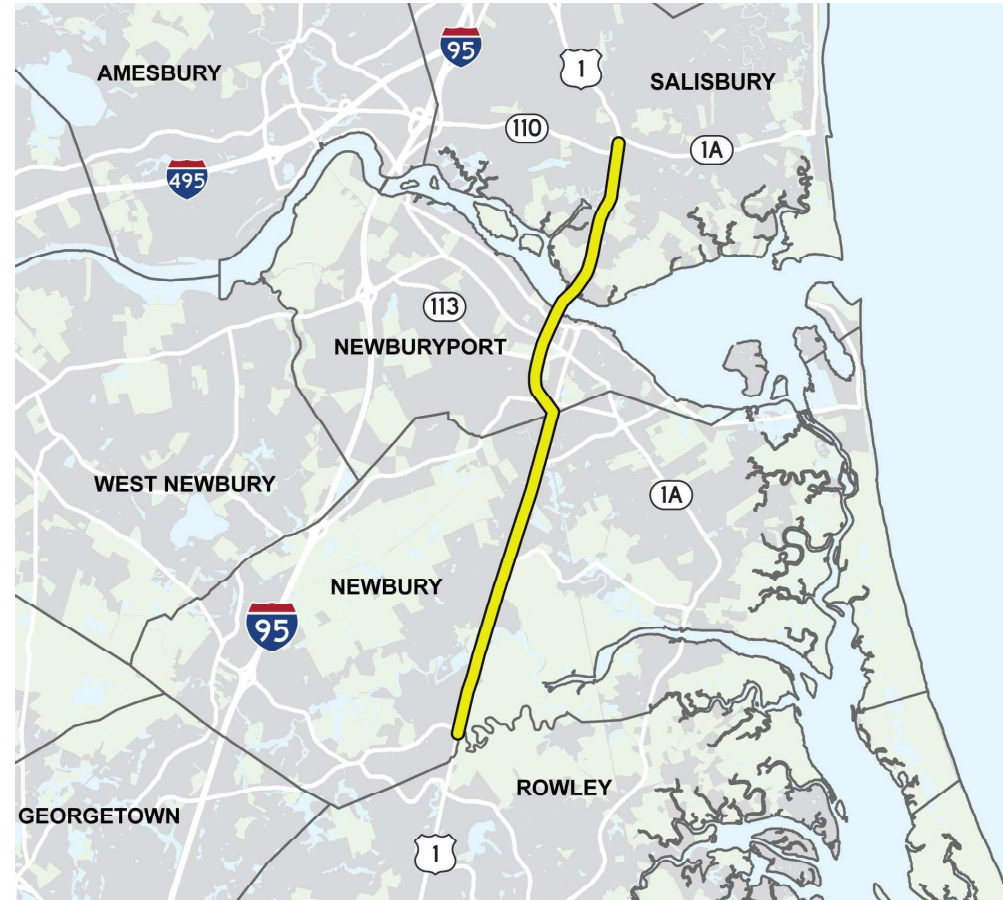




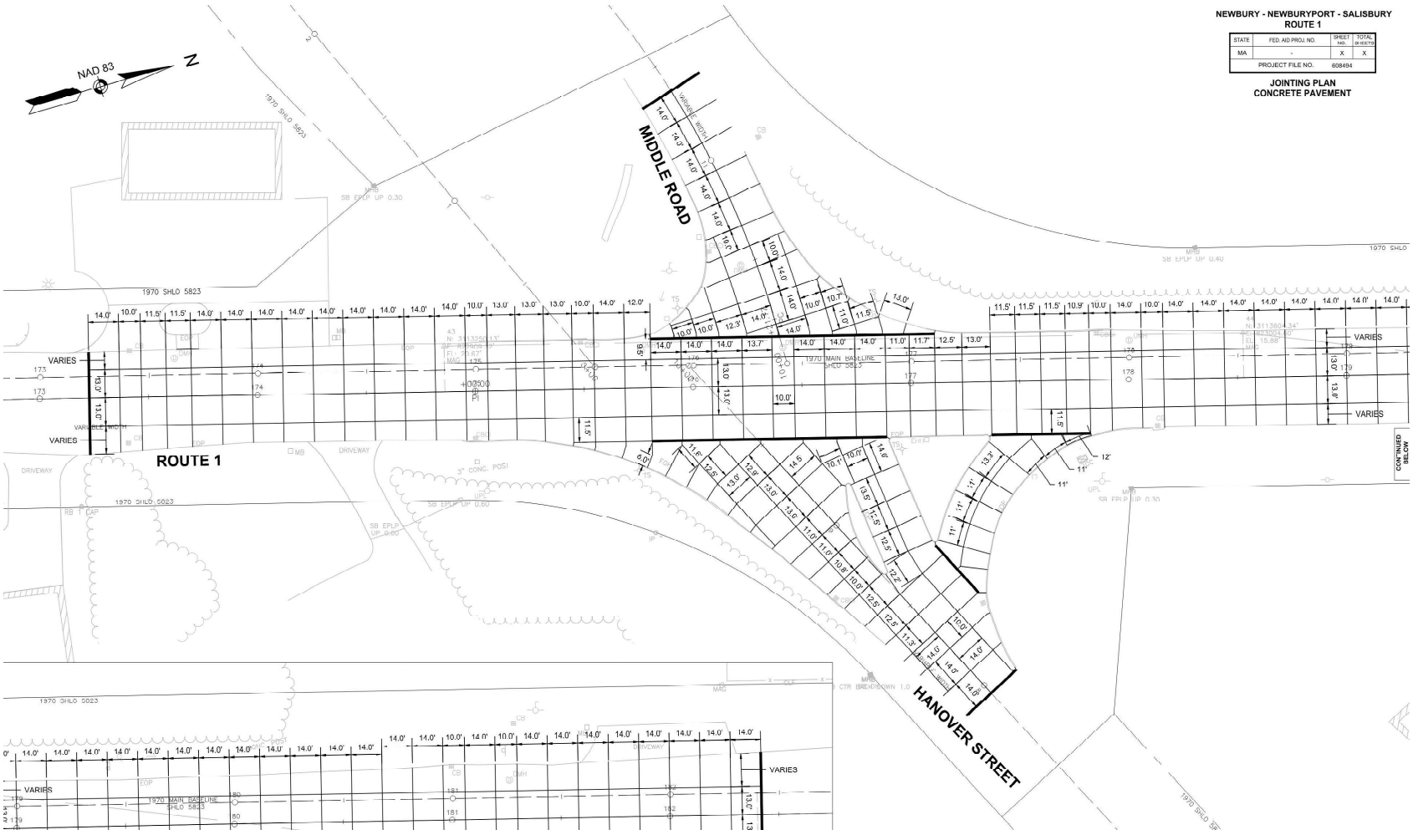
Why was this project initiated?

Route 1 Roadway Resurfacing

- Resurfacing Locations
 - Town of Newbury, City of Newburyport, and Town of Salisbury
- Funding:
 - National Highway Performance Program (NHPP)/National Highway System (NHS)
- Total Construction Cost: \$12,500,000
- Anticipated Resurfacing to Start: Summer 2022



Route 1 at Middle Road and Hanover Street – Concrete Intersection



NEWBURY - NEWBURYPORT - SALISBURY
ROUTE 1

STATE	FED. AID PROJ. NO.	SHEET NO.	TOTAL SHEETS
MA	-	X	X

PROJECT FILE NO. 608494

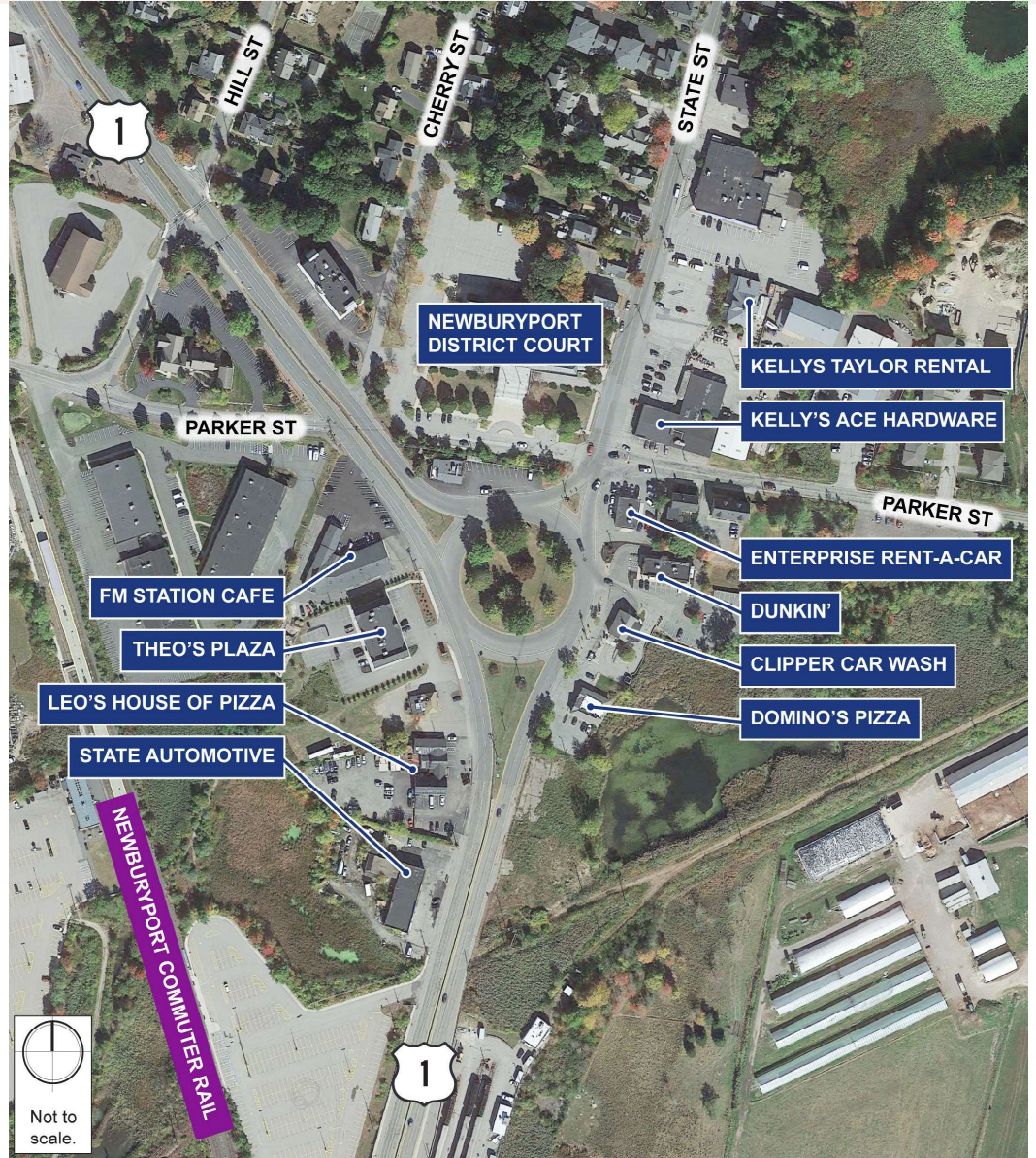
JOINTING PLAN
CONCRETE PAVEMENT





Route 1 Rotary

Route 1 Rotary Project Area



Route 1 Rotary Existing Issues

- Complete Street Accommodations Need Improvements
 - Pedestrian and Bike Desire lines driven from:
 - Clipper City Rail Trail
 - Newburyport MBTA Commuter Rail Station
 - Surrounding businesses
 - Lack of connection to existing and future trails
- Intersection Safety/Existing Geometry
 - Existing rotary geometry encourages vehicle weaving & high speeds
 - Truck traffic
 - Adjacent driveway access

Existing Pedestrian/Bicycle Access

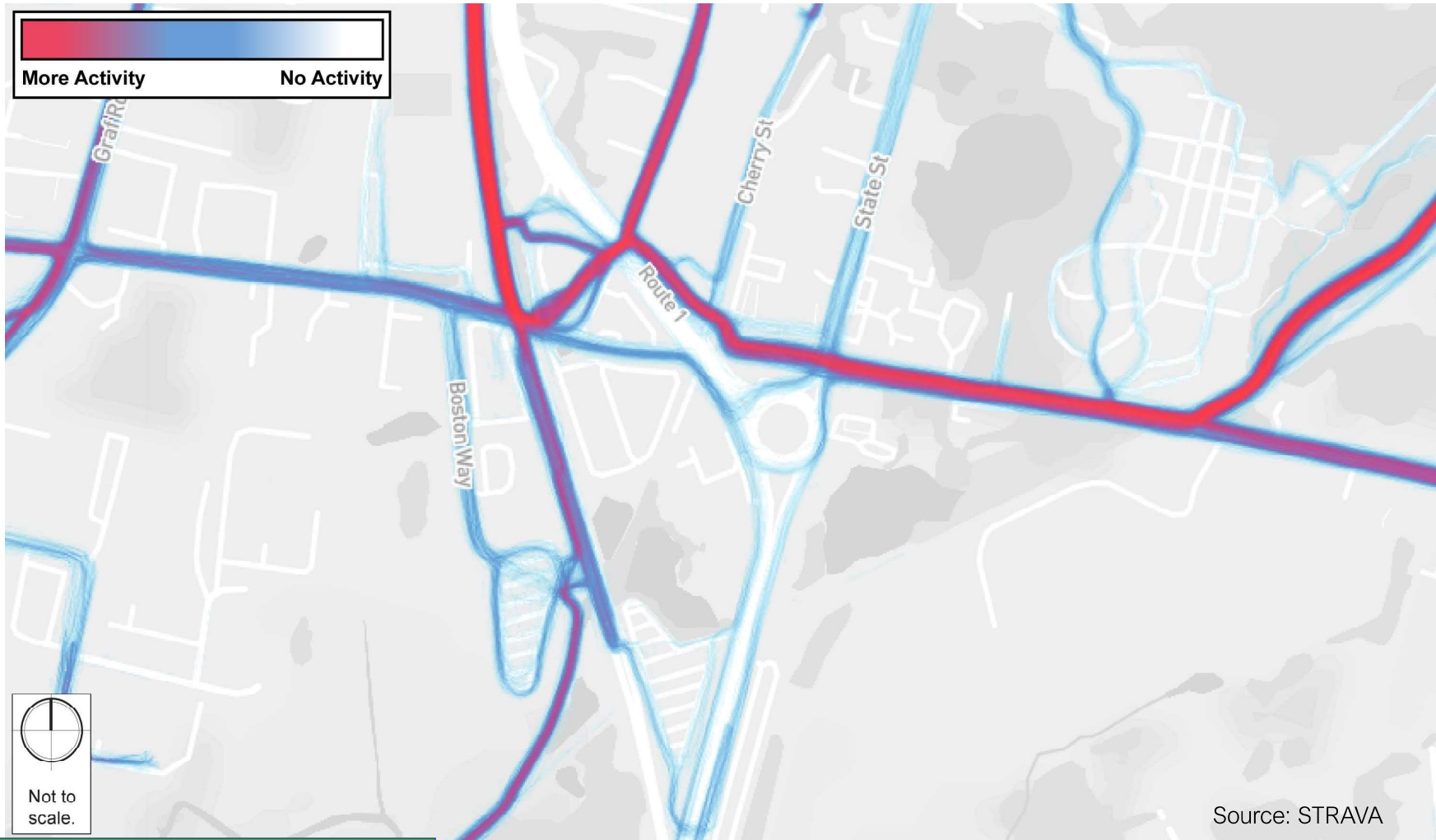
Critical East-West connection between Newburyport Commuter Rail & Clipper City Rail Trail

- Clipper City Rail Trail
- Potential Clipper City Rail Trail Extension
- Newburyport Commuter Rail Line



Existing Pedestrian Utilization

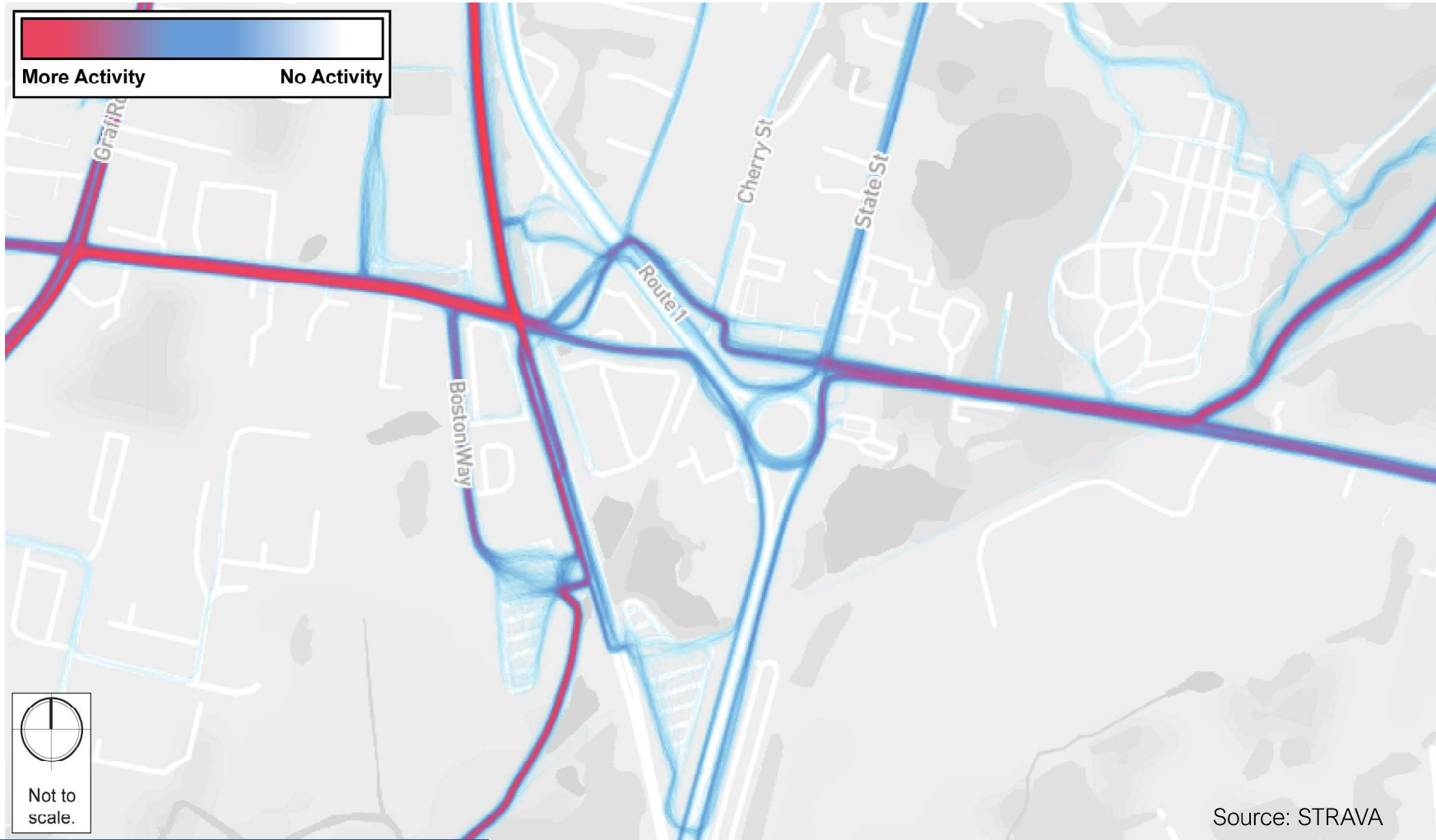
Pedestrian
Heat Map



Source: STRAVA

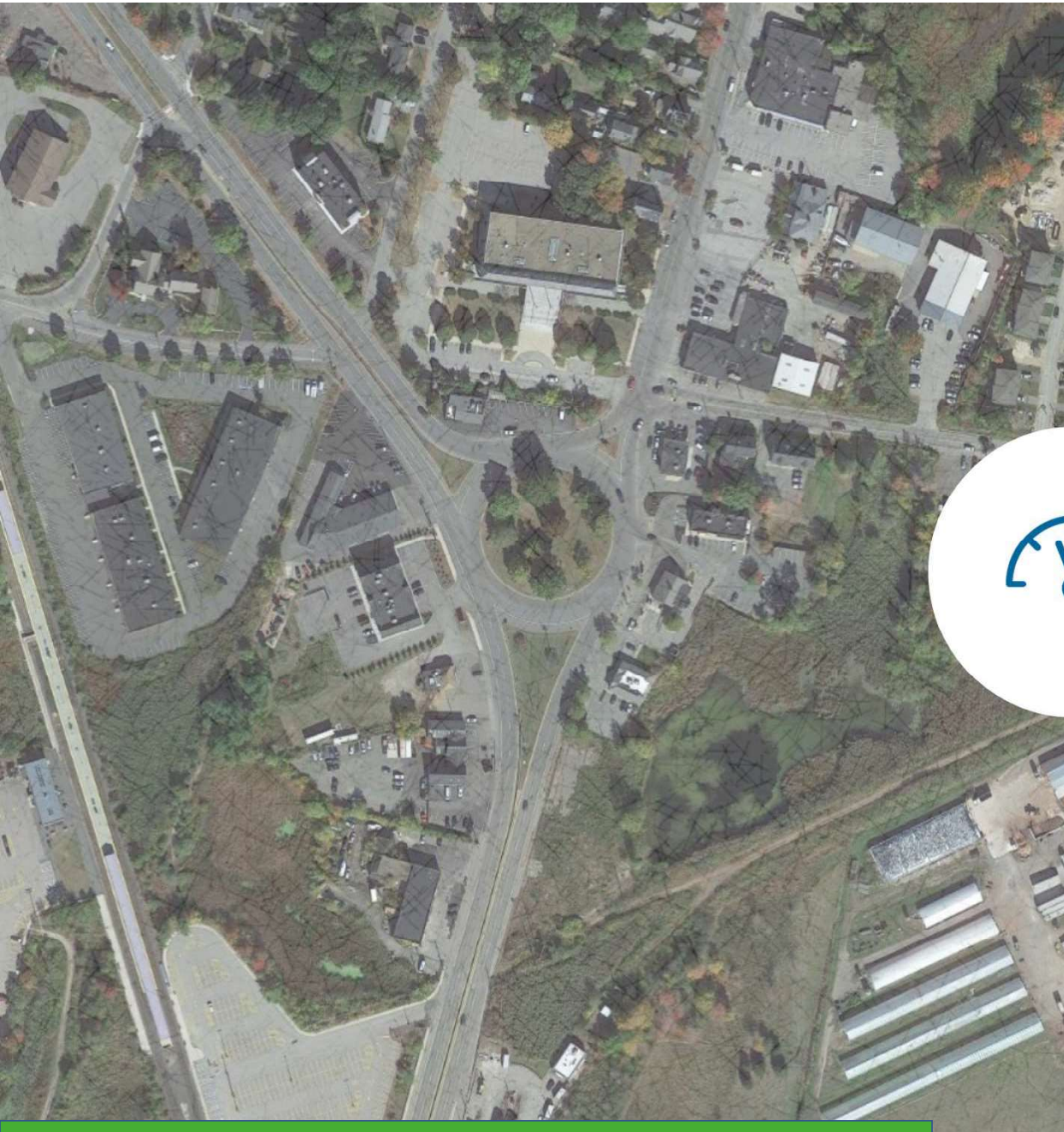
Existing Bicycle Utilization

Bicycle
Heat Map



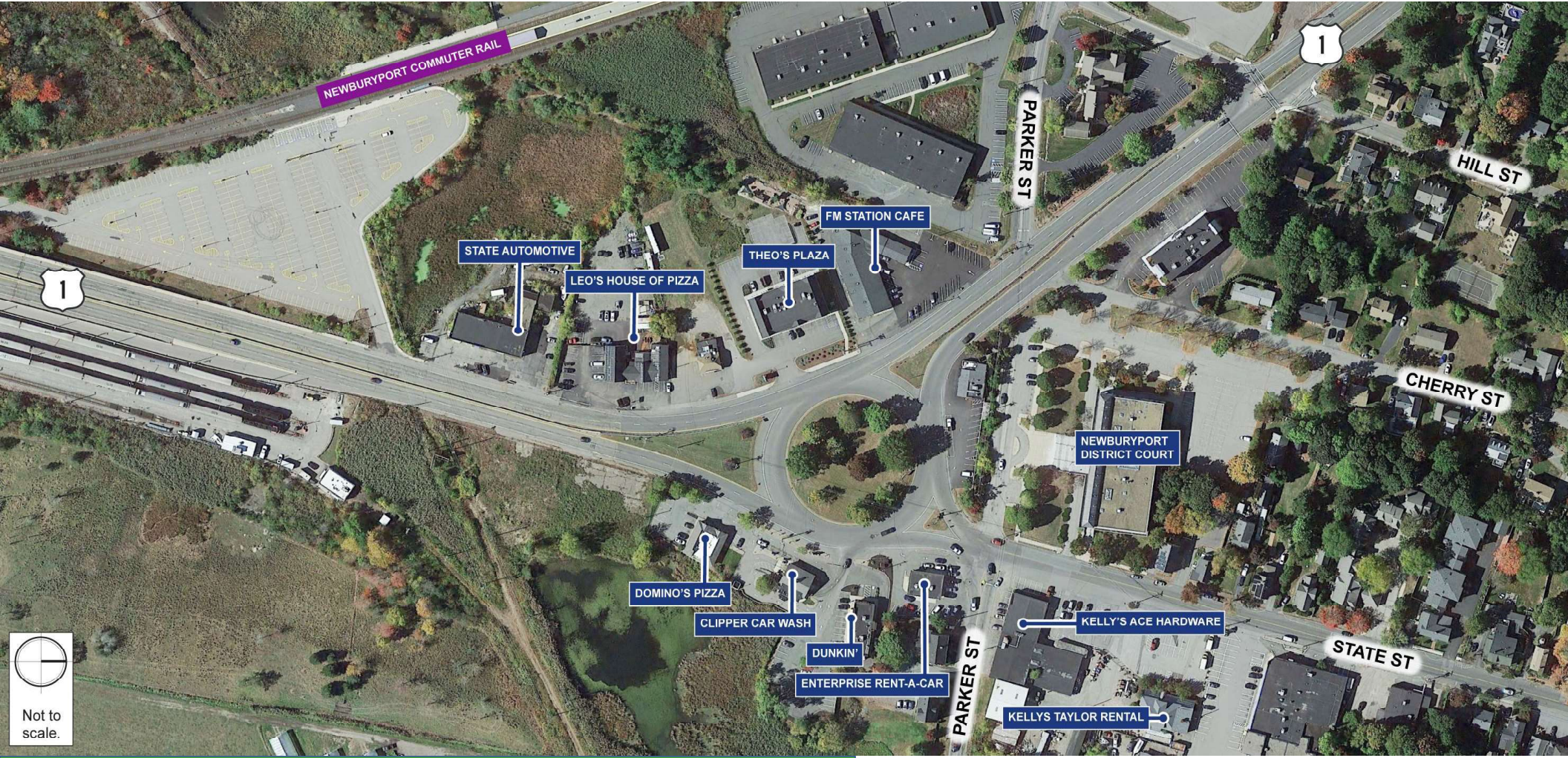
Project Goals

- **Pavement Condition** | Resurface Route 1
- **Pedestrian & Bicycle Accommodations** | Provide new safe crossings & path connections
- **Rotary Safety** | Improve Route 1 rotary safety for all users



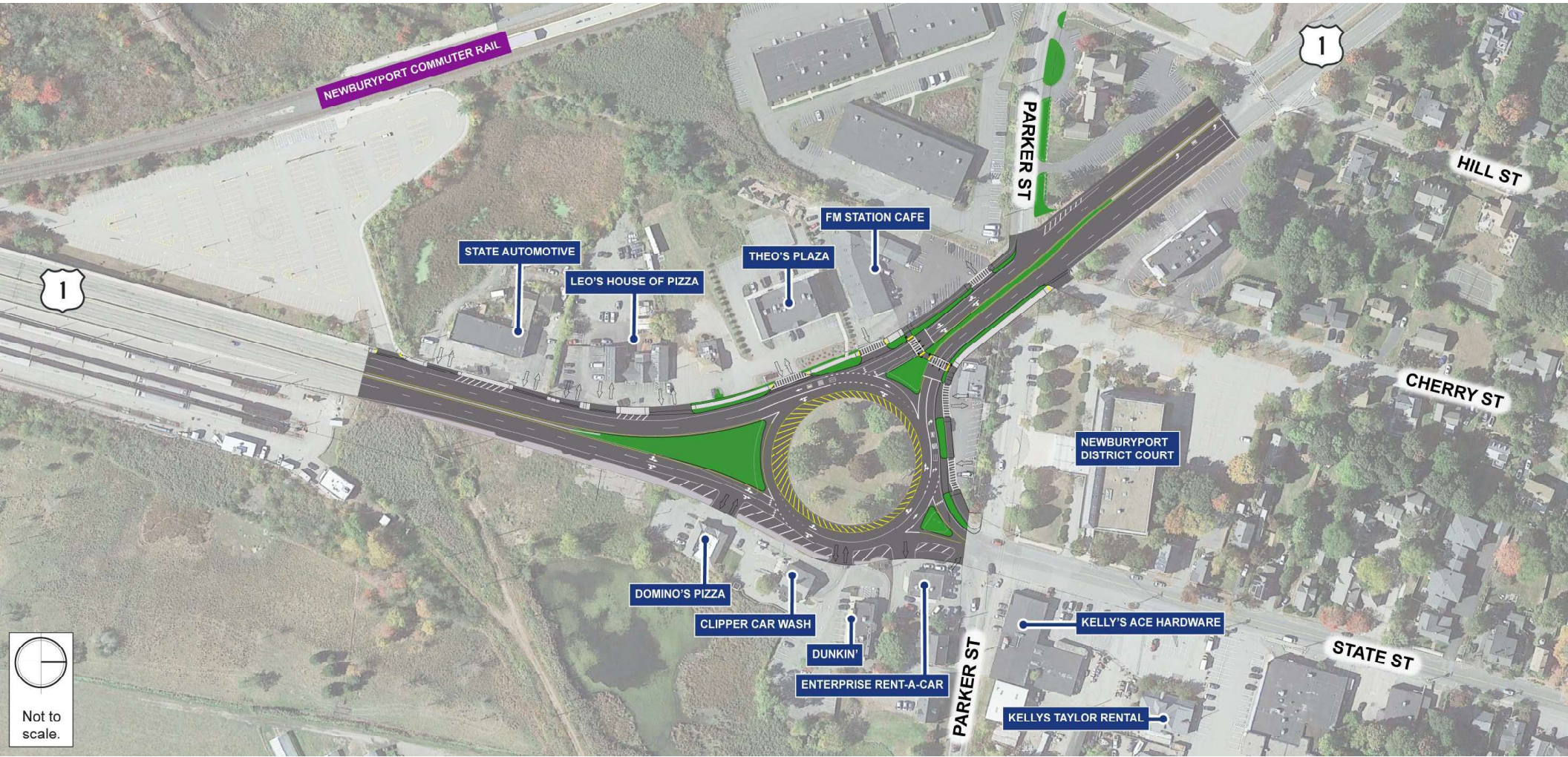
**What
alternatives
were
considered?**

Existing Rotary



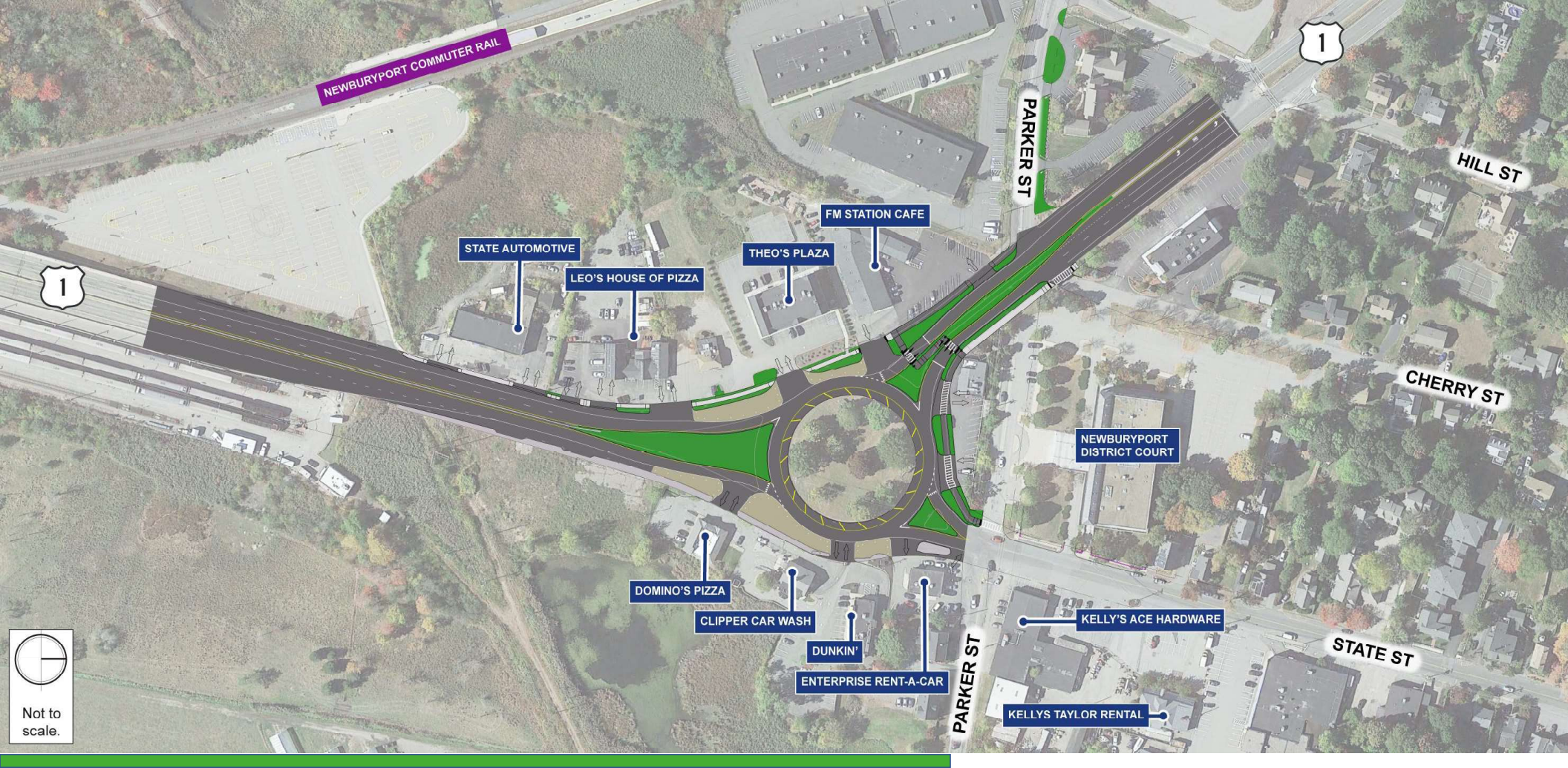
Multi-Lane Roundabout

Two Approach Lanes



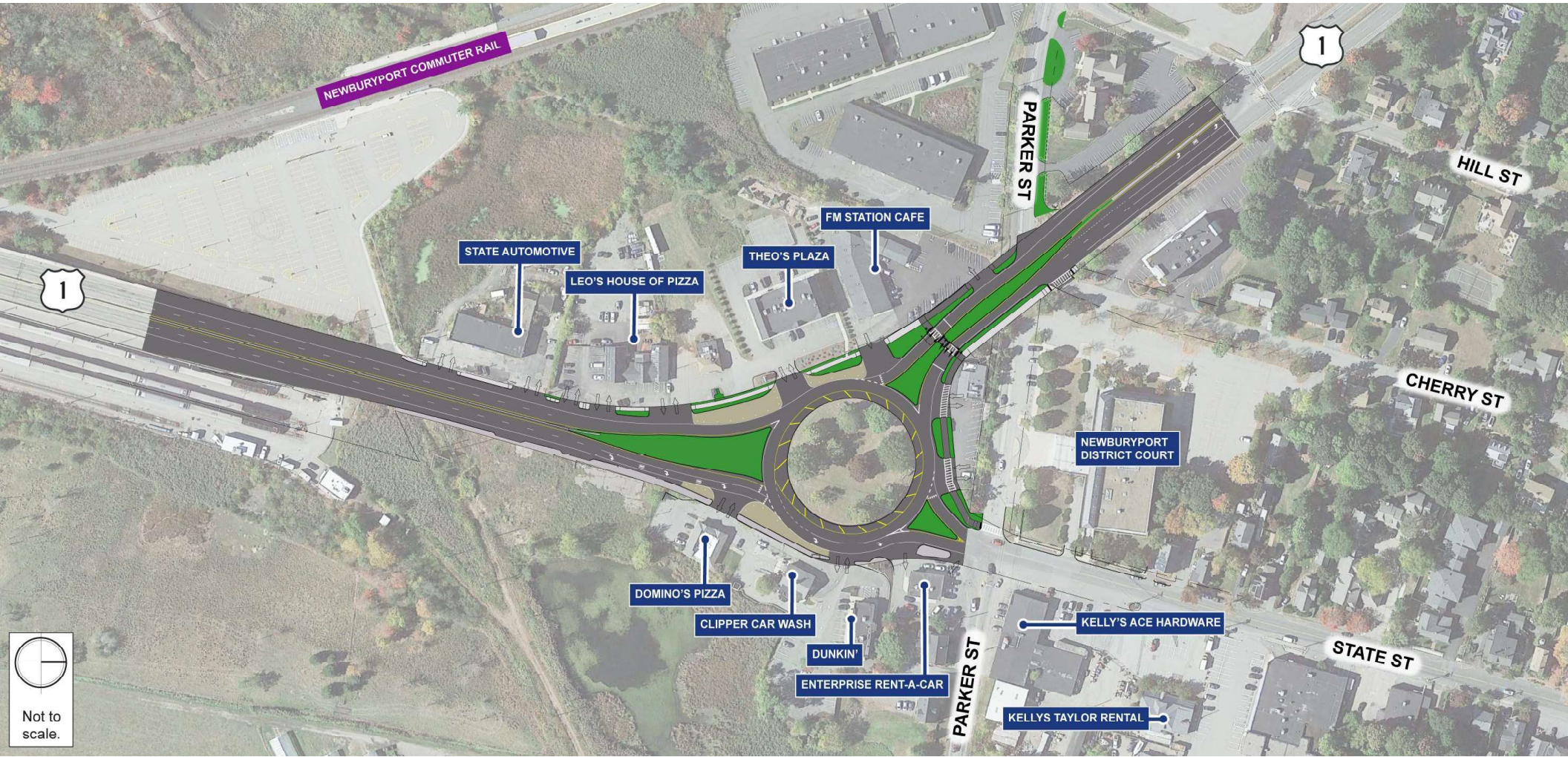
Single-Lane Roundabout

Change to one lane approaches



Mixed-Lane Roundabout

Change to One-Lane Approaches with Two-Lane Northbound Approach



Mixed-Lane Roundabout

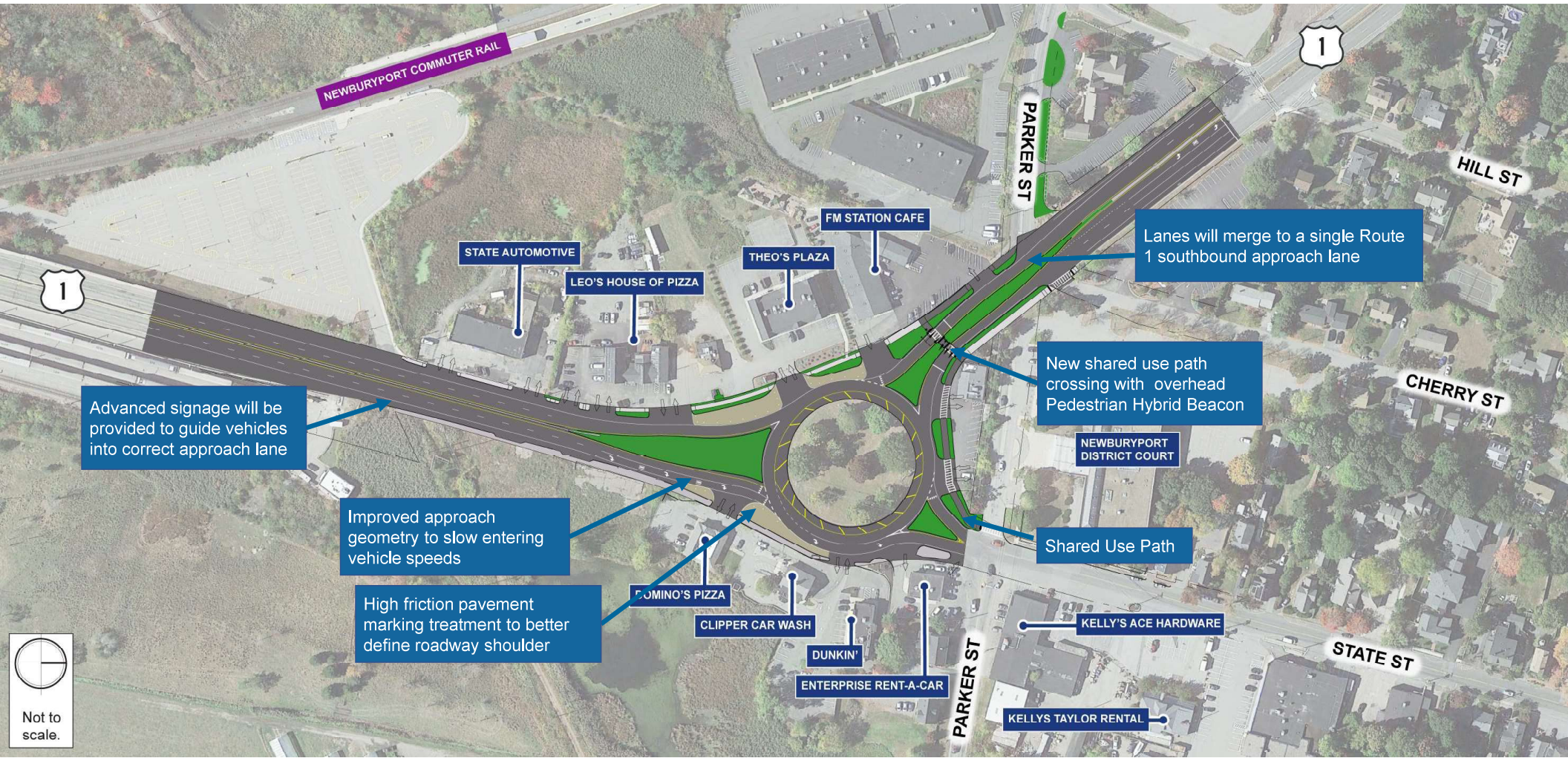
Design includes:

- Completes the east-west path connection across Route 1 for Clipper City Rail Trail to MBTA Commuter Rail Station
- Pedestrian Hybrid Beacon for the Route 1 north leg
- All existing driveway access is maintained and no alterations to ROW required
- Improved entry and exit geometry to slow drivers
- New pavement markings, delineators, and signage

Serving Project Goals

- **Pavement Condition**
Resurface Route 1
- **Pedestrian & Bicycle Accommodations**
Provide new safe crossings and connections
- **Rotary Safety**
Improve rotary safety for all users

Mixed-Lane Roundabout Design

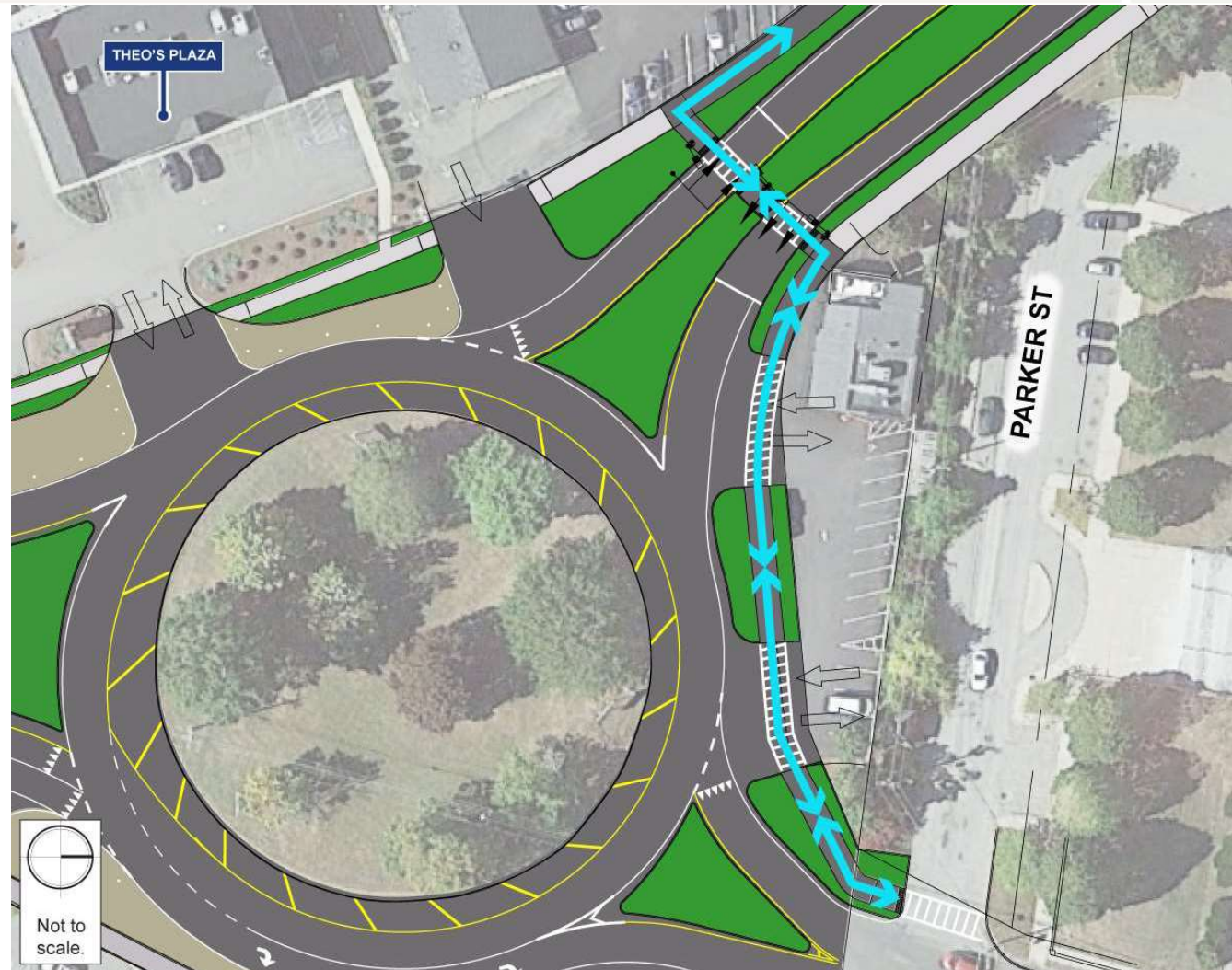
















**How will
bicyclists and
pedestrians
be affected?**

Pedestrian & Bicycle Design Features

- Improvements to existing pedestrian/bike facilities
 - Shared-use pathway along north side connecting Parker Street
 - Sidewalk along the west side of Route 1
 - Pedestrian Hybrid Beacon across Route 1



Pedestrian Hybrid Beacons

Drivers	Pedestrians
 Proceed with Caution	 Push the Button to Cross
 Slow Down (Pedestrian has activated the push button) Flashing	 Wait
 Prepare to Stop	 Continue to Wait
 STOP! (Pedestrian in Crosswalk)	 Start Crossing
 STOP! Proceed with Caution if Clear Flashing	 Continue Crossing (Countdown Signal) Flashing
 Proceed if Clear	 Push the Button to Cross



Location: State Street and Parker Street, Newburyport

Mixed-Lane Roundabout Operations

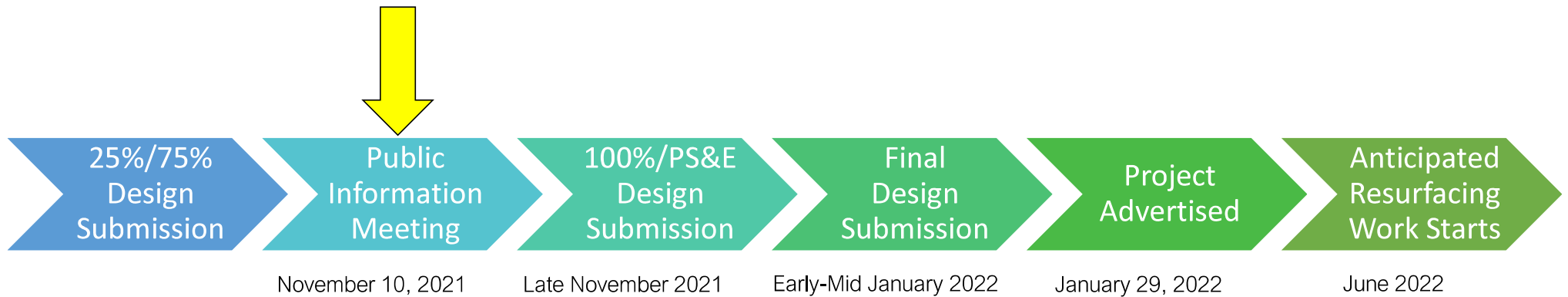
- a.m. Peak Hour

	Level of Service (A-F)		Delay (seconds)		Queue (in vehicles)	
	Existing 2019	Build	Existing 2019	Build	Existing 2019	Build
Route 1 Northbound	A	A	10	7	0-1	0-1
Route 1 Southbound	A	B	9	15	0-1	5-6
State Street Westbound	A	A	5	10	0-1	2-3

- p.m. Peak Hour

	Level of Service (A-F)		Delay (seconds)		Queue (in vehicles)	
	Existing 2019	Build	Existing 2019	Build	Existing 2019	Build
Route 1 Northbound	A	B	8	11	0-1	2-3
Route 1 Southbound	A	C	7	23	0-1	10-11
State Street Westbound	A	B	8	11	0-1	2-3

Our Next Steps





**How will we
keep you
informed?**

Contact Information

Email: DOTHighwayDesign@dot.state.ma.us

Write-in address if preferred:

Carrie E. Lavalley, P.E., Acting Chief Engineer
MassDOT – Highway Division
10 Park Plaza, Boston, MA 02116-3973
Attn: Highway Design Project File No. 608494

Meeting Materials:

<https://www.mass.gov/orgs/massachusetts-department-of-transportation/events/past>

Search for: Newbury, Newburyport, Salisbury - Resurfacing and Related Work on Route 1
- Public Information Meeting



Questions and discussion