



Bartlet Mall Restoration Project

PRESENTATION TO NEWBURYPORT
PLANNING BOARD

AUGUST 2, 2023



Original proposal

Pump house:

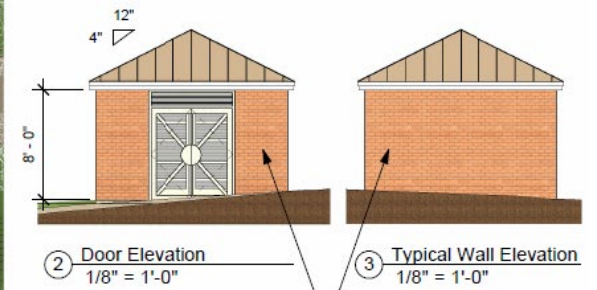
- Elevation at street: +/-62.5
- Elevation at pump house: +/-50.0
- Height of structure: +/-12' at peak
- Materials and design to compliment the Courthouse

Requests from NHC:

- Rotate building
- Shift it further from pathway
- Architectural detailing
- Brick façade requirement



① SITE PLAN
1" = 30'-0"



INTENDED EXTERIOR CLADDING TO BE MASONRY, WITH WOOD SIDING AS COST SAVING ALTERNATE

20" WIDE STONE EDGE

PUMPHOUSE

DOCK



Option A: based on NHC feedback



- 2 Door Elevation
1/8" = 1'-0"
- 3 Typical Wall Elevation
1/8" = 1'-0"

EXTERIOR CLADDING
TO BE MASONRY

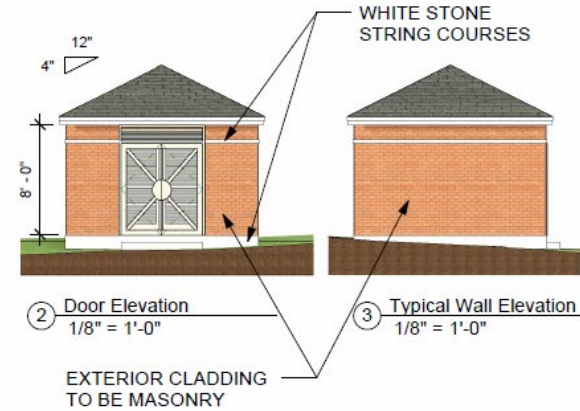
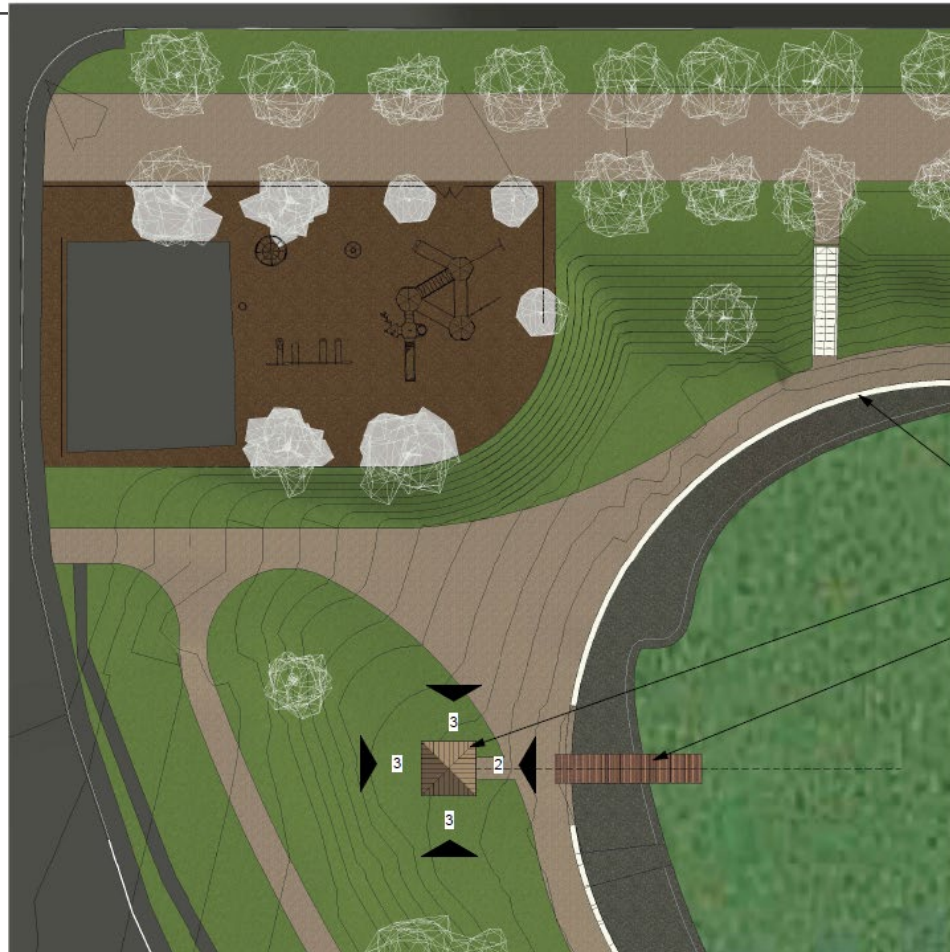
20" WIDE STONE EDGE

PUMPHOUSE

DOCK



Option C: based on NHC feedback



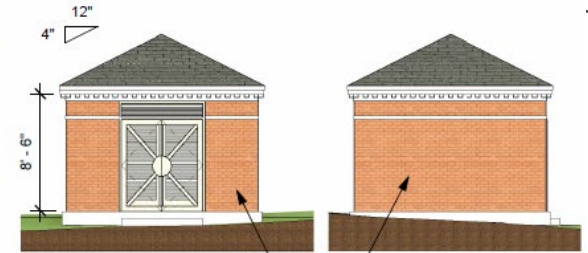
20" WIDE STONE EDGE

PUMPHOUSE

DOCK



Option D: based on PB feedback



② Door Elevation
1/8" = 1'-0"

③ Typical Wall Elevation
1/8" = 1'-0"

EXTERIOR CLADDING
TO BE MASONRY

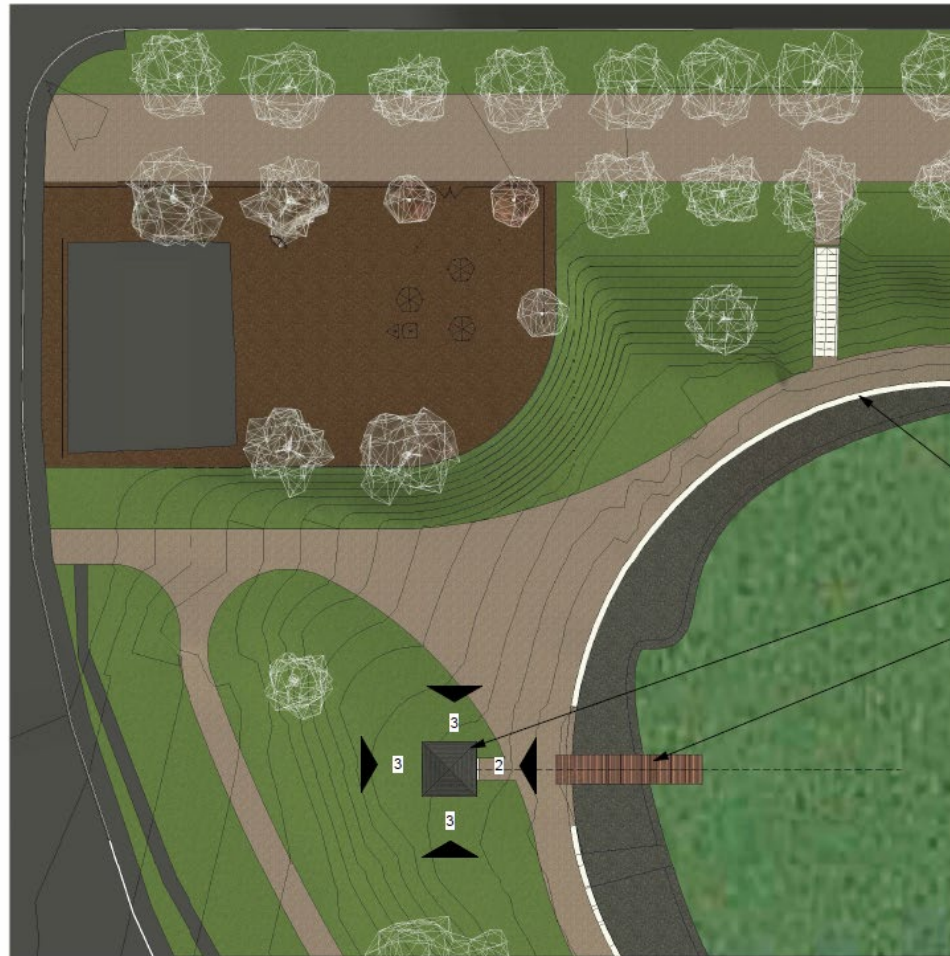
20" WIDE STONE EDGE

PUMPHOUSE

DOCK



Option E: based on PB feedback



② Door Elevation
1/8" = 1'-0"

③ Typical Wall Elevation
1/8" = 1'-0"

EXTERIOR CLADDING
TO BE MASONRY

20" WIDE STONE EDGE

PUMPHOUSE

DOCK



