



Did you know that the Senior Community Center uses a database to track participation? It does!! It is super important that everyone scans into our system when in the facility. This helps us know who is attending programs and what programs folks like the most. It also helps us with funding when we apply for grants.

If you need a scan card, stop by the front desk.

There is an ONLINE version of this which allows participants to sign-up or remove themselves from programs. Each month the center offers trainings on how to use this site. Check with the monthly newsletter for dates and times of training.

Seasonal Programs:

Painting Group-Band of Brushes:
Summer program Tuesdays 9:00-12:00
 Free

BINGO: *Summer program* Thursdays
 12:30-2:00 \$1 per card

Important program notes:

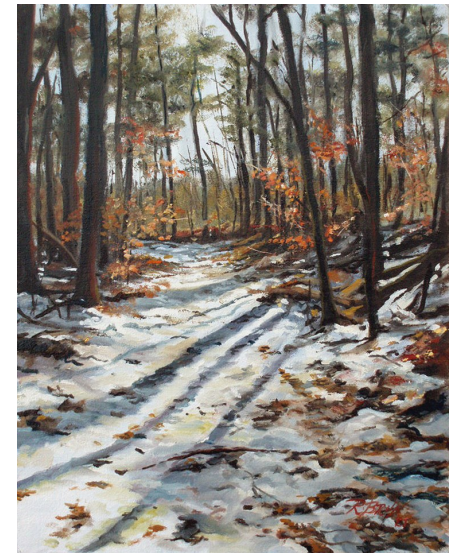
- Cash payment is due at the start of each class, if payment is required.
- A waiver must be signed before you start any class, see main office for updated form.
- Pre-registration for each class is highly recommended (on the **myactivesenior** site).
- Scan in before the start of class.



Executive Director:
Sara Landry
978-462-0430-office
978-992-1346-cell

**Newburyport Senior/
 Community Center**

**Arts, Crafts, Music and Hobbies
 Winter
 2024**



Painting by Rob Brun

**331 High Street
 Newburyport, Ma 01950**

**For more information contact:
 Mary Kelly, Activities Director
 978-462-0430**

The Newburyport Senior / Community Center strives to provide many different learning and fun opportunities for our community.

Class Descriptions:

Bridge: Drop-in social Bridge games.

Chess Club: Drop-in social Chess games

Cribbage: Drop-in social Cribbage games

Pastel Painting: Each week the group works on a different printed picture provided by the instructor.

Drawing: Subject matter will be from photographs or drawing from life using objects and still life that are set up in class.

Ukulele Beginner: is an educational class for anyone that is new to the instrument.

Ukulele Advanced: is an educational class for anyone that has experience with the instrument and would like to become part of the Port City Ukulele Group.

Open Art Studio: Bring your project and work with us.

Mahjongg: A game played with tiles. They play the American version and new players are welcome to come learn.

Oil Painting: Technique is taught and creativity is encouraged.

Zen Doodle: is a form of Art Therapy that reduces stress, increases well-being and enhances relaxation. In this class, you will be guided to find your own ways of expressing your emotions so as to improve your overall health. No artistic ability is required.



Painting by Rob Brun

Monday

Bridge: 1:00-3:00. Free.

Chess Club:10:00-12:00. Free.

Monthly Programs:

Historic Crafts *Custom House Maritime Museum* 1st Monday of the Month 11:00-12:00. Free

Adult Pottery: 2nd Monday of the Month. 1:00– 3:00. \$20 per class

Watercolor Open Studio: 2nd Monday of the Month 9:00-12:00. *Program at full capacity.* Free

Watercolor Painting with Bill Duke: 4th Monday of the Month. 9:00-12:00. Registration Required. \$20 per class.

Tuesday

Pastel Painting:

2:00-3:00 - \$5.00

Drawing: 3:00-4:00. \$5.00

Monthly Programs:

Writing Group: 3rd Tuesday of the month 10:45-12:00. Free

Wednesday

Chess

Club:10:00-12:00. Free

Monthly Programs:

Book Club: 1st Wednesday of the month. 2:00-3:00. Free

Stamp Club: 2nd and 4th

Wednesday of every month 1:30-3:00. Free

Model Ship Club: 3rd

Wednesday of the month. 11:00-1:00. Free

Thursday

Ukulele Beginner level:

8:00-9:00. \$5.00

Ukulele Advanced Level:

9:00 -10:00. \$5.00

Open Art Studio: 12:00 -2:00. Free

Mahjongg: 1:00-3:30. Free

Friday

Cribbage: 1:00-3:30. Free

Oil Painting 10:00-12:00. \$10.00 class registration required.

Zen Doodle: 1:00-2:00. Free