

City of Newburyport Philips Drive Neighborhood Improvements

Neighborhood Meeting

April 14, 2021





Project Goals

- Repair Deteriorated Roadway Pavement and add asphalt curbing.
- Replace Stormwater Drainage Infrastructure
- Reduce Groundwater Infiltration Issues
- Provide Homeowner Connection Points for Private French Drainage Systems.
- Replace existing public waterlines within the roadway.
- Repair Existing Sidewalks





Preliminary Project Timeline

- 2020/08/20 - First Neighborhood Meeting
 - Fall 2020 – Schematic Design
 - Winter/Spring 2021 – 75% Construction Documents
-
- Summer 2021 - Bid Documents/Project out for Bidding
 - Fall 2021 – Construction Start
 - Late 2022/2023 – Final Paving

75% Design - Overall



ROADWAY & DRAINAGE IMPROVEMENTS - APRIL 13, 2021

ROADWAY & DRAINAGE IMPROVEMENTS

PHILIPS DRIVE NEIGHBORHOOD
IN
NEWBURYPORT MASSACHUSETTS

PROJECT OVERVIEW MAP

APRIL 14, 2021

Revisions:

NO.	DATE	DESCRIPTION

PREPARED FOR:
CITY OF NEWBURYPORT
65 PLACANT STREET
NEWBURYPORT, MA 01950



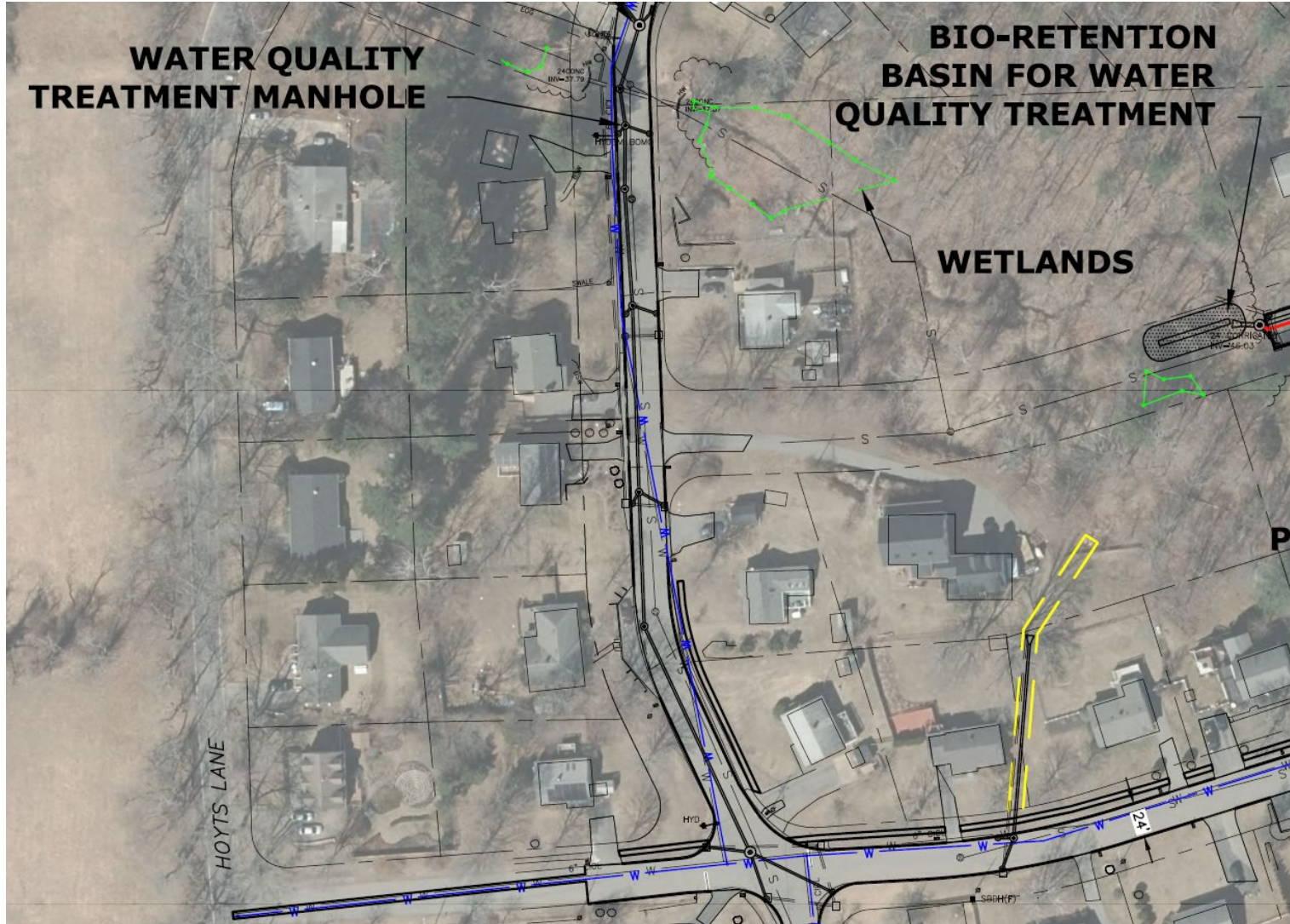
© 2021 BSC GROUP, INC.
SCALE: 1" = 80'
FILE: BR12-000-APR14.DWG
DWG. NO.
DSC: 100 - BR12.00

FIGURE 1

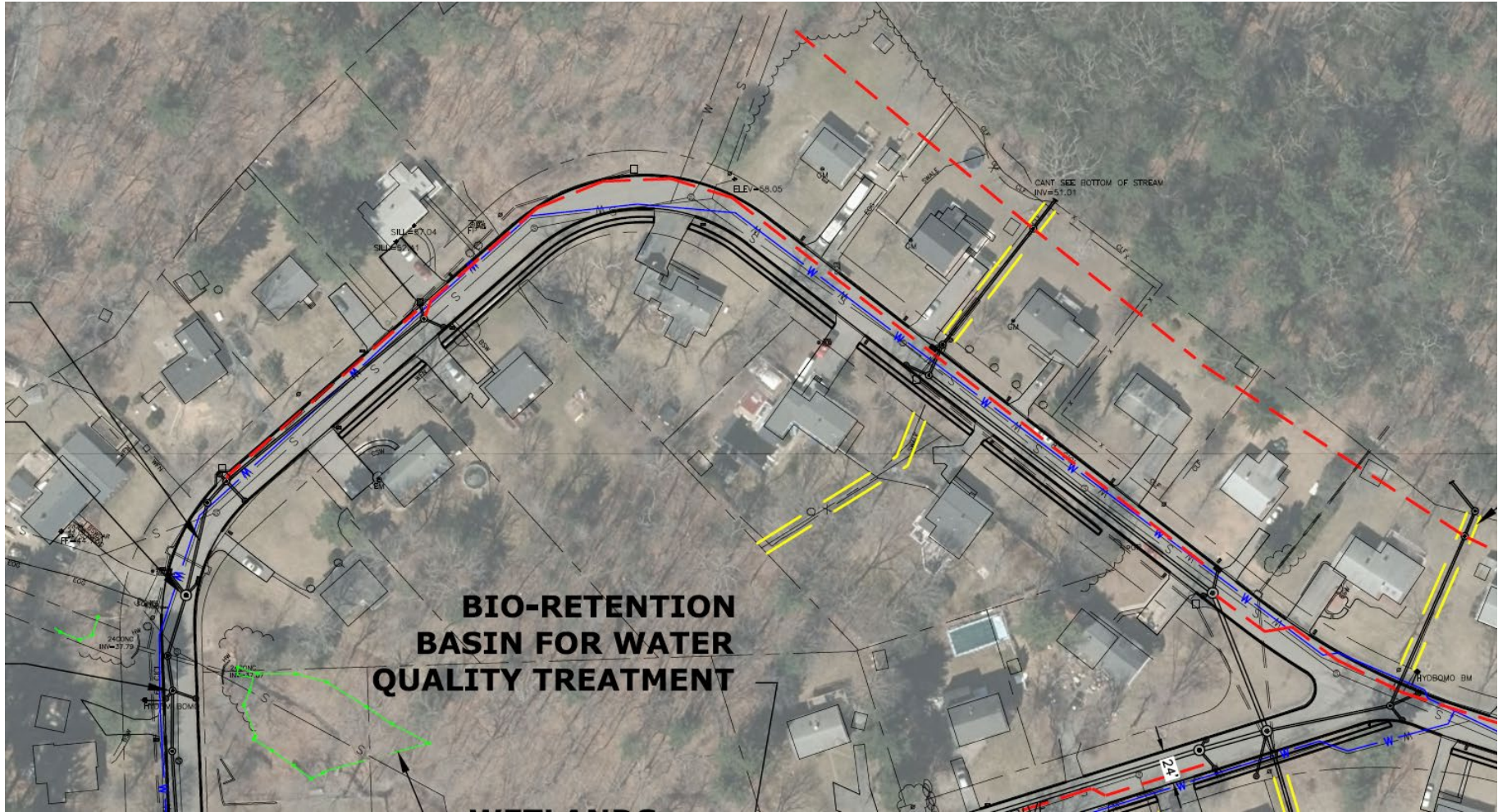
75% Design - Philips Drive



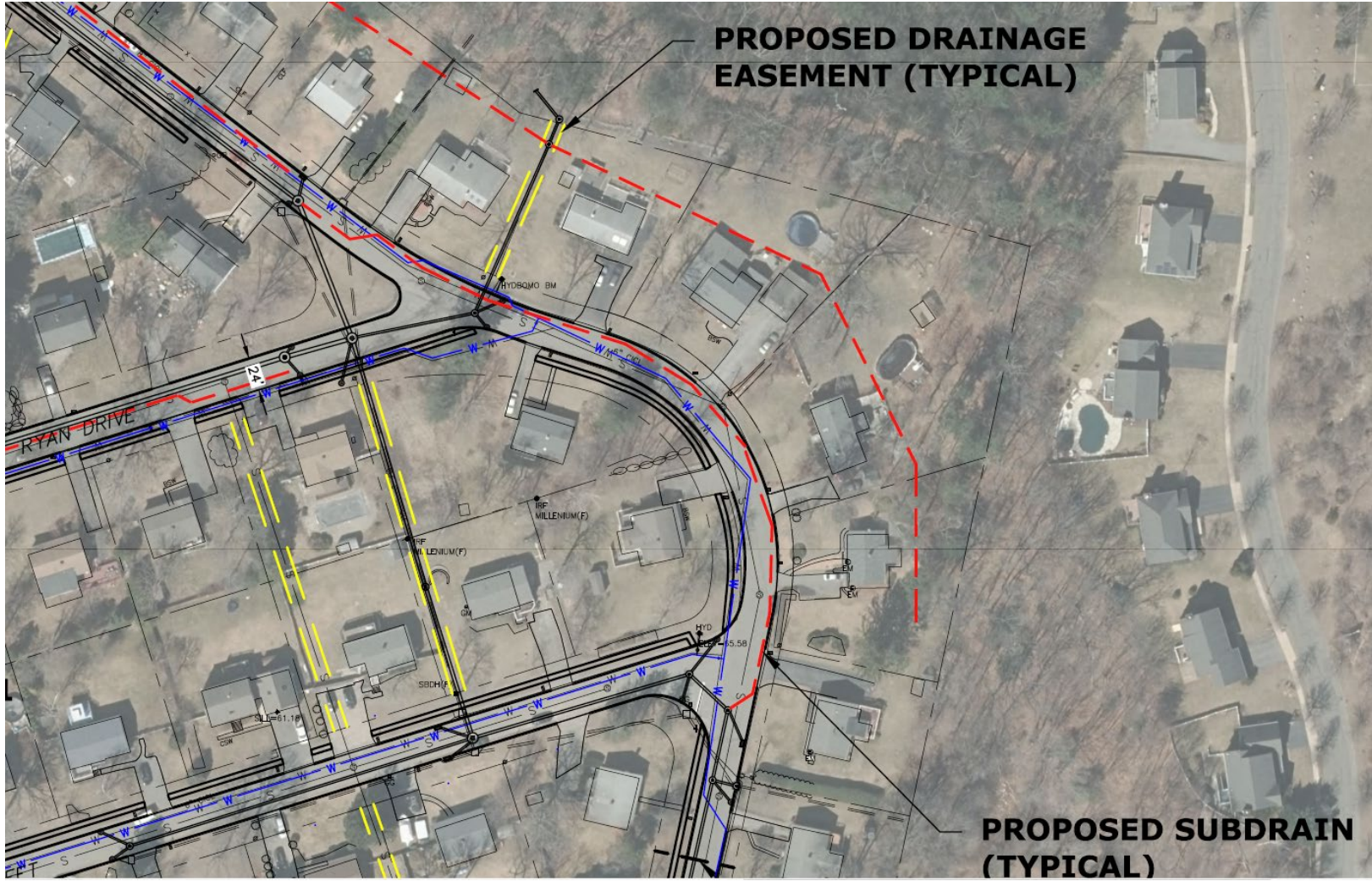
75% Design - Philips Drive



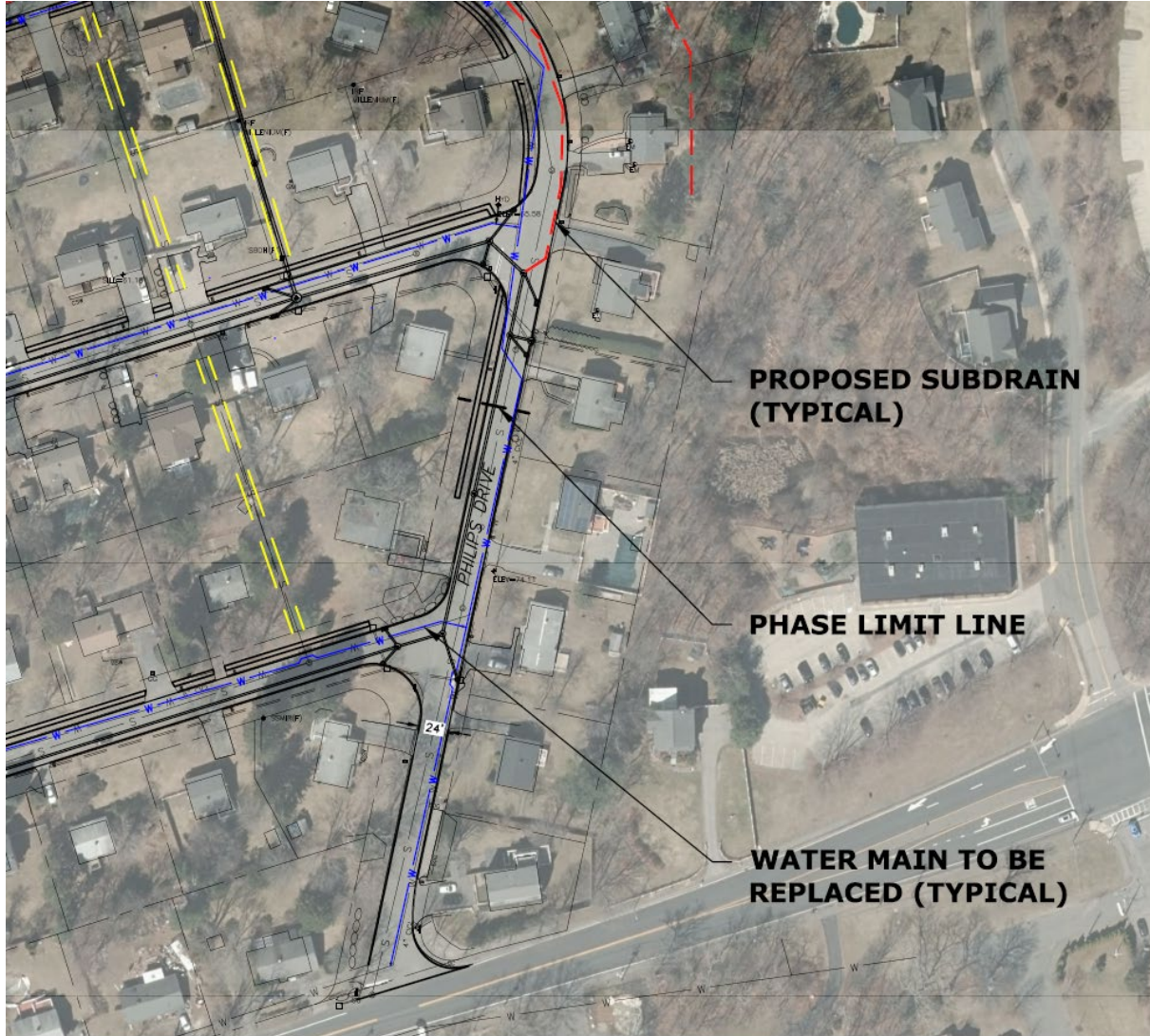
75% Design - Philips Drive



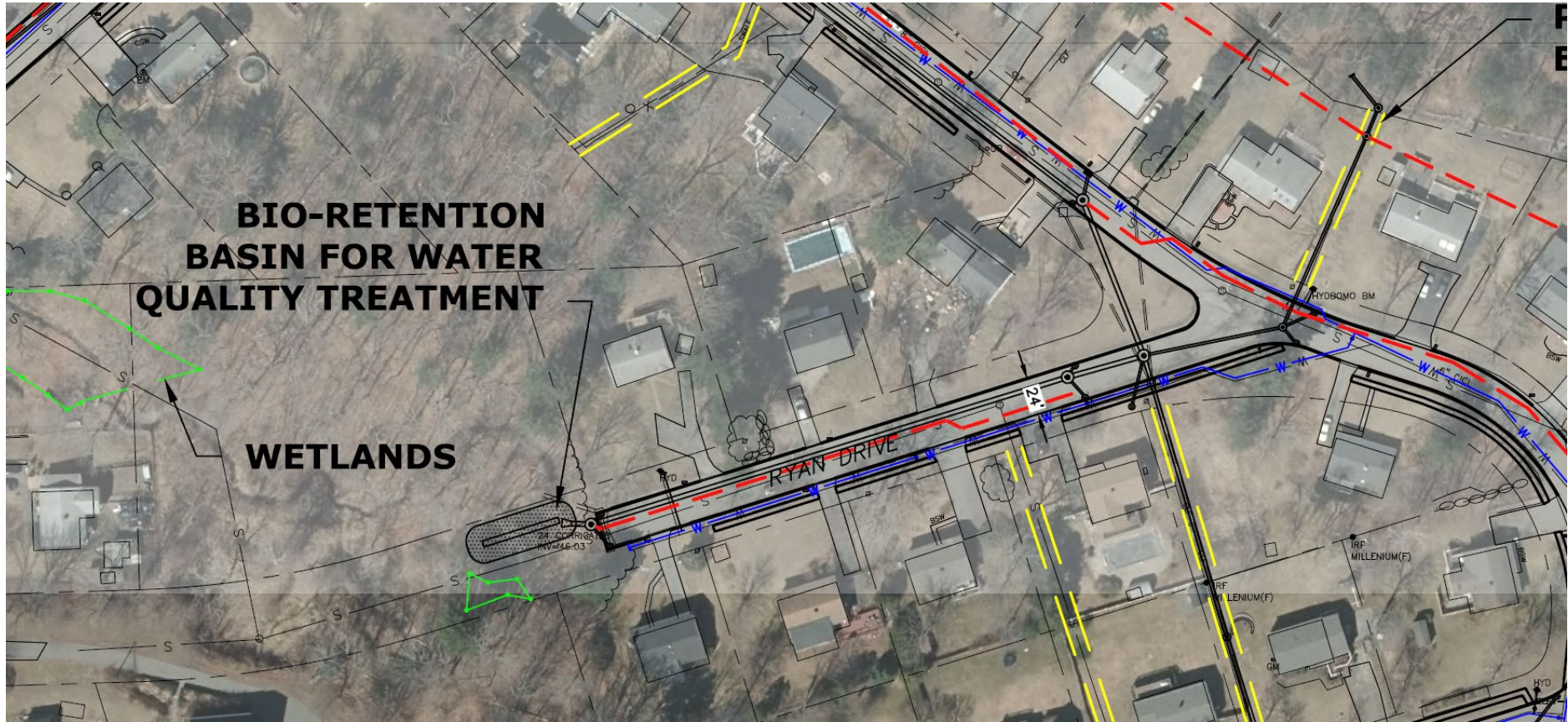
75% Design - Philips Drive



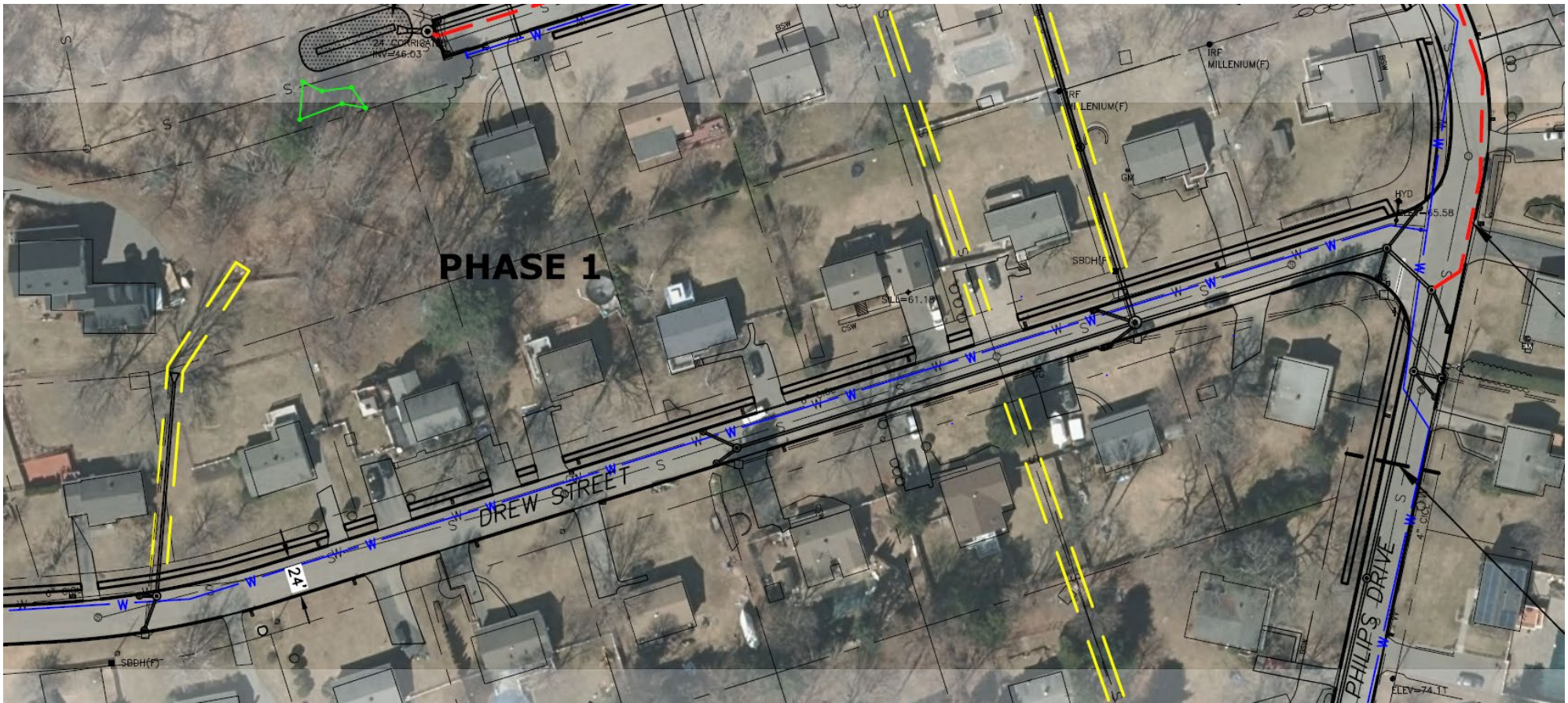
75% Design - Philips Drive



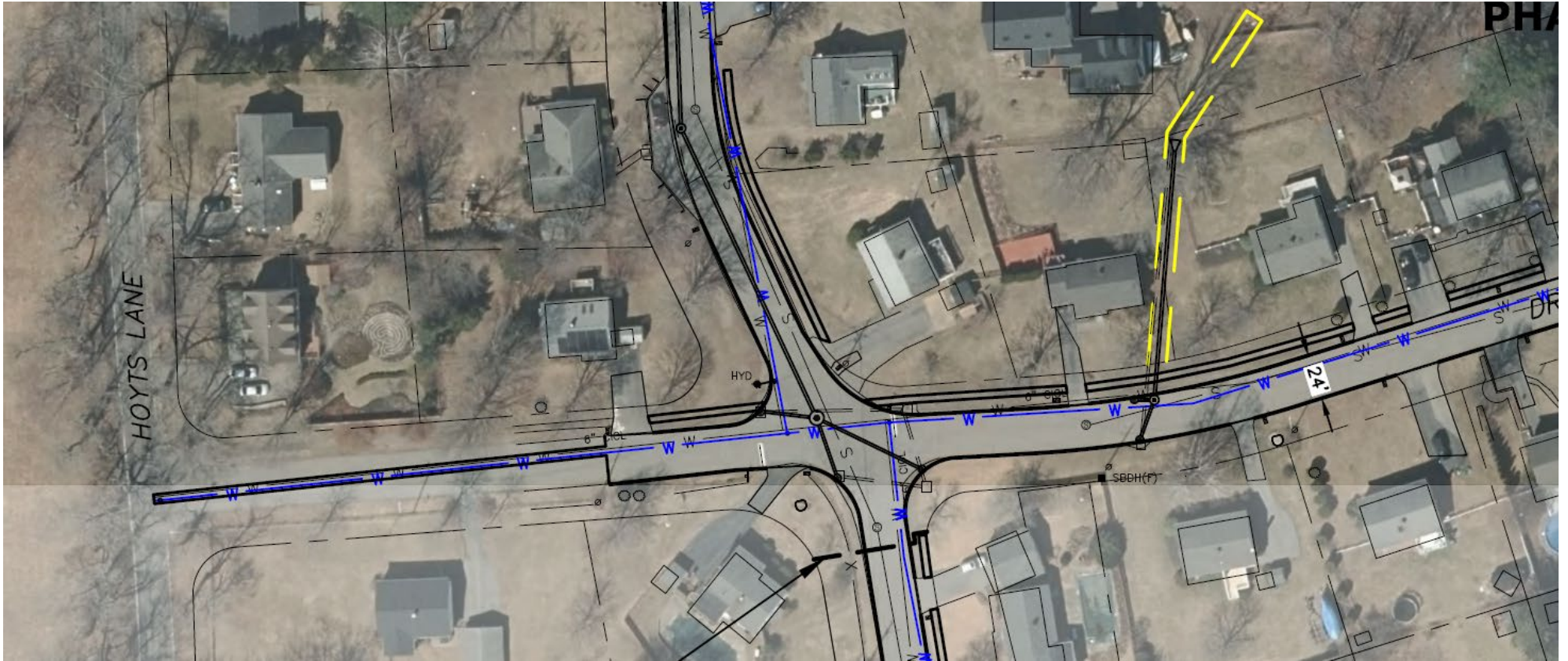
75% Design – Ryan Drive



75% Design – Drew Street



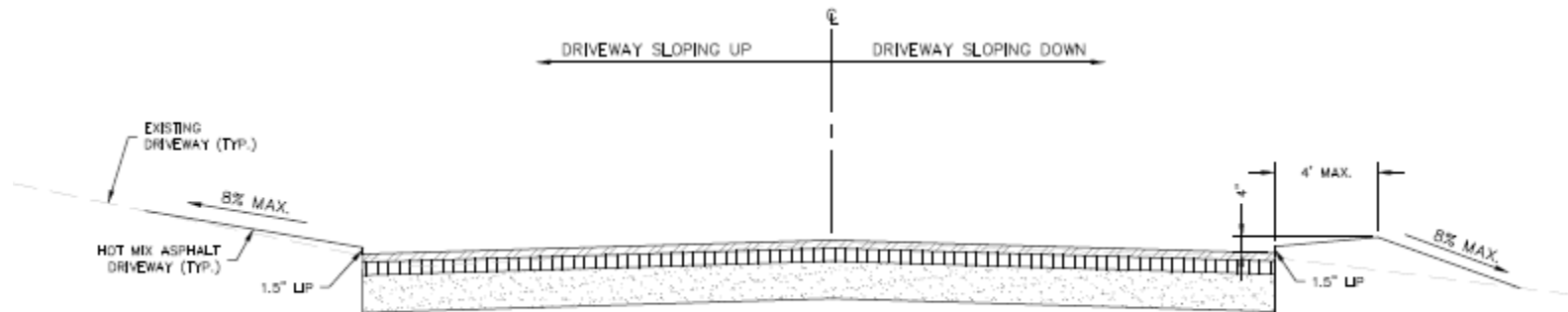
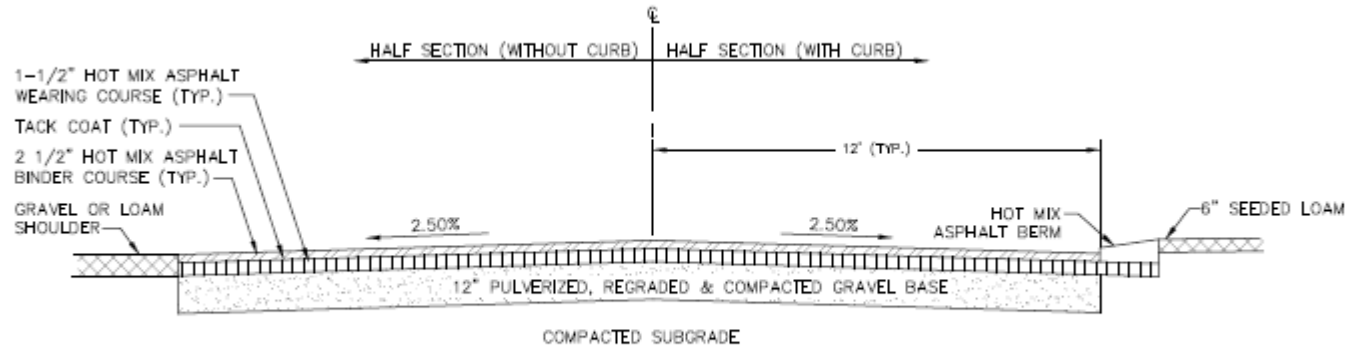
75% Design – Drew Street



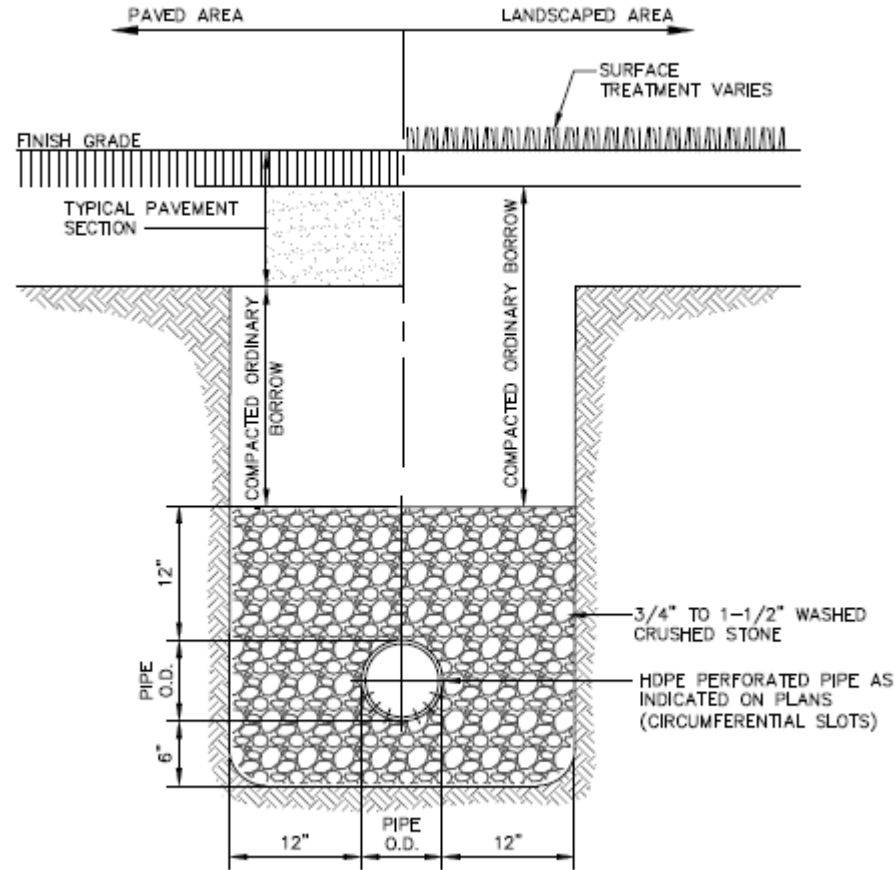
75% Design – Sullivan Drive



75% Design – Roadway Cross Section



75% Design – Groundwater Intercept Drain





Questions and Comments