

## What is Resilient Newburyport?

Our changing climate is presenting new challenges for Newburyport, and we want to ensure that our city remains resilient and strong for generations to come.

Resilient Newburyport is about more than just the environment and climate; it's about every one of us who calls Newburyport and our neighboring towns home. Through our **Community Action Project (CAP)**, we are setting out on a mission to speak to as many of you as possible. We want to hear your stories, concerns, and ideas about our shared future. We believe in the power of a community that's informed, engaged, and connected.

[Newburyport's Resiliency Committee](#) is leading this project, but at its heart is each and every one of you.



January floods cover Cashman Park playground, while local students get smart about managing waste. Read more below.

## This Issue

Schools Taking Care of the Planet **P.1**

Newburyport Climate Survey & Forums **P.2**

Upcoming Projects & Events **P.2**

Adapting Historic Homes **P.3**

January Flooding **P.3**

Other Tidbits **P.3**

## Schools Taking Care of the Planet... One Lunchtime at a Time

**T**hree Newburyport schools - Bresnahan, Molin and Nock - are on an exciting green mission! In April they will be introducing new waste sorting stations to make their schools more eco-friendly. Students will learn how to sort their waste into different bins, instead of tossing everything into one big trash can.

This initiative will transform the cafeterias into learning hubs, where students make smart decisions about recycling and composting.

In the past, most school trash would end up in one big bin, mixing recyclables and compostables with regular waste. But not anymore! Bresnahan Elementary started by composting with a large tote bin from Black Earth Composting.

*Students and staff will soon become waste-sorting whizzes.*

Now they are teaching everyone how to recycle effectively in the cafeterias.

This green initiative is set to significantly cut down waste removal costs and foster a cultural shift towards eco-friendly practices across the schools and the wider community.

The goal is to eventually expand this program to all schools in the district.

*About 40% of all food in the US gets wasted, amounting to about 37 million passenger vehicles worth of greenhouse gases. By trying to buy only what we'll actually eat, and composting our food waste, we can significantly reduce our personal contributions to climate change.<sup>1</sup>*

<sup>1</sup>NRDC, [Wasted-How America Is Losing 40% of Its Food From Farm to Fork to Landfill](#) (2017)



### The Latest From the Resilient Newburyport Team

This month, we hope that you will spend a few minutes completing our short online [Newburyport Climate Survey](#). The goal of the survey is to help us better understand your thoughts, concerns, and priorities on climate change issues in Newburyport. Responses will also help us prepare for upcoming forums and other climate-related projects that are important for all Newburyport stakeholders.

Make sure to check out the list of upcoming events on page 2! More information on these and all of our Community Partner events and projects can be found on our [Community Action Project](#) website.

And as always, please continue to [reach out](#), we want to know what is on your mind when it comes to climate change and Newburyport.

~ Jane Healey, Newburyport Resiliency Committee

# Newburyport Climate Survey & Forums

Embark on a journey with us to address climate challenges and strengthen our city's resilience. This spring's Community Forums for Climate Action will present a unique opportunity to engage in vital conversations about the climate-related risks facing Newburyport.

By participating, you'll gain knowledge about local climate challenges and Newburyport's specific vulnerabilities, empowering you to contribute meaningfully to our collective efforts.

We are planning four Community Forums for Climate Action between now and the end of June. The first forum is scheduled for April 2nd and dates for subsequent forums will be announced soon.

Experts from Urban Harbors Institute at UMass Boston and the Creative Action Institute in Ipswich will lead these sessions, ensuring a rich, informed, and fun experience.

## Interested? Let us know!

Express your interest by completing our [Newburyport Climate Survey](#). Your participation in this survey will help shape the content of the forums and future climate resilience work in the city.

Together, let's create a more resilient future for our city.

## Upcoming Events & Projects

### March

#### Tinkerhaus - Bikes and Blooms - Saturday, March 23

Tinkerhaus is offering a program to engage local teens in constructing bike parking stations and raised planting beds. For youth ages 12 to 18. [Register here](#).

### April

#### Earth Port Film Festival - Saturday, April 21

The [10th Earth Port Film Festival](#) will screen short films that tell stories of people taking action worldwide to address the environmental challenges facing our planet.

#### Newburyport Documentary Film Festival - Sunday, April 28

The Newburyport Documentary Film Festival will be sponsoring two films which aim to spotlight sustainable fishing practices. *Last Man Fishing* explores the contrast between industrial and sustainable fishing methods. The *Oyster Revival: Restoring Our Waters* highlights efforts to rejuvenate oyster populations and marine ecosystems. Showings will be at the Firehouse.

#### 2024 Forever Green Newburyport - throughout April

Watch for events throughout Earth Month. Programs will engage community members of all ages on sustainable practices, emphasizing the principles of reducing, reusing, and recycling.

#### PEG Rail Trail Garden Expansion, starts in April

The Women in Action Huddle, a volunteer group from the Peg Center, will double the size of their vegetable plot near Parker Street, which grows produce for organizations feeding local people in need. Volunteers, including middle and high school students, will construct and maintain the gardens.

#### Sullivan Building Mural - April

The Newburyport Housing Authority is joining forces with the Newburyport Recreation and Youth Services to create a vibrant mural at the Sullivan Building, illustrating diverse ways in which individuals can champion climate resiliency.

### May

#### Newburyport Choral Society May 4 & May 5

A Spring Concert "Resilience and Hope" offers a moving musical program celebrating the valor and strength of the human spirit—resilience and courage in facing the challenges of war, discrimination, pandemics, and climate threats—and the redeeming power of hope.

Follow the [Community Action Project website](#) for the latest updates on Community Partner Resiliency events this Spring!

# Adapting Historic Homes & Buildings for Climate Change

**O**ur coastal city of Newburyport, rich in history and memories, now faces new challenges as rising sea levels and extreme weather are threats to our cherished historic homes.

Our historic buildings, with their unique designs and materials, require special attention. While they may not have been built for today's climate realities, we can adapt them. Regular maintenance is one key. By taking care of these old structures, we prevent severe damage and costly future repairs.

Energy conservation is also at the heart of preserving our historic homes. Retrofitting these buildings makes them more energy-efficient and aligns with our sustainability goals. It's about keeping the old charm while embracing new, eco-friendly practices.

There's a myth that old homes are energy hogs. Not necessarily true! Many were designed with features that naturally keep them cool in summer and warm in winter. Thick walls, high ceilings, and strategic window placements help regulate indoor temperatures. By enhancing these features and adding modern touches, we can improve energy efficiency.

Did you know our historic buildings hold a lot of "embodied energy"? This is all the energy that went into making them, from the bricks to the beams. Demolishing and rebuilding use more energy and resources, adding to carbon emissions. So, by keeping and upgrading our historic homes, we're actually being more environmentally friendly.

Climate change is a reality, and we need to prepare our homes. Here are some strategies:

- Wet Proofing and elevating systems to protect against flooding
- Upgrading gutters and downspouts for heavy rains
- Changing the landscape to improve drainage
- Using temporary barriers to protect against storms

See **Historic Homes**, Page 4

## The Cushing House

### Preserving History, Embracing Resilience

The Museum of Old Newbury, housed in the historic 1808 Cushing House, is in the process of reconstructing the gutter systems and restoring Federal period architectural elements of the mansion's exterior.

The project aims to serve as a benchmark for integrating climate resilience into the preservation of historic buildings across the region. Historic sites, like the Cushing House, can play a pivotal role in addressing climate change by acting as educational hubs and exemplifying adaptive restoration.



Watch for more information on this initiative from the museum on their social media channels and newsletters.

Resilient Newburyport is honored to support projects like the Cushing House gutter restoration through our grant-funded Community Action Project!

### Newburyport Preservation Trust's 'Preservation Week' to Highlight Building Resilience

The Newburyport Preservation Trust annual Preservation Week is scheduled for May 17-19. The event's keynote presentation will address protecting Salem's *House of Seven Gables*, related buildings and grounds from the impact of rising seas and storm surge. Watch for the event schedule [here](#).





Image courtesy of Micheal Kent



Image courtesy of Micheal Kent



Image courtesy of Micheal Kent

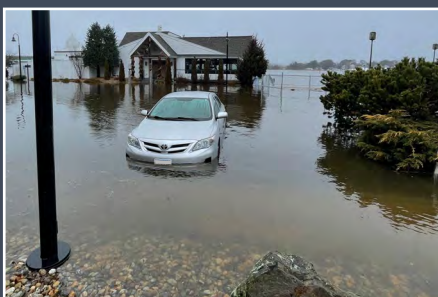


Image courtesy of Bill Mullens



A storm just off the coast, combined with an inch of rain and an astronomical high tide of over 9 feet, and 3 feet of storm surge caused significant flooding on January 13<sup>th</sup>, inundating low-lying areas along the Merrimack River and on Plum Island. The area was still trying to recover from damage caused by a storm 3 days earlier.

- Continued from Page 3

We can choose between long-term solutions, like elevating the entire structure, or short-term adaptations, like installing flood barriers. Each home will have its own best approach, considering its design and location.

Our historic homes are more than just buildings; they're a testament to our history and community. By taking steps to adapt them to today's climate challenges, we're not just protecting our past; we're ensuring a sustainable future for Newburyport.

## Books on Climate!

Our Climate Activists have created a **reading list for all ages** with recommended books on climate related topics. Check it out by scanning this QR code with your phone camera.



## Have You Signed Up for Code Red Alerts?

Newburyport's Emergency Communication Network CODE RED?

CODE RED can alert you of critical situations. (Examples include local Amber Alerts, boil water issue, Station Seabrook impacting event, shelter in place etc.)

Alerts can be sent to your phone or mobile device by text message or TTY. [Register for Code Red here.](#)

## Keep in Touch!

Select "Resiliency" under News and Announcements on the City's [Subscriptions](#) page.

For questions or to get involved, email: [resilientnewburyport@gmail.com](mailto:resilientnewburyport@gmail.com).

We're making headway on social media! Help us by spreading the word:

