

DOROTHY E. LUCEY DRIVE

CONDOMINIUM PLAN
IN
NEWBURYPORT, MASS.

62
374
(446)

SCALE: 1" = 20' 0' 10' 20' 40' 60' 80' FEBRUARY 13, 2004

HAYES ENGINEERING, INC.
CIVIL ENGINEERS &
LAND SURVEYORS
603 SALEM STREET
WAKEFIELD, MASS. 01880
TEL. (781) 246-2800



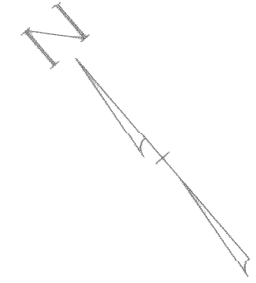
I CERTIFY THAT THIS PLAN FULLY AND ACCURATELY DEPICTS THE LOCATION AND DIMENSIONS OF BUILDINGS 1, 2, 3, 4 AND 7 - PHASE III, AS BUILT, AND FULLY LISTS THE UNITS CONTAINED THEREIN AT THE "MOSELEY VILLAGE CONDOMINIUM" IN NEWBURYPORT, MASS. UNIT NUMBERS: 1, 2, 3, 4, 6, 8, 10, 12, 13 AND 15.
DATE: FEB. 18, 2004



I CERTIFY THAT THE PROPERTY LINES SHOWN ON THIS PLAN ARE THE LINES DIVIDING EXISTING OWNERSHIPS, AND THE LINES OF STREETS OR WAYS SHOWN ARE THOSE OF PUBLIC OR PRIVATE STREETS OR WAYS ALREADY ESTABLISHED, AND THAT NO NEW LINES FOR DIVISION OF EXISTING OWNERSHIP OR FOR NEW WAYS ARE SHOWN.
DATE: FEB. 18, 2004



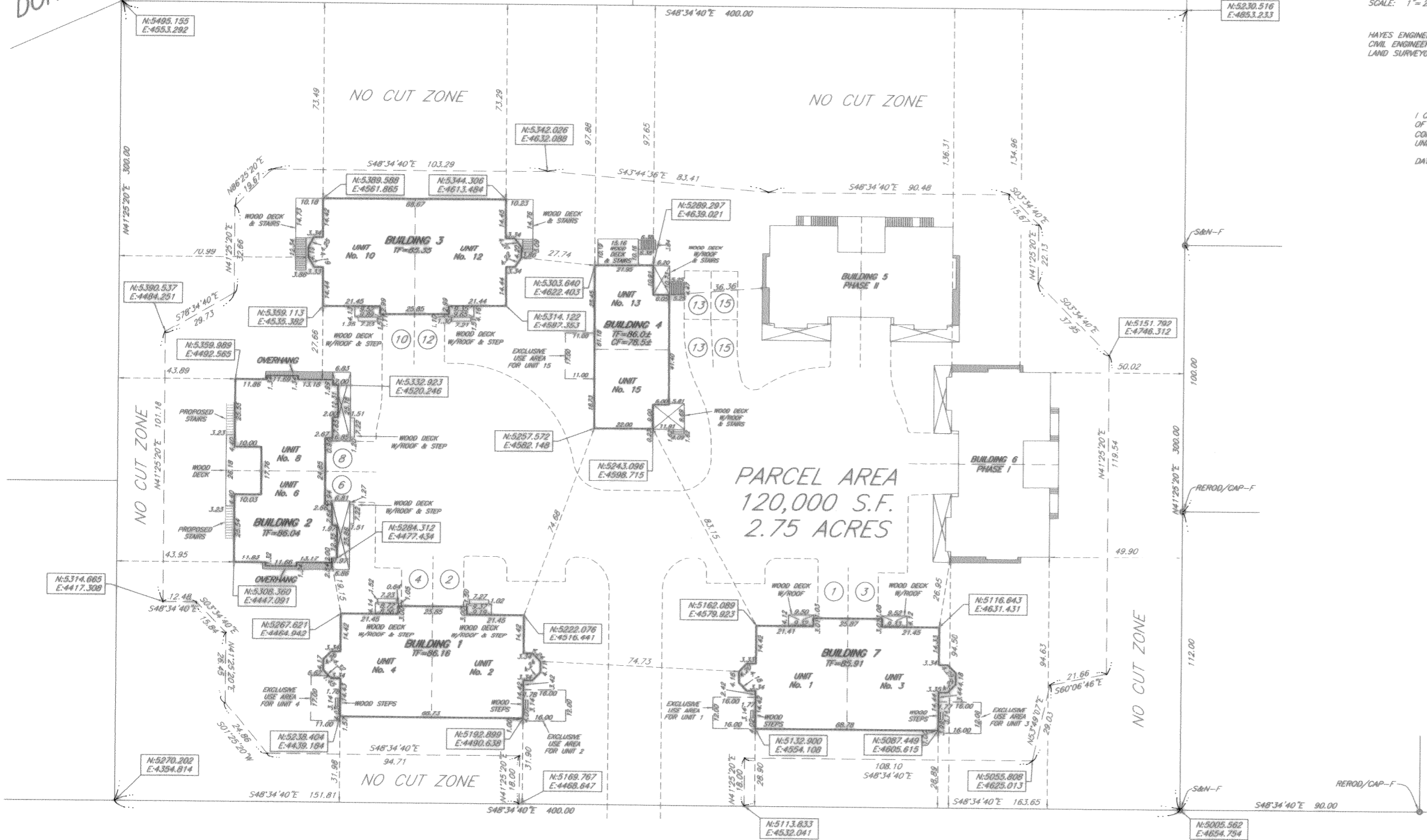
- LEGEND:
- EXISTING EDGE PAVEMENT
 - PARKING SPACE NUMBER (1)
 - PLAN COORDINATES (N:6878.727 E:6905.138)
 - EXCLUSIVE USE AREA (TYP)
 - EXCLUSIVE USE AREA



I CERTIFY THAT I HAVE CONFORMED WITH THE RULES AND REGULATIONS OF THE REGISTERS OF DEEDS IN PREPARING THIS PLAN.
HAYES ENGINEERING, INC.

PLAN BOOK 374 PLAN 62
RECORD REGISTRY OF DEEDS CO. DIST. SALEM, MASS.
Received February 19, 2004
with Amndt. Moseley Village LLC
REC. B. 22100P. 151
Attest: [Signature]
Register of Deeds (446)

ZONE: RES. II (2 FAMILY)
MINIMUM SETBACKS:
FRONT = 25'
SIDE = 20'
REAR = 25'
MIN. FRONTAGE = 120.00 FEET
MIN. LOT AREA = 15,000 S.F.



MOSELEY AVENUE

RE: HES/CONDO-PHASE III, Eng. RLV