

LOCUS MAP N.T.S.

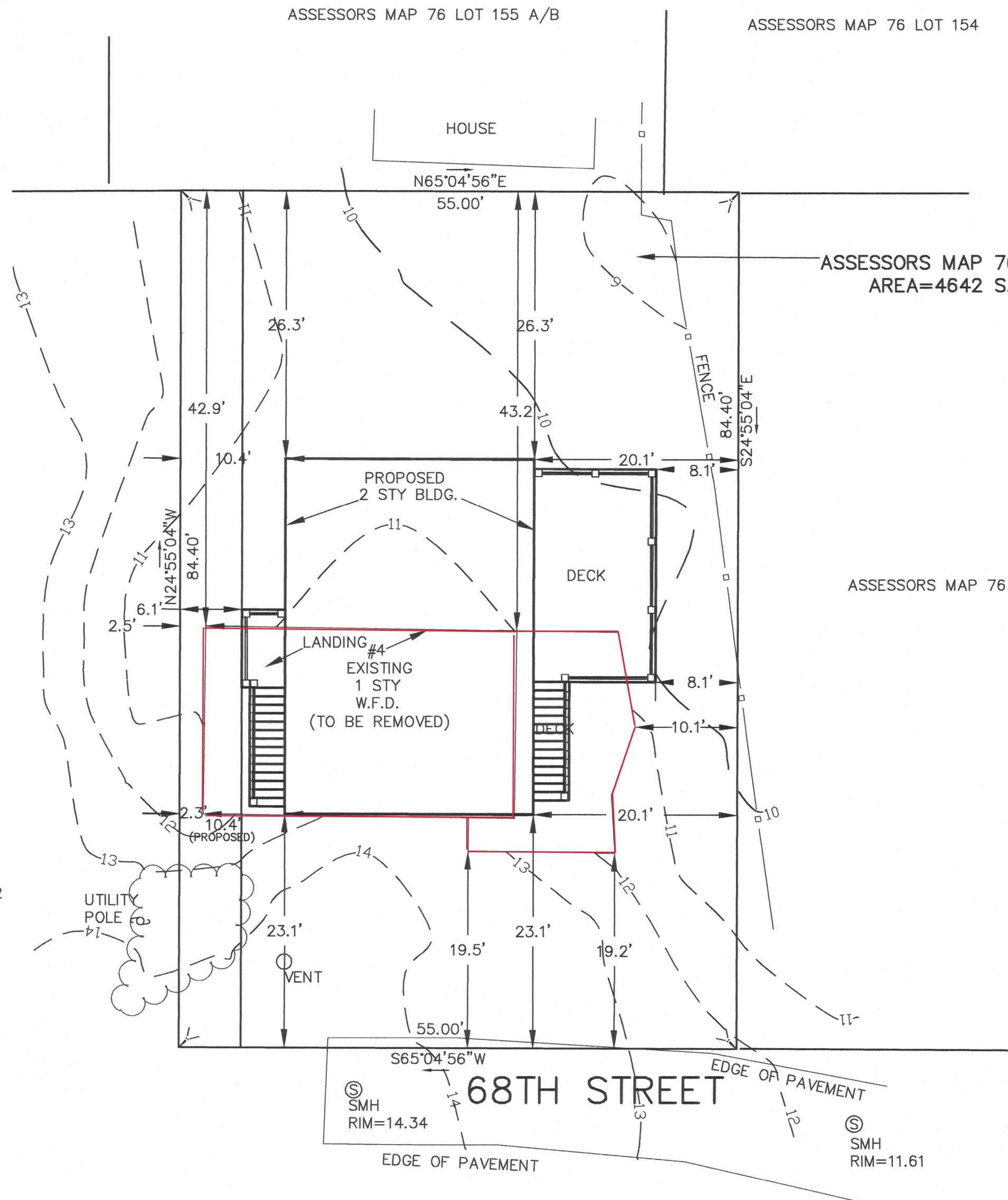
ASSESSORS MAP 76 LOT 155 A/B

ASSESSORS MAP 76 LOT 154

ASSESSORS MAP 76 LOT 150

ASSESSORS MAP 76 LOT 152
AREA=4642 S.F.±

ASSESSORS MAP 76 LOT 153



NOTES

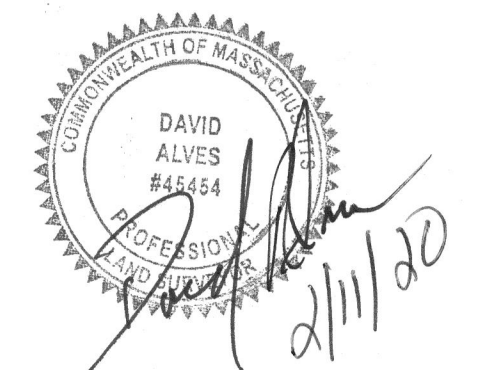
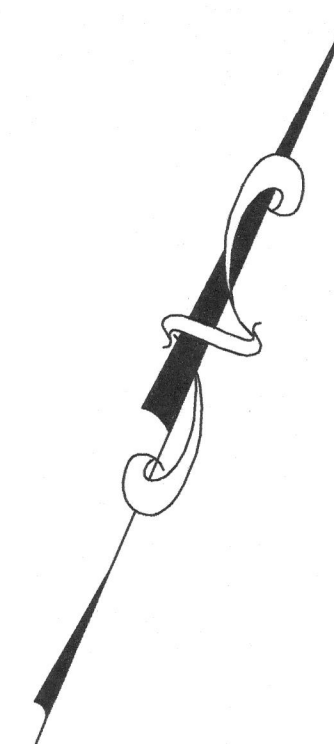
- 1.) THIS PLAN IS THE RESULT OF AN ON GROUND SURVEY PERFORMED BY WAYPOINT SURVEYING SERVICES IN AUGUST OF 2019.
- 2.) SUBJECT PARCEL IS IN FLOOD ZONE AO WITH A BASE FLOOD ELEVATION OF 9 ACCORDING TO FEMA MAP #25009C0129F WITH AN EFFECTIVE DATE OF JULY 3, 2012
- 3.) ELEVATION DATUM IS NAD 88.

4.) PROPOSED CONSTRUCTION DESIGNED BY:
 RYAN McSHERA
 RED BARN ARCHITECTURE
 84 HIGH STREET
 IPSWICH MA. 01938

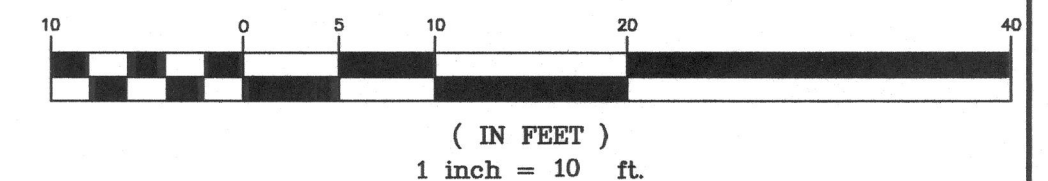
ZONING TABLE

ZONING DISTRICT: R3 (OVERLAY)

	REQUIRED	PROPOSED	EXISTING
MIN. LOT AREA	8000 S.F.	4642 S.F.	4642 S.F.
MIN. FRONTAGE	80'	55.00'	55.00'
MIN. FRONT YD.	20'	23.1'	19.5'
MIN. SIDE YD.	20'	6.1'	2.3'
MIN. REAR YD.	20'	26.3'	42.9'



GRAPHIC SCALE



PROPOSED SITE PLAN
 4 68TH STREET
 NEWBURYPORT, MASSACHUSETTS
 ASSESSORS MAP 76 LOT 152

PREPARED FOR
 JEFF MACDONALD

SCALE: 1" = 10' FEBRUARY 11, 2020

WAYPOINT SURVEYING SERVICES
 141 BRIDGE ROAD, SUITE 202-5
 SALISBURY, MASSACHUSETTS 01952
 (978) 505-5261

DRAWN BY: D.A.	SHEET #: 1 of 1	CHECKED BY: D.A.
FILE #: 4380	DESIGN BY: D.A.	

REVISION