

16

Approved by the Newburyport
Zoning Board of Appeals for a;

SFAC
Date 12/03/03

Undersigned Chair of
the Zoning Board of Appeals
Edmund P. Reilly

Revisions by Zoning Board:

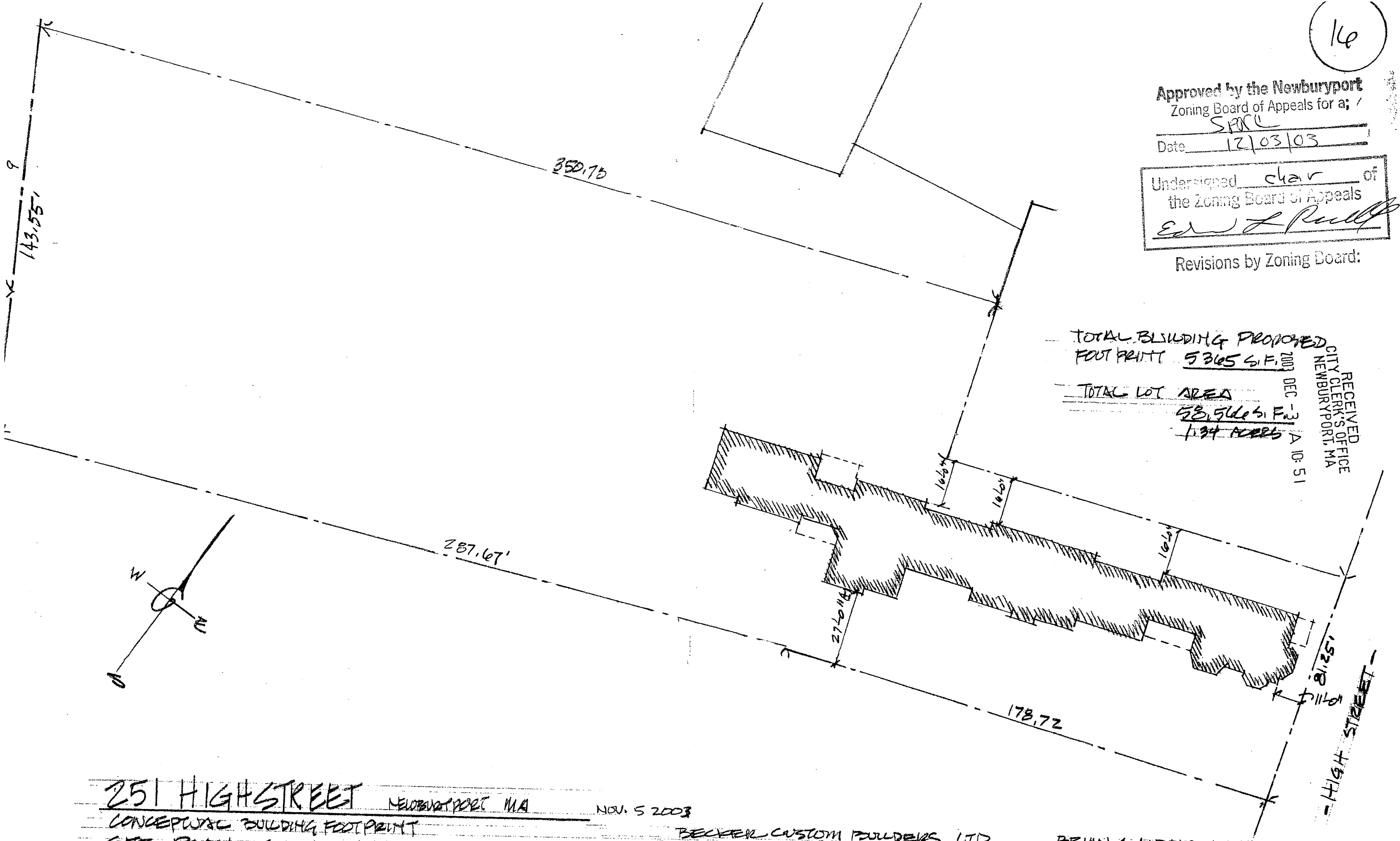
TOTAL BUILDING PROPOSED
FOOTPRINT 5365 S.F.

TOTAL LOT AREA

58,546 S.F.

1.34 ACRES

RECEIVED
CITY CLERK'S OFFICE
NEWBURYPORT, MA
DEC - 3
A 10:51

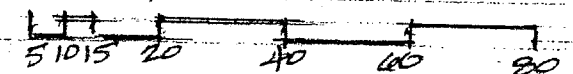


251 HIGH STREET NEWBURYPORT MA

NOV. 5 2003

CONCEPTUAL BUILDING FOOTPRINT

SITE PLAN - SCALE



BECKER CUSTOM BULDERS LTD

978 462 2107

BEIRN A. LIBBY ARCHITECT

978 462 0405

920 498 2172

RECEIVED
CITY CLERK'S OFFICE
NEWBURYPORT, MA

2003 DEC -3 A 10:51

251 High Street - Newburyport

Three luxury Residential Condominium Living Units

Becker Custom Builders Ltd.
Newbury, MA 978-462-2107

Brian A. Libby Architect
520-498-2172 978-462-0405

REVISED 9/9/03
" 10/15/03
" 10/27/03
" 10/30/03



SCALE 0 4 8 16 24 FEET

Approved by the Newburyport
Zoning Board of Appeals for a;

SPNC
Date 12/03/03

Undersigned chair of
the Zoning Board of Appeals
Ed L. Pull

Revisions by Zoning Board: