

- LEGEND**
- Proposed Shade Trees
  - Proposed Ornamental Trees
  - Lawn
  - STORMWATER BASIN

architect:

**gsd**  
 GSD Associates, LLC.  
 44 MAIN STREET  
 NORTH ANDOVER, MA 01845  
 Tel: 978-688-5422  
 www.gsd-assoc.com

civil engineer:

**The Morin-Cameron GROUP, INC.**  
 CIVIL ENGINEERS | ENVIRONMENTAL CONSULTANTS  
 LAND SURVEYORS | LAND USE PLANNERS  
 66 ELM STREET  
 FRAMINGHAM, MA 01903  
 Tel: 978-777-8888  
 www.morincameron.com

landscape architect:

**Radner Design Associates, LLC**  
 945 CONCORD STREET  
 SUITE 100  
 FRAMINGHAM, MA 01701  
 Tel: 978-686-6444  
 www.radnerdesign.com

owner:

**THREE BOSTON WAY, LLC**  
 231 SUTTON STREET, SUITE 1B  
 North Andover, MA 01845  
 Tel: 978-688-5422

sheet title:

**Colored Context Plan**

project name:

**3 BOSTON WAY**  
 3 BOSTON WAY  
 NEWBURYPORT, MA

issue date: 10/23/19

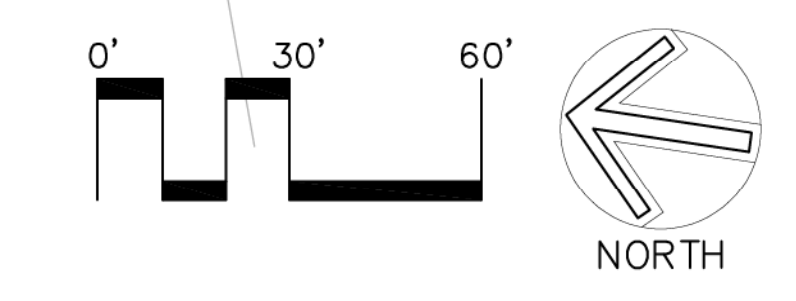
revisions:  
 1 Planning Bd Review 12/11/2019  
 2 Notice of Intent 12/20/2019  
 3 Planning Bd Review 01/23/2019

dr: chk.

© 2019 Radner Design Associates, Inc.  
 ALL RIGHTS RESERVED. ALL IDEAS, DESIGN PLANS AND SPECIFICATIONS ARE THE PROPERTY OF RADNER DESIGN ASSOCIATES, INC. RIGHTS OF USE ARE CONDITIONAL AND ARE LIMITED TO A ONE-TIME USE TO CONSTRUCT A SINGLE PROJECT ON THE SITE SO INDICATED. USE OF THE WORK AND ANY DERIVATIVE WORKS WITHOUT THE WRITTEN CONSENT OF RADNER DESIGN ASSOCIATES, INC. IS STRICTLY PROHIBITED. THE USE OR REPRODUCTION OF THESE PLANS FOR ANY OTHER CONSTRUCTION OR PROJECT APPLICATION IS STRICTLY PROHIBITED WITHOUT PRIOR WRITTEN PERMISSION OF RADNER DESIGN ASSOCIATES, INC. AND THE LANDSCAPE ARCHITECT WHOSE SIGNATURE AND SEAL MAY BE AFFIXED TO THESE DRAWINGS.

job number:  
**DA 19-22**


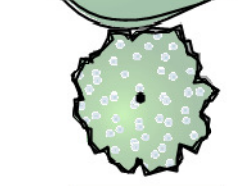


**L0.0**



1:25 IMAGE BE FROM EXISTING PHOTO © 2017 FROM MORIN-CAMERON GROUP



**LEGEND**

-  Proposed Shade Trees
-  Proposed Ornamental Trees
-  Lawn
-  STORMWATER BASIN

architect:

**GSD**  
 GSD Associates, LLC.  
 CIVIL ENGINEERS | ENVIRONMENTAL CONSULTANTS  
 146 MAIN STREET  
 NORTH ANDOVER, MA 01845  
 Tel: 978-688-5422  
 www.gsd-assoc.com

civil engineer:

**The Morin-Cameron GROUP, INC.**  
 CIVIL ENGINEERS | ENVIRONMENTAL CONSULTANTS  
 66 ELM STREET, SUITE 100  
 NORTH ANDOVER, MA 01845  
 Tel: 978-772-8888  
 www.morincameron.com

landscape architect:

**Radner Design Associates, Inc.**  
 945 CONCORD STREET  
 SUITE 100  
 NORTH ANDOVER, MA 01845  
 Tel: 978-688-5422  
 www.radnerdesign.com

owner:

**THREE BOSTON WAY, LLC**  
 231 SUTTON STREET, SUITE 1B  
 North Andover, MA 01845  
 Tel: 978-688-5422

sheet title:

**Colored Plan**

project name:

**3 BOSTON WAY  
 NEWBURYPORT, MA**

issue date: 10/23/19

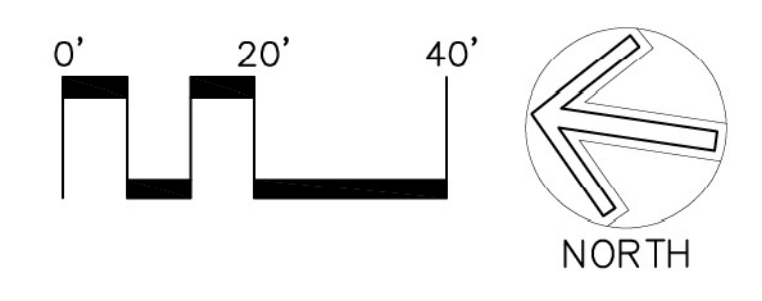
- revisions:
- 1 Planning Bd Review 12/11/2019
  - 2 Notice of Intent 12/20/2019
  - 3 Planning Bd Review 01/23/2020

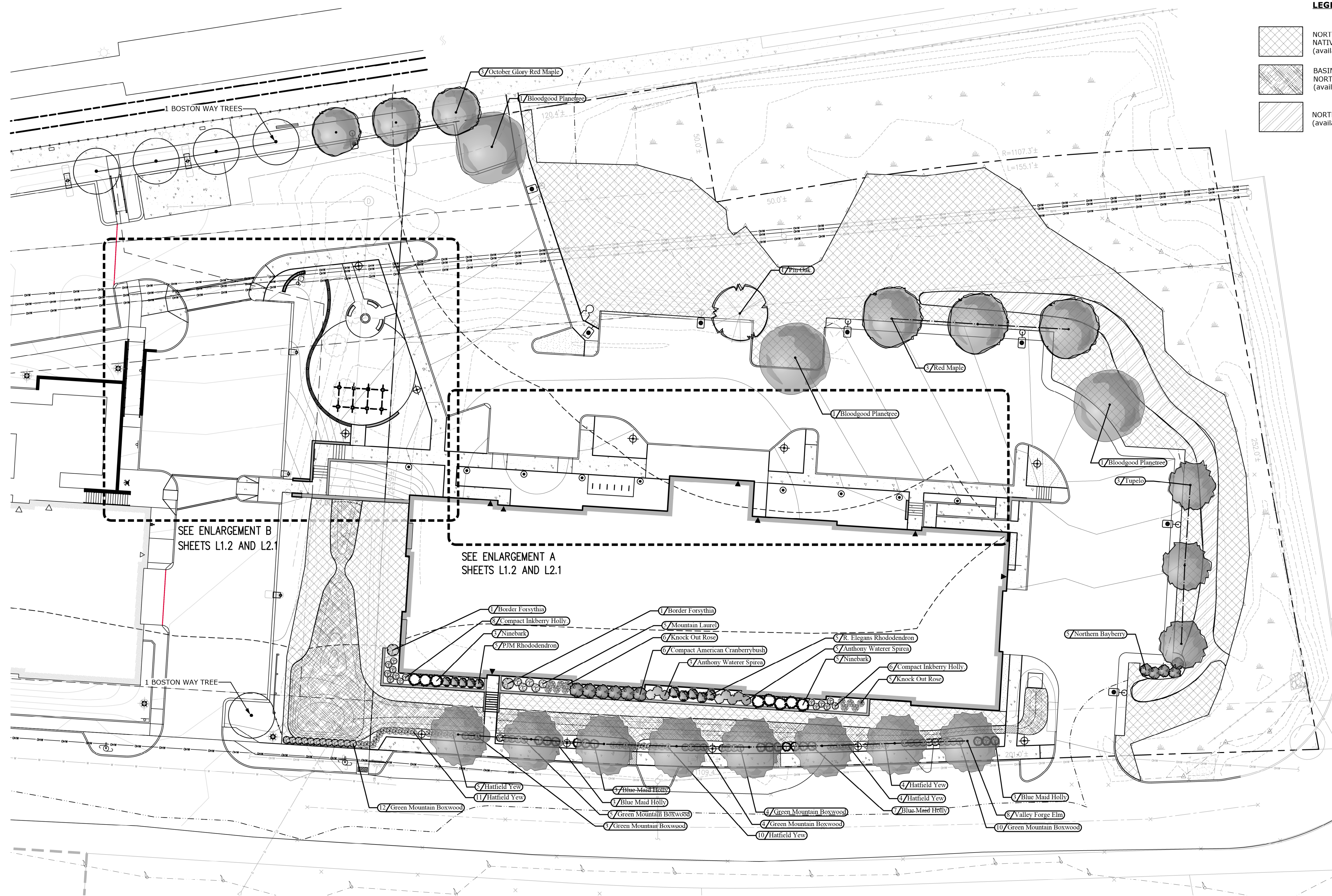
dr. chk.

© 2019 Radner Design Associates, Inc. ALL RIGHTS RESERVED. ALL IDEAS, DESIGNS, PLANS AND SPECIFICATIONS ARE THE PROPERTY OF RADNER DESIGN ASSOCIATES, INC. RIGHTS OF USE ARE CONDITIONAL AND ARE LIMITED TO A ONE-TIME USE TO CONSTRUCT A SINGLE PROJECT ON THE SITE SO INDICATED. USE OF THE WORK AND ANY DERIVATIVE WORKS WITHOUT THE WRITTEN PERMISSION OF RADNER DESIGN ASSOCIATES, INC. IS STRICTLY PROHIBITED. THE USE OR REPRODUCTION OF THESE PLANS FOR ANY OTHER CONSTRUCTION OR OTHER APPLICATION IS STRICTLY PROHIBITED WITHOUT PRIOR WRITTEN PERMISSION OF RADNER DESIGN ASSOCIATES, INC. AND THE LANDSCAPE ARCHITECT WHOSE SIGNATURE AND SEAL MAY BE AFFIXED TO THESE DRAWINGS.

job number:  
**DA 19-22**

**L0.1**





**LEGEND**

- NORTHEAST UPLAND NATIVE/NATURALIZED WILDFLOWER MIX (available from Southern Tier Consulting)
- BASIN BOTTOM SEED MIX NORTHEAST WETLAND SHRUB HERB MIX (available from Southern Tier Consulting)
- NORTHEAST WETLAND HUMMOCK MIX (available from Southern Tier Consulting)

**PLANT SCHEDULE - Sheet L1.1**

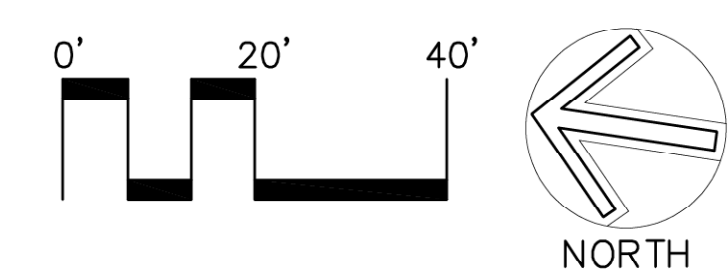
Qty	Latin Name	Common Name	Scheduled Size	Remarks
<b>Shade Trees</b>				
3	<i>Acer rubrum</i>	Red Maple	3.5-4" Cal.	B&B, Full, Symmetrical, High Branched
3	<i>Acer rubrum</i> 'October Glory'	October Glory Red Maple	3.5-4" Cal.	B&B, Full, Symmetrical, High Branched
3	<i>Nyssa sylvatica</i>	Tupelo	3.5-4" Cal.	B&B, Full, Symmetrical, High Branched
1	<i>Platanus acerifolia</i> 'Bloodgood'	Bloodgood Planetree	3.5-4" Cal.	B&B, Full, Symmetrical, High Branched
1	<i>Quercus palustris</i>	Pin Oak	3.5-4" Cal.	B&B, Full, Symmetrical, High Branched
8	<i>Ulmus americana</i> 'Valley Forge'	Valley Forge Elm	3.5-4" Cal.	B&B, Full, Symmetrical, High Branched
<b>Shrubs</b>				
38	<i>Buxus x</i> 'Green Mountain'	Green Mountain Boxwood	18-24" HT.	Container, 2.5' on center
8	<i>Clethra alnifolia</i> 'Hummingbird'	Hummingbird Summersweet	18-24" HT.	Container
2	<i>Forsythia intermedia</i>	Border Forsythia	3-4' HT.	Container
14	<i>Ilex glabra</i> 'Densa'	Compact Inkberry Holly	24-30" HT.	Container
16	<i>Ilex x</i> 'meserveae' 'Blue Maid'	Blue Maid Holly	24-30" HT.	Container, 3.5' on center
5	<i>Kalmia latifolia</i> 'Olympic Fire'	Mountain Laurel	24-30" HT.	Container
5	<i>Myrica pennsylvanica</i>	Northern Bayberry	7 Gal.	Container
8	<i>Physocarpus opulifolium</i> 'Diabolo'	Ninebark	3-4" HT.	Container
5	Rhododendron 'PJM'	PJM Rhododendron	24-30" HT.	B&B
5	Rhododendron 'Roseum Elegans'	Roseum Elegans Rhododendron	30-36" HT.	B&B
11	Rosa x 'Knock Out'	Knock Out Rose	5 Gal.	Container
8	<i>Spiraea bumalda</i> 'Anthony Waterer'	Anthony Waterer Spirea	5 Gal.	Container
34	<i>Taxus x</i> media 'Hatfield'	Hatfield Yew	18-24" HT.	Container, 2.5' on center
6	<i>Viburnum opulus x americanum</i>	Compact American Cranberrybush	3-4" HT.	Container

**PLANT SCHEDULE - Sheet L1.2**

Qty	Latin Name	Common Name	Scheduled Size	Remarks
<b>Shade Trees</b>				
6	<i>Zelkova serrata</i> 'Musashino'	Musashino Zelkova	3.5-4" Cal.	B&B, Full, Symmetrical, High Branched
<b>Ornamental Trees</b>				
3	<i>Malus x</i> 'Prairifire'	Prairifire Crabapple	8-10'	B&B, Full, Picturesque, Specimen
<b>Shrubs</b>				
5	<i>Buddleia davidii</i> 'Black Knight'	Black Knight Butterfly Bush	3 Gal.	Container
37	<i>Buxus x</i> 'Green Mountain'	Green Mountain Boxwood	18-24" HT.	Container, 2.5' on center
6	<i>Euonymus fortunei</i> 'Coloratus'	Purpleleaf Wintercreeper	2 gal.	Container
5	<i>Forsythia intermedia</i>	Border Forsythia	3-4' HT.	Container
2	<i>Hibiscus syriacus</i>	Rose of Sharon	3-4" HT.	Container
6	<i>Hydrangea macrophylla</i> 'All Summer Beauty'	All Summer Beauty Hydrangea	7 Gal.	Container
4	<i>Ilex crenata</i> 'Compacts'	Compact Japanese Holly	18-24" HT.	Container
2	<i>Ilex crenata</i> 'Steeds'	Steeds Holly	36-42" HT.	Container
10	<i>Ilex glabra</i> 'Densa'	Compact Inkberry Holly	24-30" HT.	Container
7	<i>Juniperus chinensis</i> sargentii 'Glaucia'	Blue Sargent Juniper	12-18" Spr.	Container
6	<i>Leucothoe fontanesiana</i> 'Girard's Rainbow'	Rainbow Leucothoe	18-24" HT.	Container
5	Rhododendron 'Blauaus Pink'	Blauaus Pink Azalea	18-24" HT.	Container
2	Rhododendron 'Roseum Elegans'	Roseum Elegans Rhododendron	24-30" HT.	B&B
47	<i>Rhus aromatica</i> 'Gro-Low'	Gro-Low Sumac	3 gal.	Container
6	<i>Spiraea japonica</i> 'Shirobana'	Shirobana Spirea	12-18" HT.	Container
2	<i>Syringa patula</i> 'Miss Kim'	Miss Kim Lilac	30-36" HT.	Container

**Perennials, Grasses and Groundcovers**

5	<i>Calamagrostis x acutiflora</i> 'Karl Foerster'	Foerster's Feather Reed Grass	2 Gal.	Container
93	<i>Carex pennsylvanica</i>	Oak Sedge	1 Gal.	Container
11	<i>Coreopsis verticillata</i> 'Moonbeam'	Moonbeam Coreopsis	1 Gal.	Container
14	<i>Echinacea purpurea</i> 'Harvest Moon'	Purple Coneflower	1 Gal.	Container
34	<i>Hemerocallis x</i> 'Pardon Me'	Pardon Me Daylily	1 Gal.	Container
23	<i>Hosta 'Frances'</i>	Variegated Hosta	1 Gal.	Container
79	<i>Liriope muscari</i> 'Variegata'	Variegated Liriope	1 Gal.	Container
18	<i>Nepeta x faassenii</i> 'Walker's Low'	Walker's Low Catmint	1 Gal.	Container
11	<i>Pennisetum alopecuroides</i>	Fountain Grass	2 Gal.	Container
9	<i>Phlox paniculata</i>	Garden Phlox	1 Gal.	Container
16	<i>Rudbeckia fulgida</i> 'Goldsturm'	Goldsturm Black Eyed Susan	1 Gal.	Container



**project name:**  
3 BOSTON WAY  
3 BOSTON WAY  
NEWBURYPORT, MA

**sheet title:**  
Planting  
Plan

**owner:**  
THREE BOSTON WAY, LLC  
231 SUTTON STREET, SUITE 1B  
North Andover, MA 01845  
Tel: 978-688-5422

**landscape architect:**  
Radner Design Associates, Inc.  
945 CONCORD STREET  
SUITE 100  
NORTH ANDOVER, MA 01845  
Tel: 978-688-5422  
www.radnerdesign.com

**civil engineer:**  
The Morin-Cameron GROUP, INC.  
CIVIL ENGINEERS | ENVIRONMENTAL CONSULTANTS  
LAND SURVEYORS | LAND USE PLANNERS  
68 ELM STREET  
NORTH ANDOVER, MA 01845  
Tel: 978-777-8886  
www.morincameron.com

**architect:**  
GSD Associates, LLC  
146 MAIN STREET  
NORTH ANDOVER, MA 01845  
Tel: 978-688-5422  
www.gsd-assoc.com

**issue date:** 10/23/19

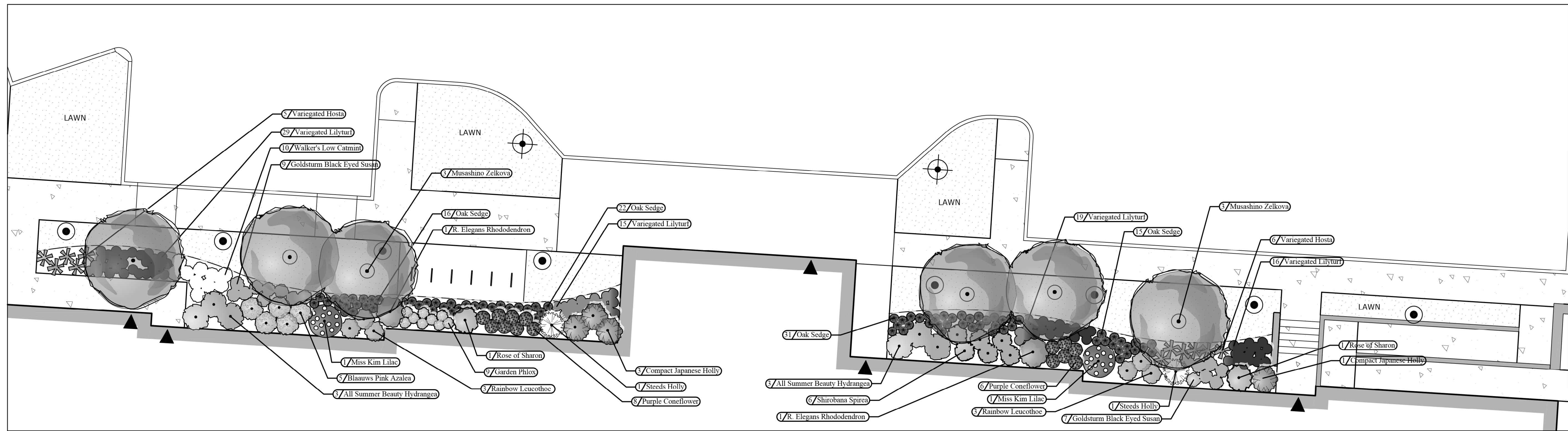
**revisions:**

- Planning Bd Review 12/11/2019
- Notice of Intent 12/20/2019
- Planning Bd Review 01/23/2020

**dr:** chk.

**job number:** RDA 19-22

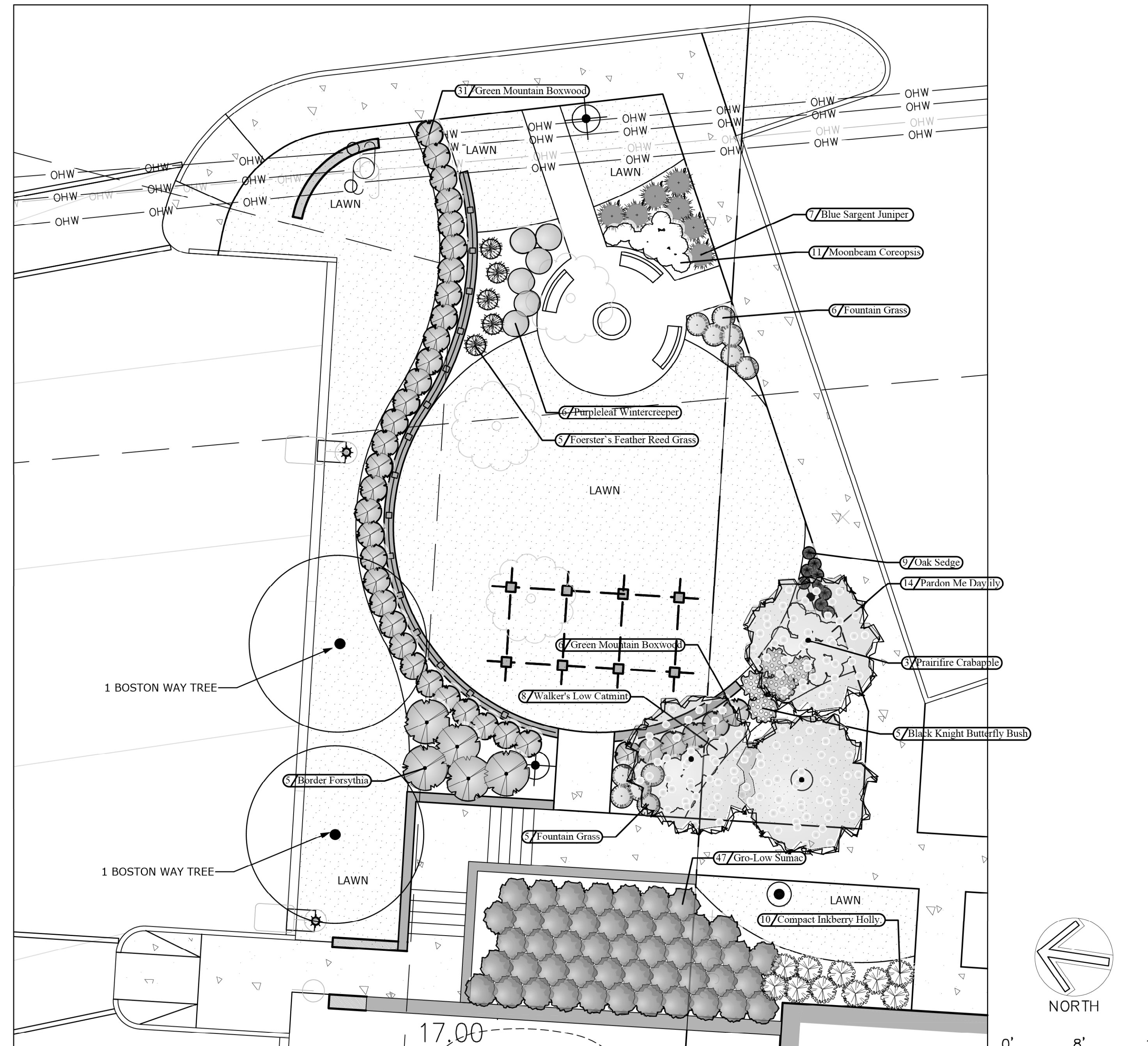
**L1.1**



1 PLANTING ENLARGEMENT A  
L1.2 SCALE: 1/8"=1'-0"

**NOTES**

- FURNISH AND INSTALL PLANTS AS SHOWN. CONTRACTOR SHALL BE RESPONSIBLE FOR QUANTITY OF SHRUBS GRAPHICALLY SHOWN ON PLANS. IF THERE IS A DISCREPANCY BETWEEN PLANT LIST QUANTITIES AND GRAPHICS, THE GRAPHIC SHALL TAKE PRECEDENCE.
- PRIOR TO THE START OF EXCAVATION FOR THE PROJECT BOTH ON AND OF THE SITE, THE CONTRACTOR SHALL NOTIFY DIGSAFE AND BE PROVIDED A DIGSAFE NUMBER INDICATING THAT EXISTING UTILITIES HAVE BEEN LOCATED AND MARKED.
- CONTRACTOR SHALL BEGIN 90 DAY MAINTENANCE PERIOD IMMEDIATELY UPON PLANTING AND WILL CONTINUE UNTIL FINAL ACCEPTANCE.
- CONTRACTOR SHALL VERIFY TREE REMOVALS WITH LANDSCAPE ARCHITECT PRIOR TO CONSTRUCTION START.
- CONTRACTOR SHALL MAINTAIN POSITIVE DRAINAGE AWAY FROM BUILDING FOUNDATIONS, STRUCTURES, AND PLANTING BEDS.
- MAXIMUM SLOPE WITHIN DISTURBED AREAS SHALL NOT EXCEED 3:1, UNLESS OTHERWISE NOTED.
- PLANTS SHALL BEAR THE SAME RELATIONSHIP TO FINISH GRADE AS TO ORIGINAL GRADES BEFORE DIGGING.
- PLANT MATERIALS SHALL CONFORM TO THE GUIDELINES ESTABLISHED BY "THE AMERICAN STANDARD FOR NURSERY STOCK", PUBLISHED BY THE AMERICAN ASSOCIATION OF NURSERMEN.
- PLANTS TO BE BALLED IN BURLAP OR CONTAINERIZED.
- MULCH FOR PLANTED AREAS TO BE AGED PINE BARK: PARTIALLY DECOMPOSED, DARK BROWN IN COLOR AND FREE OF WOOD CHIPS THICKER THAN 1/4 INCH.
- PLANTING SOIL MIX: LOAM THOROUGHLY INCORPORATED WITH ROTTED MANURE PROPORTIONED 5 C.Y. TO 1 C.Y. OR EQUIVALENT. USE OF PEAT MOSS IS PROHIBITED.
- THE LANDSCAPE CONTRACTOR SHALL GUARANTEE PLANT MATERIALS FOR ONE (1) FULL YEAR FROM DATE OF ACCEPTANCE. REQUEST THE LANDSCAPE ARCHITECT PROVIDE A WRITTEN LETTER OF ACCEPTANCE UPON COMPLETION OF EACH PHASE.
- PLANT MATERIALS ARE SUBJECT TO THE APPROVAL OF THE LANDSCAPE ARCHITECT, AT THE NURSERY, AND AT THE SITE.
- LANDSCAPE ARCHITECT TO FLAG TREES TO BE TRANSPLANTED PRIOR TO CONSTRUCTION START.
- AREAS OF THE SITE WHICH HAVE BEEN DISTURBED AND NOT OTHERWISE DEVELOPED SHALL BE LOAMED WITH TOPSOIL TO A MINIMUM DEPTH OF 6", AND SEEDDED WITH A MIX CONSISTING OF 40% PERENNIAL RYE GRASS; 30% CHEWINGS FESCUE; 30% KENTUCKY BLUEGRASS.
- SCREENED IMAGES SHOW EXISTING CONDITIONS. WHERE EXISTING CONDITIONS LIE UNDER OR ARE IMPINGED UPON BY PROPOSED BUILDINGS AND/OR SITE ELEMENTS, THE EXISTING CONDITION WILL BE REMOVED, ABANDONED AND/OR CAPPED OR DEMOLISHED AS REQUIRED.
- THERE SHALL BE NO SUBSTITUTION OF PLANT SPECIES WITHOUT AUTHORIZATION BY THE LANDSCAPE ARCHITECT.
- NO PLANTING SHALL BE INSTALLED BEFORE ACCEPTANCE OF ROUGH GRADING.
- PLANTS TO BE THOROUGHLY WATERED AFTER INSTALLATION, AT LEAST TWICE WITHIN THE FIRST 24 HOURS.



2 PLANTING ENLARGEMENT B  
L1.2 SCALE: 1/8"=1'-0"

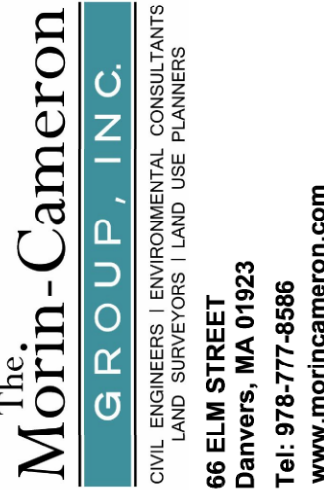


architect:



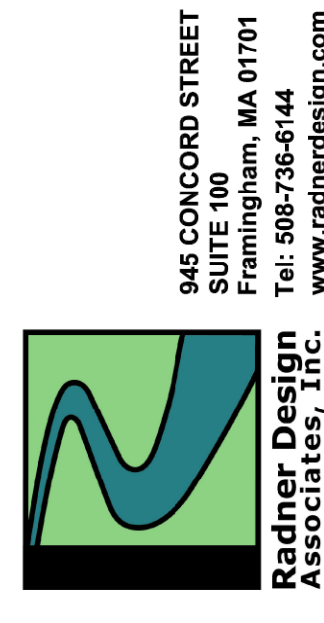
GSD Associates, LLC.  
468 MAIN STREET  
NORTH ANDOVER, MA 01845  
Tel: 978-688-5422  
www.gsd-assoc.com

civil engineer:



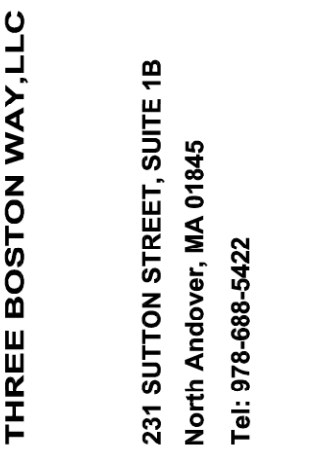
The Morin-Cameron GROUP, INC.  
CIVIL ENGINEERS | ENVIRONMENTAL CONSULTANTS  
LAND SURVEYORS | LAND USE PLANNERS  
68 ELM STREET  
NORTH ANDOVER, MA 01843  
Tel: 978-773-8866  
www.morincameron.com

landscape architect:



945 CONCORD STREET  
SUITE 100  
NORTH ANDOVER, MA 01845  
Tel: 978-688-5422  
www.radnerdesign.com

owner:



THREE BOSTON WAY, LLC  
231 SUTTON STREET, SUITE 1B  
North Andover, MA 01845  
Tel: 978-688-5422

sheet title:

Planting Enlargements

project name:

3 BOSTON WAY  
3 BOSTON WAY  
NEWBURYPORT, MA

issue date: 10/23/19

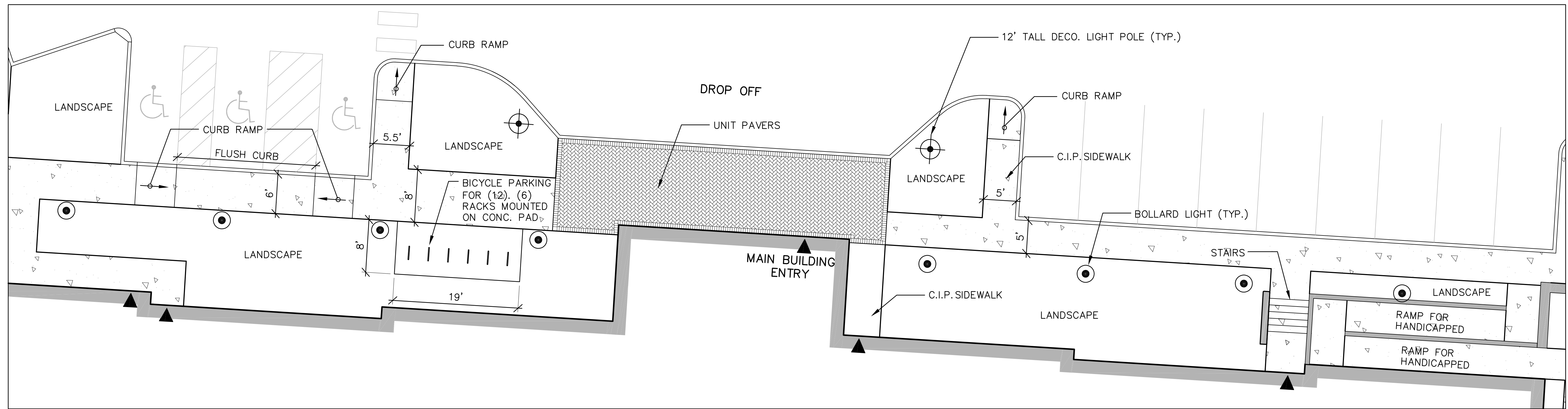
- revisions:
- 1 Planning Bd Review 12/11/2019
  - 2 Notice of Intent 12/20/2019
  - 3 Planning Bd Review 01/23/2019

dr: chc

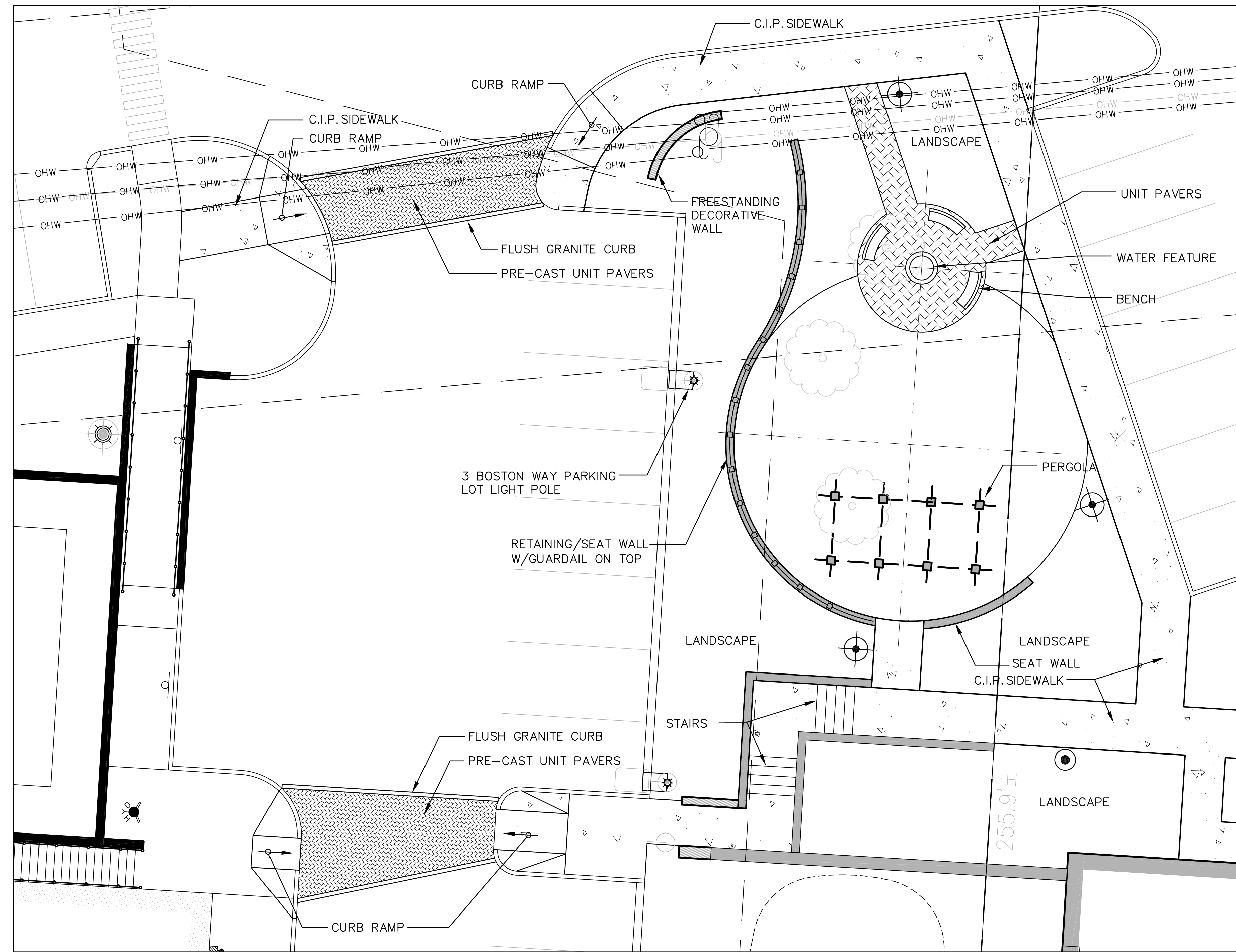
© 2019 Radner Design Associates, Inc. ALL RIGHTS RESERVED. ALL IDEAS, DESIGNS, PLANS AND SPECIFICATIONS ARE THE PROPERTY OF RADNER DESIGN ASSOCIATES, INC. RIGHTS OF USE ARE CONDITIONAL AND ARE LIMITED TO A ONE-TIME USE TO CONSTRUCT A SINGLE PROJECT ON THE SITE SO INDICATED. USE OF THE WORK AND ANY RESERVATIVE RIGHTS OF RADNER DESIGN ASSOCIATES, INC. OR ANY OTHER PARTY IS STRICTLY PROHIBITED WITHOUT PRIOR WRITTEN PERMISSION OF RADNER DESIGN ASSOCIATES, INC. AND THE LANDSCAPE ARCHITECT WHOSE SIGNATURE AND SEAL MAY BE AFFIXED TO THESE DRAWINGS.

job number:  
RDA 19-22

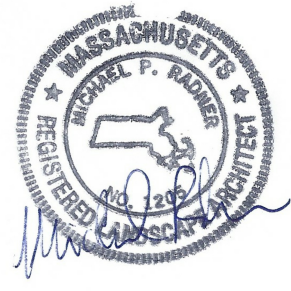
L1.2



1 ENLARGEMENT A  
SCALE: 1/8"=1'-0"



2 ENLARGEMENT B  
SCALE: 1/8"=1'-0"



architect:

**gso**  
GSD Associates, LLC  
146 MAIN STREET  
NORTH ANDOVER, MA 01845  
Tel: 978-688-5422  
www.gsd-assoc.com

civil engineer:

**The Morin-Cameron GROUP, INC.**  
CIVIL ENGINEERS | ENVIRONMENTAL CONSULTANTS  
LAND SURVEYORS | LAND USE PLANNERS  
66 ELM STREET  
DANVERS, MA 01923  
Tel: 978-777-8986  
www.morincameron.com

landscape architect:

945 CONCORD STREET  
SUITE 100  
FRAMINGHAM, MA 01701  
Tel: 508-736-6144  
www.radnerdesign.com  
**Radner Design Associates, Inc.**

owner:

THREE BOSTON WAY, LLC  
231 SUTTON STREET, SUITE 1B  
North Andover, MA 01845  
Tel: 978-688-5422

sheet title:

Site Improvements Enlargements

project name:

3 BOSTON WAY  
3 BOSTON WAY  
NEWBURYPORT, MA

issue date: 10/23/19

revisions:  
Planning Bd Review 12/11/2019  
Notice of Intent 12/20/2019  
Planning Bd Review 01/23/2019

dr. chk.

© 2019 Radner Design Associates, Inc.  
ALL RIGHTS RESERVED. ALL IDEAS, DESIGN, PLANS AND SPECIFICATIONS ARE THE PROPERTY OF RADNER DESIGN ASSOCIATES, INC. RIGHTS OF USE ARE CONDITIONAL AND ARE LIMITED TO A ONE-TIME USE TO CONSTRUCT A SINGLE PROJECT ON THE SITE SO INDICATED. USE OF THE WORK AND ANY DERIVATIVE WORK COVERED UNDER THIS AGREEMENT FOR OTHER PROJECTS IS PROHIBITED. STRICTLY PROHIBITED WITHOUT PRIOR WRITTEN PERMISSION OF RADNER DESIGN ASSOCIATES, INC. AND THE LANDSCAPE ARCHITECT WHOSE SIGNATURE AND SEAL MAY BE AFFIXED TO THESE DRAWINGS.

job number:

RDA 19-22

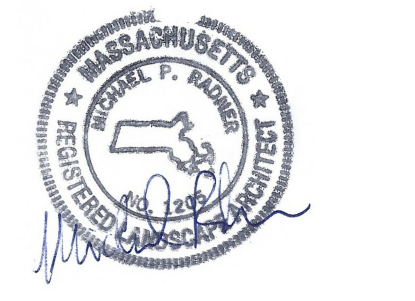
L2.1



Symbol	Qty	Label	Description	Arrangement	Arm	Lum. Lumens	BF	LLD	LLF	Filename
⊙	9	BL1a	99776	SINGLE	0	313	1.000	1.000	0.900	99776.ies
⊕	11	PT1	88263	SINGLE	0	2380	0.760	0.900	0.684	88263.ies
⊕	8	PL3a	99522	SINGLE	0	6855	1.000	1.000	0.900	99522.ies

Label	CalcType	Units	Avg	Max	Min	Avg/Min	Max/Min
CalcPts_1	illuminance	Fc	0.38	6.0	0.0	N.A.	N.A.

LumNo	Label	X	Y	Z	Orient	Tilt
1	PL3a	3956.25	2053.75	22	196.514	0
2	PT1	3902.625	2043.125	12	3.61	0
3	PT1	3833.625	2038.25	12	3.61	0
4	PT1	3856.375	2011.625	12	3.61	0
5	BL1a	3824.125	2010.625	2.5	3.684	0
6	PT1	3715.875	1989.875	12	195.255	0
7	BL1a	3825.875	1986.75	2.5	3.684	0
8	PL3a	3941.5	1971.375	22	117.265	0
9	BL1a	3827.875	1963	2.5	3.684	0
10	BL1a	3830.375	1938.875	2.5	3.684	0
11	PT1	3720.125	1928.875	12	195.255	0
12	PT1	3848.75	1920.125	12	3.61	0
13	BL1a	3832.875	1914.875	2.5	3.684	0
14	PL3a	3904.375	1900.5	22	182.901	0
15	PT1	3726.75	1899.25	12	195.255	0
16	PT1	3854.25	1858.5	12	3.61	0
17	BL1a	3837	1856.375	2.5	3.684	0
18	PL3a	3909.25	1840.25	22	182.901	0
19	BL1a	3839.5	1832.625	2.5	3.684	0
20	PT1	3737	1810.625	12	195.255	0
21	BL1a	3841.625	1808.375	2.5	3.684	0
22	BL1a	3843	1784.875	2.5	186.911	0
23	PL3a	3915.25	1768.375	22	182.901	0
24	PT1	3863.375	1754.375	12	3.61	0
25	PT1	3749.25	1743.125	12	195.255	0
26	PL3a	3775.125	1705.375	22	97.33	0
27	PL3a	3847.25	1694.25	22	97.33	0
28	PL3a	3897	1948.5	22	148.201	0



**architect:**  
**GSD**  
 GSD Associates, LLC.  
 146 MAIN STREET  
 NORTH ANDOVER, MA 01845  
 Tel: 978-688-5422  
 www.gsdassoc.com

**civil engineer:**  
**The Morin-Cameron GROUP, INC.**  
 CIVIL ENGINEERS | ENVIRONMENTAL CONSULTANTS  
 LAND SURVEYORS | LAND USE PLANNERS  
 66 ELM STREET  
 DANVER, MA 01923  
 Tel: 978-777-6586  
 www.morincameron.com

**landscape architect:**  
**Radner Design Associates, Inc.**  
 945 CONCORD STREET  
 SUITE 100  
 FRAMINGHAM, MA 01701  
 Tel: 508-736-6144  
 www.radnerdesign.com

**owner:**  
 THREE BOSTON WAY, LLC  
 231 SUTTON STREET, SUITE 1B  
 North Andover, MA 01845  
 Tel: 978-688-5422

**sheet title:**  
**Photometric Lighting Plan**

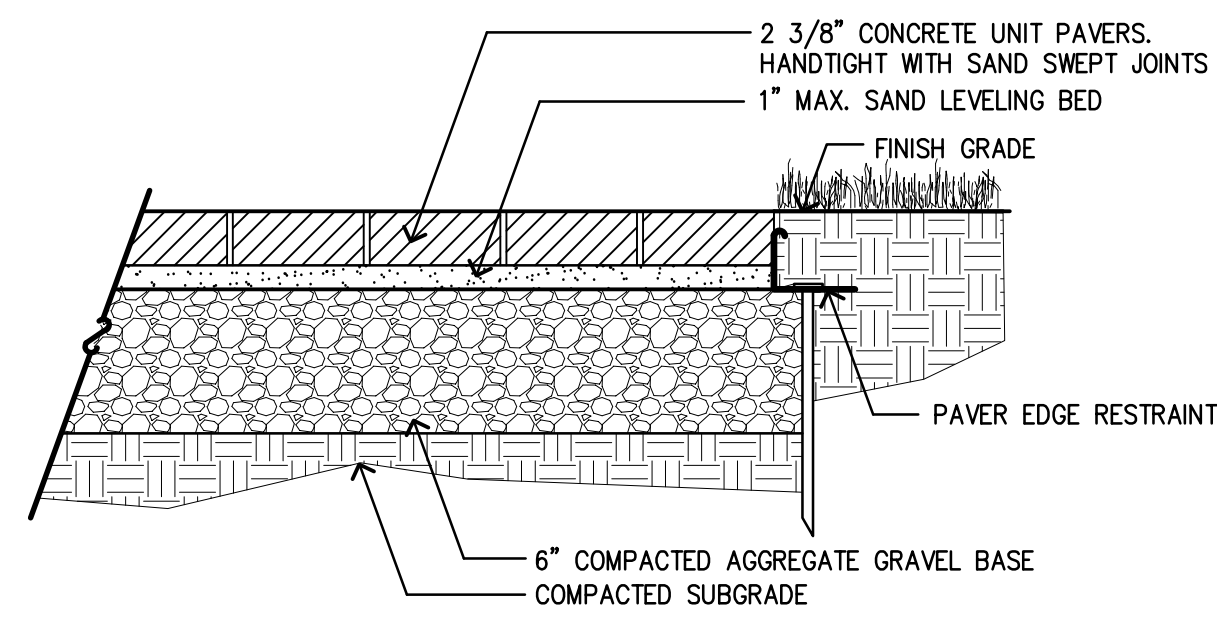
**project name:**  
**3 BOSTON WAY**  
 3 BOSTON WAY  
 NEWBURYPORT, MA

**issue date:** 10/23/19  
**revisions:**  
 Planning Bd Review 12/11/2019  
 Notice of Intent 12/20/2019  
 Planning Bd Review 01/23/2019

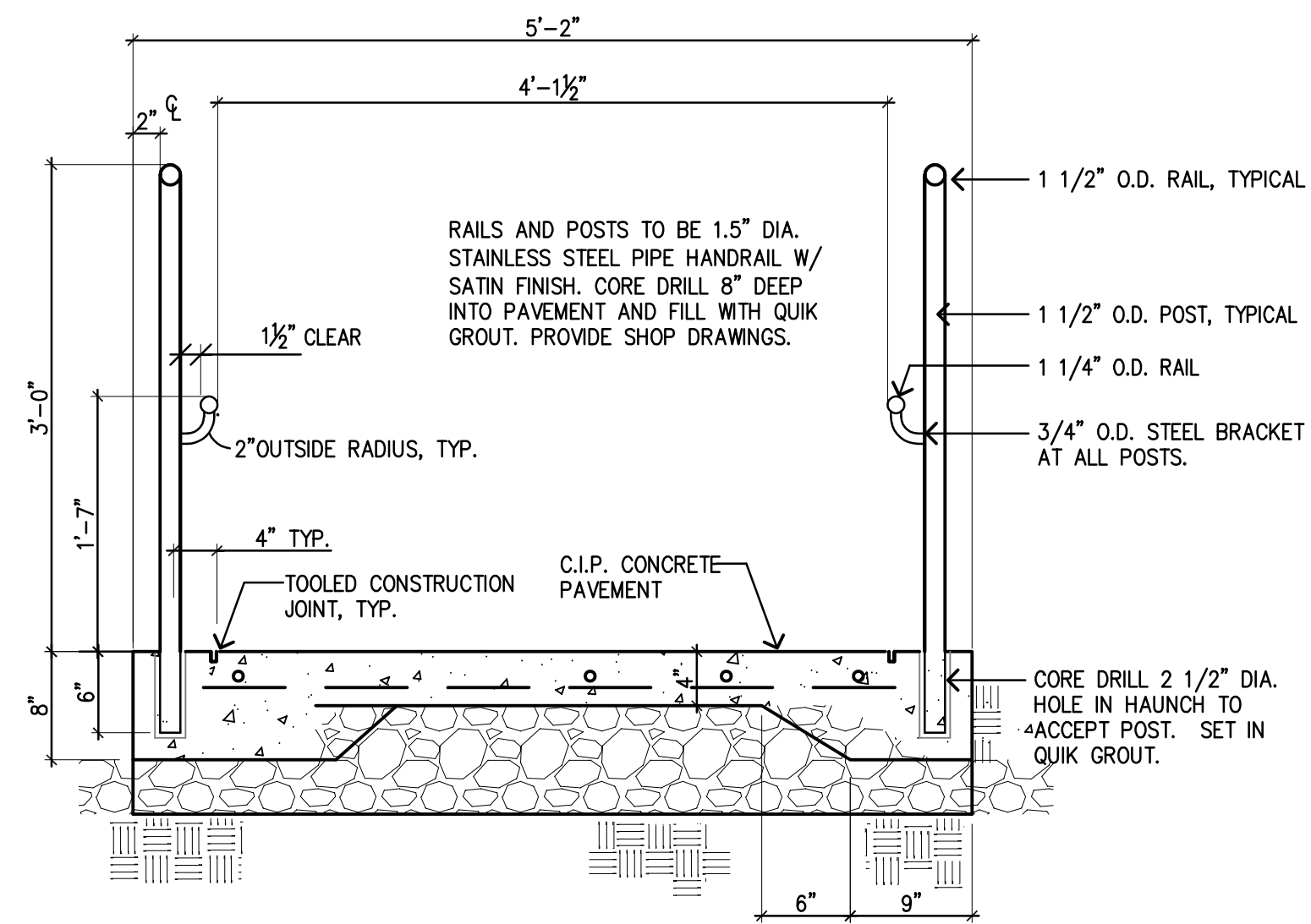
**job number:**  
**RDA 19-22**

**L3.1**

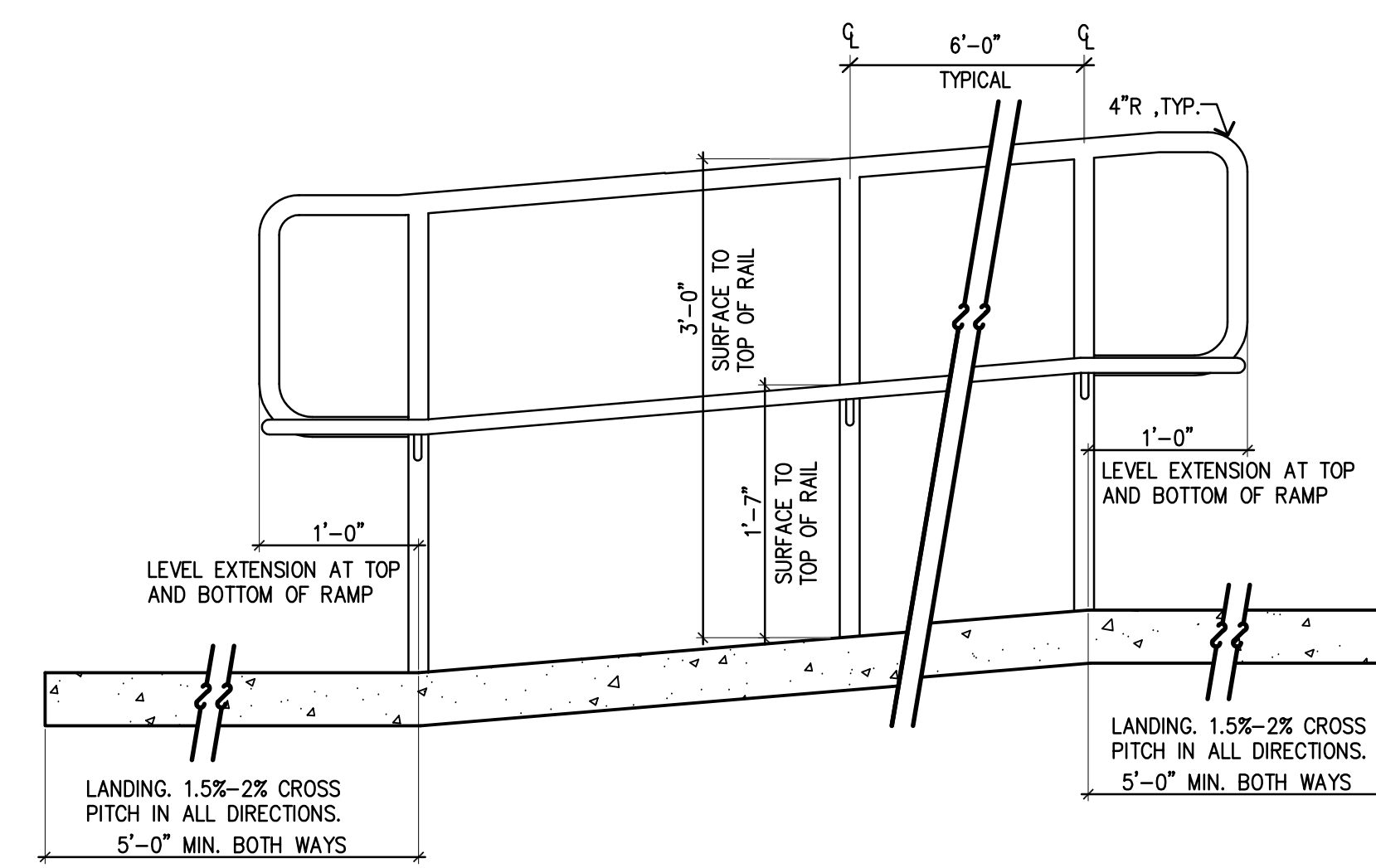
© 2019 Radner Design Associates, Inc. ALL RIGHTS RESERVED. ALL IDEAS, DESIGN, PLANS AND SPECIFICATIONS ARE THE PROPERTY OF RADNER DESIGN ASSOCIATES, INC. REPEAT USE OR CONSTRUCTION OF THIS PROJECT OR THE USE OF ANY INFORMATION CONTAINED HEREIN FOR ANY OTHER PROJECT OR FOR ANY OTHER CONSTRUCTION OR PERMIT APPLICATION IS STRICTLY PROHIBITED WITHOUT WRITTEN PERMISSION OF RADNER DESIGN ASSOCIATES, INC. AND THE LANDSCAPE ARCHITECT WHOSE SIGNATURE AND SEAL MAY BE APPLIED TO THESE DRAWINGS.



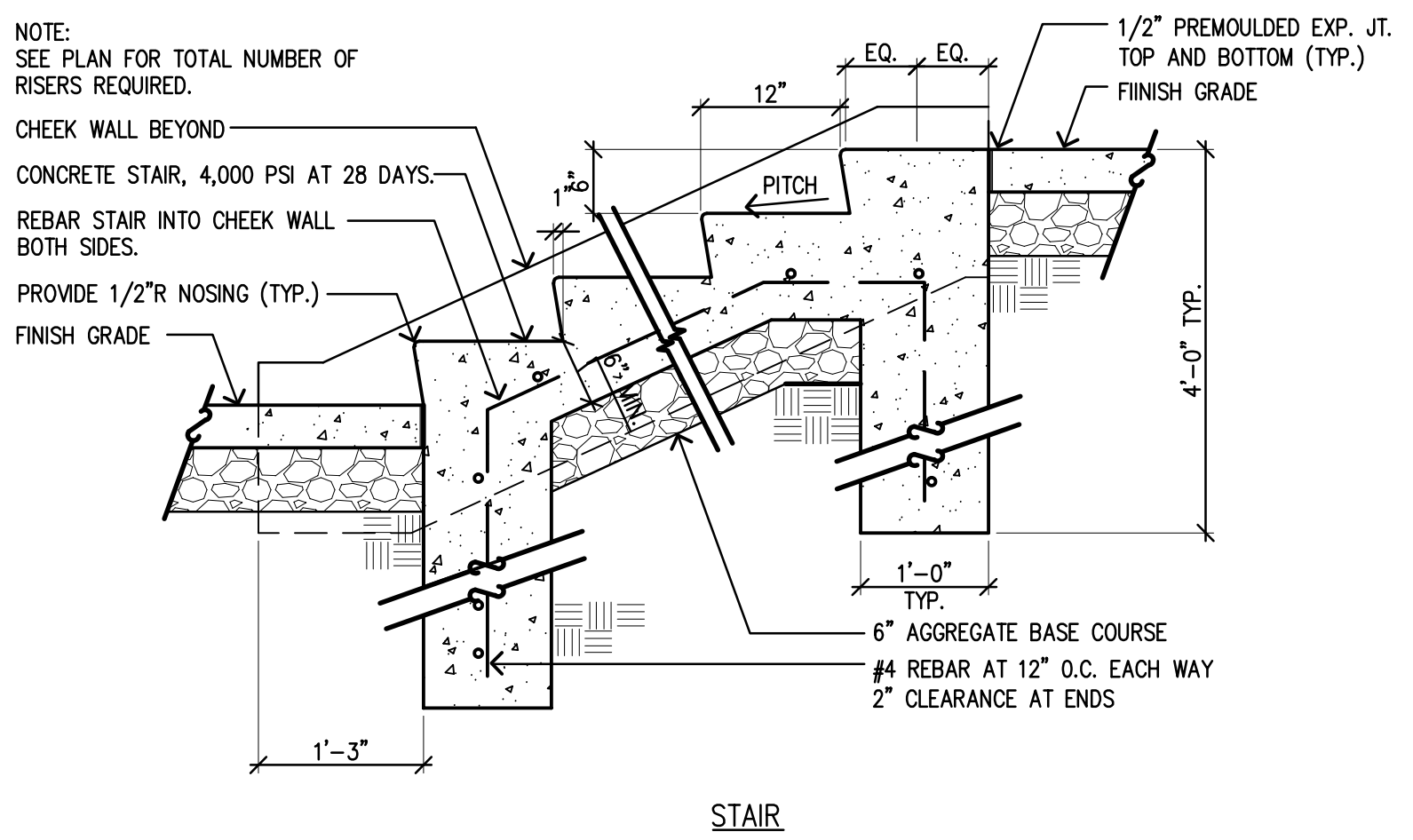
1 UNIT PAVERS  
L4.1 SCALE: 1 1/2"=1'-0"



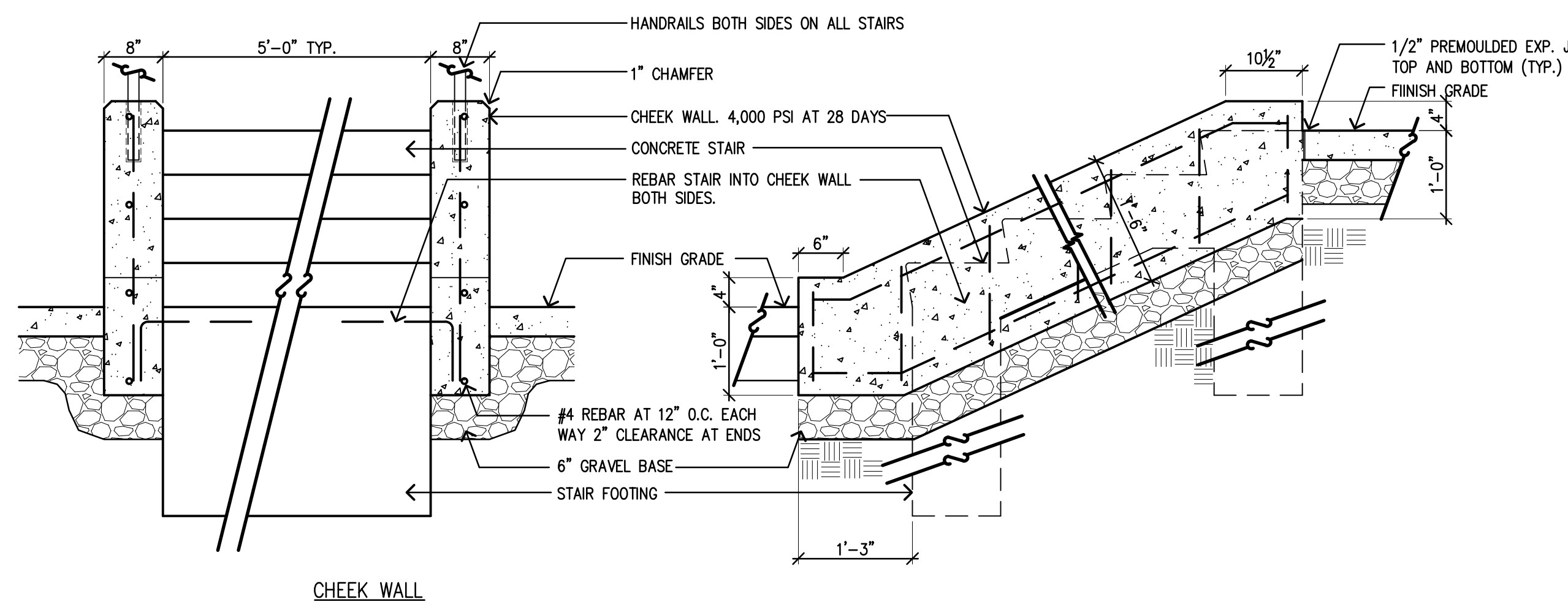
2 RAMP DETAILS  
L4.1 SCALE: 1"=1'-0"



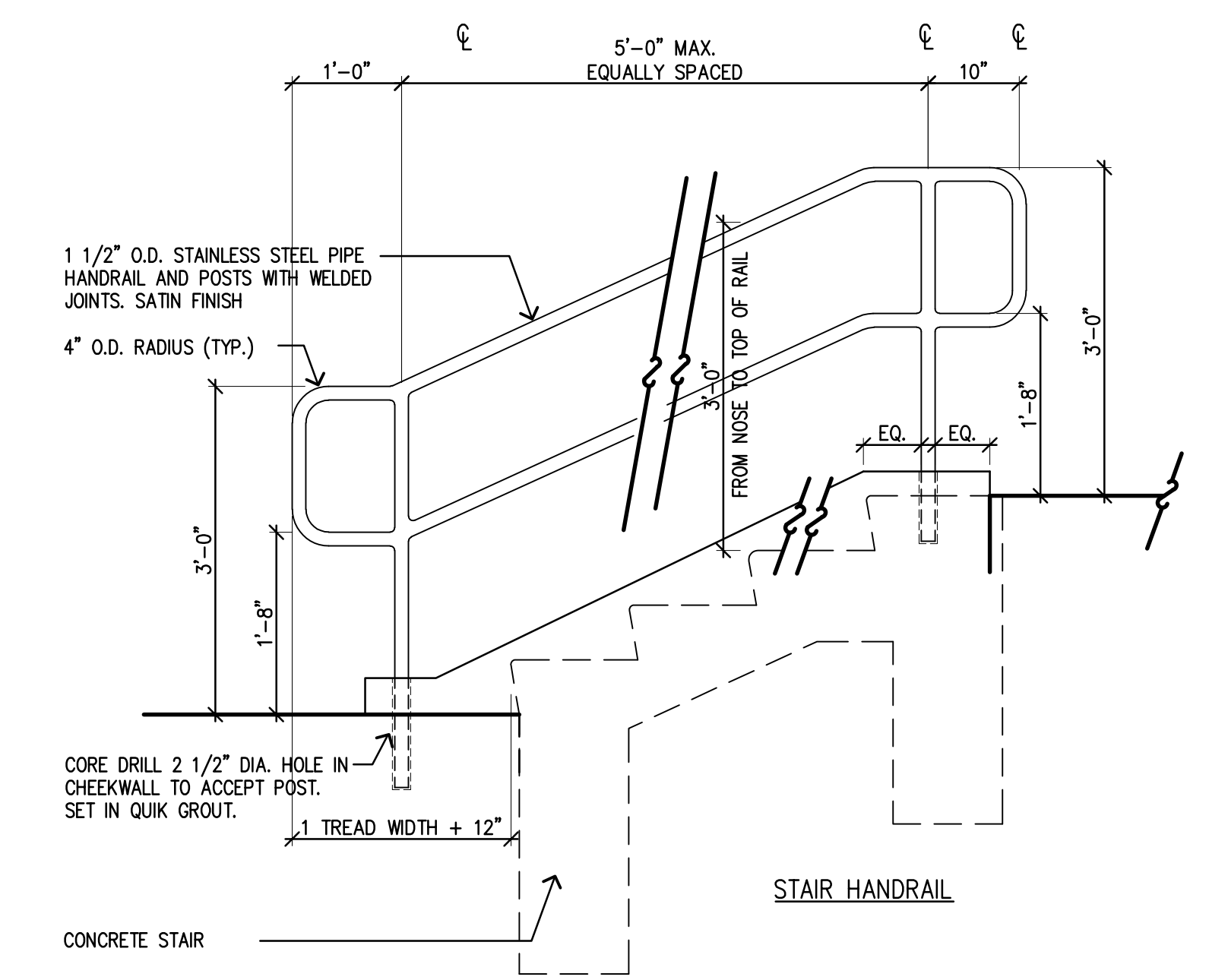
ELEVATION



STAIR



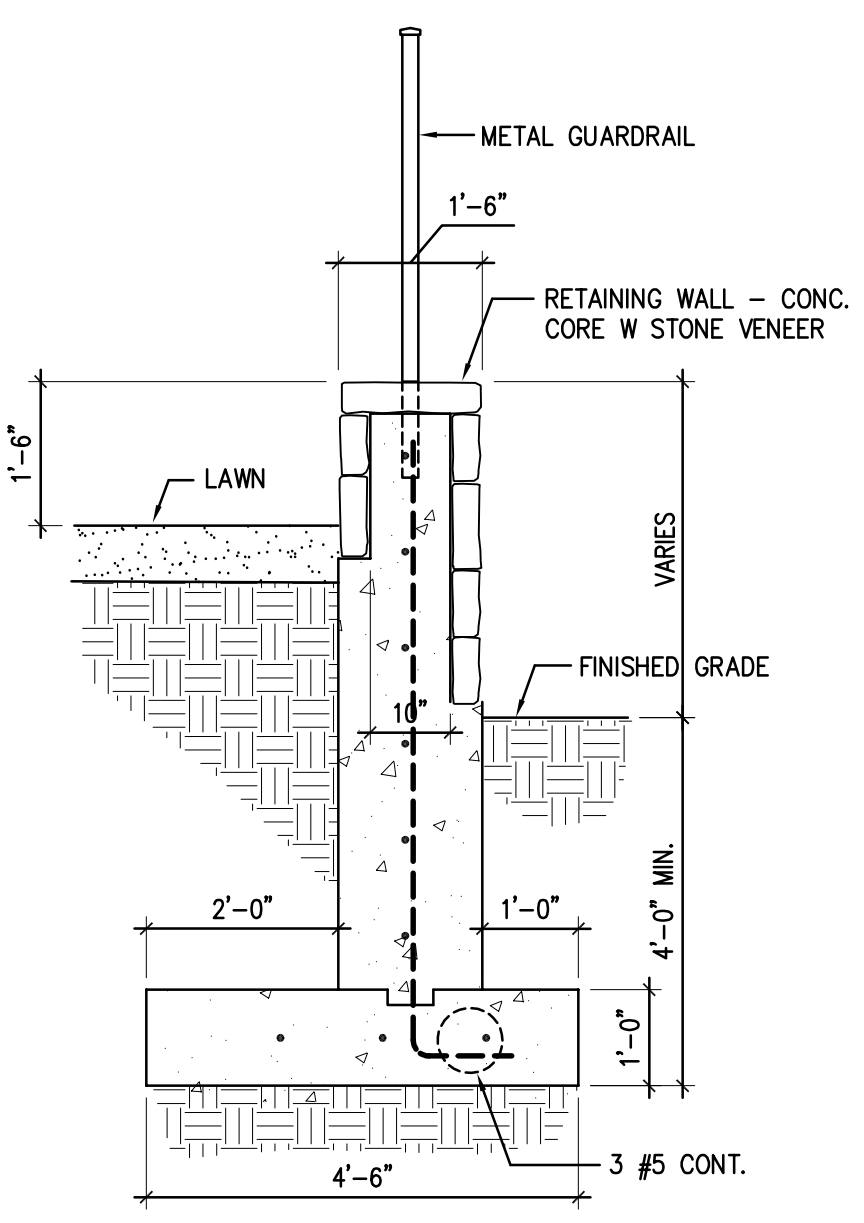
CHEEK WALL



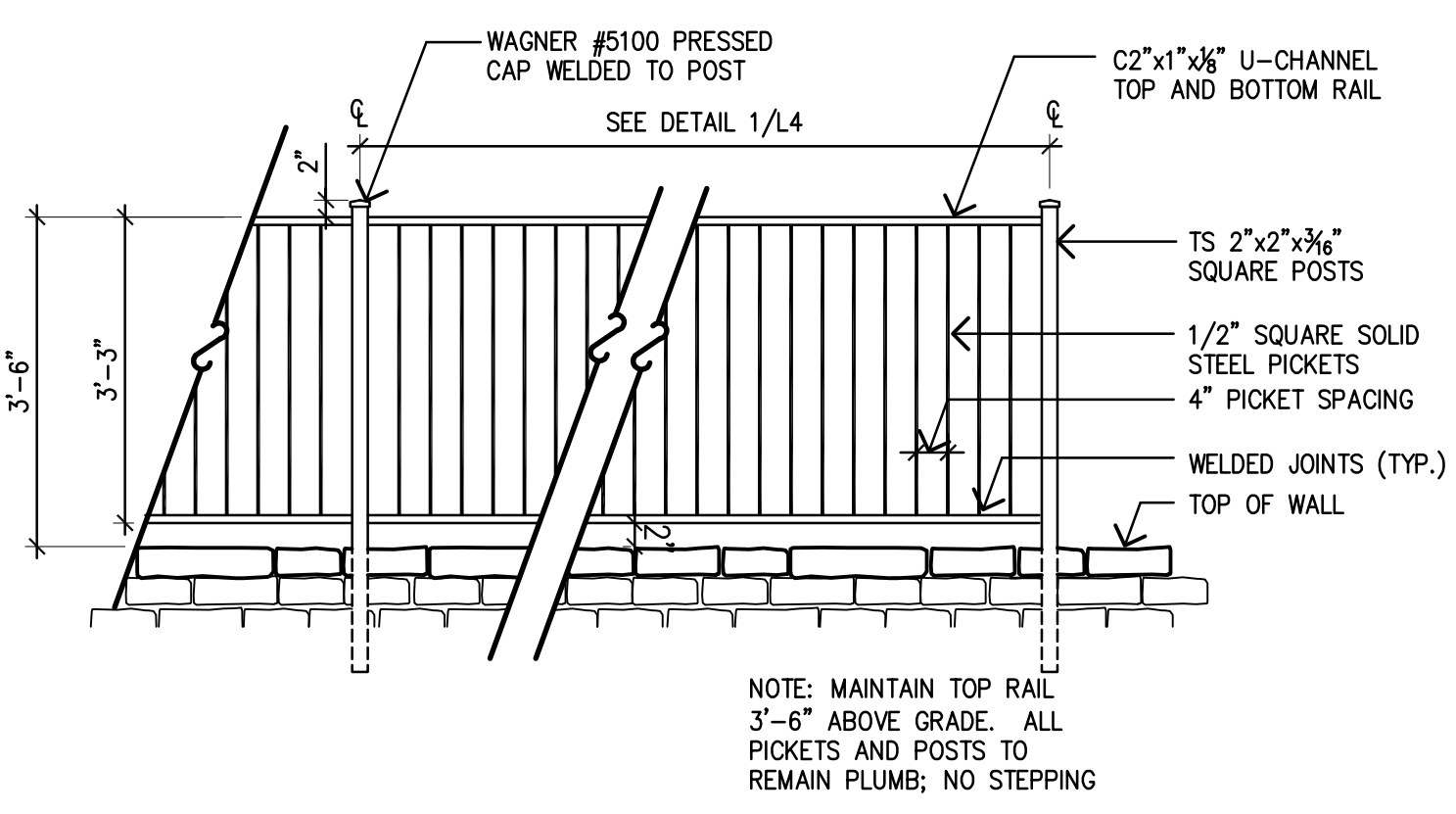
STAIR HANDRAIL

3 STAIR DETAILS  
L4.1 SCALE: 3/4"=1'-0"

4 STAIR HANDRAIL  
L4.1 SCALE: 3/4"=1'-0"



5 RETAINING WALL  
L4.1 SCALE: 1/2"=1'-0"



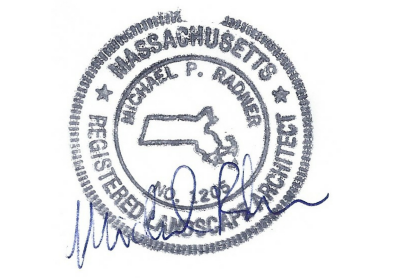
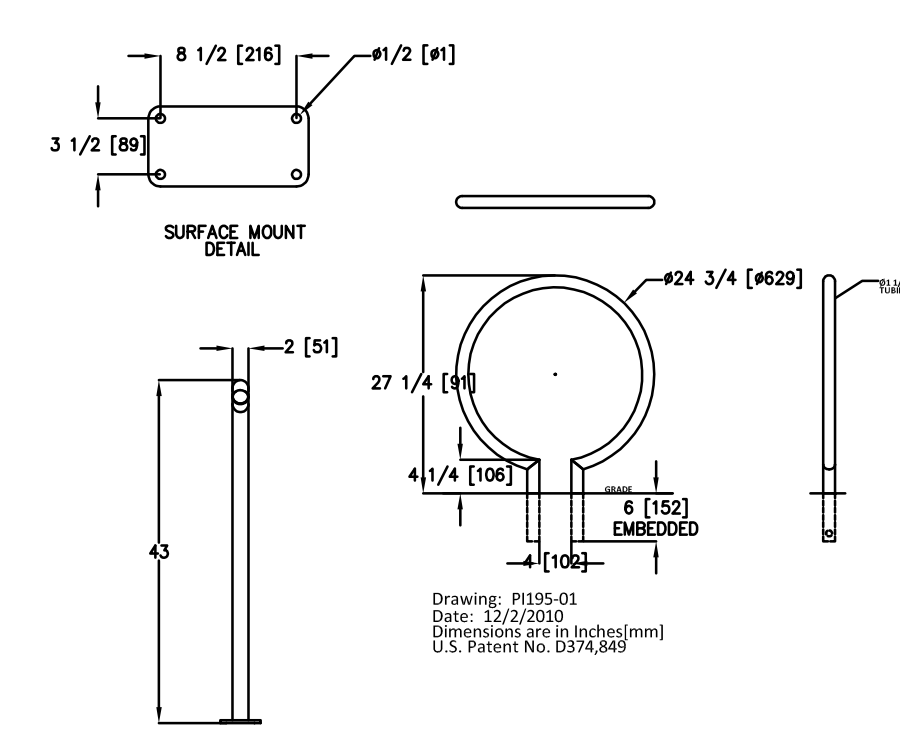
6 METAL GUARDRAIL  
L4.1 SCALE: 1/2"=1'-0"



7 WATER FEATURE  
L4.1 NO SCALE



8 BICYCLE RACK - 'RING RACK' BY LANDSCAPE FORMS  
L4.1 NO SCALE



architect:  
**gso**  
GSD Associates, LLC  
146 MAIN STREET  
NORTH ANDOVER, MA 01845  
Tel: 978-688-5422  
www.gsd-assoc.com

civil engineer:  
**The Morin-Cameron GROUP, INC.**  
CONSULTANTS  
LAND SURVEYORS | LAND USE PLANNERS  
66 ELM STREET  
Danvers, MA 01923  
Tel: 978-777-8986  
www.morincameron.com

landscape architect:  
**Radner Design Associates, Inc.**  
945 CONCORD STREET  
SUITE 100  
Frammingham, MA 01701  
Tel: 508-736-6144  
www.radnerdesign.com

owner:  
**THREE BOSTON WAY, LLC**  
231 SUTTON STREET SUITE 1B  
North Andover, MA 01845  
Tel: 978-688-5422

sheet title:  
**Site Improvement Details 1**

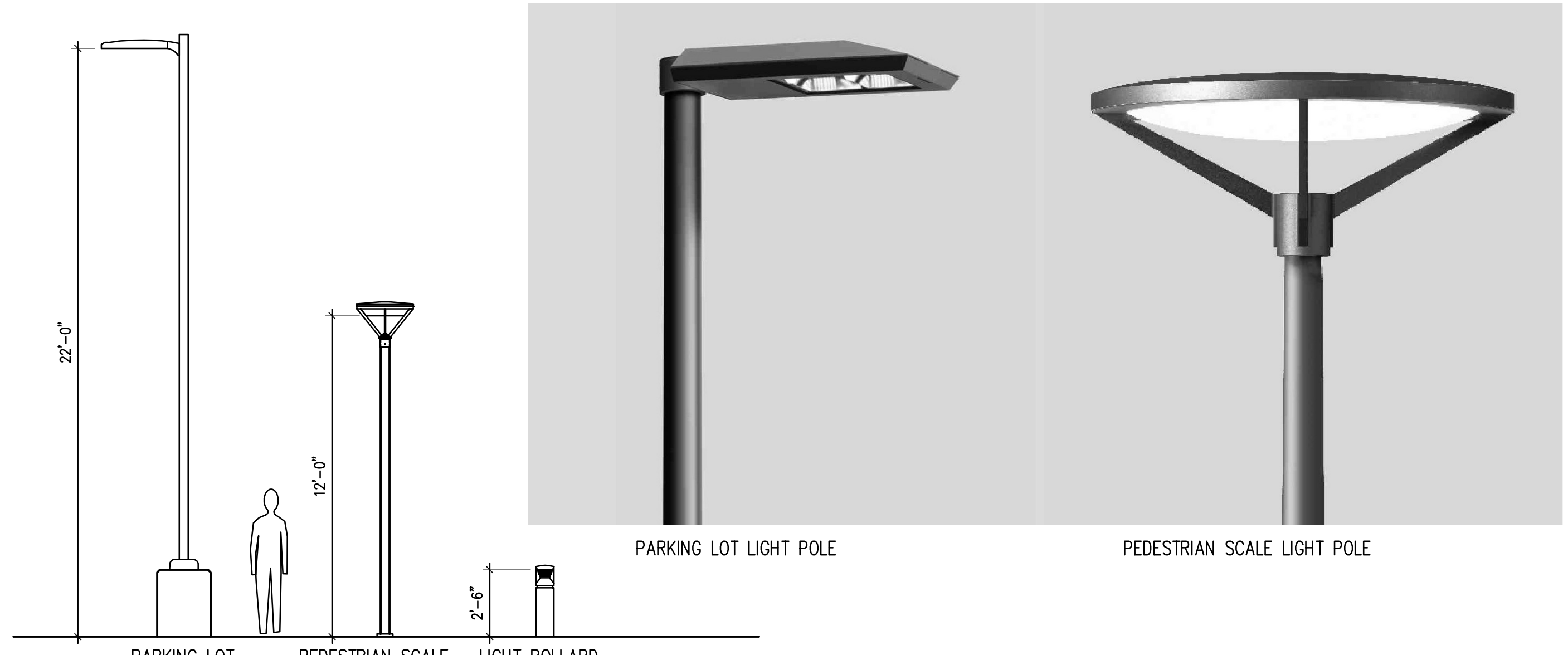
project name:  
**3 BOSTON WAY  
3 BOSTON WAY  
NEWBURYPORT, MA**

issue date: 10/23/19  
revisions:  
Planning Bd Review 12/11/2019  
Notice of Intent 12/20/2019  
Planning Bd Review 01/23/2019

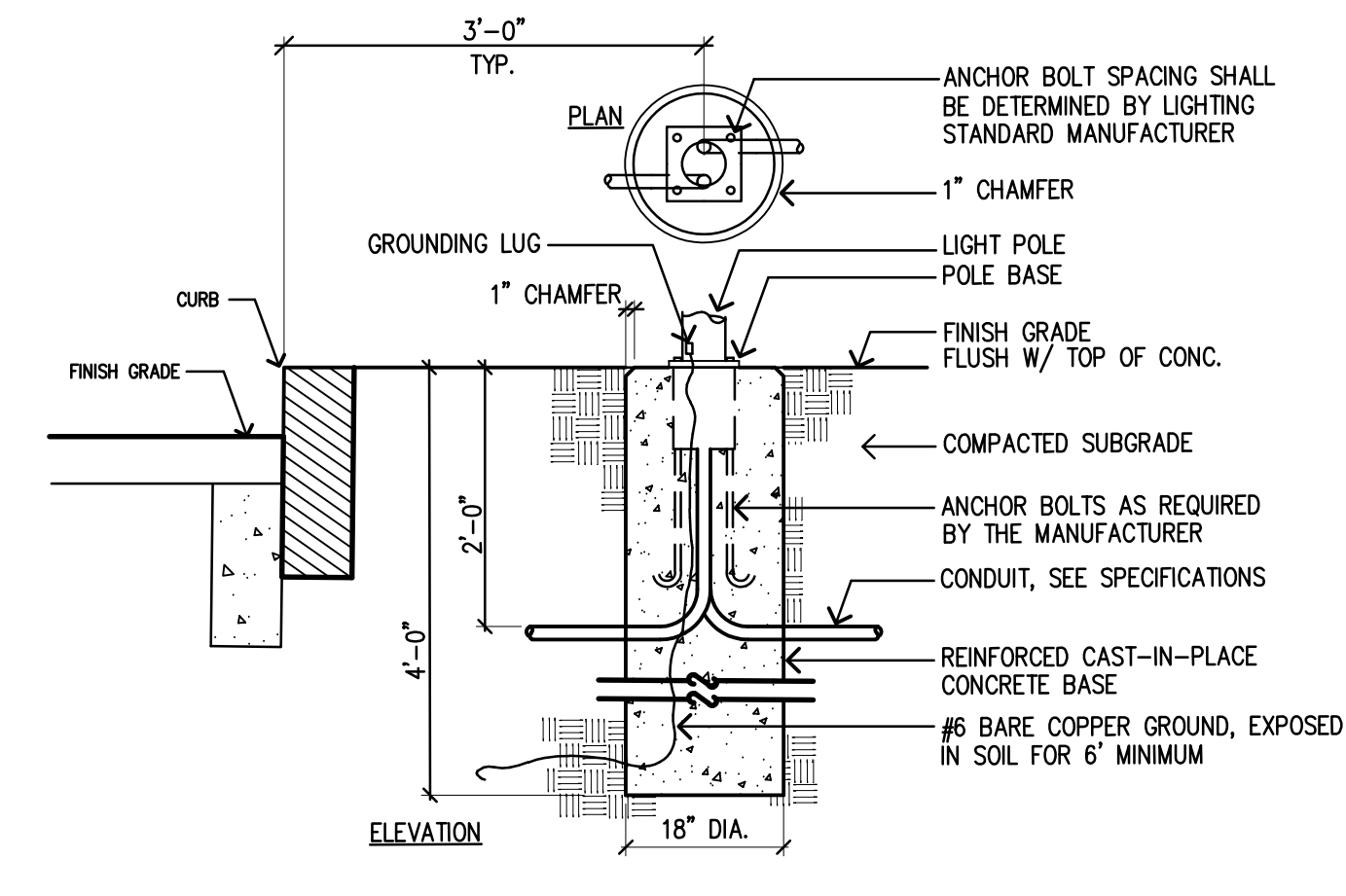
dr. chk.  
© 2019 Radner Design Associates, Inc.  
ALL RIGHTS RESERVED. ALL IDEAS, CONCEPTS, PLANS AND SPECIFICATIONS ARE THE PROPERTY OF RADNER DESIGN ASSOCIATES, INC. REUSE OF ANY PART OF THIS DOCUMENT IS STRICTLY PROHIBITED WITHOUT THE WRITTEN PERMISSION OF RADNER DESIGN ASSOCIATES, INC. AND THE LANDSCAPE ARCHITECT WHOSE SIGNATURE AND SEAL MAY BE AFFIXED TO THESE DRAWINGS.

job number:  
**RDA 19-22**

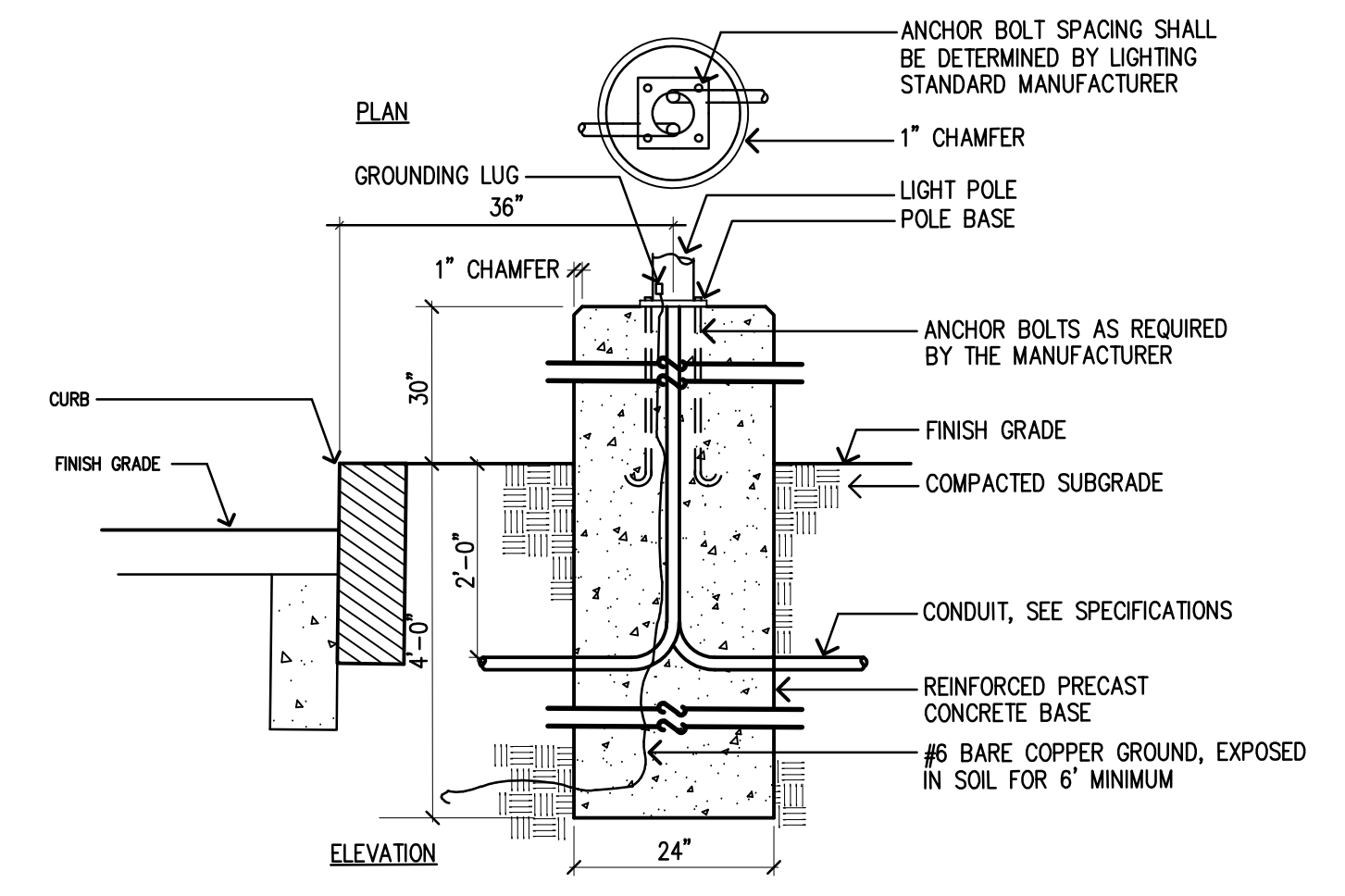
**L4.1**



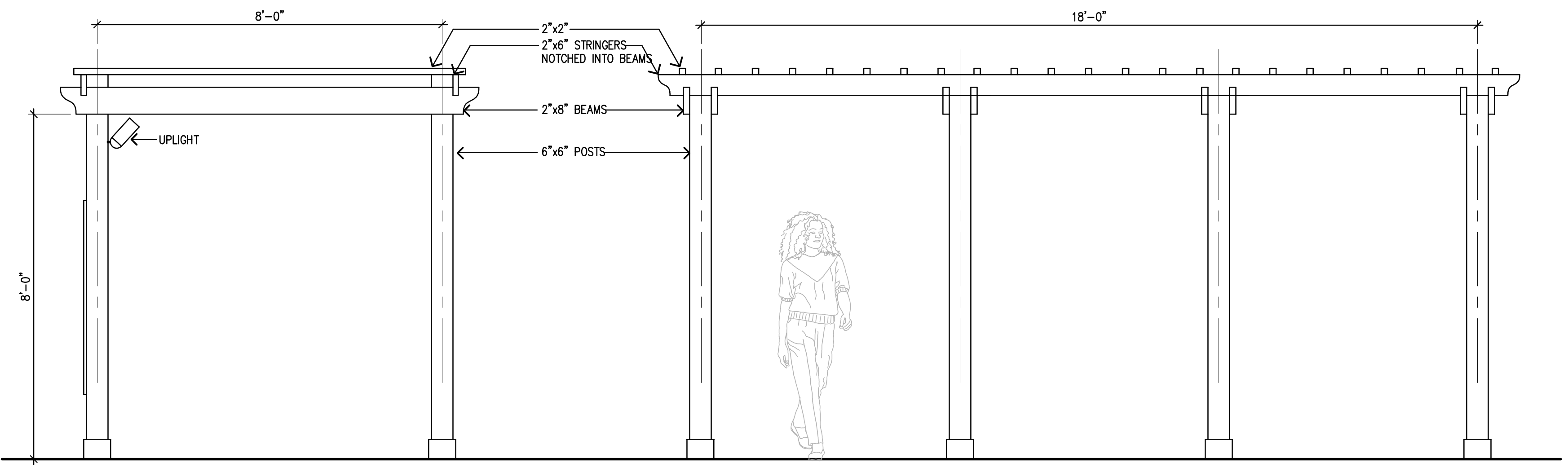
**1 LIGHT POLE ELEVATIONS**  
 SCALE: 1/4"=1'-0"



**2 LIGHT POLE BASE - PEDESTRIAN SCALE POLE**  
 SCALE: 3/4"=1'-0"



**3 LIGHT POLE BASE - PARKING LOT POLE**  
 SCALE: 3/4"=1'-0"

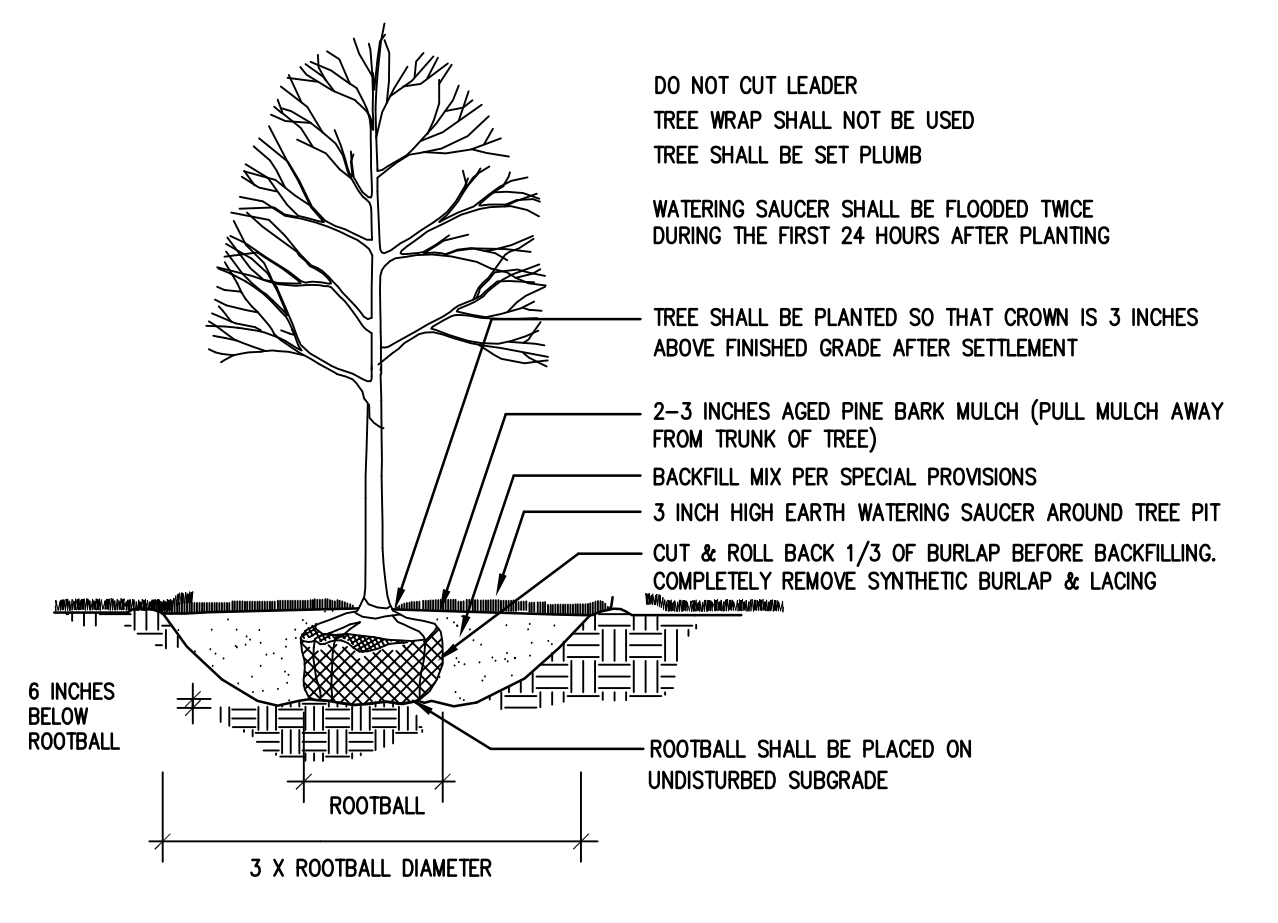


**4 PERGOLA ELEVATION**  
 SCALE: 1/4"=1'-0"

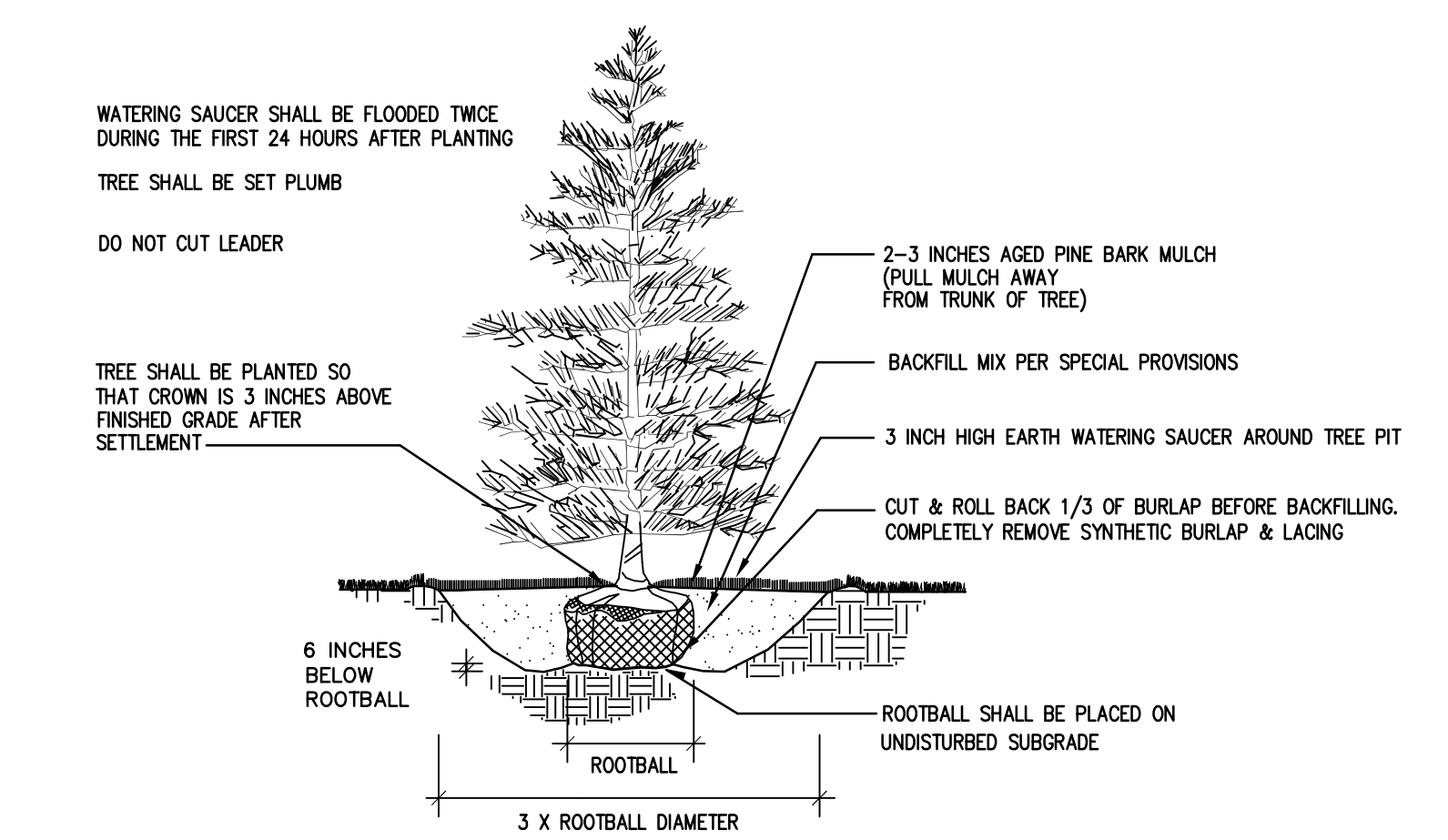


**5 BENCH IMAGE**  
 NO SCALE

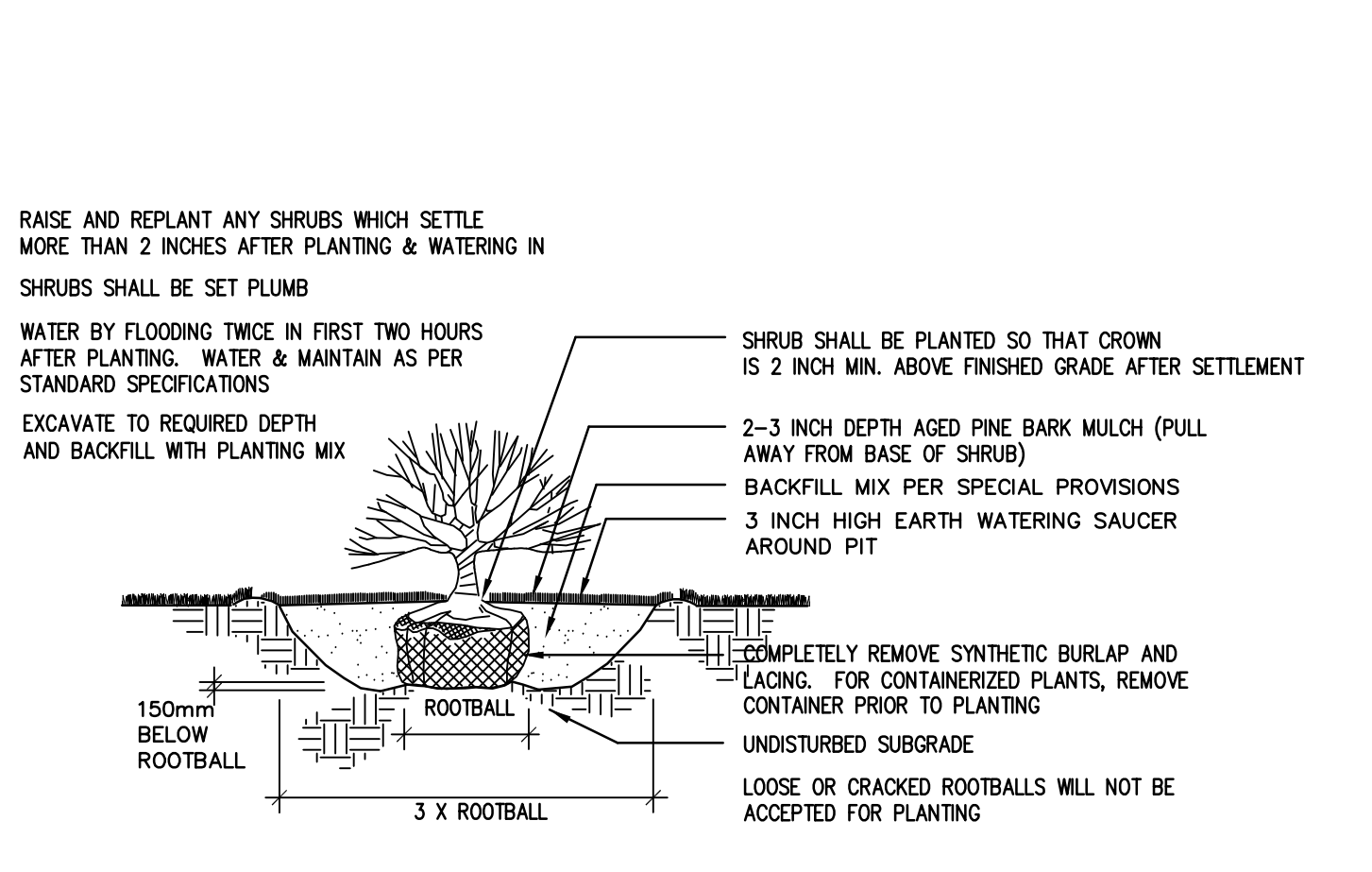
**6 INTENTIONALLY BLANK**  
 NO SCALE



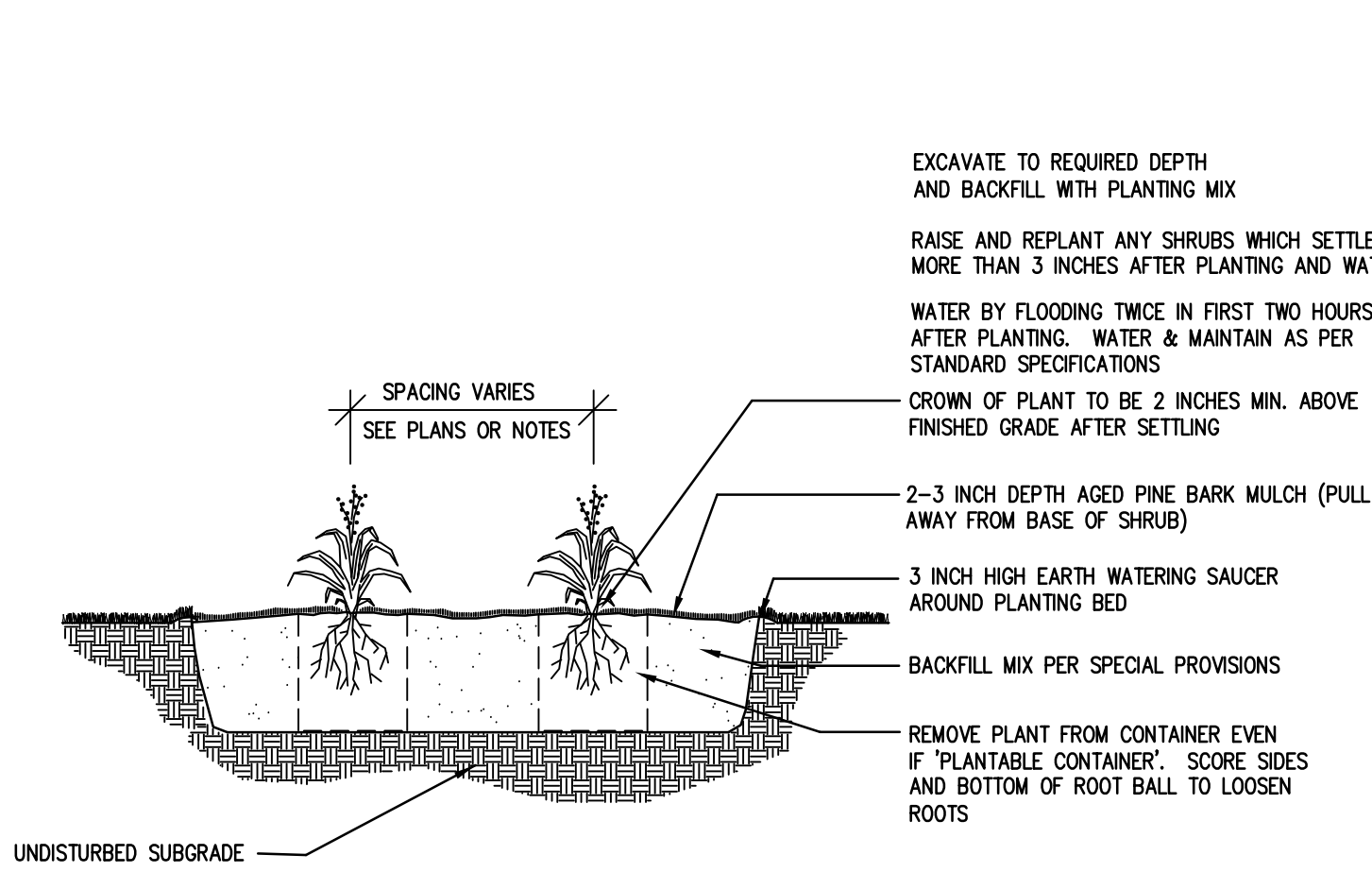
**7 DECIDUOUS TREE PLANTING**  
 NOT TO SCALE



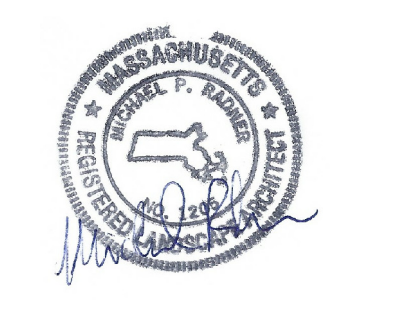
**8 EVERGREEN TREE PLANTING**  
 NOT TO SCALE



**9 SHRUB PLANTING**  
 NOT TO SCALE



**10 PERENNIAL PLANTING**  
 NOT TO SCALE



**architect:**  
**gsd**  
 GSD Associates, LLC  
 146 MAIN STREET  
 NORTH ANDOVER, MA 01845  
 Tel: 978-688-5422  
 www.gsd-assoc.com

**civil engineer:**  
**The Morin-Cameron GROUP, INC.**  
 CIVIL ENGINEERS | ENVIRONMENTAL CONSULTANTS  
 LAND SURVEYORS | LAND USE PLANNERS  
 66 ELM STREET  
 DANVERS, MA 01923  
 Tel: 978-777-8986  
 www.morincameron.com

**landscape architect:**  
**Radner Design Associates, Inc.**  
 945 CONCORD STREET  
 SUITE 100  
 FRAMMINGHAM, MA 01701  
 Tel: 508-736-6144  
 www.radnerdesign.com

**owner:**  
 THREE BOSTON WAY, LLC  
 231 SUTTON STREET, SUITE 1B  
 North Andover, MA 01845  
 Tel: 978-688-5422

**sheet title:**  
**Site Improvement Details 2**

**project name:**  
**3 BOSTON WAY**  
 3 BOSTON WAY  
 NEWBURYPORT, MA

**issue date:** 10/23/19  
**revisions:**  
 Planning Bd Review 12/11/2019  
 Notice of Intent 12/20/2019  
 Planning Bd Review 01/23/2020  
 dr. chk.

© 2019 Radner Design Associates, Inc. ALL RIGHTS RESERVED. ALL DESIGN, PLANS AND SPECIFICATIONS ARE THE PROPERTY OF RADNER DESIGN ASSOCIATES, INC. REUSE OF ANY PART OF THIS DOCUMENT FOR OTHER PROJECTS IS PROHIBITED WITHOUT THE WRITTEN PERMISSION OF RADNER DESIGN ASSOCIATES, INC. AND THE LANDSCAPE ARCHITECT WHOSE SIGNATURE AND SEAL MAY BE AFFIXED TO THESE DRAWINGS.

**job number:**  
**RDA 19-22**

**L4.2**