



May 14, 2020

Newburyport Planning Board  
Attn: Bonnie Sontag  
60 Pleasant Street  
Newburyport, MA 01950

**RE: IFS May 20 – Revised Submission – Engineering  
93 State Street  
Newburyport, Massachusetts**

Dear Members of the Newburyport Planning Board:


This letter is to accompany the site plans for 93 State Street entitled "Permit Site Development Plans" prepared by Meridian Associates, and dated May 20, 2020.

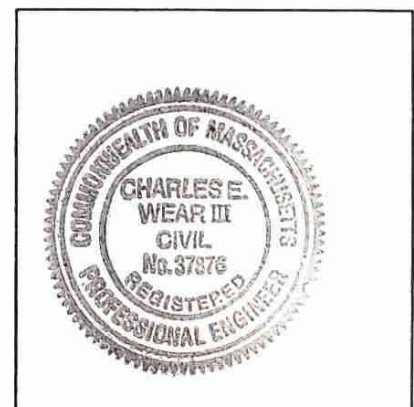
The following plan sheets have been reviewed and approved by Charles E. Wear, III, PE:

- Sheet 1 – Cover Sheet
- Sheet 2 – Record Conditions/Demolition Plan
- Sheet 3 – Site Layout, Grading & Erosion Control Plan
- Sheet 4 – Site Utility Plan
- Sheet 5 – Landscaping Plan
- Sheet 6 – Site Details
- Sheet 7 – Site Details

Sincerely,

**MERIDIAN ASSOCIATES, INC.**

 Date: 5/14/2020  
Charles E. Wear, III, PE  
Director of Engineering



P:\6215\_93 State Street Newburyport\ADMIN\Letters\_Memos\Planning\_2020-05-14.doc



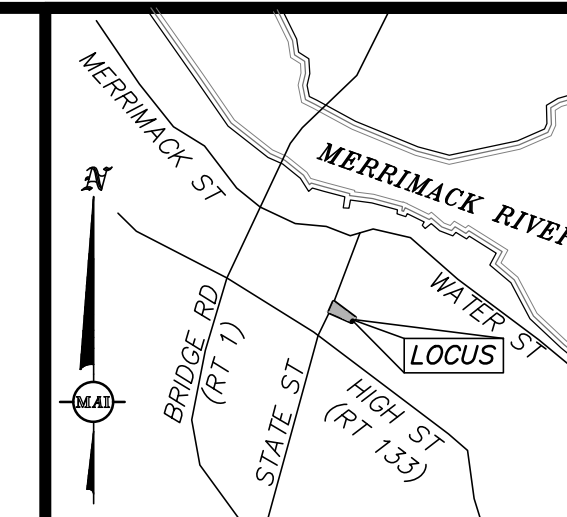




**TEMPORARY BENCHMARK CHART**

T.B.M.#	DESCRIPTION	ELEVATION
▲	X-CUT RIGHT FRONT CAP BOLT HYDRANT, 2.8' A.G.	102.30
▲	TOP OF GRANITE POST, 3.5' A.G.	107.26

(SEE NOTE 6)



**LOCUS MAP**  
(NOT TO SCALE)

**EXISTING LEGEND:**

- 101 ONE FOOT CONTOUR
- 100 FIVE FOOT CONTOUR
- GRANITE CURB
- IRON FENCE
- WOOD FENCE
- RETAINING WALL
- BRICK
- CONCRETE
- ASPHALT PARKING AREA TO BE REMOVED
- SIGN
- HANDICAP RAMP
- BOLLARD
- BENCH
- DECIDUOUS TREE
- CONIFEROUS TREE
- COMPILED GAS LINE
- GAS GATE
- GAS METER
- COMMUNICATIONS LINE
- UNDERGROUND CABLE PAINT MARKING
- TELEPHONE MANHOLE
- OVERHEAD WIRES
- COMPILED ELECTRIC LINE
- LIGHT POLE
- ELECTRIC MANHOLE
- UTILITY POLE
- UTILITY POLE WITH LIGHT
- GUY WIRE
- ELECTRIC HANDHOLE
- AIR CONDITIONER
- DRAIN LINE
- COMPILED DRAIN LINE
- DRAIN MANHOLE
- COMPILED DRAIN MANHOLE
- CATCH BASIN
- COMPILED CATCH BASIN
- AREA DRAIN/ROUND CATCH BASIN
- D-SHAPE CATCH BASIN
- DOUBLE CATCH BASIN
- CLEANOUT
- WATER LINE
- COMPILED WATER LINE
- UNDERGROUND WATER PAINT MARKING
- WATER GATE
- COMPILED WATER GATE
- HYDRANT
- WATER SERVICE
- IRRIGATION CONTROL VALVE
- N.P.V.
- WATER@96.8
- SEWER LINE
- COMPILED SEWER LINE
- SEWER MANHOLE
- COMPILED SEWER MANHOLE
- TERMINUS UNKNOWN
- ABOVE GROUND
- BITUMINOUS CONCRETE
- CAST IRON
- CONCRETE
- CORRUGATED STEEL
- FINISHED FIRST FLOOR
- GEN
- GENERATOR
- GC
- GRANITE CURB
- INVERT
- A.G.
- BIT. CONC.
- CI
- CONC.
- CS
- CORRUGATED STEEL
- FF
- FINISHED FIRST FLOOR
- GEN
- GENERATOR
- GC
- GRANITE CURB
- i/a/b
- INVERT
- PVC
- POLYVINYL CHLORIDE
- RWS
- STONE RETAINING WALL
- (TBR)
- TO BE REMOVED

**RECORD CONDITIONS & DEMO PLAN**  
 LOCATED IN  
**NEWBURYPORT, MASSACHUSETTS**  
 (ESSEX COUNTY)  
 PREPARED FOR  
**INSTITUTION FOR SAVINGS**

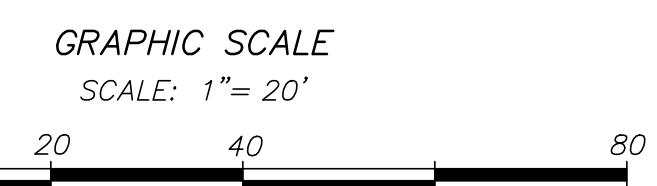
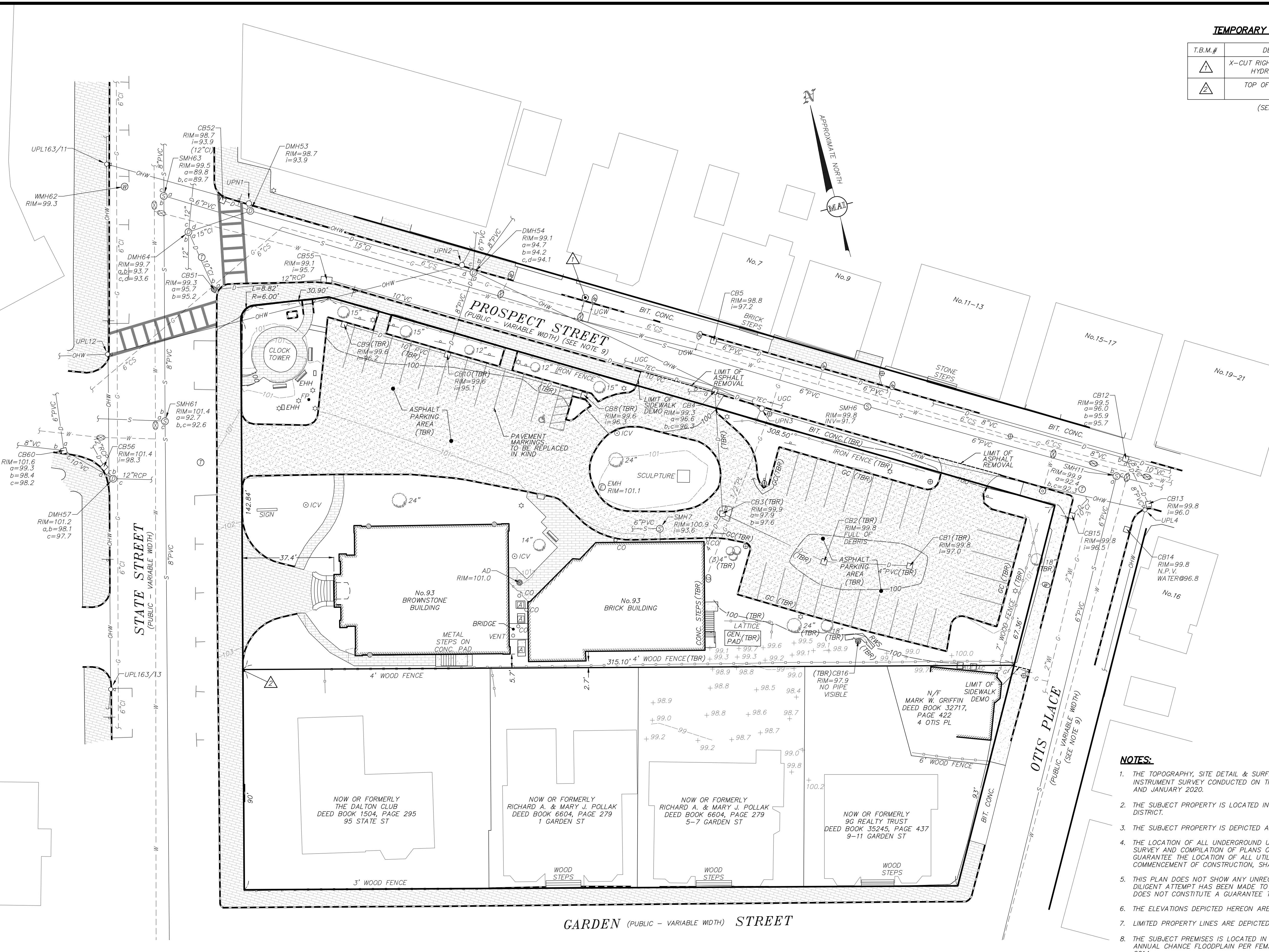
**MERIDIAN ASSOCIATES**  
 500 CUMMINGS CENTER, SUITE 5950  
 BEVERLY, MASSACHUSETTS 01915  
 TELEPHONE: (978) 299-4447  
 WWW.MERIDIANASSOC.COM



DATE: JANUARY 8, 2020  
 SCALE: 1"=20'  
 SHEET No. 2 OF 7  
 PROJECT No. 6215

**NOTES:**

- THE TOPOGRAPHY, SITE DETAIL & SURFACE IMPROVEMENTS DEPICTED HEREON WERE OBTAINED FROM AN INSTRUMENT SURVEY CONDUCTED ON THE GROUND BY MERIDIAN ASSOCIATES, INC. (MAI) IN APRIL AND JULY 2019, AND JANUARY 2020.
- THE SUBJECT PROPERTY IS LOCATED IN THE DOWNTOWN BUSINESS DISTRICT (B2) AND THE DOWNTOWN OVERLAY DISTRICT.
- THE SUBJECT PROPERTY IS DEPICTED AS LOTS 39 & 40 ON CITY OF NEWBURYPORT ASSESSOR'S MAP 14.
- THE LOCATION OF ALL UNDERGROUND UTILITIES SHOWN ARE APPROXIMATE AND ARE BASED UPON A PARTIAL FIELD SURVEY AND COMPILATION OF PLANS OF RECORD. MERIDIAN ASSOCIATES, INC. DOES NOT WARRANT ANY GUARANTEE THE LOCATION OF ALL UTILITIES DEPICTED OR NOT DEPICTED. THE CONTRACTOR, PRIOR TO COMMENCEMENT OF CONSTRUCTION, SHALL VERIFY THE LOCATION OF ALL UTILITIES AND CONTACT DIG SAFE AT 811.
- THIS PLAN DOES NOT SHOW ANY UNRECORDED OR UNWRITTEN EASEMENTS WHICH MAY EXIST. A REASONABLE AND DILIGENT ATTEMPT HAS BEEN MADE TO OBSERVE ANY APPARENT, VISIBLE USES OF THE LAND; HOWEVER, THIS DOES NOT CONSTITUTE A GUARANTEE THAT NO SUCH EASEMENTS EXIST.
- THE ELEVATIONS DEPICTED HEREON ARE BASED ON AN ASSUMED DATUM.
- LIMITED PROPERTY LINES ARE DEPICTED HEREON.
- THE SUBJECT PREMISES IS LOCATED IN FLOOD ZONE X (UNSHADED), AREAS DETERMINED TO BE OUTSIDE THE 0.2% ANNUAL CHANCE FLOODPLAIN PER FEMA FLOOD INSURANCE RATE MAP NUMBER 25009C01366 DATED JULY 16, 2014.
- THE RIGHT OF WAY LINES FOR OTIS AND PROSPECT STREET WERE BASED UPON EVIDENCE OF OCCUPATION. MAI WAS UNABLE TO FIND RECORD STREET LAYOUTS FOR EITHER STREET. THE CITY OF NEWBURYPORT HAS NOT BEEN ABLE TO FIND ANY RECORDS OF TAKINGS OR LAYOUT PLANS TO ACCOUNT FOR THE CURRENT ROADWAY AND SIDEWALK FOOTPRINT. THE PLANS OF RECORD FOR THE SUBJECT PROPERTY COULD NOT BE PUT ON THE GROUND. THE FRONTAGE ALONG STATE STREET INDICATES THAT THE OWNERSHIP EXTENDS INTO THE APPARENT RIGHT OF WAY OF PRESENT DAY PROSPECT STREET, AS CONSTRUCTED, BASED ON LINES OF OCCUPATION.



**RECORD OWNER:**  
 INSTITUTION FOR SAVINGS IN  
 NEWBURYPORT AND ITS VICINITY  
 93 STATE STREET  
 NEWBURYPORT, MASSACHUSETTS 01950

**REFERENCES:**

- PLAN BOOK 35, PLAN 13
- PLAN IN RECORD BOOK 2526, PAGE 1
- PLAN 292 OF 1945
- PLAN 704 OF 1955

DOCUMENTS ON RECORD AT THE ESSEX  
 SOUTH COUNTY REGISTRY OF DEEDS

- DEED BOOK 764, PAGE 51
- DEED BOOK 1851, PAGE 347
- DEED BOOK 1889, PAGE 219
- DEED BOOK 3423, PAGE 564
- DEED BOOK 5448, PAGE 338
- DEED BOOK 6788, PAGE 210



**SCHEDULE OF DIMENSIONAL CONTROLS**

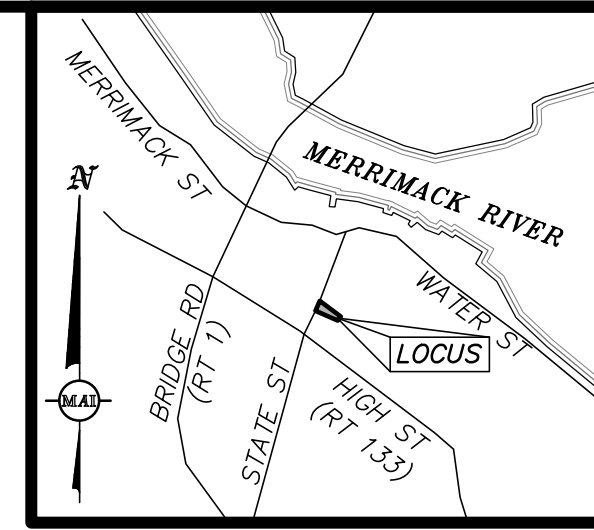
ZONING DISTRICT: 404 B-2 (DOWNTOWN OVERLAY DISTRICT)

REQUIREMENT	REQUIRED	EXISTING	PROPOSED ADDITION
LOT AREA:	5,000 S.F.	36,998±S.F.	36,998±S.F.
FRONTAGE:	60 FT.	491.06± FT.	491.06± FT.
LOT WIDTH:	N/A	VARIES	VARIES
FRONT YARD:	0 FT.	37.4± FT.	0.7± FT.
SIDE YARD:	0 FT.	2.7± FT.	11.2± FT.
REAR YARD:	0 FT.	4.5± FT.	5.5± FT.
BUILDING LOT COVERAGE:	100%	18%	39%

**TEMPORARY BENCHMARK CHART**

T.B.M.#	DESCRIPTION	ELEVATION
△	X-CUT RIGHT FRONT CAP BOLT HYDRANT, 2.8' A.G.	102.30
△	TOP OF GRANITE POST	107.26

(SEE NOTE 6 SHEET 2)



**LOCUS MAP**  
(NOT TO SCALE)

**EROSION CONTROL LEGEND**

- PROPOSED FILTERMITT
- PROPOSED SILTSAC CATCHBASIN INLET PROTECTION

**EROSION CONTROL NOTES:**

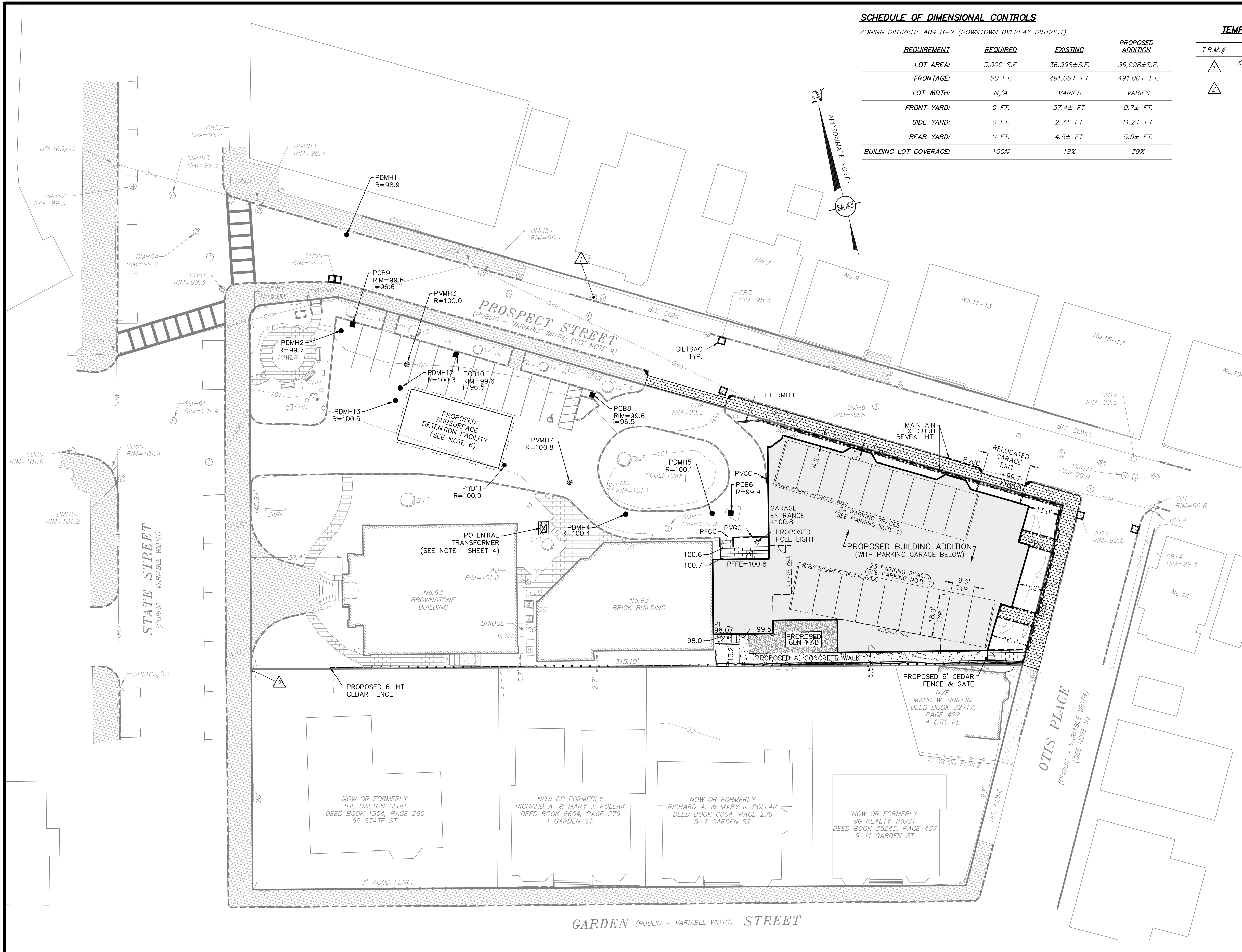
- ALL EXISTING STRUCTURES WITHIN THE LIMIT OF WORK TO BE REMOVED SHALL BY PROTECTED AND MAINTAINED UNTIL TIME OF REMOVAL/REPLACEMENT.
- EROSION CONTROL DEVICES SHALL BE CHECKED WEEKLY TO ENSURE PROPER FUNCTION.
- LOCATION OF TEMPORARY CONSTRUCTION ENTRANCE TO BE DETERMINED PRIOR TO THE START OF CONSTRUCTION ACTIVITIES.

**PROPOSED LEGEND**

- +99.70 PROPOSED SPOT ELEVATION
- PROPOSED VERTICAL GRANITE CURB
- PROPOSED FLUSH GRANITE CURB
- PROPOSED WOODEN FENCE
- PROPOSED CONCRETE WALK
- PROPOSED CRUSHED STONE
- PROPOSED SUBSURFACE DETENTION FACILITY
- PROPOSED BRICK SIDEWALK
- ☆ PROPOSED DECORATIVE POLE LIGHT
- ⊙ PROPOSED RECESSED LIGHT
- PDMH PROPOSED DRAIN MANHOLE
- ⊙ PVCB PROPOSED VORTECH CATCHBASIN
- PCB PROPOSED CATCHBASIN
- PVGC PROPOSED VERTICAL GRANITE CURB
- PFGC PROPOSED FLUSH GRANITE CURB

**PARKING NOTES:**

- TOTAL NUMBER OF PARKING SPACES BASED ON USE OF CITY LIFT 2600X6750 SUBTERRANEAN PARKING SYSTEM.



GARDEN (PUBLIC - VARIABLE WIDTH) STREET

OTIS PLACE  
(PUBLIC - VARIABLE WIDTH)  
(SEE NOTE 9)

GRAPHIC SCALE  
SCALE: 1" = 20'



FOR PERMITTING ONLY  
NOT FOR CONSTRUCTION

**REVISIONS**

NO.	DATE	DESCRIPTION
05/20/20	NEB	REVISED SUBMISSION
03/25/20	NEB	BUILDING/PARKING REDESIGN
02/06/20	NEB	PEER REVIEW COMMENTS 01/20/20

**93 STATE STREET  
SITE LAYOUT, GRADING & EROSION  
CONTROL PLAN**  
LOCATED IN  
**NEWBURYPORT, MASSACHUSETTS  
(ESSEX COUNTY)**  
PREPARED FOR  
**INSTITUTION FOR SAVINGS**

**MERIDIANS ASSOCIATES**  
500 CUMMINGS CENTER, SUITE 5950  
BEVERLY, MASSACHUSETTS 01915  
TELEPHONE: (978) 299-0447  
WWW.MERIDIANSASSOC.COM

69 MILK STREET, SUITE 302  
WESTBOROUGH, MASSACHUSETTS 01581  
TELEPHONE: (508) 871-7030

CHECKED BY: CEW

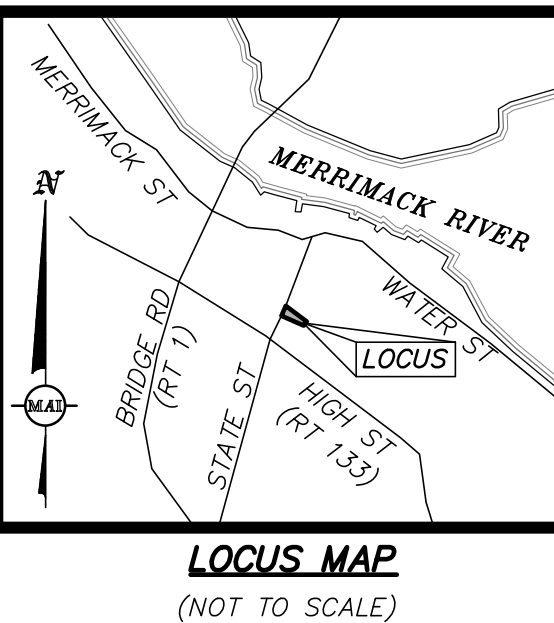
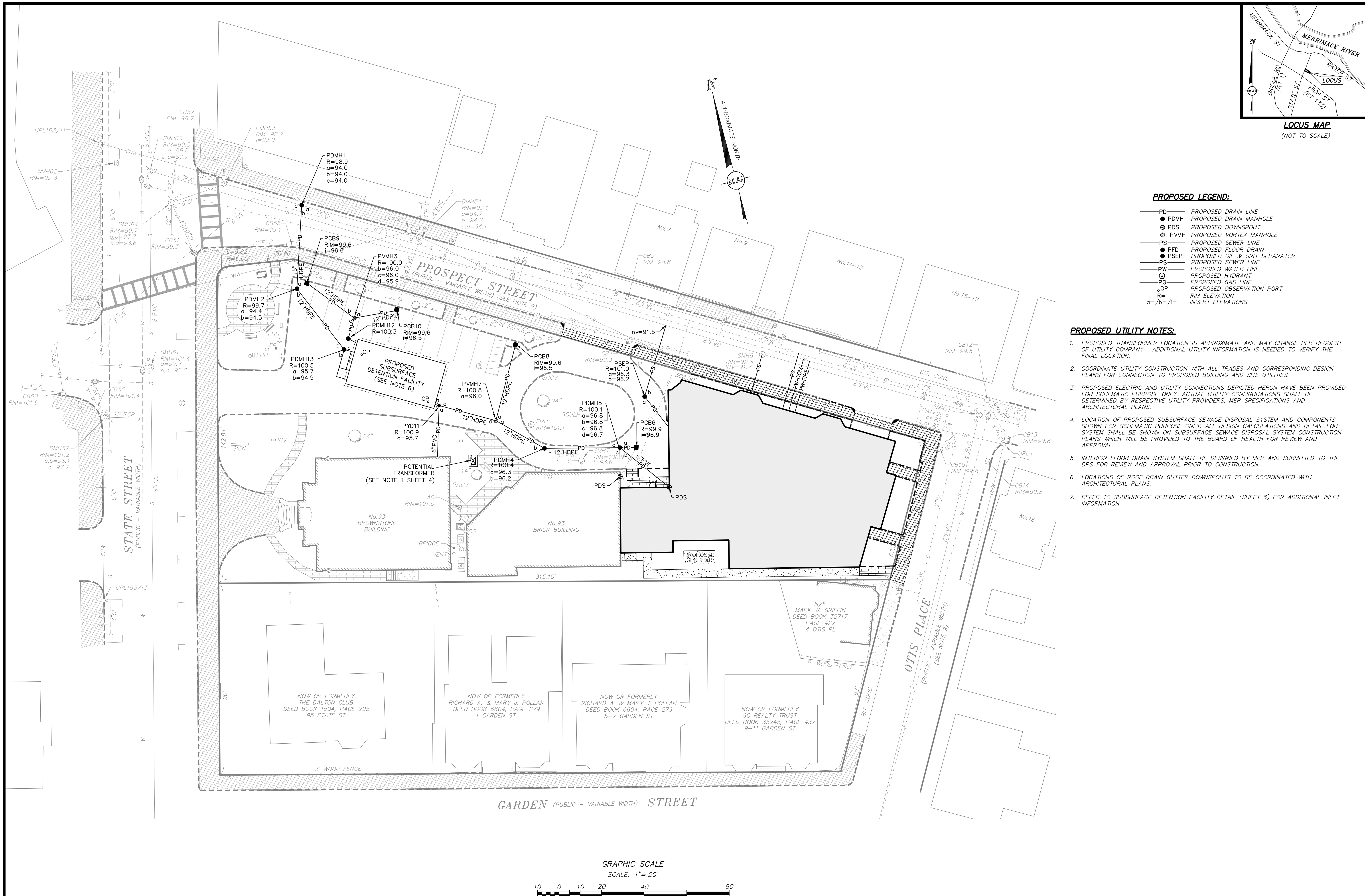
DATE:  
JANUARY 8, 2020

SCALE:  
1"=20'

SHEET No.  
**3 of 7**

PROJECT No.  
**6215**

(XREF: 6215-REC)  
DWG. No. 6215\_SITE.DWG



**PROPOSED LEGEND:**

- PD — PROPOSED DRAIN LINE
- PDMH PROPOSED DRAIN MANHOLE
- ⊙ PDS PROPOSED DOWNSPOUT
- ⊙ PVMH PROPOSED VORTEX MANHOLE
- PS — PROPOSED SEWER LINE
- PFD PROPOSED FLOOR DRAIN
- PSEP PROPOSED OIL & GRIT SEPARATOR
- PS — PROPOSED SEWER LINE
- PW — PROPOSED WATER LINE
- ⊙ PROPOSED HYDRANT
- PG — PROPOSED GAS LINE
- OP PROPOSED OBSERVATION PORT
- R= RIM ELEVATION
- a=/b=/i= INVERT ELEVATIONS

**PROPOSED UTILITY NOTES:**

1. PROPOSED TRANSFORMER LOCATION IS APPROXIMATE AND MAY CHANGE PER REQUEST OF UTILITY COMPANY. ADDITIONAL UTILITY INFORMATION IS NEEDED TO VERIFY THE FINAL LOCATION.
2. COORDINATE UTILITY CONSTRUCTION WITH ALL TRADES AND CORRESPONDING DESIGN PLANS FOR CONNECTION TO PROPOSED BUILDING AND SITE UTILITIES.
3. PROPOSED ELECTRIC AND UTILITY CONNECTIONS DEPICTED HERON HAVE BEEN PROVIDED FOR SCHEMATIC PURPOSE ONLY. ACTUAL UTILITY CONFIGURATIONS SHALL BE DETERMINED BY RESPECTIVE UTILITY PROVIDERS, MEP SPECIFICATIONS AND ARCHITECTURAL PLANS.
4. LOCATION OF PROPOSED SUBSURFACE SEWAGE DISPOSAL SYSTEM AND COMPONENTS SHOWN FOR SCHEMATIC PURPOSE ONLY. ALL DESIGN CALCULATIONS AND DETAIL FOR SYSTEM SHALL BE SHOWN ON SUBSURFACE SEWAGE DISPOSAL SYSTEM CONSTRUCTION PLANS WHICH WILL BE PROVIDED TO THE BOARD OF HEALTH FOR REVIEW AND APPROVAL.
5. INTERIOR FLOOR DRAIN SYSTEM SHALL BE DESIGNED BY MEP AND SUBMITTED TO THE DPS FOR REVIEW AND APPROVAL PRIOR TO CONSTRUCTION.
6. LOCATIONS OF ROOF DRAIN GUTTER DOWNSPOUTS TO BE COORDINATED WITH ARCHITECTURAL PLANS.
7. REFER TO SUBSURFACE DETENTION FACILITY DETAIL (SHEET 6) FOR ADDITIONAL INLET INFORMATION.

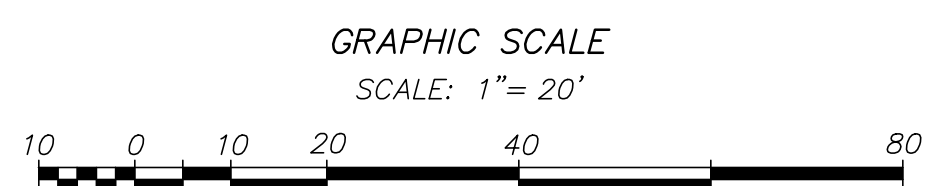
REVISIONS	DATE	DESCRIPTION
REVISED SUBMISSION	05/20/20	NEB
REVISED FLOOR DRAIN LOCATIONS	03/25/20	NEB
REVISED DRAINAGE LAYOUT	02/06/20	AF

**93 STATE STREET**  
**SITE UTILITY PLAN**  
 LOCATED IN  
**NEWBURYPORT, MASSACHUSETTS**  
 (ESSEX COUNTY)  
 PREPARED FOR  
**INSTITUTION FOR SAVINGS**

**MERIDIANS ASSOCIATES**  
 500 CUMMINGS CENTER, SUITE 5950  
 BEVERLY, MASSACHUSETTS 01915  
 TELEPHONE: (978) 299-4447  
 WWW.MERIDIANSASSOC.COM  
 69 MILK STREET, SUITE 302  
 WESTBOROUGH, MASSACHUSETTS 01581  
 TELEPHONE: (508) 871-7030  
 DESIGNED BY: NB/AF  
 CHECKED BY: CEW

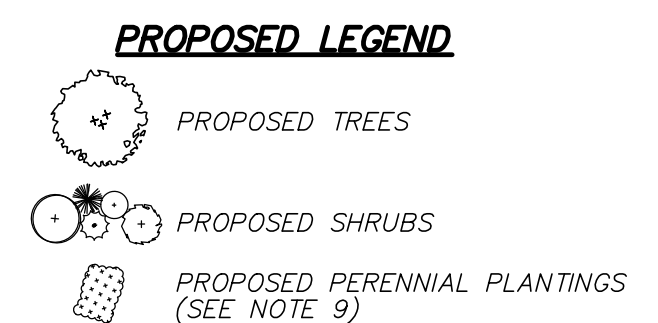
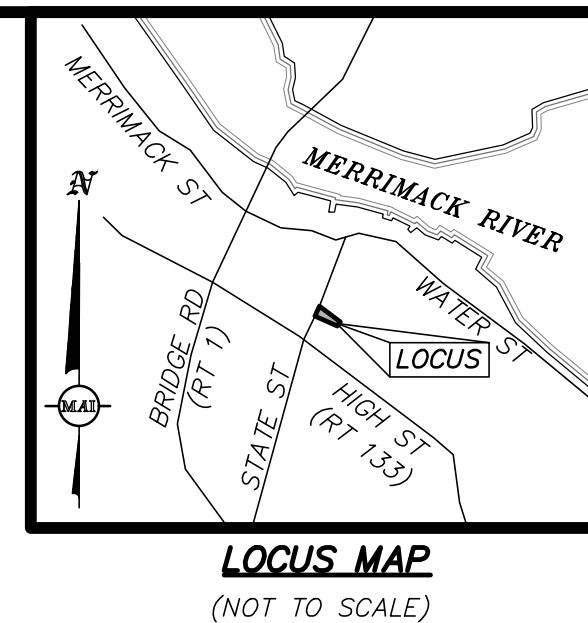
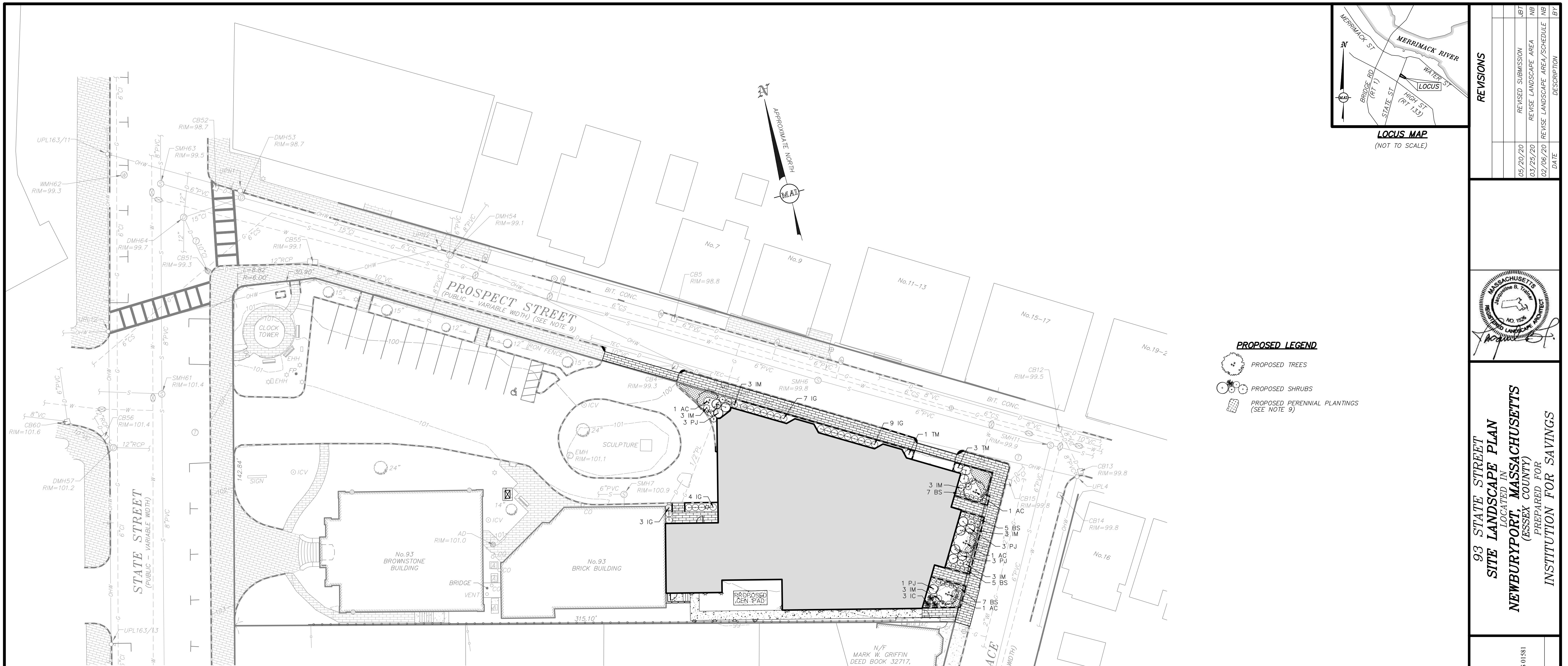
DATE: JANUARY 8, 2020  
 SCALE: 1"=20'  
 SHEET No. 4 of 7  
 PROJECT No. 6215

FOR PERMITTING ONLY  
NOT FOR CONSTRUCTION



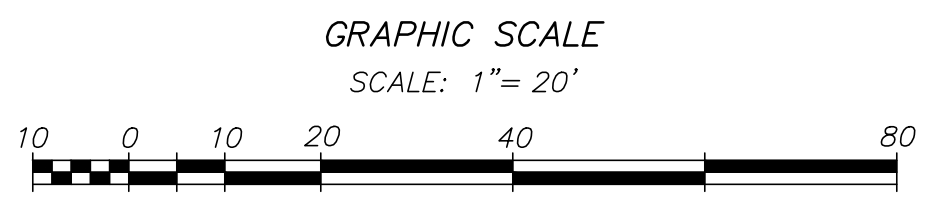
(XREF: 6215-REC)  
DWG. No. 6215\_SITE.DWG





QTY	SYM	LATIN NAME	COMMON NAME	SIZE	NOTES
<b>TREES</b>					
AC		Amelanchier grandiflora 'Autumn Brilliance'	Autumn Brilliance Serviceberry	6'-8" Ht.   B&B	ST   White   Birds   Showy   Edible Fruit   Fall Color   April-May
<b>SHRUBS</b>					
BS		Buxus sempervirens 'Green Mountain'	Green Mountain Boxwood	30"-36" Ht.   #7 Pot	DR   Greenish-Cream   Winter Interest   April-May   Hedge
IC		Ilex crenata 'Sky Pencil'	Sky Pencil Holly	36"-48" Ht.   #10 Pot	DR   DT   ST   18" OC   Dark Green   Birds/Butterflies   Winter Interest   May-June
IG		Ilex glabra 'Shamrock'	Shamrock inkberry	24"-30" Ht.   B&B	DR   DT   N   ST   36" OC   Greenish-White   Birds   Evergreen   May-June
IM		Ilex x meserveae	Meserve Hybrid Holly	24"-30" Ht.   B&B	DR   DT   ST   36" OC   Greenish-White   Birds   Evergreen   May-June   Hedge
PJ		Pieris japonica 'Mountain Fire'	Mountain Fire Andromeda	24"-30" Ht.   #3 Pot	DR   DT   48" OC   White   Evergreen   Winter Interest   Heavy Shade   April
TM		Taxus x media 'Hatfieldii'	Hatfield Yew	36"-60" Ht.   #7 Pot	DT   ST   60" OC   Evergreen   Winter Interest   Heavy Shade
<b>PERENNIALS &amp; GROUND COVER</b>					
EP		Echinacea purpurea	Purple Coneflower	#1 Pot	DR   DT   N   ST   18" OC   Purple   Birds/Butterflies   June-August
DP		Dennstaedtia punctilobula	Hay Scented Fern	#1 Pot	DR   N   30" OC   Fall Color   Heavy Shade
HS		Hosta 'Big Daddy'	Big Daddy Hosta	#1 Pot	ST   30" OC   White-Pale Lavender   Hummingbirds   Showy   Heavy Shade   July-August
FB		Hosta 'Fragrant Bouquet'	Fragrant Bouquet Hosta	#2 Pot	ST   30" OC   White   Fragrant   Hummingbirds   Heavy Shade   June-July
NW		Nepeta x faassenii 'Walker's Low'	'Walker's Low' Catmint	18" Ht.   #1 Pot	DR   DT   ST   18" OC   Purple   Fragrant   June-September
RH		Rudbeckia hirta	Black-eyed Susan	#1 Pot	DR   DT   N   ST   18" OC   Yellow   Butterflies   June-September

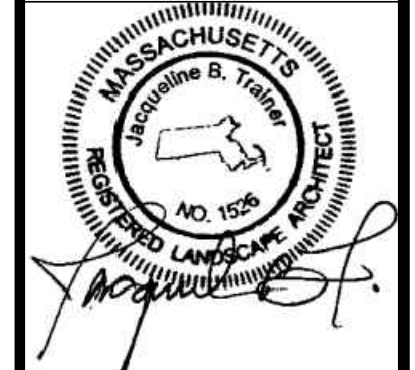
DR = DEER RESISTANT | DT = DROUGHT TOLERANT | N = NATIVE | ST = SALT TOLERANT | OC = ON-CENTER | B&B = BALLED AND BURLAPPED



- NOTES:**
- ALL PLANT MATERIAL SHALL CONFORM TO THE MINIMUM GUIDELINES ESTABLISHED BY THE "AMERICAN STANDARD FOR NURSERY STOCK" PUBLISHED BY AMERICANHORT 2014 AND AS AMENDED.
  - ALL PLANT MATERIAL SHALL BE GUARANTEED FOR A PERIOD OF ONE YEAR FOLLOWING THE DATE OF ACCEPTANCE BY OWNER OR OWNER'S REPRESENTATIVE.
  - NO DEVIATIONS OR SUBSTITUTIONS FROM THE PLANT SCHEDULE SHALL BE ALLOWED WITHOUT WRITTEN AUTHORIZATION FROM THE OWNER'S REPRESENTATIVE PRIOR TO INSTALLATION.
  - THE CONTRACTOR SHALL BE RESPONSIBLE FOR PROTECTING ALL PLANT MATERIALS INCLUDING EXISTING TREES AGAINST DAMAGE DURING THE CONSTRUCTION PERIOD. PROTECTION SHALL BEGIN PRIOR TO COMMENCEMENT OF ANY WORK AND CONTINUE UNTIL FINAL ACCEPTANCE BY OWNER OR OWNER'S REPRESENTATIVE.
  - ALL NEW PLANTING AREAS SHALL BE EXCAVATED TO A DEPTH THAT CONFORMS WITH THE PLANTING DETAILS (SHEET 7 OF THIS PLAN SET) AND RECEIVE NEW PLANTING SOIL.
  - ALL MATERIALS REMOVED FROM SITE SHALL BE DISPOSED OF IN A LEGAL AND PROFESSIONAL MANNER.
  - ALL DISTURBED AREAS SHALL BE RE-SEED WITHIN 15 DAYS OF DISTURBANCE OR REPLANTING AS SHOWN HEREON WITH A DROUGHT TOLERANT TURFGRASS SEED MIX (80% TALL FESCUE, 10% PERENNIAL RYE GRASS, 10% KENTUCKY BLUEGRASS) AT THE DIRECTION OF THE OWNER'S REPRESENTATIVE.
  - BALLED AND BURLAPPED PLANTS MAY BE PLANTED IN THE SPRING FROM APRIL 1ST UNTIL JUNE 15TH AND IN THE FALL FROM AUGUST 15TH TO NOVEMBER 1ST.
  - AREAS OF PROPOSED PERENNIAL PLANTINGS SHALL CONSIST OF SPECIFIED PERENNIALS AND GROUND COVER SPECIES AS NOTED IN THE PLANT SCHEDULE. ACTUAL LAYOUT TO BE DETERMINED AND APPROVED IN FIELD BY OWNER'S REPRESENTATIVE AT TIME OF PLANTING.

**REVISIONS**

DATE	DESCRIPTION
05/20/20	REVISED SUBMISSION
03/25/20	REVISE LANDSCAPE AREA
02/06/20	REVISE LANDSCAPE AREA/SCHEDULE



**93 STATE STREET  
SITE LANDSCAPE PLAN**  
LOCATED IN  
**NEWBURYPORT, MASSACHUSETTS**  
(ESSEX COUNTY)  
PREPARED FOR  
**INSTITUTION FOR SAVINGS**

**MERIDIANS ASSOCIATES**  
500 CUMMINGS CENTER, SUITE 5950  
BEVERLY, MASSACHUSETTS 01915  
TELEPHONE: (978) 290-0447  
WWW.MERIDIANSASSOC.COM

CHECKED BY: CEW  
DESIGNED BY: NB

DATE:  
JANUARY 8, 2020

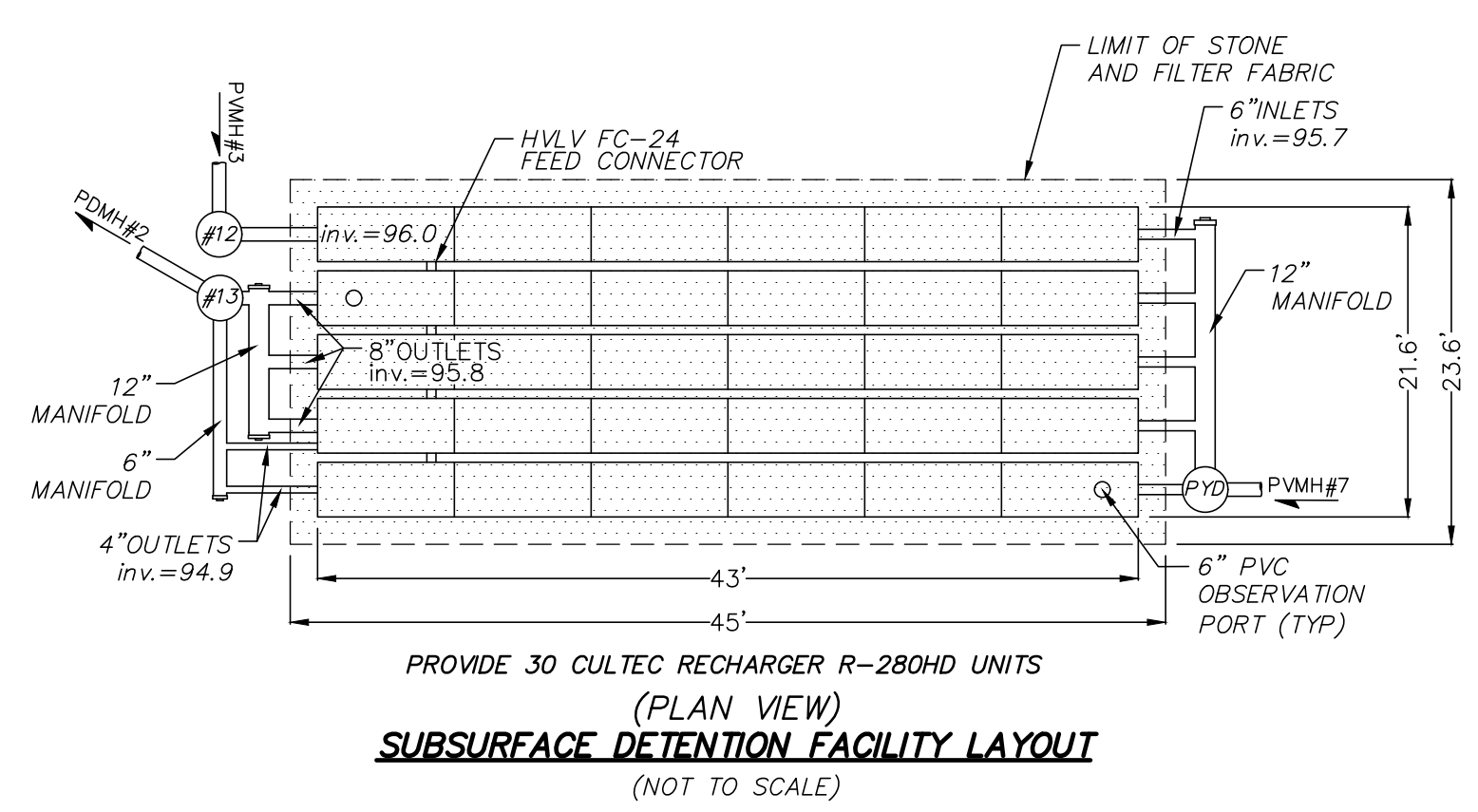
SCALE:  
1" = 20'

SHEET No.  
**5 of 7**

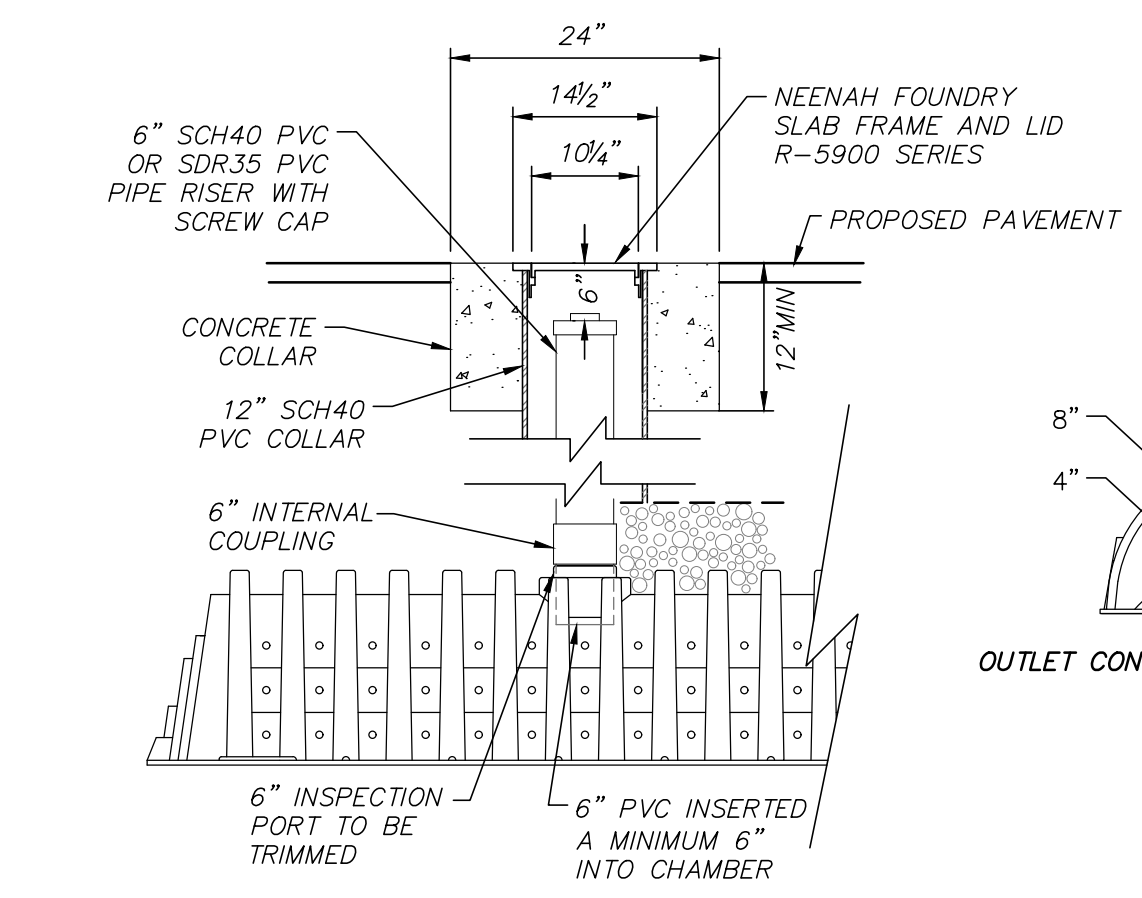
PROJECT No.  
**6215**

FOR PERMITTING ONLY  
NOT FOR CONSTRUCTION

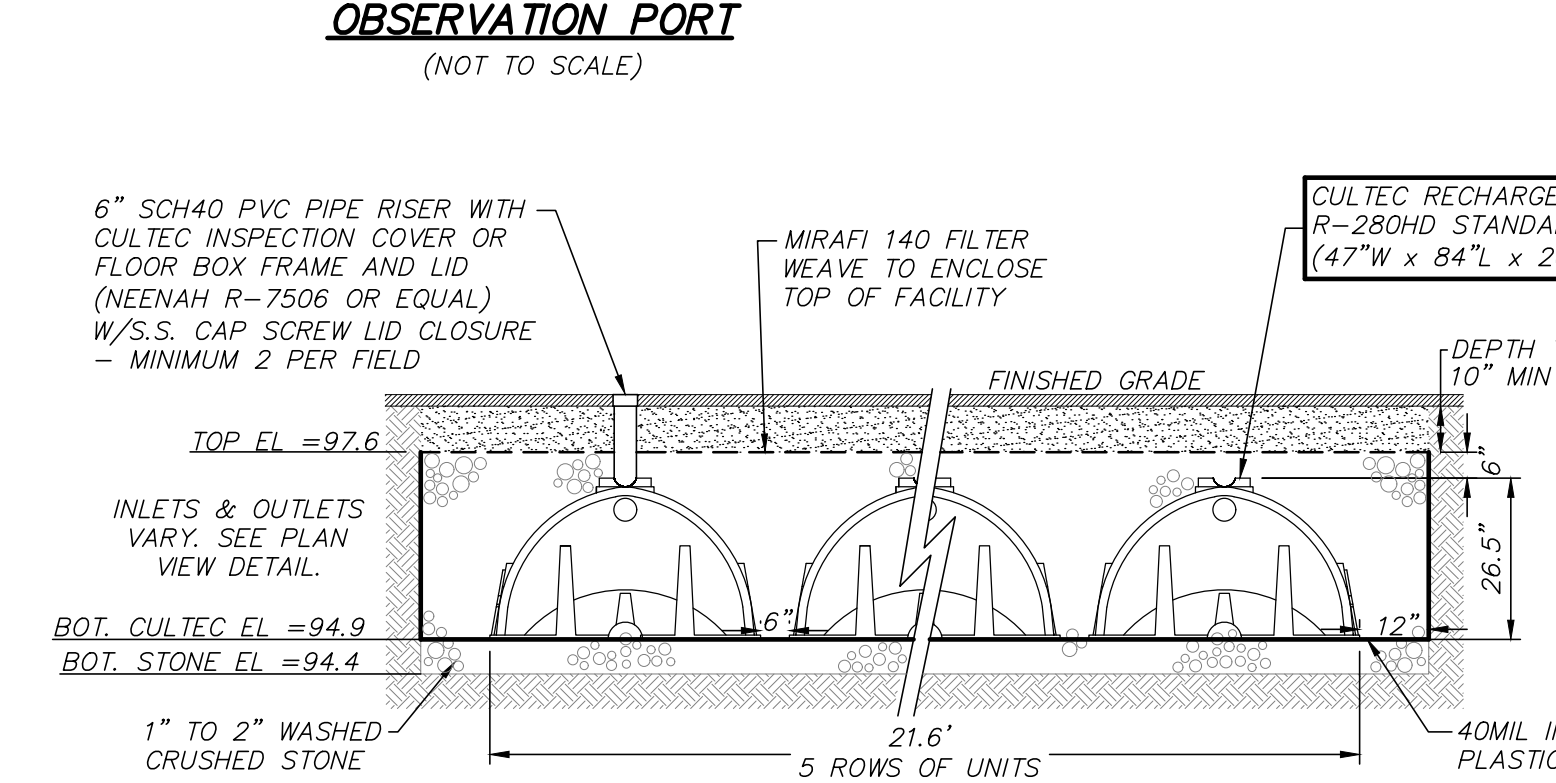




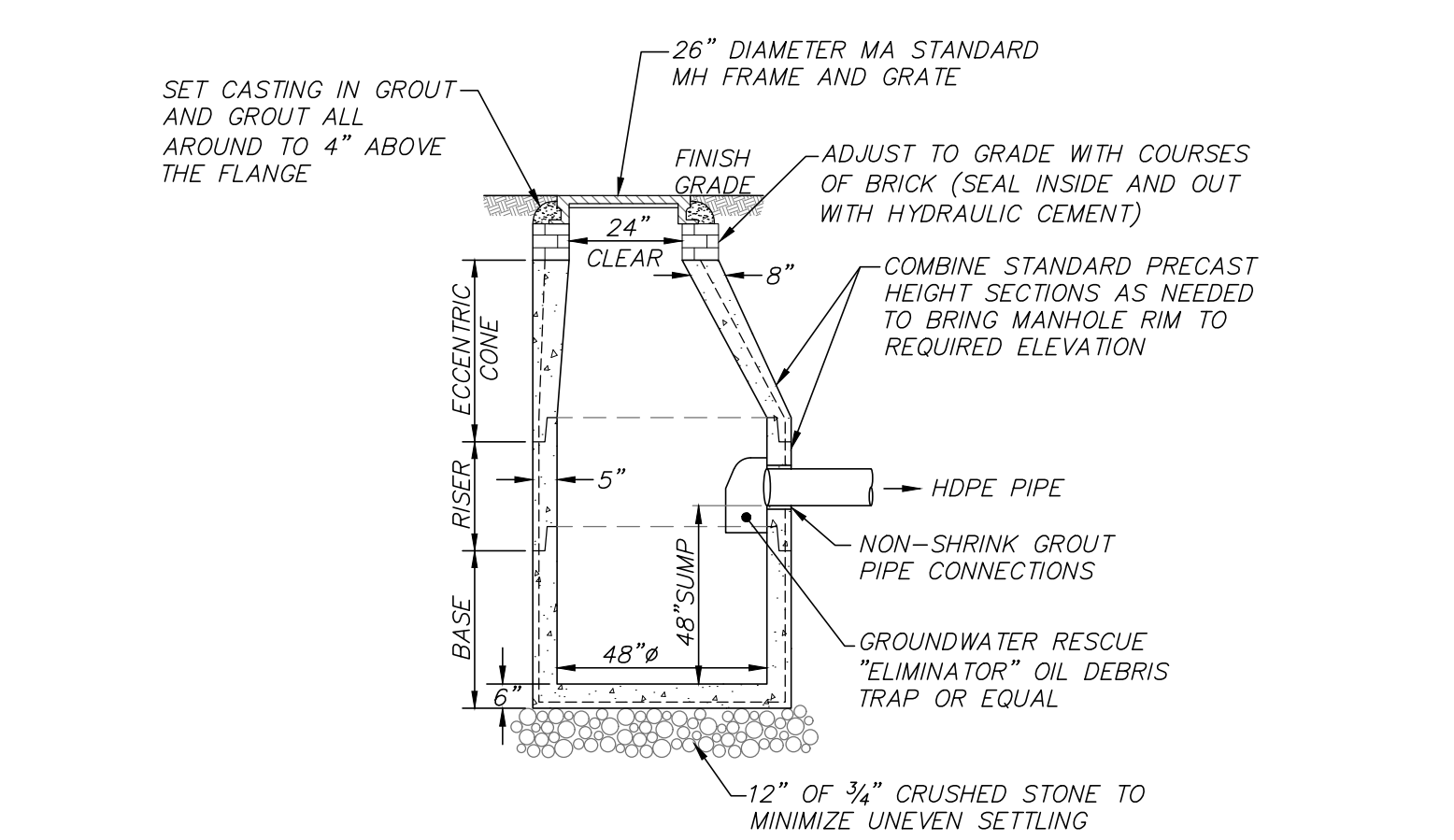
**SUBSURFACE DETENTION FACILITY LAYOUT**  
(NOT TO SCALE)



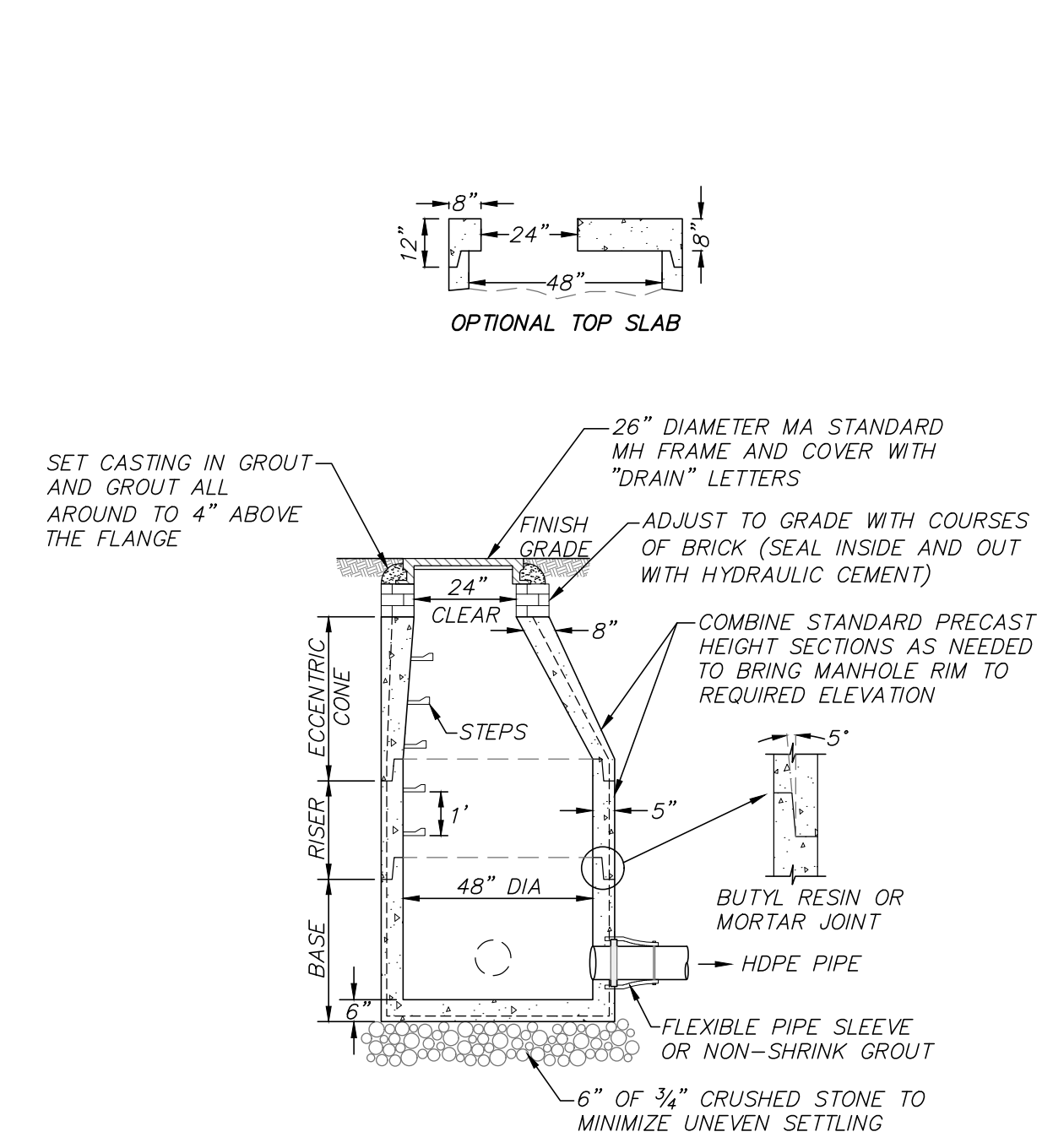
**OUTLET CONTROL ENLARGEMENT DETAIL**  
(NOT TO SCALE)



**SUBSURFACE DETENTION FACILITY**  
(NOT TO SCALE)

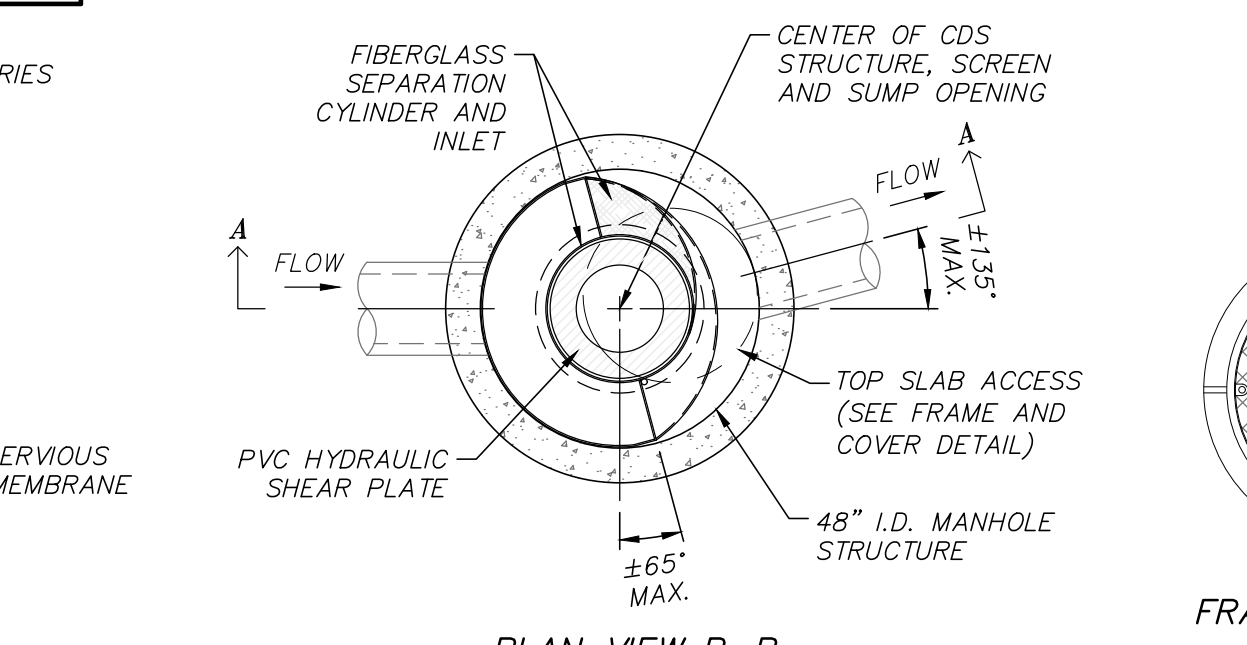


**CATCHBASIN WITH OIL DEBRIS TRAP**  
(NOT TO SCALE)

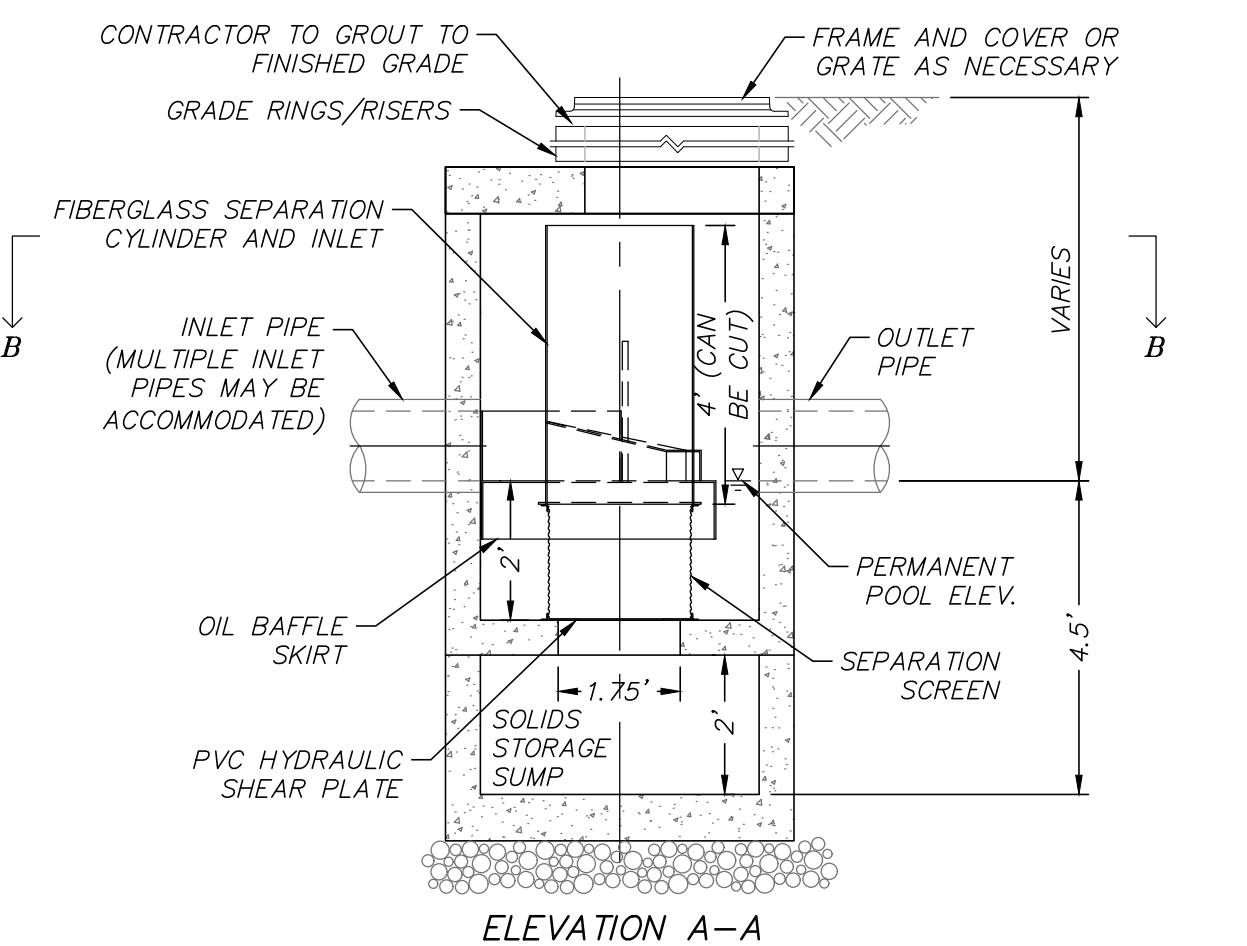


**DRAIN MANHOLE DETAIL**  
(NOT TO SCALE)

- NOTES:**
- 48" DIAMETER DRAIN MANHOLE AS MANUFACTURED BY SHEA CONCRETE PRODUCTS OR EQUAL.
  - CONCRETE: 4,000 PSI MINIMUM AFTER 28 DAYS.
  - REINFORCED STEEL CONFORMS TO LATEST ASTM A185 SPEC. 0.12 SQ IN./LINEAL FT AND 0.12 SQ IN (BOTH WAYS) BASE BOTTOM.
  - H-20 DESIGN LOADING PER AASHTO HS-20-44; ASTM C478 SPEC FOR PRECAST REINFORCED CONCRETE MANHOLE SECTIONS.
  - BUTYL RESIN JOINT CONFORMS TO LATEST ASTM C990 SPEC.
  - STEEL REINFORCED COPOLYMER POLYPROPYLENE PLASTIC STEP CONFORMS TO LATEST ASTM C478 SPEC.
  - PROVIDE EXTERIOR DAMPPROOFING AS REQUIRED.

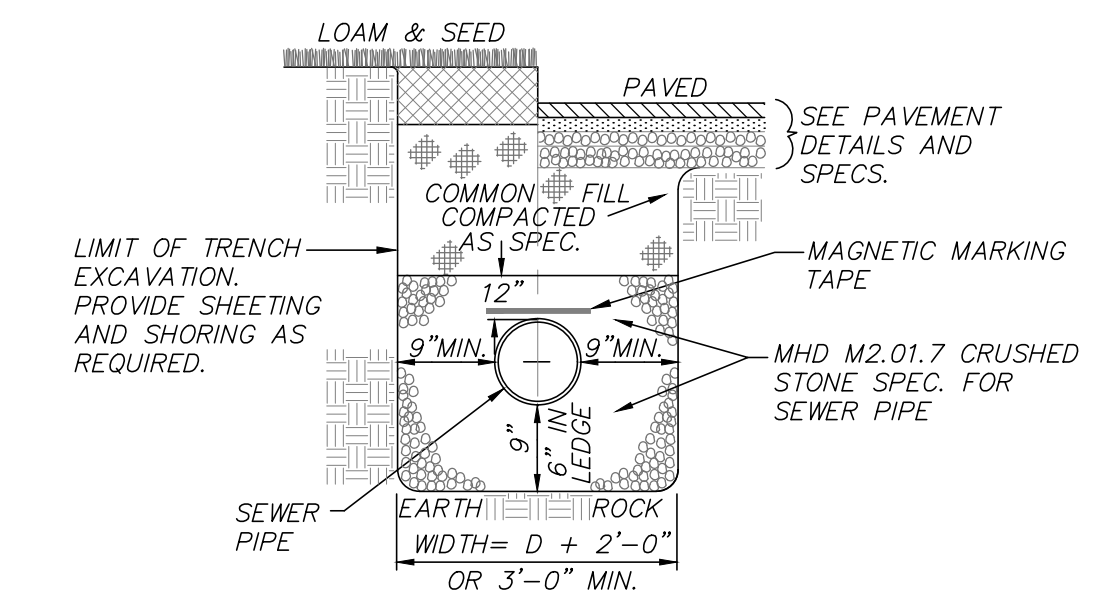


**FRAME AND COVER**

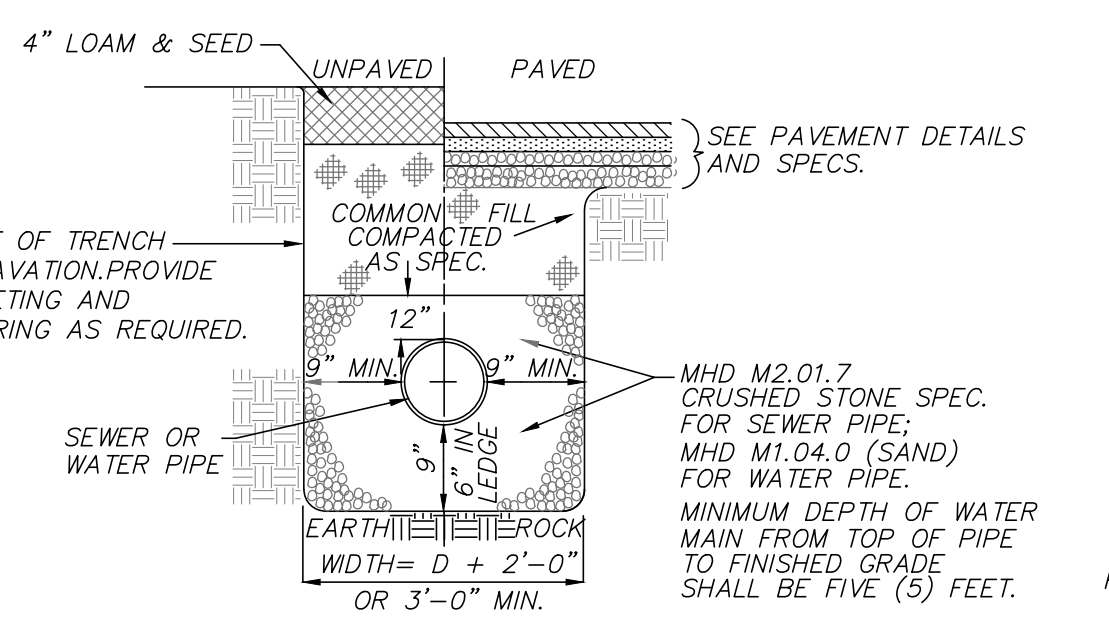


**CONTECH CDS DETAIL**  
(NOT TO SCALE)

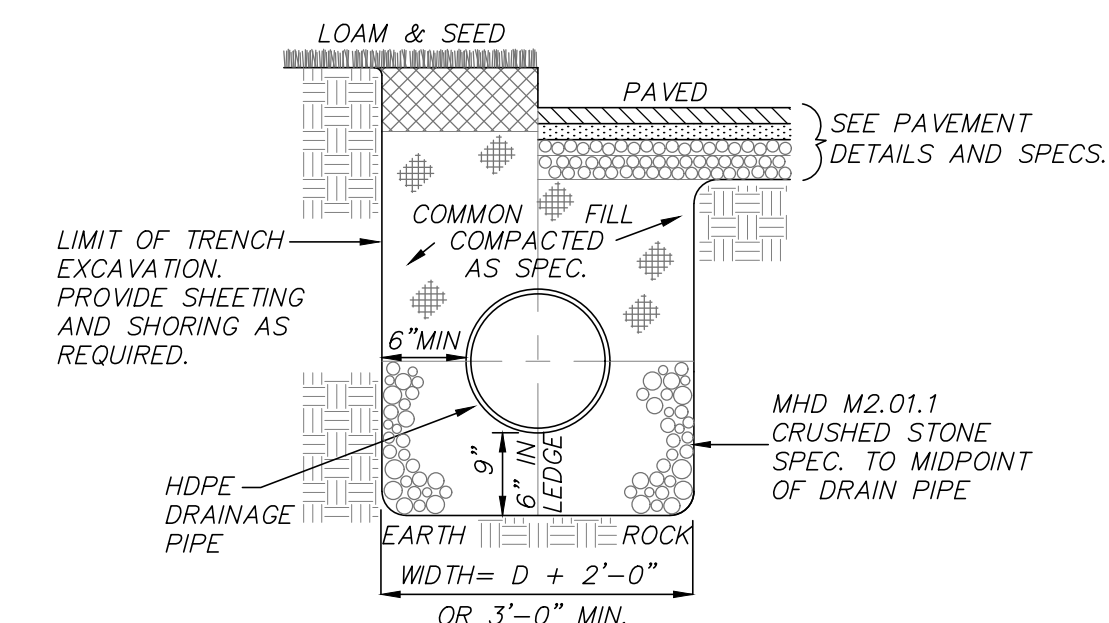
- NOTES:**
- PROVIDE CDS 2015-4-C AS MANUFACTURED BY CONTECH ENGINEERED SOLUTIONS OR EQUAL.
  - UNIT CAN BE CONFIGURED WITH GRATED COVER AS NECESSARY.



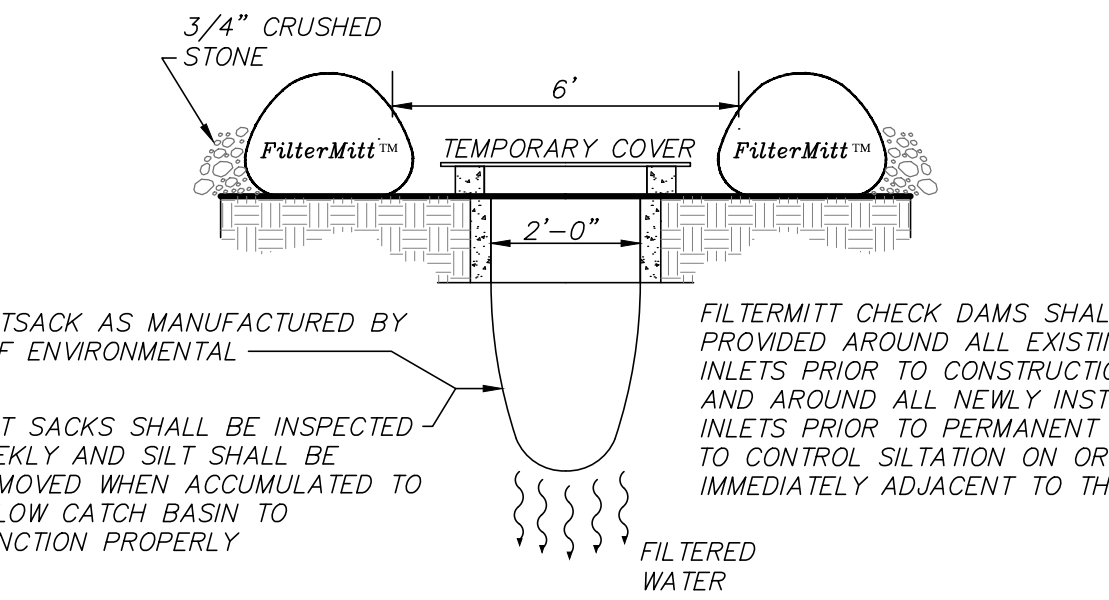
**SEWER TRENCH DETAIL**  
(NOT TO SCALE)



**WATER TRENCH DETAIL**  
(NOT TO SCALE)

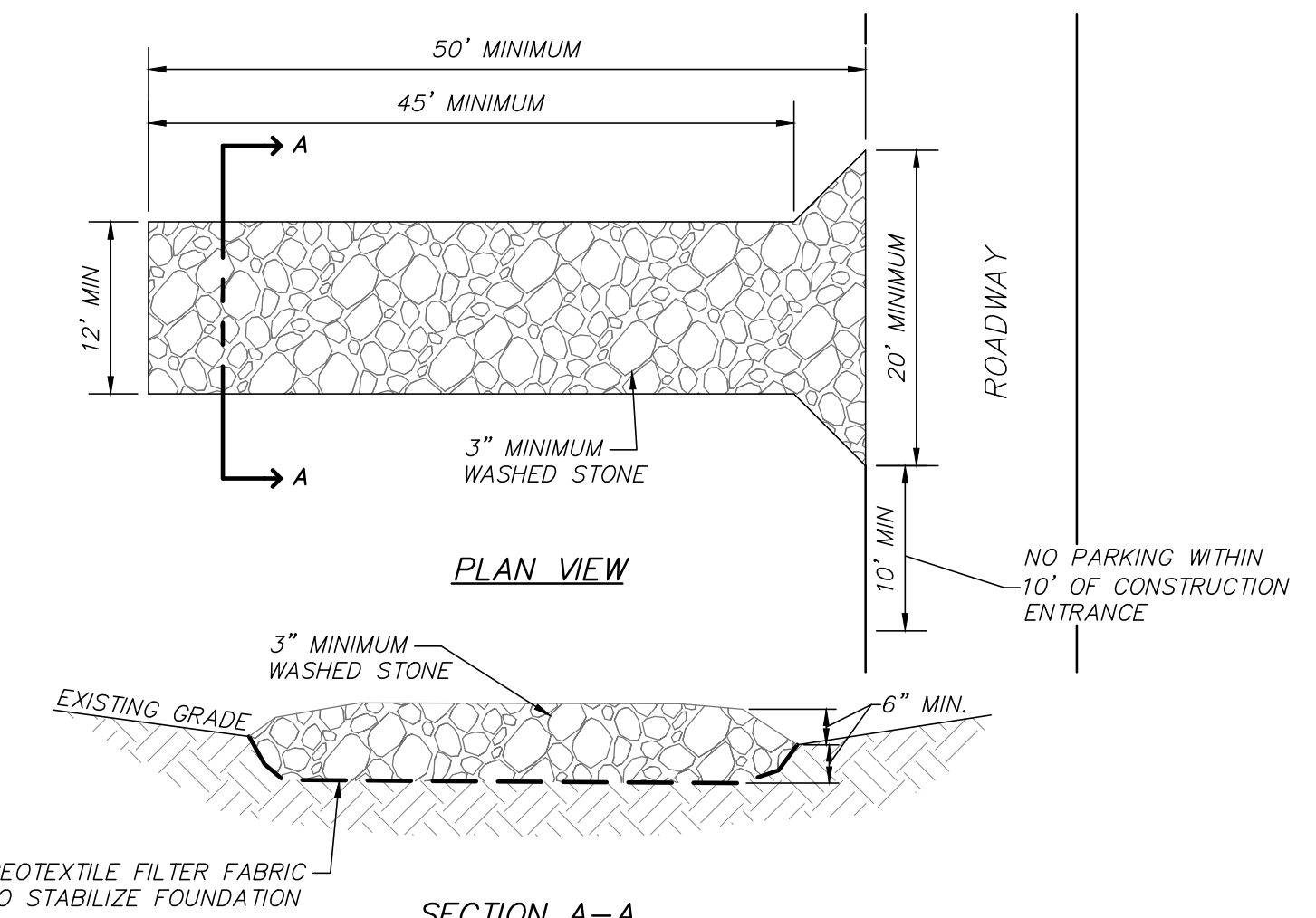


**DRAIN TRENCH**  
(NOT TO SCALE)



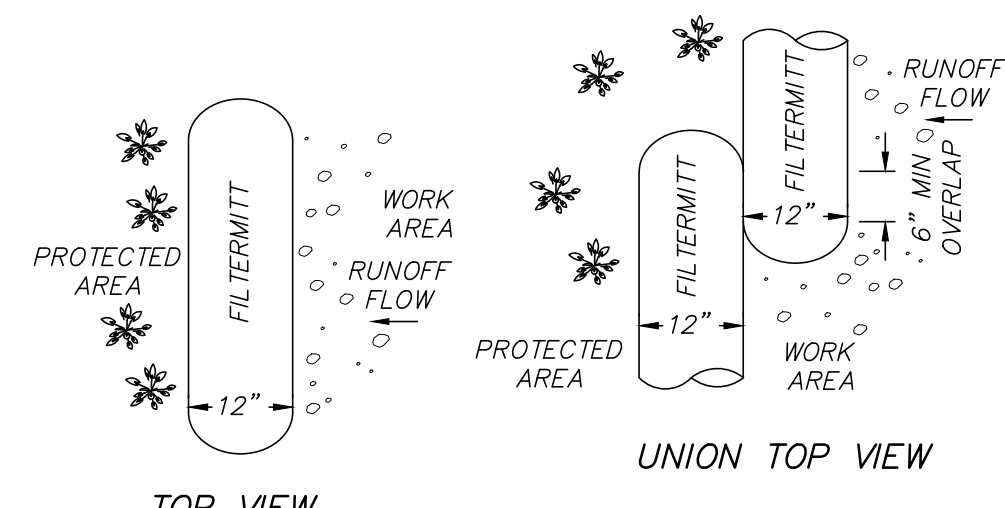
**CATCH BASIN FILTER DETAIL**  
(NOT TO SCALE)

- NOTE:**
- CONTRACTOR TO VISUALLY INSPECT CATCH BASIN FILTERS WEEKLY AND AFTER ANY STORM EVENT TO ENSURE PROPER FUNCTION.

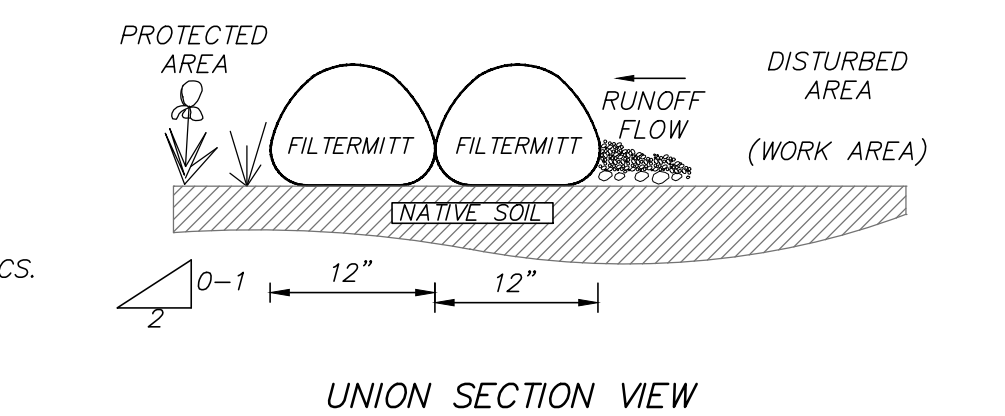


**TEMPORARY STABILIZED CONSTRUCTION ENTRANCE**  
(NOT TO SCALE)

- NOTE:**
- LOCATION OF STABILIZED CONSTRUCTION ENTRANCE TO BE APPROVED BY OWNER'S REPRESENTATIVE PRIOR TO START OF CONSTRUCTION ACTIVITIES.



**UNION TOP VIEW**

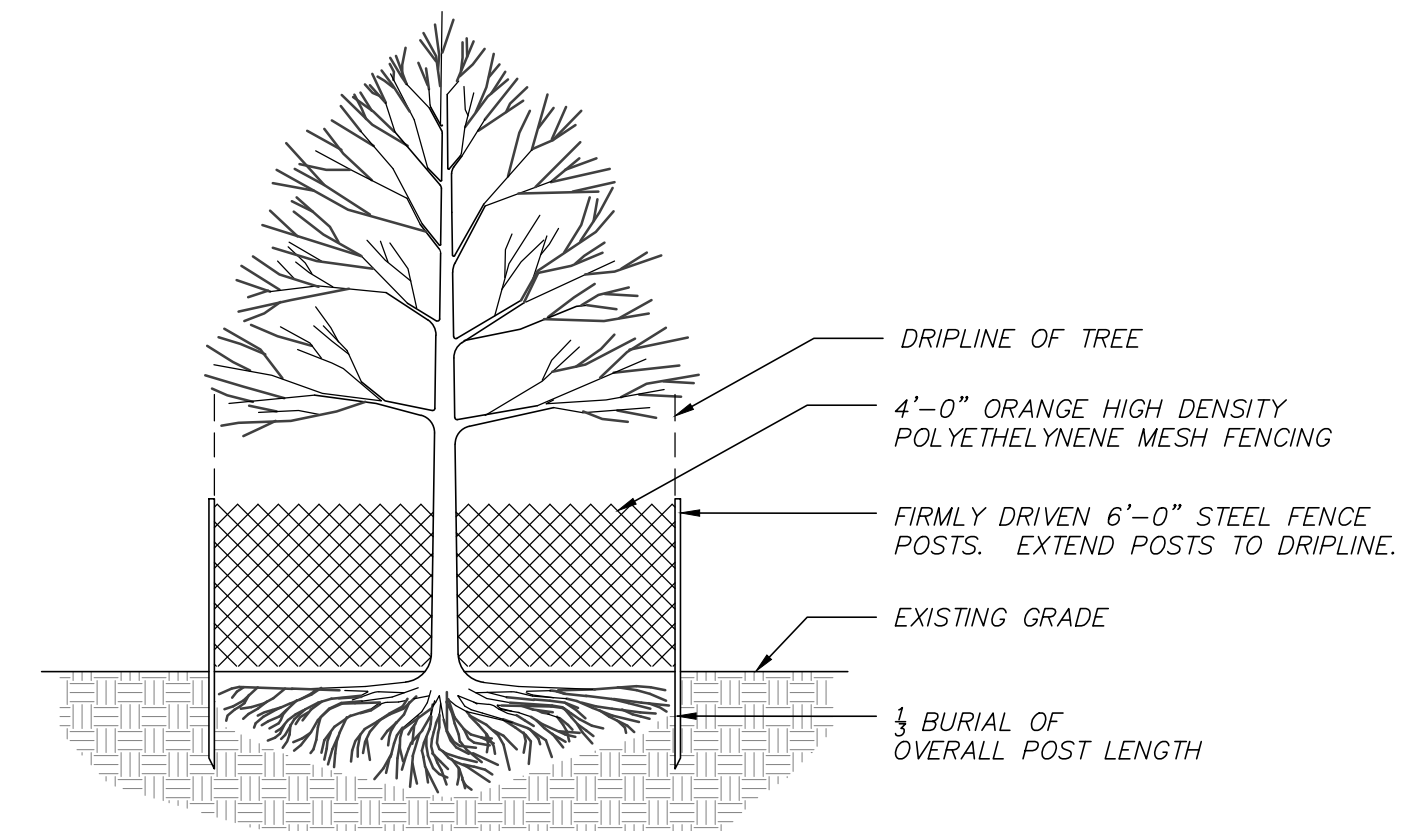


**UNION SECTION VIEW**

- FILTERMITT COMPONENTS:**
- OUTSIDE CASING: 100% ORGANIC HESSIAN
- FILLER INGREDIENT: FIBER ROOT MULCH
- BLEND OF COARSE & FINE COMPOST & SHREDED WOOD
  - PARTICLE SIZES: 100% PASSING A 3" SCREEN; 90-100% PASSING A 1" SCREEN; 70-100% PASSING A 0.75" SCREEN; 30-75% PASSING A 0.25" SCREEN
  - WEIGHT: APPROXIMATELY 850 LBS/CUYD (AVE 30 LBS/LF)
- NOTE:**
- PROVIDE FILTERMITT EROSION CONTROL AS MANUFACTURED BY GROUNDCAPES EXPRESS, INC. P.O. BOX 737 WRENTHAM, MA. 02093 (508)-384-7140 OR EQUAL

- FILTERMITT INSTALLATION:**
- SECTIONS CAN BE CONSTRUCTED ON SITE IN LENGTHS FROM 1' TO 100'.
- SECTIONS CAN ALSO BE DELIVERED TO THE SITE IN LENGTHS FROM 1' TO 8'.
- THE FLEXIBILITY OF FILTERMITT ALLOWS IT TO CONFORM TO ANY CONTOUR TERRAIN WHILE HOLDING A SLIGHTLY OVAL SHAPE AT 12" HIGH BY 12" WIDE.
- WHERE SECTION ENDS MEET, THERE SHALL BE AN OVERLAP OF 6" OR GREATER.

**EROSION CONTROL SOCK - FILTERMITT DETAIL**  
(NOT TO SCALE)



**TREE PROTECTION**  
(NOT TO SCALE)

- NOTE:**
- ALL TREES >3" DBH WITHIN THE LIMIT OF WORK SHALL RECEIVE TREE PROTECTION PRIOR TO THE START OF CONSTRUCTION ACTIVITIES.

REVISIONS	DATE	DESCRIPTION
05/20/20	REVISION SUBMISSION	
03/25/20	NO CHANGES THIS SHEET	
02/06/20	PEER REVIEW COMMENTS	01/20/20

93 STATE STREET  
SITE DETAILS  
LOCATED IN  
NEWBURYPORT, MASSACHUSETTS  
(ESSEX COUNTY)  
PREPARED FOR  
INSTITUTION FOR SAVINGS

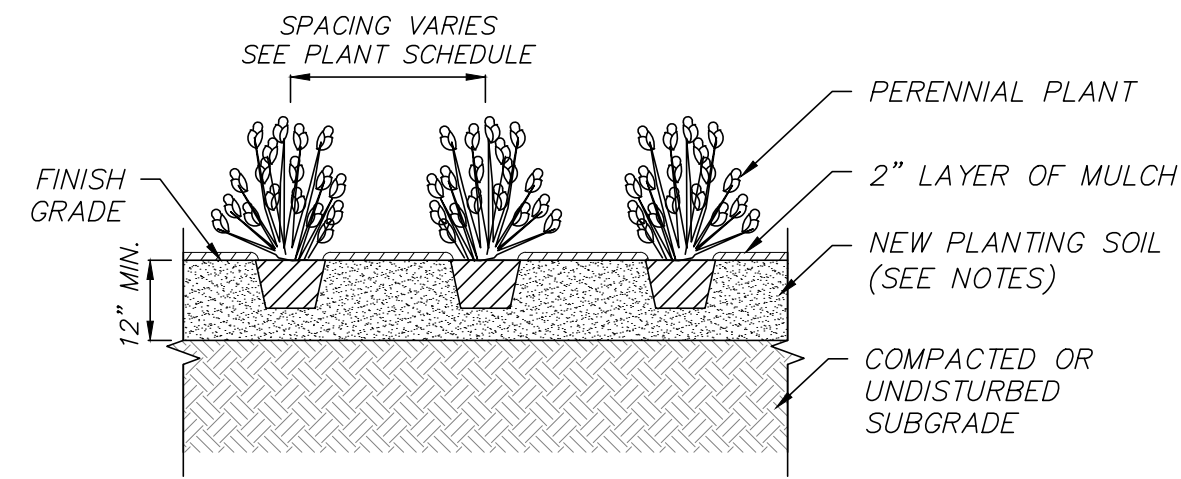
**MERIDIANS ASSOCIATES**  
500 CUMMINGS CENTER, SUITE 5950  
BEVERLY, MASSACHUSETTS 01915  
TELEPHONE: (978) 299-0447  
WWW.MERIDIANSASSOC.COM

69 MILK STREET, SUITE 302  
WESTBOROUGH, MASSACHUSETTS 01581  
TELEPHONE: (508) 871-7030

CHECKED BY: CEW  
DESIGNED BY: NB

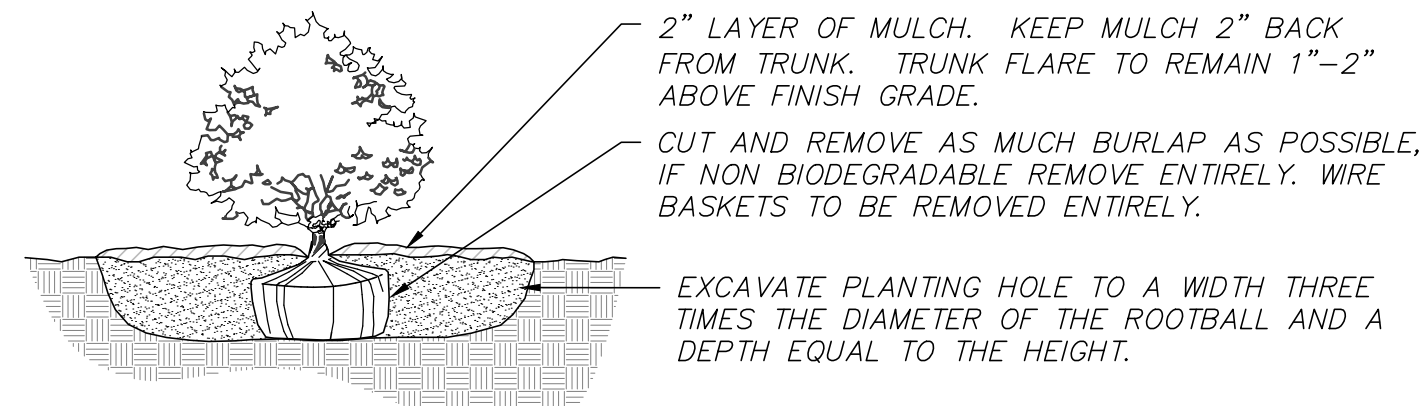
DATE: JANUARY 8, 2020  
SCALE: AS NOTED  
SHEET No. 6 of 7  
PROJECT No. 6215

FOR PERMITTING ONLY  
NOT FOR CONSTRUCTION



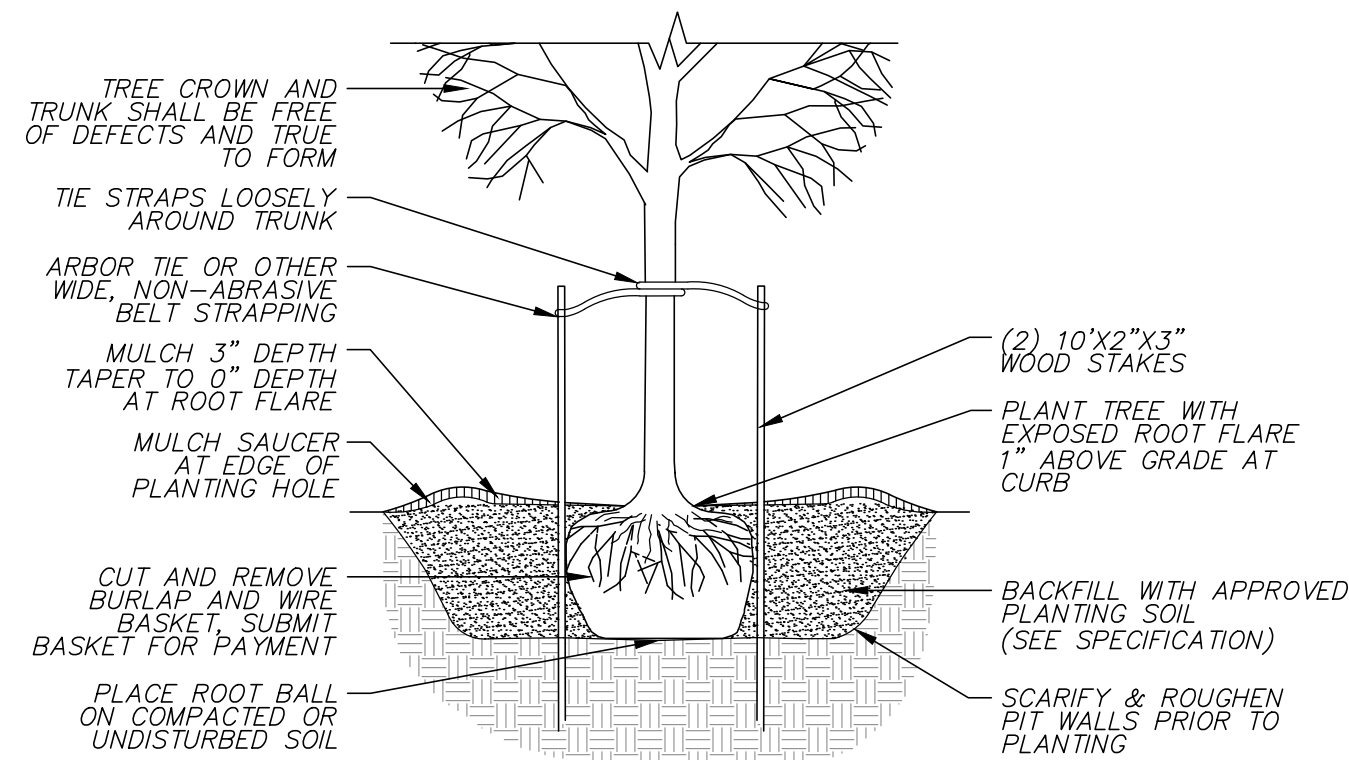
- NOTE:
- SEE LANDSCAPE NOTES FOR ADDITIONAL PLANTING REQUIREMENTS.
  - SPACE PLANTS EQUALLY TO PROVIDE CONSISTENT COVER OVER INDICATED PLANTING BED.
  - ALL ROOT BALLS TO BE SCARIFIED PRIOR TO BACKFILLING.

**GROUNDCOVER / ANNUAL / PERENNIAL PLANTING**  
(NOT TO SCALE)

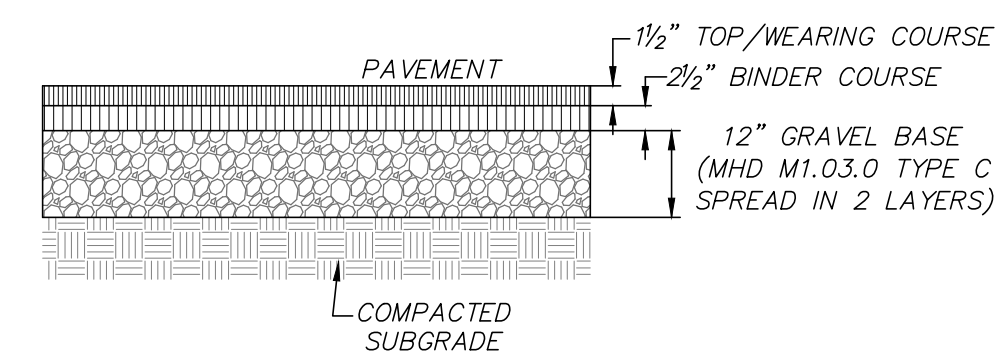


- NOTES:
- BACKFILL PLANTING HOLE WITH NEW PLANTING SOIL.
  - BACKFILL HALF THE SOIL AND WATER TO SETTLE OUT AIR POCKETS, COMPLETE BACKFILLING AND REPEAT WATERING.
  - IF ROOTS ARE CIRCLING THE ROOTBALL EXTERIOR, CUT ROOTS VERTICALLY IN SEVERAL PLACES PRIOR TO PLANTING.

**SHRUB PLANTING**  
(NOT TO SCALE)

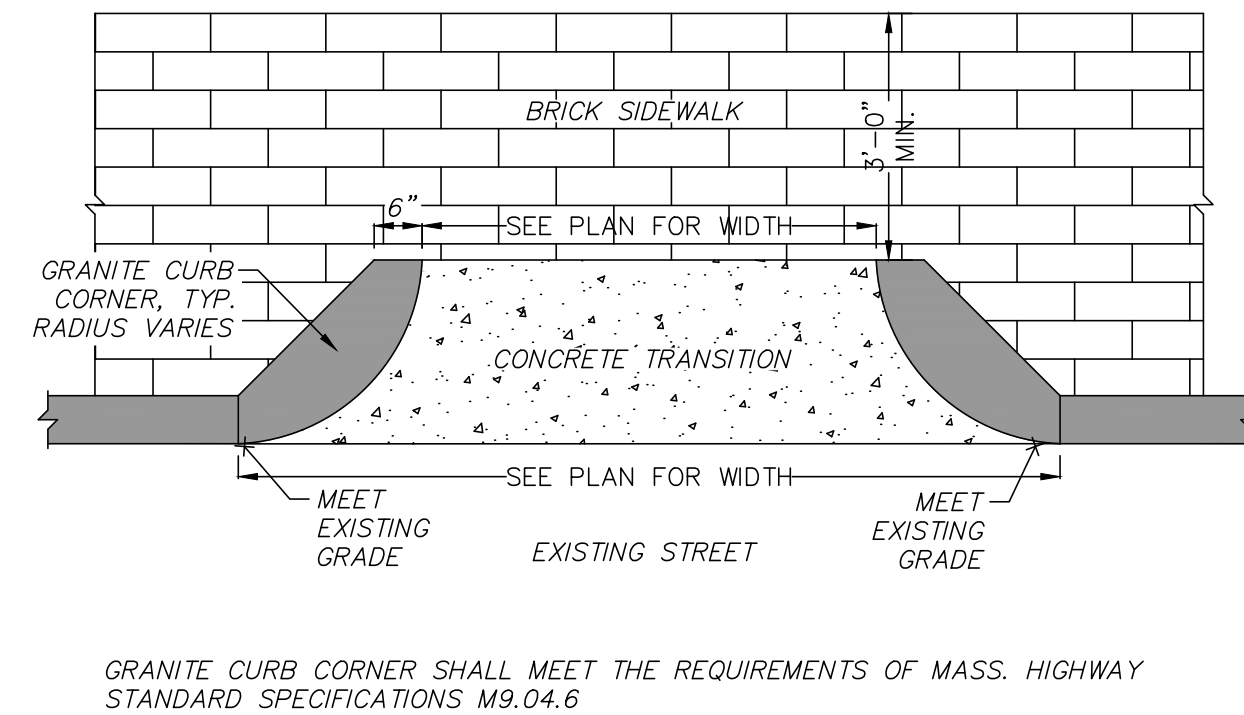
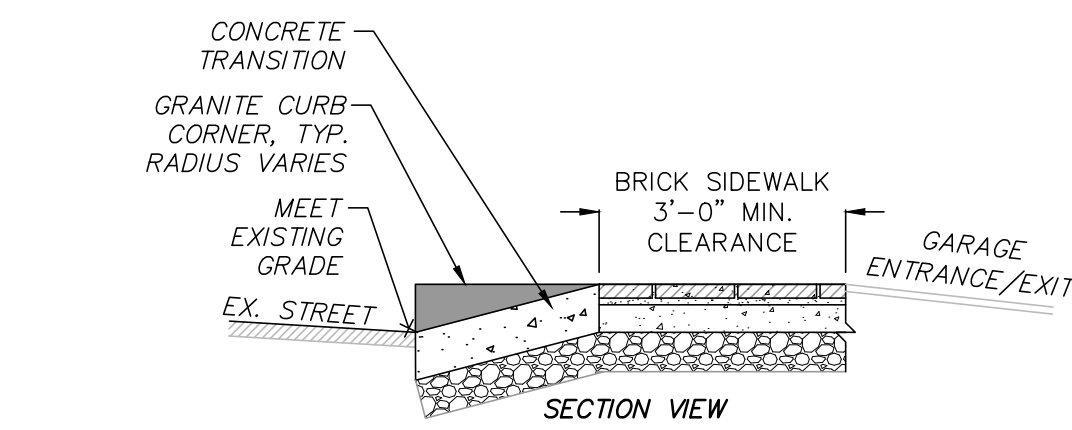


**TREE PLANTING**  
(NOT TO SCALE)

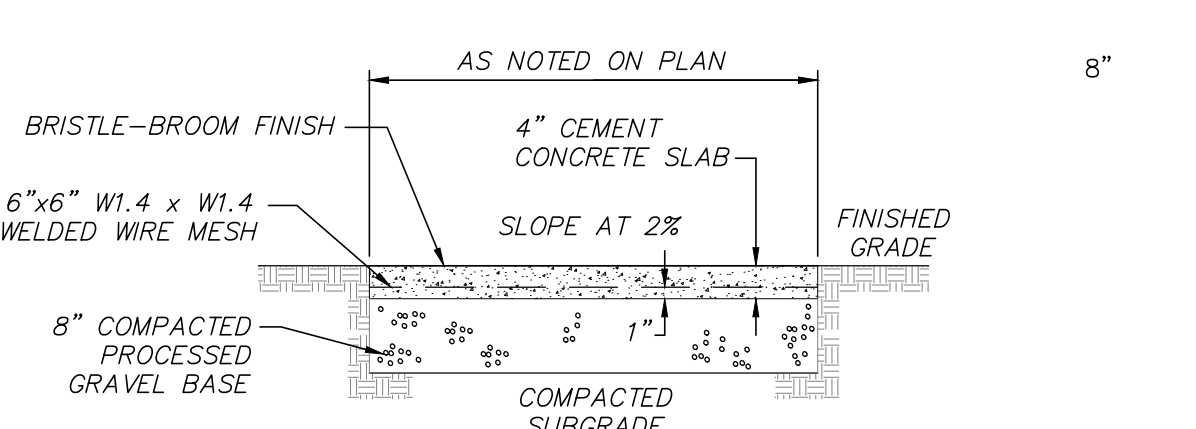
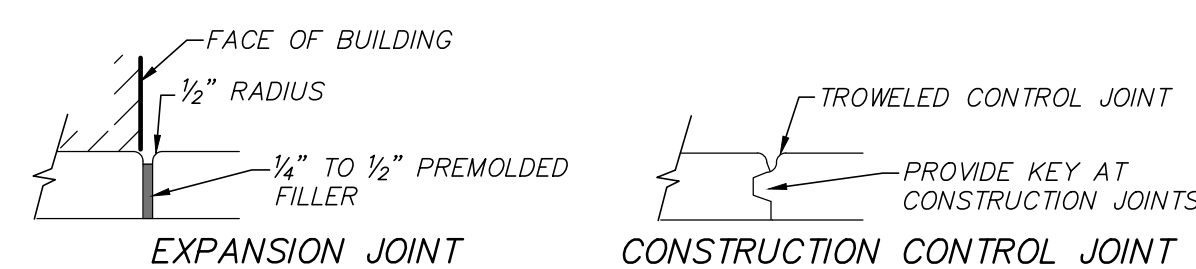


- NOTE:
- THE WEARING AND BINDER COURSES SHALL CONSIST OF CLASS 1 TYPE I-1 BITUMINOUS CONCRETE (HOT MIX ASPHALT)

**BITUMINOUS CONCRETE PAVEMENT**  
(NOT TO SCALE)

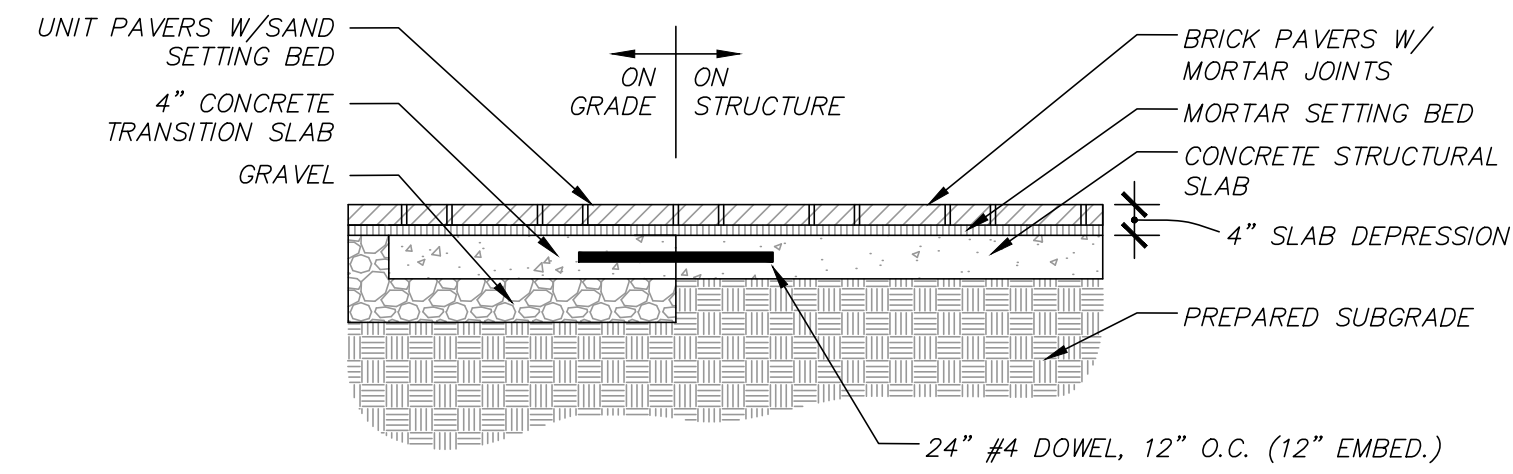


**GARAGE ENTRANCE/EXIT TRANSITION**  
(NOT TO SCALE)

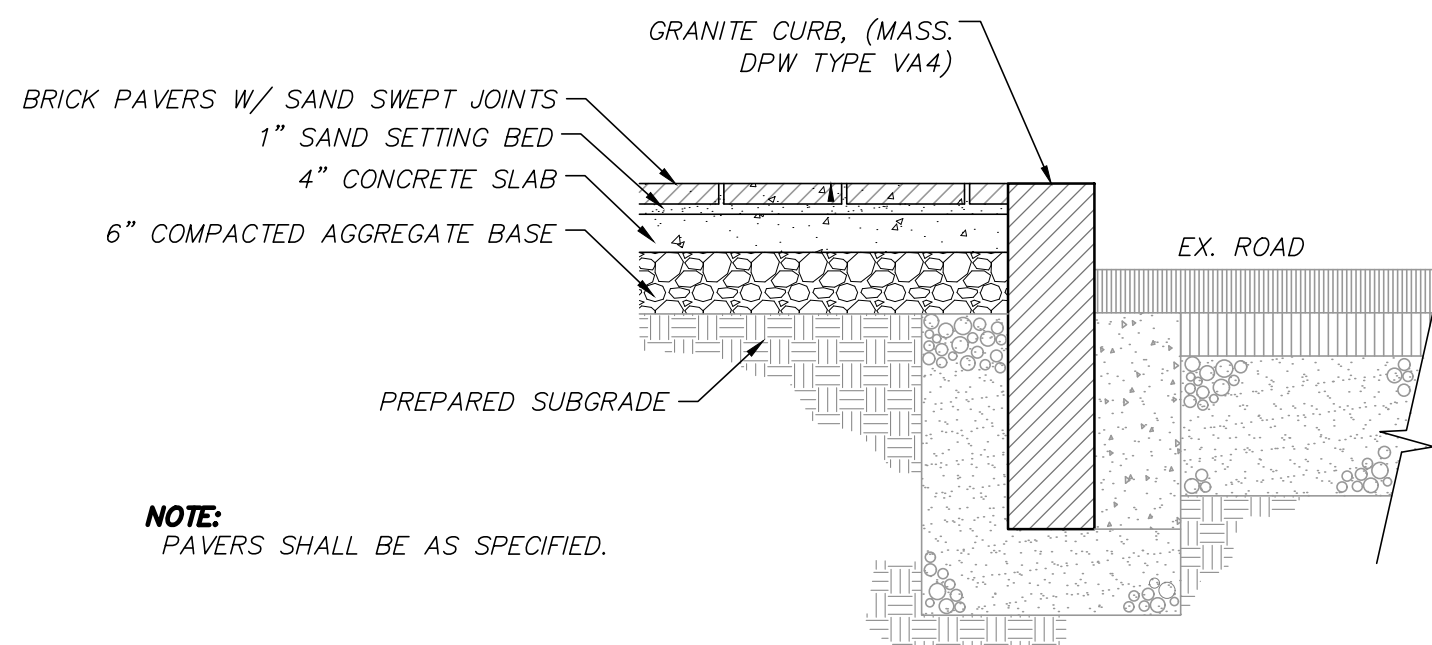


- NOTES:
- TYPICAL EXPANSION JOINT SPACING EVERY 20' O.C.
  - TYPICAL CONTROL JOINT SPACING EVERY 5' O.C.

**CONCRETE WALKWAY**  
(NOT TO SCALE)

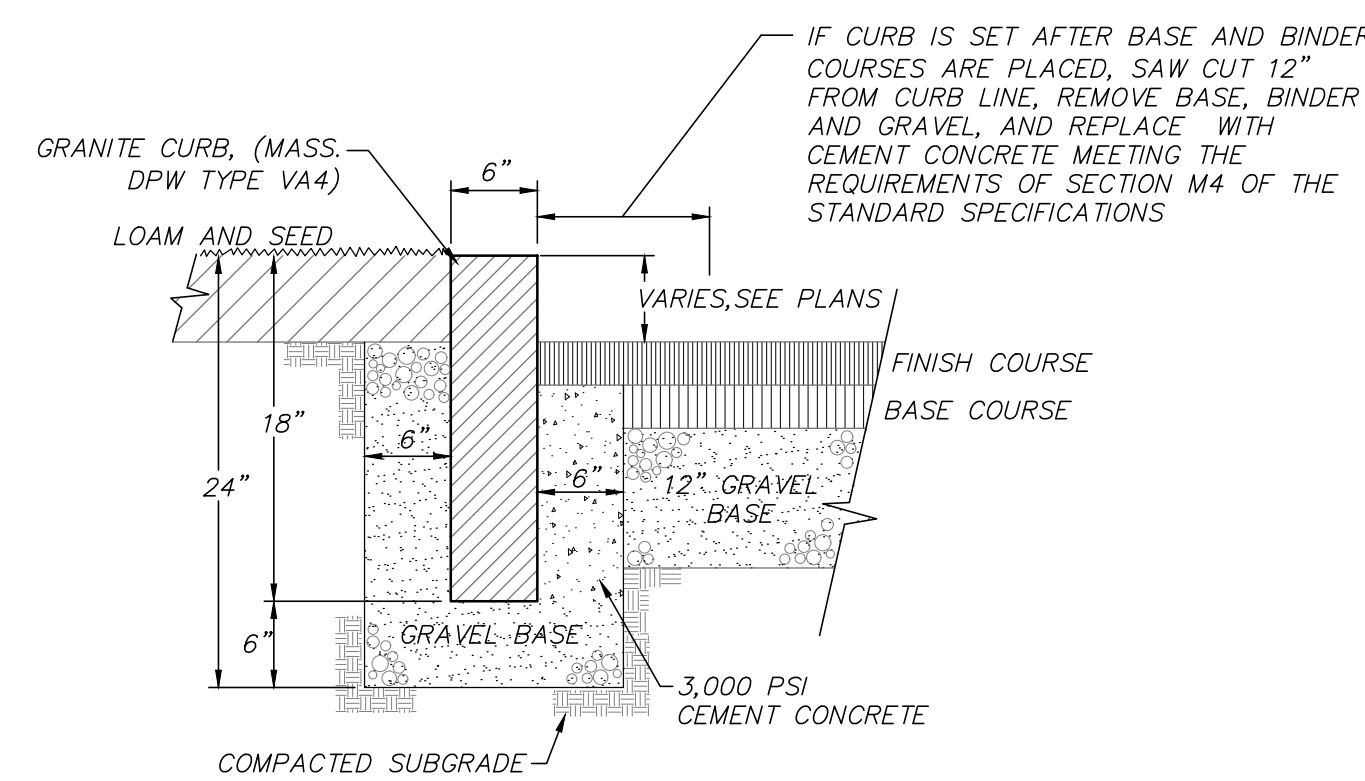


**BRICK PAVERS**  
(NOT TO SCALE)

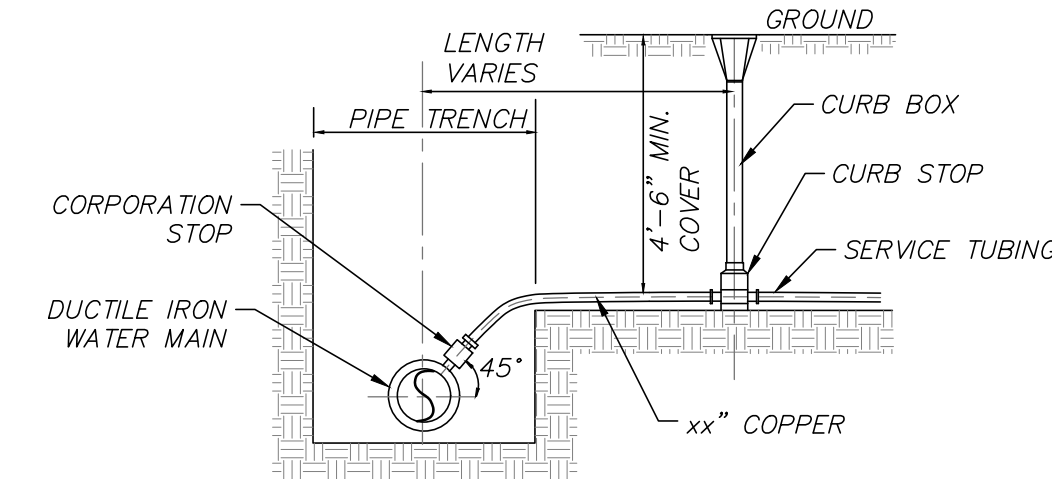


- NOTE:
- PAVERS SHALL BE AS SPECIFIED.

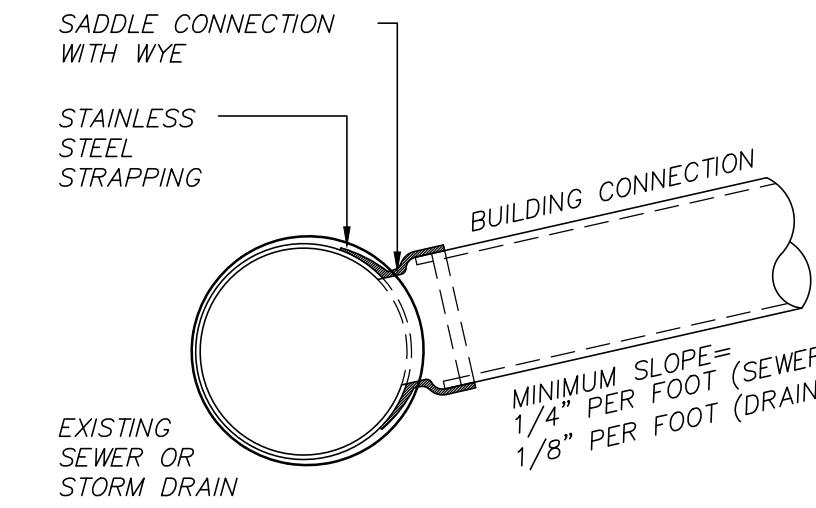
**BRICK PAVER SIDEWALK/CROSSWALK**  
(NOT TO SCALE)



**VERTICAL GRANITE CURB**  
(NOT TO SCALE)



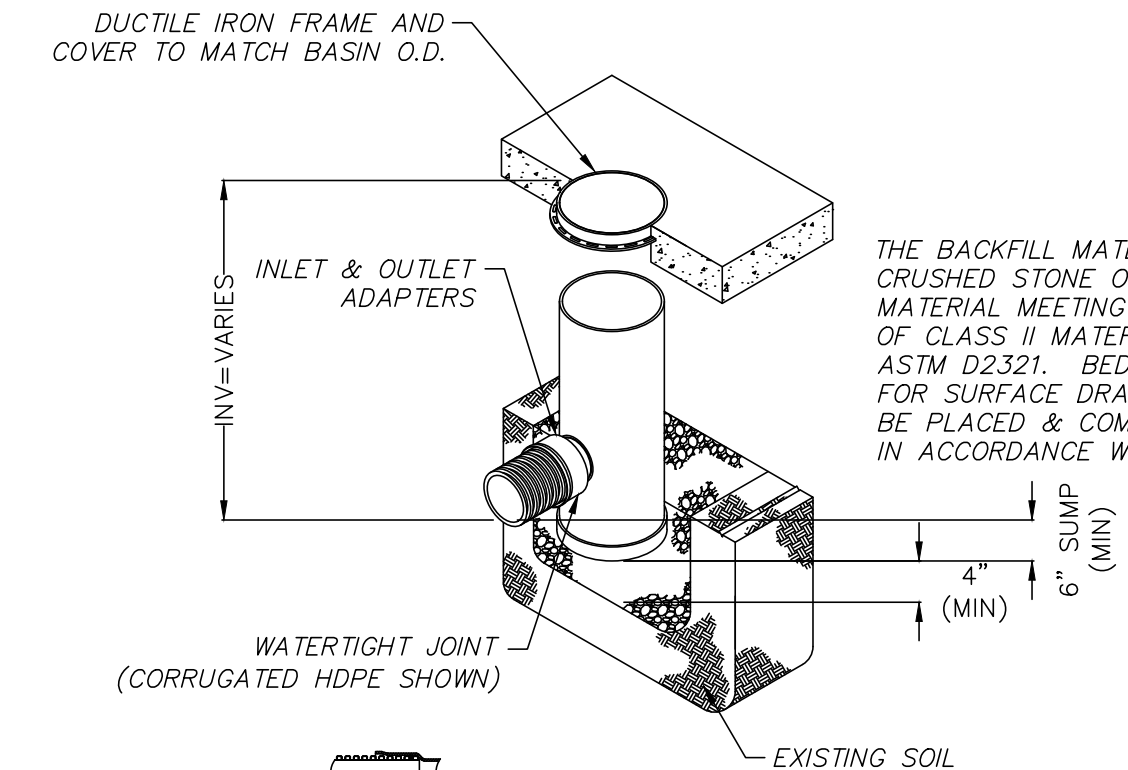
**TYPICAL WATER SERVICE**  
(NOT TO SCALE)



NOTES:

- FULL PVC OR IRON SADDLE MAY BE USED TO CONNECT TO EXISTING PVC, CLAY, CONCRETE, OR IRON PIPE.
- SADDLES MUST HAVE RUBBER GASKETS AND SHALL BE TIGHTENED WITH STRAPS. SADDLES WILL NOT BE CEMENTED ONTO THE PIPE.
- FULL WYE CONNECTION FITTINGS MAY BE USED.
- PIPE SHALL BE CUT TO CONFORM TO THE OPENING IN THE SADDLE.
- CONNECTIONS DIRECTLY INTO THE EXISTING PIPE WITHOUT A SADDLE OR FULL WYE FITTING ARE NOT ALLOWED.
- BUILDING CONNECTIONS SHALL BE BEDDED IN 3/4" MIN CRUSHED STONE TO AT LEAST HALF THE PIPE DIAMETER.

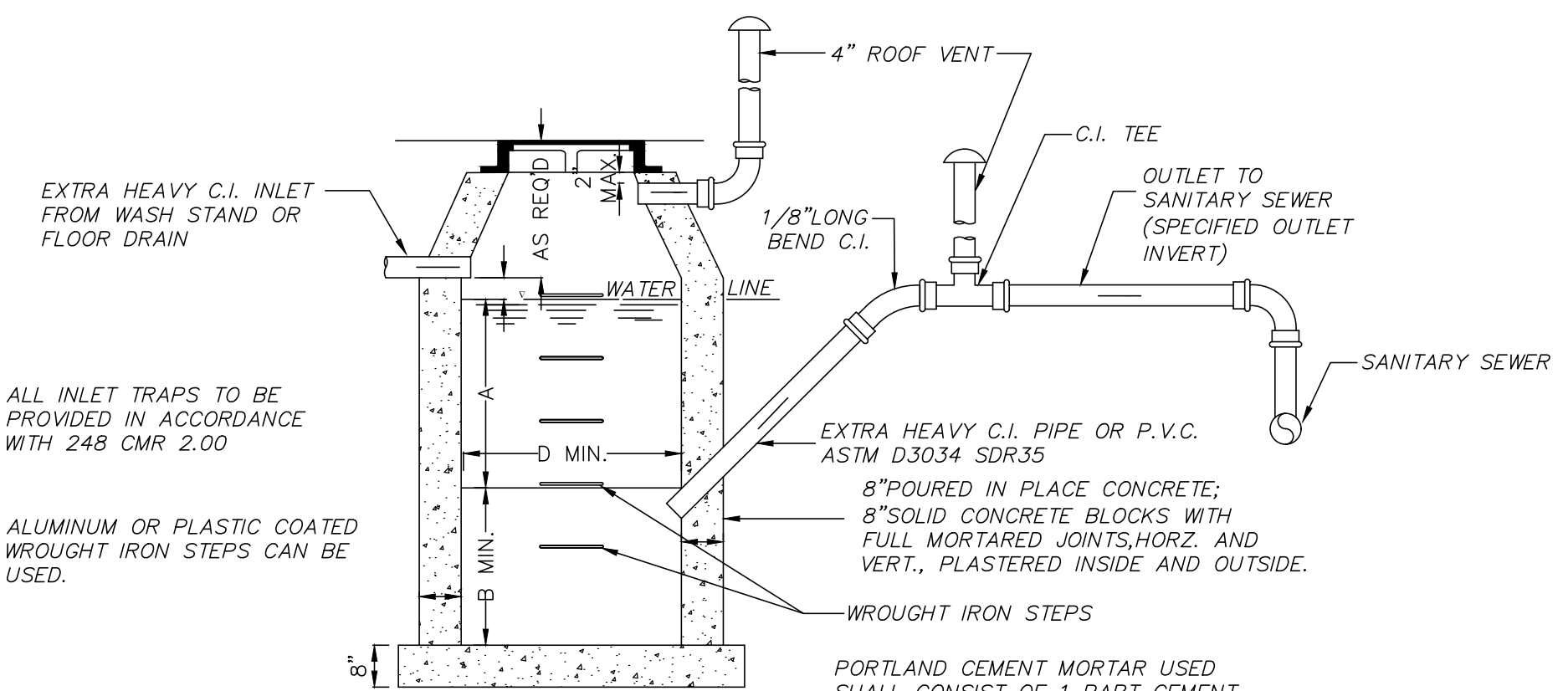
**SEWER CONNECTION DETAIL**  
(NOT TO SCALE)



NOTE:

- PROVIDE 24" NYLOPLAST DRAIN BASIN OR EQUAL. BASIN TO BE MANUFACTURED FROM PVC PIPE STOCK.
- FRAMES AND GRATES SHALL BE DUCTILE IRON AND COMPLY TO H-20 LOADING CAPACITY.
- DRAINAGE CONNECTION STUB JOINT TIGHTNESS SHALL CONFORM TO ASTM D3212 FOR CORRUGATED HDPE.
- SEE SITE PLAN FOR RIM AND INVERTS.

**PROPOSED YARD DRAIN**  
(NOT TO SCALE)



NOTES:

- FOR INLETS LARGER THAN 10" THE DESIGN AND DIMENSIONS WILL BE DETERMINED FOR EACH PARTICULAR CASE.
- PRE-CAST SEPARATORS ARE TO HAVE ALL SPECIFIED HOLES EITHER CORE-BORED OR CAST IN PLACE.
- REFER TO THE PLUMBING DRAWINGS FOR THE INSIDE DIMENSIONS OF THE OIL/WATER SEPARATOR.
- CEMENT BRICK, HOLLOW CONCRETE, OR CINDER BLOCK MASONRY MUST NOT BE USED.
- ALL OIL AND GASOLINE MUST BE REMOVED BEFORE CLEANING OUT THE BASIN, AND MUST NOT BE DISCHARGED INTO THE SEWER THROUGH OTHER FIXTURES.

**OIL/WATER SEPARATOR**  
(NOT TO SCALE)

NOTE:

THIS DETAIL IS FOR SCHEMATIC PURPOSES ONLY. THE OIL/WATER SEPARATOR SHALL BE DESIGNED BY THE PLUMBING ENGINEER.

REVISIONS	DATE	DESCRIPTION
REVISED SUBMISSION	05/20/20	NO CHANGES THIS SHEET
PEER REVIEW COMMENTS	02/06/20	01/20/20

93 STATE STREET  
SITE DETAILS  
LOCATED IN  
NEWBURYPORT, MASSACHUSETTS  
(ESSEX COUNTY)  
PREPARED FOR  
INSTITUTION FOR SAVINGS

**MERIDIAN ASSOCIATES**  
500 CUMMINGS CENTER, SUITE 5950  
BEVERLY, MASSACHUSETTS 01915  
TELEPHONE: (978) 299-4447  
WWW.MERIDIANASSOC.COM

69 MILK STREET, SUITE 302  
WESTBOROUGH, MASSACHUSETTS 01581  
TELEPHONE: (508) 871-7030

CHECKED BY: CEW  
DESIGNED BY: NB

DATE:	JANUARY 8, 2020
SCALE:	AS NOTED
SHEET No.	7 OF 7
PROJECT No.	6215

FOR PERMITTING ONLY  
NOT FOR CONSTRUCTION