

# Institution for Savings Office Addition

93 STATE STREET  
NEWBURYPORT, MA 01950

FIRST FLOOR PLAN

09/30/2020

**ARC** Architectural Resources Cambridge  
501 Boylston Street, Suite 4101, Boston, MA 02116  
617.547.2200 [www.arcusa.com](http://www.arcusa.com)

A101

SCALE: 1/8" = 1'-0"

MARK W. GRIFFIN  
DEED BOOK 32717,



# Institution for Savings Office Addition

93 STATE STREET  
NEWBURYPORT, MA 01950

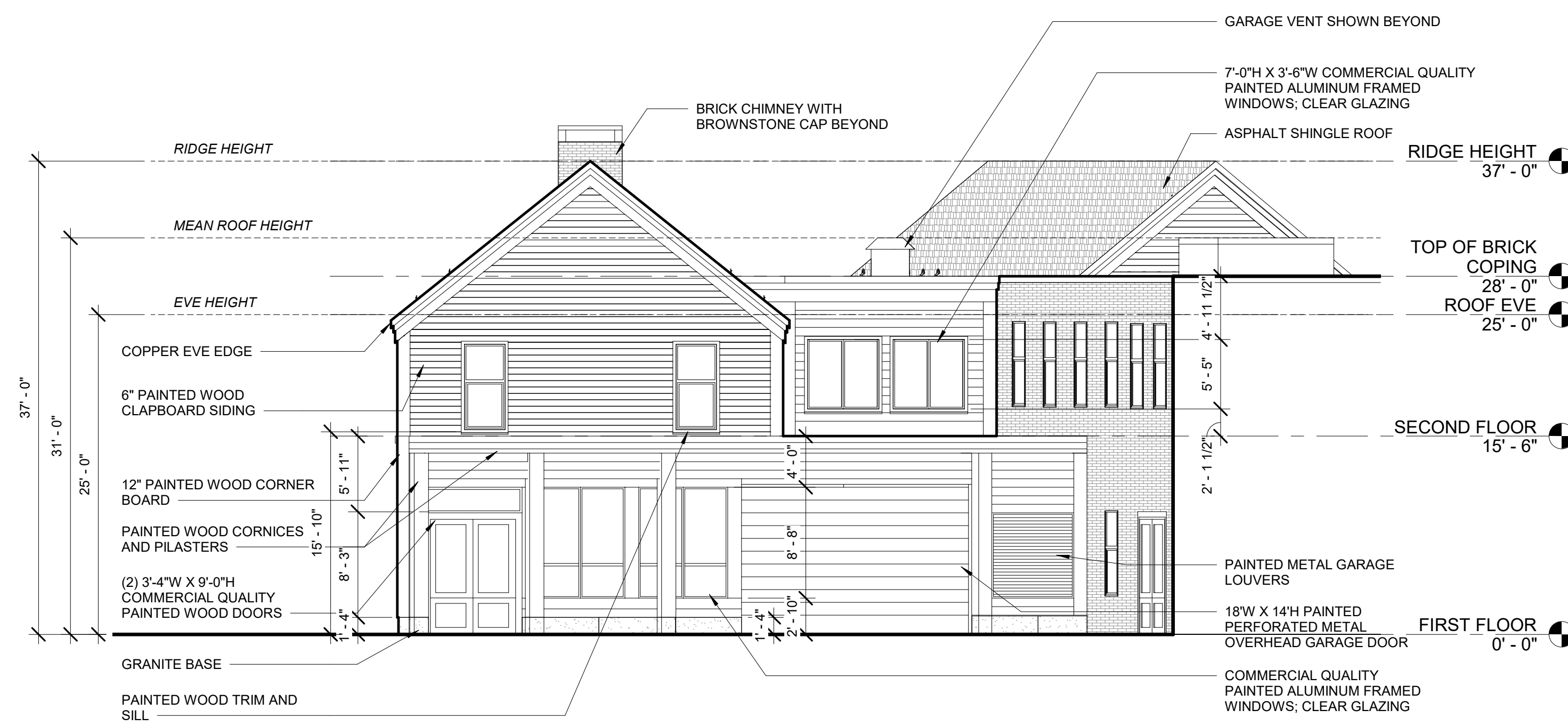
SECOND FLOOR PLAN

09/30/2020

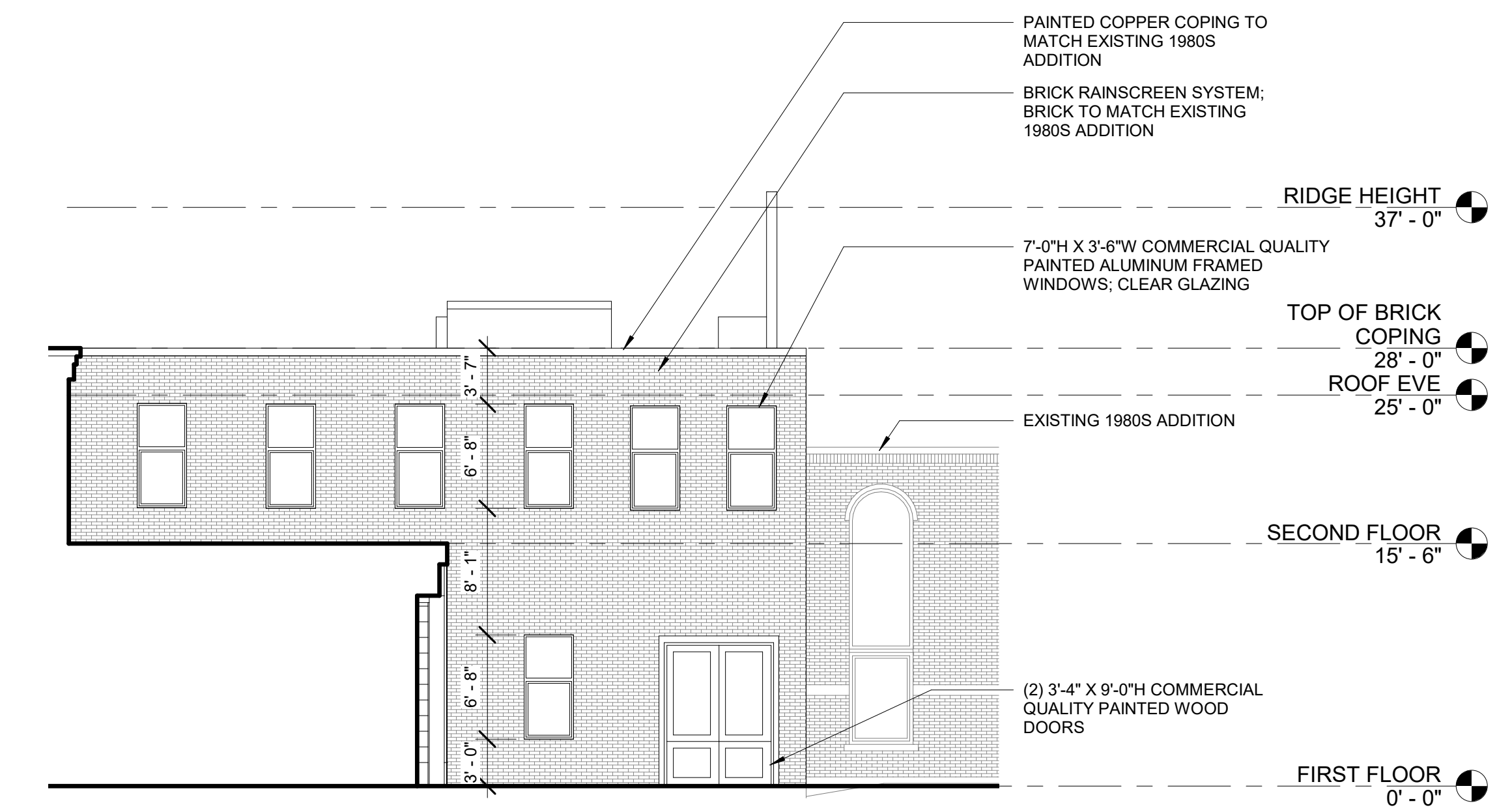
A102

SCALE: 1/8" = 1'-0"

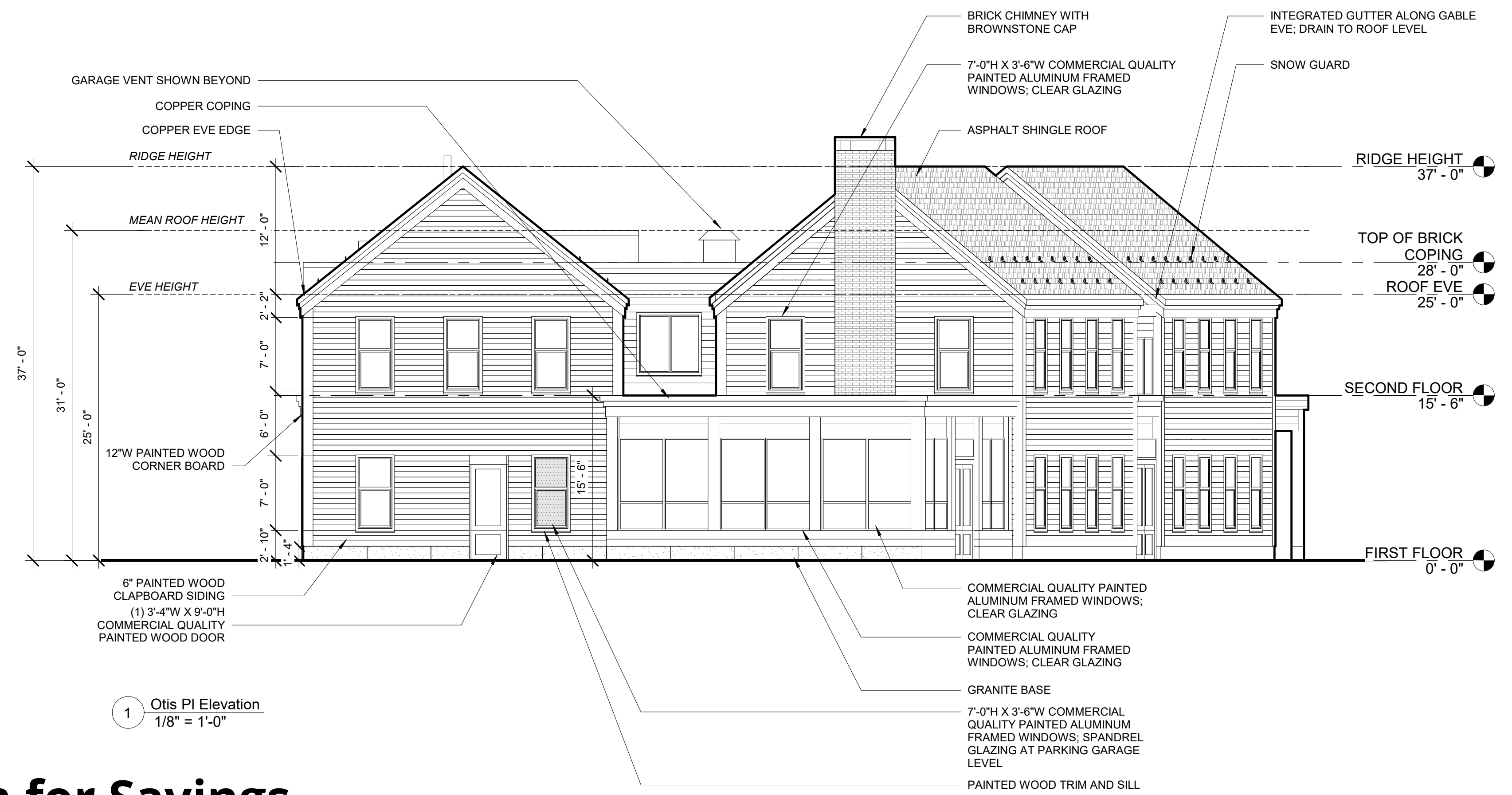
MARK W. GRIFFIN  
DEED BOOK 32717,



3 State St Elevation  
1/8" = 1'-0"



2 Prospect St Elevation  
1/8" = 1'-0"



1 Otis Pl Elevation  
1/8" = 1'-0"

# Institution for Savings Office Addition

93 STATE STREET  
NEWBURYPORT, MA 01950

BUILDING ELEVATIONS

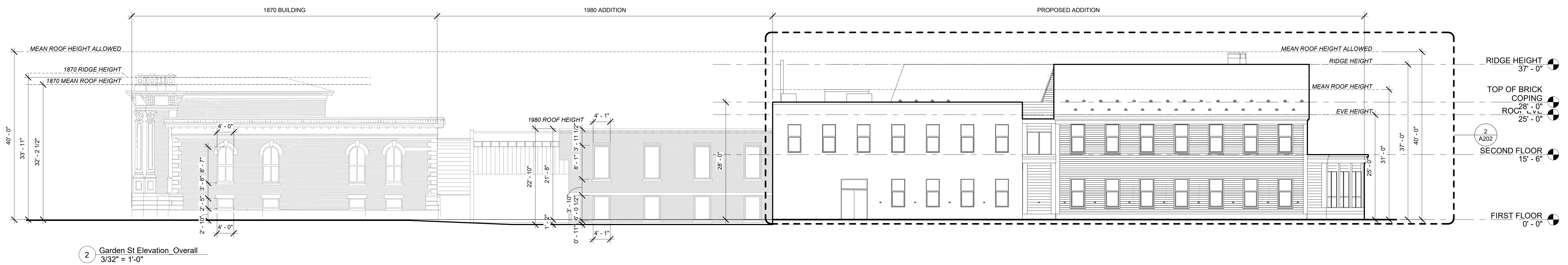
10/27/2020

**ARC** Architectural Resources Cambridge  
501 Boylston Street, Suite 4101, Boston, MA 02116  
617.547.2200 [www.arcusa.com](http://www.arcusa.com)

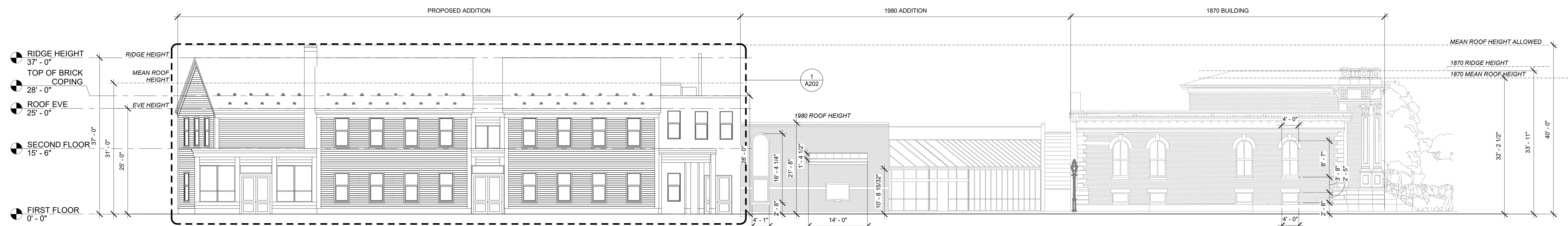
A203

SCALE: 1/8" = 1'-0"





2 Garden St Elevation Overall  
3/32" = 1'-0"



1 Prospect St Elevation Overall  
3/32" = 1'-0"

# Institution for Savings Office Addition

10/27/2020

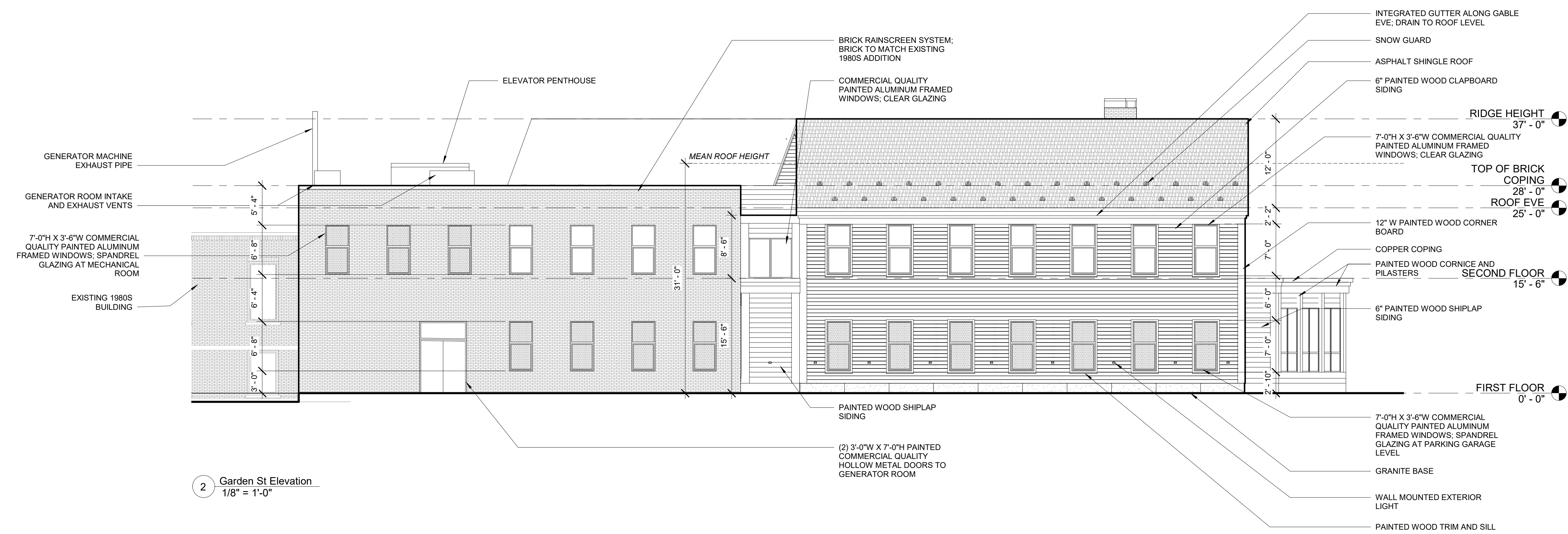
BUILDING ELEVATIONS

**ARC** Architectural Resources Cambridge  
501 Boylston Street, Suite 4101, Boston, MA 02116  
617.547.2200 [www.arcusa.com](http://www.arcusa.com)

93 STATE STREET  
NEWBURYPORT, MA 01950

A201

SCALE: 3/32" = 1'-0"



2 Garden St Elevation  
1/8" = 1'-0"



1 Prospect St Elevation  
1/8" = 1'-0"

# Institution for Savings Office Addition

BUILDING ELEVATIONS

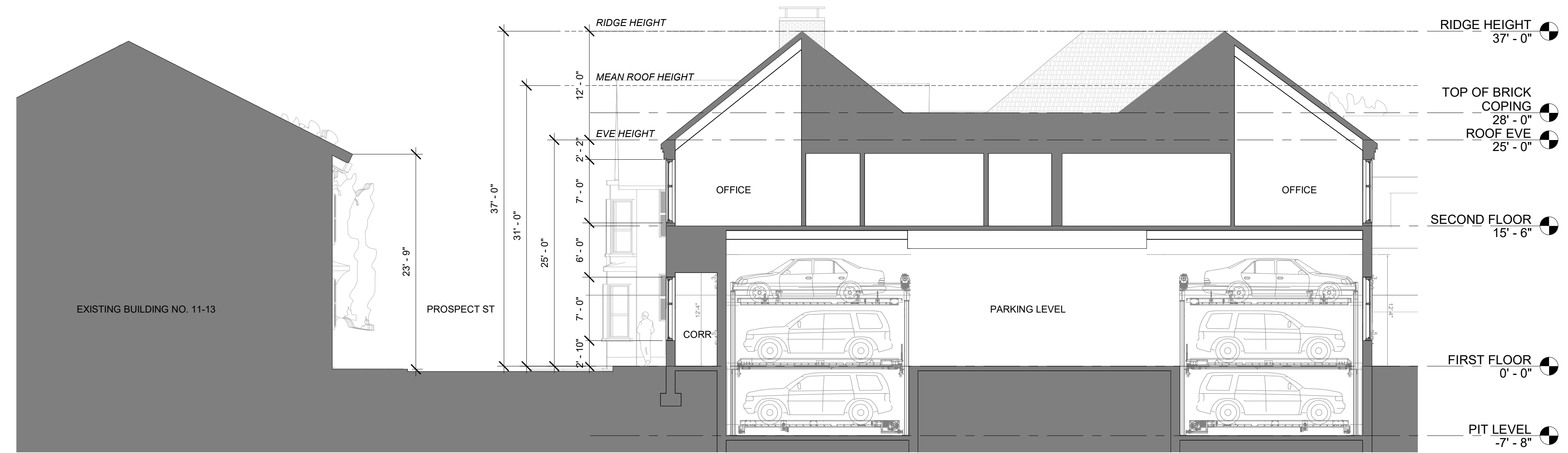
10/27/2020

**ARC** Architectural Resources Cambridge  
501 Boylston Street, Suite 4101, Boston, MA 02116  
617.547.2200 [www.arcusa.com](http://www.arcusa.com)

93 STATE STREET  
NEWBURYPORT, MA 01950

A202

SCALE: 1/8" = 1'-0"

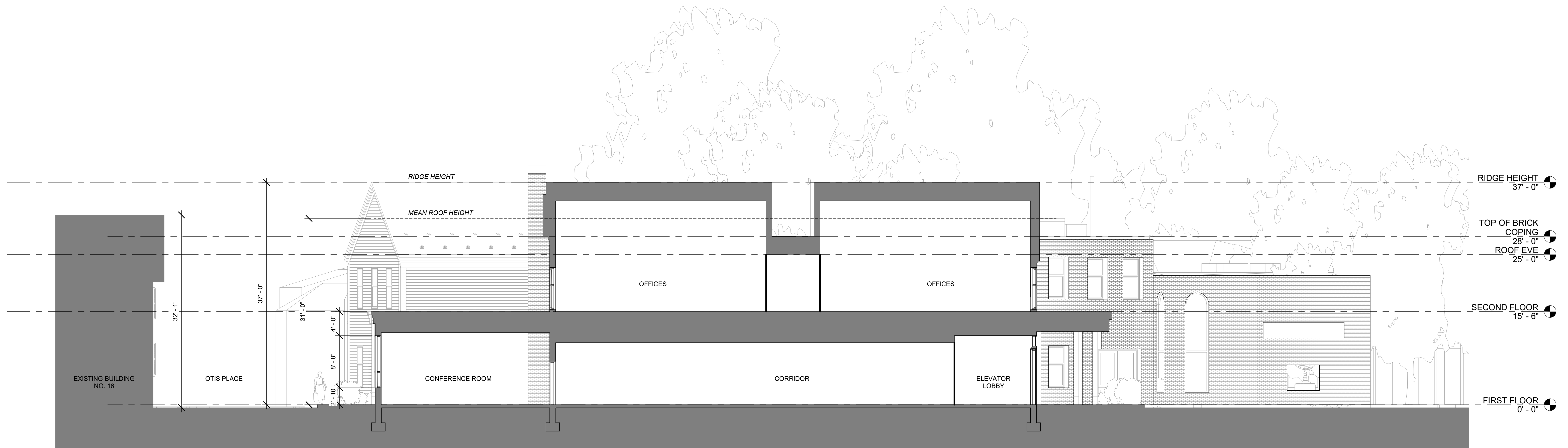


1 Prospect St Building Section  
1/8" = 1'-0"

# Institution for Savings Office Addition

09/30/2020

BUILDING SECTIONS



1 Otis Place Building Section  
1/8" = 1'-0"

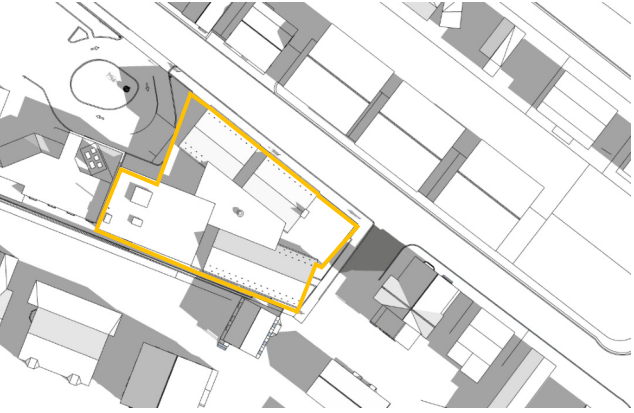
# Institution for Savings Office Addition

09/30/2020

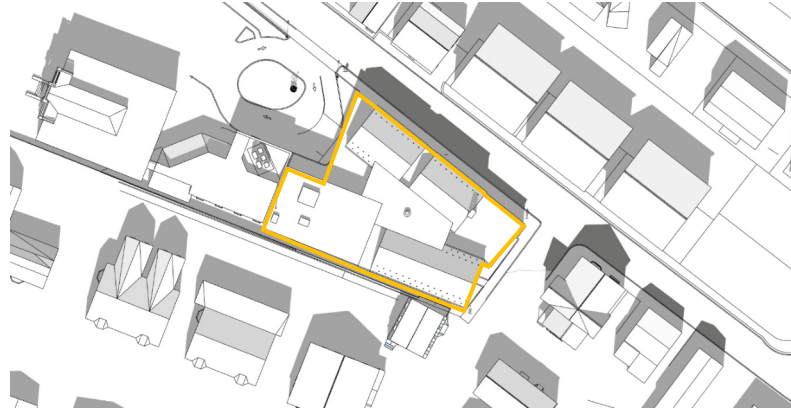
BUILDING SECTIONS



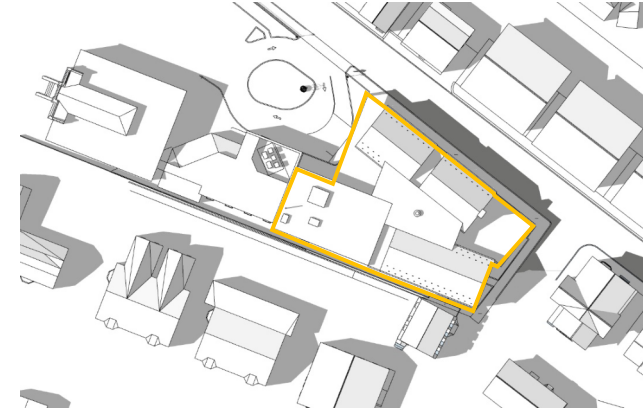
Vernal Equinox  
March 21



9AM



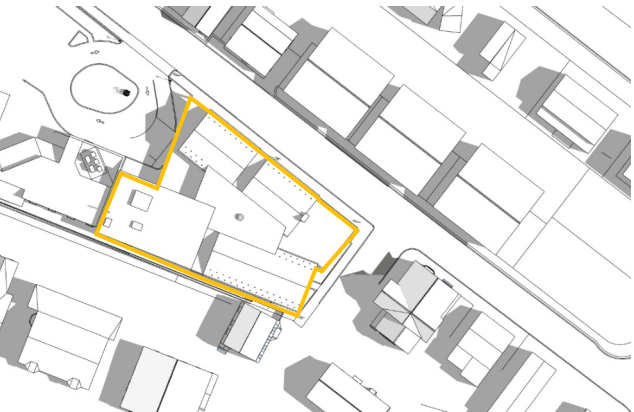
12PM



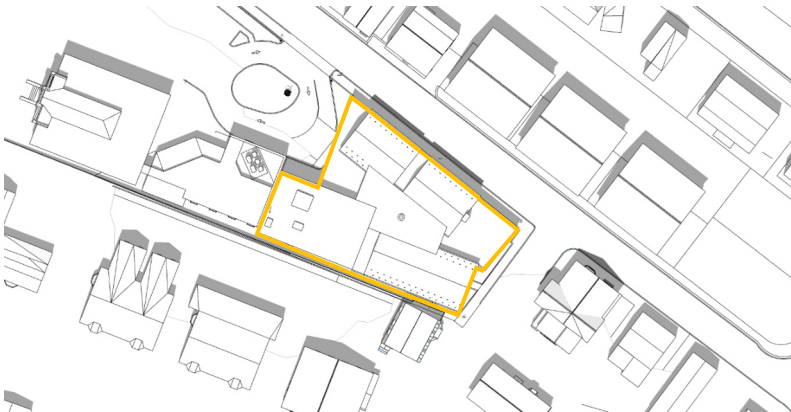
3PM

# Summer Solstice

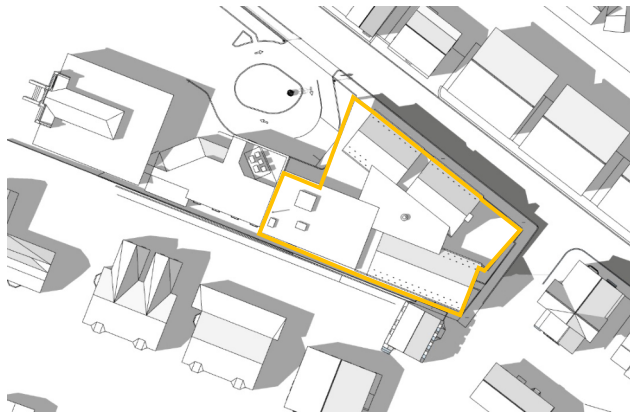
June 21



9AM

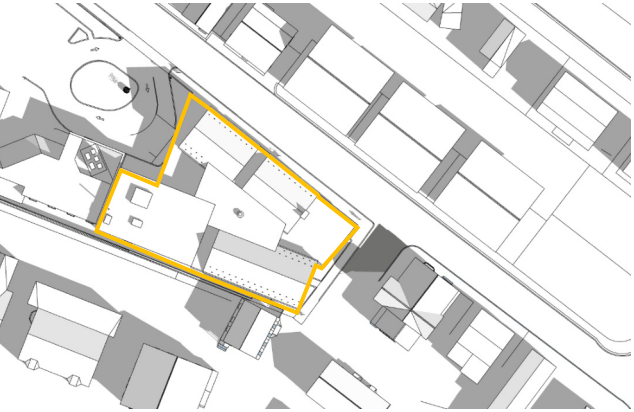


12PM

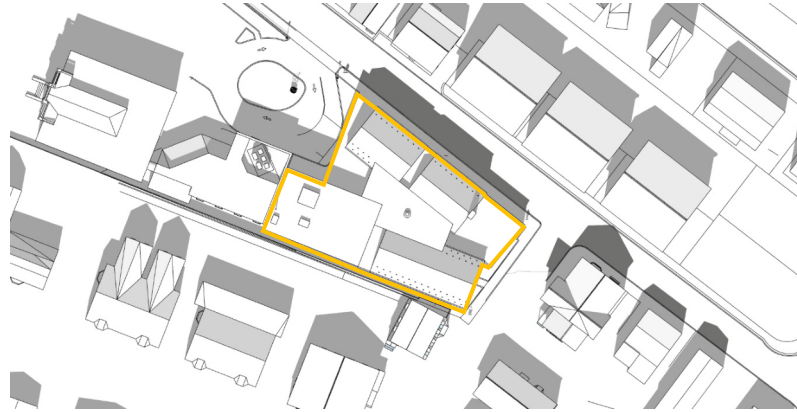


3PM

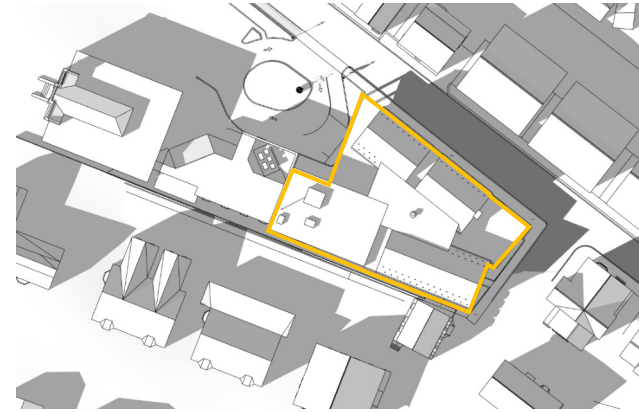
Autumnal Equinox  
September 21



9AM



12PM

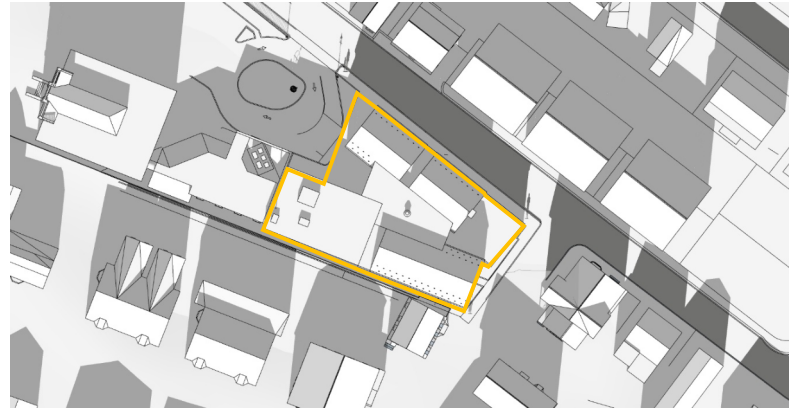


3PM

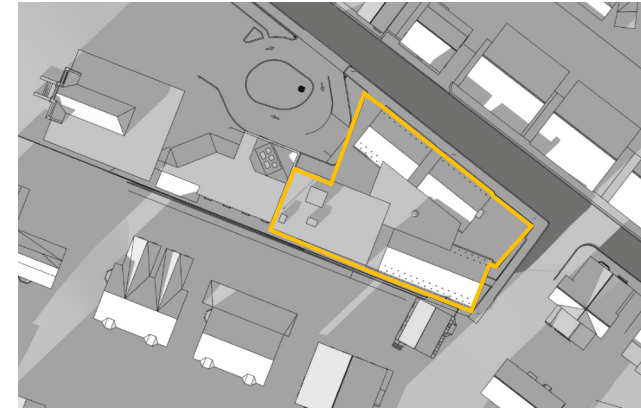
Winter Solstice  
December 21



9AM



12PM



3PM

