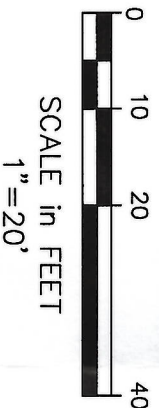
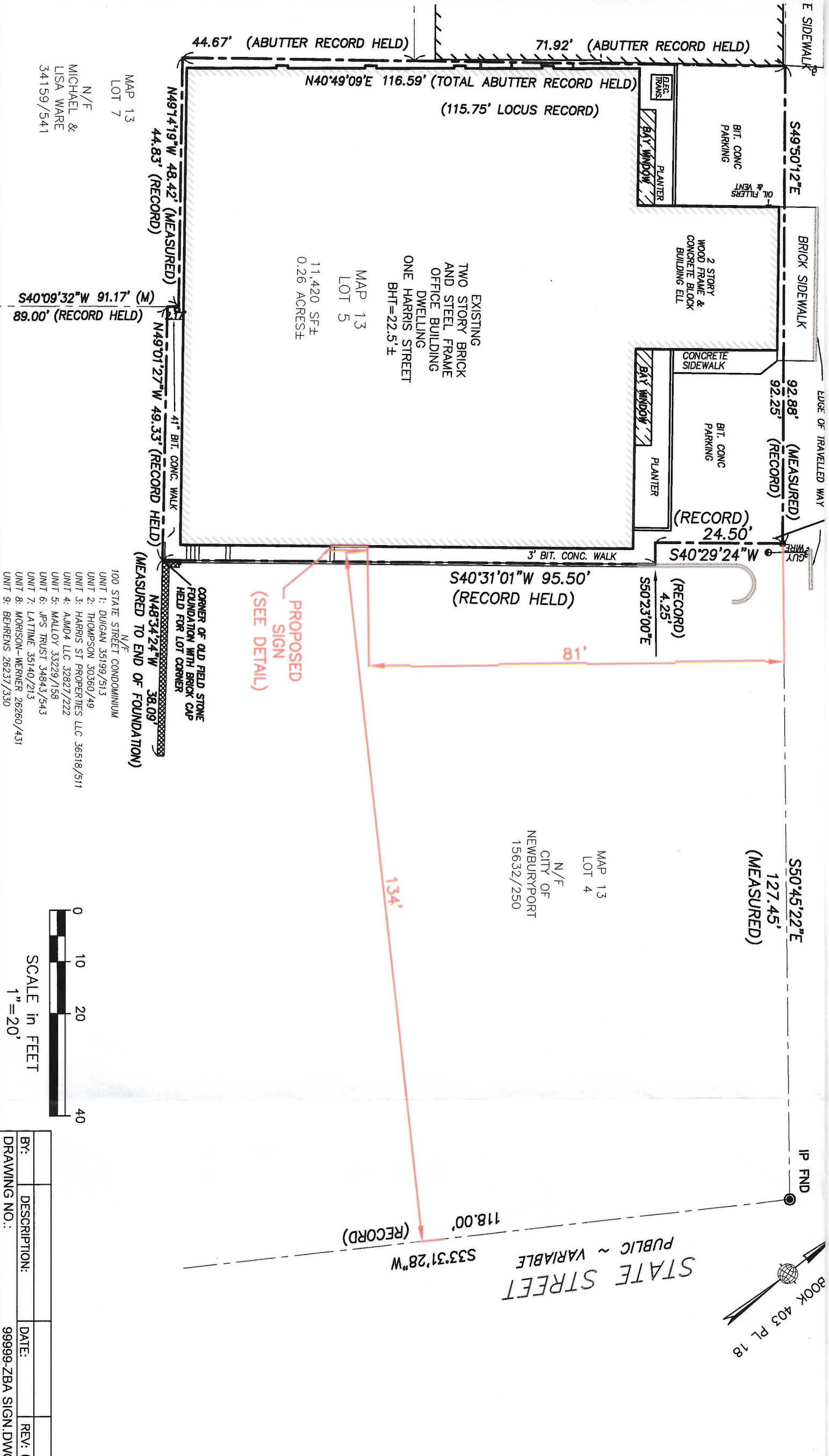


REFERENCES:

- 1. ESSEX COUNTY REGISTRY
- BK 36518 PG 511 (DEED)
- BK 403 PL 18 (PLAN DATED

NOTES:

- 1. THE PURPOSE OF THIS PLAN BOARD APPROVAL FOR THE PL SIGN ON THE EXTERIOR OF TH
- 2. ABUTTER'S REFERENCES FR ASSESSOR'S



BY:	DESCRIPTION:	DATE:	REV: 0
DRAWING NO.:		99999-ZBA SIGN.DWG	

PROPOSED ONE H

NEWBURYPORT
HARRIS ST

18 CENTER STREET
SUITE 1
NEWBURYPORT, MA
01950

HA
ASS

N/F
MICHAEL &
LISA WARE
34159/541

MAP 13
LOT 7

EXISTING
TWO STORY BRICK
AND STEEL FRAME
OFFICE BUILDING
DWELLING
ONE HARRIS STREET
BHT=22.5'±

MAP 13
LOT 5
11,420 SF±
0.26 ACRES±

MAP 13
LOT 4
N/F
CITY OF
NEWBURYPORT
15632/250

- N/F
100 STATE STREET CONDOMINIUM
- UNIT 1: DUGAN 35199/513
 - UNIT 2: THOMPSON 30360/49
 - UNIT 3: HARRIS ST PROPERTIES LLC 36518/511
 - UNIT 4: AAMD4 LLC 32827/222
 - UNIT 5: MALLOY 33229/158
 - UNIT 6: JPS TRUST 34843/543
 - UNIT 7: LATTIME 35140/213
 - UNIT 8: MORISON-WERNER 26260/431
 - UNIT 9: BEHRENS 26237/330