

NHC

1. CURRENT PROGRESS ON THE IMPROVEMENTS
TO THE KEEPERS HOUSE YARD

2. PROPOSED YARD IMPROVEMENTS TO
THE KEEPERS HOUSE YARD

CHARLES GRIFFIN
OLD GAOL
NEWBURYPORT

MAY 27 2021 REVISED



GAOL ADDITION EXTERIOR

GREEK TEMPLE
600 BC - 200 BC

DYSTYLE IN ANTIS

ALTAR in FRONT

SET IN A GROVE

GAOL ADDITION INTERIOR





THE THREE PIECES THAT WERE REMOVED WERE REESTABLISHED ADJACENT TO WHERE THEY WERE REMOVED AS AN EXHIBIT TO HOW THEY ORIGINALLY FUNCTIONED



IN SWINGING FRENCH
CASEMENTS
RECESSED
FROM FACE OF WALL
TO SHOW BEAUTY OF
THE WALLS



**KEEPERS
HOUSE**

**SHADE GARDEN
GAOL**

FUTURE PORCH

STABLE

GAOL YARD

ADDITION





STABLE

FUTURE
PORCHES

SHADE GARDEN

KEEPERS
HOUSE

UPPER FLAT
LAWN

LAWN

PILLOW

GAOL
YARD

GAOL

VERNON STREET

5
f.
RES

LOT 4
+/- 7,279 s.f.
+/- 0.167 ACRES

KEEPERS HOUSE

SHADE GARDEN

GAOL

AUBURN STREET

LOT 4 = KEEPERS HOUSE

1

CURRENT PROGRESS
ON
KEEPERS HOUSE
LANDSCAPING



THE 156' LONG "PILLOW" LAWN



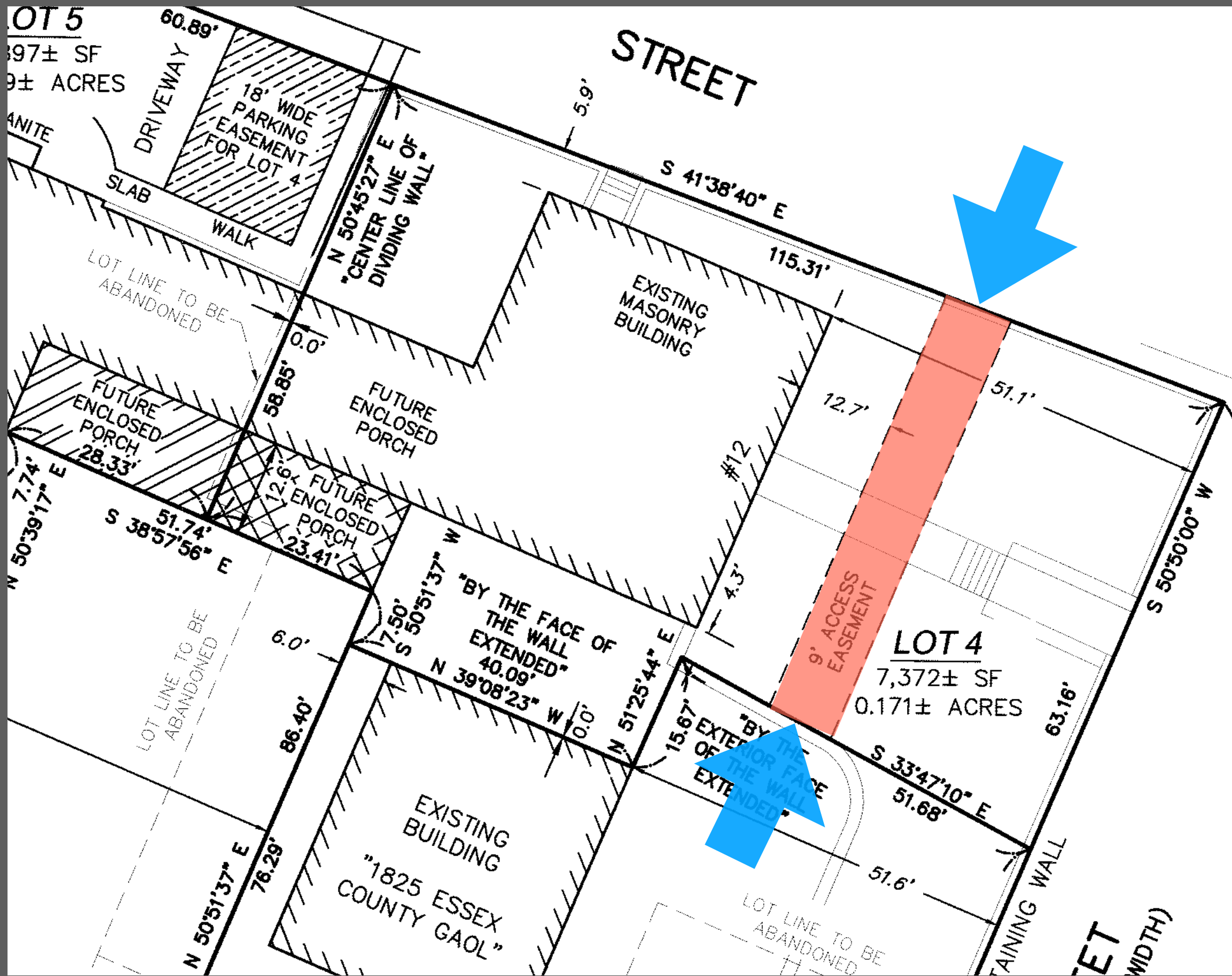
VIEW OF ENTIRE "PILLOW"
LAWN FROM ISLAND
156' LONG X 21' WIDE



“UPPER FLAT “LAWN AREA IN LIGHT BLUE



UPPER FLAT YARD ALMOST NOT VISIBLE



VEHICULAR ACCESS EASEMENT



vehicular
access
easement

mocked up in brown



SOURCING GRANITE FOR ACCESS DRIVE



VIEW FROM AUBURN STREET
UPPER FLAT YARD IN BLUE



MOCK UP AND FINISHED POSITION OF GRANITE BLOCKS



PATIO, GRANITE AND SIDEWALKS IN PLACE

2

PROPOSED IMPROVEMENTS TO KEEPERS HOUSE YARD

PROPOSED IMPROVEMENTS

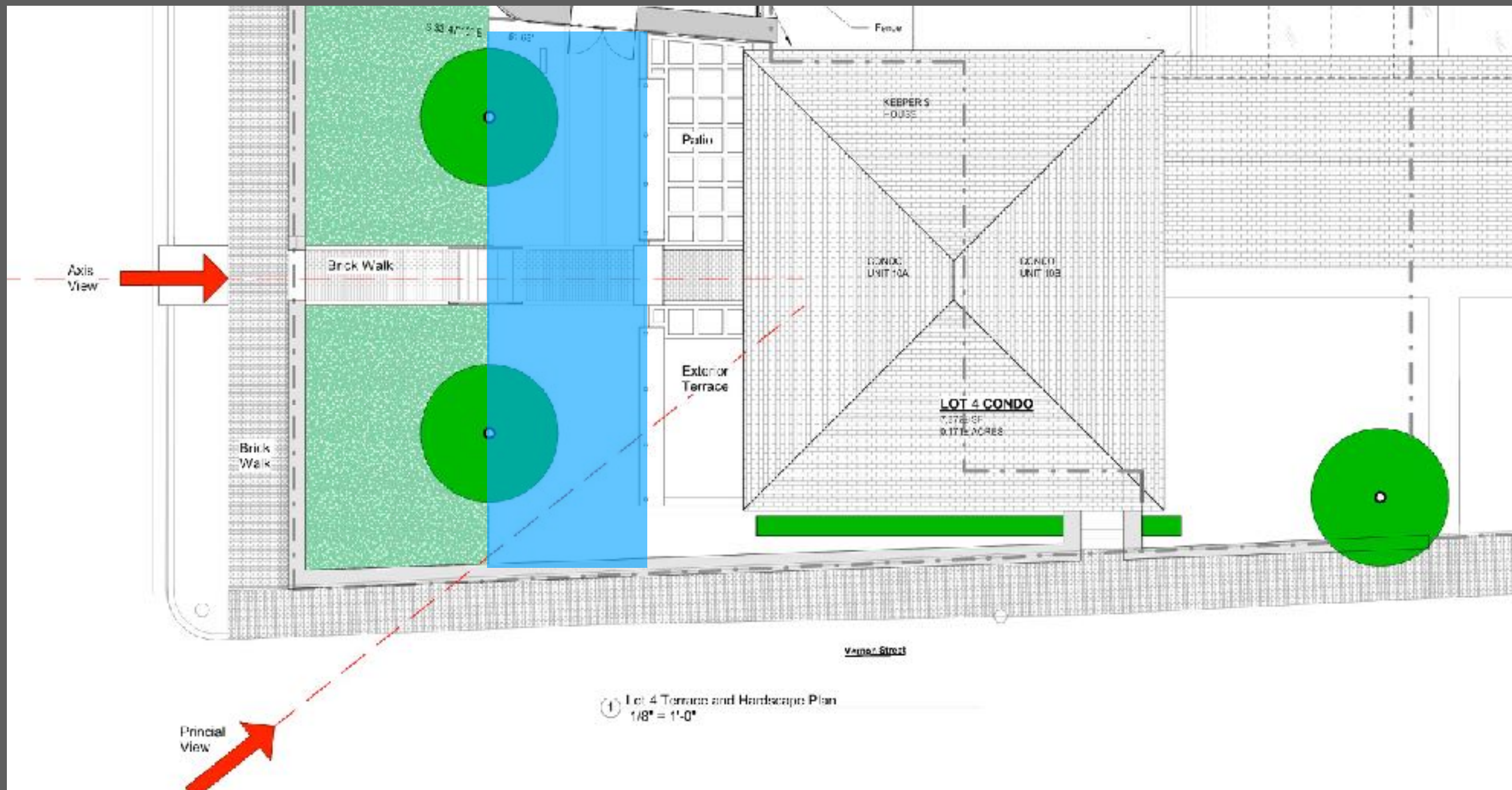
- 5' square trellises
- 2 over story trees on Auburn St. side
- 1 over story tree on Vernon (north side)
- hedge to cover foundation along Vernon
- two hand rails at steps
- sidewalk extension to curb on Auburn
- granite address post
- coupled with preservation of:
 - Gaol shade garden
 - granite connector wall



RENDERING FROM VERNON STREET
SHOWN WITH APPROVED DRIVEWAY TO GAOL



WALL, LIGHTS & TREES ALIGN



TREES and HEDGE NEEDED

DO THE TREES BLOCK THE PROMINENT VIEW?



RENDERING of the PROMINENT PUBLIC VIEW
NO TREE TRUNKS OBSCURE THE VIEW



RENDERING of the AXIS VIEW
NO TREE TRUNKS OBSCURE THE VIEW

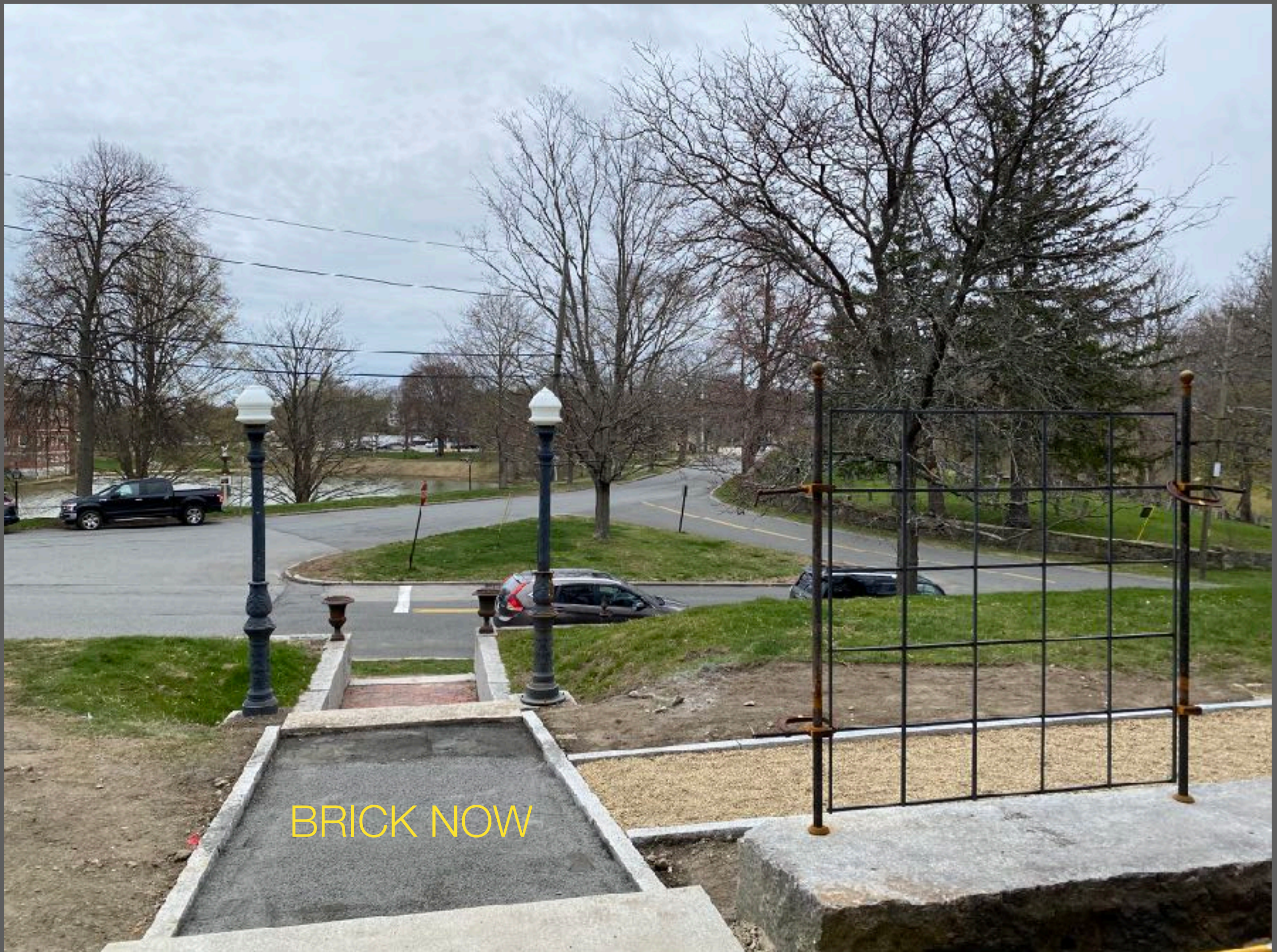


ALL GATES ARE A FRAMEWORK OF SQUARES
MIMICS GAOL WINDOW IRON WORK



CURRENTLY


12" X 12" TRELLIS
ARE USED
AT 3 VERNON



BRICK NOW

MOCK UP OF 5 ' SQUARE TRELLIS AND 1" POSTS FROM GAOL



LEFT TWO TRELLIS SQUARES ARE
MOCKED UP ABOVE THE ADDED RED LINE 

VIEW FROM LAWN



VIEW OF MOCK UP (ON LEFT) FROM STREET



VIEW OF MOCK UP FROM BARTLET MALL



LANDSCAPE BADLY LACKING
AT KEEPERS HOUSE



CIRCA 2007



1987

TALL "OVER STORY" WILLOW TREES
GIVE SHADE. ADD INTEREST TO BUILDINGS

*From Tavern
to
Courthouse*



ARCHITECTURE & RITUAL
IN AMERICAN LAW,
1658-1860

Martha J. McNamara



VISIT BY MARTHA McNAMARA
8 YEARS BEFORE BOOK PUBLISHED



PUT BULLFINCH BACK
INTO THE COURTHOUSE

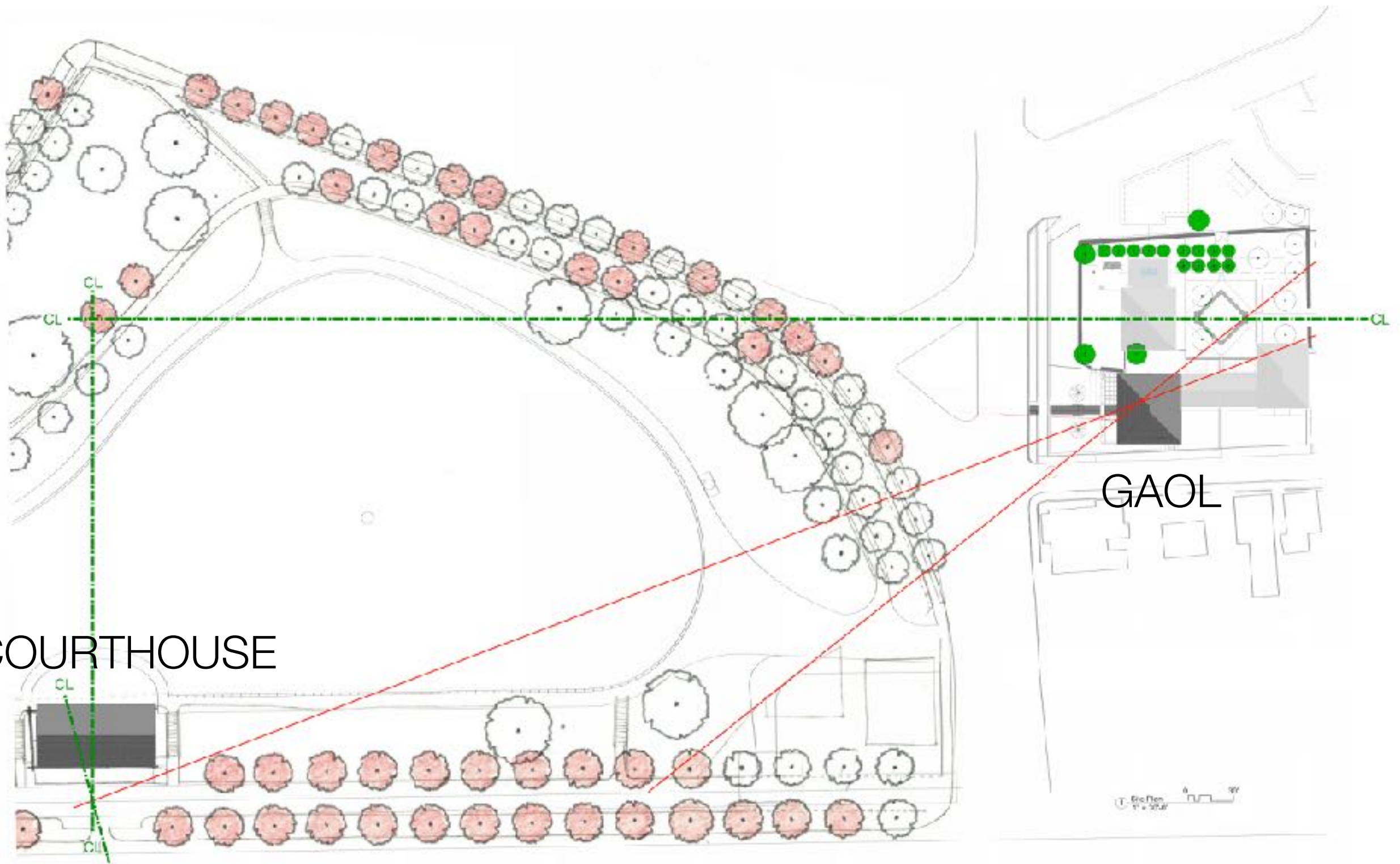


COURTHOUSE and
GAOL CONNECTION

COURTHOUSE

GAOL

“CONNECTION” IN RED
REAL AXIS IN GREEN





PROMINENT PUBLIC VIEW



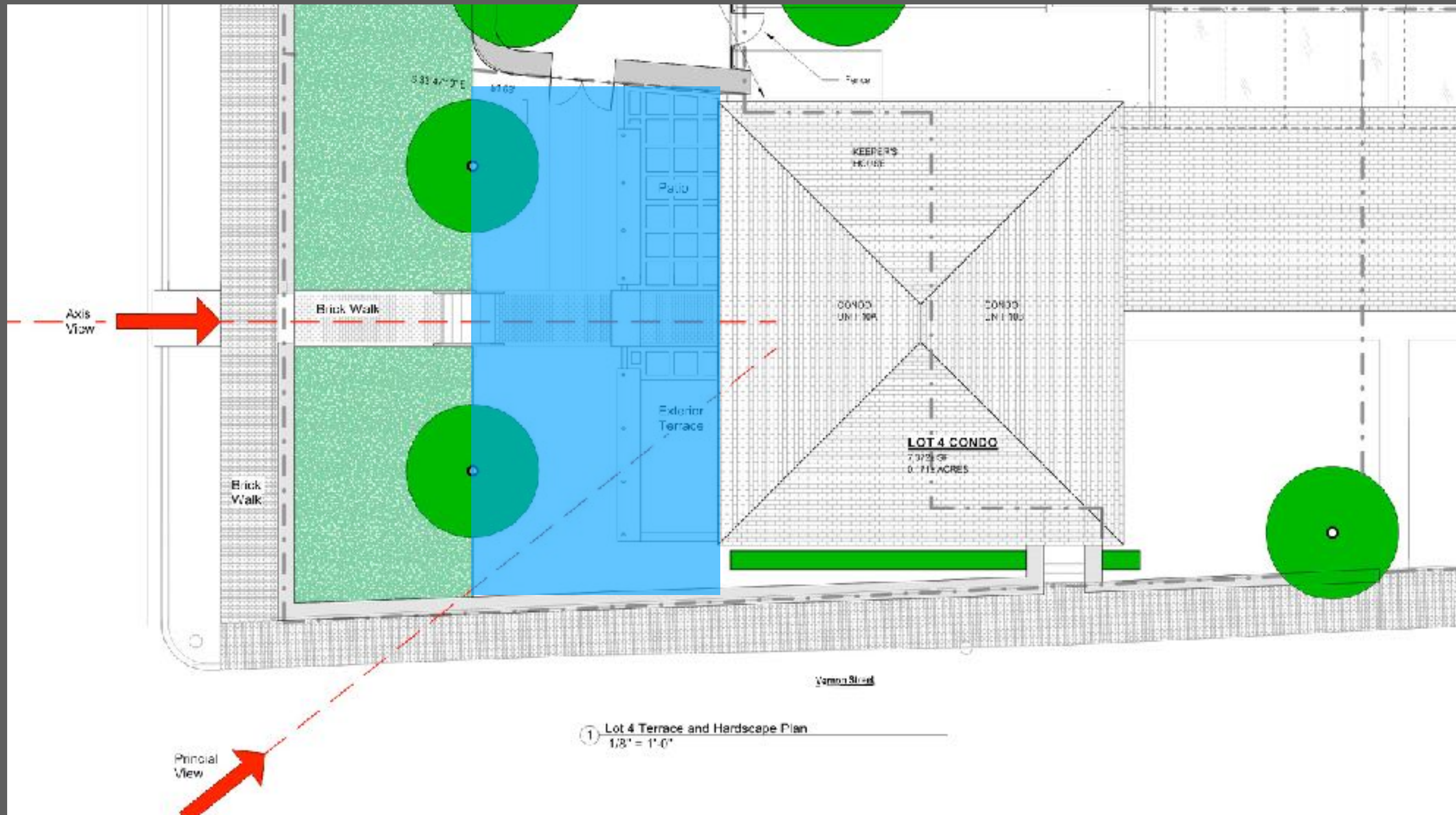
CIRCA 1996

PROMINENT VIEW



PROMINENT PUBLIC VIEW





TREES and HEDGE NEEDED

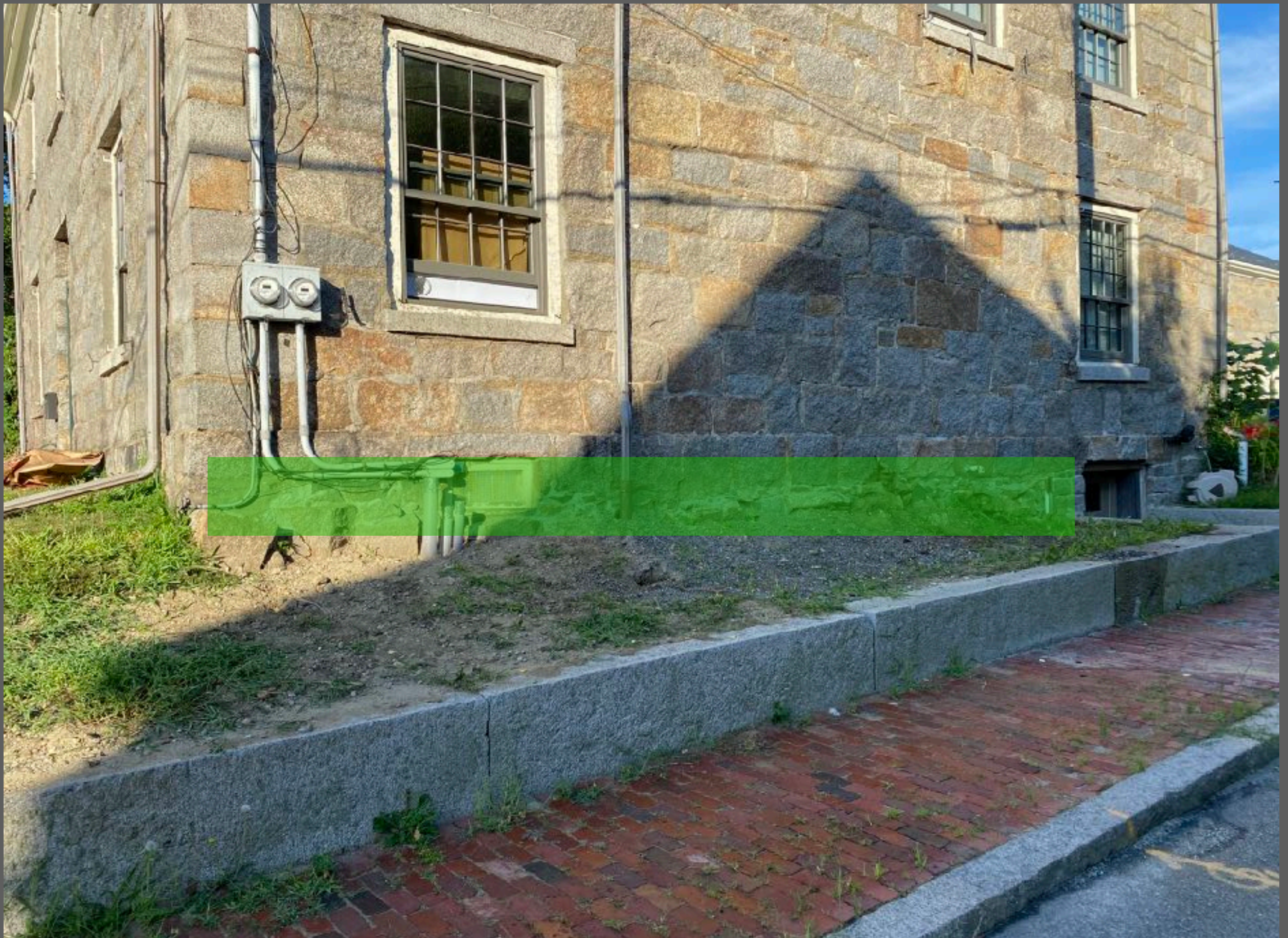
DO THE TREES BLOCK THE PROMINENT VIEW?



RENDERING of the PROMINENT PUBLIC VIEW
NO TREE TRUNKS OBSCURE THE VIEW



RENDERING of the AXIS VIEW
NO TREE TRUNKS OBSCURE THE VIEW



NEEDS A HEDGE TO HIDE THE FOUNDATION



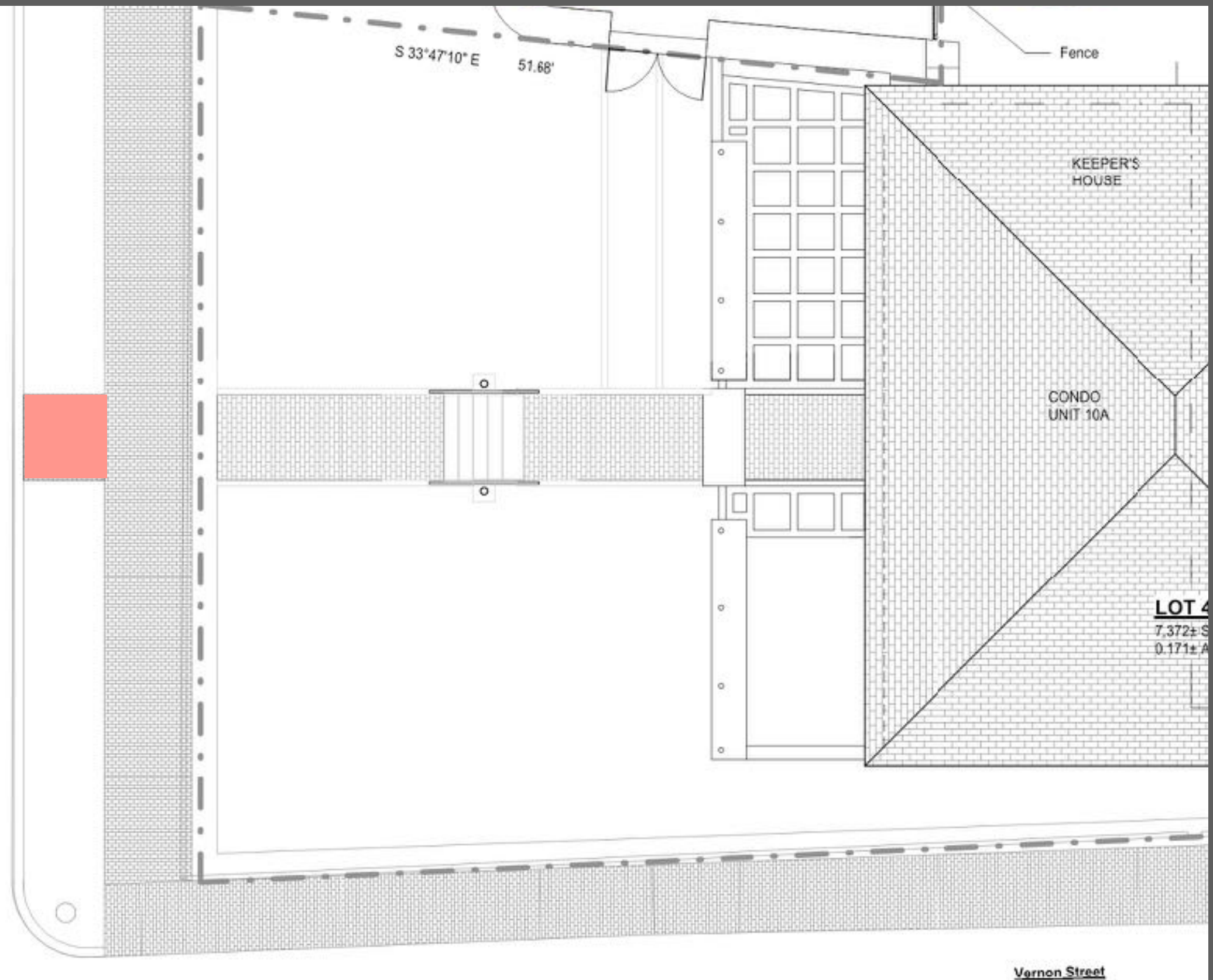
VERNON STREET TREE LOCATION IN YELLOW



THIS YARD, WALL AND PAVING NEED LANDSCAPING



RAILINGS NEEDED



GRANITE WALK TO STREET FROM SIDEWALK



FLETCHER GRANITE
CHELMSFORD MA

GRANITE SLAB AS WALK FROM
SIDEWALK TO STREET CURB



GRANITE ADDRESS POST

3"
LETTERS

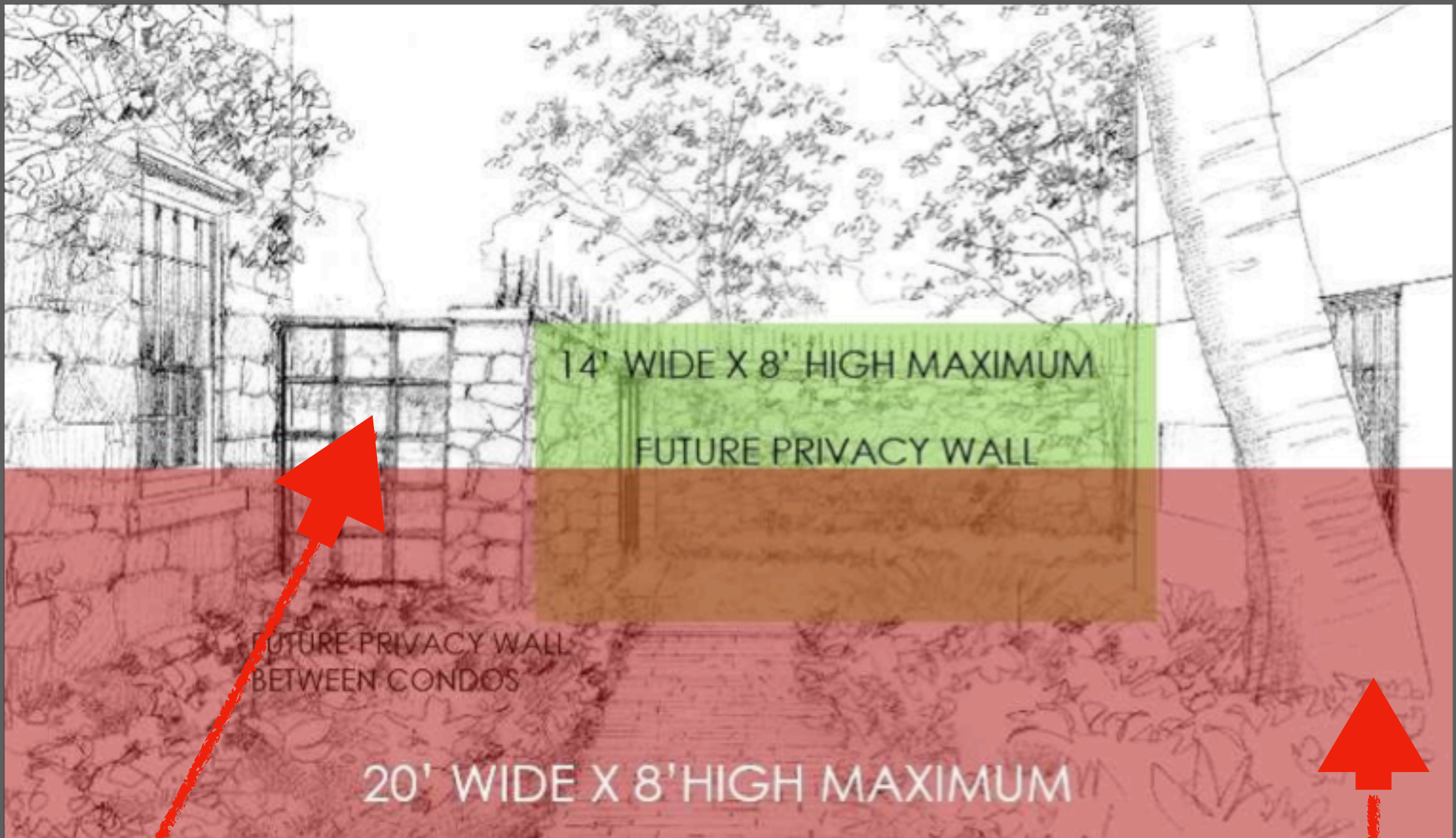
10 1/2

POST
16' wide
Bury to 5' high

MAILBOX
ON
BACKSIDE

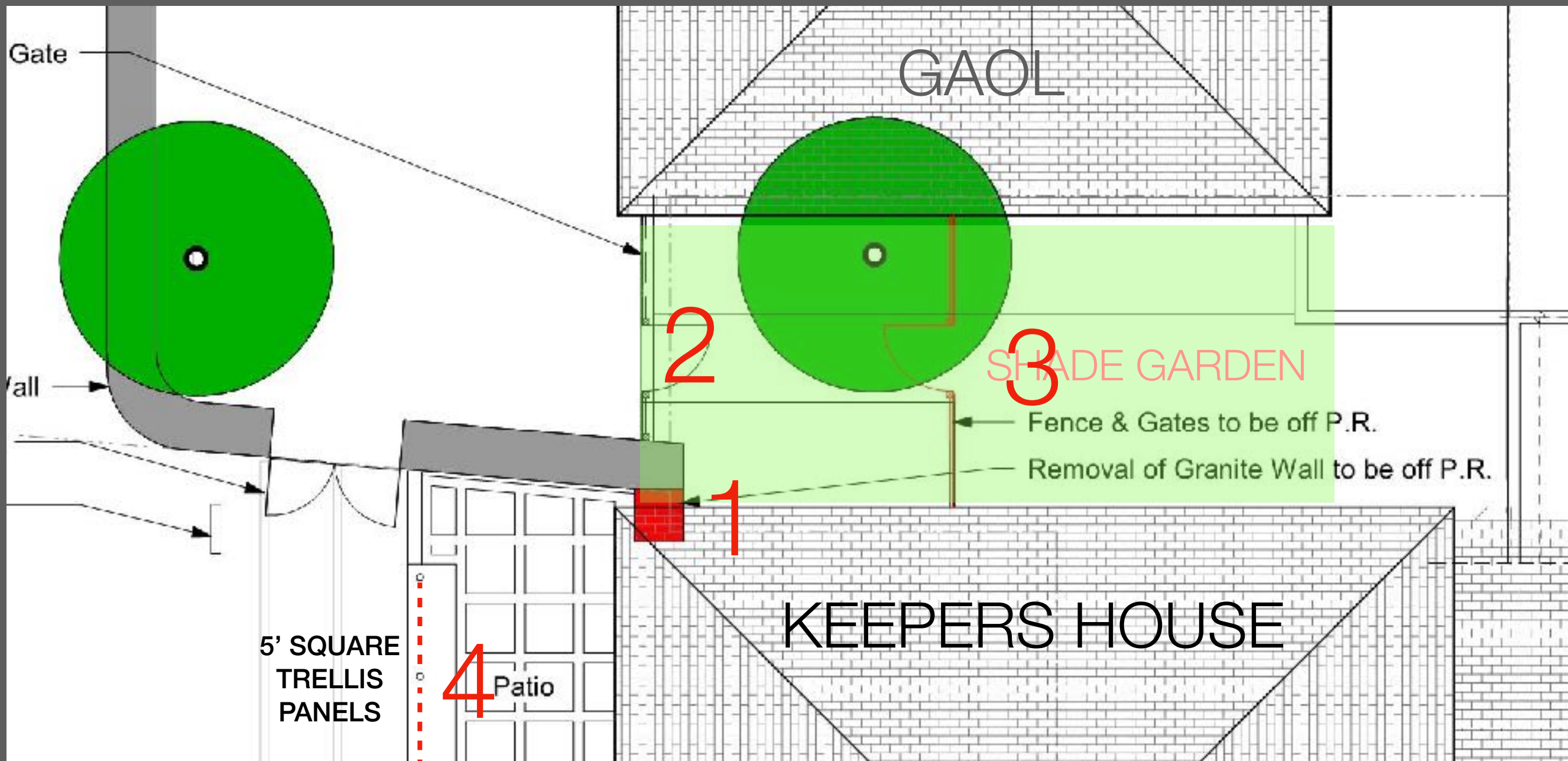


SHADE GARDEN KEPT INTACT



BY CREATING A FRONT PATIO WITH TRELLIS

1. NO NEED TO REMOVE PART OF THE 1825 GRANITE WALL
 2. NO NEED TO HAVE THIS FENCE IN THE COURTYARD
- (BOTH ARE ALLOWED IN THE PR)



- 1: RED INDICATES THE 1825 GRANITE WALL UNCHANGED.
- 2: 14'X 8' PRIVACY WALL OMITTED TO BECOME 4' IRON PICKET FENCE WITH GATE.
- 3: THE FENCE AND GATE OMITTED ENTIRELY.
- 1, 2 & 3 ARE OMITTED AS EXCEPTIONS IN THE PR .
- 4: 5' SQUARE GRILLS MOUNTED IN TO THE STONE SILL



SHADE GARDEN STAYS INTACT DOESN'T BECOME TWO GARDENS



1825
wall
remains

10 1/2

10 AUBURN ST.

REQUESTS FOR TONIGHT

APPROVAL OF PROPOSED IMPROVEMENTS
TO THE KEEPERS HOUSE YARD

FUTURE MEETING

FINALIZING THE PR.

END

THANK YOU

CHARLES GRIFFIN
OLD GAOL
NEWBURYPORT

MAY 27 2021



RENDERING of the PROMINENT PUBLIC VIEW
NO TREE TRUNKS OBSCURE THE VIEW