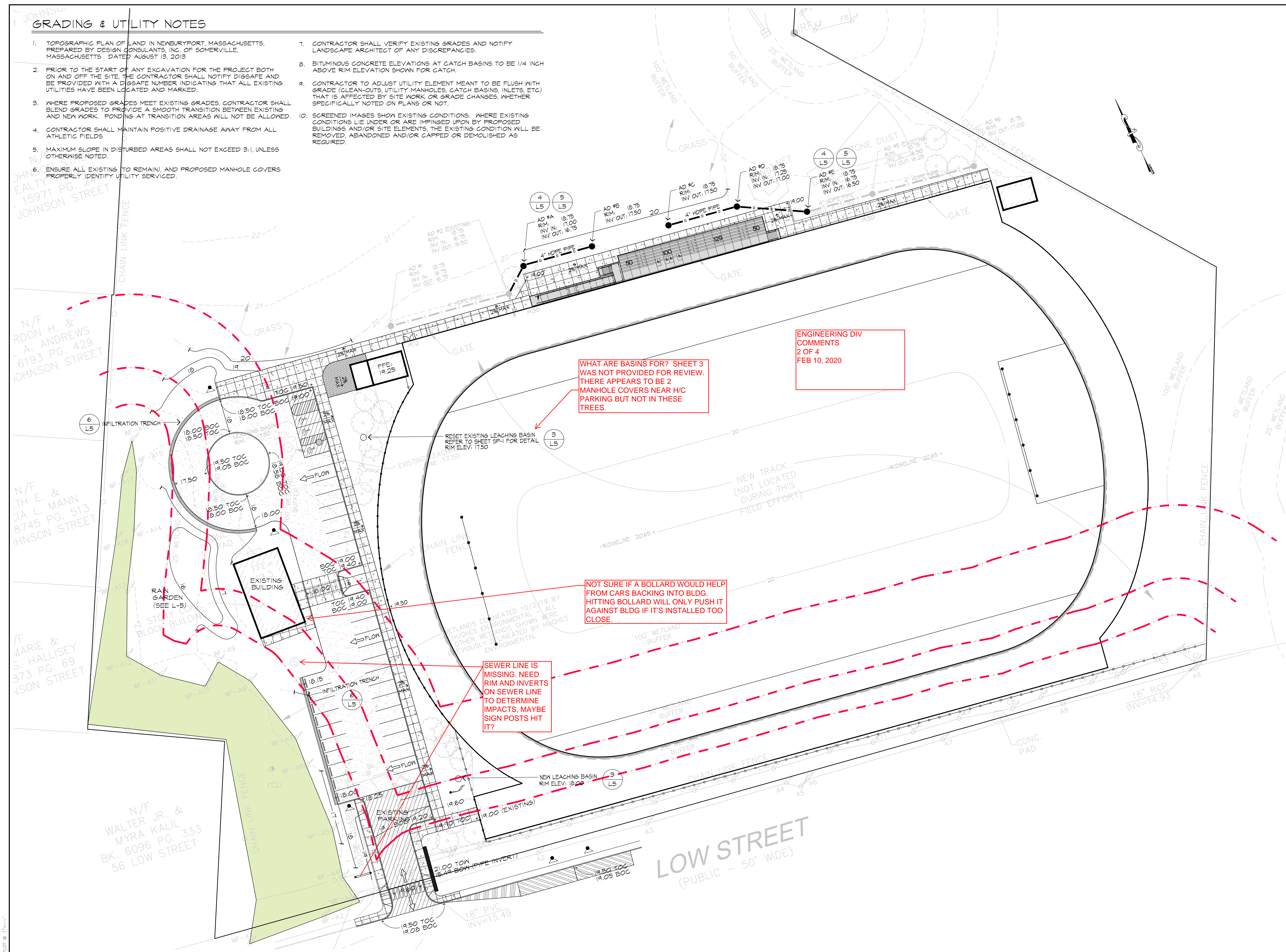






**GRADING & UTILITY NOTES**

1. TOPOGRAPHIC PLAN OF LAND IN NEWBURYPORT, MASSACHUSETTS, PREPARED BY DESIGN CONSULTANTS, INC. OF SOMERVILLE, MASSACHUSETTS, DATED AUGUST 13, 2013
2. PRIOR TO THE START OF ANY EXCAVATION FOR THE PROJECT BOTH ON AND OFF THE SITE, THE CONTRACTOR SHALL NOTIFY DIGSAFE AND BE PROVIDED WITH A DIGSAFE NUMBER INDICATING THAT ALL EXISTING UTILITIES HAVE BEEN LOCATED AND MARKED.
3. WHERE PROPOSED GRADES MEET EXISTING GRADES, CONTRACTOR SHALL BLEND GRADES TO PROVIDE A SMOOTH TRANSITION BETWEEN EXISTING AND NEW WORK. PONDING AT TRANSITION AREAS WILL NOT BE ALLOWED.
4. CONTRACTOR SHALL MAINTAIN POSITIVE DRAINAGE AWAY FROM ALL ATHLETIC FIELDS
5. MAXIMUM SLOPE IN DISTURBED AREAS SHALL NOT EXCEED 3:1, UNLESS OTHERWISE NOTED.
6. ENSURE ALL EXISTING (TO REMAIN), AND PROPOSED MANHOLE COVERS PROPERLY IDENTIFY UTILITY SERVICED.
7. CONTRACTOR SHALL VERIFY EXISTING GRADES AND NOTIFY LANDSCAPE ARCHITECT OF ANY DISCREPANCIES.
8. BITUMINOUS CONCRETE ELEVATIONS AT CATCH BASINS TO BE 1/4 INCH ABOVE RIM ELEVATION SHOWN FOR CATCH.
9. CONTRACTOR TO ADJUST UTILITY ELEMENT MEANT TO BE FLUSH WITH GRADE (CLEAN-OUTS, UTILITY MANHOLES, CATCH BASINS, INLETS, ETC) THAT IS AFFECTED BY SITE WORK OR GRADE CHANGES, WHETHER SPECIFICALLY NOTED ON PLANS OR NOT.
10. SCREENED IMAGES SHOW EXISTING CONDITIONS. WHERE EXISTING CONDITIONS LIE UNDER OR ARE IMPINGED UPON BY PROPOSED BUILDINGS AND/OR SITE ELEMENTS, THE EXISTING CONDITION SHALL BE REMOVED, ABANDONED AND/OR CAPPED OR DEMOLISHED AS REQUIRED.



ENGINEERING DIV  
COMMENTS  
2 OF 4  
FEB 10, 2020

WHAT ARE BASINS FOR? SHEET 3  
WAS NOT PROVIDED FOR REVIEW.  
THERE APPEARS TO BE 2  
MANHOLE COVERS NEAR H/C  
PARKING BUT NOT IN THESE  
TREES.

NOT SURE IF A BOLLARD WOULD HELP  
FROM CARS BACKING INTO BLDG.  
HITTING BOLLARD WILL ONLY PUSH IT  
AGAINST BLDG IF IT'S INSTALLED TOO  
CLOSE.

SEWER LINE IS  
MISSING. NEED  
RIM AND INVERTS  
ON SEWER LINE  
TO DETERMINE  
IMPACTS. MAYBE  
SIGN POSTS HIT  
IT?



**Huntress Associates, Inc.**

Landscape Architecture & Land Planning

17 Tewksbury Street  
Andover, Massachusetts 01810  
978 470 8882 FAX 978 470 8890

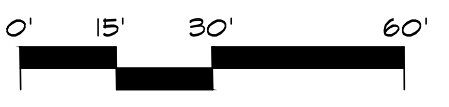
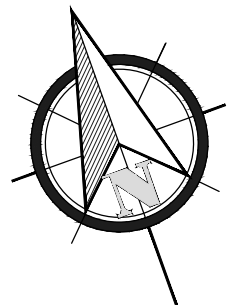


Project:

**FULLER FIELD  
Track & Field  
Phase Two**  
Newburyport, Massachusetts

Drawing Title:

**Grading & Drainage**



Revision	Date
RELOCATED MONUMENT SIGN	2.4.20

Scale:	1" = 30'	Drawing No.	<b>L-2</b>
Date:	01.13.20		
Job:	99-101		
File:	FR-MP		
Drawn:	CCH	of	
Checked:	--		<b>6</b>

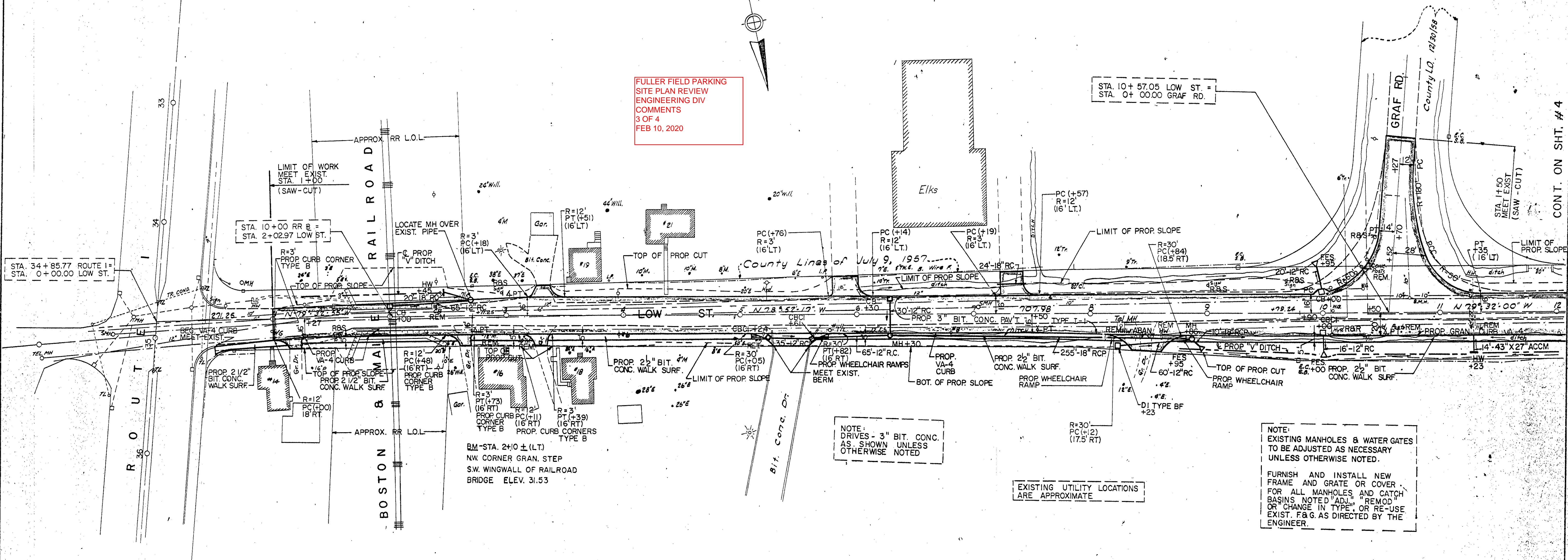


DRAINAGE DETAILS  
SEE BELOW

STEEL BEAM HIGHWAY GUARD  
NONE

NEWBURYPORT - LOW STREET					
PUB. RD. DIV. NO.	STATE	FEDERAL PROJECT NO.	AID YEAR	FISCAL SHEET NO.	TOTAL SHEETS
1	MASS.		197	3	93

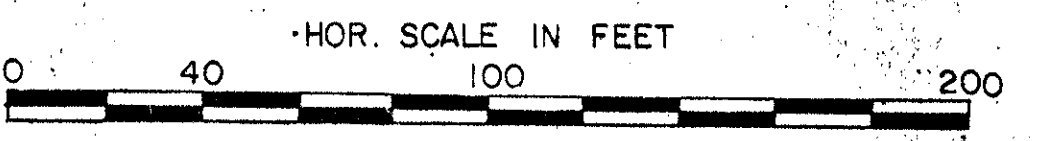
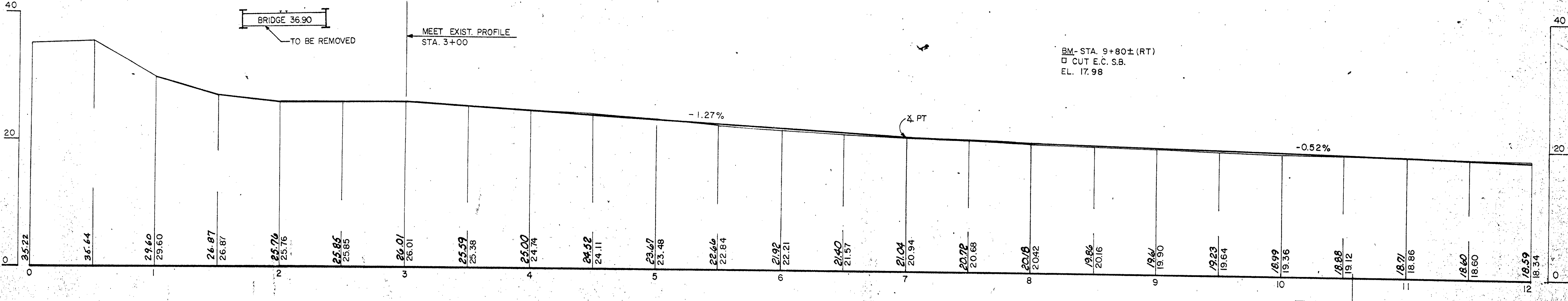
FULLER FIELD PARKING  
SITE PLAN REVIEW  
ENGINEERING DIV  
COMMENTS  
3 OF 4  
FEB 10, 2020



NOTE:  
DRIVES - 3" BIT. CONC.  
AS SHOWN UNLESS  
OTHERWISE NOTED

EXISTING UTILITY LOCATIONS  
ARE APPROXIMATE

NOTE:  
EXISTING MANHOLES & WATER GATES  
TO BE ADJUSTED AS NECESSARY  
UNLESS OTHERWISE NOTED.  
  
FURNISH AND INSTALL NEW  
FRAME AND GRATE OR COVER  
FOR ALL MANHOLES AND CATCH  
BASINS NOTED "ADJ.", "REMOD."  
OR "CHANGE IN TYPE" OR RE-USE  
EXIST. F&G AS DIRECTED BY THE  
ENGINEER.



STA. 10+57.05 LOW ST. =  
STA. 0+00.00 GRAF RD.

REFERENCE  
NB 25160  
NB 25440

CONT. ON SHT. #4



DRAINAGE DETAILS  
SEE BELOW

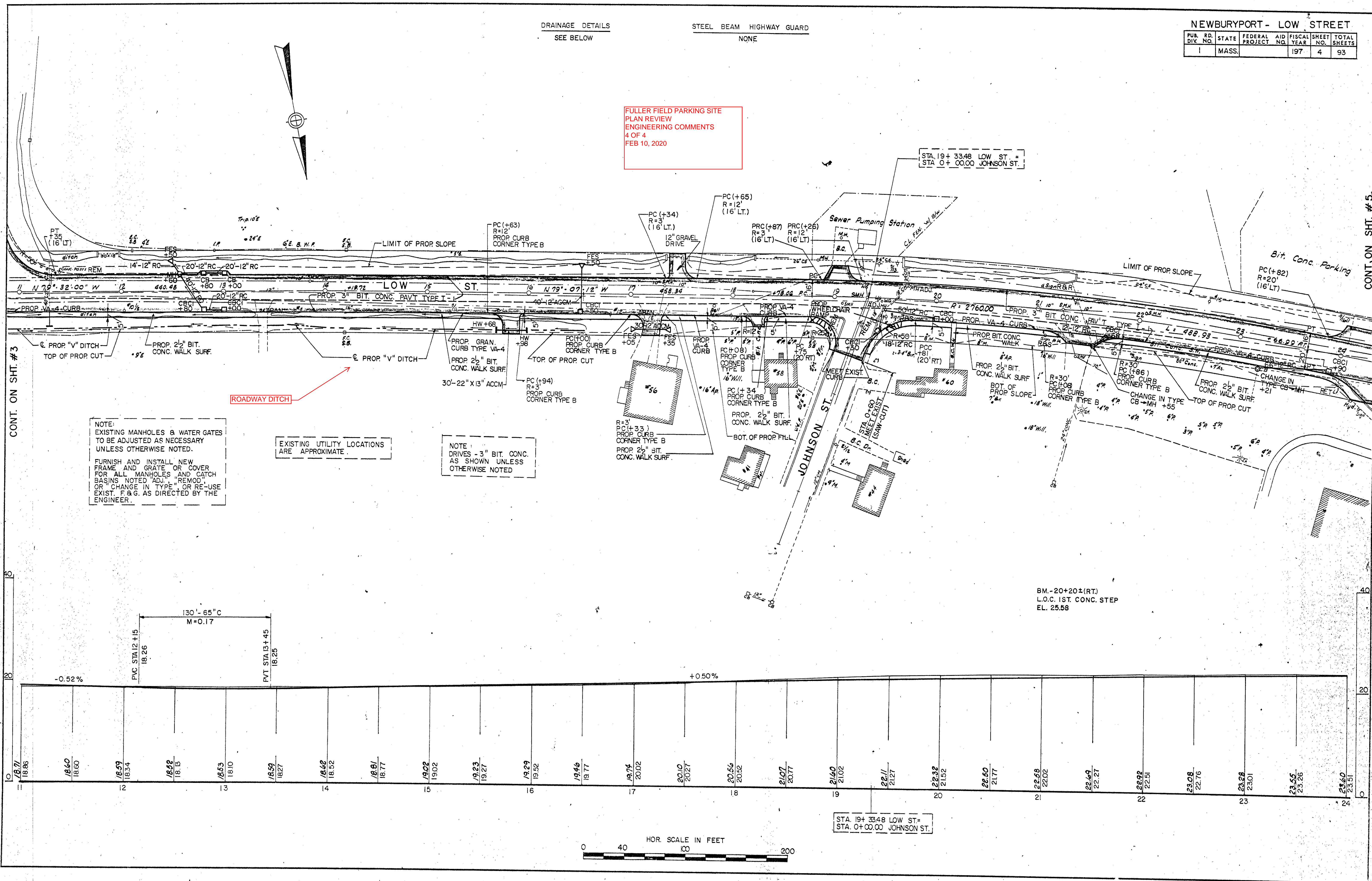
STEEL BEAM HIGHWAY GUARD  
NONE

NEWBURYPORT - LOW STREET

PUB. DIV. NO.	STATE	FEDERAL PROJECT NO.	FISCAL YEAR	SHEET NO.	TOTAL SHEETS
1	MASS.		197	4	93

FULLER FIELD PARKING SITE  
PLAN REVIEW  
ENGINEERING COMMENTS  
4 OF 4  
FEB 10, 2020

STA. 19+33.48 LOW ST. =  
STA. 0+00.00 JOHNSON ST.



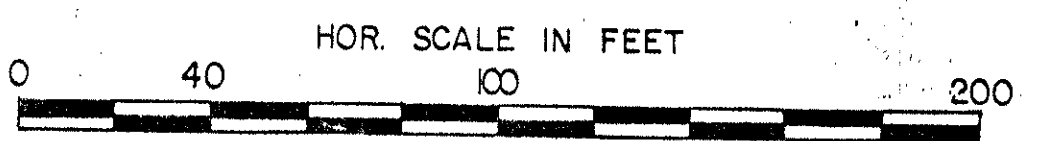
NOTE:  
EXISTING MANHOLES & WATER GATES  
TO BE ADJUSTED AS NECESSARY  
UNLESS OTHERWISE NOTED.  
  
FURNISH AND INSTALL NEW  
FRAME AND GRATE OR COVER  
FOR ALL MANHOLES AND CATCH  
BASINS NOTED "REMOD"  
OR "CHANGE IN TYPE" OR RE-USE  
EXIST. F&G AS DIRECTED BY THE  
ENGINEER.

EXISTING UTILITY LOCATIONS  
ARE APPROXIMATE.

NOTE:  
DRIVES - 3" BIT. CONC.  
AS SHOWN UNLESS  
OTHERWISE NOTED

BM.-20+20±(RT.)  
L.O.C. 1ST. CONC. STEP  
EL. 25.58

STA. 19+33.48 LOW ST. =  
STA. 0+00.00 JOHNSON ST.



CONT. ON SHT. #3

CONT. ON SHT. #5