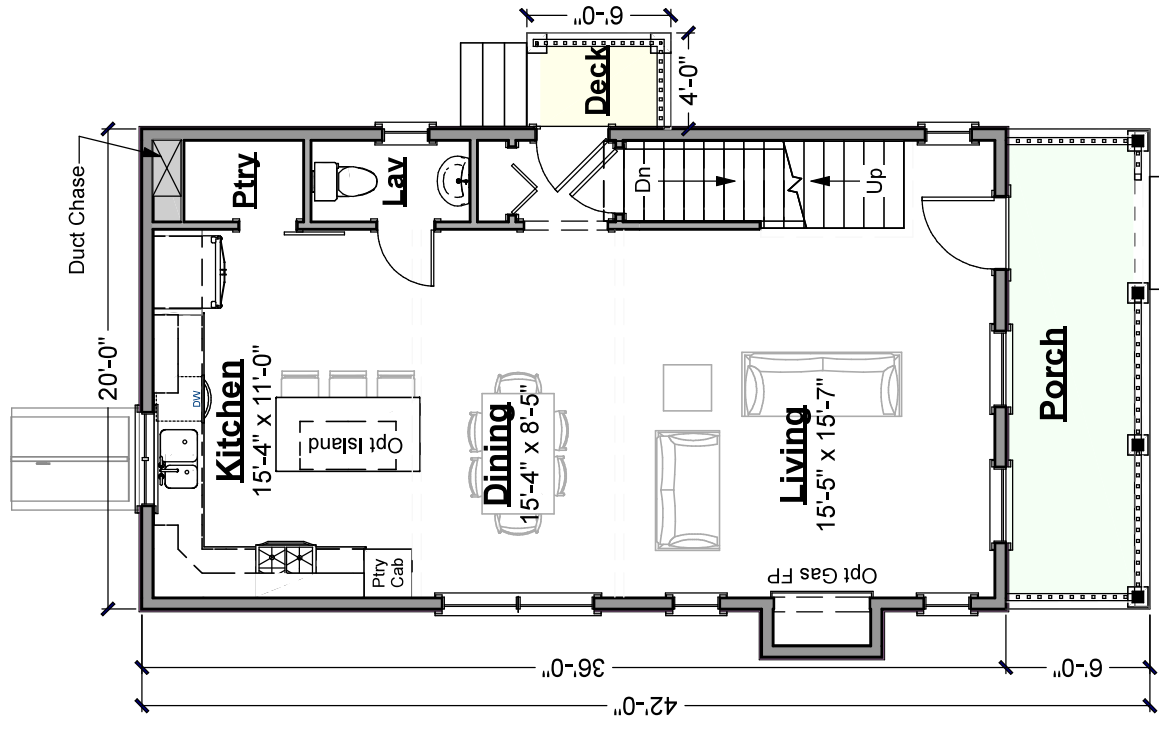
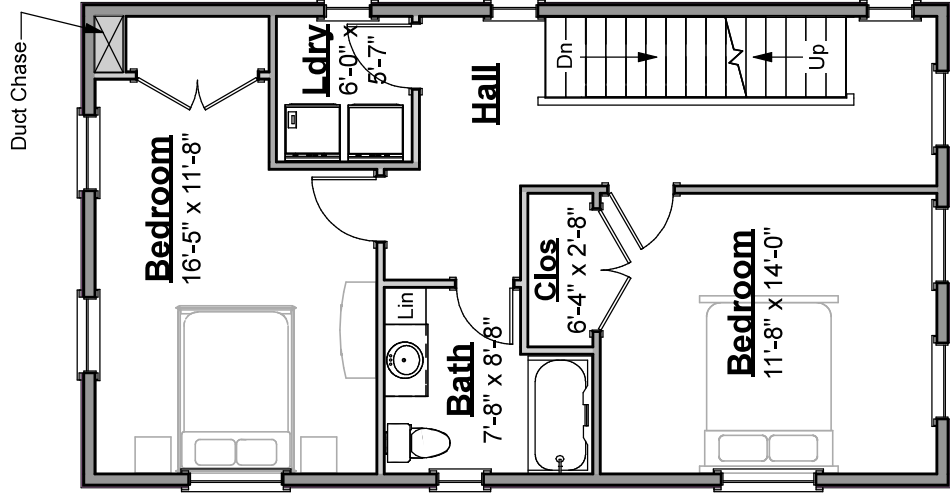


© 2020 Art Form Architecture, Inc., all rights reserved . You may not build this design without purchasing a license, even if you make changes. This design may have geographic restrictions.



Living Area - First Floor: 720 sq.ft
9 ft Ceilings

First Floor Plan
Scale: 1/8" = 1'-0"

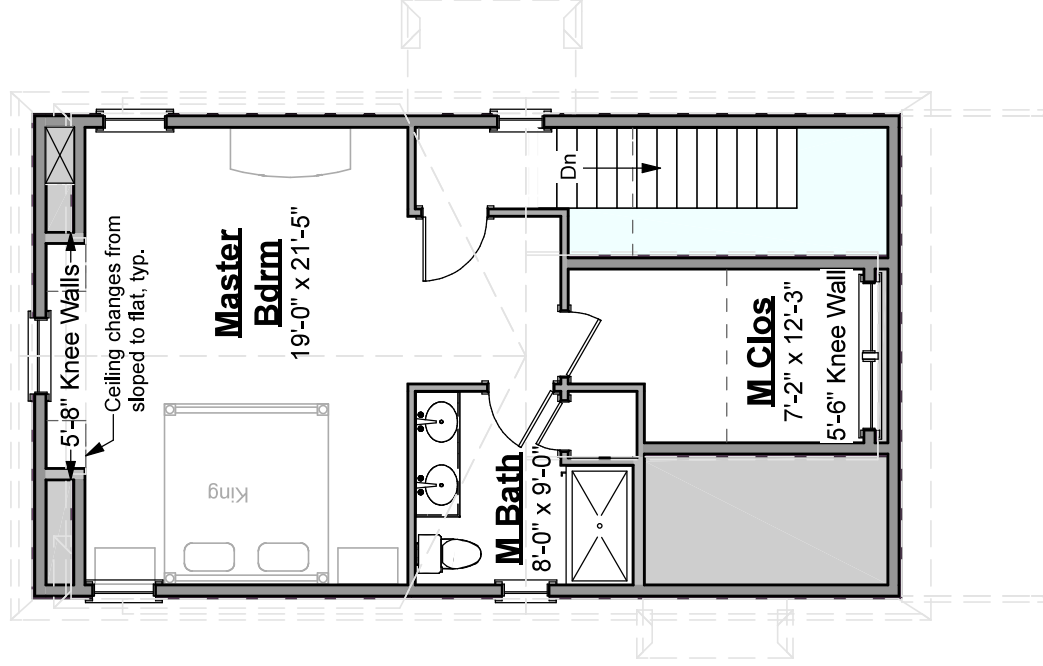


Living Area - Second Floor: 720 sq ft
8 ft Ceilings

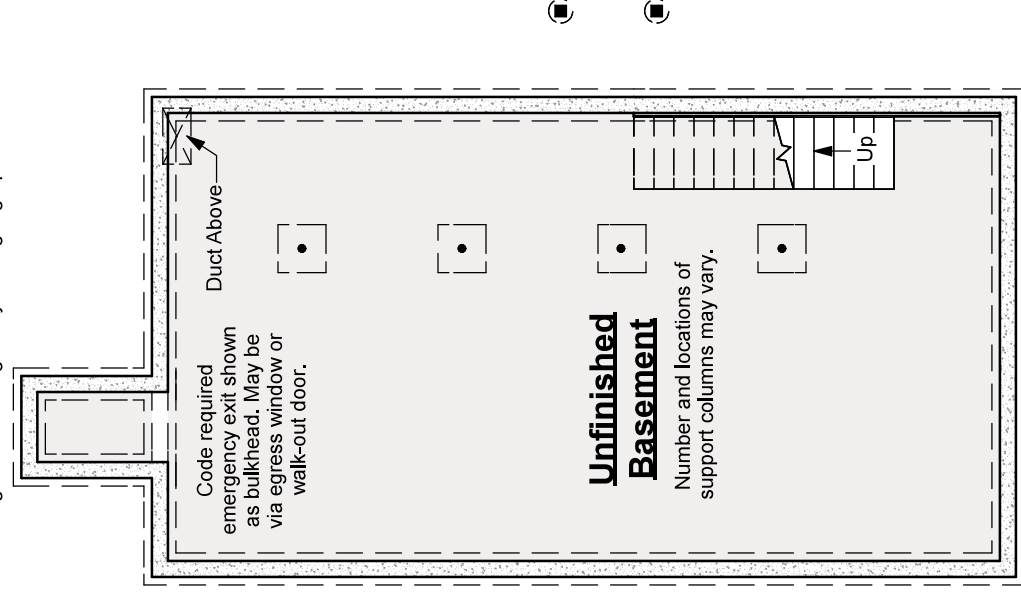
Second Floor Plan

Scale: 1/8" = 1'-0"

Living Area - Third Floor: 547 sq.ft
8 ft Ceilings



Third Floor Plan
Scale: 1/8" = 1'-0"



IMPORTANT BASEMENT NOTES:

- Unless an area is specifically designed as "no posts", additional posts may be required.
- Unless specifically noted otherwise, basement beams will be framed below the floor joists.
- Basement spaces accommodate utilities, mechanical equipment and the horizontal movement of plumbing pipes, electrical wires and heating ducts. Both as part of any Construction Drawings produced based on this design and as future decisions made by the builder, changes to accommodate these items must be expected.
- Basement window locations are dependent on site conditions and utility locations. Clarify number and location with your builder.

Foundation Plan
 Scale: 1/8" = 1'-0"