

4/8/2020

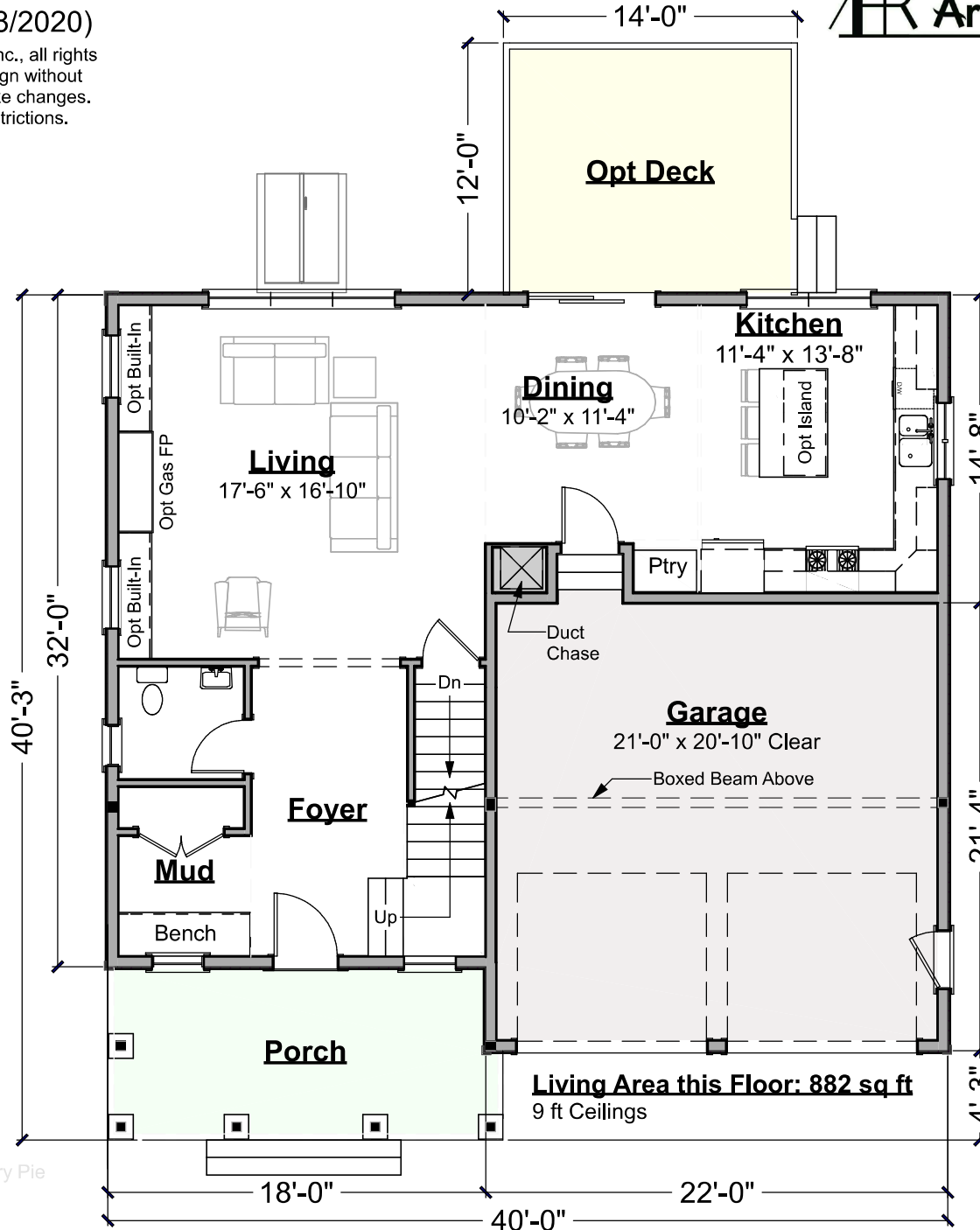
Sweet Cherry Pie

481.124.v8 KR (4/8/2020)

© 2012-2020 Art Form Architecture, Inc., all rights reserved . You may not build this design without purchasing a license, even if you make changes. This design may have geographic restrictions.



603-431-9559



First Floor Plan
Scale: 1/8" = 1'-0"

4/8/2020

Sweet Cherry Pie

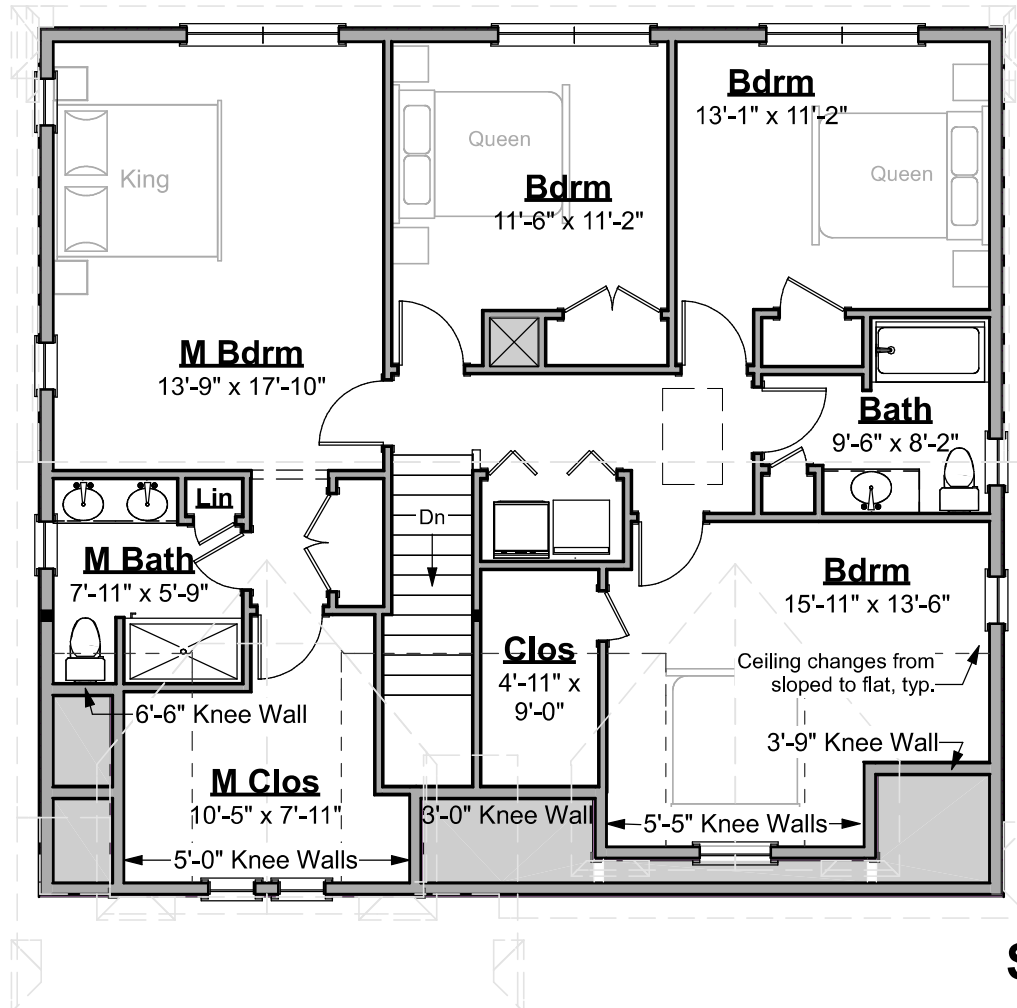
481.124.v8 KR (4/8/2020)

© 2012-2020 Art Form Architecture, Inc., all rights reserved . You may not build this design without purchasing a license, even if you make changes. This design may have geographic restrictions.

603-431-9559

Living Area this Floor: 1342 sq ft

8 ft Ceilings



Second Floor Plan
Scale: 1/8" = 1'-0"

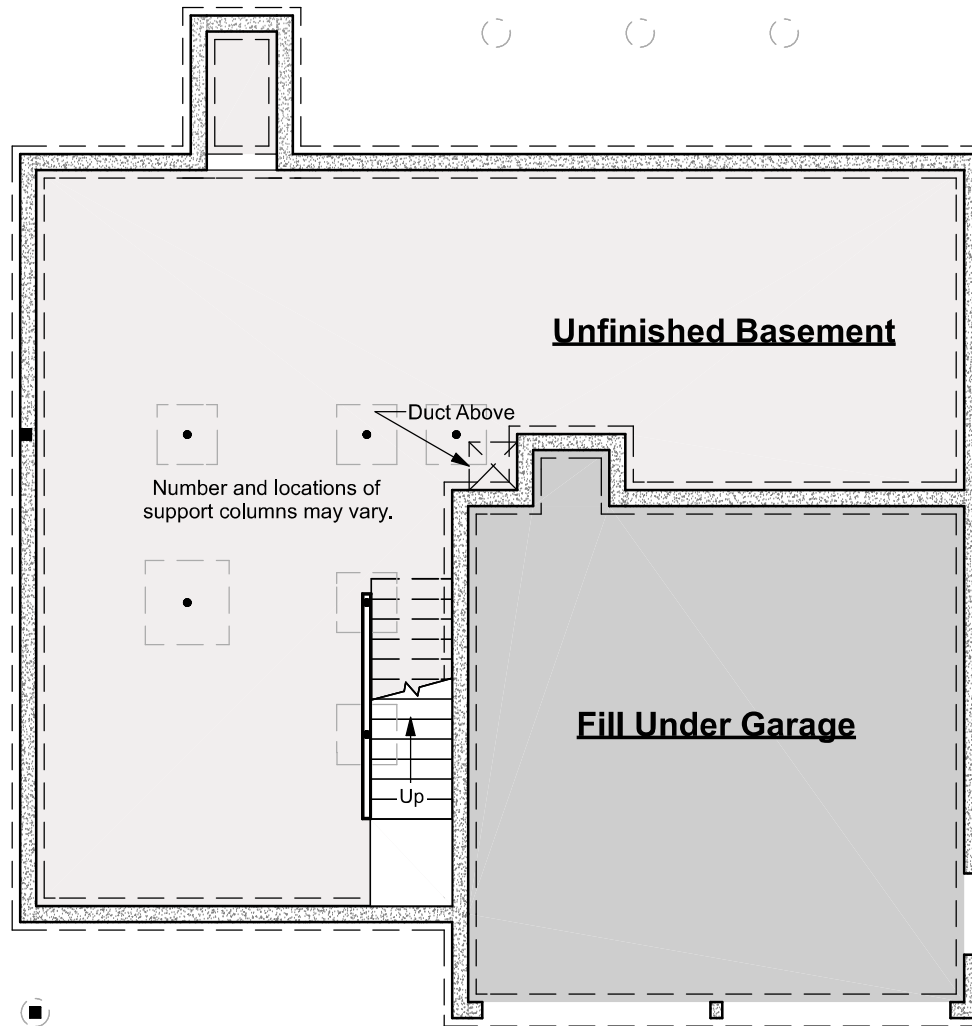
Sweet Cherry Pie

481.124.v8 KR (4/8/2020)

© 2012-2020 Art Form Architecture, Inc., all rights reserved. You may not build this design without purchasing a license, even if you make changes. This design may have geographic restrictions.

IMPORTANT BASEMENT NOTES:

- Unless an area is specifically designed as "no posts", additional posts may be required.
- Unless specifically noted otherwise, basement beams will be framed below the floor joists.
- Basement spaces accommodate utilities, mechanical equipment and the horizontal movement of plumbing pipes, electrical wires and heating ducts. Both as part of any Construction Drawings produced based on this design and as future decisions made by the builder, changes to accommodate these items must be expected.
- Basement window locations are dependent on site conditions and utility locations. Clarify number and location with your builder.



Foundation Plan
Scale: 1/8" = 1'-0"