

BARTLET MALL

1779 to PRESENT

HISTORY : SIGNIFICANCE : PRESERVATION :
NEXT STEPS : CPC REQUEST 2021

FOR
NEWBURYPORT HISTORIC
COMMISSION

NEWBURYPORT CITY HALL

FEBURARY 25 2021

KIM TURNER
KD TURNER DESIGN
LANDSCAPE ARCHITECTS
PARKS COMMISSIONER /CHAIR

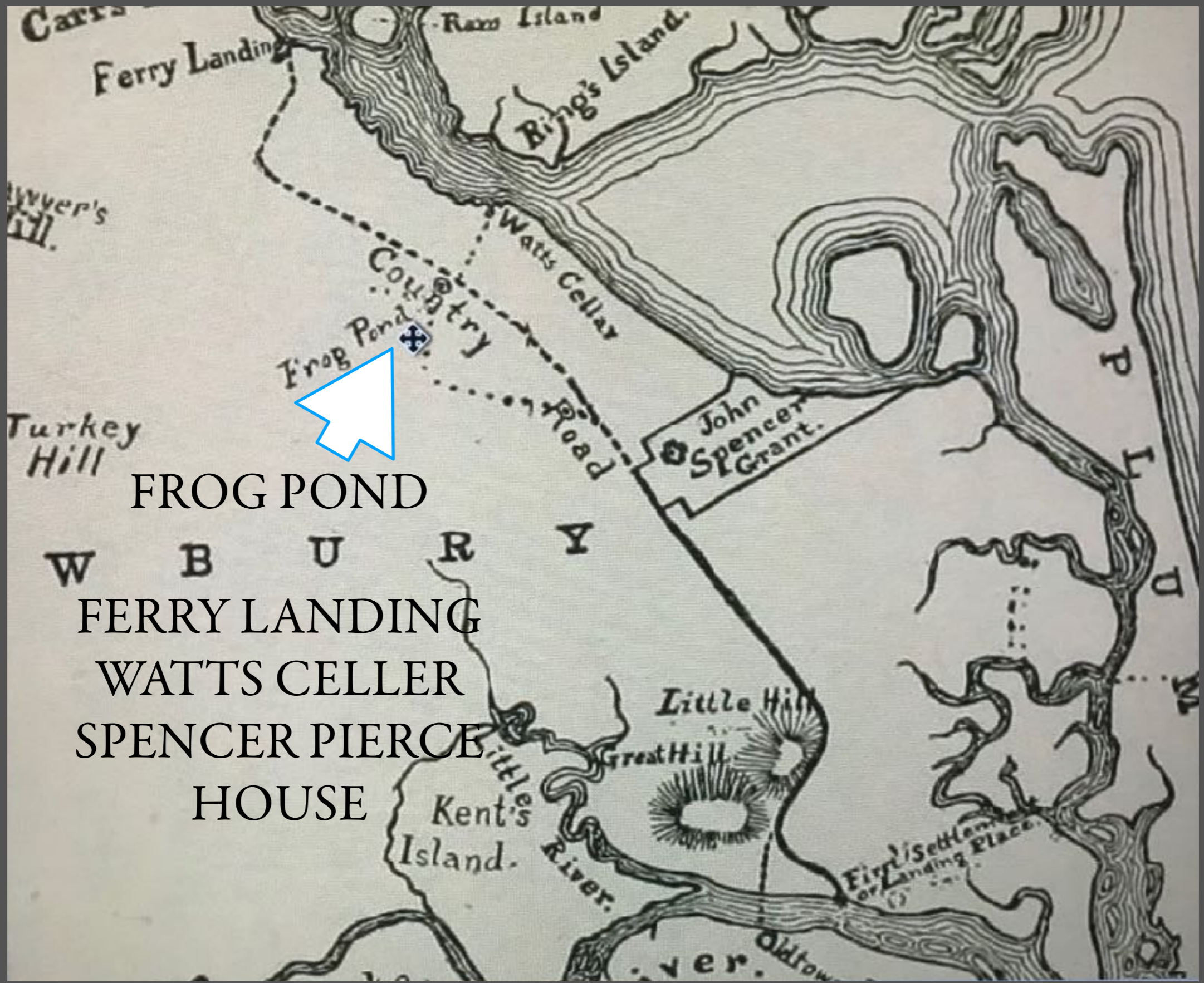
CHARLES GRIFFIN
EGA ARCHITECTS
PARKS COMMISSIONER / MALL
CPC MEMBER



CIRCA?

SETTLERS ARRIVE BY BOAT FROM IPSWICH

MAY OR JUNE 1635



FROG POND
FERRY LANDING
WATTS CELLER
SPENCER PIERCE
HOUSE

PRINCIPAL SITES SETTLERS NEWBURY
CURRIER 1640

THIS IS ONLY ORIGINAL PLACE THAT
AN INDIAN OR THE FIRST SETTLERS
VIEWED THAT REMAINS TO US.

A PRECIOUS PLACE.

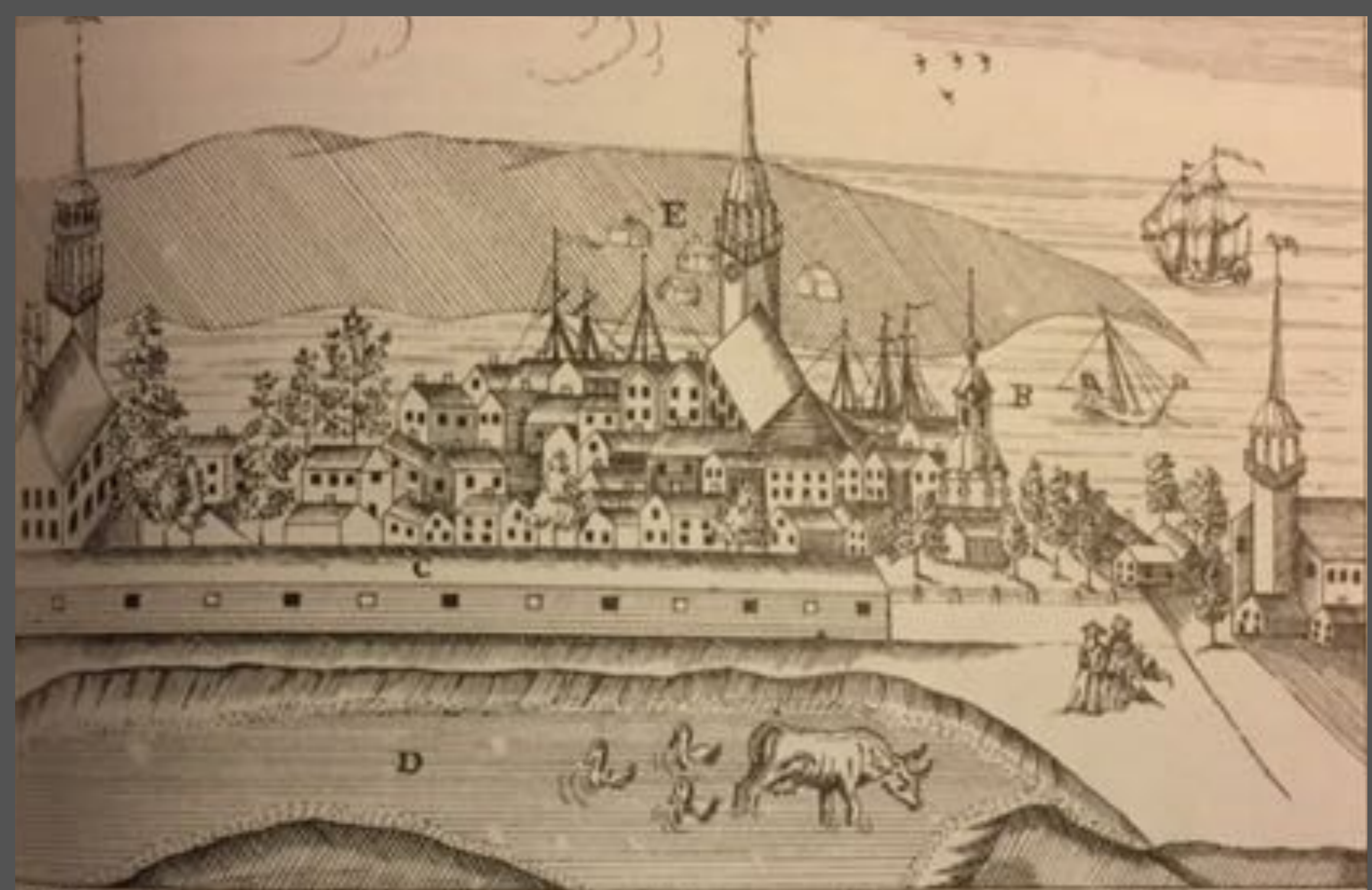
BOTH THE MALL AND THE
COURTHOUSE
ARE ON THE NATIONAL REGISTER.

John Vinyle
The above Survey
1766

John Vinyle's
1766



SURVEY by JOHN VINYL JULY 28 1766



A North-east View of the Town & harbour of NewburyPort

A The Town House | B. Nerimack River | C. Rope Walk | D. Frog Pond | E. Salisbury

After 1774 Engraving by B. Johnson FIRST PERSPECTIVE of FROG POND

THE INDUSTRIAL COMMONS

GRAZING LAND

ROPE WALK

BURIAL GROUND

WINDMILL

WAGON SCALES

POWDER HOUSE

CLAY PITS

POTASH HOUSE

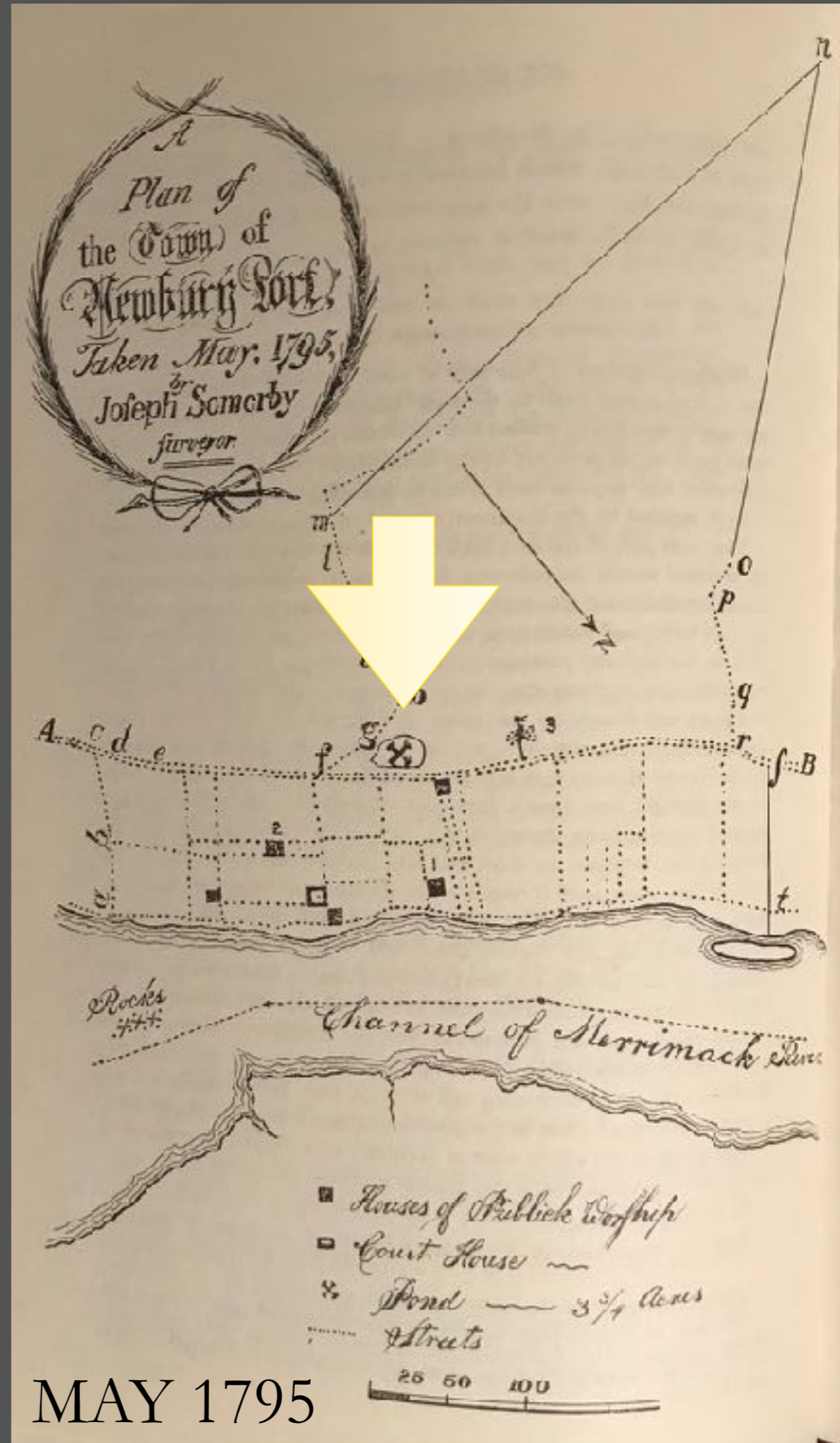
NEWBURYPORT SPLITS OFF FROM NEWBURY

31 JANUARY 1764

647 ACRES

357 HOUSES

2882 RESIDENTS



NATHANIAL TRACY
ALLOWED TO PLANT TREES
ON HIGH STREET
“WHERE THE ROPEWALK STOOD”

MARCH 9 1779

242 YEARS AGO

CURRIER

LIVED 1751-1796
(BANKRUPT 1786)

AGE 28

“...CAPTAIN EDWARD BARTLET AND A
FEW OTHER PUBLIC SPIRITED
CITIZENS OF NEWBURYPORT,
DETERMINED TO FILL UP
A DEEP REVINE NEAR THE HEAD OF
GREEN STREET, AND MAKE SOME
DESIRABLE IMPROVEMENTS IN THE
VICINITY OF THE POND. ALL PERSONS
INTERESTED IN THE WORK ARE
INVITED TO ASSIST IN LEVELING THE
LAND AND LAYING OUT A BROAD
PROMENADE....

CURRIER'S THE HISTORY OF NEWBURYPORT MA.

JAN 1, 1801

“THE HERALD, PUBLISHED IN IT’S EDITORIAL COLUMN,
THE FOLLOWING WORDS OF COMMENDATION...”

“SO DELIGHTFUL A SITUATION FOR A
PUBLIC WALK HAS BEEN FOR TOO LONG
NEGLECTED. WHEN COMPLETED IT
WILL NOT ONLY BE USEFUL TO THE
PEOPLE INDIVIDUALLY... BUT WHEN
THE TREES SHALL BE GROWN WILL BE
GREATLY CONDUCTIVE TO THE HEALTH,
AND HIGHLY ORNAMENTAL TO THE
TOWN”.

To the Select men of Newbury Port

Gentlemen, Please to insert a clause in your warning for the next Town meeting

To see if the Town will empower the Surveyor of High ways to make the repairs which may from time to time be necessary on the roads near Gray pond

March 9th 1802

Edw. Bartlett
John Greenleaf
Joshua Toppin

John Pearson

Samuel Cutler
Edward Toppin
A. Frothingham Jun
John Greenleaf

SURVEY THE HIGHWAY
The roads around the
COMMONS
MARCH 9
1802

EDWARD
BARTLET

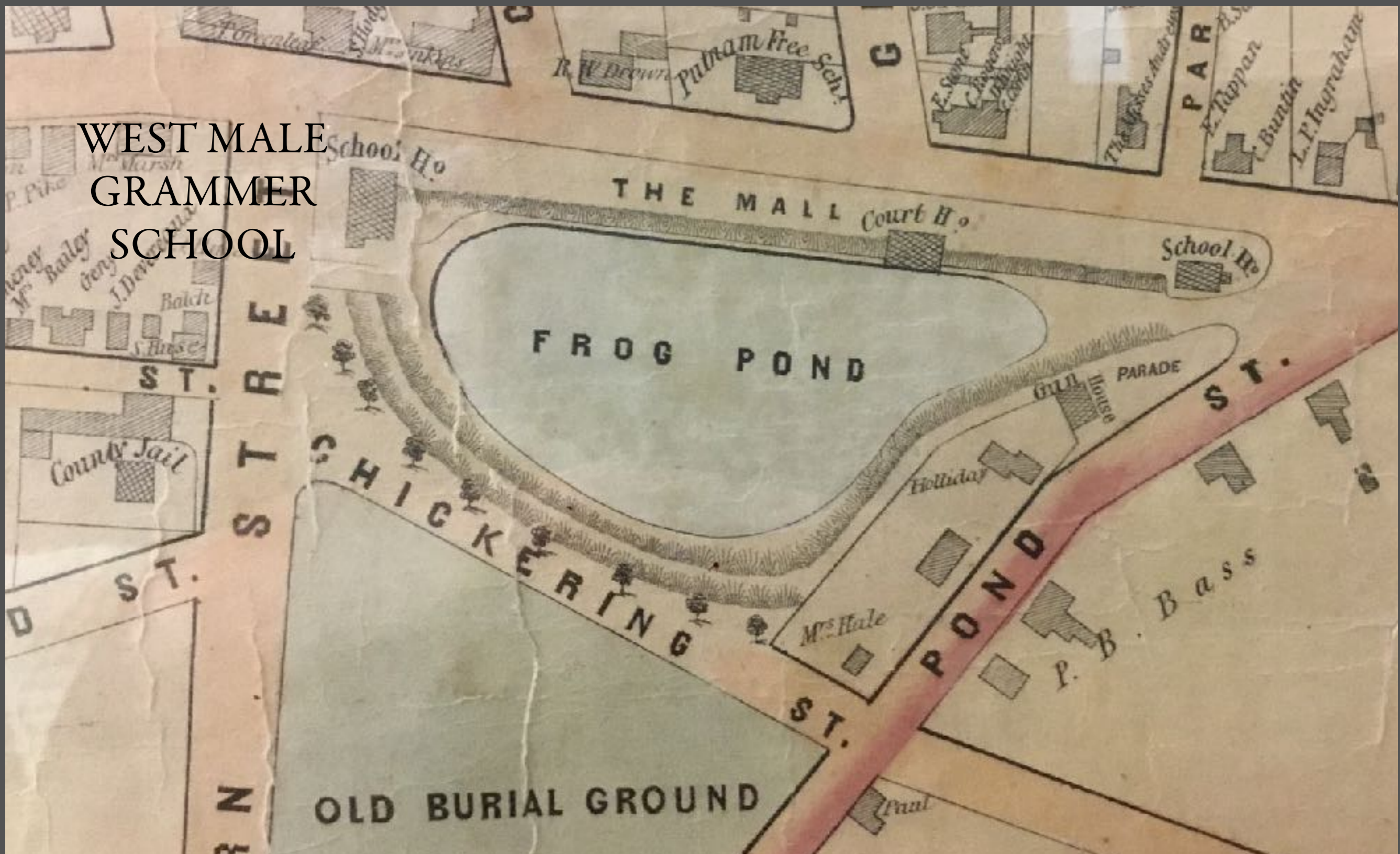
JOHN
GREENLEAF

JOSHUA
TOPPAN

EDWARD
TOPPAN

JOHN
PEARSON

WEST MALE
GRAMMER
SCHOOL



TREE PATTERN & BUILDINGS ON HIGH STREET
PRIVATE PROPERTY ON POND STREET

AFTER 1825
BEFORE 1887



R.E. MOSLEY

TAKEN 1867



BEFORE
1871

(SCHOOL
REMOVED
THEN)



1870 / 1882

WASHINGTON STATUE DEDICATED FEB 1879



BEFORE 1882

POND STREET HOUSES and BARN

“...AND THE
IMPROVEMENTS THAT
COULD BE MADE,
AT NO GREAT EXPENSE,
WOULD MAKE THIS
ONE OF THE MOST
BEAUTIFUL
ORNAMENTS
WHICH ARE ENJOYED
BY ANY CITY IN THE
COUNTRY”

“TO IMPROVE THE CONDITION
OF THE MALL AND POND
WITH THE GROUNDS ADJOINING,
WHICH FOR MANY YEARS
HAVE BEEN NEGLECTED THAT
NO SON OF NEWBURYPORT
CAN LOOK ON THEM
WITHOUT A FEELING OF
DISAPPOINTMENT AND
MORTIFICATION.”

MALL IMPROVEMENT ASSOCIATION

FUND RAISING LETTER

OCTOBER 15 1888

THIS PLACE HAS VERY
STRIKING AND NATURAL
ADVANTAGES. IT IS HIGH AND
CENTRAL, AND, WITHOUT
GREAT EXPENSE, CAN BE
MADE EXCEEDINGLY
ATTRACTIVE AND
ORNAMENTAL

MALL IMPROVEMENT ASSOCIATION

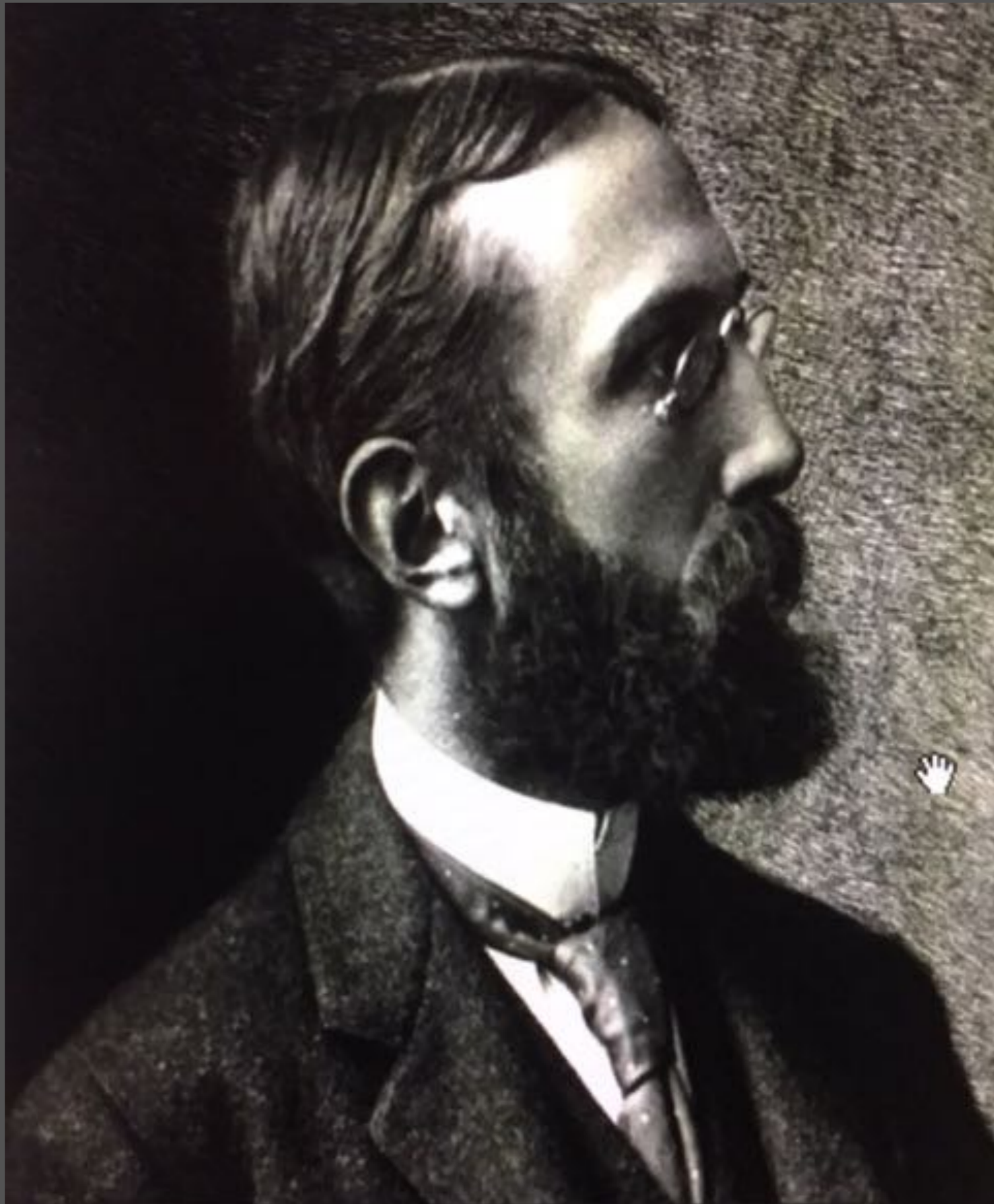
OCTOBER 1888

*MALL
IMPROVEMENT
ASSOCIATION*

*ENGAGES
CHARLES ELIOT
LANDSCAPE
ARCHITECT*

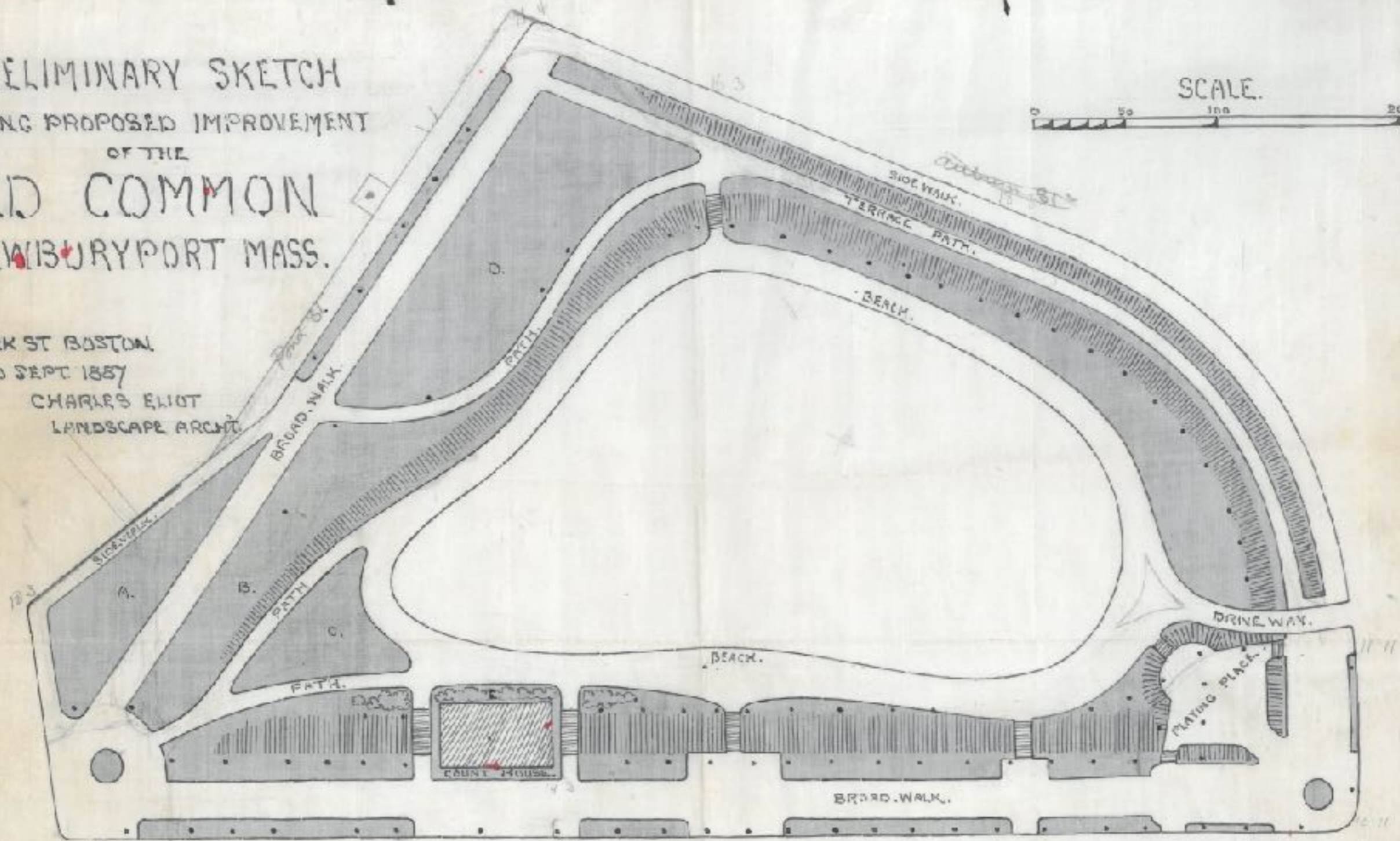
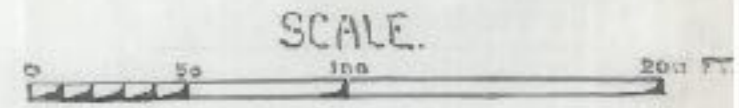
1887

Charles Eliot, landscape architect



PRELIMINARY SKETCH
SHOWING PROPOSED IMPROVEMENT
OF THE
OLD COMMON
NEWBURYPORT MASS.

9 PARK ST BOSTON
30 SEPT 1887
CHARLES ELIOT
LANDSCAPE ARCHT.



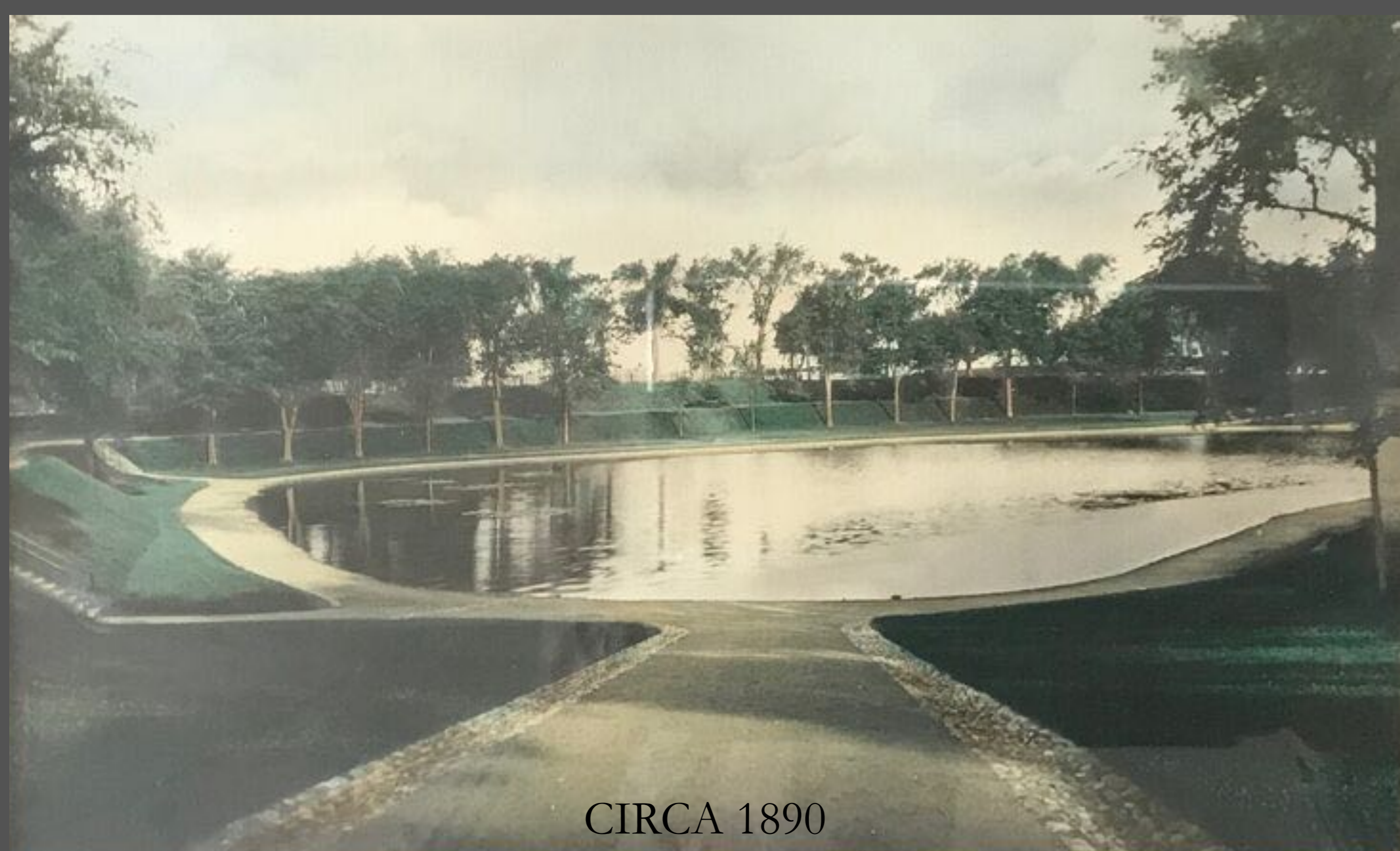
GRIFFIN 2018

ELIOT'S FIRST PLAN 30 SEPTEMBER 1887

“YOU ARE DETERMINED
THAT YOUR ANCIENT
COMMONS SHALL BE MADE
MORE ATTRACTIVE
AND USEFUL”

CHARLES ELIOT
LANDSCAPE ARCHITECT

FIRST LETTER
30 SEPTEMBER 1887



CIRCA 1890

MALL COMPLETED 1890
STEEP MOWN SLOPES VIEWS UNDER TREES
PLANTED IN A PATTERN GRAVEL WALKS



MAY 14 1891

MALL IMPROVEMENT ASSOCIATION
DISBANDED 1891



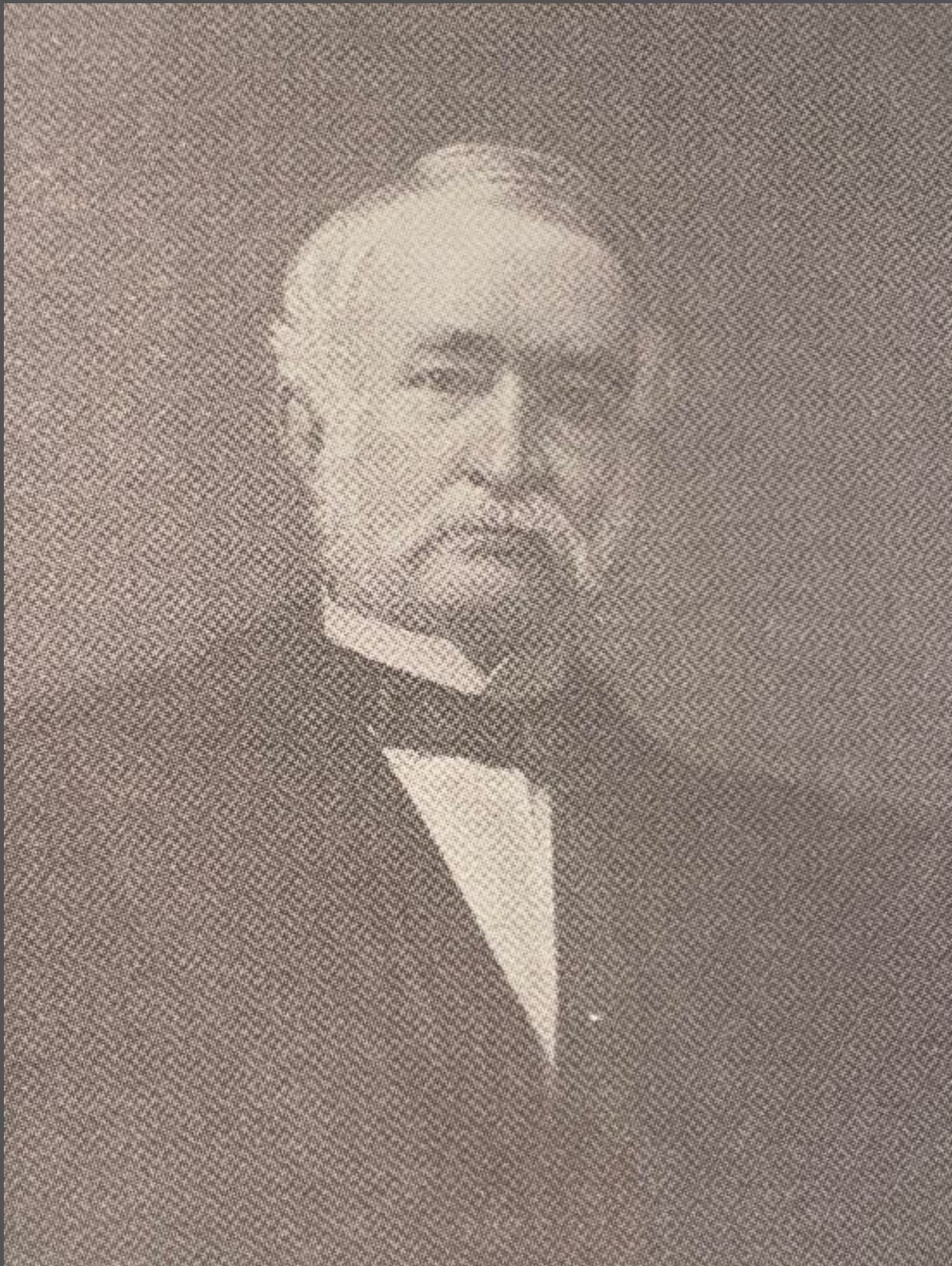
CIRCA 1891

TREES PLANTED TO A PLAN



CIRCA 1892

EDWARD S. MOSLEY FOUNTAIN
INSTALLED FALL 1891



EDWARD
STRONG
MOSLEY

1813-1900

GAVE FOUNTAIN

1891

GAVE POND STREET

LAND

1885?



SURFACE OF IRONWORK
NEEDS TO BE CLEANED
AND REFINISHED WITH
A CERTIFIED FINISH
USED BY THE NAVY.
THE INSIDE OF
ALL PIECES WILL ALSO
BE EQUALLY COATED
ALL FITTINGS
STAINLESS STEEL
FIBERGLASS SWANS
NEED TO BE CLEANED
AND A PROTECTIVE TWO PART
COATING APPLIED .

WATER TO KEEP THE POND AT A CONSTANT
LEVEL WILL ENTER THE POND FROM THE FOUNTAIN



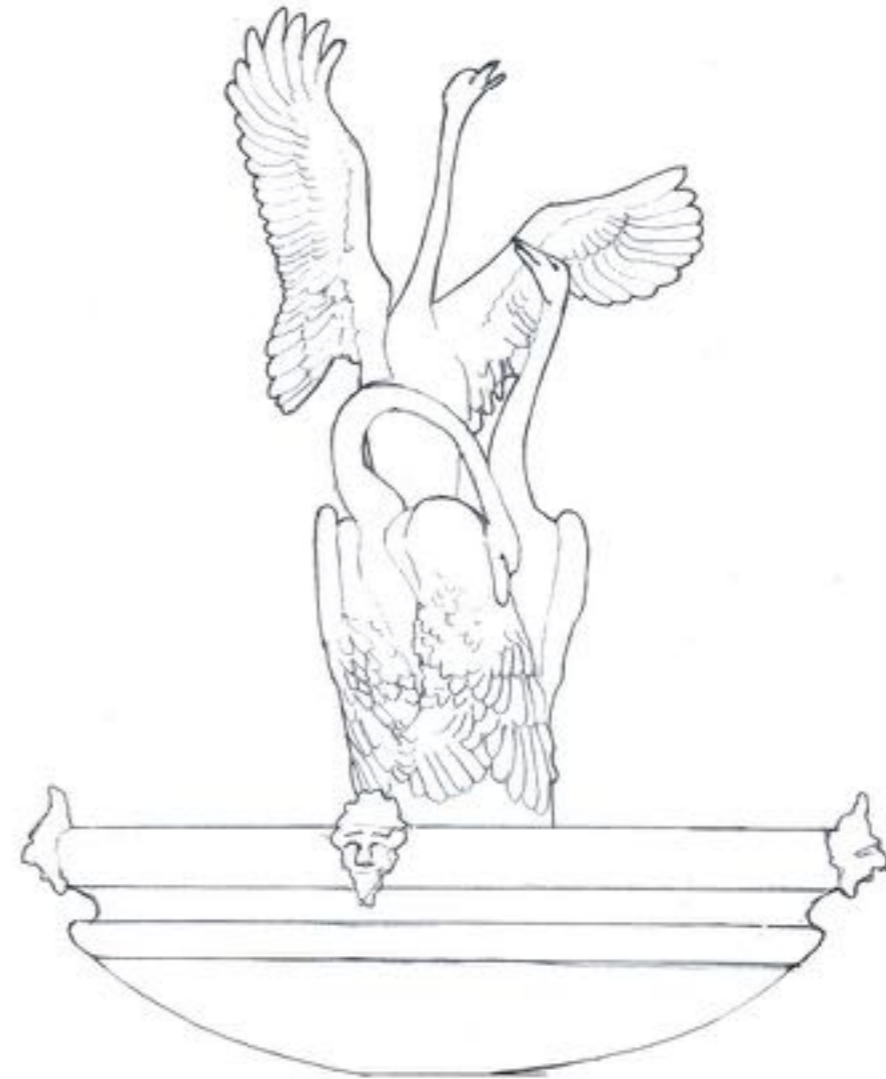
SIZE COMPARISON OF THE TWO FOUNTAIN TOPS

ORIGINAL HERON SCULPTURE 1892



TRACING FROM PHOTOGRAPH CIRCA 1890

TRIPLE SWAN SCULPTURE 1989



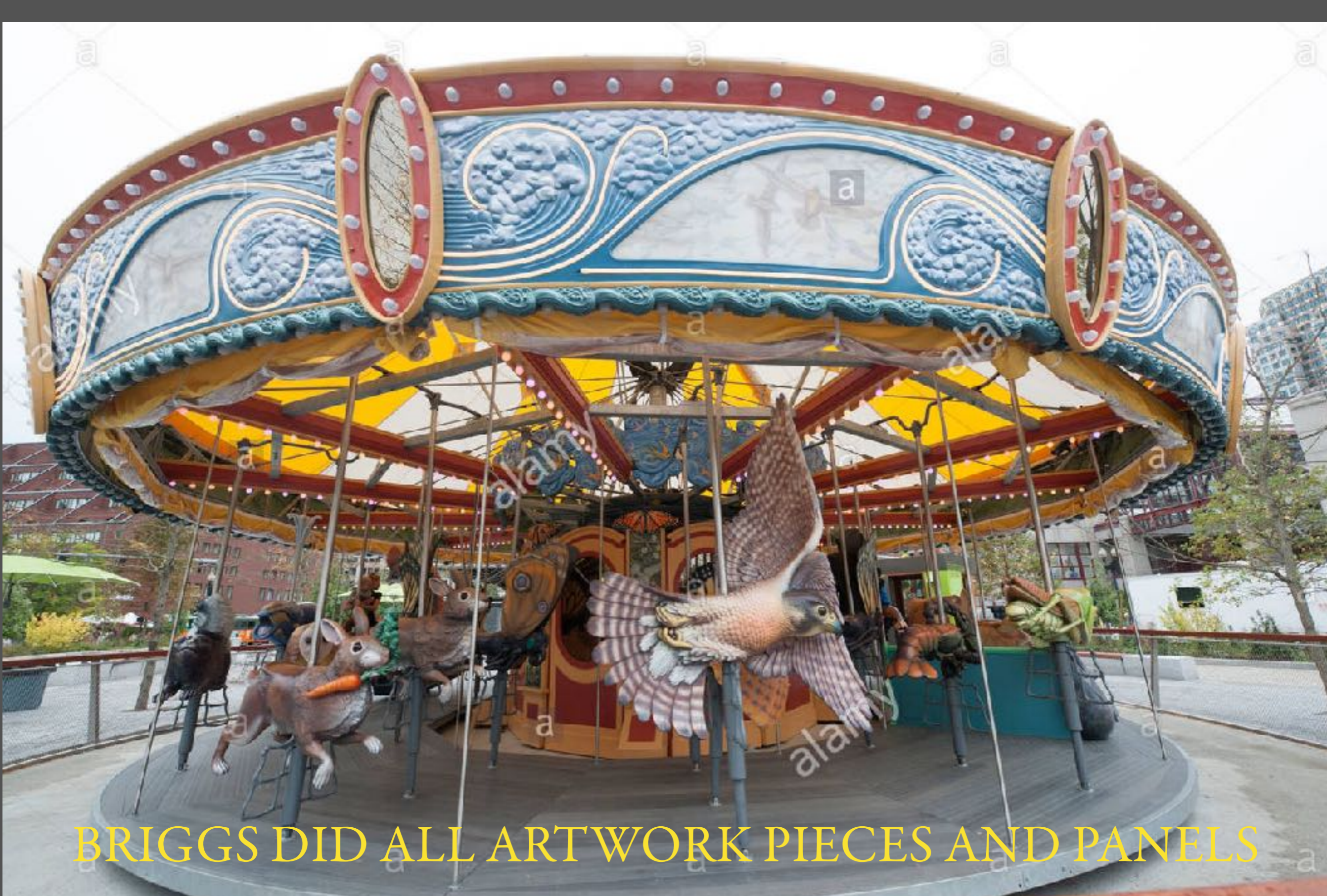
TRACING FROM PHOTOGRAPH FROM 2018

SWAN FOUNTAIN



JEFF BRIGGS
LOCAL SCULPTOR

1889 INSTALLED



BRIGGS DID ALL ARTWORK PIECES AND PANELS

GREENWAY CAROUSEL

BOSTON

CPC REQUEST FOUNTAIN

TO REMOVE, CLEAN, MAKE MINOR
REPAIRS and ADD FINISHES for a
LONG LIFE. REINSTALL ON A THE BASE.

CASSIDY BROTHERS FOUNDRY
ROWLEY

CPC ASK

\$126,000 BID

GRANITE POND EDGE

PROVIDE A LOCATION WHERE
GIFTING CAN BE ACKNOWLEDGED

ESTABLISH A MEMORIAL
TO HOLD THE
CORPORATE MEMORY

CPC ASK
\$ 132,023 BID









We have reached a critical point

CLEAN AND STABILIZE THE WATER LEVEL AT FROG POND

QUANTIFY THE PROBLEM

WATER SUPPLY

EXCESS WATER OVERFLOW

ENCAPSULATE THE IMPURITIES

GRADE THE BOTTOM

GRANITE EDGE AT THE

WALK/ WATER INTERFACE

WATER SUPPLY

TWO SHALLOW WELLS
AT THE PONDS EDGE

CPC ASK

\$ 40,000

QUANTIFY THE PROBLEM

BATHYMETRIC SURVEY

DETERMINE WHAT IS IN THE POND
AND SURROUNDING IT

CPC ASK

\$13,812

THANK YOU

1803

TRAVELING COURT DESIRES A NEW PLACE
TO CONDUCT BUSINESS. NEWBURYPORT
IS AN EQUAL PARTNER IN BUILDING
TO SERVE BOTH

NEEDING A PLACE:
CITY PROPOSES PLEASANT STREET.
COURT DECLINES, HEAD OF GREEN STREET
BECAUSE THE CITY, THRU BARTLET
HAD MADE IT BEAUTIFUL

NEEDING AN ARCHITECT:
THE POLICE CHIEF OF BOSTON
CHARLES BULFINCH



1763-1844



HANNAH APTHORP
GRANDPARENTS GREENLEAF

1767-1841

CHARLES AND HANNAH BULFINCH



BUILT 1789

CHARLES BULFINCH ARCHITECT
MASSACHUSETTS STATE HOUSE

AGE 26



GRIFFIN/LEANNA 2017

CONCEIVED FROM BULFINCH'S PLANS

AGE 41

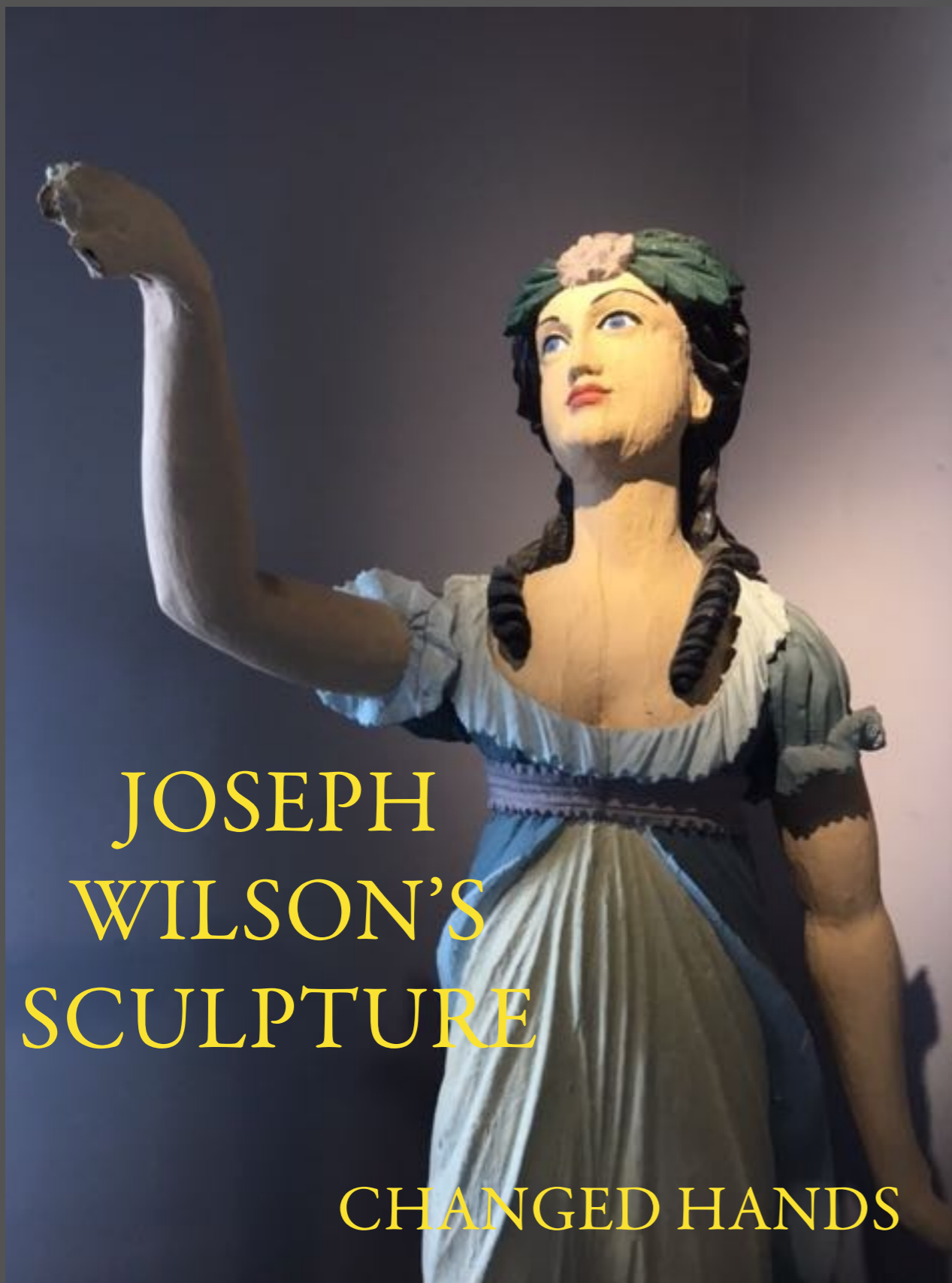


GRIFFIN

ESSEX COUNTY COURTHOUSE
AT THE HEAD OF GREEN STREET



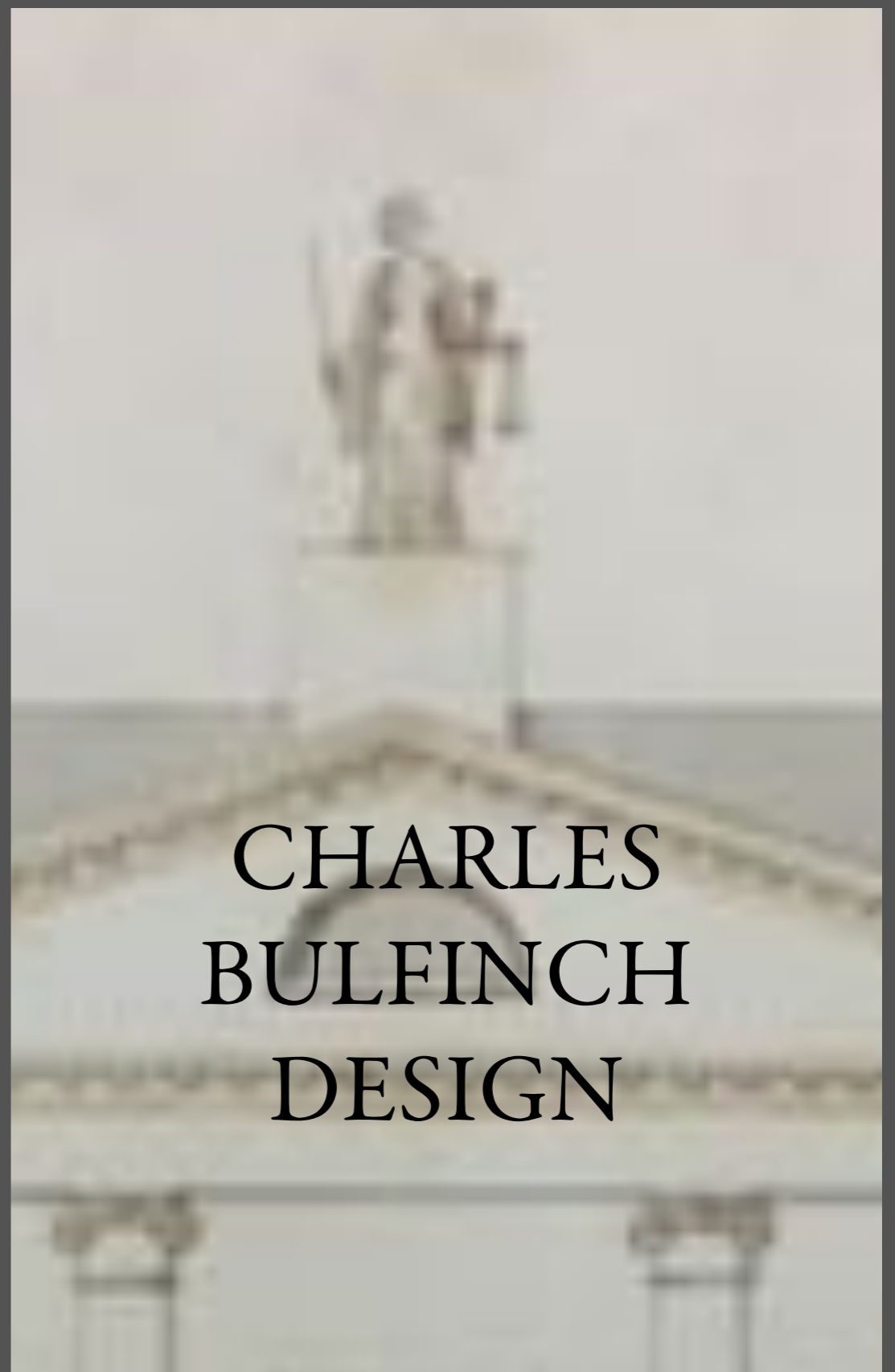
CHARLES BULFINCH'S ORIGINAL PLANS



JOSEPH
WILSON'S
SCULPTURE

CHANGED HANDS

JUSTICE FROM THE ORIGINAL ESSEX
COUNTY COURTHOUSE 1804 to 1854



CHARLES
BULFINCH
DESIGN

NEWBURYPORT
MARITIME MUSEUM

JOSEPH WILSON
8 STRONG STREET
SCULPTOR of NEWBURYPORT
1779-1857

TIMOTHY DEXTER'S
LARGE STATUES
DECORATING the DEXTER MANSION
FIGUREHEADS for SHIPS

JUSTICE from ESSEX COUNTY COURTHOUSE
Placed when age 25 Removed when age 75

Witnesses

John Dalrymple

Charles Richardson

November 4th 1823.

John Pritchard

N. Cleaveland

Robert Work

Saml Bates

GAOL
TO SUPPORT
BULFINCH
COURTHOUSE
AS BULFINCH
DESIGNED IT

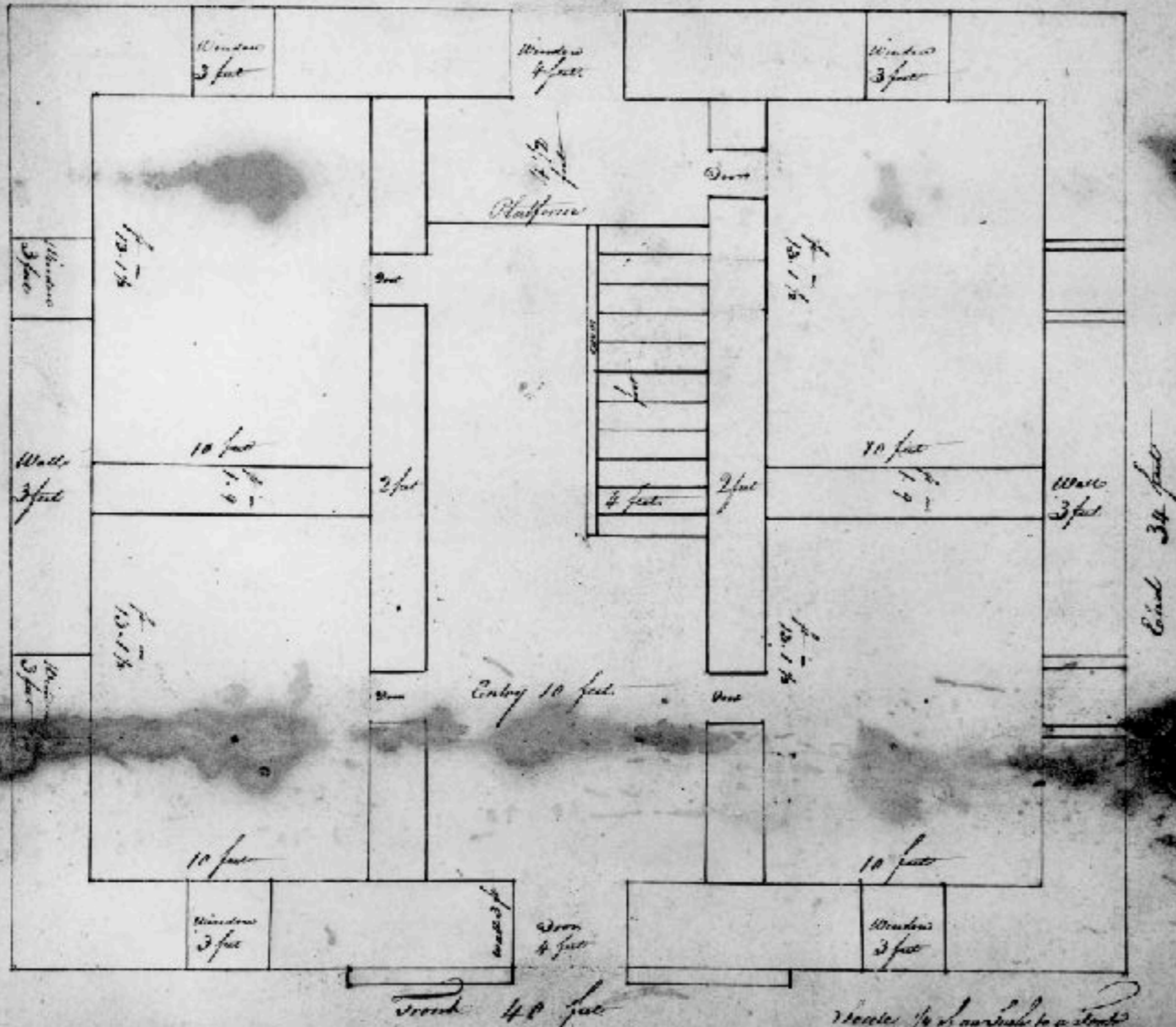
November 4, 1823

John Dalrymple

CONTRACT
BETWEEN
COUNTY
AND
GRANITE
SUPPLIER

NOVEMBER 4 1823

DATES and TITLES
IN
STUART PARKS
HANDWRITING

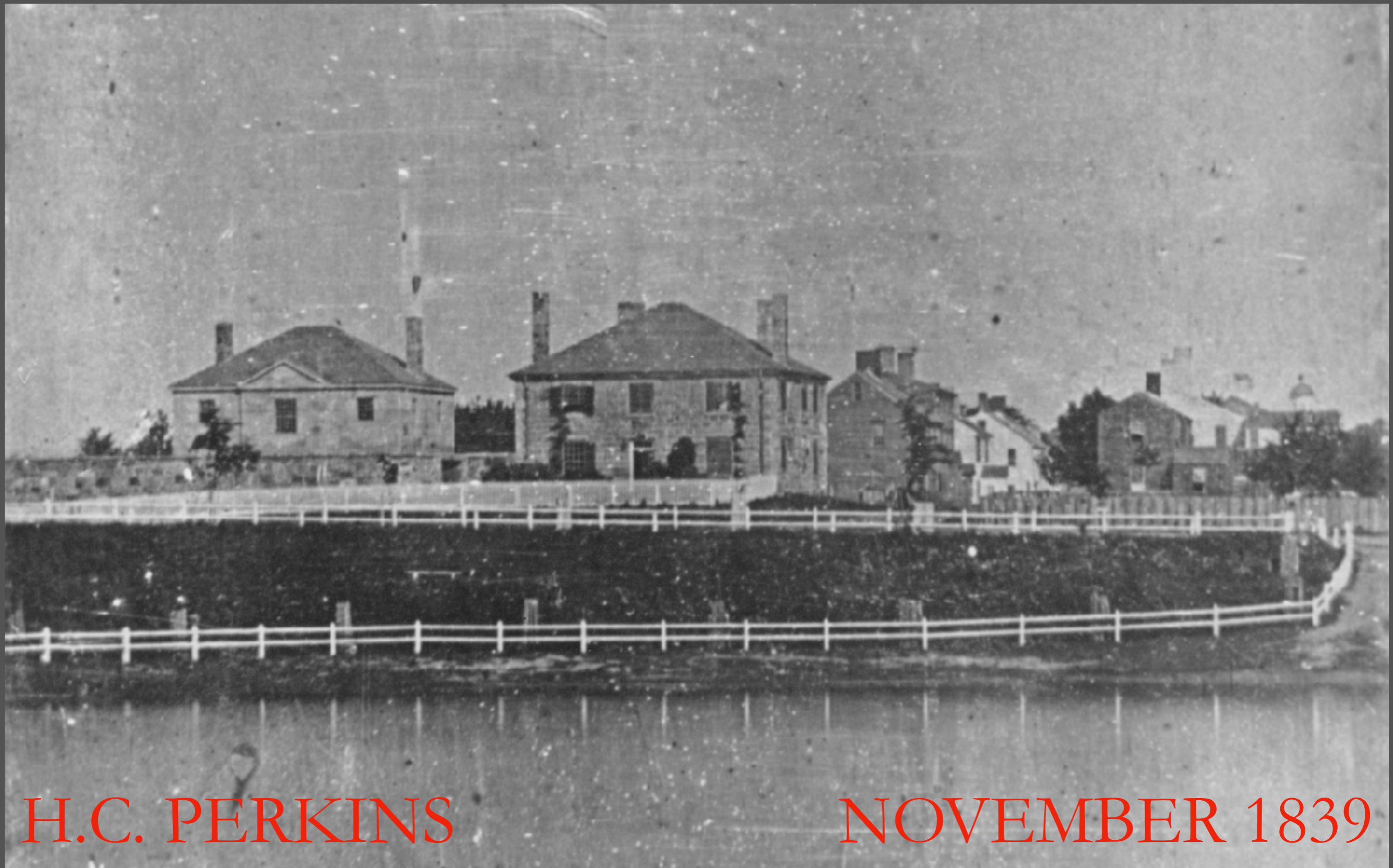


BR
E
NY #1
1823 Plan II



1823

STUART PARK ARCHITECT and BUILDER CREATES
ESSEX COUNTY GAOL



H.C. PERKINS

NOVEMBER 1839

ESSEX COUNTY
GAOL 1825

OLDEST LANDSCAPE PHOTO
TAKEN IN THE AMERICAS



1825 GAOL

Newburyport, March 2^d/1831

To the Board of selectmen
for the Town of Newburyport

Gentlemen,

The subscribers respectfully request that you will insert in the Warrant for the next Town Meeting an article to this effect - *viz* - "to see if the Town will Vote to rebuild the Stone wall, and repair the embankments on the Southern side of the Mall -"

Wm. Parker

Wm. D. Loring

William B. Baker

Mr. Bluntin

Wm. Adams

Henry C. Chapman

John B. Colman

John Stearns

John B. Colman

Edw. Mosely

Jacob H. Hays

Wm. L. Smith

Joseph Roberts

N. J. Hall

John Stone Jr

E. H. Quisenberry

Geo. Greenleaf

Wm. D. Burke

J. H. Pierce

John Adams

Samuel H. Knight

Geo. Lambert

Wm. Adams

Wm. C. Brewster

J. M. Currier

B. W. Hudson

W. A. Minkins

Samuel Bulech

de Davenport

Amos Tappan

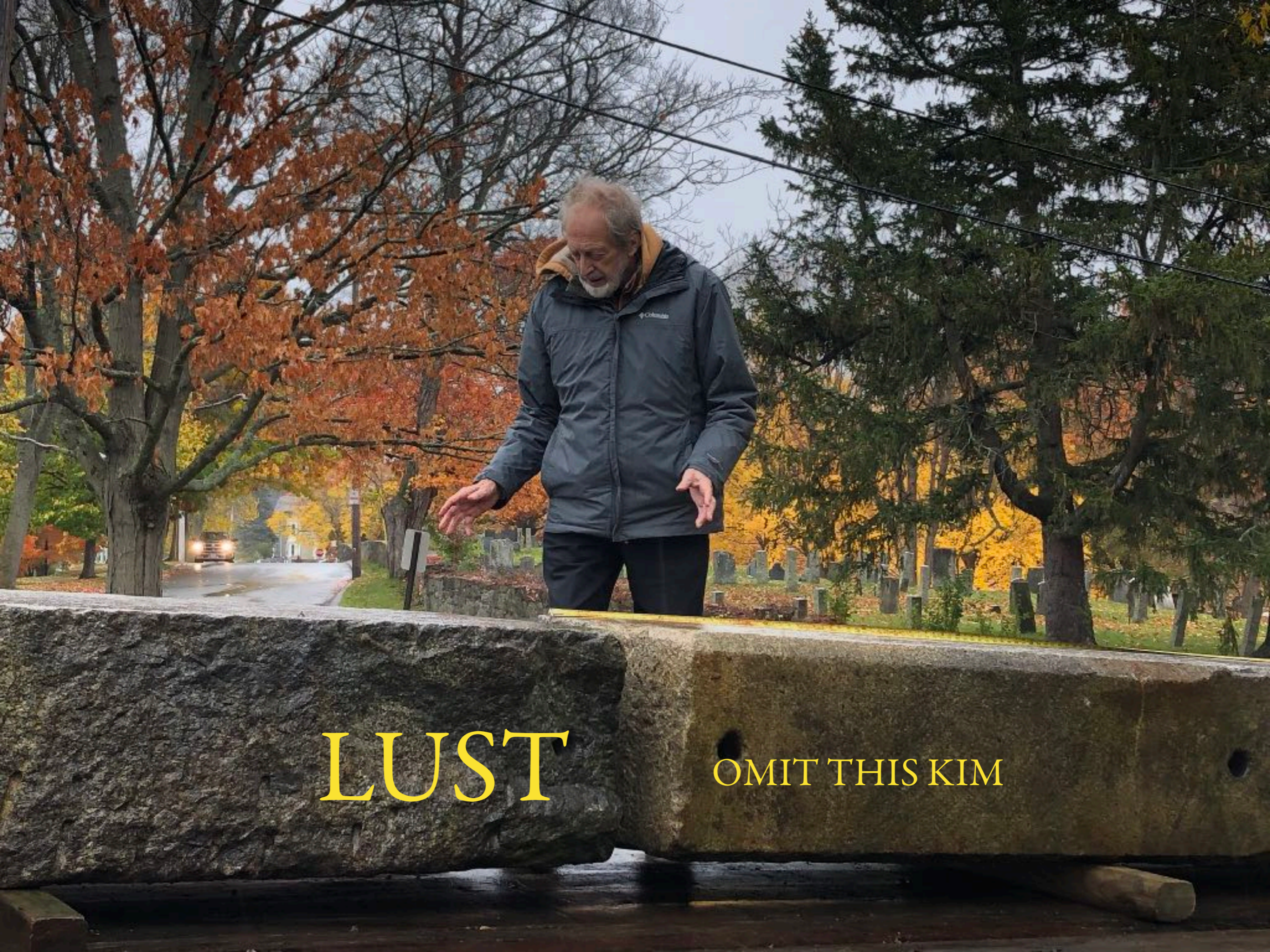
W. A. Minkins

1838

THROUGHOUT NEWBURYPORT'S HISTORY
THE CITY'S LEADERS VOTED TO IMPROVE THE MALL



Circa 1892
WHAT THEY HAD



LUST

OMIT THIS KIM



(PART)
PRINCIPAL BENEFACTORS
IMPORTANT ADVISORS

1719	NATHANIAL TRACY	BEAUTIFICATION
1802	WILLIAM BARTLET	PROMENADE
1804	CHARLES BULFINCH	COURTHOUSE ARCHITECT
1825	STUART PARK	GAOL ARCHITECT
1879	DANIEL TENNEY	WASHINGTON
1881	EDWARD S MOSLEY	POND LAND/ FOUNTAIN
1887	CHARLES ELLIOT	LANDSCAPE ARCHITECT MIA
1887	FRANCIS PIKE	MIA. CHAIR
1898TAGGARD	FOUNTAIN
1914	ARTHUR SHIRTLEFT	LANDSCAPE ARCHITECT
DATE	MORRILL	RESTORATION

FROG POND

ALL PREVIOUS REPAIRS HAVE FAILED
WASTING TIME AND RESOURCES



ASSEMBLED NEW TEAM
HAVE AN AFFORDABLE
PERMANITE SOLUTION

WORKING TO CONFIRM
AND FINANCE

VLADIMIR NOVOTNY