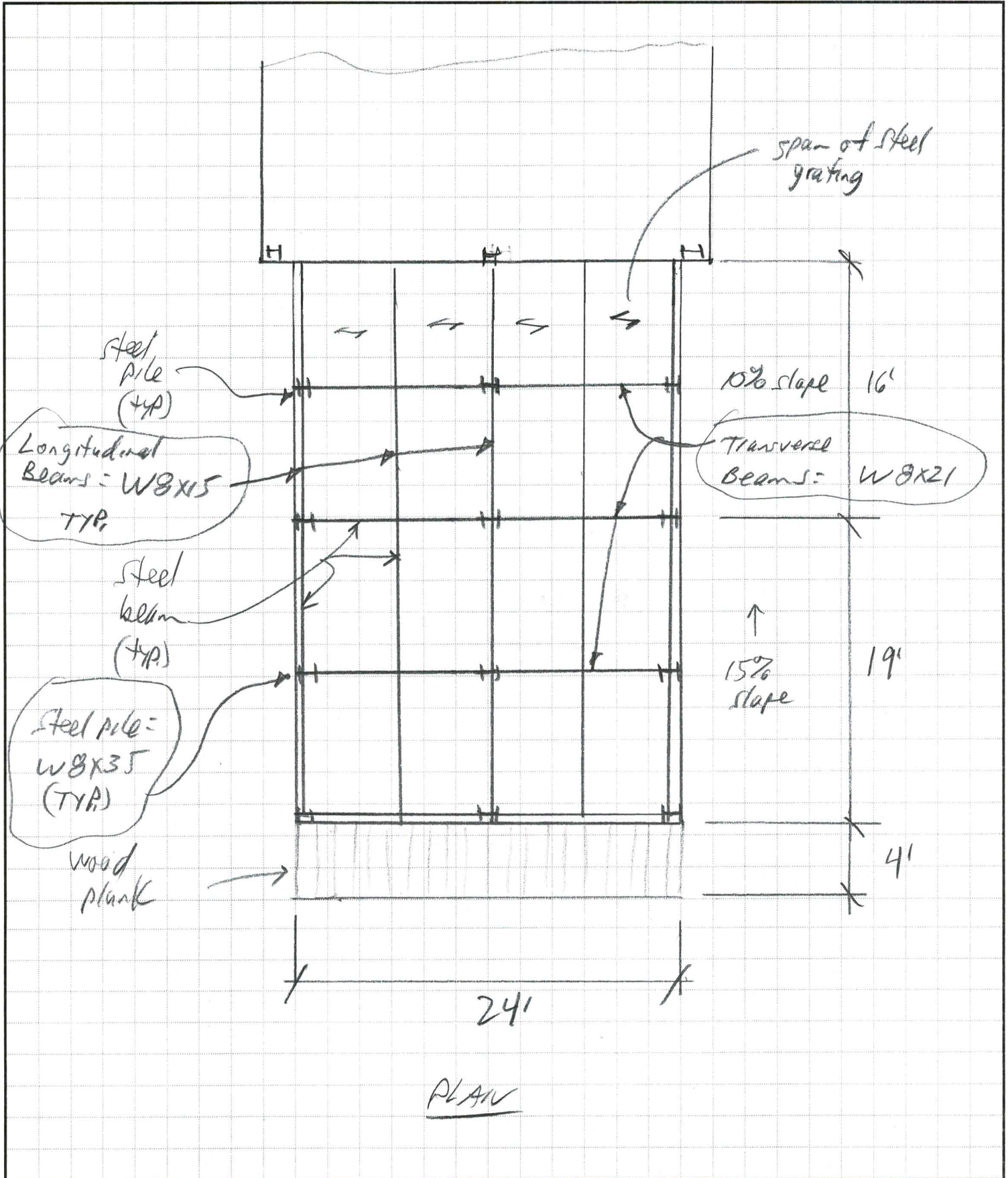


**FIX ENGINEERING**

2 Silver Ledge Road  
Newbury, MA 01951  
978-462-4331  
Email: jfix@comcast.net

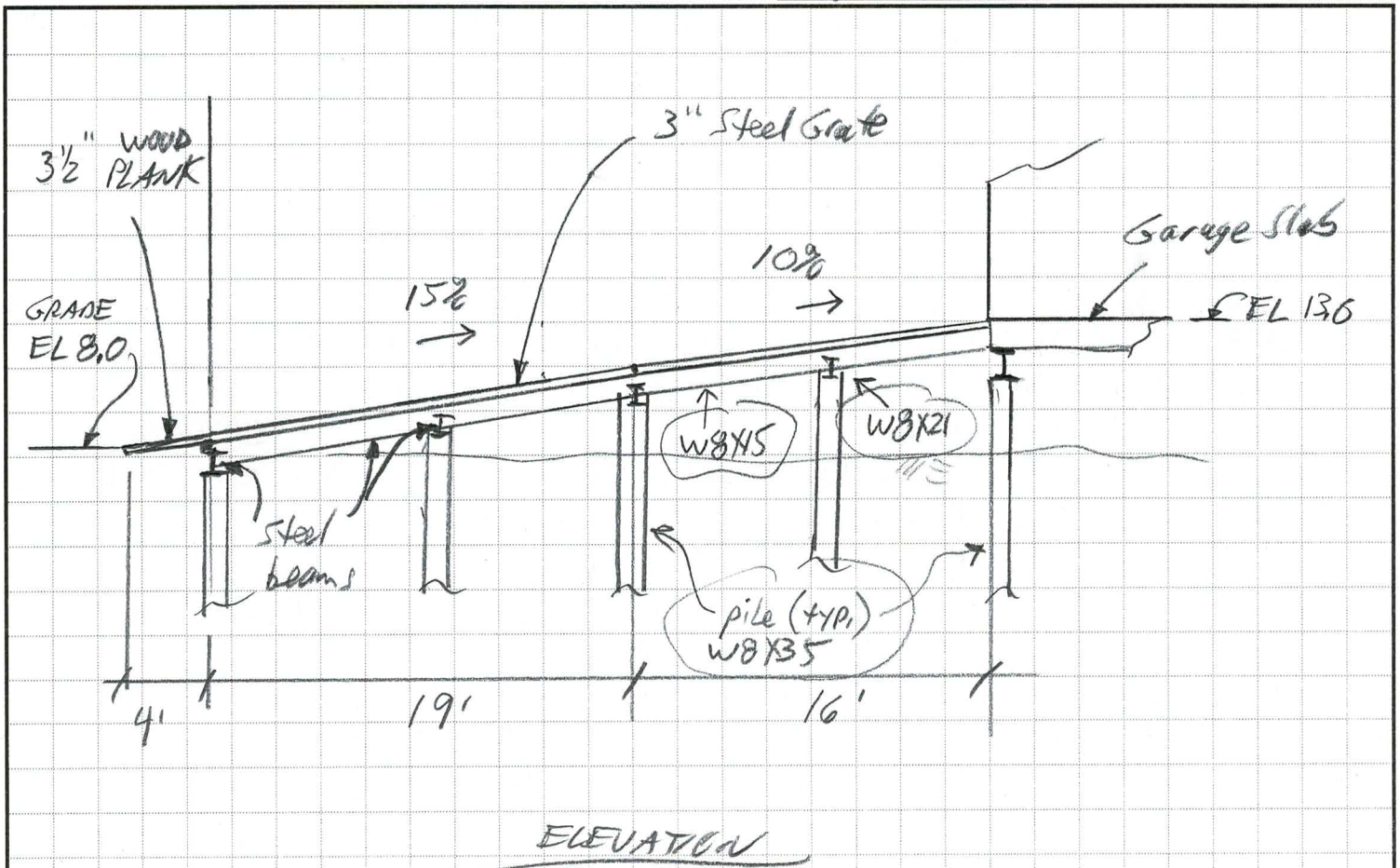
JOB 6 LOUVE  
SHEET NO. 1 OF 2  
CALCULATED BY JFE DATE 3/5/20  
REV'D  
CHECKED BY JFE DATE 7/13/20  
SCALE 1/8" = 1'-0"



**FIX ENGINEERING**

2 Silver Ledge Road  
 Newbury, MA 01951  
 978-462-4331  
 Email: jfix@comcast.net

JOB 6 LOUIE  
 SHEET NO. 2 OF 2  
 CALCULATED BY JIF DATE 3/5/20  
 CHECKED BY Rev'd JIF DATE 7/13/20  
 SCALE 1/8" = 1'-0"

**Notes:**

- 3-inch steel grating is to be GHB-series galvanized welded bar grating (19-W-4) with 3" x 1/4" bearing bars (serrated) spaced at 1 3/16" with cross bars spaced at 4" (Manufacturer: McNichols Co.). Grating is to be fastened to, and directly supported by, W8x15 longitudinal beams.
- W8x15 longitudinal beams are I-shaped beams, 8 1/8" deep with 4" wide flanges
- The W8x15 longitudinal beams are to be supported by W8x21 transverse beams. W8x21 beams are I-shaped beams, 8 1/4" deep with 5 1/4" wide flanges.
- The longitudinal W8x15 beams can sit on top of the W8x21 beams; or the W8x15 beams can be flush-framed to the W8x21 beams.