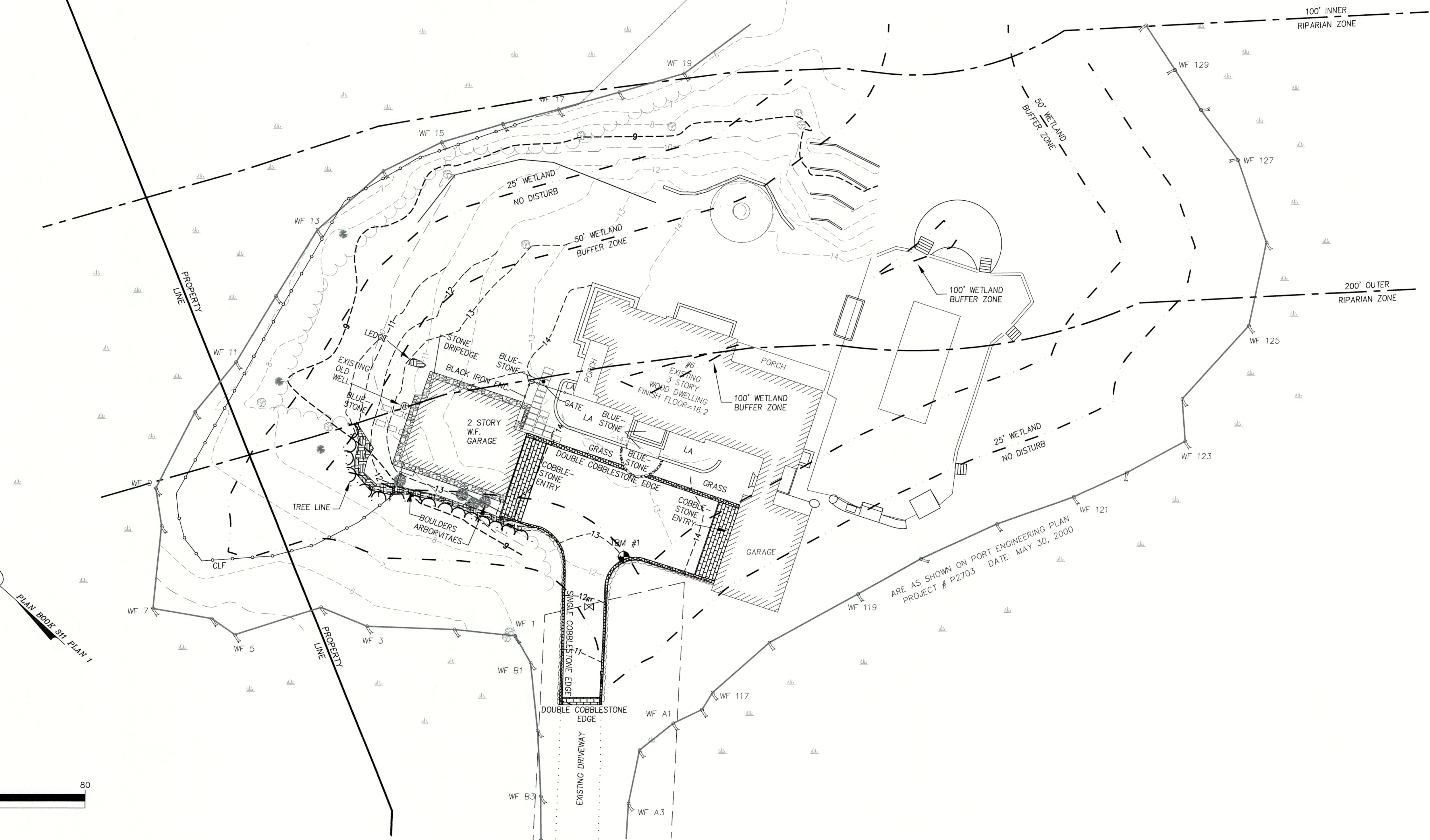


LOCUS MAP
N.T.S.

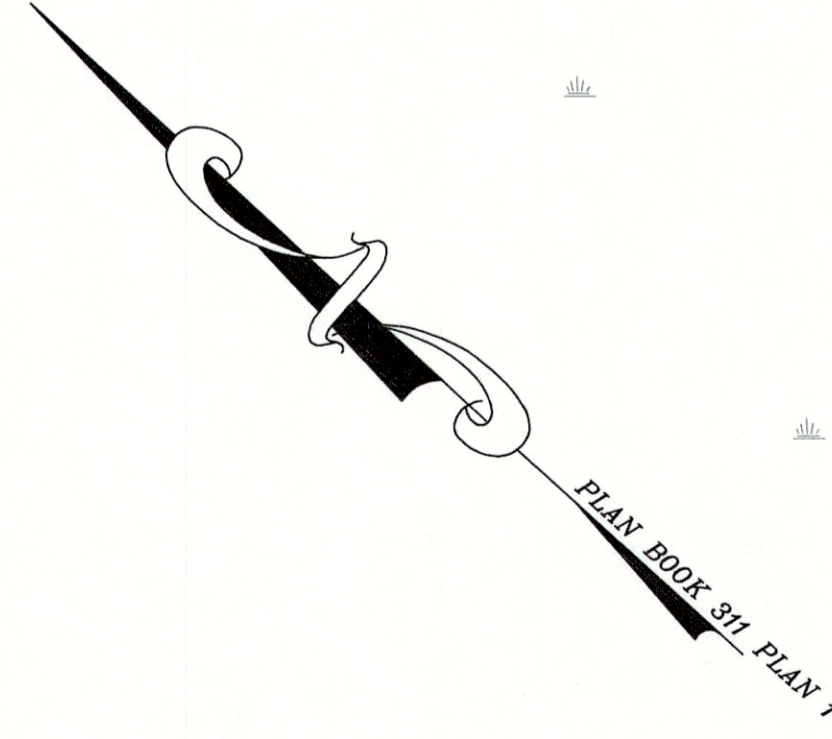
VERTICAL DATUM
 TBM #1
 MAG NAIL SET IN PAVED DRIVEWAY
 ELE.=12.46 (N.A.V.D. OF 1988)
 (TRIMBLE R10 GPS RECEIVER)

MERRIMACK RIVER

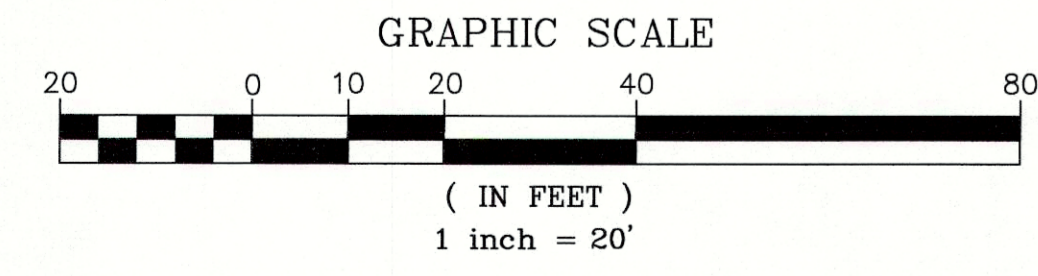
WETLAND DELINEATED BY:
 KAIROS ENVIRONMENTAL, INC.
 P.O. BOX 1088
 NEWBURYPORT, MA 01950
 (978) 388-6566
 (SERIES #116-#130 DELINEATED IN: MAY 2000)
 (SERIES #1-#19 DELINEATED IN: SEPT. 2016)
 (SERIES #A & #B DELINEATED IN: JAN. 2017)



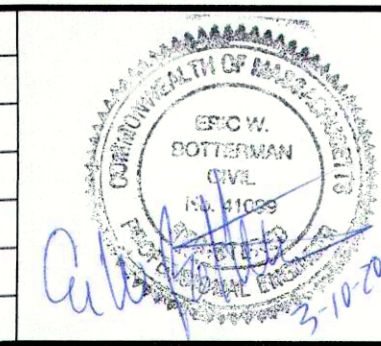
- LEGEND**
- - - - - 10 - - - - - EXISTING CONTOURS
 - - - - - 10 - - - - - PROPOSED GRADING
 - - - - - 9 - - - - - FEMA FLOOD PLAIN
 - - - - - 9 - - - - - EXISTING STONE WALL
 - - - - - SF - - - - - EROSION CONTROL
 - - - - - RIPARIAN BUFFER LINE
 - - - - - WETLAND LINE
 - - - - - WETLAND BUFFER LINE
 - - - - - WETLAND FLAG



PLAN BOOK SH PLAN 1



NO.	DATE	DESCRIPTION	BY



MEI MILLENNIUM ENGINEERING, INC.
 ENGINEERING AND LAND SURVEYING
 62 ELM ST. SALISBURY, MA 01952 (978) 463-8980
 13 HAMPTON RD., P.O. BOX 745 EXETER, NH 03833 (603) 778-0528

**PLAN TO ACCOMPANY A
 REQUEST FOR
 CERTIFICATE OF COMPLIANCE**
 IN
NEWBURYPORT, MA

PREPARED FOR
NICHOLE NADEAU
 287-1/2 HIGH STREET
 NEWBURYPORT, MA. 01950

SHOWING
AS-BUILT IMPROVEMENTS
 6 BAYNE LANE
 (MAP 72, LOT 34)

SCALE: AS NOTED	DESG. BY: C.M.Y.	PROJECT: M162994
DATE: MARCH 10, 2020	CHKD. BY: E.W.B.	SHEET: 1 OF 1