




EXISTING FRONT ELEVATION

1/4"=1'-0"

 ARCHITECTURAL DRAWINGS DESIGNER RONALD WORDEN	32 FORRESTER ST NEWBURYPORT MA	
	4/21/2021	PROPOSED ADDITION 1 OF 6





EXISTING LEFT ELEVATION

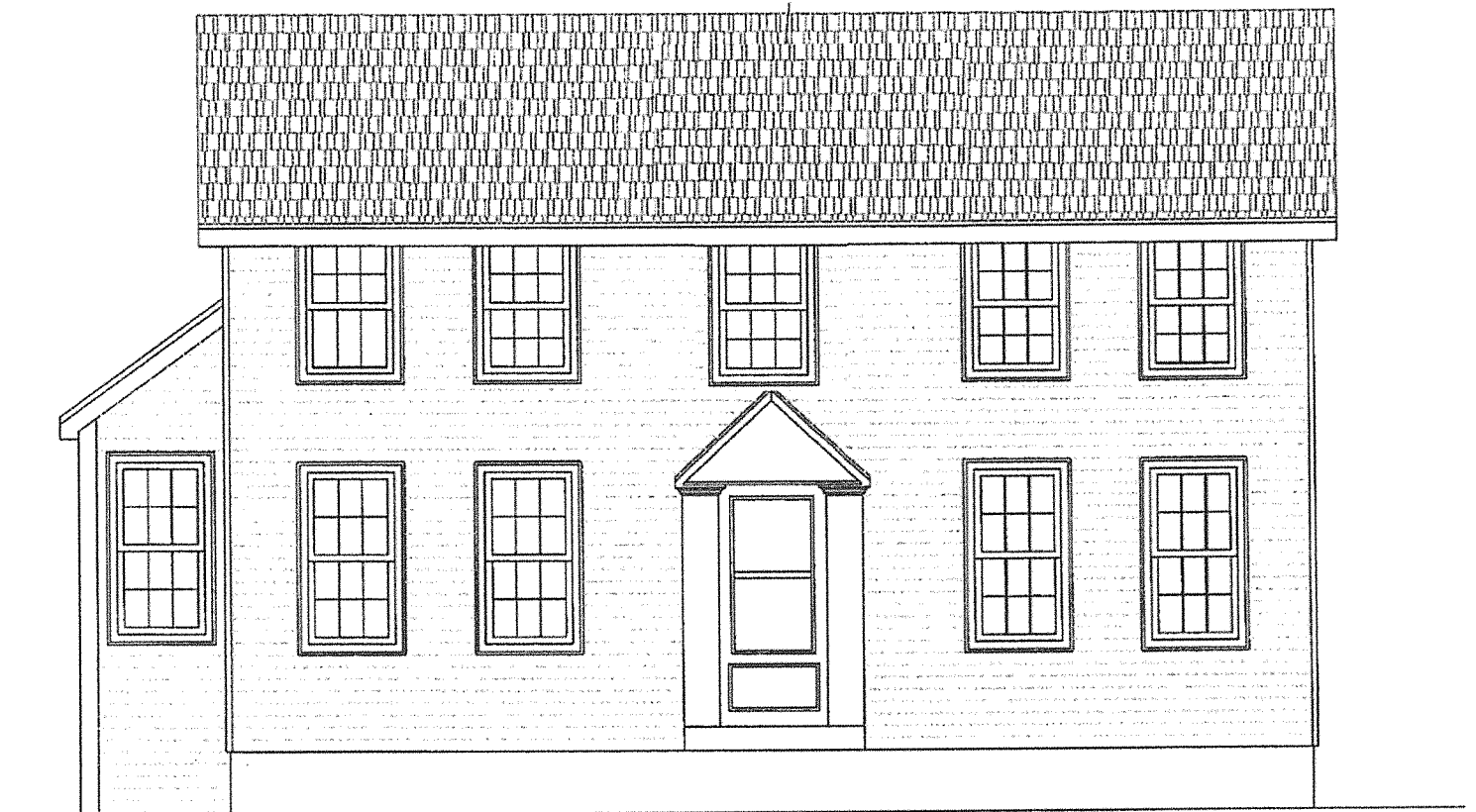
1/4"=1'-0"



EXISTING REAR ELEVATION

1/4"=1'-0"

32 Forrester Street
Newburyport MA



Summary of modifications within historical designated areas.

Total area = 2132 sqft

Front of house = 432 sqft

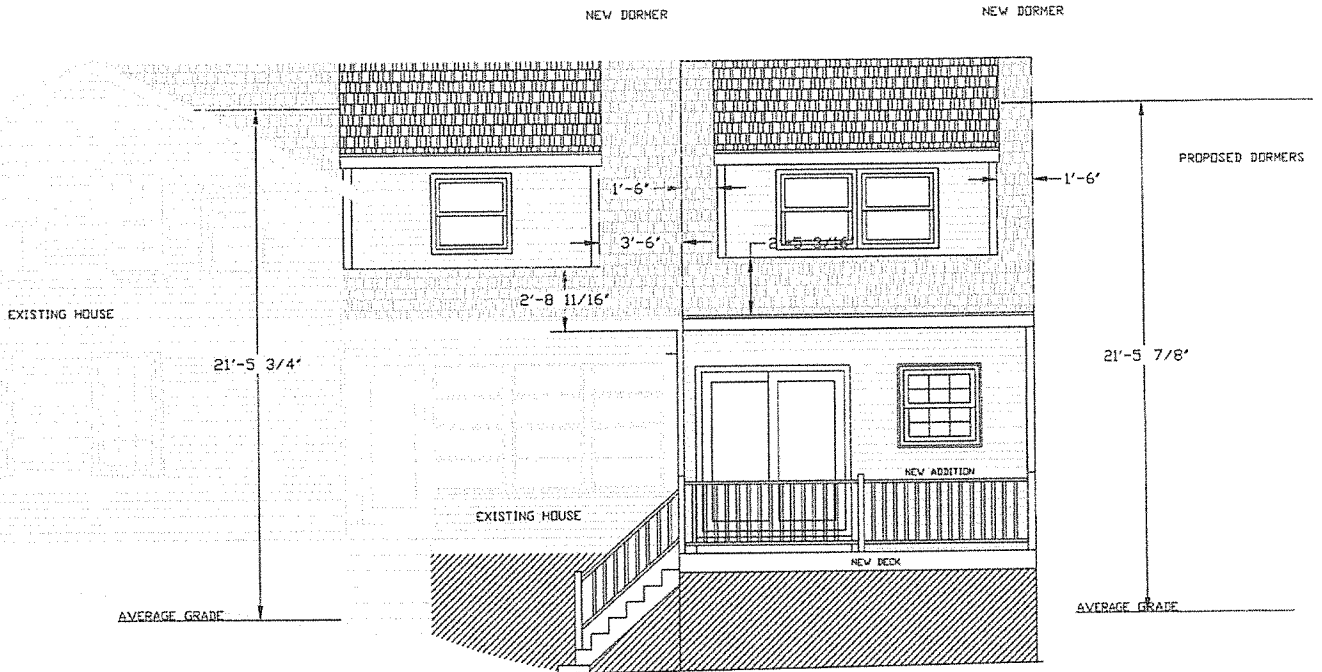
Right side = 568.5 sqft

Left side = 572 sqft total modifying 30 sqft removing 3 windows

Rear of house = Existing gable 555 sqft with 413 sqft of effected area
allowing for integration for new addition.

Total percentage of change 20.7%

Proposed right side elevations Porch not historic (~1980)



RIGHT SIDE ELEVATION
 V/ NEW ADDITION AND DECK
 1/4"=1'-0"
 2

Proposed left side elevations
Total sqft = 572 sqft modifying 30 sqft
removing 3 windows.

