

32 Forrester Street
Newburyport MA



Summary of modifications within historical designated areas.

Total area = 2132 sqft

Front of house = 432 sqft

Right side = 568.5 sqft

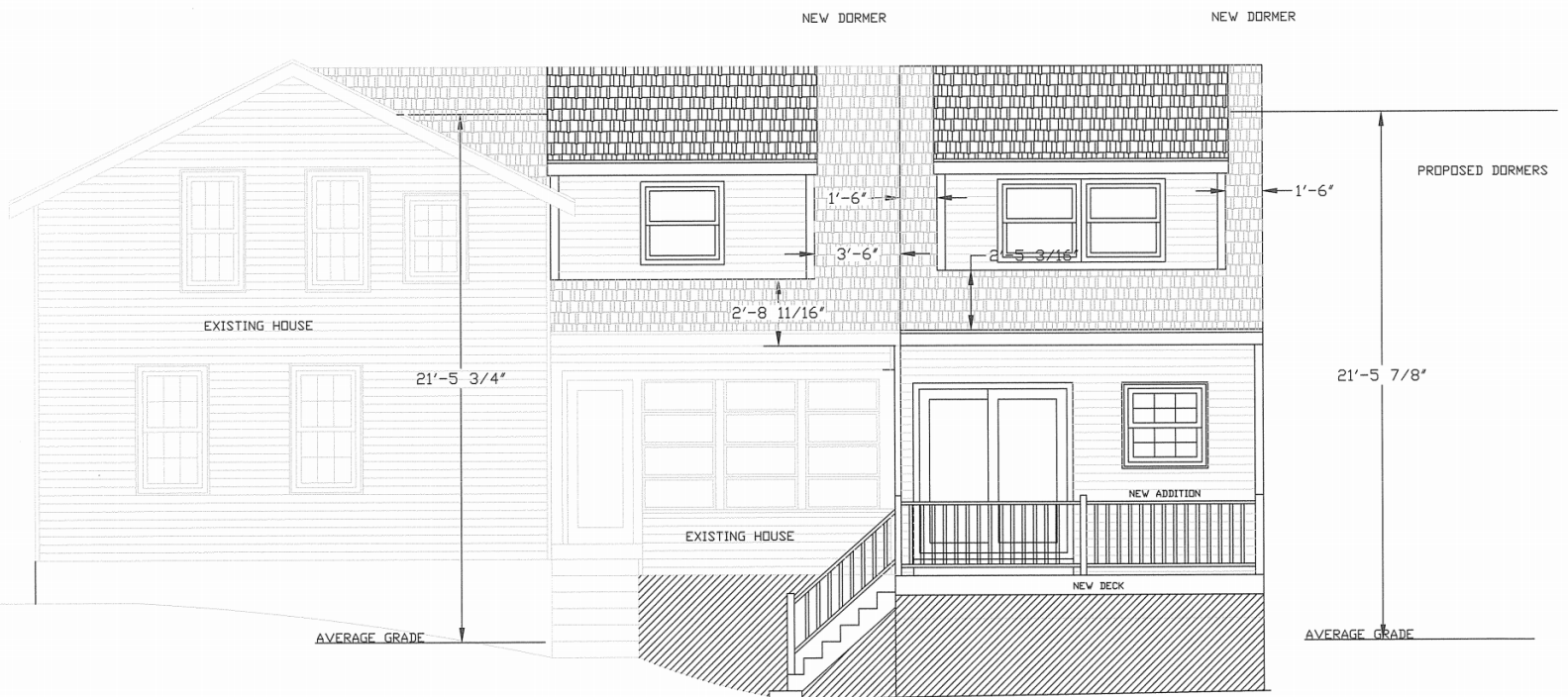
Left side = 572 sqft total modifying 30 sqft removing 3 windows

Rear of house = Existing gable 555 sqft with 413 sqft of effected area
allowing for integration for new addition.

Total percentage of change 20.7%

Proposed right side elevations

Porch not historic (~1980)



RIGHT SIDE ELEVATION
W/ NEW ADDITION AND DECK

1/4"=1'-0"

Proposed left side elevations
Total sqft = 572 sqft modifying 30 sqft
removing 3 windows.



Proposed rear elevations

Total sqft = Rear of house = Existing gable 555 sqft with 413 sqft of effected area allowing for integration for new addition.

