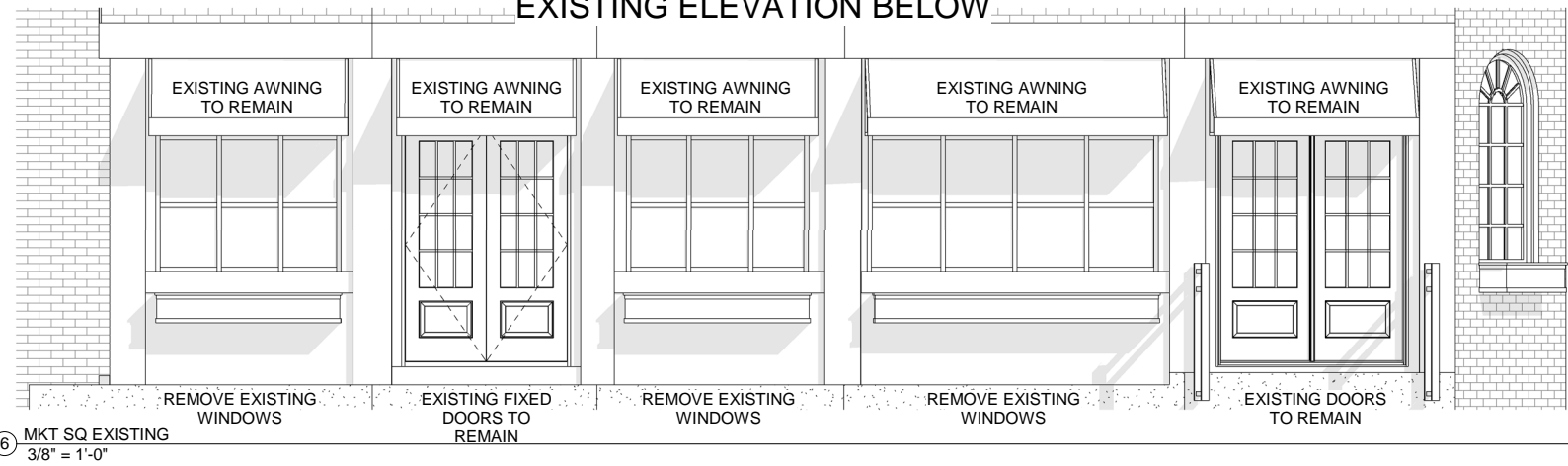


EXISTING ELEVATION BELOW



TRANSOM AND BIFOLD WINDOW NOTES:
 BIFOLD PAINTED WOOD WINDOWS
 PAINT TO MATCH EXISTING DOORS AND WINDOWS
 MUNTIN BARS ON TRANSOM WINDOWS AND BI-FOLD WINDOWS TO MATCH EXISTING MUNTIN BARS ON INN STREET ELEVATION
 G.C. TO SUBMIT SHOP DRAWINGS FOR OUT-SWING BI-FOLD WINDOWS FOR REVIEW AND APPROVAL PRIOR



www.KWHdesign.net

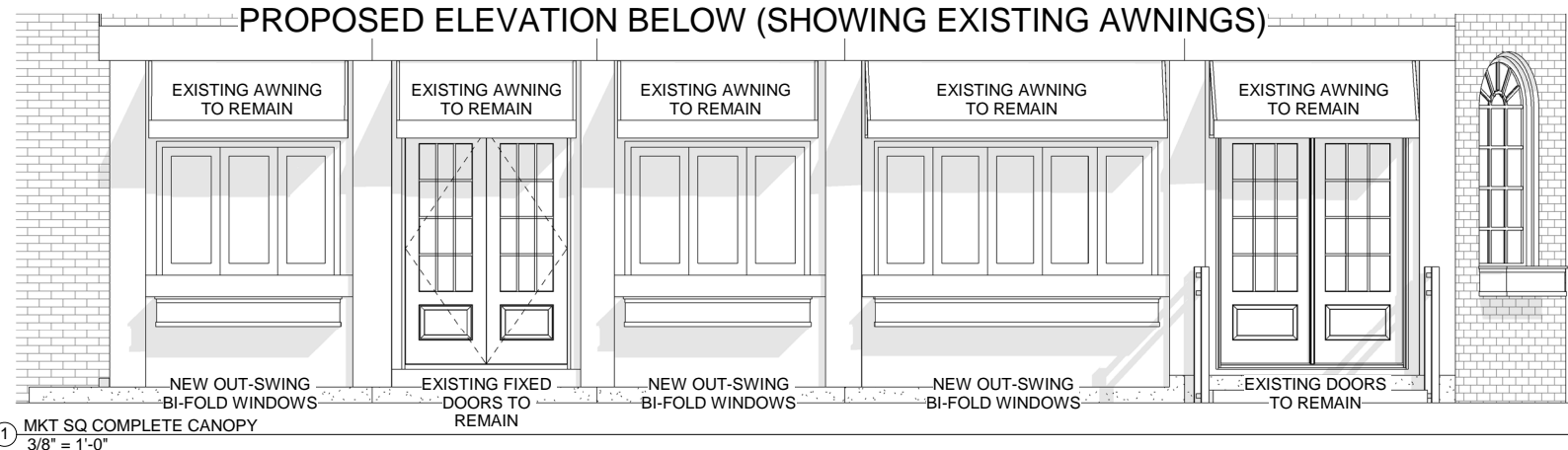
Gordon Greenfield, AIA
 Consulting Architect
 4 Cook Street
 Charlestown, MA

(617) 241-7302
 Gordon.Greenfield@gmail.com

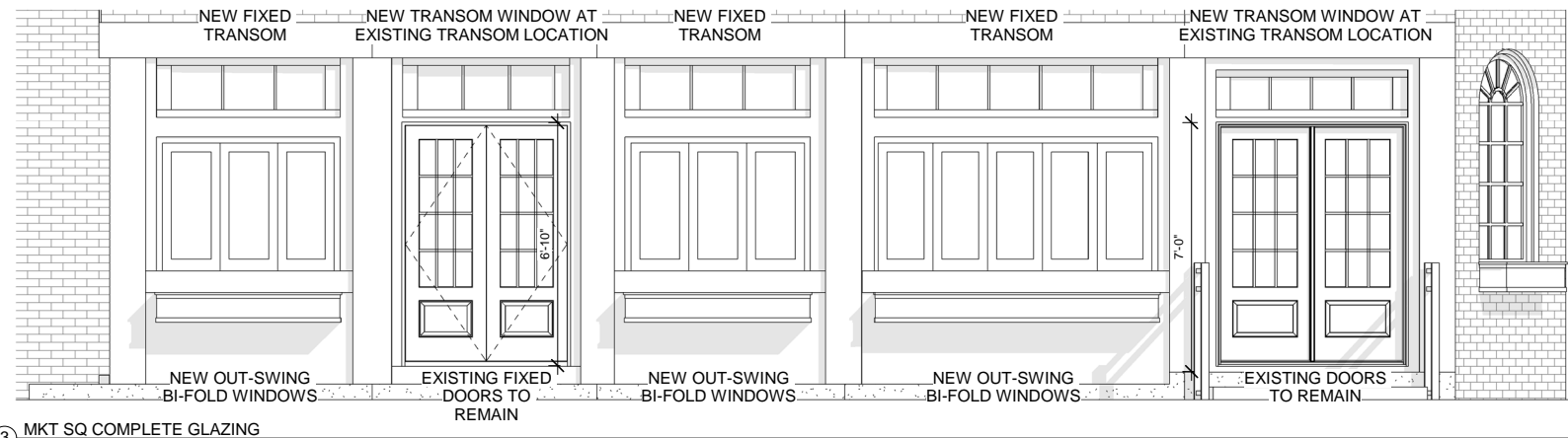


Dave Callan & John Santaniello
 VERA Pizza Napoletana Ristorante Bar
 31-35 Market Sq, Unit 1
 Newburyport, MA 01950

PROPOSED ELEVATION BELOW (SHOWING EXISTING AWNINGS)



PROPOSED ELEVATION BELOW (EXISTING AWNINGS WILL REMAIN, BUT ARE HIDDEN FROM VIEW IN THIS ELEVATION)



PLEASE NOTE: ALL EXISTING AWNINGS WILL REMAIN (EVEN THOUGH THEY MAY BE HIDDEN FROM VIEW IN SOME ELEVATIONS IN ORDER TO MAKE THE PROPOSED TRANSOM WINDOWS VISIBLE).

REVISED 3-2-10

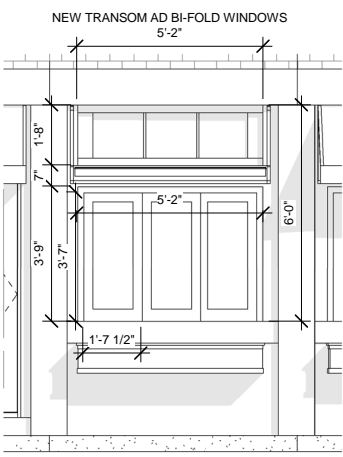
No.	Description	Date

VERA PIZZA PROGRESS SET WINDOW ELEVATIONS

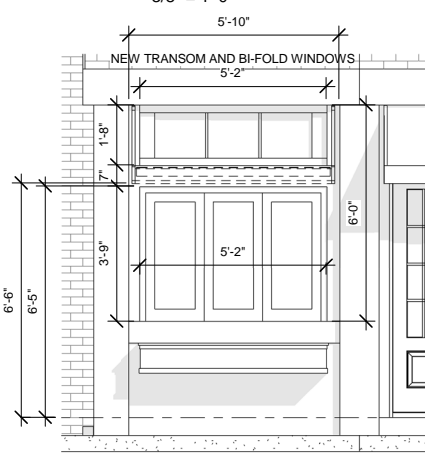
Project number: VNPR-A
 Date: 2020-05-19
 Drawn by: Author
 Checked by: Checker

A2.02

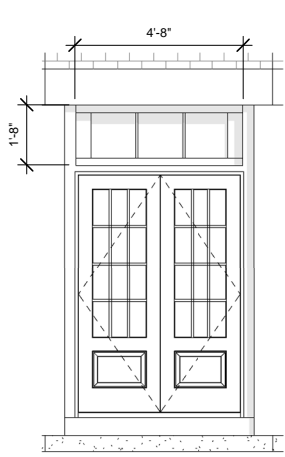
Scale: 3/8" = 1'-0"



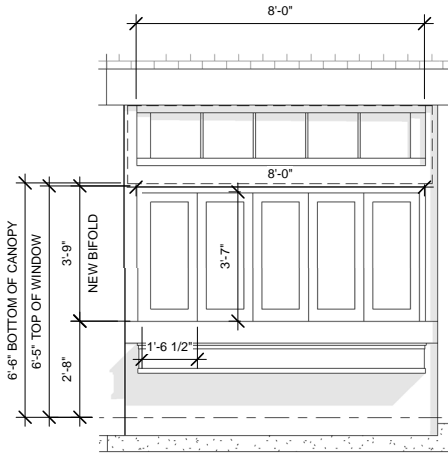
(B) MKT SQ ELEV - 'B' WINDOWS
 3/8" = 1'-0"



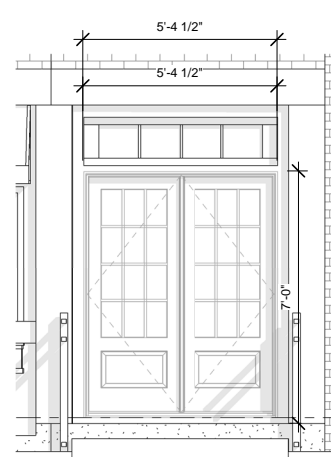
(A) MKT SQ ELEV - 'A' WINDOWS
 3/8" = 1'-0"



(4) MKT SQ E. FIXED DOOR
 3/8" = 1'-0"



(C) MKT SQ ELEV - 'C' WINDOWS
 3/8" = 1'-0"

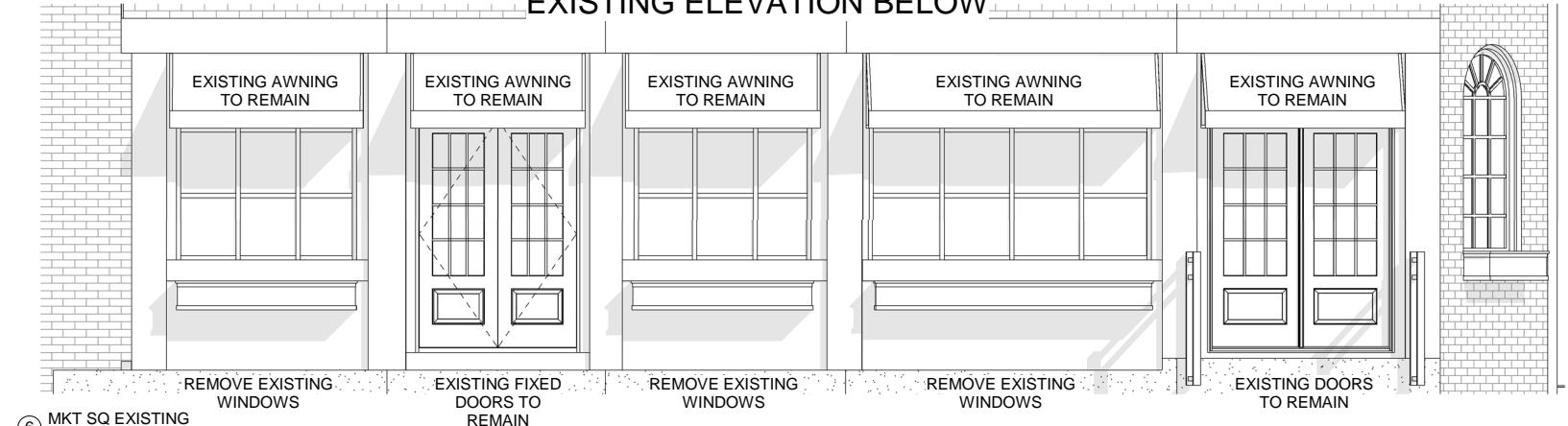


(2) MKT SQ ELEV - EXISTING DOOR
 3/8" = 1'-0"



(5) MKT SQ ELEV - FLAT-IRON
 3/8" = 1'-0"

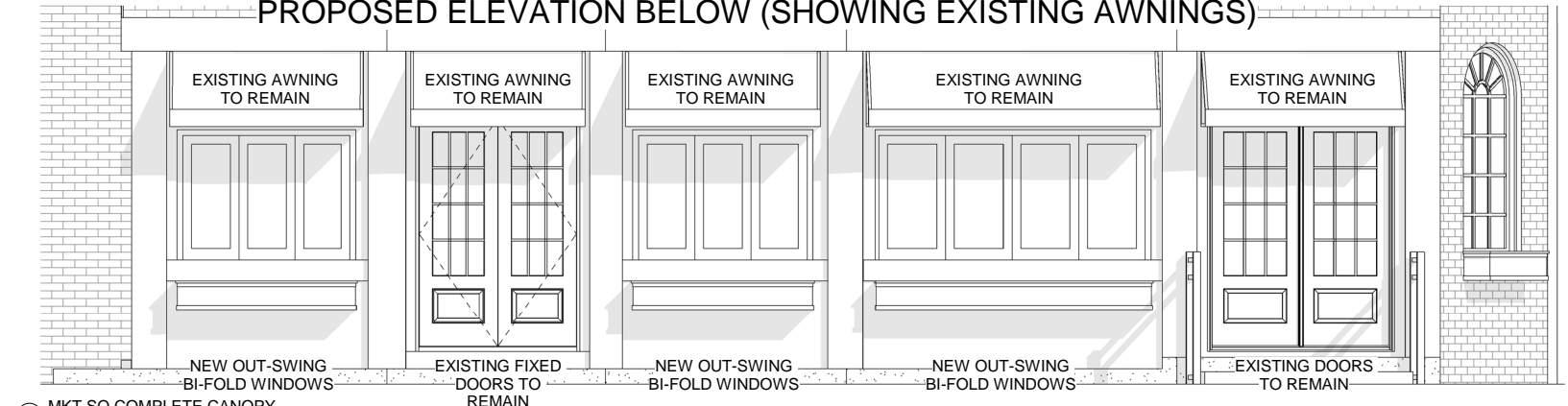
EXISTING ELEVATION BELOW



⑥ MKT SQ EXISTING
3/8" = 1'-0"

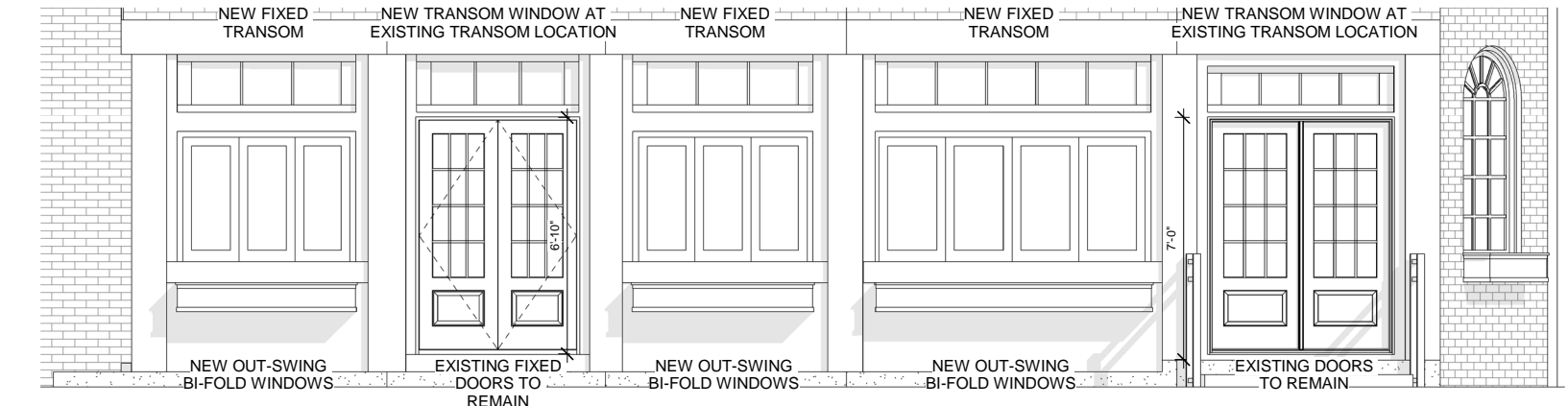
TRANSOM AND BIFOLD WINDOW NOTES:
 BIFOLDPAINTED WOOD WINDOWS
 PAINT TO MATCH EXISTING DOORS AND WINDOWS
 MUNTIN BARS ON TRANSOM WINDOWS AND BI-FOLD WINDOWS TO
 MATCH EXISTING MUNTIN BARS ON INN STREET ELEVATION
 G.C. TO SUBMIT SHOP DRAWINGS FOR OUT-SWING BI-FOLD
 WINDOWS FOR REVIEW AND APPROVAL PRIOR

PROPOSED ELEVATION BELOW (SHOWING EXISTING AWNINGS)



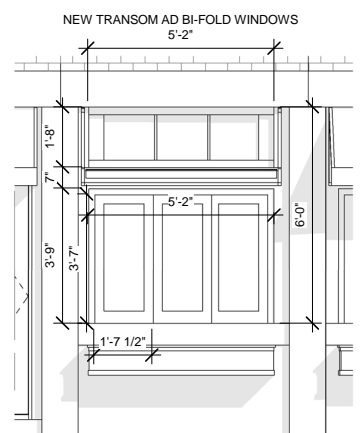
① MKT SQ COMPLETE CANOPY
3/8" = 1'-0"

PROPOSED ELEVATION BELOW (EXISTING AWNINGS WILL REMAIN, BUT ARE HIDDEN FROM VIEW IN THIS ELEVATION)

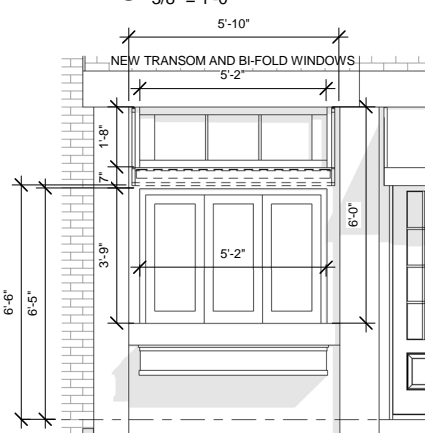


③ MKT SQ COMPLETE GLAZING
3/8" = 1'-0"

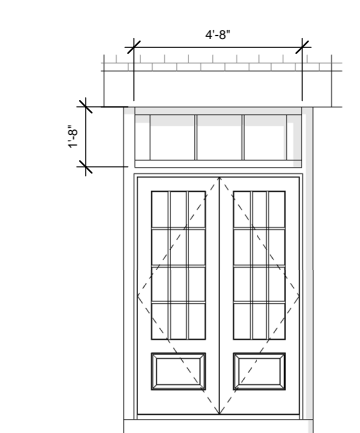
PLEASE NOTE: ALL EXISTING AWNINGS WILL REMAIN (EVEN THOUGH THEY MAY BE HIDDEN FROM VIEW IN SOME ELEVATIONS IN ORDER TO MAKE THE PROPOSED TRANSOM WINDOWS VISIBLE).



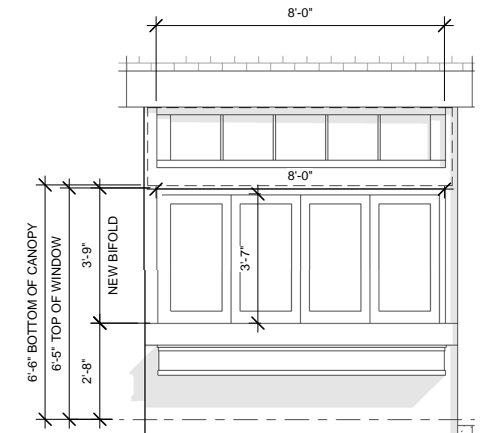
② MKT SQ ELEV - 'B' WINDOWS
3/8" = 1'-0"



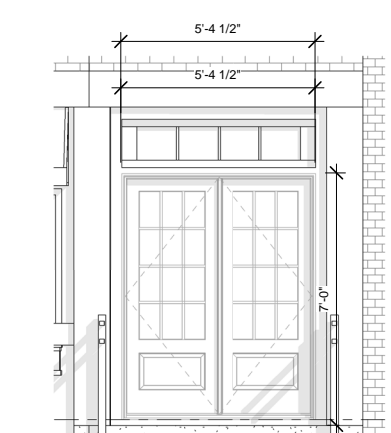
④ MKT SQ ELEV - 'A' WINDOWS
3/8" = 1'-0"



④ MKT SQ E. FIXED DOOR
3/8" = 1'-0"



④ MKT SQ ELEV - 'C' WINDOWS
3/8" = 1'-0"



② MKT SQ ELEV - EXISTING DOOR
3/8" = 1'-0"



⑤ MKT SQ ELEV - FLAT-IRON
3/8" = 1'-0"



Gordon Greenfield, AIA
 Consulting Architect
 4 Cook Street
 Charlestown, MA
 (617) 241-7302
 Gordon.Greenfield@gmail.com

Vera
 Pizza Napoletana
 Ristorante Bar
 Dave Callan & John Santaniello
 VERA Pizza Napoletana Ristorante Bar
 31-35 Market Sq, Unit 1
 Newburyport, MA 01950

REVISED 3-2-10

No.	Description	Date

**VERA PIZZA
 PROGRESS SET
 WINDOW
 ELEVATIONS**

Project number: VNPR-A
 Date: 2020-05-19
 Drawn by: Author
 Checked by: Checker

A2.02

Scale: 3/8" = 1'-0"



① HISTORIC GROUP PERSPECTIVE AT MARKET SQUARE



www.KWHdesign.net

Gordon Greenfield, AIA
 Consulting Architect
 4 Cook Street
 Charlestown, MA

(617) 241-7302
 Gordon.Greenfield@gmail.com



Dave Callan & John Santaniello
 VERA Pizza Napoletana Ristorante Bar
 31-35 Market Sq, Unit 1
 Newburyport, MA 01950

No.	Description	Date

**VERA PIZZA
 PROGRESS SET
 VIEW FROM MARKET
 SQUARE**

Project number	VNPR-A
Date	2020-05-19
Drawn by	Author
Checked by	Checker

LS-4

Scale



NEW BRIDGES FERRY
DAILY SERVICE

THE DRAGON'S NEST

Vera RISTORANTE • BAR

al NIGRO, PETTEPTI
& LUCAS LLP
ATTORNEYS AT LAW

CARBON

SKATEBOARDING
OR
ROLLER BLADING
IS PROHIBITED



Vera RESTORANTE • BAR

NIGRA PETTEPTI & LUCAS LLP ATTORNEYS AT LAW

THE DRAGON'S NEST

NEW BRITAIN PUBLIC BEVERAGE

CARBON

SKATEBOARDING OR ROLLER BLADING ALLOWED

J.M. La...