

project:

27 HANCOCK STREET

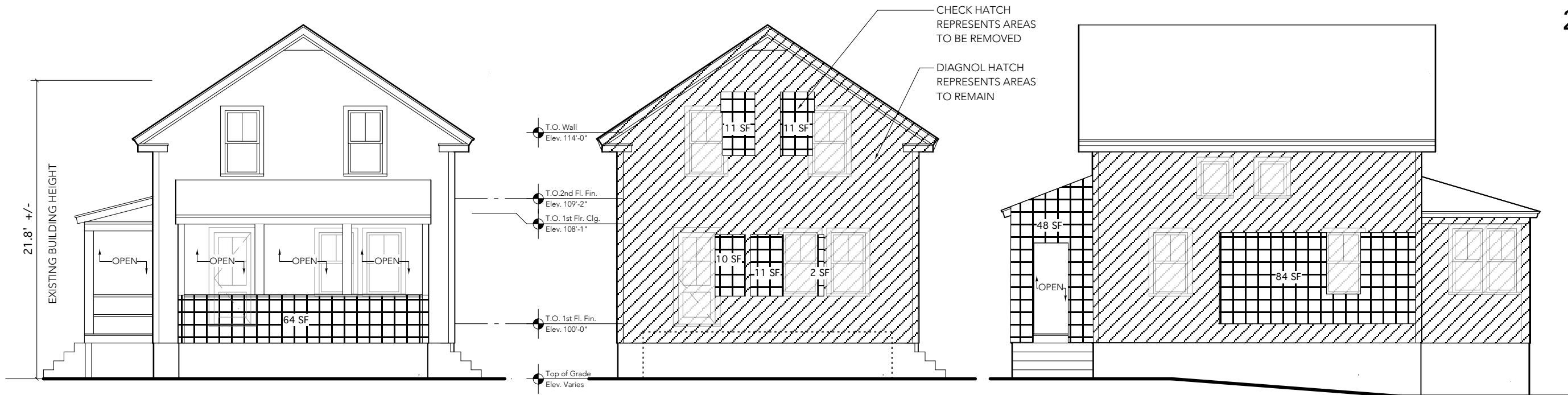
Newburyport, MA
01950

architect:

GRAF ARCHITECTS

2 Liberty Street
Newburyport, MA
01950
T. 978 499 9442

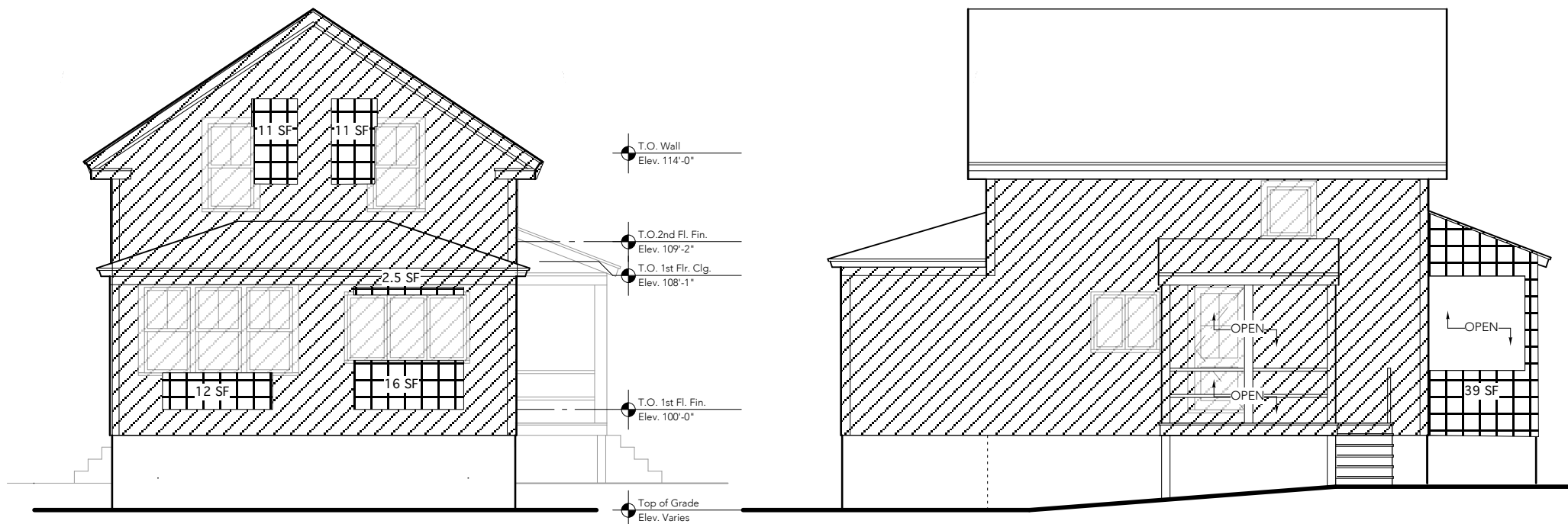
www.grafarch.com



1 Exterior Elevation - WEST (FRONT WITH PORCH)
SCALE: 1/8" = 1'-0"

2 Exterior Elevation - WEST (FRONT WITHOUT PORCH)
SCALE: 1/8" = 1'-0"

3 Exterior Elevation - SOUTH (HANCOCK)
SCALE: 1/8" = 1'-0"



4 Exterior Elevation - EAST
SCALE: 1/8" = 1'-0"

5 Exterior Elevation - NORTH
SCALE: 1/8" = 1'-0"

EXISTING WALLS

| | |
|----------------|----------|
| FRONT PORCH | 64 SF |
| FRONT | 437 SF |
| SIDE (HANCOCK) | 457 SF |
| REAR | 437 SF |
| SIDE | 449 SF |
| TOTAL | 1,844 SF |

WALLS TO BE REMOVED

| | |
|----------------|--------|
| FRONT PORCH | 64 SF |
| FRONT | 45 SF |
| SIDE (HANCOCK) | 132 SF |
| REAR | 52 SF |
| SIDE | 39 SF |
| TOTAL | 332 SF |

332/1,844 = 18% WALLS TO BE REMOVED

title:

EXISTING EXTERIOR ELEVATIONS - DEMOLITION CALCULATIONS

SCALE: 1/8" = 1'-0"

4 march 2021

D01