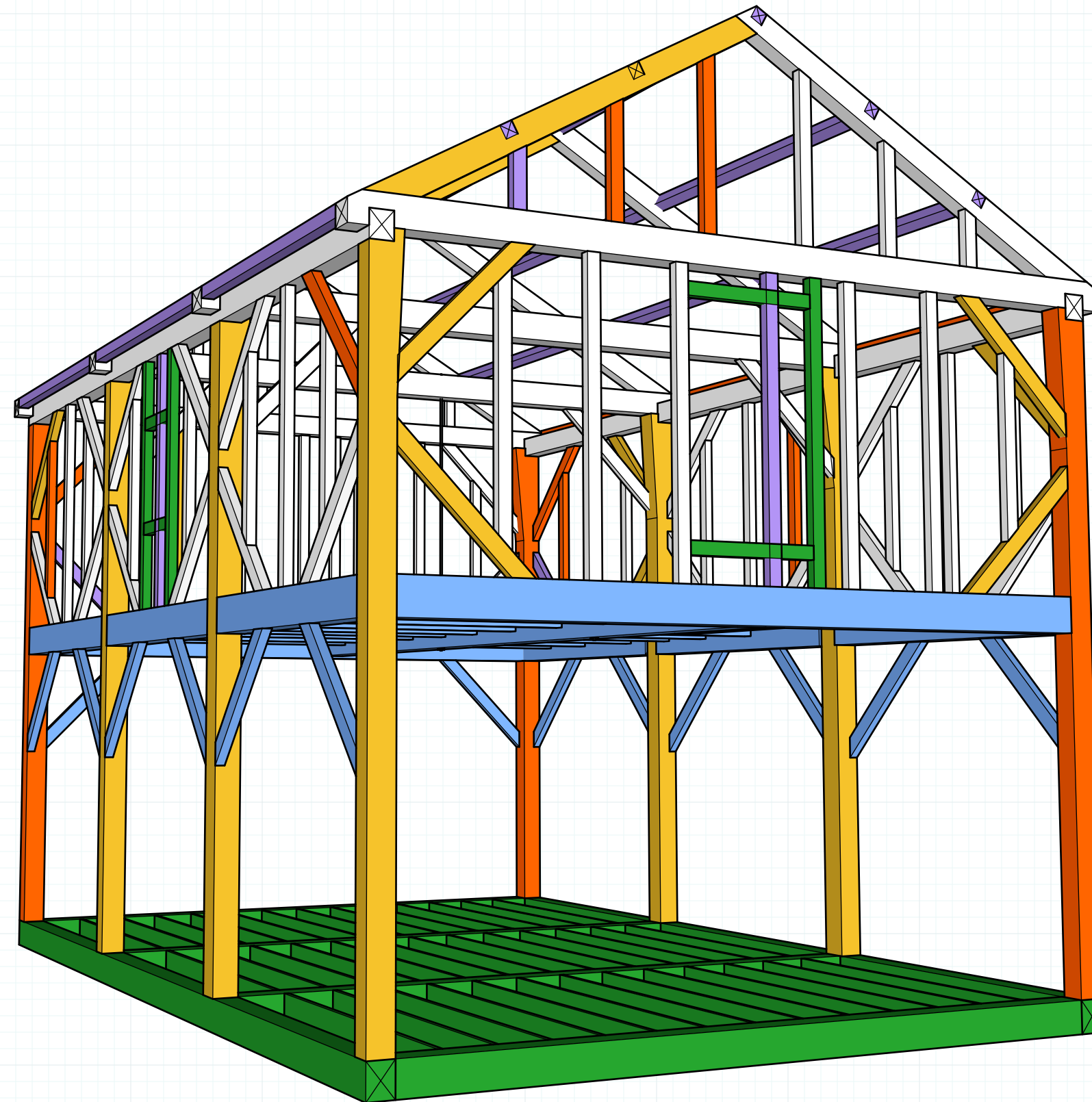


Front Iso

not to scale



PTF

PRESERVATION TIMBER FRAMING
P.O. Box 28
Berwick, ME 03901
www.preservationtimberframing.com

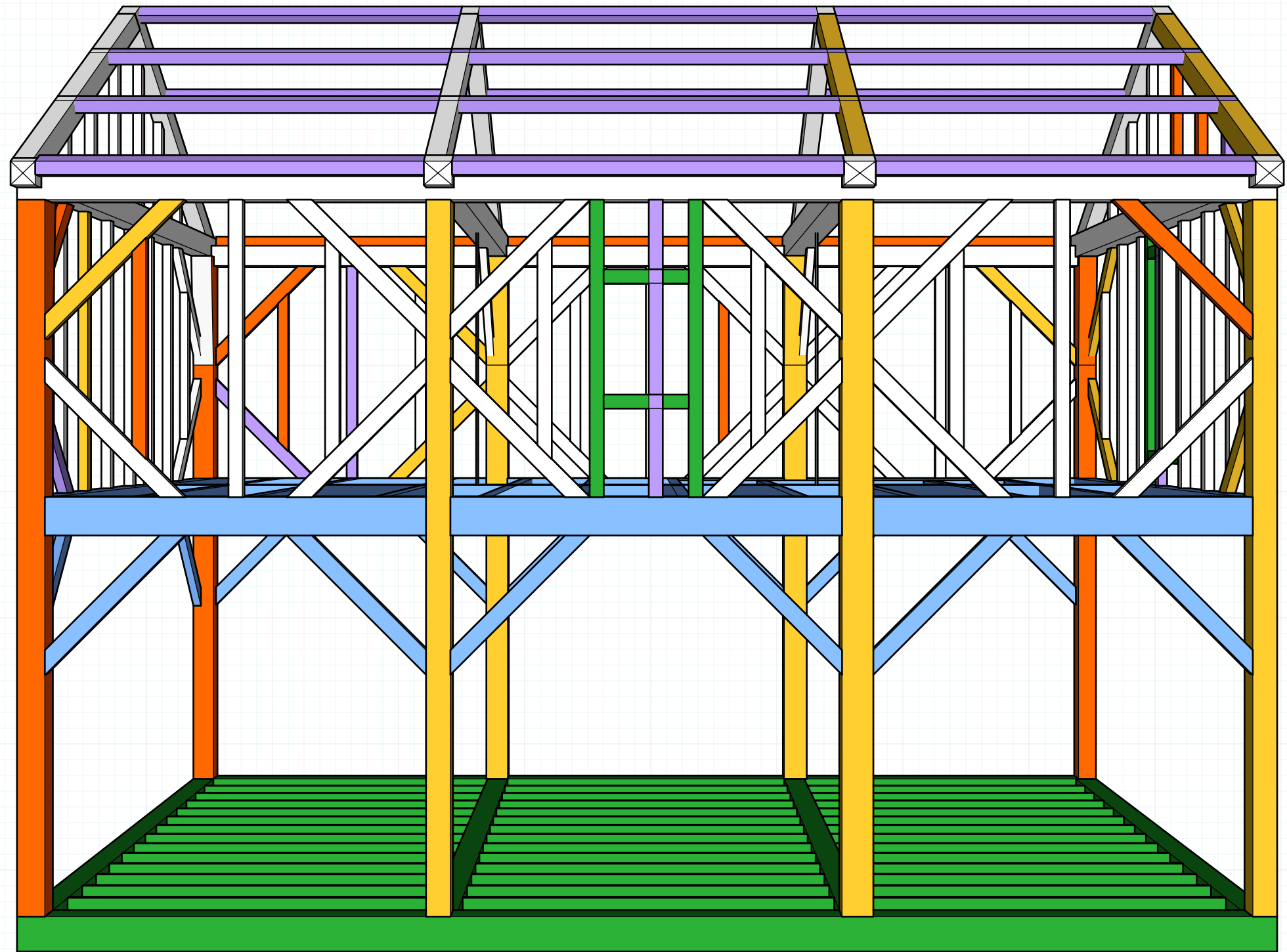
ARRON STURGIS
Office - 207.698.1695
Cell - 603.781.5725
arron@preservationtimberframing.com

Delisle Barn
Brin Stevens and Stephen Delisle
195 High St
Newburyport, MA

09.25.2019
Issue 001
Jessica MilNeil

Left Iso

not to scale



COLOR CODE

- █ Replace
- █ Repair
- █ New
- █ Hidden
- █ Missing

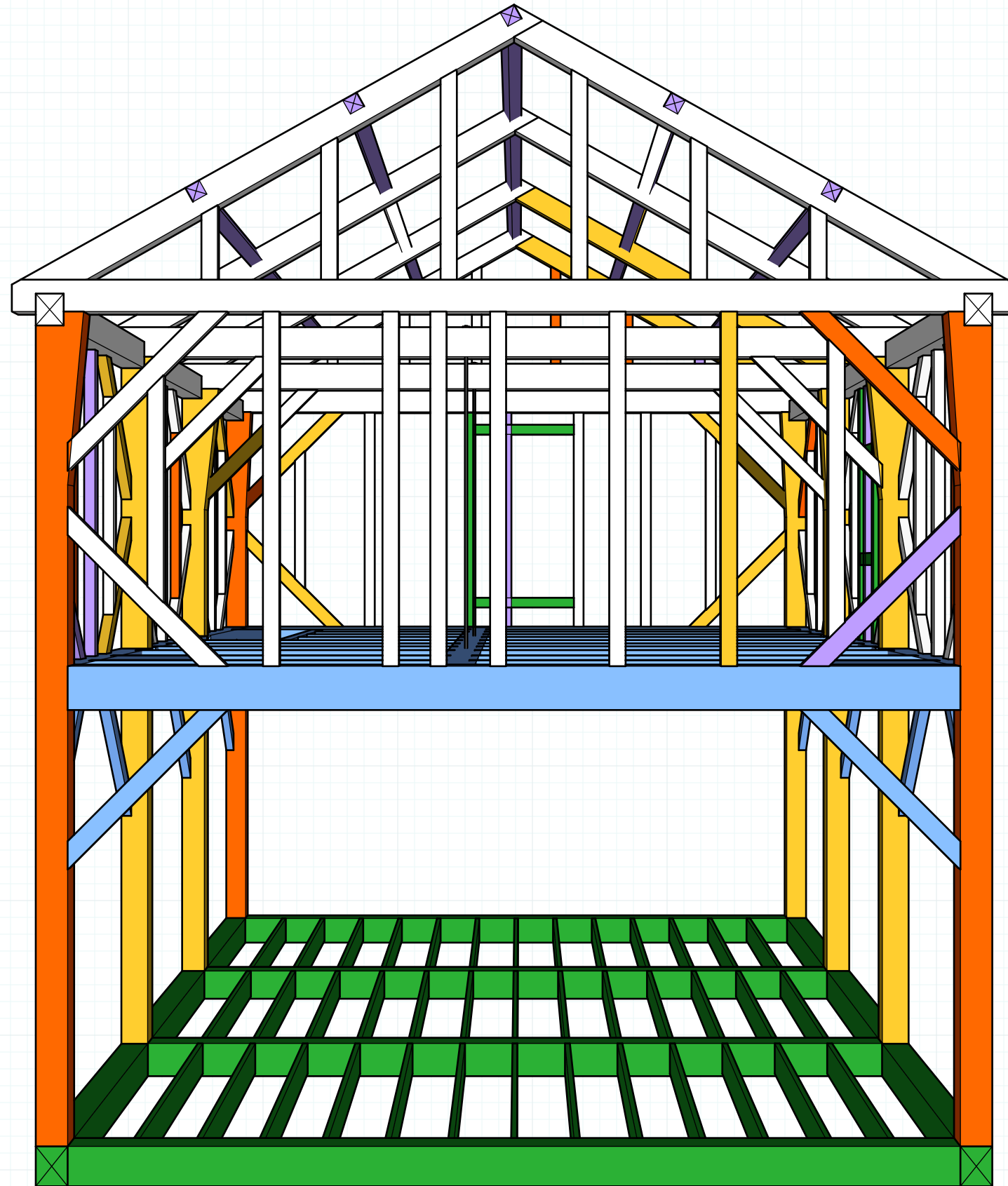
Rear Iso

not to scale



COLOR CODE

- Replace
- Repair
- New
- Hidden
- Missing



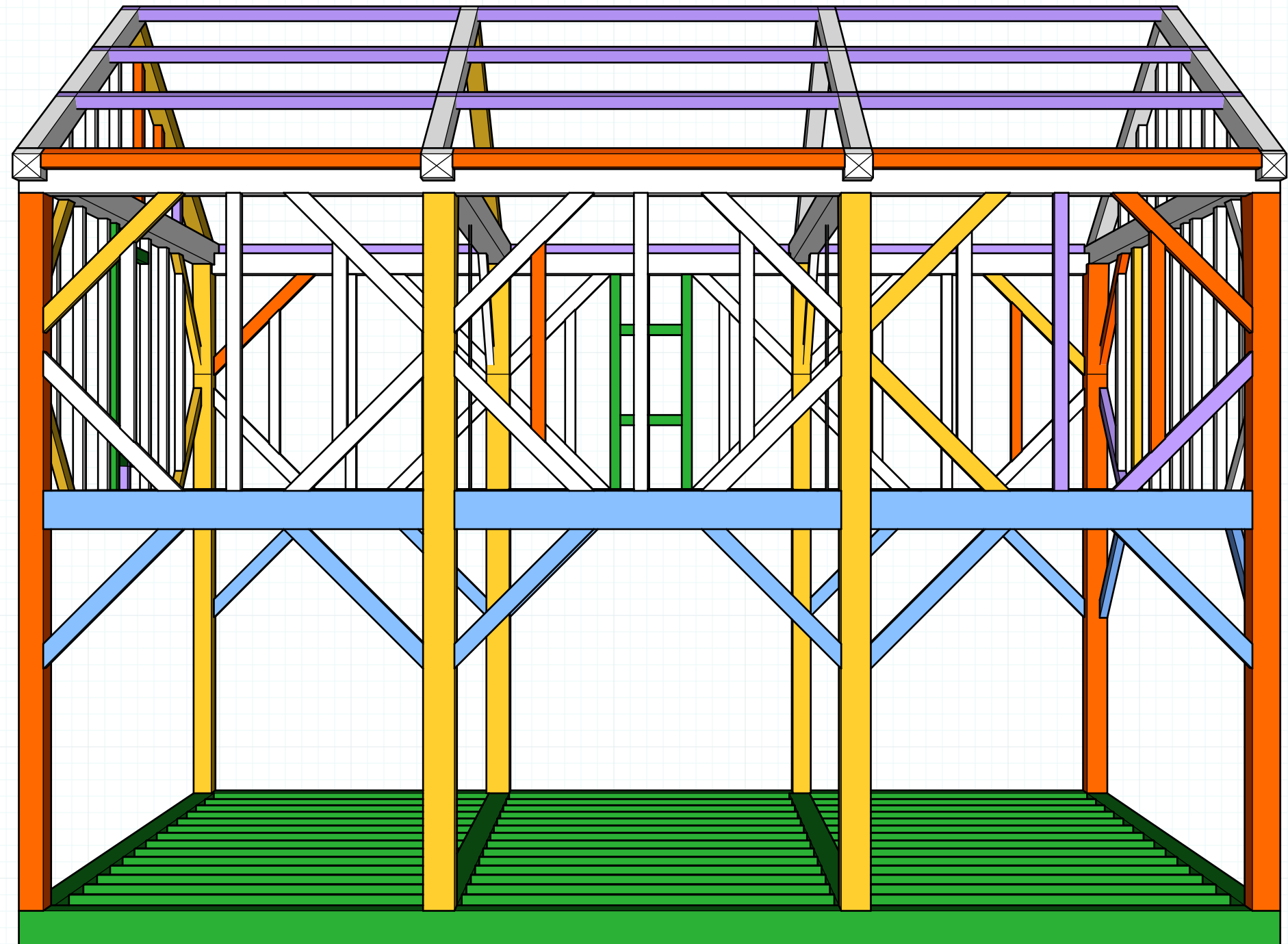
09.25.2019
Draft 001
Jessica MilNeil

Delisle Barn
Brin Stevens and Stephen Delisle
195 High St
Newburyport, MA

PRESERVATION TIMBER FRAMING
P.O. Box 28
Berwick, ME 03901
207 698 1695

Right Iso

not to scale



COLOR CODE

- Replace
- Repair
- New
- Hidden
- Missing

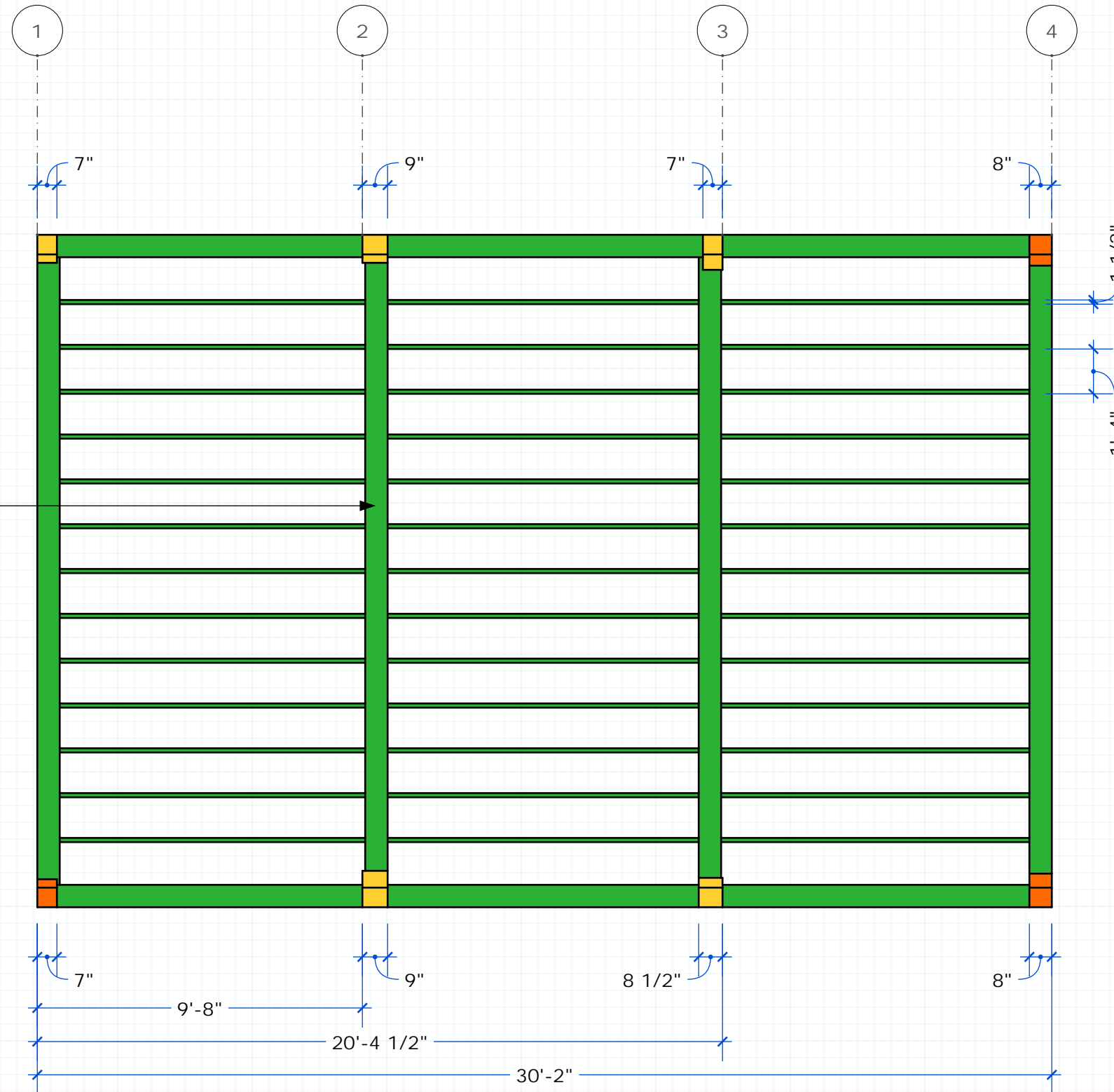
09.25.2019
Draft 001
Jessica MilNeil

Delisle Barn
Brin Stevens and Stephen Delisle
195 High St
Newburyport, MA

PRESERVATION TIMBER FRAMING
P.O. Box 28
Berwick, ME 03901
207 698 1695

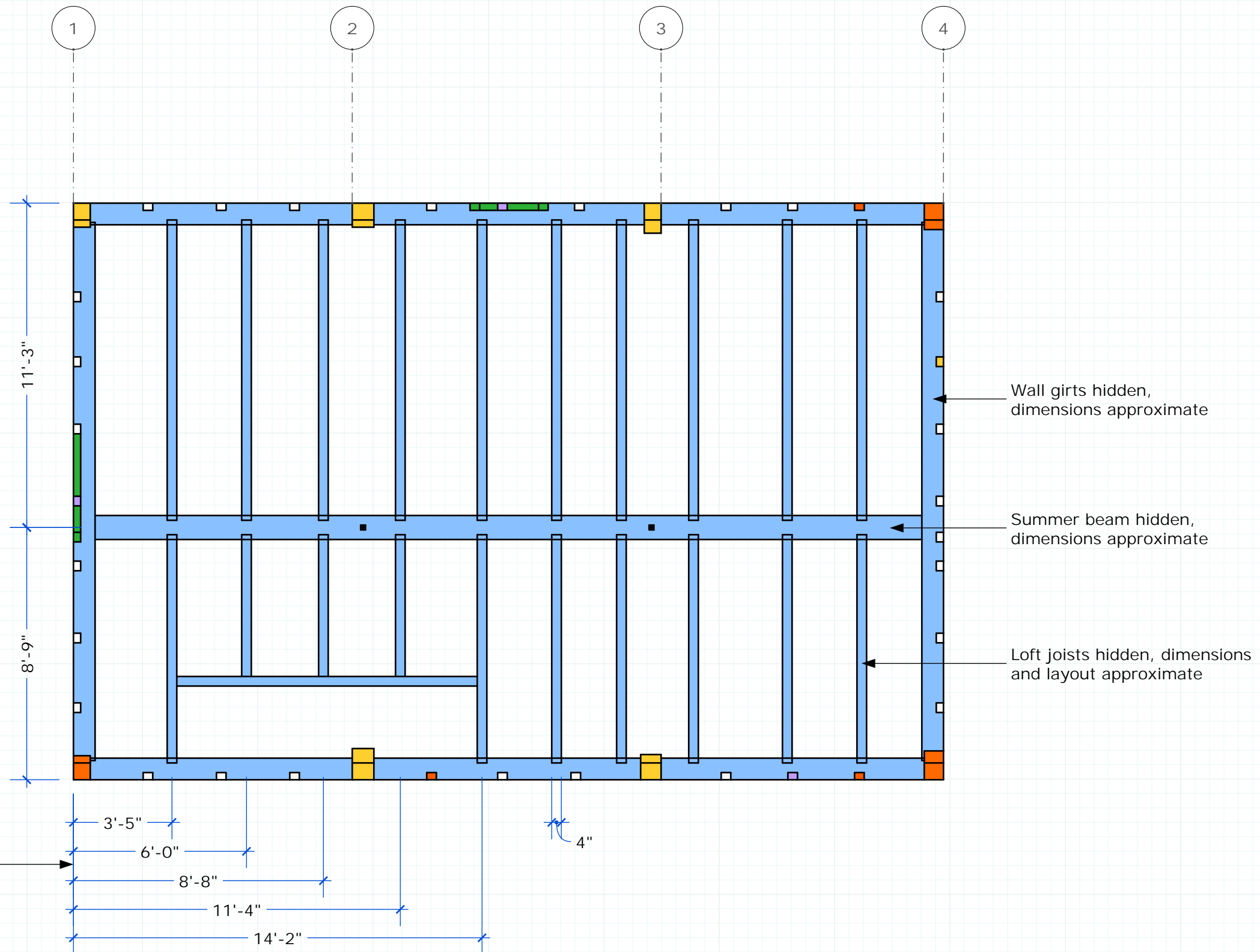
Sill Level

1/4" : 1'



Loft Level

1/4" : 1'

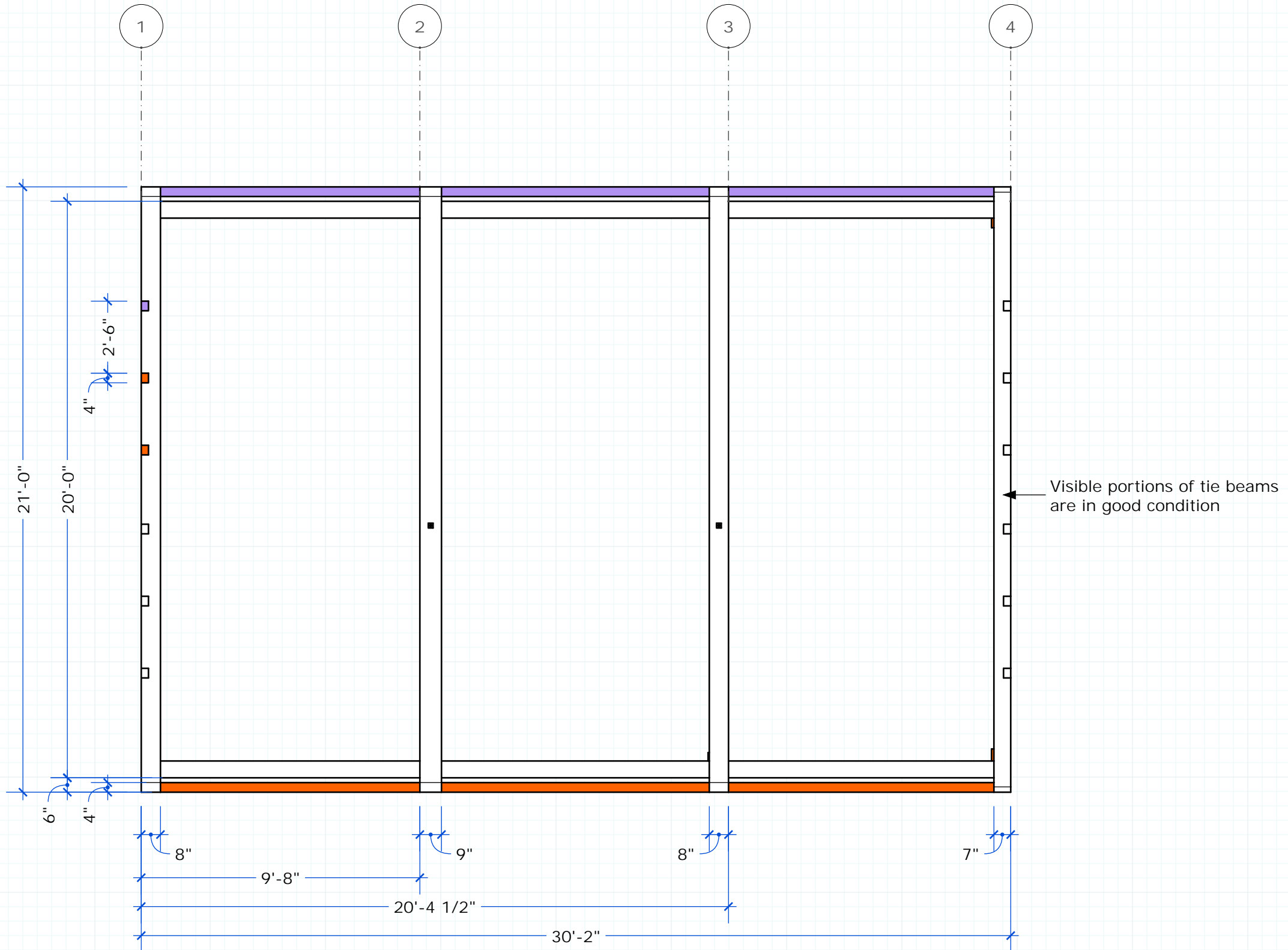


COLOR CODE

- Replace
- Repair
- New
- Hidden
- Missing

Tie Level

1/4" : 1'



COLOR CODE

- Replace
- Repair
- New
- Hidden
- Missing

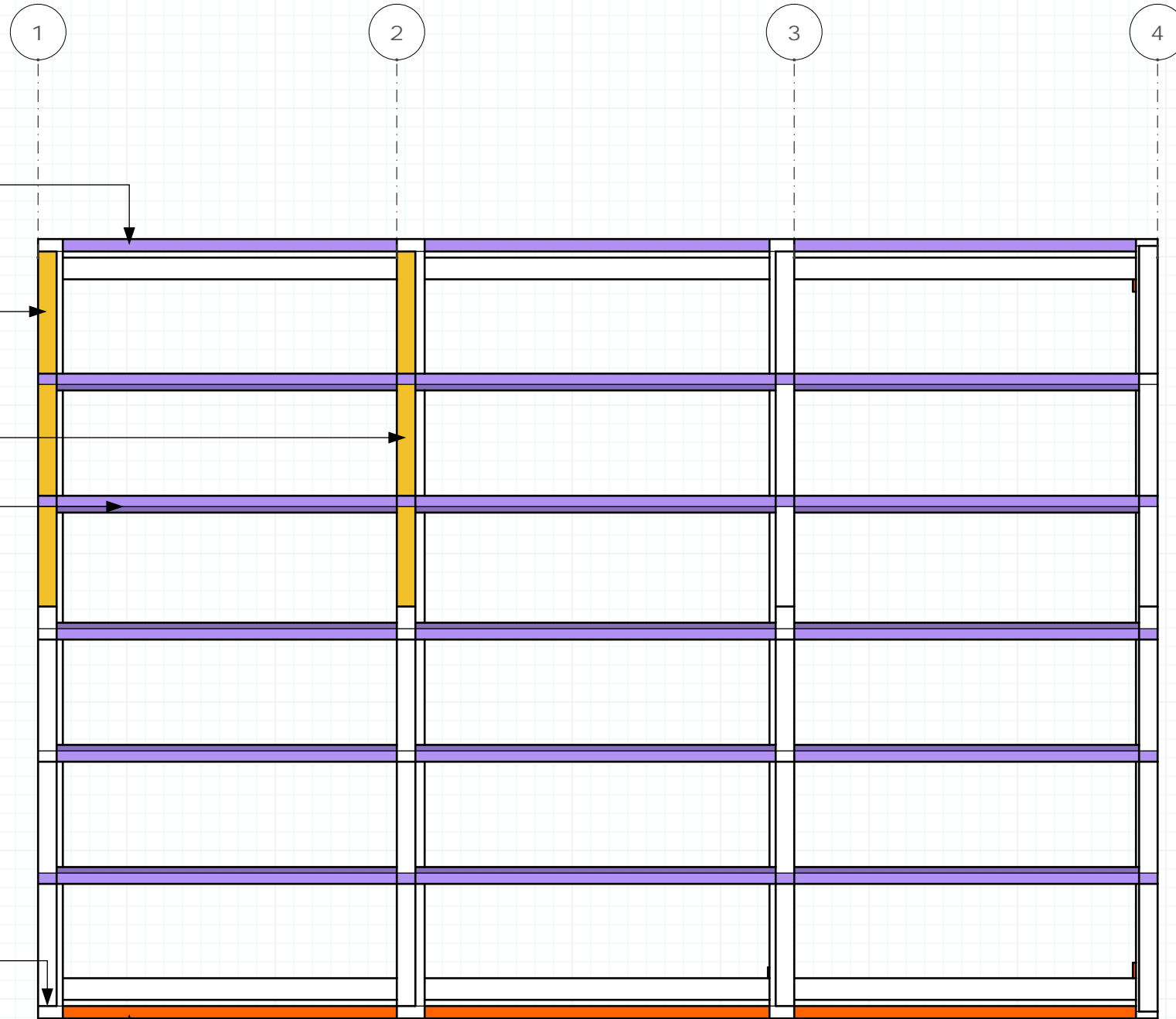
09.25.2019
Draft 001
Jessica MilNeil

Delisle Barn
Brin Stevens and Stephen Delisle
195 High St
Newburyport, MA

PRESERVATION TIMBER FRAMING
P.O. Box 28
Berwick, ME 03901
207 698 1695

Roof Level

1/4" : 1'

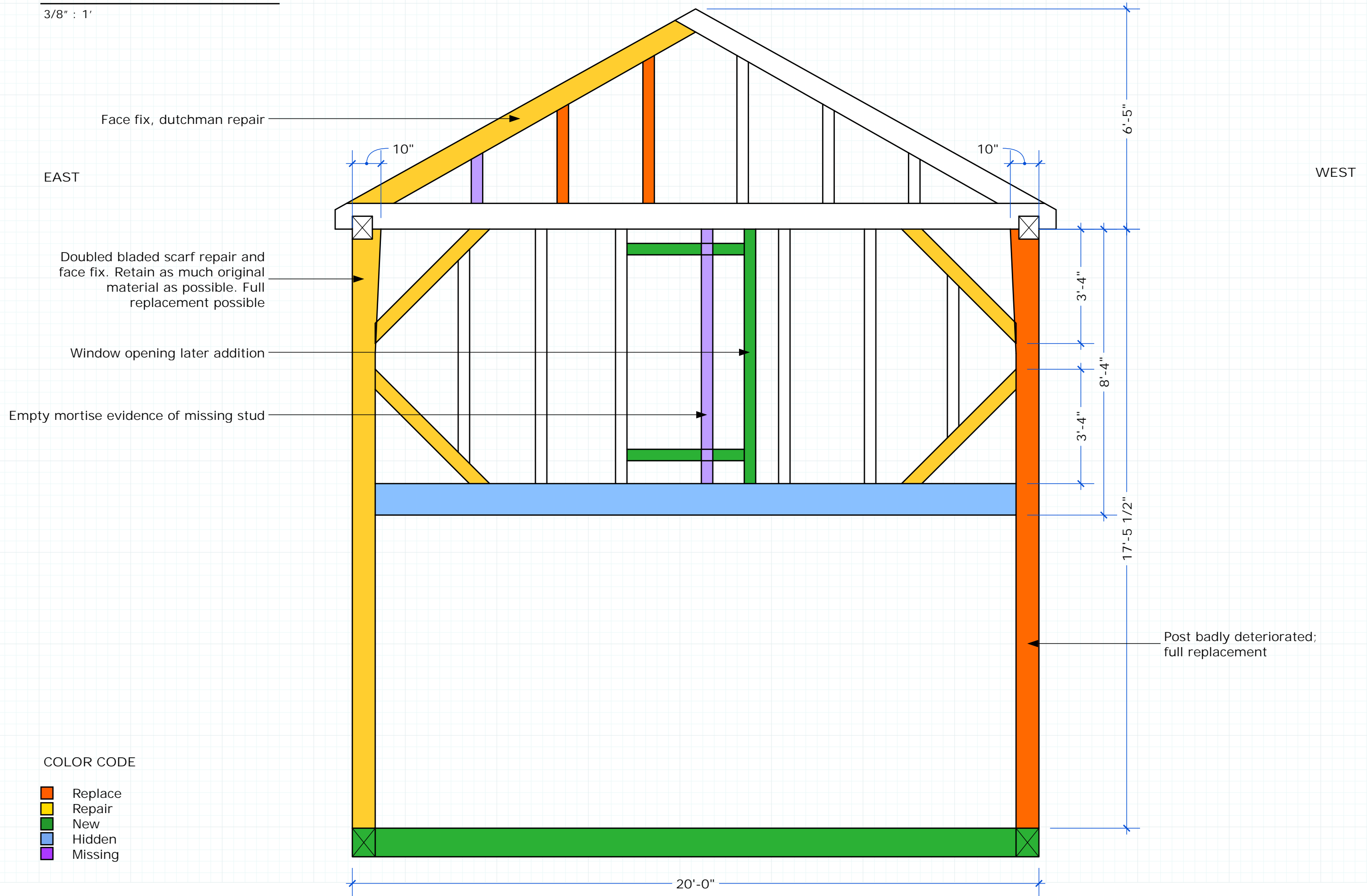


COLOR CODE

-  Replace
-  Repair
-  New
-  Hidden
-  Missing

Bent 1

3/8" : 1'



COLOR CODE

- Replace
- Repair
- New
- Hidden
- Missing

Bent 2

3/8" : 1'

Reference face shown; bent 2 is referenced to front gable

EAST

WEST

Original flying purlin replaced with KD,
tie beam ends bolstered with KD

Tie beams run by plate,
joined by flying purlins

Tie rod hangs from tie beam,
supports summer beam

No girts or joists in line with bent.
Joists run next to posts

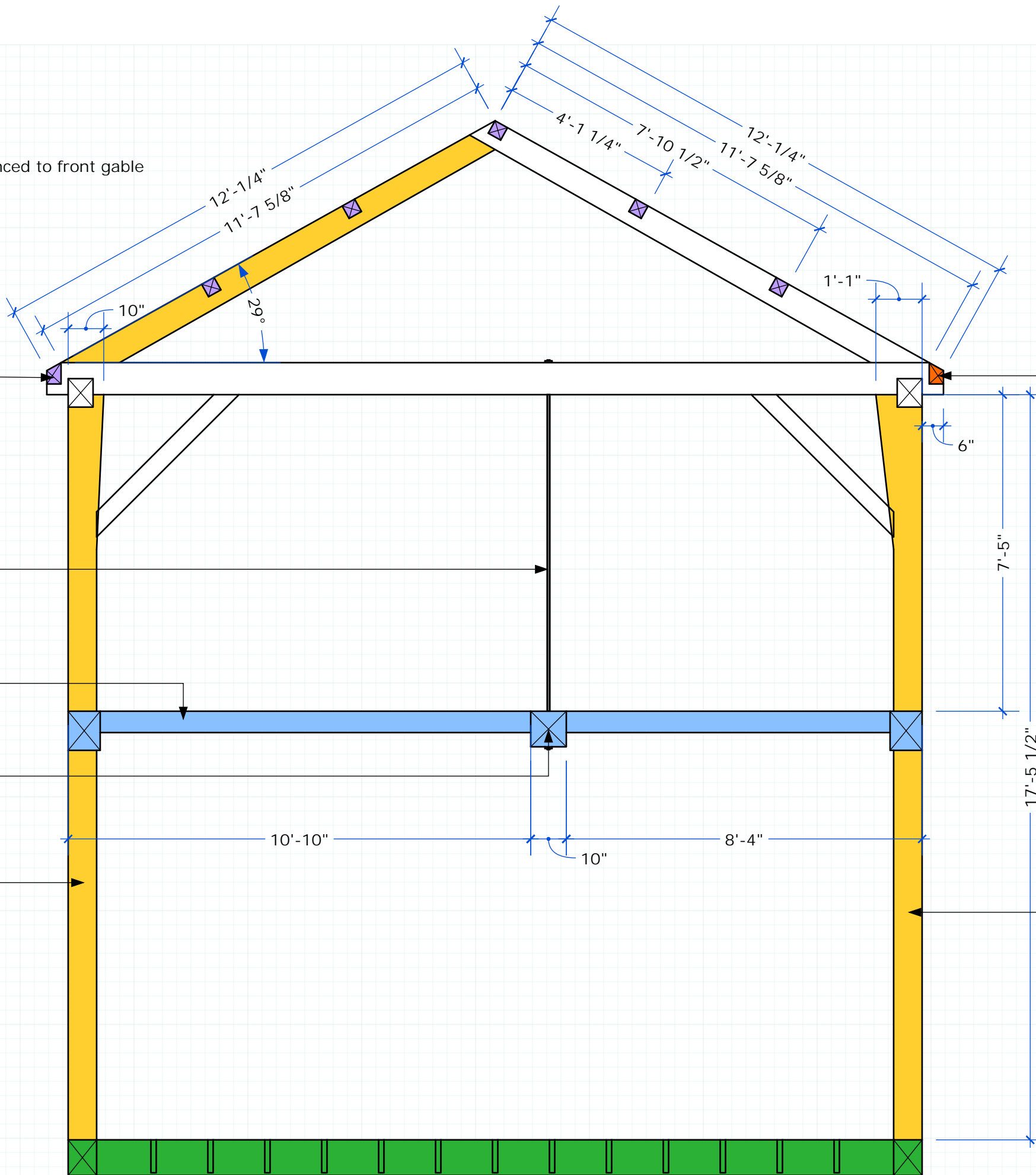
Loft joists land on eave girt and central
summer beam; dimensions approximate

Face fix, dutchman repair, possible scarf fix

Face fix, dutchman repair,
possible scarf repair

COLOR CODE

- Replace
- Repair
- New
- Hidden
- Missing



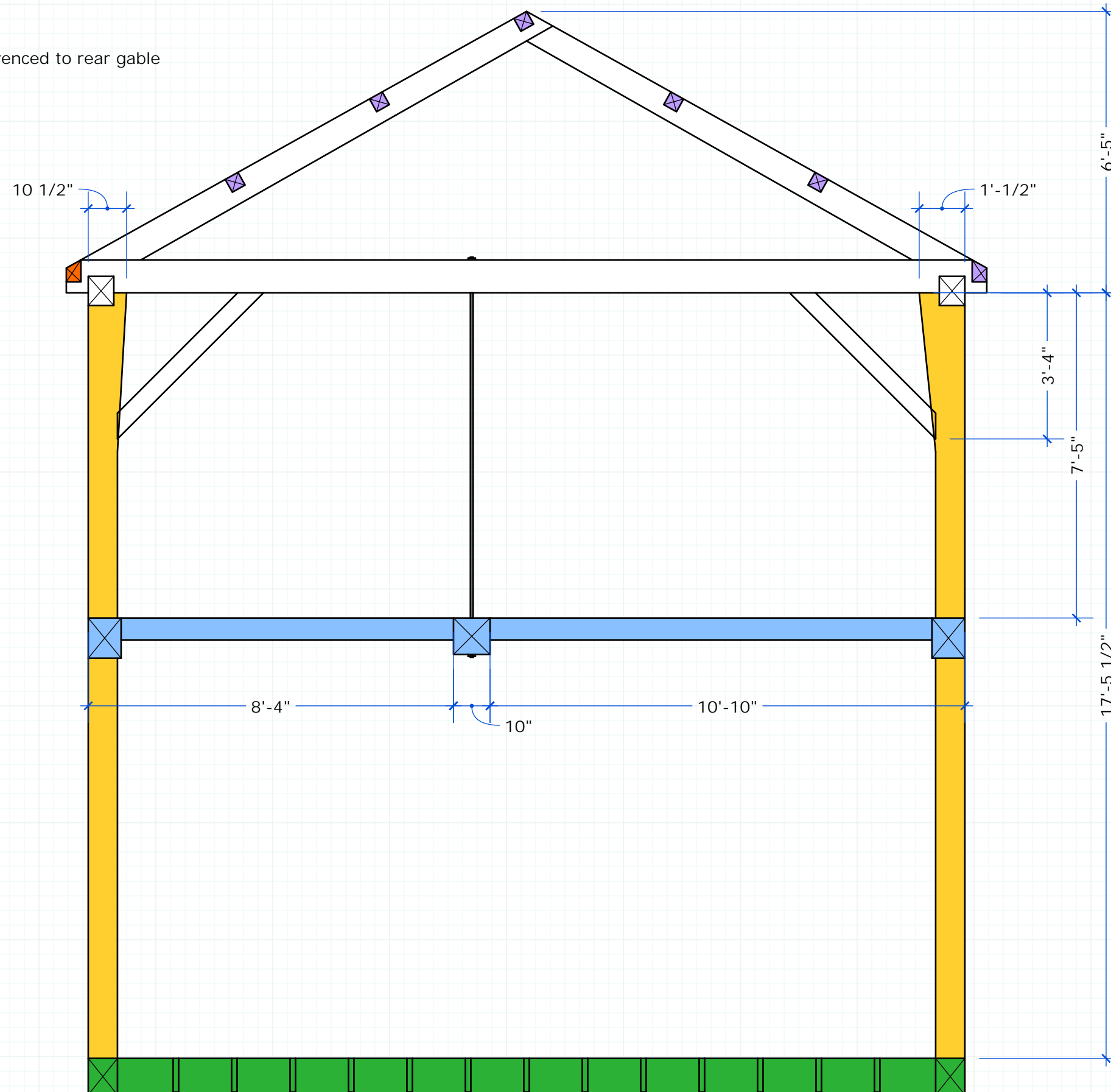
Bent 3

3/8" : 1'

Reference face shown; bent 3 is referenced to rear gable

WEST

EAST



COLOR CODE

- Replace
- Repair
- New
- Hidden
- Missing

Bent 4

3/8" : 1'

WEST

EAST

Post severely deteriorated and will likely need to be replaced

Post badly deteriorated, much of the material has already been removed. Post will likely need full replacement

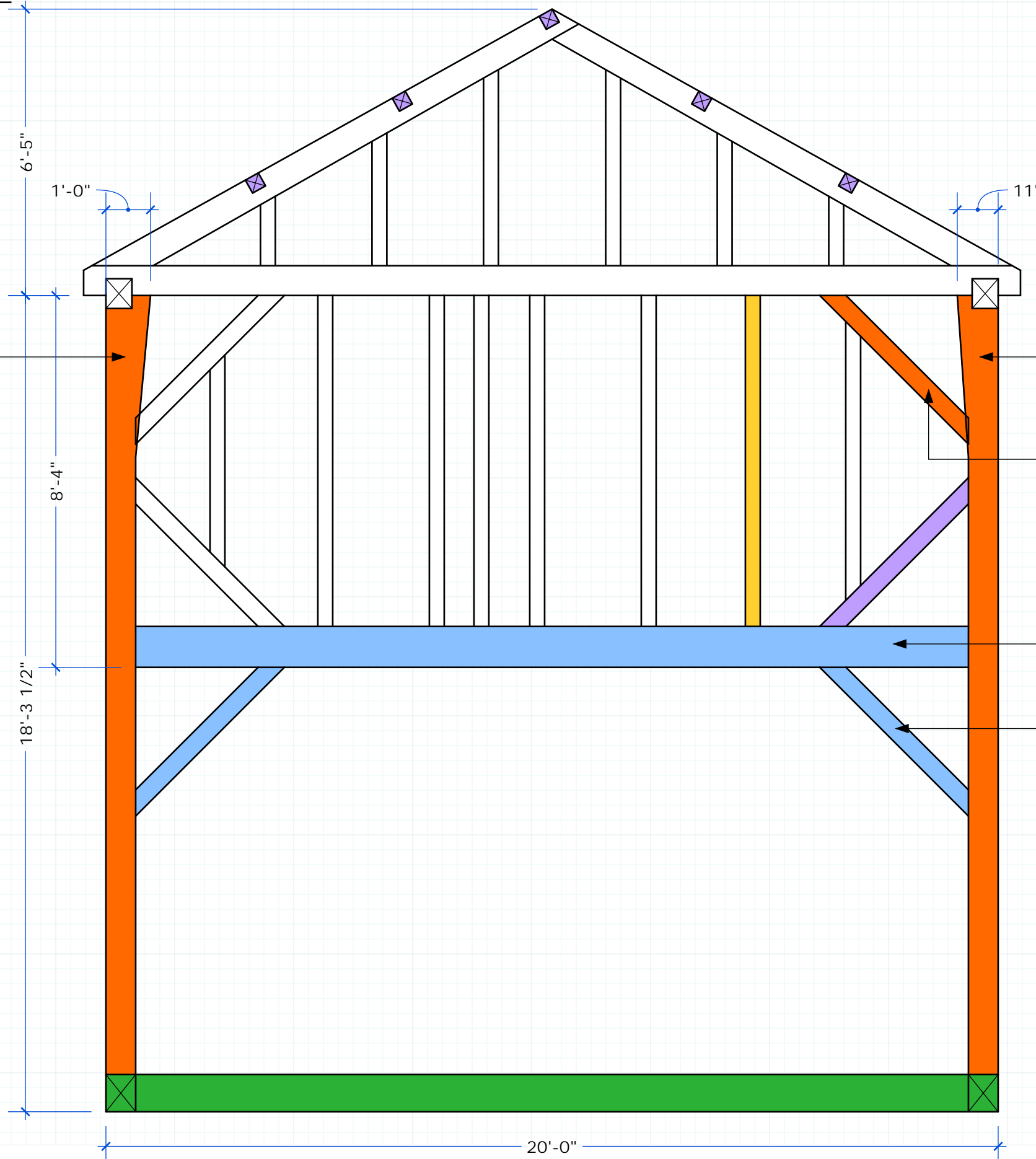
Brace badly deteriorated and will likely need to be replaced

Loft girts hidden

Lower wall braces hidden

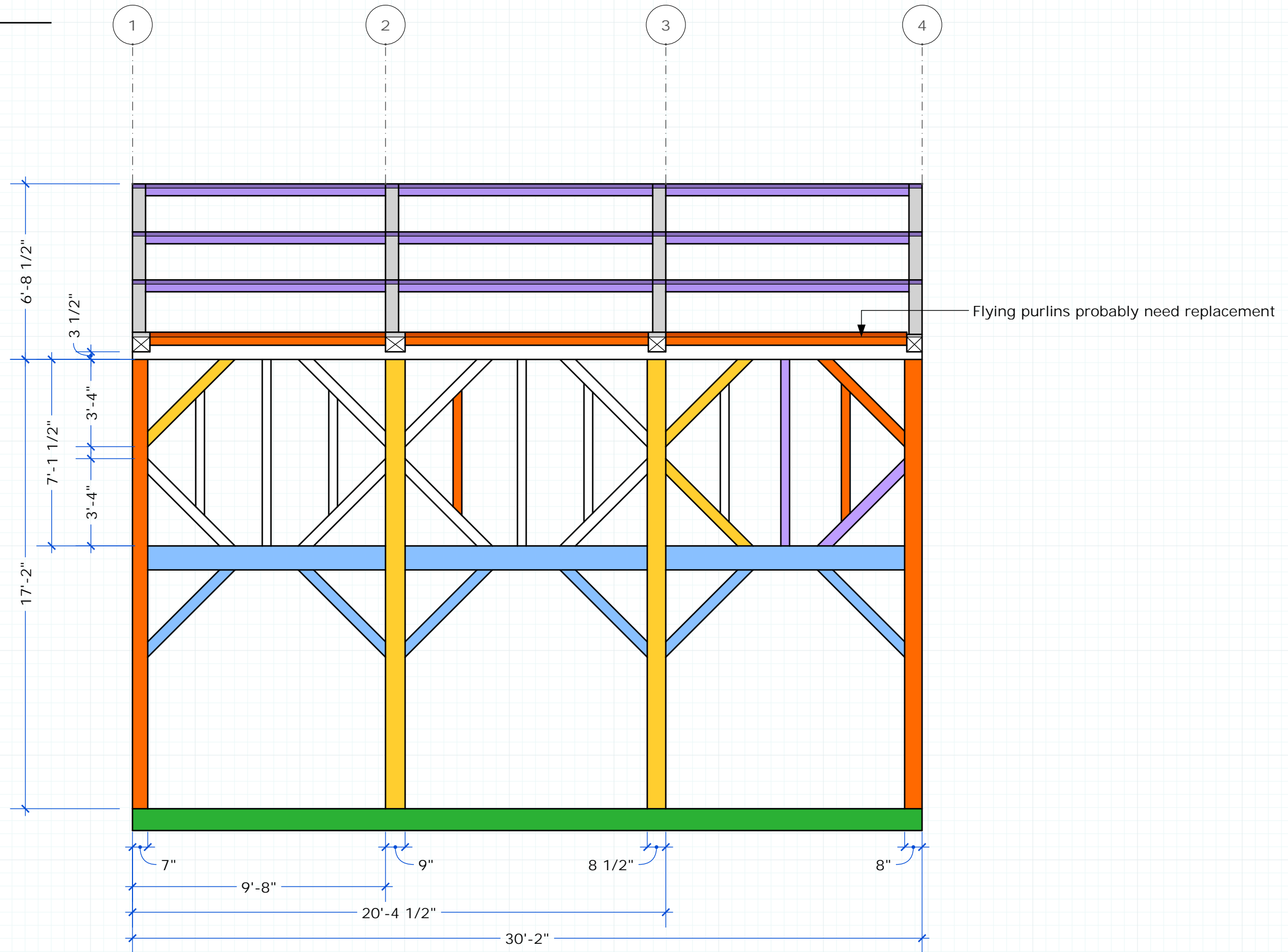
COLOR CODE

- Replace
- Repair
- New
- Hidden
- Missing



East (Right) Eave

1/4" : 1'

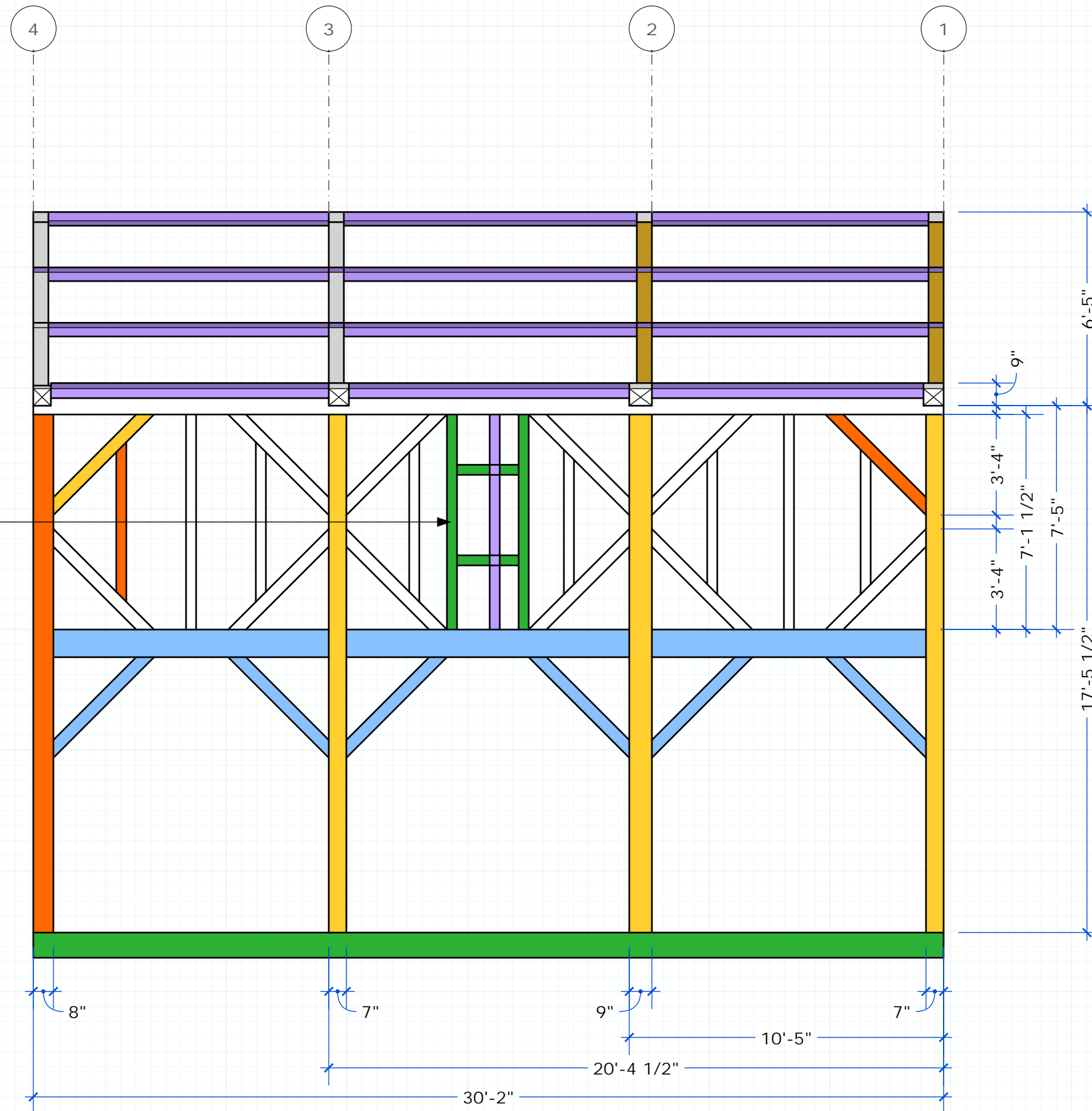


COLOR CODE

- Replace
- Repair
- New
- Hidden
- Missing

West (Left) Eave

1/4" : 1'



Later window addition; original stud location indicated by mortise

COLOR CODE

- Replace
- Repair
- New
- Hidden
- Missing

Front Facade (Proposed)

no scale



EAST

WEST

PTF

09.25.2019
Draft 001
Jessica MilNeil

Delisle Barn
Brin Stevens and Stephen Delisle
195 High St
Newburyport, MA

PRESERVATION TIMBER FRAMING
P.O. Box 28
Berwick, ME 03901
207 698 1695