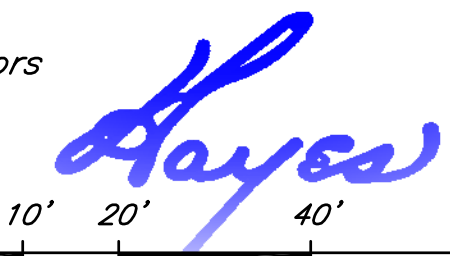


# Plan to Accompany Notice of Intent in NEWBURYPORT, MASS.

Hayes Engineering, Inc.  
Civil Engineers & Land Surveyors  
603 Salem Street  
Wakefield, MA 01880

Telephone: 781.246.2800  
Facsimile: 781.246.7596  
www.hayeseng.com



Scale: 1" = 20'



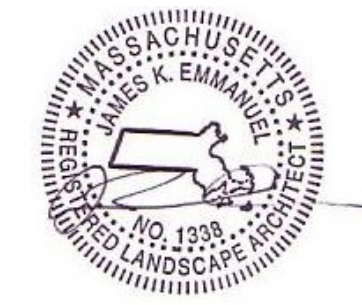
May 16, 2019  
Rev. June 18, 2019  
Rev. June 10, 2020  
(Relocated Trees)

## Showing Proposed Building Expansion #17 Malcolm Hoyt Drive

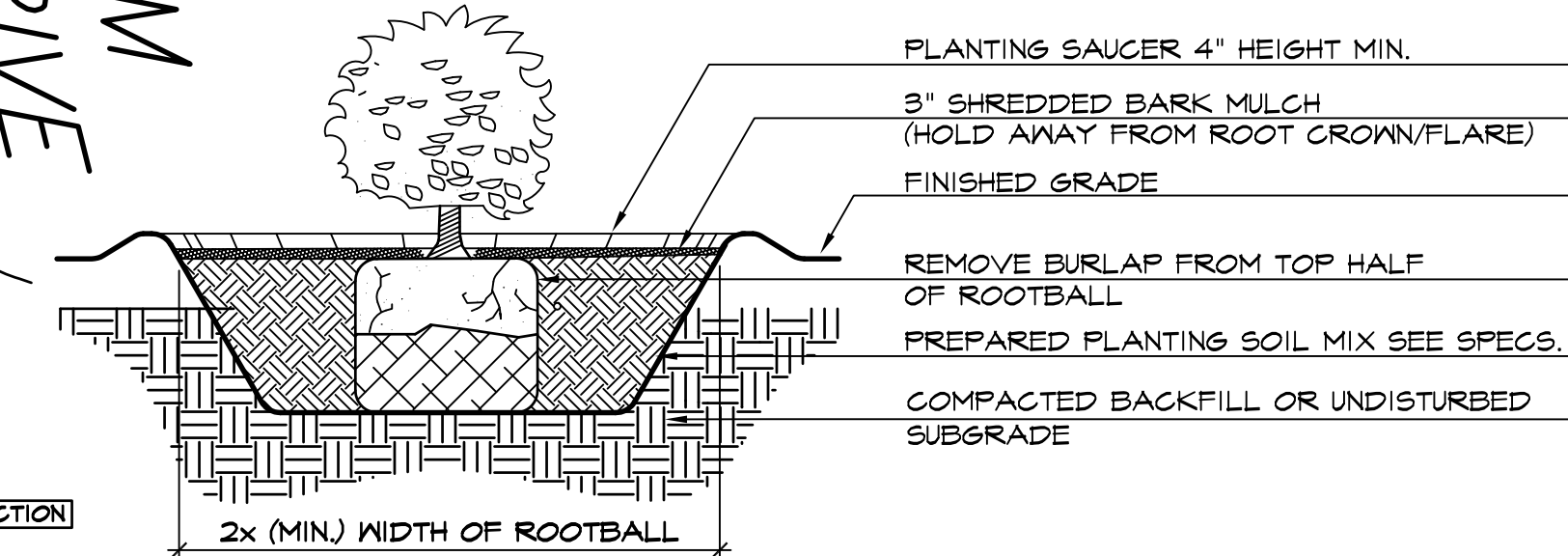
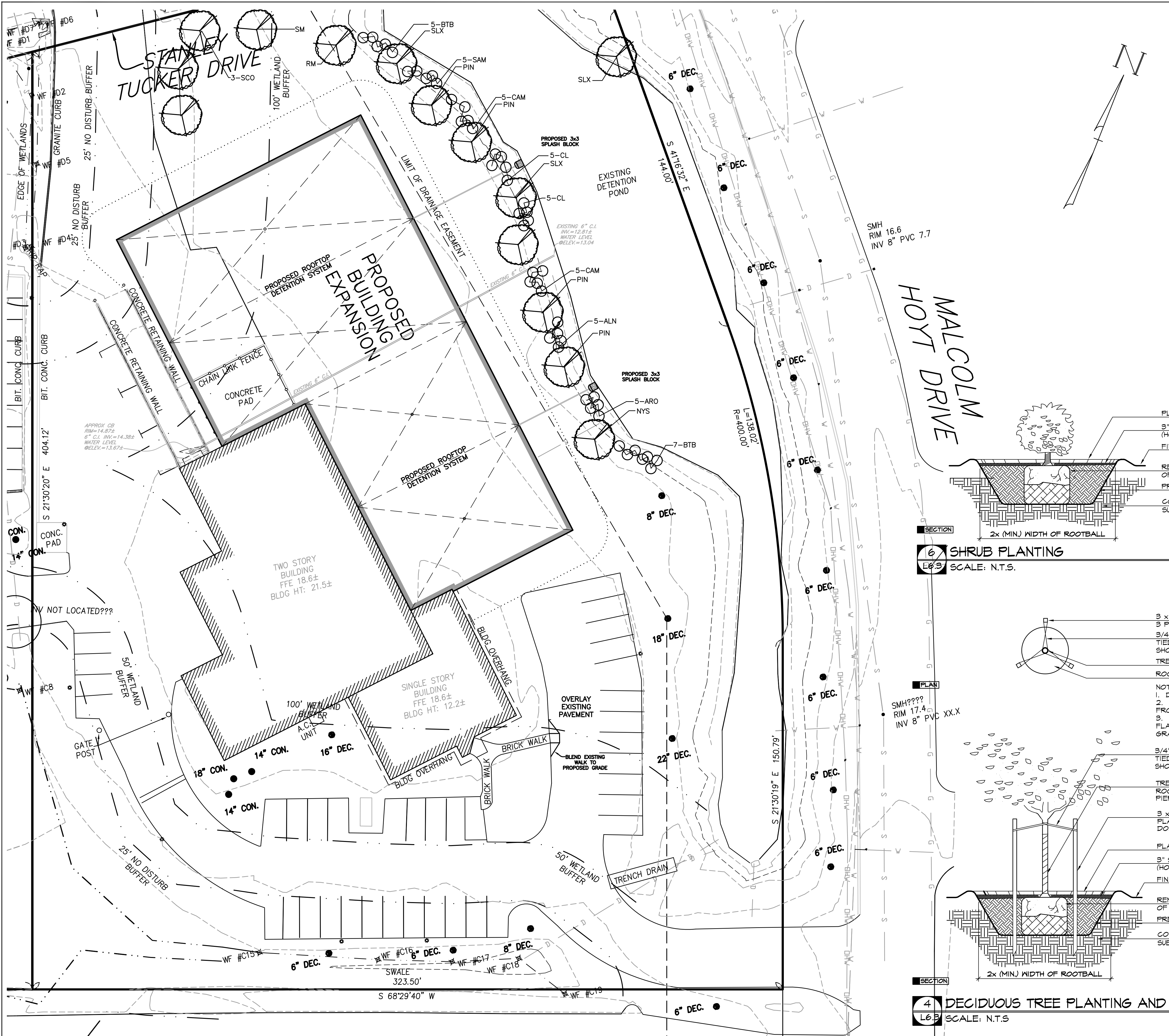
NOTES: BASE TOPOGRAPHIC INFORMATION IS FROM AN ON-THE-GROUND SURVEY PERFORMED ON NOVEMBER 17, 2016 BY EVERETT J. CHANDLER, P.L.S.

PROPOSED SITE ADDITIONS BY HAYES ENGINEERING, INC.

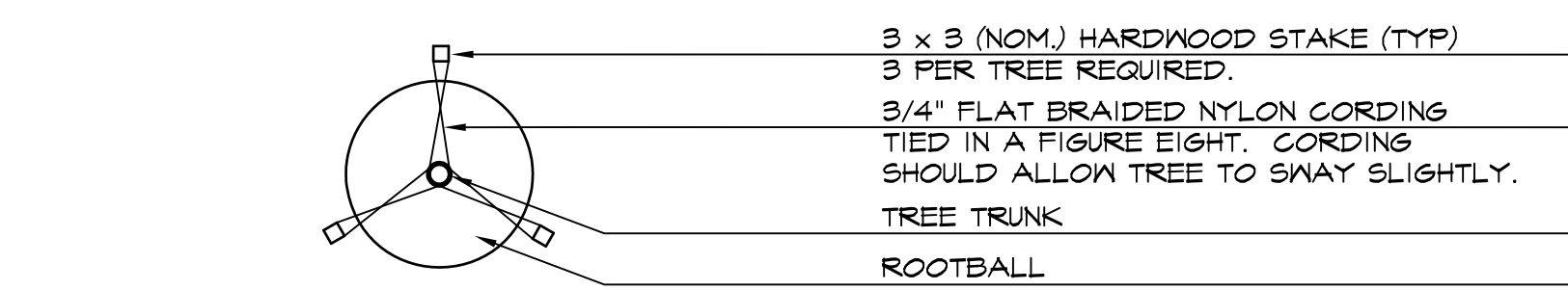
### LANDSCAPE PLAN



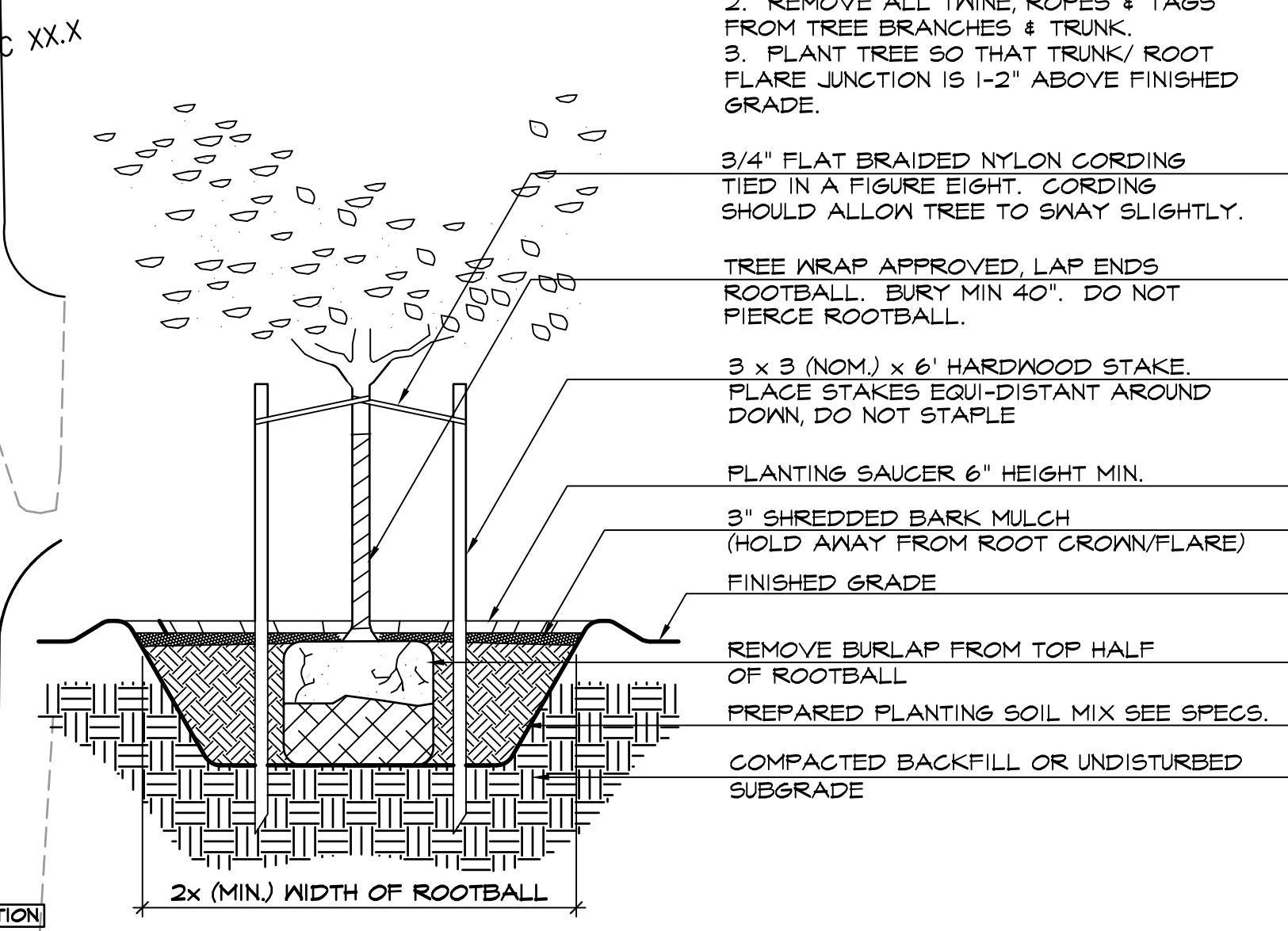
James K. Emmanuel | associates  
LANDSCAPE ARCHITECTS  
22 Carlton Rd.  
Marblehead, MA 01945  
Tel: (781) 622-7487  
Fax: (781) 622-9293  
james@jamesemmanuel.com  
www.jamesemmanuel.com



6 SHRUB PLANTING  
SCALE: N.T.S.



PLAN



4 DECIDUOUS TREE PLANTING AND STAKING  
SCALE: N.T.S.

### Plant Schedule - 17 Malcolm Hoyt Dr.

Qty	Key	Botanical Name	Common Name	Size
<b>TREES:</b>				
1	NYS	Nyssa sylvatica	Tupelo	1.5-2' cal
3	SCO	Quercus rubra	Red Oak	2.5-3' cal
4	PIN	Quercus palustris	Pin Oak	3-3.5' cal
1	SM	Acer saccharum	Sugar Maple	2.5-3' cal
1	RM	Acer rubrum 'Red Sunset'	Red Sunset Maple	3-3.5' cal
3	SLX	Salix nigra	Black Willow	#15 pot
<b>SHRUBS:</b>				
5	ALN	Alnus incana	Speckled Alder	18-24"
5	ARO	Pyrus arbutifolia	Red Chokeberry	18-24"
12	BTB	Cephalanthus occidentalis	Common Buttonbush	2-3'
10	CAM	Cornus amomum	Silky Dogwood	2-3'
10	CL	Clethra alnifolia	Sweet Pepper	2-3'
5	SAM	Sambucus canadensis	Elderberry	18-24"

### PLANTING NOTES

- THE NUMBER OF EACH INDIVIDUAL PLANT TYPE AND SIZE IS PROVIDED IN THE PLANT LIST FOR CONTRACTORS CONVENIENCE ONLY. IF A DISCREPANCY EXISTS BETWEEN THE NUMBER OF PLANTS ON THE LIST AND THE NUMBER SHOWN ON THE DRAWINGS, THE GREATER NUMBER SHALL APPLY.
- ALL PLANT MATERIAL SHALL BE APPROVED BY THE LANDSCAPE ARCHITECT OR THE OWNER'S REPRESENTATIVE PRIOR TO ARRIVAL ON SITE.
- PLANT MATERIAL SHALL BEAR THE SAME RELATIONSHIP TO FINISHED GRADE AS TO THE ORIGINAL PLANTING GRADE.
- THE CONTRACTOR SHALL LOCATE AND MARK ALL UTILITIES PRIOR TO PLANTING. ANY CONFLICTS BETWEEN PLANTING AND UTILITIES SHALL BE IMMEDIATELY REPORTED TO THE LANDSCAPE ARCHITECT SO THAT ALTERNATE PLANTING LOCATIONS CAN BE DETERMINED.
- NO SUBSTITUTION OF PLANT MATERIALS WILL BE ALLOWED WITHOUT THE PRIOR WRITTEN APPROVAL OF THE LANDSCAPE ARCHITECT.
- THE CONTRACTOR SHALL BE RESPONSIBLE FOR PROTECTING ALL PLANTS AGAINST DAMAGE FROM ON-GOING CONSTRUCTION. PROTECTION SHALL BEGIN AT THE TIME THE PLANT IS INSTALLED AND CONTINUE UNTIL FORMAL ACCEPTANCE OF ALL PLANTING.

### NOTE:

- See Civil Drawings for location and type of erosion control.