

The Barrett - Harris Residence

112 High Street
Newburyport, MA

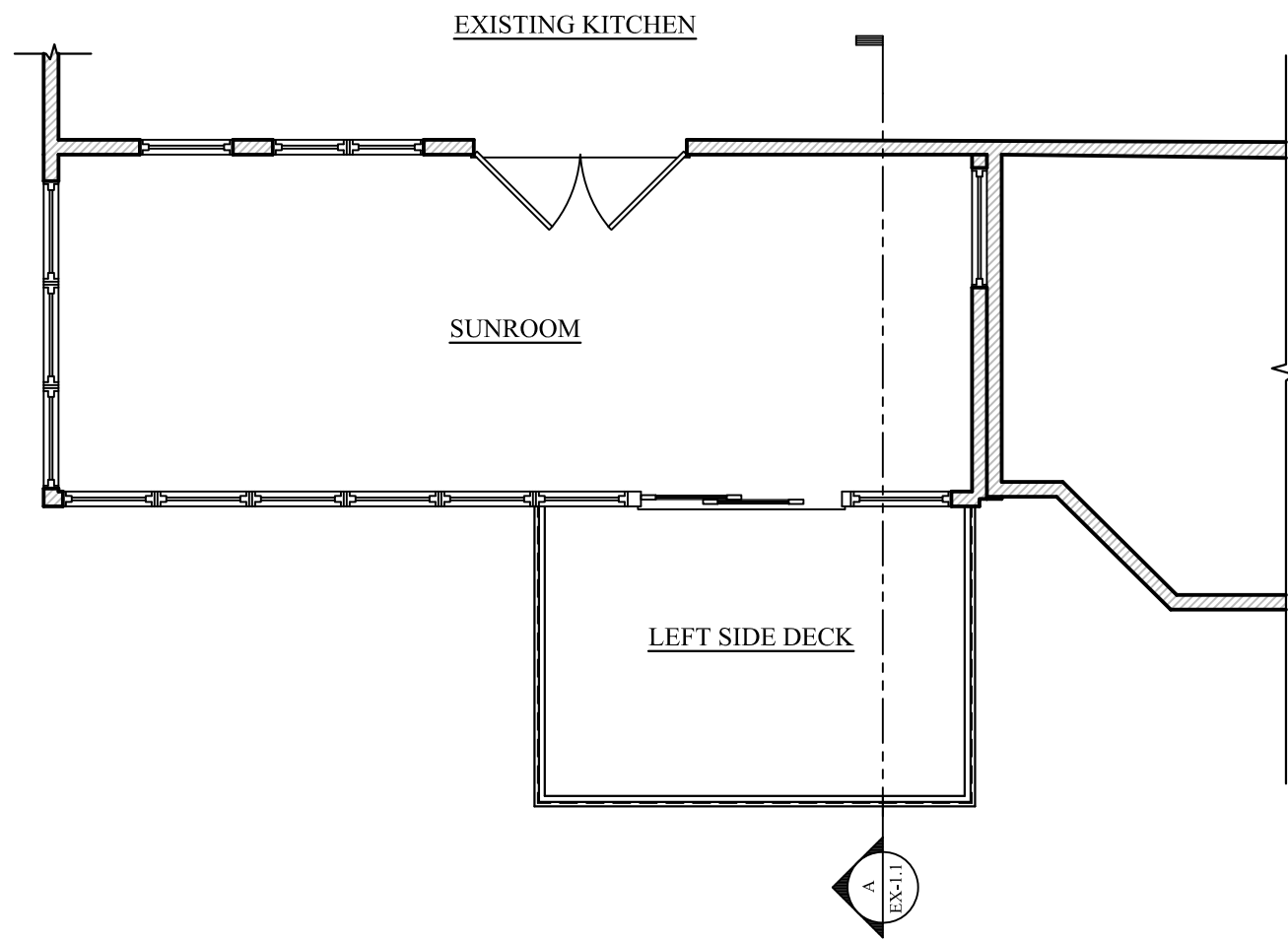
Design Set
February 5, 2021

CW Design LLC

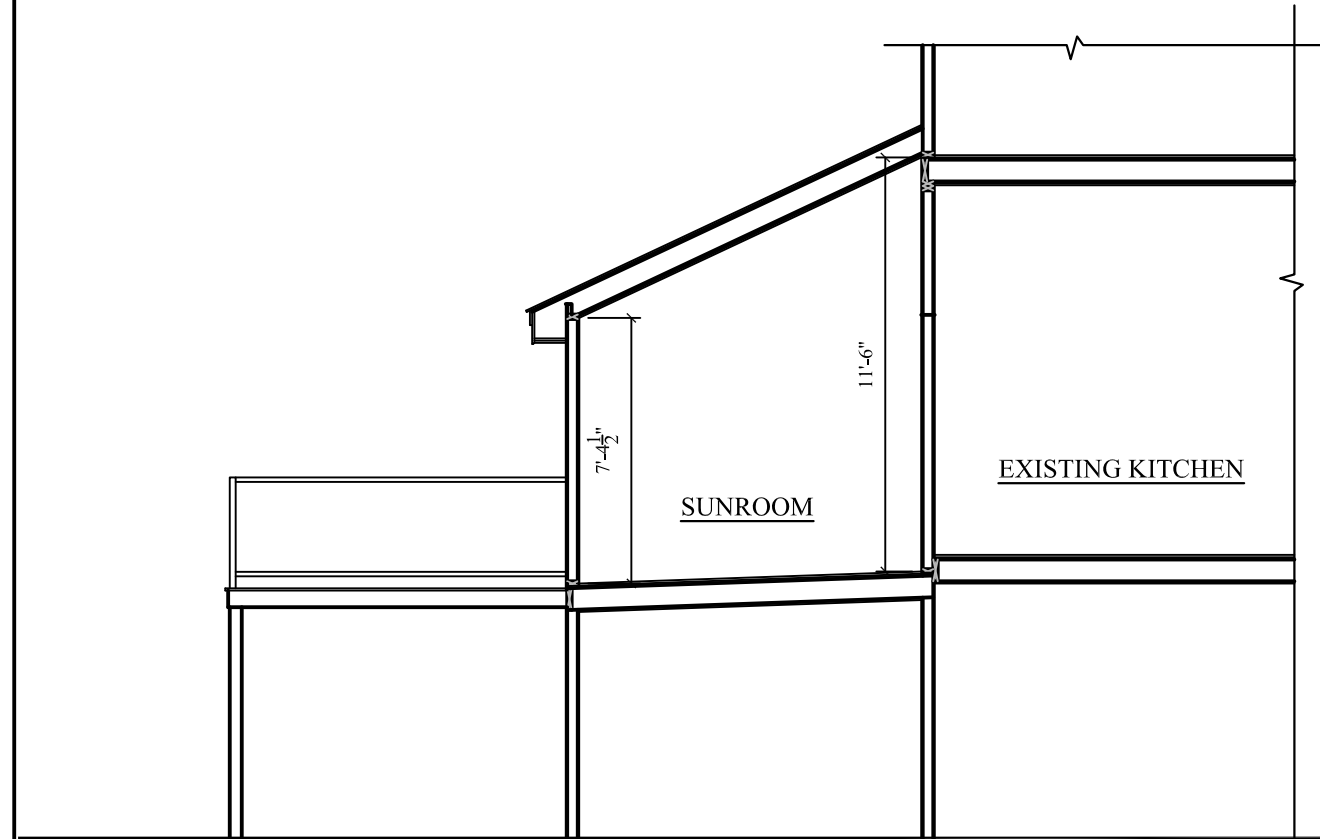
19L Inn Street
Newburyport, MA 01950

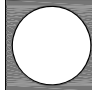
www.cwc-design.com

(978) 397 - 3233



 Existing Porch Plan
3/16" = 1'-0"



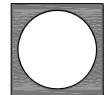
 Existing Section A
3/16" = 1'-0"

The Barrett-Harris Residence

112 High Street
Newburyport, MA

DATE: 1-25-21
REV: 1-28-21
REV: 2-5-21
REV:

EX-1.1



Existing Left Elevation
3/16" = 1'-0"

CWC Design^{INC}

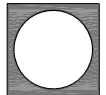
19 Inn Street
Newburyport, MA 01950 (978) 397 - 3233
www.cwc-design.com

The Barrett-Harris Residence

112 High Street
Newburyport, MA

DATE: 1-25-21
REV: 1-28-21
REV: 2-5-21
REV:

EX-2.0



Existing Rear Elevation
3/16" = 1'-0"



DATE: 1-25-21
REV: 1-28-21
REV: 2-5-21
REV:

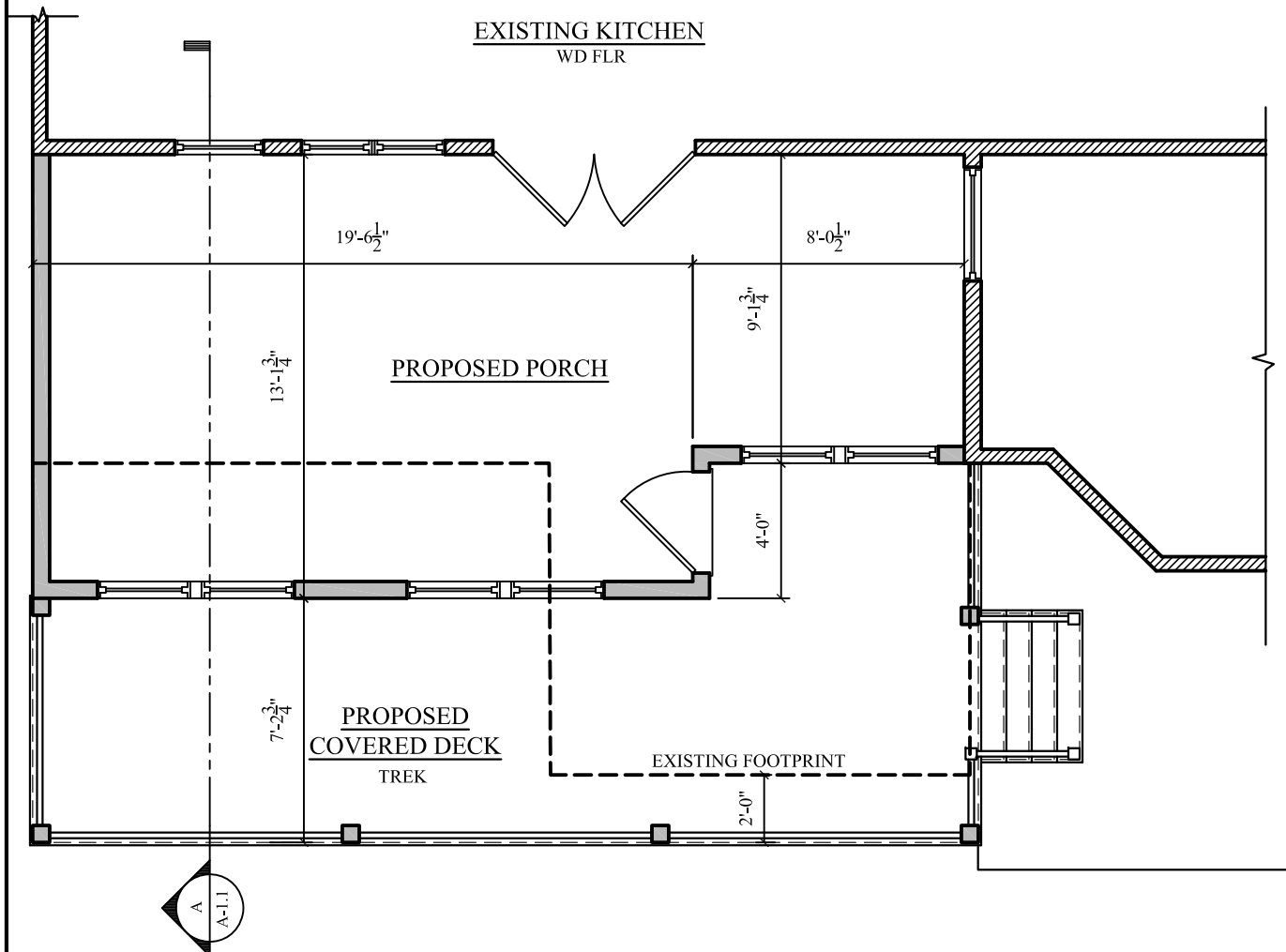
EX-2.1

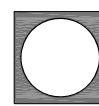
The Barrett-Harris Residence

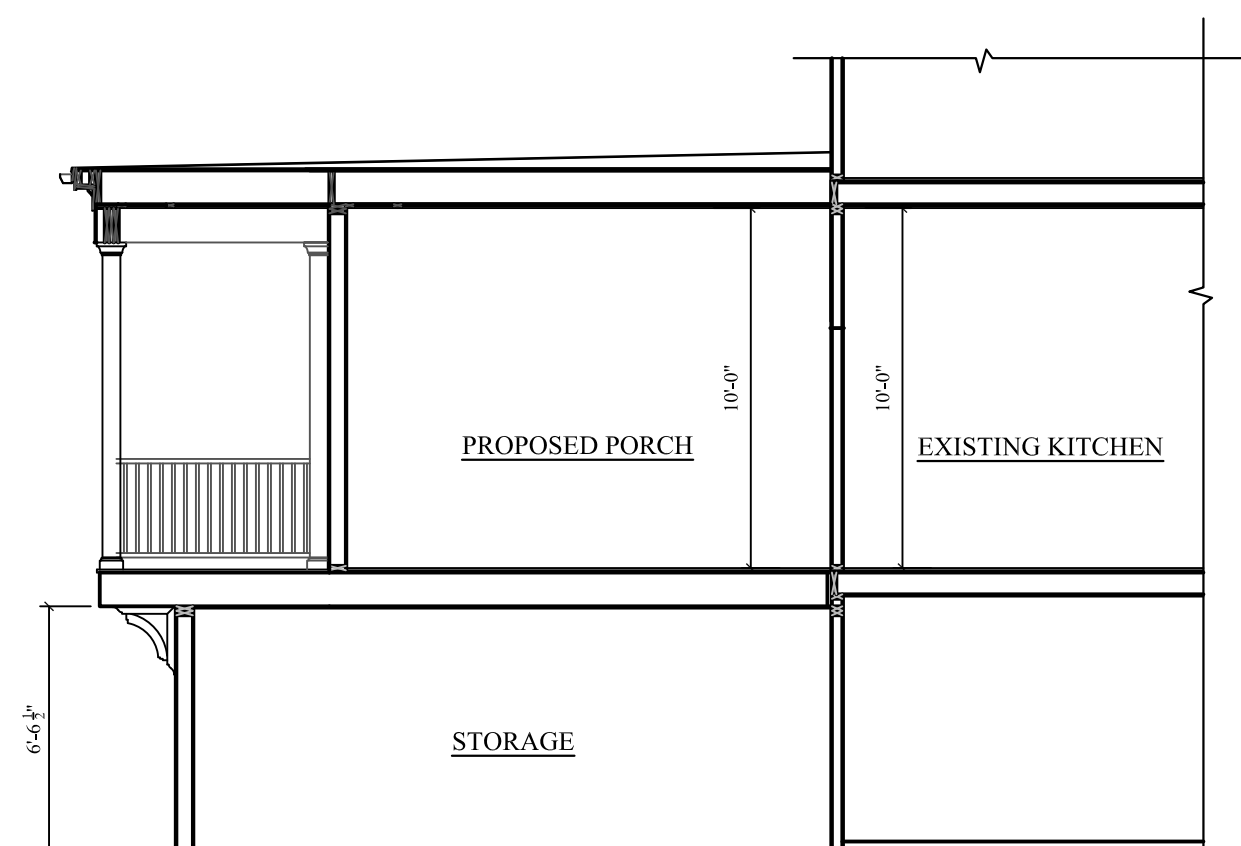
112 High Street
Newburyport, MA

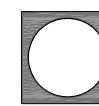
GWC Design CH

19 Inn Street
Newburyport, MA 01950 (978) 397 - 3233
www.cwc-design.com



 **Proposed Porch Plan**
3/16" = 1'-0"



 **Proposed Section A**
3/16" = 1'-0"

DATE:	1-25-21
REV:	1-28-21
REV:	2-4-21
REV:	3-13-21



The Barrett-Harris Residence
 112 High Street
 Newburyport, MA

DATE:	1-25-21
REV:	1-28-21
REV:	2-4-21
REV:	3-13-21

Proposed Left Elevation
 3/16" = 1'-0"



Proposed Rear Elevation
 3/16" = 1'-0"

GWC Design
 19 Inn Street
 Newburyport, MA 01950 (978) 397 - 3233
 www.cwc-design.com

The Barrett-Harris Residence
 112 High Street
 Newburyport, MA

DATE: 1-25-21
 REV: 1-28-21
 REV: 2-4-21
 REV: 3-13-21

A-2.1