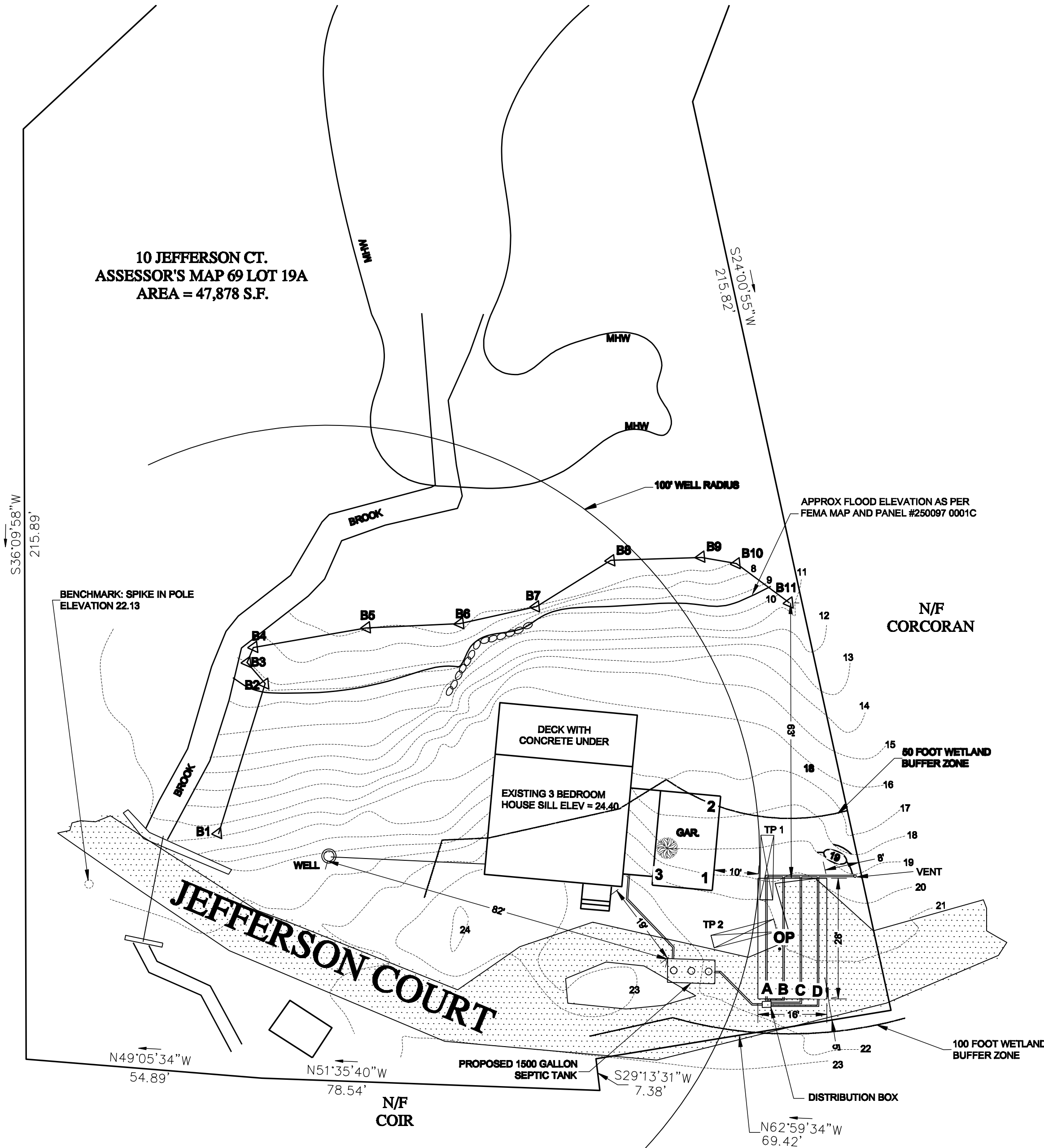


THIS IS TO CERTIFY THAT BENJAMIN C. OSGOOD, JR. HAS INSPECTED THE SUBSURFACE SEWAGE DISPOSAL SYSTEM INSTALLED AT 10 JEFFERSON CT, NEWBURYPORT MA. THE SYSTEM HAS BEEN CONSTRUCTED WITHIN ALLOWABLE ENGINEERING TOLERANCE OF 310 CMR 15.00, THE APPROVED DESIGN PLANS DATED 5-28-2013, REVISED TO 7-10-2014, AND LOCAL REQUIREMENTS, EXCEPT AS NOTED HEREIN.

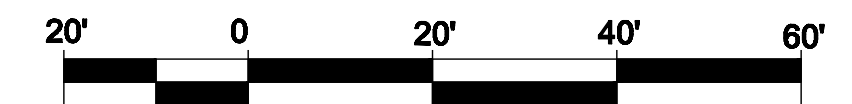


**INVERT ELEVATIONS**

	DESIGN	ACTUAL
FOUNDATION	18.78	21.18
TANK IN	18.18	21.88
TANK OUT	18.88	20.78
D-BOX IN	18.74	18.88
D-BOX OUT	18.87	18.48
LINE A	18.47	18.38
LINE B	18.47	18.38
LINE A	18.47	18.38
LINE B	18.47	18.38

**SYSTEM TIES**

1 TO TANK IN	21.8
3 TO TANK IN	20.5
1 TO TANK OUT	18.8
3 TO TANK OUT	24.2
1 TO D-BOX	20.8
3 TO D-BOX	20.8
1 TO OP	20.7
2 TO OP	20.8



**AS-BUILT SEPTIC SYSTEM**  
**10 JEFFERSON CT**  
**NEWBURYPORT, MA 01950**  
**ASSESSOR'S MAP 69, LOT 19A**

**SCALE: 1"=20'**      **OCTOBER 16, 2015**

**BENJAMIN C. OSGOOD JR. P.E.**  
**157 BLUFF STREET, SALEM, NH 03079**  
**PH: (978) 435-1324**

PLAN #: **SAB-1-2010**      DRAWN BY: **K.J.B.**      CHECKED BY: **B.C.O.E.**