

LOCUS MAP
NOT TO SCALE

SITE DEVELOPMENT PLANS FOR OR BUILDING EXPANSION ANNA JAQUES HOSPITAL

25 HIGHLAND AVENUE
NEWBURYPORT, MA 01950

OWNER/APPLICANT:
BETH ISRAEL LAHEY HEALTH
ANNA JAQUES HOSPITAL
25 HIGHLAND AVENUE
NEWBURYPORT, MA 01950

ARCHITECT:
JACA ARCHITECTS
9 BILLINGS ROAD
NORTH QUINCY, MA 02171

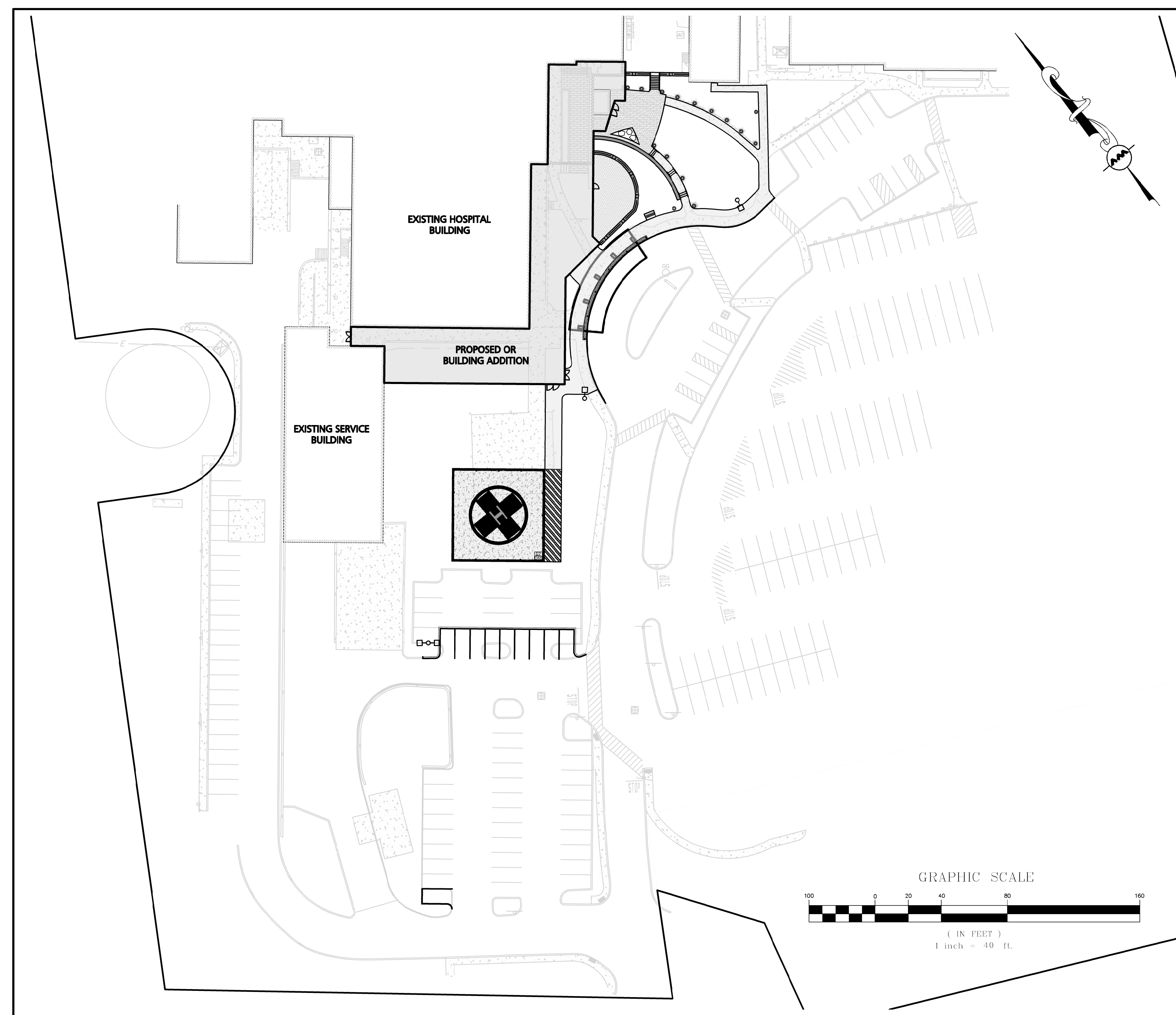
CIVIL ENGINEER:
ALLEN & MAJOR ASSOCIATES, INC.
100 COMMERCE WAY
SUITE 5
WOBURN, MA 01801

LANDSCAPE ARCHITECT:
ALLEN & MAJOR ASSOCIATES, INC.
100 COMMERCE WAY
SUITE 5
WOBURN, MA 01801

LAND SURVEYOR:
ALLEN & MAJOR ASSOCIATES, INC.
100 COMMERCE WAY
SUITE 5
WOBURN, MA 01801

STRUCTURAL ENGINEER
SCHLICK ENGINEERING, LLC
10 MAIN STREET
LAKEVILLE, MA 02347

MEP/FP ENGINEER:
R.W. SULLIVAN ENGINEERING
529 MAIN STREET, SUITE 203
BOSTON, MA 02129

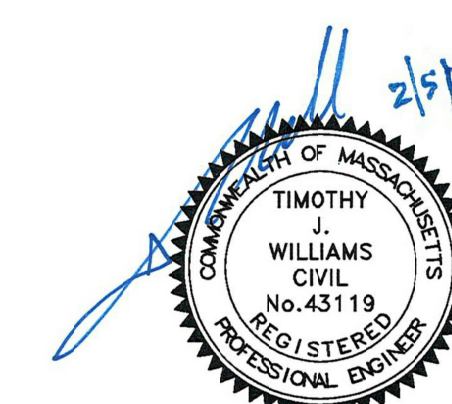


LIST OF DRAWINGS			
DRAWING TITLE	SHEET NO.	ISSUED	LAST REVISED
EXISTING CONDITIONS PLAN	V-101	11-25-19	02-05-20
ABBREVIATIONS & NOTES	C-001	11-25-19	01-08-20
ABBREVIATIONS & NOTES	C-002	11-25-19	01-08-20
SITE PREPARATION AND DEMOLITION PLAN	C-101	11-25-19	02-05-20
LAYOUT & MATERIAL PLAN	C-102	11-25-19	01-08-20
GRADING & DRAINAGE PLAN	C-103	11-25-19	01-08-20
DETAILS	C-501	11-25-19	01-08-20
DETAILS	C-502	11-25-19	01-08-20
DETAILS	C-503	-	01-08-20
LANDSCAPE PLAN	L-101	11-25-19	01-08-20
LANDSCAPE DETAILS	L-201	11-25-19	01-08-20

PREPARED BY:



WOBURN, MA • LAKEVILLE, MA • MANCHESTER, NH
Copyright © 2020 Allen & Major Associates, Inc.
All Rights Reserved

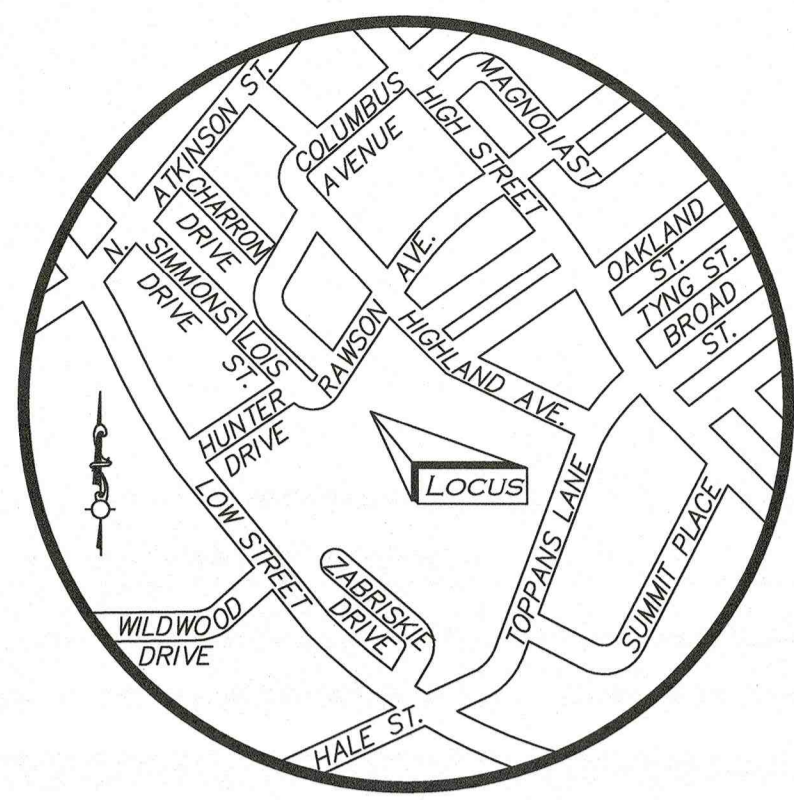


PROFESSIONAL ENGINEER FOR
ALLEN & MAJOR ASSOCIATES, INC.

RE-ISSUED FOR SITE PLAN REVIEW &
SPECIAL PERMIT: FEBRUARY 5, 2020

ISSUED FOR SITE PLAN REVIEW & SPECIAL PERMIT: JANUARY 8, 2020

ISSUED FOR LOCAL PERMITTING: NOVEMBER 25, 2019



LOCUS MAP
(NOT TO SCALE)

WE HEREBY CERTIFY THAT THIS PLAN IS THE RESULT OF AN ACTUAL ON THE GROUND SURVEY PERFORMED ON OR BETWEEN MARCH 12, 2019 AND NOVEMBER 11, 2019. THE ABOVE IS CERTIFIED TO THE BEST OF MY PROFESSIONAL KNOWLEDGE, INFORMATION AND BELIEF.

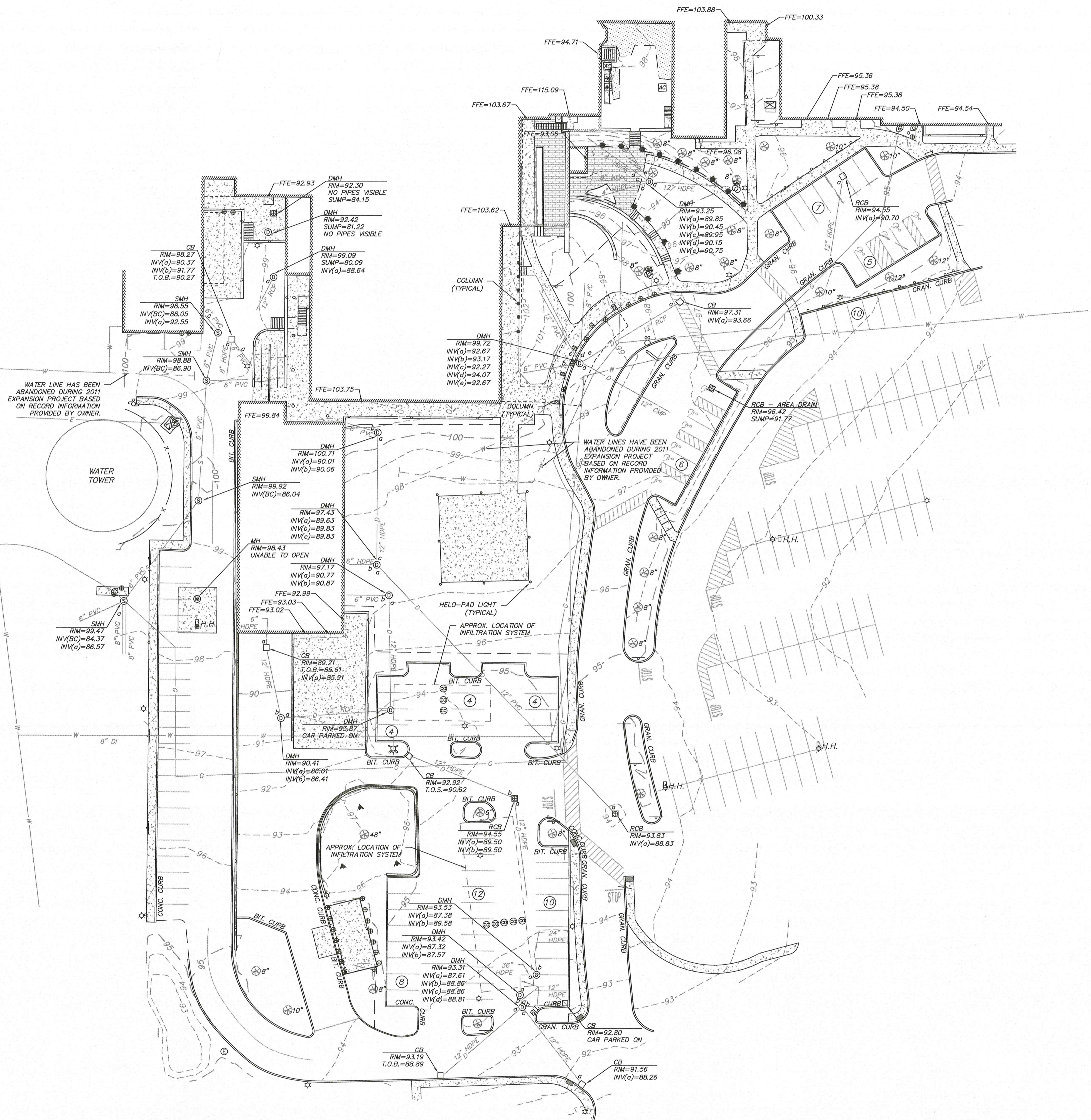
ALLEN & MAJOR ASSOCIATES, INC.

Norman Lipsitz
Feb 5, 2020
PROFESSIONAL LAND SURVEYOR FOR ALLEN & MAJOR ASSOCIATES, INC.



WATER LINE HAS BEEN ABANDONED DURING 2011 EXPANSION PROJECT BASED ON RECORD INFORMATION PROVIDED BY OWNER.

WATER LINES HAVE BEEN ABANDONED DURING 2011 EXPANSION PROJECT BASED ON RECORD INFORMATION PROVIDED BY OWNER.



LEGEND

DRAIN MANHOLE (DMH)	⊙
SEWER MANHOLE (SMH)	⊗
ELECTRIC MANHOLE (EMH)	⊕
MISC. MANHOLE (MH)	⊖
CATCH BASIN (CB)	⊠
ROUND CATCH BASIN (RCB)	⊡
BOLLARD	⊛
LIGHT	⊙
FLOODLIGHT	⊙
PEDESTRIAN LIGHT	⊙
TREE	⊙
AREA DRAIN	—
SIGN	—
SIGN	—
TRANSFORMER	—
HAND HOLE	—
AIR CONDITIONER	—
CABLE BOX	—
TELEPHONE BOX	—
ELECTRIC BOX	—
GAS METER	—
ELECTRIC METER	—
HANDICAPPED PARKING SPACE	—
IRRIGATION CONTROL VALVE	—
PARKING SPACE COUNT	—
SPOT GRADE	—
CONCRETE	—
LANDSCAPED AREA (LSA)	—
BRICK/PAVER	—
BUILDING	—
BUILDING OVERHANG	—
1" CONTOUR	—
5" CONTOUR	—
PROPERTY LINE	—
CONCRETE RETAINING WALL	—
EDGE OF PAVEMENT	—
EDGE OF BRICK	—
CURB	—
CHAIN LINK FENCE	—
STOCKADE FENCE	—
METAL RAILING	—
SEWER LINE	—
DRAIN LINE	—
GAS LINE	—
ELECTRIC LINE	—
WATER LINE	—
ABANDONED WATER LINE	—
FINISHED FLOOR ELEVATION	—
BITUMINOUS	—
CONCRETE	—
GRANITE	—
BOTTOM CENTER (BC)	—
REINFORCED CONCRETE PIPE	—
POLYVINYL CHLORIDE PIPE	—
CORRUGATED METAL PIPE	—
HIGH DENSITY POLYETHYLENE PIPE HDPE	—



9 Billings Road
North Quincy, MA 02171
Tel. 617. 769. 6300
Fax. 617. 769. 6399

MEP/FP ENGINEER
R.W. Sullivan Engineering
529 Main St, Suite 203
Boston, MA 02129
Tel. 617.523.8227

LAND SURVEY,
LANDSCAPE ARCHITECT
& CIVIL ENGINEER
ALLEN & MAJOR ASSOCIATES, INC.
100 Commerce Way, Suite 5
Woburn, MA 01801
Tel. 781.935.6889

STRUCTURAL ENGINEER
Schlick Engineering, LLC.
10 Main Street
Lakeville, MA 02347
Tel. 774.419.3796

THIS DRAWING HAS BEEN PREPARED IN ELECTRONIC FORMAT. CLIENTS REPRESENTATIVE OR CONSULTANT MAY BE PROVIDED COPIES OF DRAWINGS AND SPECIFICATIONS IN DIGITAL MEDIA FOR HIS/HER INFORMATION AND USE FOR SPECIFIC APPLICATION TO THIS PROJECT. DUE TO THE POTENTIAL THAT THE DIGITAL INFORMATION MAY BE MODIFIED UNINTENTIONALLY OR OTHERWISE, ALLEN & MAJOR ASSOCIATES, INC. MAY REMOVE ALL INDICATION OF THE DOCUMENT'S AUTHORITY ON THE DIGITAL MEDIA. PRINTED REPRESENTATIONS OF THE DRAWINGS AND SPECIFICATIONS ISSUED SHALL BE THE ONLY RECORD COPIES OF ALLEN & MAJOR ASSOCIATES, INC.'S WORK PRODUCT.

drawing by: COB
drawing checked by: HL
A&M project number: 2699-01

ISSUE	DATE
ISSUED FOR LOCAL PERMITTING	11-25-19
ISSUED FOR SITE PLAN REVIEW	01-08-20
AND SPECIAL PERMIT	
DESIGN DEVELOPMENT	01-17-20
WATER LINES ADDED	02-05-20

Mark	Revision	Date

Stamp

Drawing Title
EXISTING CONDITIONS

Scale: 1" = 30'
Drawing Number:

V-101

JACA Project Number 190042

NOTES

- NORTH ARROW IS BASED ON MASSACHUSETTS GRID COORDINATE SYSTEM (MAINLAND ZONE) (NAD 83).
- VERTICAL DATUM IS NAVD 88.
- CONTOUR INTERVAL IS ONE FOOT (1').
- WATER LINE AND ABANDONED WATER LINE SHOWN HEREON HAVE BEEN SCALED FROM RECORD PLANS USED FOR THE 2011 EXPANSION PROJECT AS PREPARED BY SBA ARCHITECTS AND PROVIDED TO ALLEN & MAJOR ASSOCIATES, INC. BY THE CLIENT.

GRAPHIC SCALE

(IN FEET)
1 inch = 30 ft.

DIG SAFE

BEFORE YOU DIG
CALL 811 OR
1-888-DIG-SAFE
1-888-344-7233

UTILITY STATEMENT
THE UTILITIES SHOWN HAVE BEEN LOCATED FROM FIELD SURVEY INFORMATION AND EXISTING DRAWINGS. ALLEN & MAJOR ASSOCIATES, INC. (A&M) MAKES NO GUARANTEE THAT THE UTILITIES SHOWN HEREON COMPRISE ALL SUCH UTILITIES IN THE AREA, EITHER IN SERVICE OR ABANDONED. A&M FURTHER DOES NOT WARRANT THAT THE UTILITIES SHOWN ARE IN THE EXACT LOCATION INDICATED. A&M HAS NOT PHYSICALLY LOCATED THE UNDERGROUND UTILITIES.

A:\PROJECTS\2699-01\B\SURVEY\DRAWINGS\CURRENT\5-2699-01-B-EC.DWG