

# CITY OF NEWBURYPORT



IN CITY COUNCIL

**ORDERED:**

March 28, 2022

**THAT**, at the recommendation of the American Rescue Plan Act (ARPA) Ad Hoc Committee, \$250,000 is hereby appropriated from the City's allocation of the Coronavirus State and Local Fiscal Recovery Funds (SLFRF) to pay costs of constructing and installing water line connection points with respect to the Amesbury Emergency Interconnection project. It is the intent that any funds remaining upon completion of this project shall be reappropriated to another project as recommended by the ARPA Ad Hoc Committee.

---

Councillor Bruce L. Vogel

---

Councillor Christine E. Wallace

---

Councillor Sharif I. Zeid

**In City Council March 28, 2022:**

Motion to refer ORDR00333, ORDR00334, ORDR00335, and ORDR00336 collectively to Budget & Finance by Councillor Zeid, seconded by Councillor Cameron. So voted.

## **American Rescue Plan Act: State and Local Fiscal Recovery Funds**

### ***City of Newburyport Allocation Recommendations***

March 22, 2022

#### **ARPA Background**

The Coronavirus State and Local Fiscal Recovery Funds (SLFRF) are a part of the American Rescue Plan Act (ARPA) and it delivered over \$350 billion to state, local, and Tribal governments across the country. The funds are meant to support the local response to and recovery from the COVID-19 public health emergency, and the Treasury department has allowed for significant flexibility in the use of these funds. The January 6 2022 Final Rule on the SLFRF stated that any municipality's first \$10M can be used for "Replacing Lost Public Sector Revenue," a broad category that permits most uses. Newburyport's entire allocation is under this amount, and can all be spend on this category.

Newburyport will receive \$5,466,707 total in SLFRF allocations, with the first half already received and the remaining \$2,733,353 coming in August 2022. These funds need to be obligated by December 31, 2024, and expended by December 31, 2026. An ARPA Ad Hoc Committee was convened in summer 2021 and approved an expenditure of \$1,000,000 to support the Phillips Drive Drainage Project. Mayor Reardon reconvened the Committee in February 2022 to discuss how to spend the remaining funds. The Committee is comprised of Councillors Bruce Vogel, Christine Wallace, and Sharif Zeid.

The Committee decided in their second meeting that based on the needs of the City, they should prioritize infrastructure projects for these funds. The Department of Public Services and the Mayor's Office provided the Committee a list of priority projects taken from the Capital Improvement Plan and others flagged by the Mayor's Capital Facilities Planning process. The Committee is recommending three projects for funding at this time. Should any of these projects come in under the allocated amount, the funds will be reallocated toward another infrastructure project recommended by the ARPA committee.

#### **Recommended Projects**

##### **Streets and Sidewalks Improvements (\$1,200,000 now, \$2,400,000 total)**

The City will appropriate \$2,400,000 to pay costs of maintaining and/or repairing public streets, ways, walkways, and sidewalks in accordance with years one and two of the City's five-year street and sidewalk improvement plan. Fifty percent of the appropriation will take place upon the City Council's vote, and the remaining fifty percent will take effect upon receipt of the second tranche of the City's SLFRF allocation in August 2022.

This plan was introduced to the City Council in their 3/14 Council Packet and is under consideration by the Neighborhoods and City Services Committee. The City is sharing information about the plan on its website and through social media, and has a petition program in place for residents to request reconsideration of the order of street and sidewalk repair.

##### **Amesbury Emergency Interconnection Project (\$250,000)**

The Department of Public Services has recommended approval, which was echoed by the ARPA Committee, of appropriating \$250,000 to pay costs of constructing and installing water line connection points in Newburyport and Amesbury. This will create hookups for an emergency interconnection line that will be utilized should Newburyport's water not be drinkable in the event of an algae bloom or another toxic event. Should an emergency occur, DPS will purchase the piping necessary to connect to

these connection points and install it so the City can utilize Amesbury's water until the emergency conditions have subsided. The City is completing an Intermunicipal Agreement with Amesbury so that the terms of such an arrangement are negotiated well in advance of needing to use it. Attached is a memo from Environmental Partners with more information about the project and why it has been recommended.

#### **Joppa Park Sea Wall (\$100,000)**

The Committee is recommending \$100,000 be appropriated to pay costs of replacing and stabilizing the walkway, which runs along the Joppa Park sea wall, including the installation of accessible paver aprons that are needed to bring the park into compliance with the Americans with Disabilities Act (ADA) standards. The sea wall will be stabilized using a specialized hardscape detail that is designed to prevent future degradation due to tidal action and increasingly intensified storms and tidal action of the Merrimack River. This will be supplemented by \$60,000 from the Morrill Foundation, and the ARPA funding will expedite the timeline for the project's completion. The project will go to bid after the ARPA funds are transferred and project construction can begin this season, shortly after the contractor is selected. We anticipate the project can be completed in this calendar year, as long as there are not too many delays due to supply chain issues.

#### **Remaining Funding and Next Steps**

Should these projects be funded, the City will have \$1,716,707 left to disburse after receiving its second tranche of funding. We have attached a list of potential infrastructure projects that are under consideration, as well as the full listing of costs. As stated earlier, the ARPA Committee has reached consensus that the remaining funds would best be used on infrastructure projects. These may include design costs for larger projects so that they could be made shovel ready in case of additional funding becoming available. The Committee has also discussed the possibilities of funding traffic safety projects, and the Central Waterfront Bulkhead should more funding be needed. The Committee will plan to meet after this allocation is complete to discuss the strategy on the remaining funds.

# MEMORANDUM

**Date:** March 14, 2022

**To** Anthony Furnari, Director, Department of Public Services

**From** Eric Kelley, PE

**CC** Tom Cusick, DPS Water Treatment Superintendent  
Jon Carey, DPS Water Distribution Superintendent  
Jon-Eric White, PE, City Engineer  
Ryan Allgrove, PE

**Subject** Newburyport – Amesbury Interconnection Memorandum of Support

Environmental Partners (EP) was contacted by the City of Newburyport (City) on August 15, 2020, in an emergency on-call capacity. An algae bloom within the Upper Artichoke Reservoir had developed, and in the event of bloom spread, the City's drinking water supply may have become inadequate. EP was tasked with evaluating an emergency interconnection with the City of Amesbury, MA, via the John Greenleaf Whittier Bridge (Interstate 95). EP prepared a technical memorandum dated August 21, 2020, summarizing the basis of design findings and recommendations for the interconnection.

As shown in Figure 1, the proposed interconnection includes 2,900 linear feet of above ground high-density polyethylene pipe (HDPE) SDR 11 pipe connected to the Amesbury 12-inch ductile iron main near the intersection of Main Street and Evans Place. The proposed alignment continues south on Evans Place, crossing under Interstate 95. The alignment then utilizes the John Greenleaf Whittier Bridge to cross the Merrimac River and connect to the Newburyport 16-inch ductile iron main located approximately 500 feet beyond the bridge abutment.

Permanent connection points to the Amesbury and Newburyport

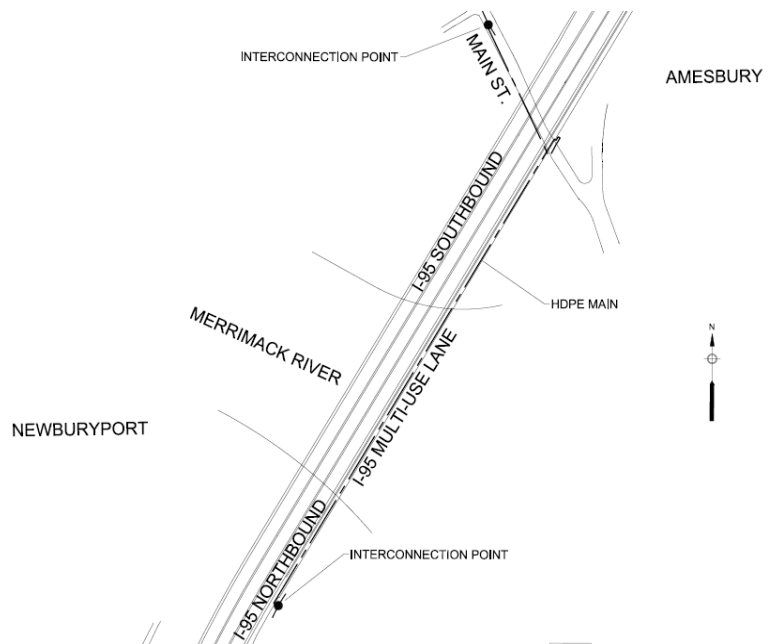


Figure 1: Proposed Newburyport to Amesbury Interconnection

distribution systems will be established under a Phase I plan. The above ground HDPE pipe installation would be completed under a Phase II plan in a future emergency scenario.

The design intent of Phase I is to install the infrastructure required for an above ground 12-inch interconnection without the need for excavation in an emergency. The proposed subsurface infrastructure includes restrained 12-inch DI pipe and fittings, isolation valves, and a manhole structure at each water system's connection points, as shown in Figure 2.

Phase II is the above ground element of the interconnection. It includes 2,900 linear feet of HDPE SDR 11 pipe and appurtenances, including a pressure reducing and flow control valve that will control the pressure and flow of water from the Amesbury water system to Newburyport.

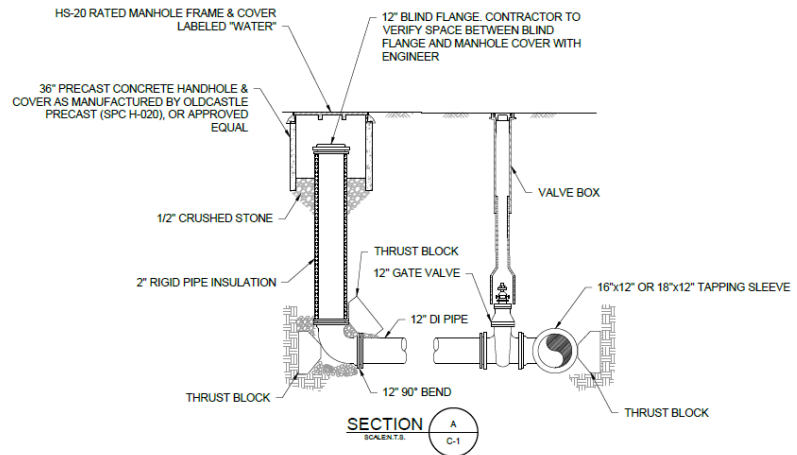


Figure 2: Proposed Subsurface Interconnection Point

Since the emergency has dissipated and time is no longer a driving factor, the City now has an expanded list of available options that were previously unattainable in emergency planning. In order to provide a high level of emergency preparedness, with minimal long-term storage impacts and at a low cost, EP recommends installing the Phase I interconnections and furnishing only essential, long lead-time equipment required for Phase II that will save the City valuable time in an emergency scenario. This option relieves the City of the burden of furnishing and storing 2,900 linear feet of HDPE pipe for a future emergency and provides the City with a high level of emergency preparedness while it investigates other potential permanent interconnection options.

EP completed an Opinion of Probable Construction Cost (OPCC) to provide the City with a funding allocation for the Phase I work and to furnish long-lead equipment for Phase II. The OPCC includes a mobilization cost and a contingency of 30% due to pandemic-related supply chain constraints. The long-lead Phase II equipment includes a pressure relief/flow control valve, a battery-powered magnetic flow meter, a check valve, and a hydrant relief valve. The OPCC does not include any additional engineering costs.

Table 1: Phase I Interconnection OPCC

Phase I	OPCC
Newburyport Interconnection	\$75,150
Amesbury Interconnection	\$69,675
Phase II long-lead equipment	\$28,425
Contingency (30%)	\$51,975
<b>TOTAL</b>	<b>\$225,225</b>

ARPA candidates

ARPA candidates				Department or division	If there is anything else to consider regarding this asset, please describe:	Priority	Estimated Cost
Department	Contact Person	Asset Name	What type of asset is this?	maintains the asset?		Year (1-5)	
DPS SEWER	Jamie Tuccolo	WATER ST	Building	SEWER	Currently being designed, this station might (should) be relocated to State property due to current proximity to Merrimac (8') and lack of access. Jamie is putting together a package of info.	1	\$1,000,000
DPS WATER	Jamie/Tom	WTP/SPRING LN	Building	WATER	SCADA, controls, water treatment etc. Upgrades phase 1	1	\$170,000
DPS WATER	Jamie/Tom	PLUM ISLAND STATION UPGRADE	Building	WATER	Chlorine booster	1	\$100,000
DPS SEWER	Jamie /Chris	WWTF/WATER ST	Building	SEWER	WWTF and sewer system resiliency plan	1	\$2,200,000
DPS SEWER	Jamie/Chris	WWTF/WATER ST	Building	SEWER	Aeration system upgrade	1	\$125,000
DPS SEWER	Jamie/Chris	WWTF/WATER ST	Building	SEWER	Effluent channel coatings repair	1	\$120,000
DPS SEWER	Jamie/Chris	WWTF/WATER ST	Building	SEWER	New clarifier FY23	1	\$590,000
DPS	Jamie Tuccolo	16 A/B/C PERRY WAY	Building	DPS	Salt shed	1	\$360,000
DPS	Jamie Tuccolo	CITY HALL	Building	DPS	City Hall roof replacement	1	\$424,250
DPS	Jamie Tuccolo	STREETS	Streets	DPS	Requests in CIP	1	\$2,000,000
DPS	Jamie Tuccolo	STREETS	Streets	DPS	Requests in CIP 2022- Phillips Drive, Hale St	1	\$4,275,000
DPS	Jamie Tuccolo	DAM	Bridge	DPS	Lower Artichoke reservoir dam improvement	1	\$500,000
DPS	Jamie Tuccolo	BRIDGES	Bridge	DPS	Plummer Spring Bridge	1	\$700,000
DPS	Jamie Tuccolo	SIDEWALKS	Sidewalks	DPS	Requests in CIP	1	\$500,000
DPS	Jamie Tuccolo	UTILITIES	Utilities	DPS	Water main replacement	1	\$250,000
DPS	Jamie Tuccolo	UTILITIES	Utilities	DPS	Indian Hill Water Line Phase 1	1	\$450,000
DPS	Jamie Tuccolo	UTILITIES	Utilities	DPS	Emergency water connection with Town of Amesbury	1	\$200,000
DPS	Jamie Tuccolo	UTILITIES	Utilities	DPS	Replace aging water, sewer and drainage systems in downtown area	1	\$1,500,000

DPS	Jamie Tuccolo	WATER	Water Supply Protection	DPS	Requests in CIP	1	\$250,000
POLICE	Mark Murray	POLICE STATION	Building	POLICE	Dispatch upgrade	1	\$475,000
PARKS	Lisë Reid	ATKINSON COMMON, LOWER	Park	PARKS	Drainage and parking safety improvements	1	\$800,000
PARKS	Lisë Reid	INN ST MALL/ BYRON'S COURT	Park	PARKS	Elevated walkway repairs	1	\$50,000
PARKS	Lisë Reid	JOPPA PARK	Park	PARKS	Walkway repairs along seawall, damage due to tidal action	1	\$100,000
HBR	Paul Hogg	CHANNEL DREDGE	Other	HBR	Channel dredge		\$150,000
PLANNING	Andy Port	BULKHEAD	Other	PLANNING	Central waterfront, east bulkhead	1	\$3,000,000

\$20,239,250