

# City of Newburyport Snow Plan



## Policies and Operations Information Session

Winter 2022-23

# Goals

- Make City roadways as safe as possible in all winter weather conditions
- Ensure constant communication with residents and businesses
- Deliver effective service, under stressful conditions

# Snow Emergency Parking Ban

## What happens

- Notice of parking ban is posted 6 hours prior to ban going into effect
- The city opens municipal lots for residents to park

## Reason for ban

- Allows crews to safely plow curb to curb on all City accepted roadways

# Snow Emergency Notifications/Updates

- Blue Lights flashing
- City Website E-Alert - [CityofNewburyport.com](http://CityofNewburyport.com)
- DPS reverse notification system-WaterSmart
- City of Newburyport Social Media
  - City Website
  - Facebook (DPS and City)
  - Instagram (DPS and City)
  - Twitter (City)
- Snow Emergency Line 978-463-0472



**Sign up for E-Alerts!**



Document Center



Phone Directory



Contact Us



E-Alerts




Online Services



FAQ

### Mayor's Corner



Mayor Sean Reardon

[f](#) [t](#)

[City of Newburyport Official Blog](#)

It is my pleasure to welcome you to the City of Newburyport website. This web-

[Fall Hydrant Flushing Schedule Read more »](#)

- [News](#)
- [Public Meetings Calendar](#)
- [Quick Links](#)
- [City Happenings](#)



**City Hall will Host Trick or Treat on Thursday, October 27th at 5pm »**

We have lots of exciting events going on across the city for Halloween, and want to remind everyone to enjoy and stay...



**Waste Bans for Mattresses and Textiles »**

Things are changing in Massachusetts! As of November 1, 2022, mattresses and textiles will no longer be allowed in the...



**National Grid to Hold Meeting on Electricity Costs for Residents »**

Mayor Sean Reardon, the City's Sustainability Office, and the Energy Advisory Committee (EAC) will be hosting a meeting...



# WELCOME TO THE WATERSMART PROGRAM

Dear Water & Sewer Customer,

The City of Newburyport is excited to introduce you to the WaterInsight Program. It's part of our commitment to provide you with the best tools to better manage your water use and your bill. We encourage you to get started today by logging on to the WaterSmart Web Portal.

Sincerely,  
The Department of Public Services Team

### Enjoy New Features

- Pay by Phone (978-672-4340)
- Auto Pay
- Leak Alerts
- Service Alerts

### 3 STEPS TO START SAVING

#### 1. Log On

<https://newburyport.watersmart.com>

#### 2. Register

Use your account number listed on your water bill to register.

#### 3. Personalize


Answer our simple profile survey to provide Accurate comparisons to similar households.


LOG ON AND START SAVING


<https://newburyport.watersmart.com>

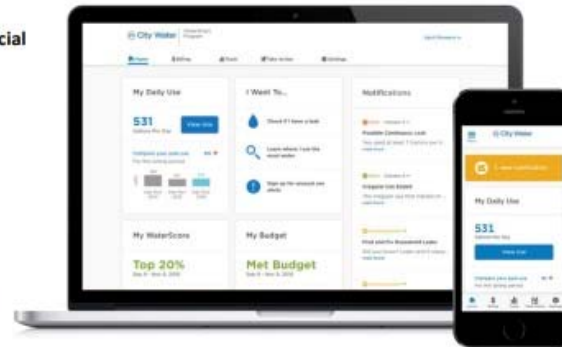
### WHAT YOU'LL GET

The WaterSmart Portal will help you track your commercial & residential water use.

 **How you compare.** See how your water use compares to similar homes.

 **Ways to save.** Get personalized, step by step actions.

 **News and Events.** Receive notifications regarding service repairs, hydrant flushing and other DPS service announcements.



City of Newburyport Department of Public Services  
16C Perry Way  
Newburyport Ma. 01950  
978-465-4420 or e-mail us at [wsbilling@cityofnewburyport.com](mailto:wsbilling@cityofnewburyport.com)

# Blue Light Locations

- March's Hill at Bromfield St.
- Route 113 at across from Russell Terrace
- Route 113 at Route 95 Bridge
- Route 113 at Hoyt's Lane
- Water St. at Shandel Dr.
- Market Square
- Storey Ave, Ferry Rd Mosley Ave Intersection
- Malcolm Hoyt Dr. at Parker St.
- High St. at State St.
- Route 1 Rotary and State St.
- Route 1 at Merrimac St.
- Merrimac, Moseley and Spofford (Roundabout)
- Storey Ave. across from Daniel Lucey Way
- Green St. at Merrimac St.
- Low St at Graf Rd.



# Street Parking During Parking Ban

- On-street parking is prohibited on all City streets when parking ban is in effect
- Violators will be towed at owner's expense
- Residents can park at designated City lots for duration of snow emergencies
- Paid parking is also available at the Titcomb St. garage at an hourly rate





# Snow Emergency Parking Lots

- Unicorn St. Parking Lot
- Green St. Parking Lot
- Waterfront Trust Parking Lot
- NRA West Parking Lot
- NRA East Parking Lot
- Tracey Parking Lot
- State St. & Harris St Lot
- Prince Place Lot
- Titcomb St. Garage (paid parking)

\*Park at own risk

# Cleaning Parking Lots

- Once snow emergency ends, in accordance with City ordinance chapter 13 sec.181 vehicles must be removed from lots within 12 hours of the end of the parking ban, allowing DPS to fully clear the parking lot
- The faster vehicles are removed from lots, the quicker DPS can fully remove snow and prepare lots for future storms



# Parking Ban Not Only For Vehicles

- Dumpsters, trash and recycling bins
- Trailers, construction equipment
- Sporting equipment: basketball hoops, hockey nets, etc.
- DPS is not responsible for damage incurred to personal items left in the right of way



# DPS Snow Team

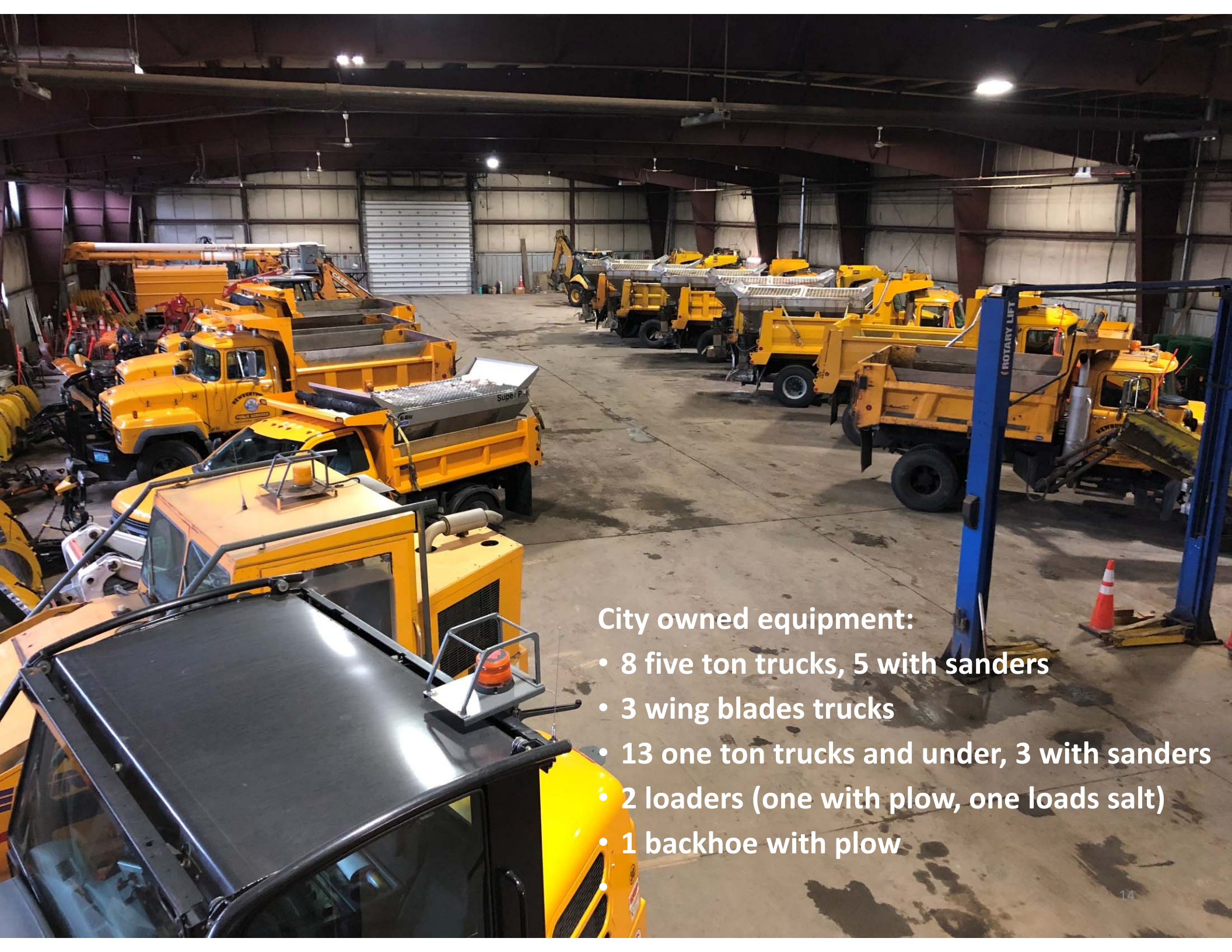
Director  
Deputy Director  
Foreman  
Dispatchers  
Route checkers  
City Employees  
15 to 20 Contractors



# Equipment



WING BLADE, THIS IS ONE OF THREE  
THE CITY USES TO PLOW MAINS  
THROUGHOUT THE CITY



**City owned equipment:**

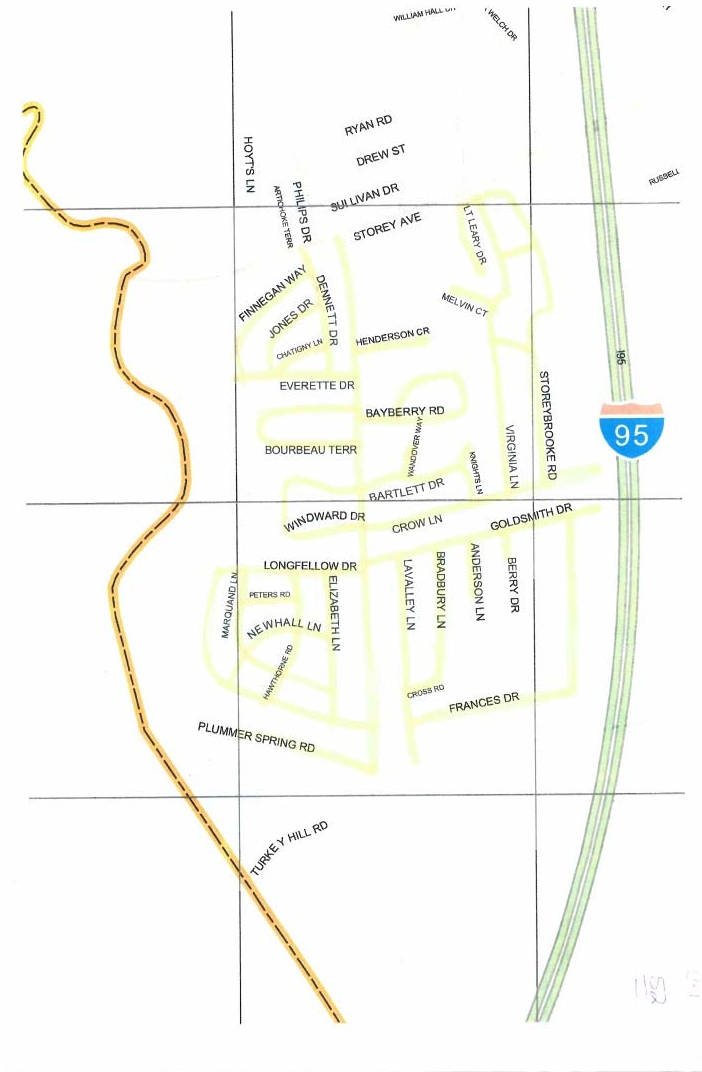
- 8 five ton trucks, 5 with sanders
- 3 wing blades trucks
- 13 one ton trucks and under, 3 with sanders
- 2 loaders (one with plow, one loads salt)
- 1 backhoe with plow

# Step 1: Pre-Treatment

- Pretreatment begins approximately 4-6 hours prior to predicted storm
- Pretreatment helps prevent snow from bonding/packing to pavement making plowing more effective, keeping traffic safely moving



# 1 of 8 Salting Routes in City

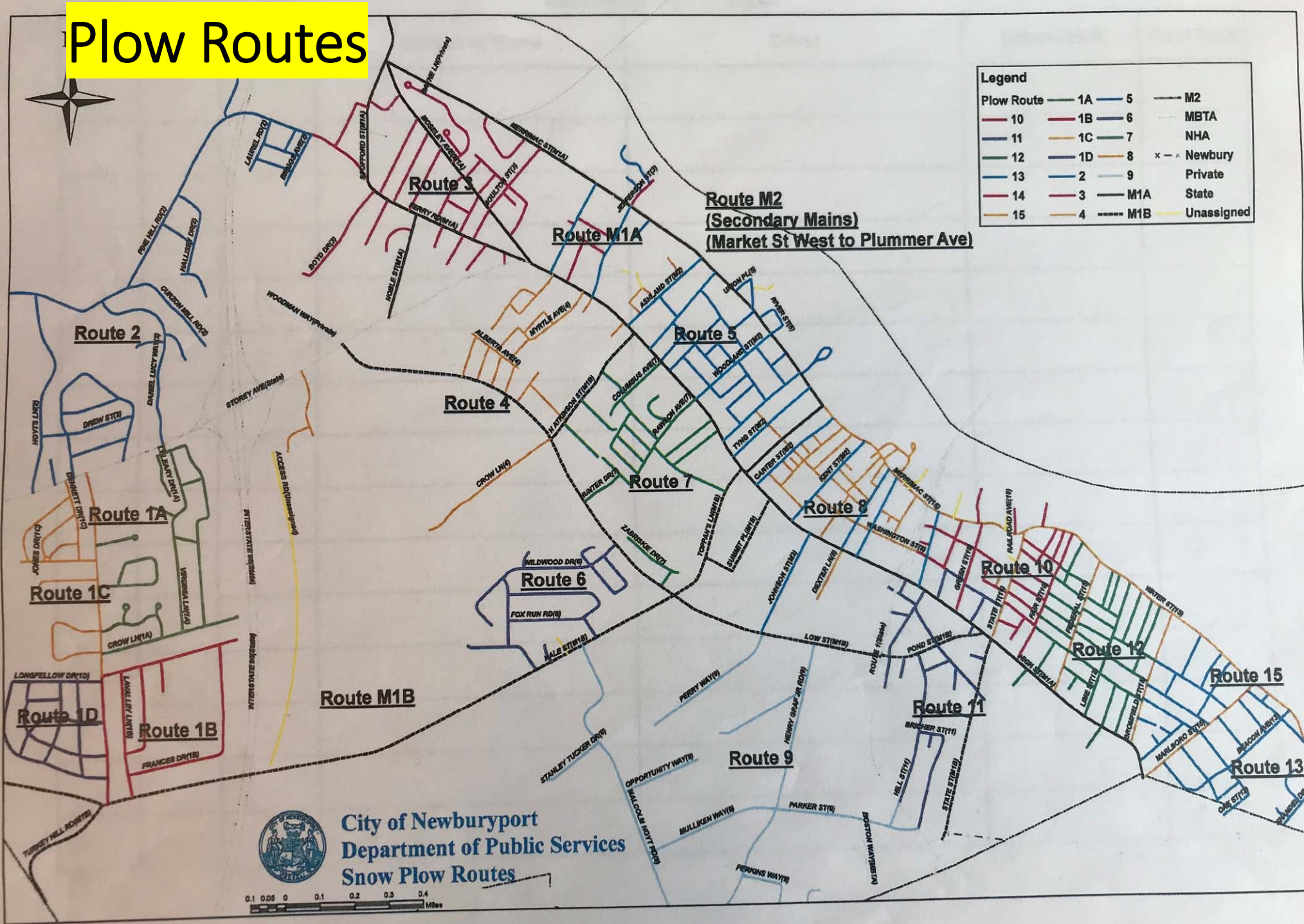




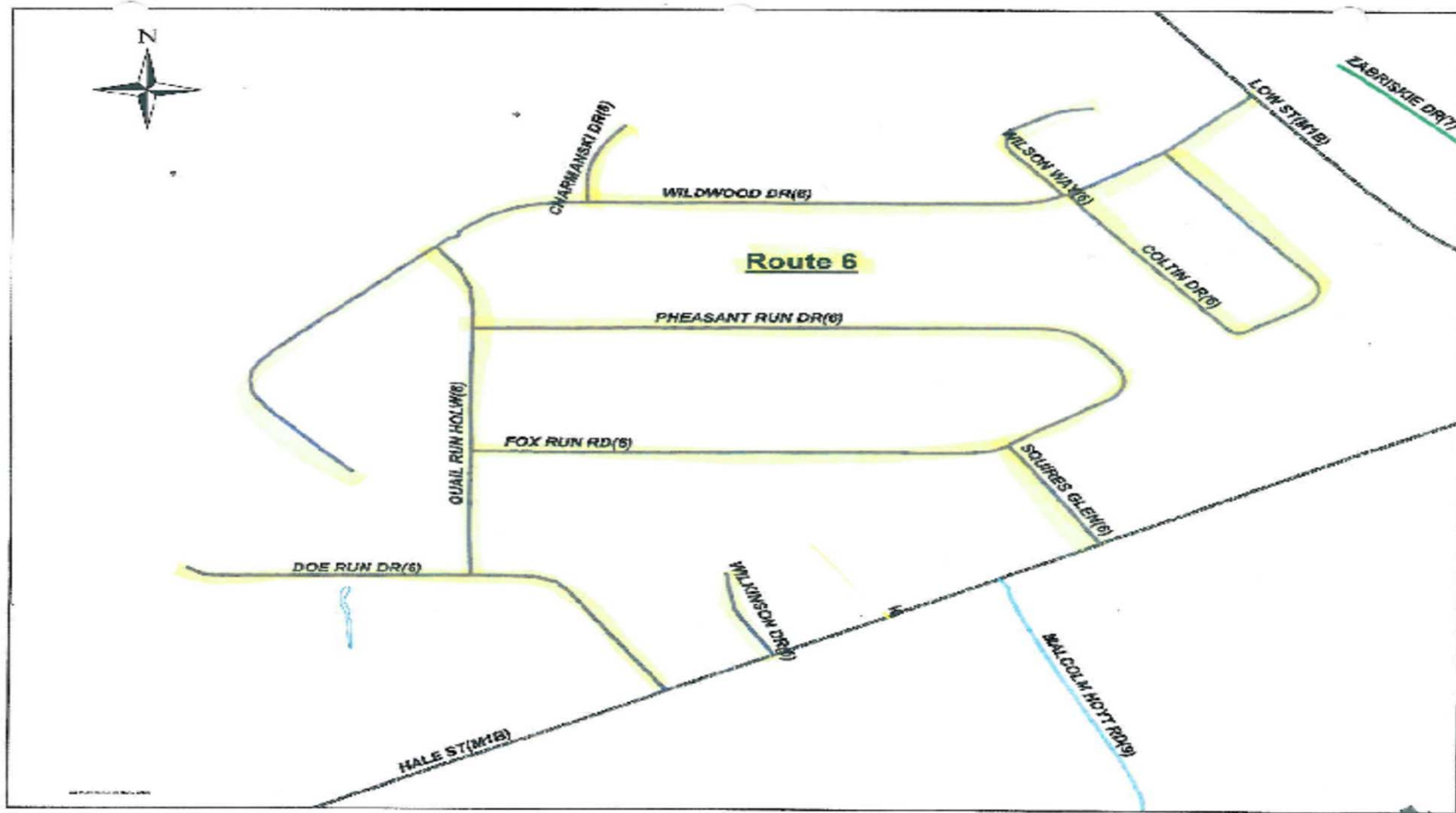
## Step 2: Plowing

- Plowing begins when snow accumulates 2"+
- 48 Pieces of equipment
- 50 Personnel (employees & contractors)
- 20 Plow routes
- Plowing operations continue until storm subsides and roads are clear
- 136 lane miles of accepted roadway is plowed
- Please keep at least 200 feet from any plow
- Never attempt to pass a plow.

# Plow Routes



# Highlighted area individual route example

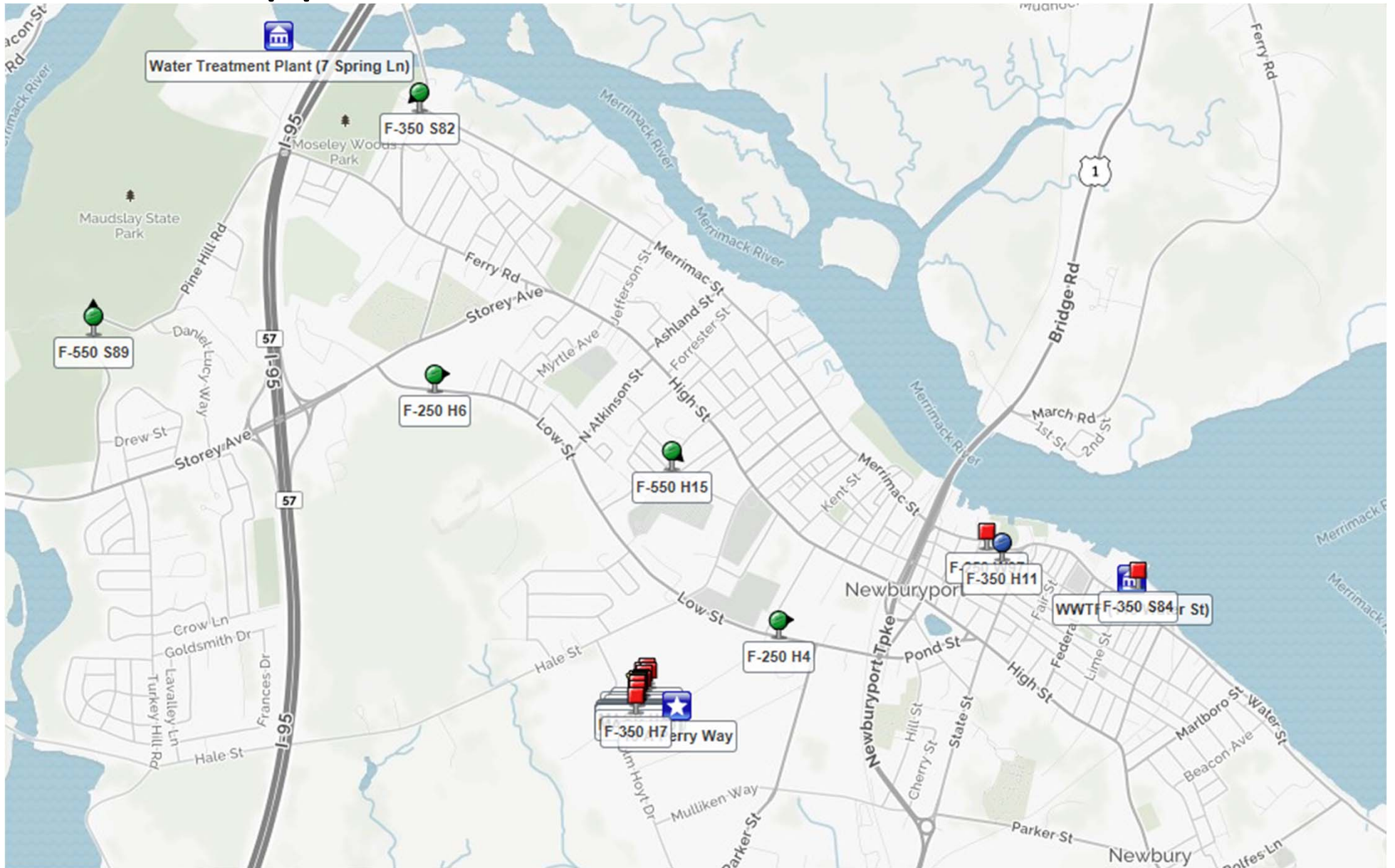


# DPS Snow App

- Track plowing operations using GPS
- Safety for drivers
- Makes plowing more efficient
- More timely response
- Available data, analytics
  - Fuel consumption
  - Idle time
  - Speed of vehicles
  - Location
  - Etc.



# Snow App GPS



# Step 3: Post Storm Clean Up, City responsibility:

- School sidewalk routes
  - Crossing guard locations
- Ramps at intersections
- Rail Trail
- Removal of snow piles
- Final clearing of streets





# Trash Collection

- City makes every effort to maintain trash collection schedule during inclement weather
- Do not place dumpsters, trash or recycling bins in the streets, per City ordinance Chapter 12 sec. 12-1
- City will not be responsible for damage of trash bins placed in street during Snow Emergency



# Important Points

- Per City ordinance Chapter 12 sec. 12-7 No blowing/ pushing/shoveling / throwing, etc. snow from driveways/sidewalks into the street
- Keep vehicles, trash barrels, etc. off the streets when parking ban is active
- If you are physically able, help clear fire hydrants of snow near your home
- The fewer obstacles that hinder operations, the faster the job gets completed
- Snow plow operators are doing their jobs, plowing is one of the duties they are hired to perform
- Do not allow children to play or build snow forts near street during plowing operations

# Sidewalks

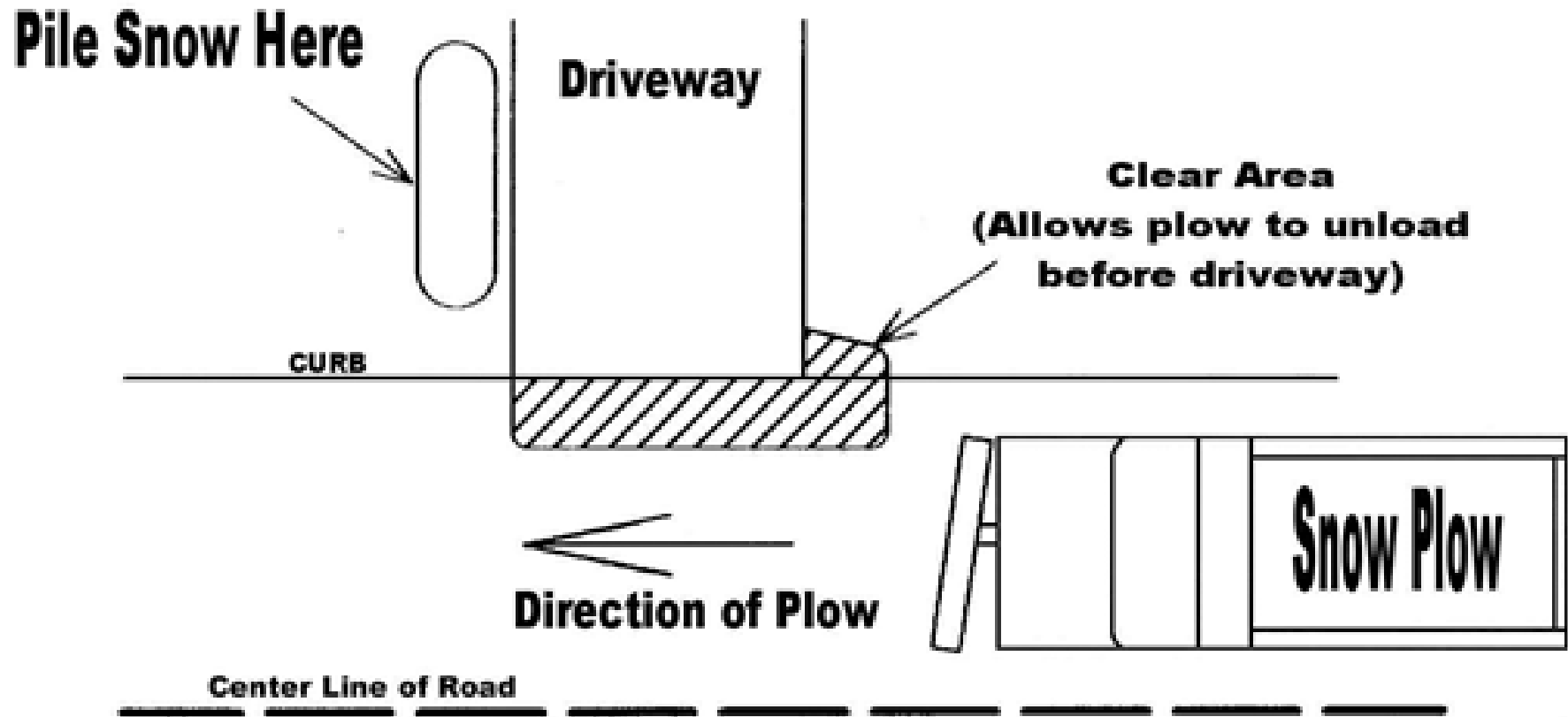
- City Ordinance Chapter 12- Sec. 12-52 requires property owners to remove snow and ice within 6 hours after the snow ceases to fall in the daytime and before noon if it ceases in the nighttime



# HELP US, HELP YOU

tips/ideas on shoveling your driveway

## Driveway Plowing Policies



# Hydrants, Catch Basins, and Exhaust Vents

- Help reduce street flooding by shoveling out catch basins near your home if you are physically able
- Help keep Newburyport safe by shoveling around any hydrant near your home
- Protect your home and your family by making sure exhaust vent for heating system is clear from snow or any debris





# *Snow Angels*

**NEIGHBORS** HELPING **NEIGHBORS**



- Joint venture between Newburyport Youth Services and the Newburyport Council on Aging, is a voluntary snow removal service for senior citizens and persons with physical disabilities.
- The program's goal is to help bring together residents who want to keep their sidewalks clear, but are physically unable to do so, with volunteers who want to help out their community.
- If you want to volunteer, or are looking for some assistance with snow removal at your home, register online today or call Newburyport Youth Services at (978) 465-4434.

[NewburyportYouthServices.com/community/the-snow-angel-program](https://NewburyportYouthServices.com/community/the-snow-angel-program)

# Takeaways

- Sign up for E-Alerts on **CityofNewburyport.com & Newburyport.watersmart.com**
- Like and follow City of Newburyport's Facebook, Twitter, Instagram accounts
- Use Snow Emergency Information Line
  - 978 -463 -0472
- Follow instructions and snow policies
- Limit unnecessary travel during snow events
- Follow Ordinances for snow removal
- Help others in need
- Stay Safe!