

NEWBURYPORT SCHOOL COMMITTEE

NEWBURYPORT, MASSACHUSETTS

**School Committee Business Meeting
amended**

Monday, November 7, 2022

6:30PM

**SC Packet Checklist: SC Business Meeting Agenda November 7, 2022
SC Business Meeting Agenda Notes November 7, 2022
SC Business Meeting Minutes October 17, 2022
Transportation Committee Report
Draft Budget Development Schedule
NPS District Strategic Goals SY2022-2023
New School Discipline Requirements**

Newburyport Public Schools
Newburyport, MA
School Committee Business Meeting
Monday, November 7, 2022

6:30 PM, Library, Newburyport High School, 241 High Street, Newburyport, MA 01950

The Mission of the Newburyport Public Schools, the port where tradition and innovation converge, is to ensure each student achieves intellectual and personal excellence and is equipped for life experiences through a system distinguished by students, staff, and community who: - practice kindness and perseverance - celebrate each unique individual - value creativity; experiential, rigorous educational opportunities; scholarly pursuits; and life-long learning - provide the nurturing environments for emotional, social, and physical growth - understand and embrace their role as global citizens.

Please note: The listing of matters are those reasonably anticipated by the Chair which may be discussed at the meeting. Not all items listed may in fact be discussed and other items not listed may also be brought up for discussion to the extent permitted by law. The meeting will be televised locally live on Comcast Channel 9 & streamed via <https://ncmhub.org/share/channel-9/>.

Business Meeting Agenda:

1. Call to Order

2. Public Comment

3. Student Recognition

4. *Consent Agenda (warrants and minutes 10-17-2022) – possible Vote

5. Student Representative Report

6. *Transportation Committee Report – possible Vote – Juliet Walker

7. MASC/MASS Joint Conference Update – Juliet Walker

8. FY24 Budget Guidelines & Schedules – Superintendent Sean Gallagher

9. District Goals 2022-2023 – Superintendent Sean Gallagher

10. Subcommittee Updates

- a. Finance Subcommittee – Brian Callahan
- b. Policy Subcommittee – Juliet Walker
- c. Joint Education Subcommittee – Bruce Menin
- d. Superintendent Evaluation Subcommittee – Bruce Menin
- e. Transportation Advisory Committee – Juliet Walker

11. Superintendent's Report

12. New Business

13. *Executive Session – vote

Pursuant to M.G.L. c. 30A, Section 21(a)(1) to discuss the reputation, character, physical condition or mental health, rather than professional competence, of an individual, or to discuss the discipline or dismissal of, or complaints or charges brought against, a public officer, employee, staff member or individual.

*Possible Vote

Adjournment

The School Committee reserves the right to call **executive session, as provided under Chapter 30A, Section 21(a)(2), of the General Laws to discuss strategy sessions in preparation for negotiations, collective bargaining and/or potential litigation.

**Newburyport School Committee
Meeting Agenda Notes**

Monday, November 7, 2022

6:30PM @ Library, Newburyport High School, 241 High Street, Newburyport, MA 01950

AGENDA NOTES

The listing of matters are those reasonably anticipated by the Chair which may be discussed at the meeting. Not all items listed may in fact be discussed and other items not listed may also be brought up for discussion to the extent permitted by law. The meeting will be televised locally live on Comcast Channel 9 or stream via <https://ncmhub.org/share/channel-9/>.

Business Meeting Agenda

3. Student Recognition
 - a. The ***Certificate of Academic Excellence*** is designed by the Massachusetts Association of School Superintendent's (MASS) to award academic excellence and is to be given each year to a high school senior who has distinguished themselves in the pursuit of excellence during their high school career. The 2022-2023 recipient is: Olivia Hansen
 - b. The ***Award for Academic Growth and Student Leadership in Learning*** is offered to NESDEC-affiliated school districts in New England by the National School Development Council (NSDC). This award is presented to high school seniors who have consistently pursued a high level of academic effort, and who have also served as positive role models for the student body. Recipients of the award exemplify admirable character and accomplishment. The following seniors are the 2022-2023 recipients of this award: Avery Hochheiser and Riya Kaur
4. *Consent Agenda (warrants & minutes 10-17-2022) – *possible Vote*
5. Student Representative Report: *NHS students Olivia Hansen & Avery Hochheiser will provide the report.*
6. *Transportation Committee Report – *possible Vote*
Juliet Walker will present the Transportation Committee Report (included in the packet).
7. MASC /MASS Joint Conference Update
Juliet Walker will provide an update of the 77th Annual Meeting and MASC /MASS Joint Conference that was held in Hyannis, MA on November 2 – 5, 2022. This year's theme was Promoting Equity, Diversity and Inclusion: Constructing the Narrative to Define the Message.
8. FY24 Budget Guidelines & Schedules: *Superintendent Sean Gallagher will discuss the FY24 guidelines.*
9. District Goals 2022-2023: *Superintendent Sean Gallagher will review the 2022-2023 District Goals (attached)*
10. Subcommittee Updates
 - a. Finance Subcommittee – Brian Callahan
 - b. Policy Subcommittee – Juliet Walker
 - c. Joint Education Subcommittee – Bruce Menin
 - d. Superintendent Evaluation Subcommittee – Bruce Menin
 - e. Transportation Advisory Committee – Juliet Walker
11. Superintendent's Report: *New School Discipline Requirements (attached), November 8th ERD, and the NEF Auction*
12. New Business

** continued next page **

** continued from previous page **

13. *Executive Session – vote

Pursuant to M.G.L. c. 30A, Section 21(a)(1) to discuss the reputation, character, physical condition or mental health, rather than professional competence, of an individual, or to discuss the discipline or dismissal of, or complaints or charges brought against, a public officer, employee, staff member or individual.

FYI: Upcoming Dates:

- ✓ **Early Release Day** – Tuesday, November 8
- ✓ **Veterans Day:** Friday, November 11 – schools closed
- ✓ **NEF Auction** – Saturday, November 12 @ City Hall Auditorium
- ✓ **Policy Subcommittee Meeting:** Monday, November 14 @ 7PM
- ✓ **Joint City Council & School Committee Meeting:** Tuesday, November 15, 2022 @ 6:30PM
- ✓ **NHS School Council** – Tuesday, November 15 @ 5PM
- ✓ **School Committee Business Meeting:** Monday, November 21 @ 6:30PM

*Possible Vote

NEWBURYPORT SCHOOL COMMITTEE BUSINESS MEETING
Senior Community Center, 331 High Street, Newburyport, MA 01950
Monday, October 17, 2022

**Present: Mayor Sean Reardon, Sarah Hall, Juliet Walker, Bruce Menin, Steve Cole
Brian Callahan**

CALL TO ORDER / ROLL CALL PLEDGE OF ALLEGIANCE:

Vice Chairman Sarah Hall called the School Committee Business Meeting of the Newburyport School Committee to order at 6:30 PM. Roll call found all members present, except **Mayor Sean Reardon** who arrived late at 7:25 PM. All those present stood for the Pledge of Allegiance.

PUBLIC COMMENT:

Sandy Moore, 170 Otis Place She spoke about the fair share amendment.
Deidre Budzyna, 11 Cushing Ave. She spoke about the fair share amendment.

STUDENT RECOGNITION:

First grade student, Declan Quimby, was recognized for helping Ms. Rachel Brown distribute stamps at the end of the day for students who are displaying expected behaviors in the hallway and displaying our clipper values.

CONSENT AGENDA:

Warrants:

Motion:

On a motion by **Brian Callahan** and seconded by **Bruce Menin** it was

VOTED: To approve, receive and forward to the City Auditor for payment the
 following Warrant:
 Warrant 8068 FY23
 Warrant 8069 FY22
 A-Warrant
 \$531,850.40

Motion Passed

Mayor Reardon absent for vote

Minutes:

On a motion by **Bruce Menin** and seconded by **Steve Cole** it was

VOTED: To approve, receive and file the following:
 School Committee Business meeting minutes of Monday,
 October 3, 2022.

Motion Passed

Mayor Reardon absent for vote

STUDENT REPRESENTATIVE REPORT:

NHS Students Olivia Hansen and Avery Hochheiser provided the following report:

- Last Wednesday the 10th and 11th graders displayed hard work and perseverance while taking the PSAT exam. The seniors were able to schedule college visits, do job shadowing or work with the senior English teachers on their college application essays. The Freshmen came in that day and were involved in team building activities along with other several activities planned by the guidance department.
- Last Friday the National Honor Society students organized a blood drive with the Red Cross. They managed the entire event with support from their advisor, Ken Cole. They coordinated with the Red Cross, helped with the set up, managed sign-ups and provided moral support for all the donors. Due to their work, 42 people can benefit from the units of blood collected during the drive.
- This coming Friday the Homecoming is being held at the High School.
- Caroline Metzdorf earned a National Recognition Honor based on her performance on college board assessments of the PSAT and AP exams.
- Senior Tuala Sullivan, recent grad Charlie Grossman, and 2019 grad Lynn Omondi wowed an audience with their original poetry at Whitman on Walls, a project that engages 60 performers from around the globe, produced by Compagnia de Colombari.
- High School Sports Update
 - Boys Soccer 14-0 Defeated Pentucket 3-0 to win ALS Cup
 - Girls Soccer 13-1 Defeated Pentucket 3-0 to win ALS Cup
 - Volleyball 13-2
 - Field Hockey 9-2-2
 - Girls XC 4-0
 - Boys XC 4-0
 - Football 4-2
 - Golf 13-4
- Nock Middle School - On Friday, Nock Middle School will welcome Alison Crowther for an all-school assembly. She is the mother of Welles Remy Crowther. Welles is remembered by his selfless acts of heroism on 9/11. Boston College honors Welles yearly with the “man in the red bandana” football game and the “man in the red bandana” 5K.
- The Nock students are working with their Advisors on their student led conversations. These student-led conversations are creating a forum for students to take ownership of their success and continue to build strong partnerships between school, parents and students.
- Molin School - The 4th graders visited Spencer Peirce Little Farm and participated in Dirt Detectives: Archaeology at the Farm.
The 5th graders visited the Franklin Park Zoo. The trip ties to the 5th grade writing curriculum. Students have read about how and why zoos may be good or bad. Their culminating writing project is to argue if zoos are good or bad. They will be tasked with supporting their opinion with text evidence and elaborating based on their experience.
- Bresnahan School - Last week, the 2nd grade went to the Ipswich River Wildlife Sanctuary. They learned about wildlife and comparing ecosystems, consistent with the

2nd grade curriculum. **Bruce Menin** led them on a tour. **Bruce Menin** commented that they were all well behaved.

An exciting new program started today called Clipper Courses. Our teachers are hosting free 1-hour after schools, using their contractual student-contact hour, to lead enrichment programs, open to all students K-3. The courses offer a variety of activities such as Spanish, STEM, math games, theater, typing and composting. We are also hosting targeted academic intervention groups as part of this program. Salter transportation is providing a late bus.

We are having fun with “Blue Blocks” during the month of October, generously donated to us by Newburyport Youth Services. The Blue Blocks inspire students to create their own inventions, environments and activities. It is child directed and open ended, it encourages self-expression through deep, joyful play.

MIDDLE SCHOOL OVERNIGHT TRIP - MAY 2023:

Principal Nick Markos and Nock staff presented information regarding an 8th grade overnight class trip to Philadelphia / Ellis Island on May 23 through May 25, 2023.

Motion:

On a motion by **Juliet Walker** and seconded by **Steve Cole** it was

VOTED: To approve the overnight field trip for the 8th grade class trip to Philadelphia / Ellis Island on May 23 through May 25, 2023.

Juliet Walker inquired regarding fundraising plans.

Brian Callahan suggested having something for auction which is coming up.

Sarah Hall inquired regarding assurance that every 8th grade student would attend.

Motion Passed

Mayor Reardon absent for vote

SCHOOL COMMITTEE RESOLUTION IN SUPPORT OF THE FAIR SHARE AMENDMENT:

The Fair Share Amendment is a proposal to amend the Mass. Constitution to create an additional tax of four percentage points on the portion of a person’s annual income above \$1 million. The new revenue would be for “quality public education and affordable public colleges and universities, and for the repair and maintenance of roads, bridges and public transportation.”

Motion:

On a motion by **Sarah Hall** and seconded by **Bruce Menin** it was

VOTED: To support the Fair Share Amendment.

Motion Passed

Mayor Reardon absent for vote

Sarah Hall announced that **Juliet Walker** will attend the MASC Annual meeting in Hyannis on Wednesday, November 2, 2022.

MASC RESOLUTIONS 1 - 6:

Resolution 1: Regarding Sanctuary Laws for Transgender students:

Motion:

On a motion by **Sarah Hall** and seconded by **Bruce Menin** it was

VOTED: To support Resolution 2: Regarding Sanctuary Laws for Transgender Students.

Motion Passed

Mayor Reardon absent for vote

Resolution 2: To Increase the Maximum Balance Allowed by the Special Education

Reserve Fund:

Motion:

On a motion by **Sarah Hall** and seconded by **Brian Callahan** it was

VOTED: To support Resolution 2: To Increase the Maximum Balance Allowed by The Special Education Reserve Fund

Motion Passed

Mayor Reardon absent for vote

Resolution 3: Membership of the Board of Elementary and Secondary Education:

Motion:

On a motion by **Bruce Menin** and seconded by **Steve Cole** it was

VOTED: To support Resolution 3: Membership of the Board of Elementary and Secondary Education.

Motion Passed

Brian Callahan voted NO

Mayor Reardon absent for vote

Resolution 4: Preserving Local Governance of Mass. Schools:

Motion:

On a motion **Bruce Menin** and seconded by **Sarah Hall** it was

VOTED: To support Resolution 4: Preserving Local Governance of Mass. Schools.

Motion Passed

Mayor Reardon absent for vote

Resolution 5: Personal Financial Literacy Education:

On a motion by **Sarah Hall** and seconded by **Brian Callahan** it was

VOTED: To support Resolution 5: Personal Financial Literacy Education.

Motion Passed

Mayor Reardon absent for vote

Mayor Reardon arrived to the meeting at 7:25 PM.

Resolution 6: Establishment of a Regional School Assessment Reserve Fund:

Motion:

On a motion by **Bruce Menin** and seconded by **Steve Cole** it was

VOTED: To support Resolution 6: Establishment of a Regional School Assessment Reserve Fund.

Motion Passed Unanimously

SUBCOMMITTEE UPDATES:

Finance:

Brian Callahan said they met on October 13. They made a transfer, discussed non-union issues and had an athletic fees presentation.

Juliet Walker spoke about fees

Policy:

Juliet Walker said they have not met. They will meet next Monday the 24th at 7PM and will review the trip policy.

Joint Education:

Bruce Menin said they met tonight. They had Whittier Voc. Tech on line. He stated that the City Council is moving to dissolve the Joint Education Subcommittee.

Superintendent Evaluation:

Bruce Menin said there was no update at this time.

Transportation:

Juliet Walker said they will be meeting tomorrow afternoon.

SUPERINTENDENT'S REPORT:

Superintendent Gallagher reported on the following:

- MCAS - Reports will be sent out. Dr. Abrams is working with the Leadership Team and will present an overview to the School Committee.
Juliet Walker asked that this be done in context of all assessments.
- 1.1 Device - Conversations have begun. An ad Hoc group has been developed. Work has been reviewed. They will meet this week.
- Integrated Feasibility Study Update.
School Committee Tour
4-part Process
October 19 - listening session
School tours - Pentucket / Cambridge
3-hour visioning session – Wednesday, November 16, 2022
Meeting - breakout sessions

NEW BUSINESS:

There was no new business at this time.

Sarah Hall announced there would be a ten-minute recess of the Committee.

EXECUTIVE SESSION:

Motion:

On a motion by **Sarah Hall** and seconded by **Bruce Menin** it was

VOTED: To adjourn to Executive Session at 8:00 PM pursuant to M.G.L.c.30A, Section 21(a)(1) to discuss the reputation, character, physical condition or mental health, rather than professional competence, of an individual, or to discuss the discipline or dismissal of, or complaints or charges brought against, a public officer, employee, staff member or Individual. The Committee will not be returning to Open Session.

Roll Call Vote:

Mayor Reardon	Yes
Sarah Hall	Yes
Brian Callahan	Yes
Juliet Walker	Yes
Bruce Menin	Yes
Steve Cole	Yes

Motion Passed Unanimously

Transportation Committee Report Back to Full School Committee

Contents

I.	Committee Charge and Scope	1
II.	State Requirements (Chapter 71, Section 68)	1
III.	Comparative Community Transportation Fee and Policy Review	2
IV.	Transportation Survey Summary	6
V.	DRAFT District-Wide Transportation Policy Goals.....	10
VI.	Transportation Options Reviewed	11
VII.	Transportation Budget and Fees Overview	14
VIII.	Current School Year Bus Passes by Year and Grade	19
IX.	Distribution of Students by Grade and Distance from School (for 2022/2023 SY)	20
	Bresnahan (Kindergarten)	22
	Bresnahan (Grades 1 to 3)	23
	Molin (Grades 4 and 5).....	24
	Nock (Grades 6 to 8)	25
	Newburyport High School	26
X.	Draft Transportation Policy Revisions	27
	Changes to Existing Policy	27
	New Policy – Safe Routes to School	29
XI.	Additional Survey Comments	30

I. Committee Charge and Scope

Purpose: Develop guidelines for School Committee decisions related to school transportation access, safety, funding, and fees.


Scope: Research and evaluate existing school transportation and develop recommendations for revisions to existing policies or establishment of new policies and present to School Committee in fall of 2022.

- Review school bus operations (e.g. routing, number of busses)
- Conduct parent survey to determine why students/families choose their transportation mode
- Review overall school bus transportation costs and trends
- Understand legal requirements for school bus transportation
- Review existing bus fee structure and research models from other districts
- Consider ways to improve traffic congestion and bicycle and pedestrian safety in and around our schools
- Explore collaboration opportunities with MVRTA and other City departments
- Consider opportunities for reducing school transportation costs and improving efficiencies

II. State Requirements (Chapter 71, Section 68)

- Transportation must be provided by the school for students in grades K through 6 living more than two miles from school.
- Fees may be assessed for transportation of students that live less than two miles from school.
- No student eligible for free or reduced lunch may be assessed a fee for transportation.

Section 68: Duties of towns to maintain schools; transportation of children; school building committee representation

 Print Page

< Prev

Next >

Section 68. Every town shall provide and maintain a sufficient number of schoolhouses, properly furnished and conveniently situated for the accommodation of all children therein entitled to attend the public schools. **If the distance between a child's residence and the school he is entitled to attend exceeds two miles and the nearest school bus stop is more than one mile from such residence, and the school committee declines to furnish transportation, the department, upon appeal of the parent or guardian of the child, may require the town to furnish transportation for children in grades kindergarten through six for a part or for all of the distance between said child's residence and the school.** If said distance exceeds three miles, and the distance between the child's residence and a school in an adjoining town giving substantially equivalent instruction is less than three miles, and the school committee declines to pay for tuition in such nearer school, and for transportation in case the distance thereto exceeds two miles, the department, upon like appeal, may require the town of residence to pay for tuition in such nearer school for children in grades kindergarten through six, and if necessary provide for transportation for a part or for the whole of said distance to, such nearer school for children in said grades. Nothing contained in the preceding two sentences shall be construed to limit the obligation of regional school districts to provide transportation for all school children in grades kindergarten through twelve, pursuant to the provisions in section sixteen C of this chapter. No school committee shall be compelled to furnish transportation on a private way. **In the case of transportation provided to students that is not required by this section or by any other general or special law, a school committee may assess fees to the transported student up to an amount sufficient to cover the costs incurred by the district; provided, however, that no student eligible for free or reduced lunch, under the federal school lunch program, shall be required to pay the fee; and provided further, that a school committee may choose to exempt families at other income levels as it may determine.** The school committee, unless the town otherwise directs, shall have general charge and superintendence of the schoolhouses, shall keep them in good order, and shall, at the expense of the town, procure a suitable place for the schools, if there is no schoolhouse, and provide fuel and all other things necessary for the comfort of the pupils. Each school shall comply with the requirements regarding pesticide applications as set forth in sections 6C to 6I, inclusive, of chapter 132B. Whenever a town shall undertake to provide a schoolhouse, the town shall appoint at least one member of the school committee, or its designee, to serve on the agency, board or committee to which the planning and construction or other acquisition of such schoolhouse is delegated.

III. Comparative Community Transportation Fee and Policy Review

Communities were reviewed from around the North Shore that had similar characteristics to Newburyport as well as those identified in DART (*) as comparable communities (<https://profiles.doe.mass.edu/analysis/state.aspx>). Information provided below is based on web-based research and was not confirmed with the communities listed. *Unless otherwise noted, it was assumed that all schools listed are providing free transportation for K-6 students that live 2+ miles from school (consistent with state law).*

School district	School Enrollment (2021)	Total population (2020)	Land Area	Fee per student	Family cap	Notes
NEWBURYPORT	2126	18,289	8.35	\$300	None	Free for K-12 who qualify for free / reduced lunch as well as K-6 living 2+ miles from school. \$100 for each additional student over 2.
Amesbury	1852	17,366	12.26	\$187.50	\$337.50	In spring 2021, the Amesbury School Committee voted to reduce the transportation fee by 25%.
Andover	5574	36,569	30.85	\$300	\$600	
Beverly	4633	42,670	15.09	\$315	\$630	
Chelmsford	4826	36,392	22.37	\$200	\$500	
Danvers	3309	28,087	13.28	\$180	\$540	Students Grades K-5 that live 1 mile or over from their school are bus eligible. Students in grades 6-12 living over 1.5 miles from their school are bus eligible. School provides a list of eligible streets.

School district	School Enrollment (2021)	Total population (2020)	Land Area	Fee per student	Family cap	Notes
Dracut	3659	32,617	20.63	\$150	\$600	Students living in established “walk zones” are not eligible for the bus. K-6 who live 2+ miles from school, no fee. List of streets provided on web page.
Easton*	3410	25,058	28.75	\$175 - 1st student \$150 - 2nd student \$125 - 3rd student	\$450	All students in K-2 and grades 3-5 living less than 1.5 miles from school receive free bus service. 3-12 students living 1.5+ miles are eligible based on a space available basis (for a fee). Younger grades receive priority for available space.
Foxborough*	2450	18,618	19.85	Free	Free	Appears to be free for any student K-12 living more than 1 mile from school
Georgetown	1218	8,470	12.86	free	free	School bus transportation available for students living 1.5+ miles OR the student lives in a previously established safety zone.
Gloucester	2766	29,729	26.2	\$100	\$200	Free to students K-6 living 1.5+ miles from school. Offer a one-way bus pass for \$70. Fee-based bus passes are available on a first-come, first-serve basis.
Grafton*	3121	19,664	22.81	\$200	\$400	
Ipswich*	1594	13,785	32.11	\$250	\$500	
Lynnfield*	2167	13,000	9.88	\$100	\$200	

School district	School Enrollment (2021)	Total population (2020)	Land Area	Fee per student	Family cap	Notes
Marblehead*	2704	20,441	4.39	\$250	N/A	
Medway*	2074	13,115	11.54	Free	Free	Bus eligibility: students in grades K-4 who live 1+miles from school, grades 5-12 who live 1.5+ miles from school
North Andover	4510	30,915	26.31	\$360	no cap	Students in grades K-6 who live .5+ miles from school grades are eligible for bus service
North Reading	2309	15,554	13.14	\$400	\$650	
Peabody	5776	54,481	16.21	\$225 one-way \$325 round trip	\$450 one-way \$650 round trip	Transportation provided to K-6. For grades 7-12 transportation is available subject to available seating
Salem	3734	44,480	8.28	\$250 - round trip \$150 - one way	\$400	Free for K-2 students who live 1+ miles from school, 3-5 who live 1.5+ miles from school, grade 6 who live 2+ miles from school. Fee for passes (based on space availability) for Grades 3-5 who live between 1 mile and 1.5 miles away from school, Grades 6 who live 1 to 2 miles away from school, Grades 7-12 who live over 1 mile away from school. Other students are not eligible to ride the bus.
Seekonk*	2047	15,531	18.37	Waived for 2022-2023 school year		Transportation provided for K-6. All 7-12 students living 2+ miles from school will be provided transportation on a first come first served basis for available seats on the bus (may be charged a fee).

School district	School Enrollment (2021)	Total population (2020)	Land Area	Fee per student	Family cap	Notes
Westford	4714	24,643	30.27	\$350 for one student, \$700 for two students, \$850 for 3 or more	\$850	

IV. Transportation Survey Summary

Distributed September 2022

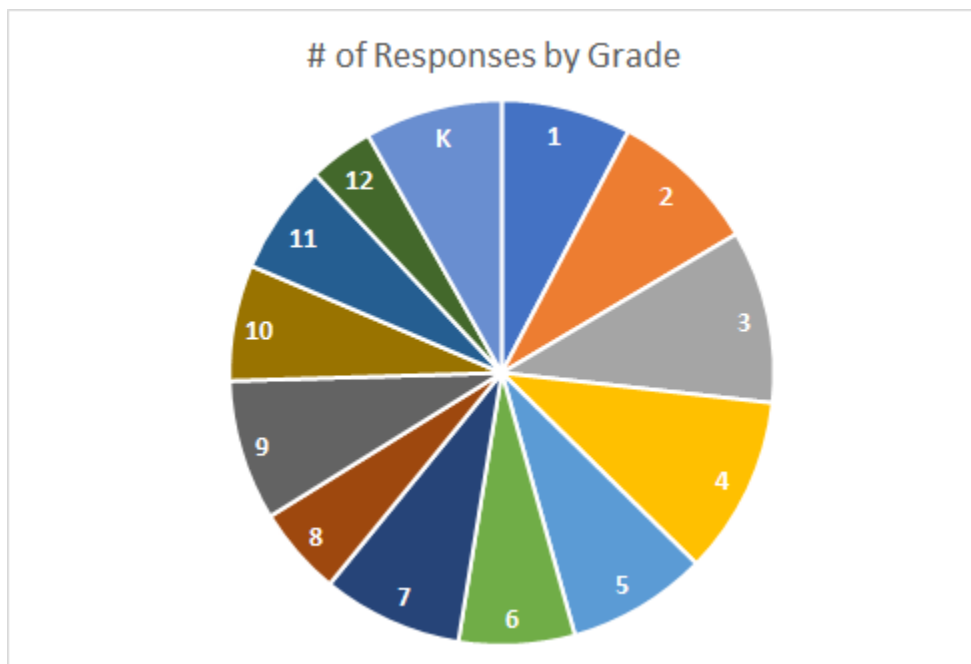
Total Responses = 624 (Newburyport), 26 (Other Towns)

Summary below only includes responses from Newburyport families

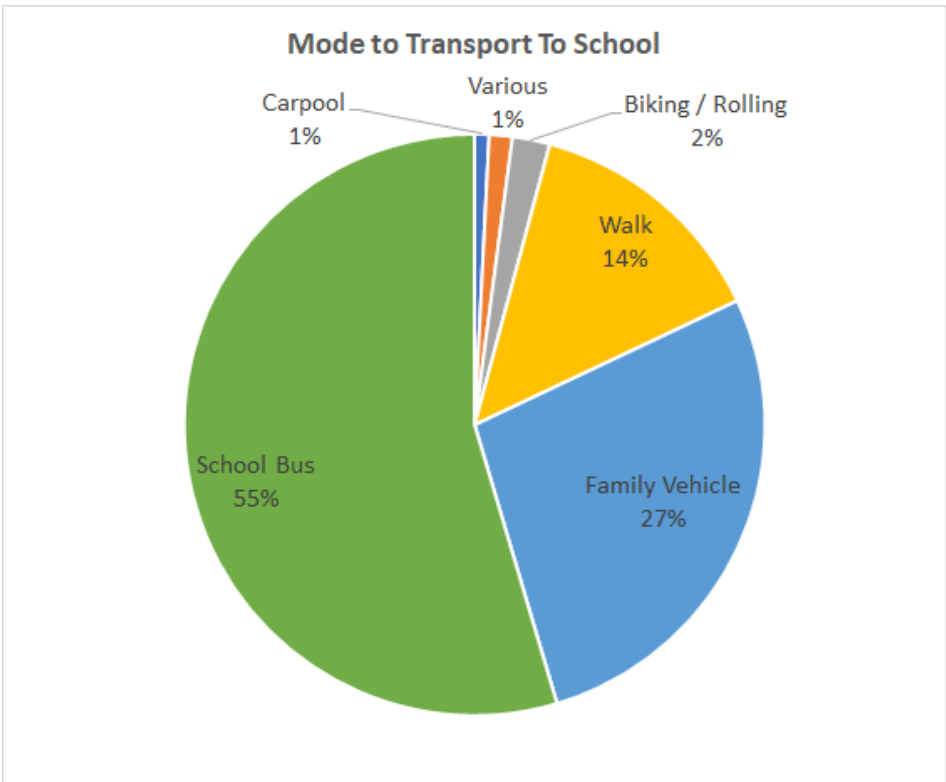
Address Distribution



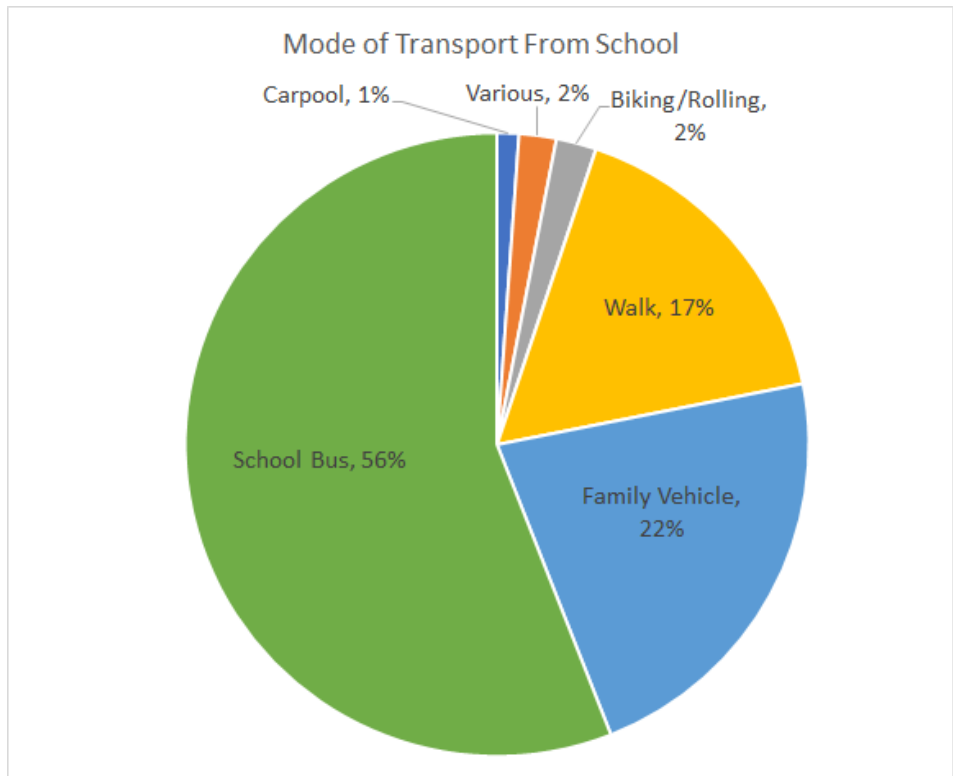
K	51
1	48
2	55
3	64
4	66
5	52
6	43
7	52
8	33
9	52
10	43
11	41
12	24

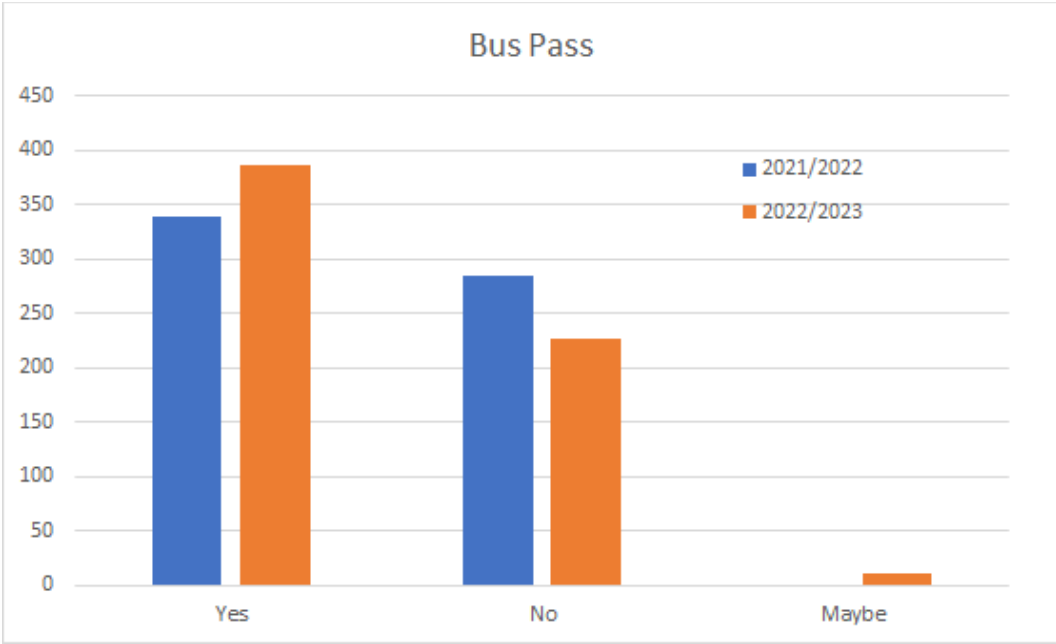


Carpool	5
Various	8
Biking / Rolling	13
Walk	86
Family Vehicle	171
School Bus	340



Carpool	7
Various	12
Biking/Rolling	13
Walk	104
Family Vehicle	138
School Bus	348





# of vehicles in Household (619 responses)	
0	18*
1	102**
2	411
3+	88

* All zero-car households plan to have a bus pass

** 80 of the single car households plan to have a bus pass

Reasons for Not Taking the Bus	
Live close to the school and prefer to walk or bike	105
Bus fee is too expensive	66
Bus takes too long to get to or from school	32
Safety concerns	25
All of the above	1
Other	51

Other reasons listed:

- Anxiety
- Bad experience with bus company
- Bus stop too far from home
- Child's preference
- Convenience / easier to drive
- Drive by on way to and from work
- Student has car or access to sibling car
- Participates in sports or after school activity
- Parents' preference
- My child had to transport a large instrument to school most days.
- Stigma of riding bus
- Too long and not close and too expensive
- Child is too young

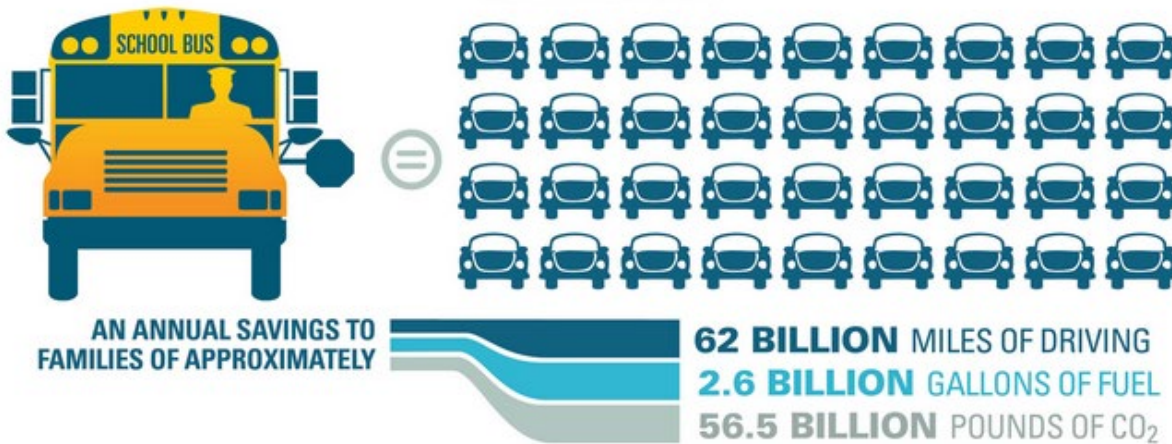
See Section XI of this report for additional comments submitted.

V. DRAFT District-Wide Transportation Policy Goals

- Provide for safe and reliable transportation of students to and from schools
- Reduce financial burdens on families and district
- Reduce district transportation costs
- Reduce carbon emissions

ONE SCHOOL BUS CARRIES THE EQUIVALENT OF **36 CARS**

AMERICAN SCHOOL BUS COUNCIL



VI. Transportation Options Reviewed

These are the different options discussed by the committee. These are not mutually exclusive and some could be applied in combination with each other. The final column lists additional information to consider, some of which is are provided in this packet.

Option	Pros	Cons	Additional Information to consider	Requires Policy Change	Requires SC Vote
No change to bus fee			<ul style="list-style-type: none"> Projected revenue Total operating expenses 	No	Yes
Increase bus fee to \$365	<ul style="list-style-type: none"> Potential increase in revenue to off-set costs 	<ul style="list-style-type: none"> May reduce overall ridership (and revenue) Increased financial burden to families 	<ul style="list-style-type: none"> Projected revenue 	No	Yes
Reduce or eliminate bus fee	<ul style="list-style-type: none"> Reduce financial burden on families Could encourage increased bus use and decrease congestion around schools 	<ul style="list-style-type: none"> Reduced revenue to support operating expenses 	<ul style="list-style-type: none"> Impact on budget 	No	Yes
Restrict eligibility for bus based on distance from school (e.g. less than ½ miles)	<ul style="list-style-type: none"> Potential reduction in bus demand (and associated cost savings) 	<ul style="list-style-type: none"> Reduced revenue from bus passes Will likely increase traffic congestion around schools 	<ul style="list-style-type: none"> Number of students by grade and distance from school Projected demand for busses based on # of riders 	Yes	Yes

Option	Pros	Cons	Additional Information to consider	Requires Policy Change	Requires SC Vote
Limit grades eligible for bus to K-8 only	<ul style="list-style-type: none"> • Potential reduction in bus demand (and associated cost savings) 	<ul style="list-style-type: none"> • Reduced revenue from bus passes • Will likely increase traffic congestion around schools • Limits options for students in grades 8+ 	<ul style="list-style-type: none"> • Number of students in each grade • Projected impact on bus demand based on # of riders • Projected revenue 	Yes	Yes
Offer one-way bus pass option (e.g. \$150)	<ul style="list-style-type: none"> • May increase bus revenue • Increase options for families • Potential reduction in traffic congestion around schools 	<ul style="list-style-type: none"> • May decrease bus revenue 		No	Yes
Offer morning bus only for NHS	<ul style="list-style-type: none"> • Potential reduction in bus demand (and associated cost savings) 			No	No
Encourage more walking and biking to school	<ul style="list-style-type: none"> • Reduce traffic congestion around schools 		Adopt SRTS Policy, add SRTS programming in the schools	Yes	Yes

Option	Pros	Cons	Additional Information to consider	Requires Policy Change	Requires SC Vote
Promote use of MVRTA	<ul style="list-style-type: none"> • Increases options for students and families • Potential reduction in traffic congestion around schools 			No	No
Offer monthly payment plan	Reduced financial burden on parents by spreading out payments			No	No
Improve routing efficiencies to reduce # of busses and overall operating expenses	Reduce bus costs			No	No

VII. Transportation Budget and Fees Overview



Newburyport Public Schools

Office of the Superintendent

70 Low Street, Newburyport, Massachusetts 01950-4087

Memo

To: Transportation Advisory Committee

From: Phil Littlehale, Business Manager

Subject: FY23 Transportation Budget

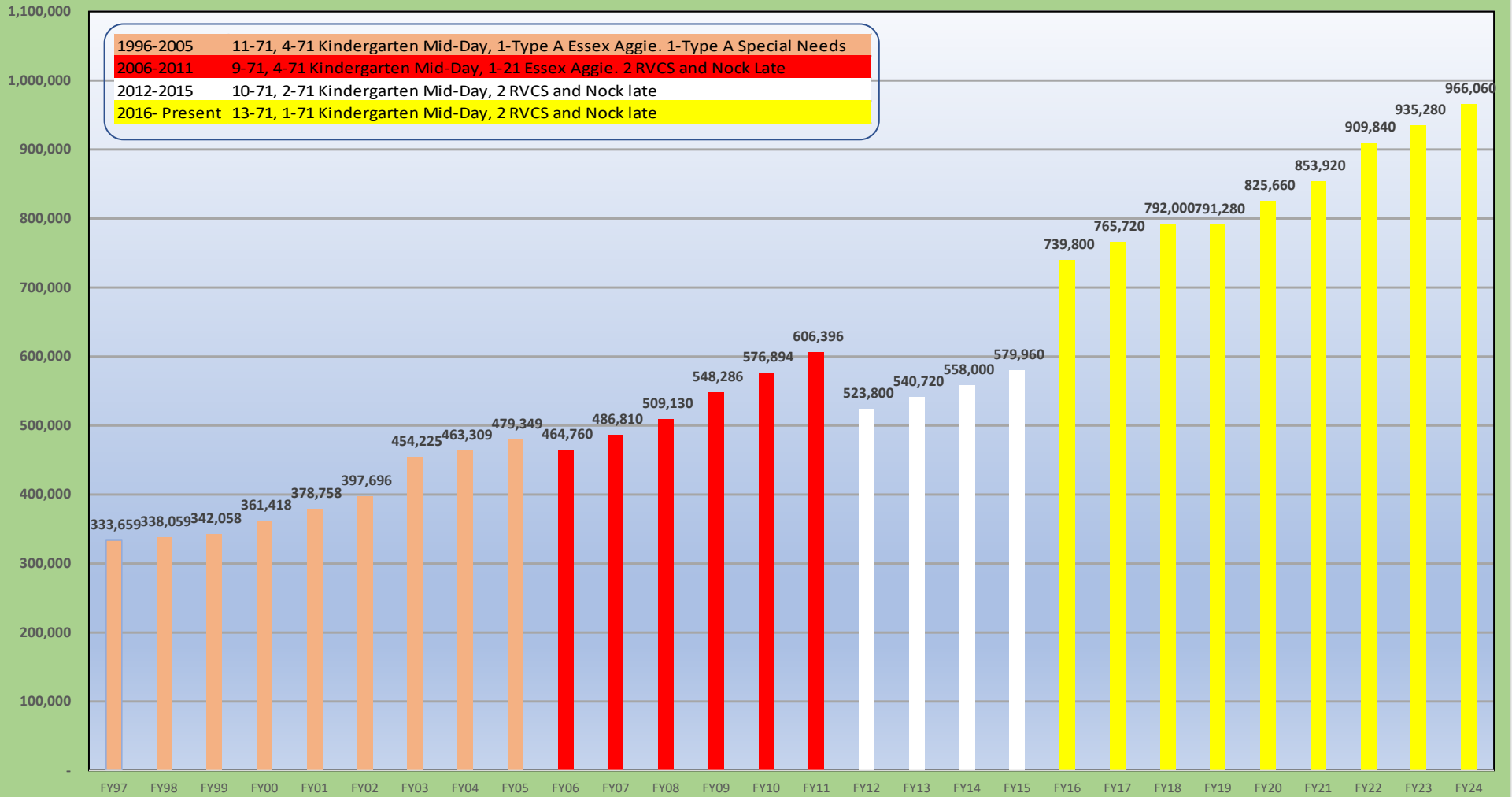
Date: October 18, 2022

This schedule shows the FY23 Transportation Budget for the Regular and Special Education.

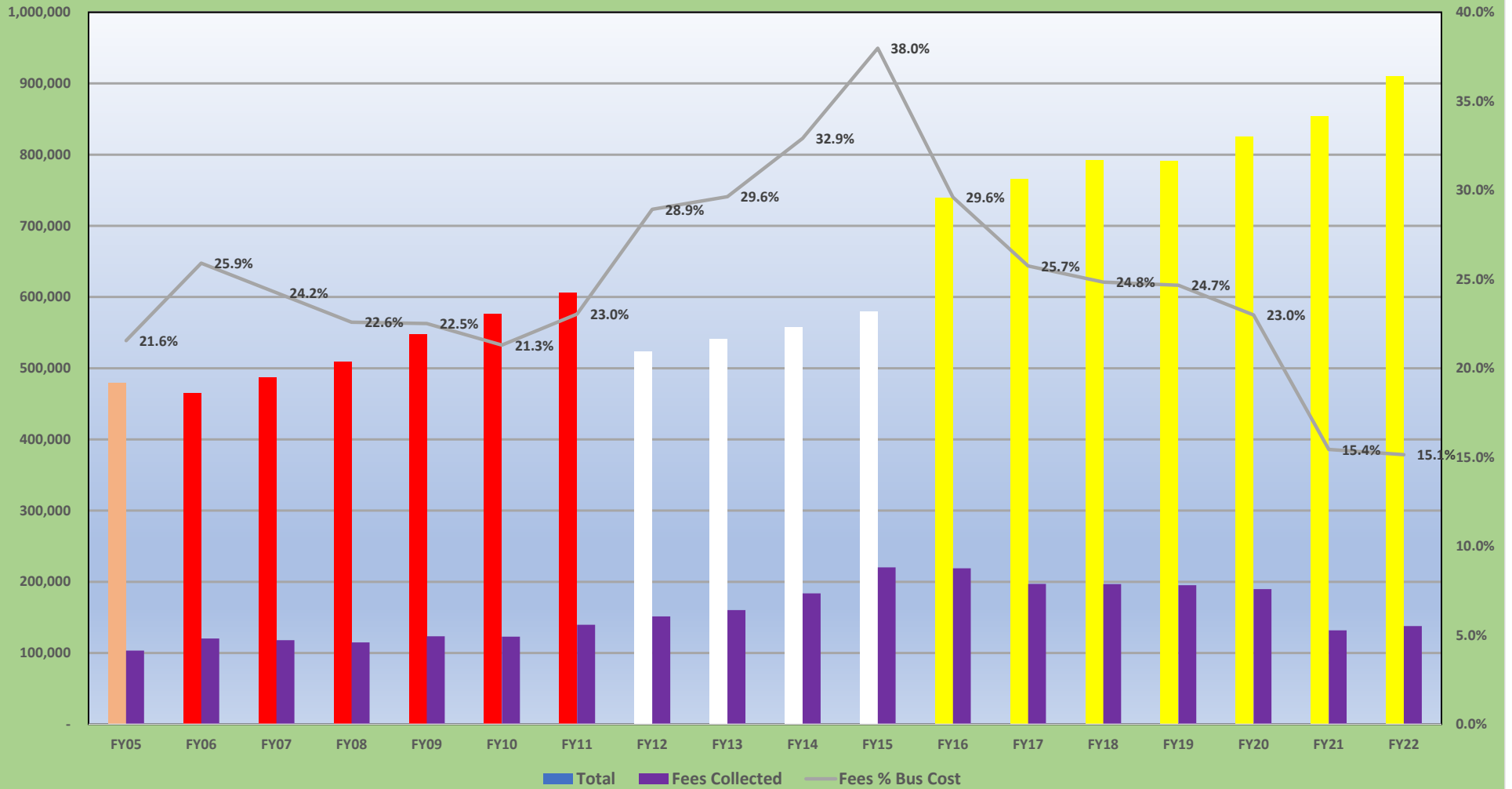
Per/Non	Description	Grade/Program	Total
Revenue	School Bus Fees	Transportation	180,000
	School Bus Fees Total		180,000
Revenue Total			180,000
Expenses	Transportation	Special Education	663,986
		Transportation	1,090,000
	Transportation Total		1,753,986
Expenses Total			1,753,986

Thank You.

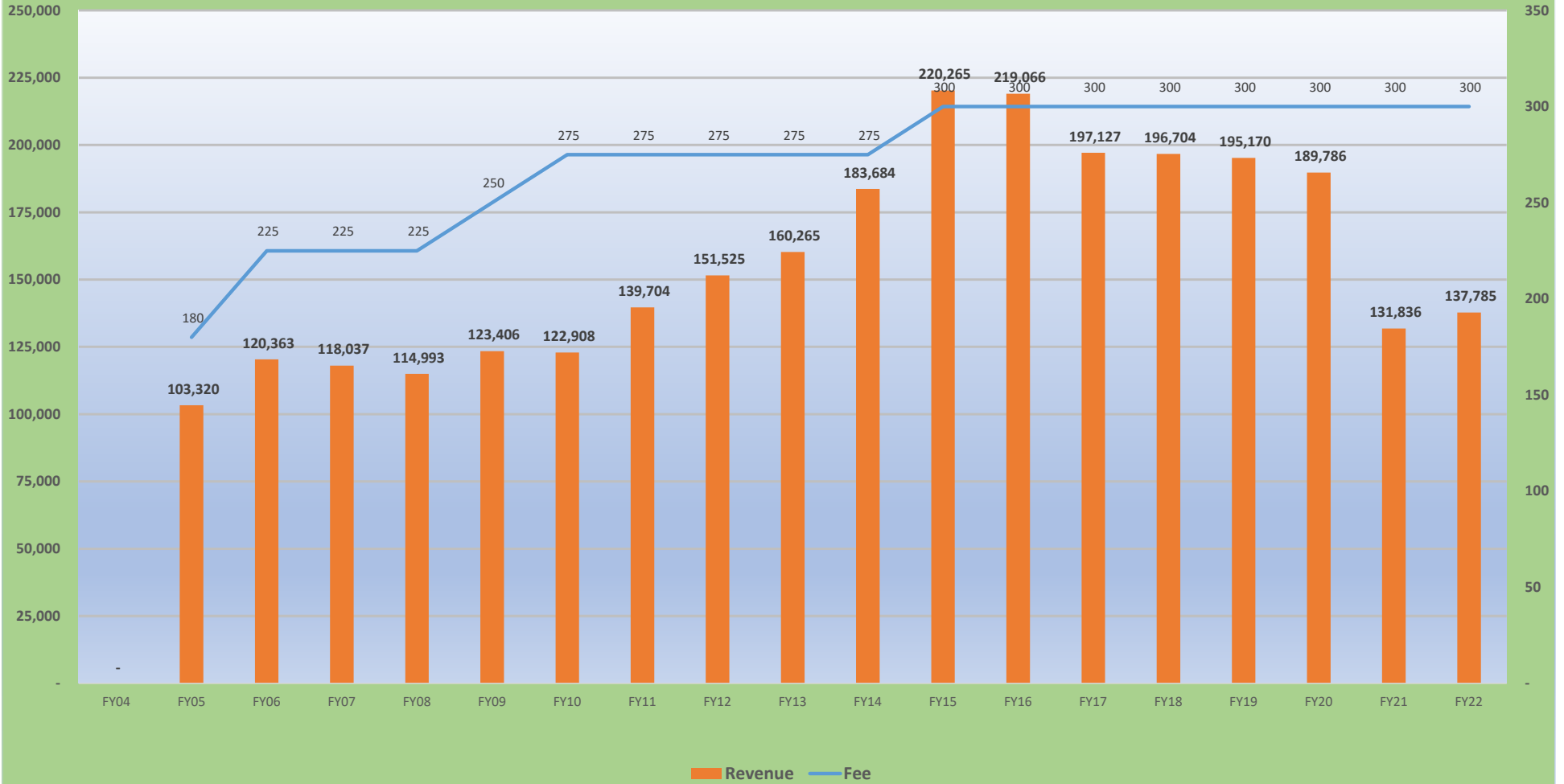
Transportation Costs



Transportation Costs



Transportation Fees



VIII. Current School Year Bus Passes by Year and Grade

Three Groups of Riders

Do Not Pay

1. Those who are eligible by state law: grades K-6 and live more than 2 miles from school. This year there are 315 riders. See row 3 in the table.
2. Those who are eligible by School Committee policy. This year there are 170 riders. See row 2 in the table.

Pay

3. Those who are not eligible; neither by law nor policy. This year there are 516 riders. See row 1 in the table.

Eligible for Bus By Law?	Eligible for Bus By Policy?	Pay	K	1	2	3	4	5	6	7	8	9	10	11	12	Grand Total
Not Eligible	Not Eligible	Yes	40	34	40	44	38	24	27	72	72	47	44	21	13	516
Not Eligible	Policy	No	10	15	13	8	15	12	15	14	17	14	19	10	8	170
Yes	Not Eligible	No	16	47	41	59	43	56	53							315
Grand Total			66	96	94	111	96	92	95	86	89	61	63	31	21	1,001

IX. Distribution of Students by Grade and Distance from School (for 2022/2023 SY)

Kindergarten (Bresnahan)

Distance (miles)	Number of Students
0.5 or less	19
0.5 to 1	41
1 to 1.5	24
1.5 to 2	18
2+	3
Total	105

Grades 1 to 3 (Bresnahan)

Distance (miles)	All Students	Grade 1	Grade 2	Grade 3
0.5 or less	80	24	25	31
0.5 to 1	152	42	56	54
1 to 1.5	75	22	24	29
1.5 to 2	83	28	22	33
2+	27	8	10	9
Total	417			

Grades 4 and 5 (Molin)

Distance (miles)	All Students	Grade 4	Grade 5
0.5 or less	26	17	9
0.5 to 1	64	37	27
1 to 1.5	88	45	43
1.5 to 2	80	39	41
2+	17	6	11
Total	275		

Grades 6 to 8 (Nock)

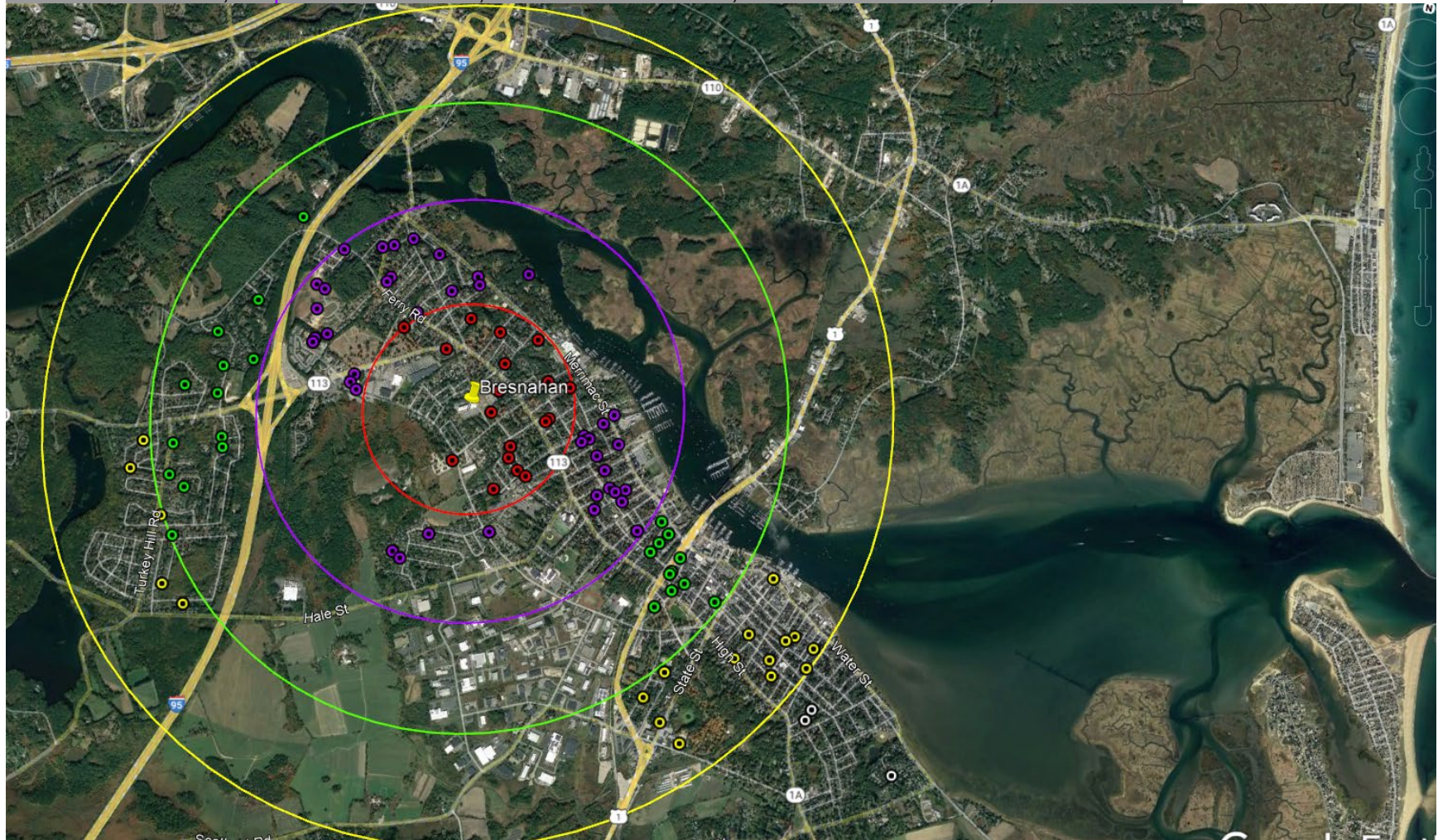
Distance (miles)	All Students	Grade 6	Grade 7	Grade 8
0.5 or less	58	19	19	20
0.5 to 1	126	41	47	38
1 to 1.5	111	30	32	49
1.5 to 2	140	55	45	40
2+	22	10	5	7
Total	457			

Grades 9 to 12 (NHS)

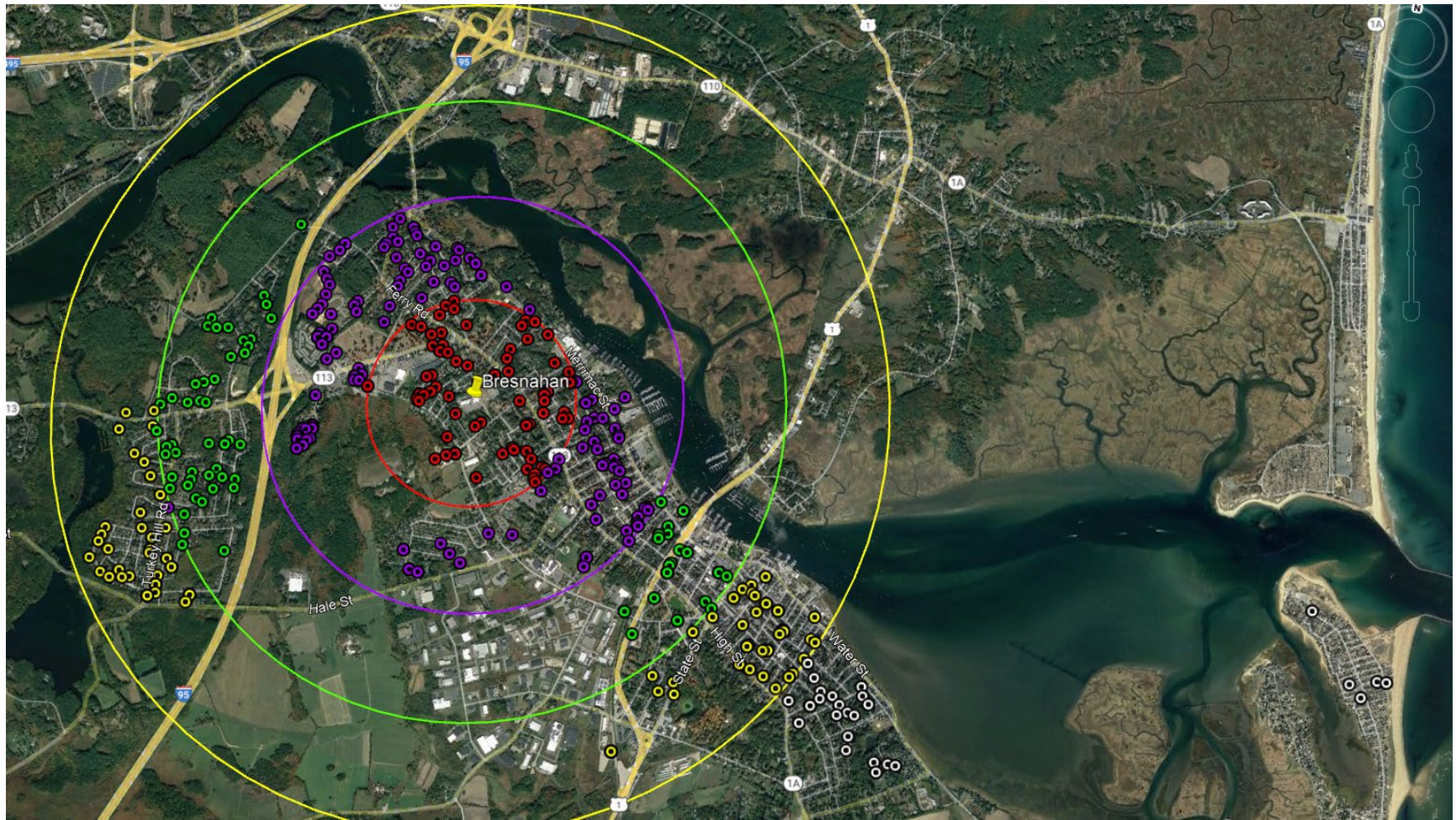
Distance (miles)	All Students	Grade 9	Grade 10	Grade 11	Grade 12
0.5 or less	219	51	48	65	55
0.5 to 1	205	42	66	44	53
1 to 1.5	152	41	34	37	40
1.5 to 2	185	48	32	51	54
2+	51	12	12	14	13
Total	812				

Bresnahan (Kindergarten)

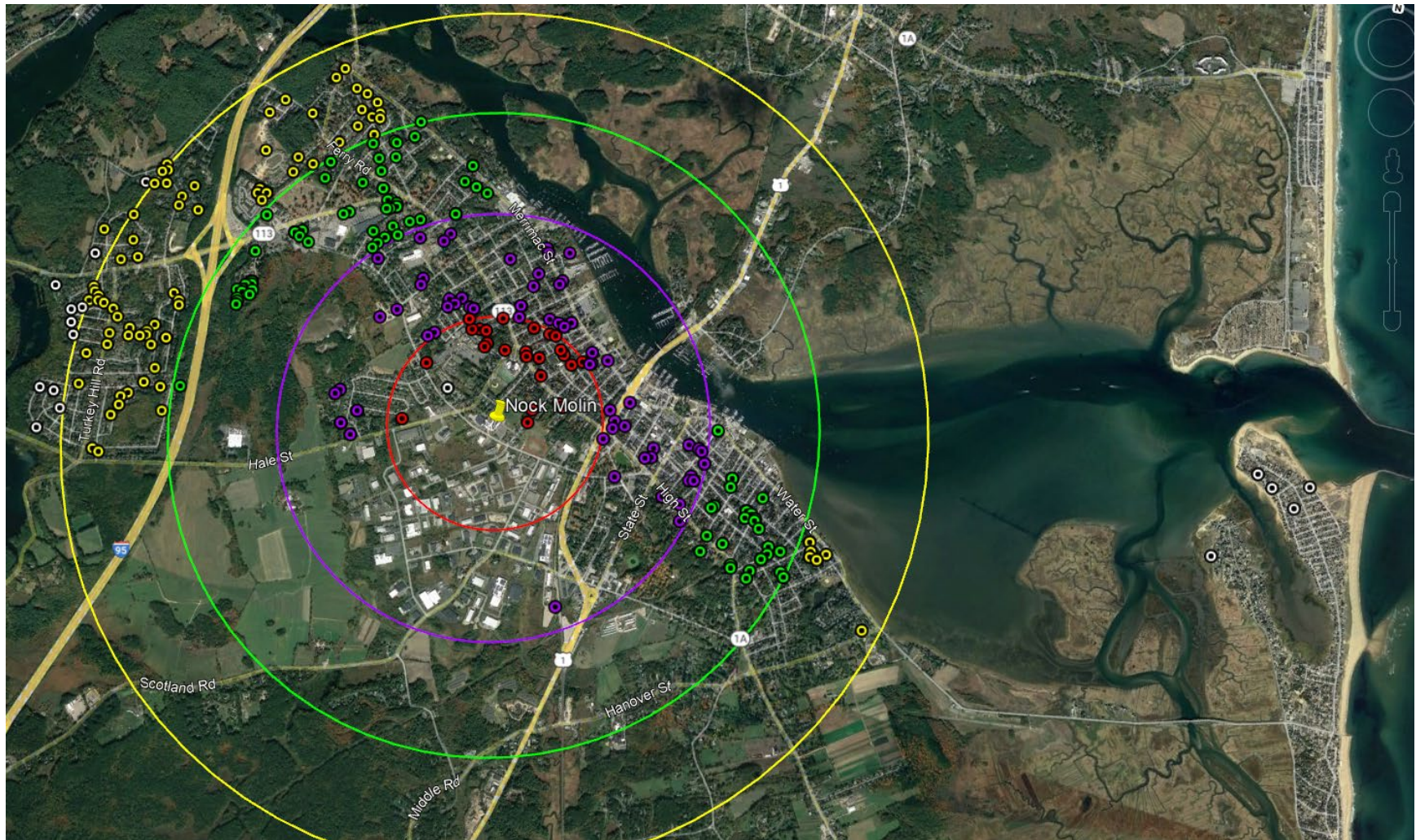
Red = 0 to 0.5 miles, Purple = 0.5 to 1 miles, Green = 1 to 1.5 miles, Yellow = 1.5 to 2 miles, White = 2+ miles



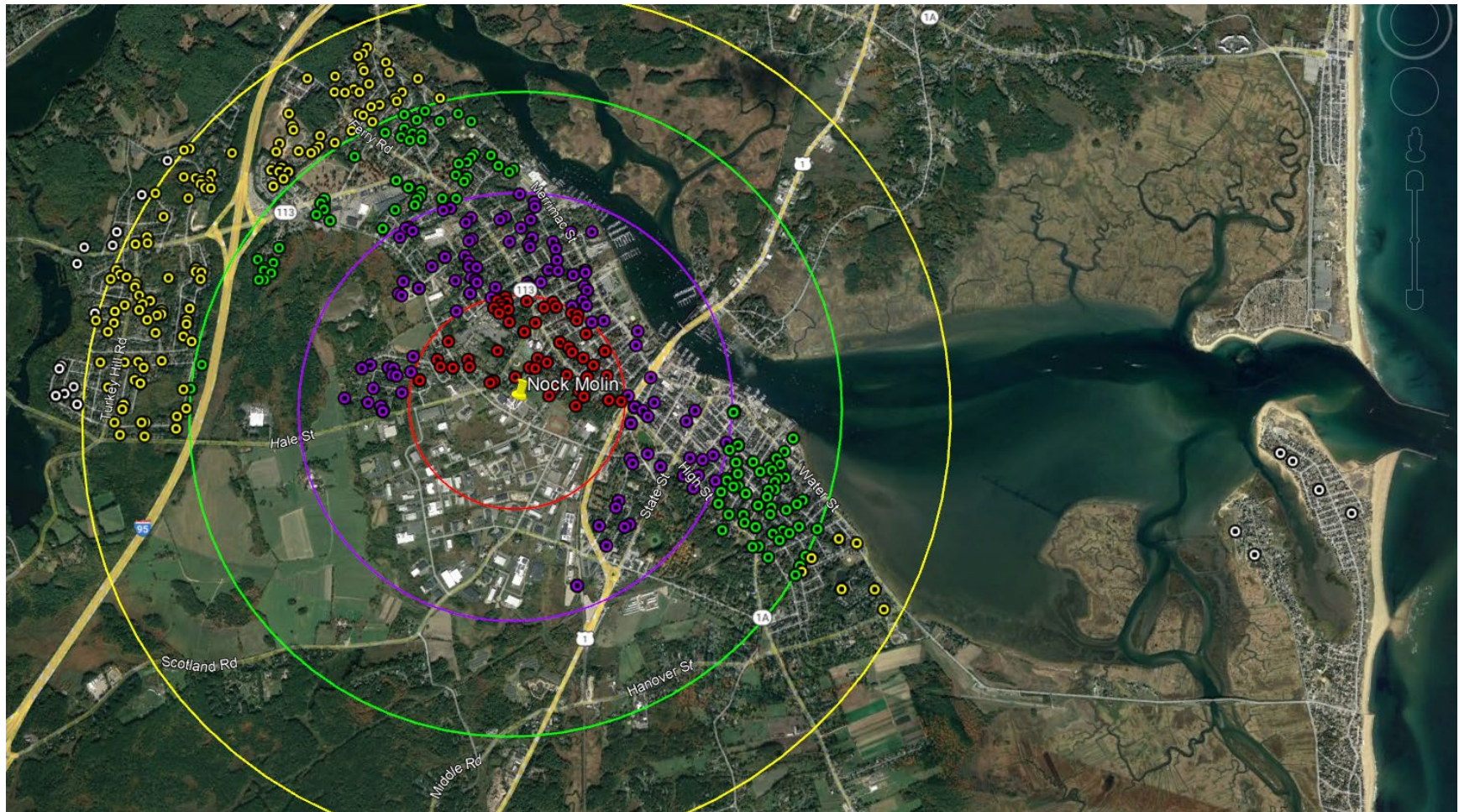
Bresnahan (Grades 1 to 3)



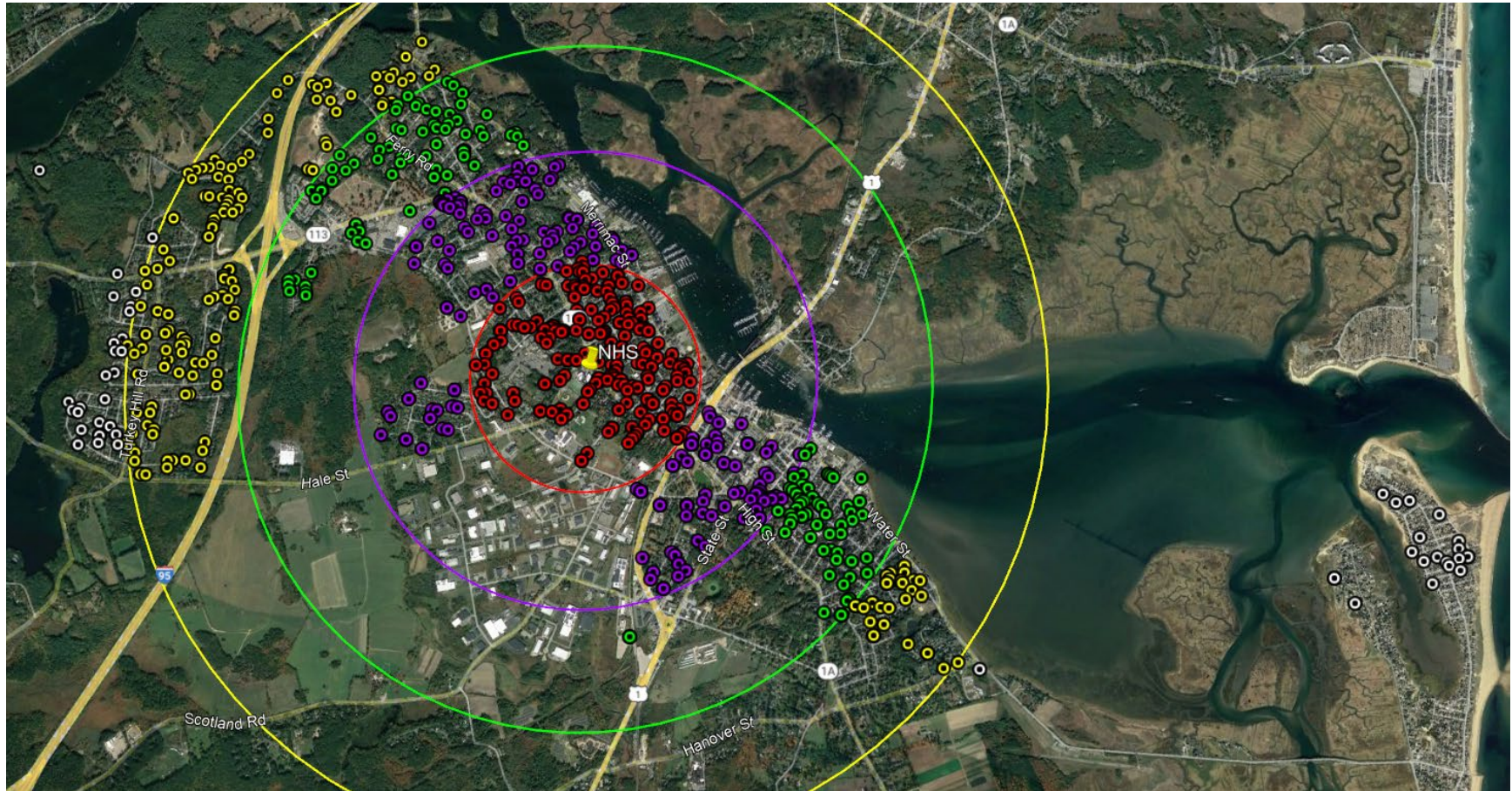
Molin (Grades 4 and 5)



Nock (Grades 6 to 8)



Newburyport High School



X. Draft Transportation Policy Revisions

Changes to Existing Policy

WALKERS and RIDERS (POLICY EEAA)

Students will be entitled to transportation to and from school at the expense of the public schools when such transportation conforms to applicable provisions of the Massachusetts General Laws.

Newburyport Schools will provide free transportation for students as follows:

~~Students eligible for mandated (Free) transportation including the following:~~

- All students in Kindergarten through grade 6 that live 2.5 or more miles from school
- ~~All students who are eligible qualify for free or reduced lunch~~
- Students with special needs for whom transportation must be provided

Commented [1]: MASC "for students with special needs whose IEP require it"

~~Additionally, Any-the following other~~ students are eligible for bus ridership by paying the transportation fees set each year by the School Committee as follows:

- All students in Kindergarten
- Students in Grades 1 - 6 living between 0.5 and 1.5 miles from school
- Students in Grades 7 - 12 living more than 1 mile from school
- ~~through grade 6 that live 2.0 Miles and under from school~~
- All students in grades 7-12

Commented [2]: This would mean any student in grades 1 to 6 living less than 0.5 miles from school and students in grades 7-12 living less than 1 mile from school would not be eligible to ride the bus (free or for fee).

Students who are eligible for free or reduced lunch shall not be required to pay a fee.

Exceptions to these guidelines may be made at the discretion of the Superintendent. This will apply particularly to any student who must travel in a hazardous area to and from school.

The School Committee requires that all students who will be using school transportation, regardless of pay-status, ~~to~~ register for transportation and receive their bus pass.

Commented [3]: Consider re-wording, this could be clearer.

As a school district we encourage students to use alternative transportation (walking and biking) and support Safe Routes to School Initiative

Commented [4]: See alternative text provided

New Policy – Safe Routes to School

<https://www.mass.gov/info-details/safe-routes-to-school-equity#school-wellness-policy-%E2%80%93-amended-active-transportation-language->

The goal is to promote the benefits of safe walking and biking to and from school as well as to decrease parent congestion and idling.

1. The XXX Public School District will strive to accommodate all students, parents/guardians, and school staff by creating active transportation opportunities. It is the desire of the XXX Public School District to encourage principles that contribute to the safety, health, and quality of life of students by providing greater opportunities for pedestrian and bicycle trips, including the availability of bike racks, and via formal participation in the Massachusetts Department of Transportation's Safe Routes to School program including but not limited to safety/Teacher training and ongoing walking/biking event participation.
2. The XXX School District supports walking, bicycling, and other forms of active transportation to and from school and encourages efforts to minimize driving and idling when possible. The District will provide all students and teachers with pedestrian and bicycle safety education on active transportation skills and other program elements of the Massachusetts Department of Transportation's Safe Routes to School program.
3. The XXX Public School District will strive to support safe walking and biking to and from school and to decrease parent congestion and idling through the Massachusetts Department of Transportation's Safe Routes to School program elements of education, encouragement, engagement, engineering, and evaluation.
4. Facilities and Resources:
 - District will provide storage facilities for bicycles, scooters, and other active transportation devices.
 - Bike racks are available at all schools encouraging students to bike to school. School-wide physical activity initiatives are encouraged.
 - Establish a Safe Routes to School Task Force that meets regularly to promote walking/biking to and from school and address community infrastructure issues.
 - Publish arrival and dismissal plans on school websites and handbooks.

XI. Additional Survey Comments

\$300 per student is simply too expensive.
A bus tracker app for our phone would be helpful to keep us on schedule and not standing at the bus stop for long periods of time
Although we live less than a mile from Bresnahan. Our son wants to take the bus (exciting & independence for him) so we pay. Thank you
an option a) 1 way (just am) or 2)for students in atheletics/activites after school to get them home (really just paying for 1 way with athletes in the sports seasons)
Because there has not been a crossing guard at our intersection we would like to at least have a plastic indicator alerting drivers of pedestrians
Between Covid concerns (masks were not enforced on the bus) and other kidsâ€™ misbehavior that made our child uncomfortable, we opted to drop-off/pick-up at school for a good part of the year. Realizing that staffing is an issue, in an ideal world there would be a chaperone on the bus to help monitor behavior and ensure kids (especially the K riders) get off at the correct stops and a parent/caretaker is at the stop to meet them after school. Passes were never checked last year despite us being told theyâ€™d be required to get the child off the bus.
Between the cost of housing in NBPT, gas prices, and overall inflation, \$300 per child is just not affordable, even for us middle class people. Both adults work and leave early in the morning. We have no other choice.
Bus driver Joe was the best driver! He drove last year and we loved how wonderful he was with the kids!
Bus is too expensive
Bus number 7
Bus transportation is expensive
Bus transportation options are critical for working parents
Bus transportation should be free, regardless of distance to school.
Buses are an important part of school
Caitlin (not sure of spelling) is great!! I wish the ride was a bit shorter as the long ride makes it impossible to rely on the bus on days where there is extracurricular activities.
Can we have more information about the bus?
Can't believe we have to pay for busing.

Charge everyone the same instead of charging so much to just people who live closer
Child was driven to pre-K last year as there was no bus. She will need to take the bus now that she is in Kindergarten.
Concerned about cars passing stopped bus. Had a couple close calls in the last couple years.
Despite the addition of a blinking crosswalk at the High Street school entrance last year, we still had many close calls with speeding cars and distracted drivers. The school needs more crossing guards and needs to make their pay more appealing, aka hazard pay for working on High Street
Don't the Plum Island Newburyport High School bus driver is the BEST! Always on time, friendly and an all around nice guy.
Drivers need to adhere to the published schedule - it has caused many mixups in my home!
Drop off/ pick up procedure at the bus needs major revamping
Drop-off (and to some extent, parking) at Bresnahan can be a challenge - perhaps this is being looked at? I worry about speeders, small children, and tight curves.
every time we pay the expensive bus fee we only end up using it a short time for various reasons
Expensive. Would like passed for friends to come home or child to go with a friend. This can be helpful for childcare purposes.
Fees for buses should be re-evaluated. Why do you have to pay if less than 2 miles from school? We live all the way down Hale street which is not at all safe for kids to walk along. Even if it was safe, it's unrealistic to expect a 5 year old to walk 2 miles. I could see maybe having to pay if you lived within 0.5 miles but really everyone or no one should have to pay. Also, the safety of walking down Hale st doesn't change just bc you are in 6th grade so that also should not be a determining factor for paying either.
Free bus due to IEP
Free busing
FYI our household has one licensed driver who works very early in the morning and late in the afternoon. As the only other parent in the household unfortunately I have a disability and do not drive. That is why my son has to take the bus.
Have only received bus pass for one of my 2 children.
Have only received bus pass for this child. Still waiting on one for 4th grader

I didn't know there was such a thing as a bus fee before coming to Newburyport. I grew up in Seabrook and the bus was always free no matter how close or far you live from the school. Walking or biking to school isn't an option for my children because of the dangerous intersection near our house by 7/11, CVS, and Dunks. I wish I could afford to have them both take the bus but I can't and we don't qualify for free transportation.
I do not think we have seen the paper to sign Parker up for the bus - but we need to get her on it!
I have 2 children taking the bus
I have 2 kids, live within walking but Merrimac too busy so is High street-hence why I pay for the BUS for my youngest.my oldest walks. (junior)
I have two kids on the bus and its very expensive for two kids, but as a working parent gives more flexibility.
I registered my daughter for school in early august but haven't heard anything about the bus yet.
I think an exception to the bus fee should be made for those living on the other side of 95. There is no way to walk safely to/from the schools, as there is no sidewalk that runs the length of Hale St.
I think siblings should be able to sit together on the bus, also kids should be able to read or write in a notebook or have some activity
I truly believe I if we pay for bussing then there needs to be more stops.
I wish it were free. It would be nice to have the options to use the bus here and there, as needed, but I don't want to pay the fee and feel I'm not getting my money's worth if we don't use it daily.
I wish the sidewalks were better so we could bike more
I wish there was a bike path at the school
I wish there were an option of before and after-school care for younger students (grades 4 & 5). I'm a single-parent who works full time, and it's really challenging when the school hours don't line up with my work hours; it's tricky to patch together childcare, and I don't like the idea of my daughter being home alone each afternoon. Is there any way the Y program can extend to 4th and 5th grade like it used to?
I wish we had bus monitors.
I would like more transparency into how the bus is funded. If it is through our taxes I believe all children regardless of distance to school should be provided a bus pass. It doesn't seem fair that some have to pay and others do not.
I would like to see bus transportation included for families that live one mile or less away from school since it's not realistic for us to walk to school every day especially when parents have to get to work early in the morning.

I would love a crossing guard in the south end. The closest one is not near us at all and there is a big push to have kids walk to and from school. We pay for the bus bc of our proximity but the reality is my 9 year old cannot walk to school without at least one crossing guard someplace. Vehicles barely stop at crosswalks with a light downtown. Please shareâ€¦.Iâ€™d love to chat more about this.
It puzzles me that even though we are beyond 2 miles we have to pay starting in middle school before the children are of driving age.
It should be free
It should be free.
It should be free.
It takes 45 minutes to get home from school. We live a mile away.
It would be helpful if bus stops were closer to home
It would be nice if families had options to choose a.m. and/or PM bus passes when some members of the house arenâ€™t able to take transportation(younger PreK students). It is an expensive pass for only needing it for one way transportation.
It would be nice if the bus fare was free for us too - we paid the \$325 for this year â€” weâ€™re only a mile from school but there are busy streets between here and there and itâ€™s not realistic for a kindergartner to walk 2 miles round trip in addition to a full school day in my opinion.
Itâ€™s very expensive for a bus pass and I have 2 kids. If it was reasonable I will buy a pass
Kent to Bresnahan is far too far a walk to consider any student a walker. You are forcing parents to drive if they can't pay the exorbitant bus fee. This not only limits our employment options/child care options, it also created extreme congestion on the street during pickup and drop off. It's a critical failure on all levels. It's time to change how walkers are determined using a realistic metric.
Love the bus!
Luckily we now live far enough from the school to not have to pay the \$300 fee, but will only last for 2 years. The bus is so expensive and we do pay a lot in taxes.
Make it free for all students
Make the bus free for everybody
Morin Road and Richardson Path have more and more high school students every year. The NHS bus needs to have a stop down in this neighborhood. Thanks!
Multiple complaints of kids bullying on buses and from bus windows to walkers.
My 8th grader and my 5th grader also take the bus to and from school.

My child is in pre k-there was no pre k option on the survey
My child only rides the bus because we qualify for the low income. Iâ€™m not if every family knows they can ask or that there are programs for lower income families.
My child used the NYS bus afterschool frequently, so is not always on the bus home.
My child will have to spend 40 minutes on the bus in the morning AND 40 minutes in the afternoon. It seems like an awful long time for her to be on the bus. It doesnâ€™t seem fair for her to have to travel to Plum Island twice each day to get to school and get home.
My daughters walk to school periodically and sometimes bike. I am so pleased with the new crosswalk lights at the schools. They make it so much safer.
My kids bused when they were little to bres
My kids love the bus. They have made friends and I love the safety and convenience. Iâ€™m happy to pay the fee. It is money well spent for our family
My kids loved riding the bus when they were younger. Salter always has had really good drivers. Kelly Bennett is a rock star as was Jessica Wright.
My son has crohns disease and extensive walking can stimulate episodes/stomach pains!
n/a
N/A
Older students can walk, but K-3 cannot walk by themselves. The town should offer bussing to all students in these grades.
Our child must take the bus (even though we live less than 2 miles from the school) as we have two other children (3 and 1 year) to get to daycare and both work.
Pickup locations on Merrimac St. are dangerous
Provide seatbelts
Put cameras with signs so kids know they are watched. Put monitoring person regularly so you can see who are not following the rules and give a sense of safety and open communication. Put anti bullying signs The bus drivers are not heroes, they just see in their mirror and or hear what kids could lie about. Don't put older kids from other school with elementary kids (Bresnahan up to 8yo with charter 12 yo) . Bullying is mostly on the bus. Please please make a better effort to inform and prevent it.
Really need assistance with transportation
Revisit bus company. Used them before and they are not responsive or attentive.

Riding the bus is my daughters' favorite part of the day! Thank you for making it a safe and enjoyable experience for them.
Should be able to submit application online
Should offer an incentive for high school students to take the bus versus driving & parking their vehicles at the high school for cost and environmental reasons. If there already is a program to encourage this I would like to know more about it.
Should stop charging people who live within a certain distance to subsidize free bus for people who live a little further
Sometimes itâ€™s difficult when the bus isnâ€™t consistently at the same time. Thatâ€™s the only problem weâ€™ve had but otherwise itâ€™s been good.
Stops closer to home pre pandemic
Thank you for transporting this child to school
Thanks for transporting this child
The 2 miles should be measured via walking not a straight line through peoples houses.
The amount of vehicles is of interest why? What I would ideally like is for my son to be able to ride his bike to school (and our whole Family to be able to ride all around town). Sadly, in this â€œenlightenedâ€ townâ€™s quest to save the planet we have no real bicycle infrastructure that would make this safe for him. In fact, we donâ€™t even have a sidewalk out here so walking is even out of the question. At least on the bus he is reducing his carbon footprint.
The Bromfield bus route is much closer to our home than the Federal bus route given our location on Milk.
The bus drivers are great!
The bus drivers are wonderful!
The bus drivers have a lot of responsibility for road safety and passenger behavior. It would be great to split into 2 roles: a driver and a chaperone. I'd pay more for the additional oversight, although I am sure that sentiment is not shared across the public.
The bus fee is expensive, especially since our son will probably be getting his license during this school year and won't be riding the bus for the entire year.
The bus fee is ridiculously expensive per child, and given what we pay in taxes, more of this fee should be absorbed by the town.
The bus has been 15-20 mins late everyday since school started.

The bus has been late EVERY day so far. By close to 10 minutes. Surprised there were no direct questions on what we thought of the bus service.
The Bus is very expensive - luckily only one child that takes the bus and free the next two years. I think it's unfair that everyone pays after 6th grade.
The bus pass fee is insane to have to pay yearly! Especially for single parent households it is one more thing we have to stress about
The Bus route is confusing. It's not clear where my child should get on the bus
The bus stop on our street is too far for one of the kids and should be either at 3 Bourbeau as it is in the middle for those children who take the bus in our neighborhood.
The buss pass of \$300 is extremely costly. My daughter only takes the bus home from school, not to school and I requested a discount and it was refused. As a single income family and a sole parent, this is very expensive for me. You should provide options so that it is not such a burden on some families to simply get their children home from school.
The cost for a bus pass is really expensive -please decrease the cost
The current bus stop at the corner of Water Street and Rolfes/Ocean avenue is too dangerous for a bus stop. I request it be changed to Water Street and Shandel where my son has Ben going for the last 8 years.
The fee structure for bus transportation is not equitable. All families should be charged an equal amount if they decide to take the bus. Currently, families that have chosen to live downtown or nearer to school (less than 2 miles) are charged a fee, and those who opted to live further out of town are not. We chose to live downtown, in part, so that our kids could have the option to walk or take the bus depending on weather, schedules, etc. We would not mind paying our fair share of the bus fee, but think it is unfair to allow other families who have chosen to live beyond 2 miles to not contribute to the overall bus cost. The decision to live outside of town is one that made with an understanding that transportation costs (car, fuel, etc) is part of the deal. If school bus travel is going to be a part of that mix, there should be a cost associated with it - and shared fully across the community.
The other joint custody parent lives on Union Street (cross street: Marlboro Street)
The pickup would be more convenient for current students at Water/Independent vs Water/Fair.
The process was very efficient to sign my son up. Thank you! Bus driver is an absolute love.
There is no reason why our district cannot pay for bussing. With all the fees we are stricken with right now, this is an added expense families cannot afford.
There should be a stop at Finnegan and dennett for the little kids, just like there is for the Nock/molin bus
There should be an adult monitor on each bus to make sure kids are behaving and not picking on anyone. I think a parent volunteer would be great for this.

There should be bus monitors to ensure kids are behaving and not bullying or being bullied.
They should place cameras that capture cars breaking bus sign laws as my child has almost been hit several times
This is a grandchild living with me. I still work also.
This past year the bus times were very consistent.
To have a child on bus for 25-30 minutes when we live 1/2 mile from school is crazy. The route takes him across town before he gets to his street-(last stop) we literally could walk home faster.
Under 2 ml from school paying an expensive fee is totally a discriminatory and have no sense. Think about cold winter days or rainy days a first grade kid walking to school.
Under 2 ml from school paying an expensive fee is totally a discriminatory and have no sense. Think about cold winter days or rainy days a first grade kid walking to school.
We appreciate bus service, particularly since we both work.
We are close enough that it seems excessive to pay the bus fee, but just far enough that getting to school in worse weather causes annoyance (they still bike if it's raining...but if it's pouring, we aren't heartless about it). Bus fee seems to actually promote more driving than it should, since 2 miles can be far for younger children in the winter. 1-1.5 miles seems a bit more reasonable as an expectation
We are deeply grateful for the bud, and for fees being waved in our income bracket.
We are right in the border to pay but it's not feasible to walk to school from our address
We both work and have two other children thus we are unable to drive and pick her up. We need the bus even though we live less than 2 miles from the school.
We didn't have a bus pass last year only because we had no kids in the school system.
We do the y after school program in the afternoons which is why the bus is less frequent in the afternoons. Thank you for the bus service!
We don't take the bus, but I am surprised to hear that families are charged for it.
We had a great experience last year with Joe
We have no sidewalks-this is the busiest area (the road to plum island aka the highway of Rolfes/Ocean is dangerous), while my last student is old enough to drive-we stopped using the bus years ago because of the safety issues getting TO the bus stop
We have not received our bus pass for this year and I'm not sure who to contact for this.

<p>We have two children at the Bres (K and 2d) and we need to pay \$600 for bus passes as we are just under the mileage requirement. I understand the mileage distance to have to pay for buses,, especially as children are older and more independent and can chose to walk or ride bus, but for our children, they are still too young to walk, and more importantly, there are not sidewalks during some parts of the walk between our house and the school. I would feel if the town is requiring some families to pay for the buses, those families should at least have the option to decide to pay, or have an option for their children to walk to school for free safety on a sidewalk, and until there are sidewalks the town should cover their busing to school. Please feel free to contact me at 617 271-6074 with any additional questions. Wishing you all a great school year! Thanks again, Jeff Rahilly</p>
<p>We have two children with bus passes requested for 22-23.</p>
<p>We like the option for the bus. We live near West Newburyport and donâ€™t feel comfortable with him walking down Hale Street and feel itâ€™s a bit of a hike going down 113.</p>
<p>We live a little over 2 miles away from the school and have free bus transportation. However, I have friends who live closer to the school and they often comment that the bus transportation should be free to encourage all families to use it.</p>
<p>We love close to school and my child sometimes walks or rides his bike, but the crossing guard arrives too close to the start of school and the sidewalk on Low St is very narrow, often has plants overgrown on it, and does not always feel safe for a bike (his preferred mode of transport). Also, last year, the bus path changed. Although we are the closest stop to school he was the 2nd pick up and 2nd to last drop off - having to ride through downtown and part of the South End to and from school, which was less than ideal. Most importantly - thank you for the survey and taking the time to reach out to families!</p>
<p>We love our bus driver!</p>
<p>We love our bus driver!</p>
<p>we LOVE The bus. THANK YOU! our daughter has gained independence and she is grateful</p>
<p>We loved our drive last year!</p>
<p>We REALLY appreciate it when the bus driver is able to drop our son off in front of the house and quickly verify heâ€™s able to get inside / weâ€™re home before driving off (as opposed to a short way up the street, at the actual bus stop), as this helps with the ability to work from home with fewer scheduling interruptions.</p>
<p>We stopped taking the bus when families of 4 children werenâ€™t given a break. It became too expensive and too few busses meant that my children were on the bus for far too long. Also it should be used as a form of transportation for children to go over other kidâ€™s houses, etc. This encourages future bus use.</p>
<p>We take pride in almost never driving to and from school. Crazy how many people wait in those long lines. Bad for environment, traffic, fostering independence etc.</p>
<p>We would like the bus to stop in front/near the front of our house as it drives by each day.</p>

When the kids were younger they took the bus to the Molin. I think they switched to walking around 5th grade
When we first moved to NBPT we had a rather unpleasant experience with the bus office staff. We had first thought the bus would be better than walking and paid for our son to take bus. Half way through the year they changed the bus pick up location, I called to discuss and the staff was so rude, I was shocked. I even had to get Lisa the principal at Nock involved. I honestly can't believe this company works with kids. The bus drivers were very kind but office staff was just awful.
While bus will be Paige's main transportation we will also be picking her up and dropping occasionally
With well documented advance notice it would be REALLY helpful if kids could ride home on the bus to other kids homes.
Would like my child to not have to walk in dark in the winter months up to Ferry Rd
Would like to have bus stop for younger children (1st grade) to have at house pickup rather than walk to a bus stop. Bus stops in the storeybrooke and Virginia neighborhoods are not clear in the beginning of the year due to the no named cut throughs . A map of the route and marked stops on a map would be very helpful to start the year.
WOULD LIKE TO KNOW WHERE THE BUS STOP IS FOR US FOR 2022-2023

Newburyport Public Schools

BUDGET PROCESS - DRAFT

Date: November 2, 2022

Re: FY24 Budget Development – Schedule

Below is the schedule for the Central Office review of the FY24 budget.

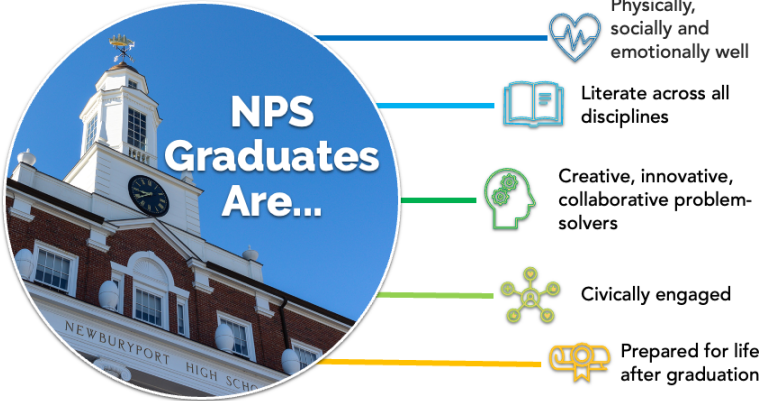
<u>Dates</u>	<u>Activity</u>	<u>Responsible Party</u>
October 2022	Develop/Finalize Budget Calendar	School Committee/Central Office
October / November 2022	Current Budget Development & SIP through each School Council	Bresnahan Molin Nock High School
November 8, 2022	Budget materials sent to Leadership Team	Central Office
November 15, 2022	Joint meeting of City Council and School Committee	School Committee/City Council
November 18, 2022	FY24 Budget Materials due at the Central Office.	Leadership Team
November 28, 2022	Materials reviewed and entered into the Budget in the “FY24 Proposed Budget” column.	Central Office
November 30, 2022	Central Office Review with Budget Managers: 7:30 am Bresnahan School Early Childhood (Pre-K – K) 8:00 am Bresnahan School (Grades 1-3) 8:45 am High School 9:30 am Nock Middle School 10:00 am Athletics 10:45 am PreK-5 Literacy Specialist 11:30 am Molin Upper Elementary (Grades 4-5)	Central Office & Leadership Team
December 1, 2022	Central Office Review with Budget Managers: 8:00 am Health Services 8:30 am Music, Art and PE Liaisons 9:15 am Technology 10:00 am Student Support Services 10:30am ELL Program 11:15 pm Assistant Superintendent	Central Office & Leadership Team
December 2022	Budget Meeting All Members of Leadership Team Identify District Priorities tied to Strategic Plan.	
December 2022	Budget Meeting on December 19th	Deliberations with ELT
December 19, 2022	Superintendent’s Report: Budget update to School Committee	
December / January	Budget Updates with the School Committee	School Committee/Central Office
January 2023	Capital Budgets Update Meeting	School Committee/Central Office
January 2023	Preliminary Draft of FY24 Budget to Administrative Team for review	Central Office

<u>Dates</u>	<u>Activity</u>	<u>Responsible Party</u>
January 2023	Preliminary Draft of FY24 Budget to School Committee for review	Central Office
February 2023	Superintendent's Preliminary FY24 Budget Presentation to School Committee	Central Office
February 2023	School Committee Budget Deliberations	School Committee
March 6, 2023	Public Presentation of Preliminary FY24 Budget	School Committee/Central Office
April 3, 2023	Presentation of School Budget to City Council	School Committee/Central Office
May 2023	City overall FY24 Budget approved	Mayor & City Council

NPS District Strategic Goals, School Year 2022-23

Guided by our Portrait of a Graduate

Newburyport's Portrait of a Graduate



Aligned to our Five Strategic Objectives

Reimagine...

1. Teaching and Learning
2. Supports so all Students are Ready and Able to Learn
3. A Culture of Self Discovery and Personal Achievement
4. Organizational Design and Operations
5. An Active Community of Stakeholders

Our strategic theme is to *reimagine*, an idea that reminds us that continuous learning and a cycle of improvement are the hallmarks of effective educational decision-making.

Structured to Address State Guidelines and Focused on Identified Needs

School districts already have structures in place to guide two-year goal setting plans at all levels. Each of these plans (see below) identify the specific and measurable actions the district, school, or educator will be taking to achieve (1) the Portrait of a Graduate vision and (2) the strategic objectives.

Level	Plan	Development	Reporting
District	District Goals and Improvement Plan	Superintendent and School Committee	Annual updates are reported to School Committee
School	School Improvement Plan	Principals and School Councils	Annual updates are reported to the Superintendent and School Committee
Educators	Educator Goal	Educators	Annual evaluation cycle is overseen by the school administrative team

District Goals

NPS uses a future focused planning model that identifies a 2-year tactical cycle (see graphic). We have aligned this cycle with the DESE guidelines for goal setting.

DESE recommends four areas for the district level two-year goals. Below are the identified NPS goals for the DESE areas.

1. Professional Learning Goals

We will increase our instructional leadership expertise and capacity within the district to support teachers in meeting the needs of all learners.

2. Student Learning Goals

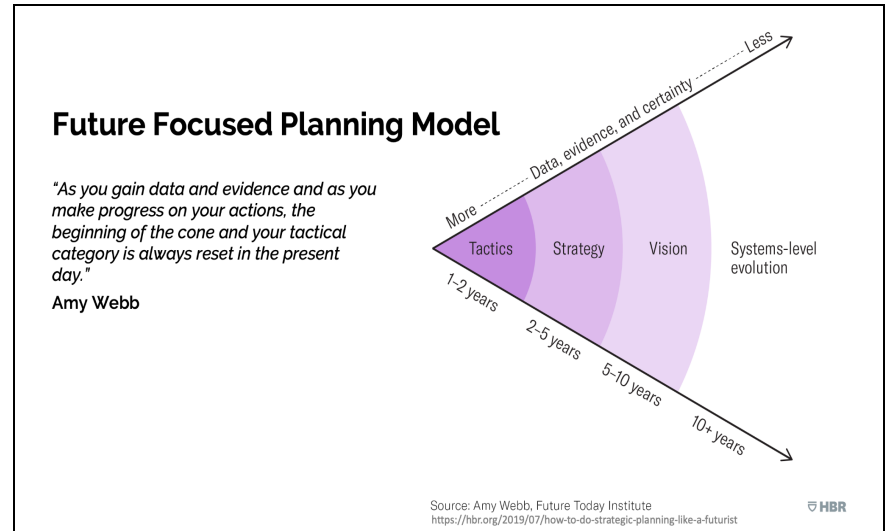
We will increase support to improve student achievement for all students while closing existing achievement gaps for economically disadvantaged students and students with learning disabilities.

3. School Improvement Goals

We will increase the ability of grade-level and content-specific professional learning communities to use student, parent and teacher-friendly data cycles.

4. District Improvement Goals

We will have a system to ensure a comprehensive, rigorous, equitable, and relevant curriculum that is aligned to the Massachusetts curriculum frameworks.



Goal-Strategic Objective Matrix

For each goal, our tactical focus areas align with our strategic objectives.

Reimagine:	Teaching and Learning	Supports so all Students are Ready and Able to Learn	Culture of Self Discovery and Personal Achievement	Organizational Design and Operations	Active Community of Stakeholders
Professional Learning Goal instructional leadership	Implement PK-12 literacy plan	Language and Strategies Based Professional Development Co-teaching model	Expand behavioral health capacity District-level support for student voice programs	Structures to Support Active Teacher Leadership	Structures to Support Active Teacher Leadership
Student Learning Goal closing achievement gaps	High impact and engaging instructional practices are used across the district	Special education program development (IDC, Therapeutic, strategies-based, language based, ABA)	Extended day and vacation programs	Free Kindergarten for all students Special education and Intervention positions	Established reporting structure to share progress with community
School Improvement Goal student, parent and teacher-friendly data	District-wide plan for data collection, analysis and reporting (iReady, Data teams, student led conferences)	Intervention at every level (intervention positions) iReady implementation	District level support for student-centered data analysis Student-led Conferences	Established district-level reporting structure	Established district-level reporting structure
District Improvement Goal comprehensive, rigorous, equitable, and relevant curricula	Ongoing cycle of curriculum review (curriculum maps) Established district-level reporting structure	District-wide multi-tiered systems of support (behavioral health, SSTs) Expansion of Co-teaching Model	Expanded opportunities for learners at all levels (summer and vacation programs)	Special education program development	District-level communication plan

2022-23 School Year – Outcomes

1. **Professional Learning Goal:** We will increase our instructional leadership expertise and capacity within the district to support teachers in meeting the needs of all learners.
 - a. Implement PK-12 Literacy Plan
 - i. Foundations lessons taught daily in all K-3 classrooms as measured by administrator evaluations.
 - ii. MyView curriculum resource used effectively in all K-6 classrooms as measured by administrator evaluations.
 - iii. All staff show an enhanced understanding of current research around the science of reading as measured by feedback on professional development experiences.
 - b. Expand general educator use of language-based and strategies-based instructional strategies in identified grade-level areas (grades 4, 5, 7, and 9)
 - i. Educator understanding of language-based and strategies-based instructional practices is expanded based on attendance at and feedback on professional development programs.
 - ii. Language-based and strategies-based practices are used in target area classrooms as measured by administrator evaluations.
 - c. Continue to build capacity for co-teaching special education model
 - i. Educator understanding of best-practices for co-teaching is enhanced by professional development programs and measured by educator feedback and outside consultation.
 - ii. Scheduling and staffing issues are addressed by administrators as measured by increased co-teaching and a sustainable model for scheduling and budgeting.

- iii. Co-teaching is implemented in target areas as measured by building administrator evaluation.
 - d. Expand capacity and programs for student behavioral health.
 - i. Provide on-going Trauma Sensitive professional development opportunities to staff as measured by program offerings and evaluations.
 - ii. Establish comprehensive PK-12 student behavioral health goals and action steps as measured by a district behavioral health plan.
 - e. District-level support for student voice programs.
 - i. Provide professional development, budgetary and scheduling support for expanding teacher leadership for target student voice programs (constructive dialogue, student advisory, student leadership, student internships, student-led conferences) as measured by implementation of target programs at each school.
 - f. Implement structures to ensure sustainable and impactful educator leadership.
 - i. NTA negotiations and organizational relationships result in on-going innovation and problem-solving as measured by feedback from both management and the NTA.
 - ii. NPS organizational structures support educator growth and development as measured by NTA, IA and AFSCME union feedback on human resources and professional development opportunities.
- 2. **Student Learning Goals:** We will increase supports to improve student achievement for all students while closing existing achievement gaps for economically disadvantaged students and students with learning disabilities.
 - a. Promote a culture of innovation through PLC and PD programs as measured by educator feedback and implementation of new instructional approaches.
 - i. Constructive dialogue, Essential Partners—as measured by use of dialogues at both NHS and Nock
 - ii. Technology integration PLCs—as measured by teacher participating in programs
 - iii. 1:1 device program at NHS—as measured by implementation plan for program

- b. Increased use of high-impact instructional strategies as measured by administrative walkthroughs and extended leadership team observational evaluations.
 - c. Continued implementation of vacation and summer programs for advanced learners, English learners, intervention programs and special education students.
 - i. EL Camps
 - ii. Advanced Academy
 - iii. Extended Year Special Education Programs
 - iv. After School Hours
 - d. Support effective use of new special education and interventionist positions in grades 1-12 as measured by school-based data tracking.
 - e. Provide organizational and operational support for a full free kindergarten program as measured by a fully-implemented program and an annual sustainable budget.
 - f. Established reporting structure to share district-level student learning progress with the community as measured by identified reports and reporting dates.
3. **School Improvement Goals:** We will increase the ability of grade-level and content-specific professional learning communities to use student, parent and teacher-friendly data cycles.
- a. Implementation of district-level data teams as measured by identification of team and team professional development and meetings.
 - i. District level data reports are produced and presented to parents annually.
 - ii. School Councils review and analyze school level data.
 - iii. Elementary educators review report card format and implement changes.
 - b. Support effective use of interventionist positions in grades 1-12 as measured by school-based data tracking.

- c. iReady data and intervention systems support individualized planning and data tracking in grades 1-8 as measured by effective implementation and ongoing data tracking by classroom teachers.
- d. Support piloting of student-led conferences at the middle school as measured by design and completion of conferences at two grade levels in 2022-23 school year (application of constructive dialogue work).

4. District Improvement Goals: We will have a system to ensure a comprehensive, rigorous, equitable, and relevant curriculum that is aligned to the Massachusetts Curriculum Frameworks.

- a. Published Curriculum Maps ensure that all professional staff members have common knowledge of and common language for use of the MA Curriculum Frameworks.
 - i. Continue the design and revision of standards-aligned units of study, K-12.
 - ii. Continue stage 2 of the curriculum mapping process by identifying common assessments for each unit of study.
- b. Expansion of Language-Based and Standards-Based Instruction into the Breshanan and Nock will provide increased supports for special education students and will support high level of achievement (implementation measured by fully staffed programs grades 4-8 and achievement measured by student assessment including MCAS, iReady and program-specific measures).
- c. Continued support for effective implementation of co-teaching strategies will increase the effectiveness of interventions for all students as measured by district-level professional development for staff and evaluation of implementation by district administrators and teachers.
- d. Continue to build capacity for co-teaching special education model
 - i. Educator understanding of best-practices for co-teaching is enhanced by professional development programs and measured by educator feedback and outside consultation.
 - ii. Scheduling and staffing issues are addressed by administrators as measured by increased co-teaching and a sustainable model for scheduling and budgeting.

- iii. Co-teaching is implemented in target areas as measured by building administrator evaluation.
- e. Continue to expand capacity for accessible and timely communications at all levels in the district.
 - i. Maintain and further develop District website and District App as measured by up-to-date sites.
 - 1. Develop internal capacity for effective use of communications tools as measured by the number of staff able to use Blackboard and associated products.
 - 2. Collect and integrate parent feedback.
 - ii. Provide regular communication to the community using a variety of formats (e.g., email, text, website, District app, phone, presentations and video formats).

NUTTALL, MACAVOY & JOYCE, P.C.

ATTORNEYS AT LAW
MARSHFIELD PROFESSIONAL CENTER
1020 PLAIN STREET, SUITE 270
MARSHFIELD, MASSACHUSETTS 02050
TELEPHONE (781) 837-7428 FACSIMILE (781) 837-7498

THOMAS J. NUTTALL
MATTHEW W. MACAVOY
MICHAEL J. JOYCE

LEIGH W. MELLO
KELSEY M. PORCELLO
CRAIG F. KOWALSKI
B. PATRICK NEVINS
COLLEEN C. TOWLE

October 26, 2022

CLIENT ALERT

Nuttall, MacAvoy & Joyce, P.C.

New School Discipline Requirements

On November 9, 2022, schools will need to be in compliance with a new, amended version of M. G. L. c. 71, § 37H ³/₄. Prior to suspending or expelling a student under M. G. L. c. 71, § 37H ³/₄, principals, or their designees, will be required to use alternatives to removal (e.g., mediation, restorative justice, conflict resolution, etc.), and must document the use and results of such alternatives. From the language of the statute, this new limitation appears to apply to both in-school and out-of-school suspensions under M.G.L. c. 71, § 37H ³/₄. Exceptions may apply if the principal, or designee, documents specific reasons why such alternatives are unsuitable or counter-productive, or documents that the student's continued presence in school would pose a specific concern about the infliction of serious bodily injury or other serious harm upon another person while in school. Additionally, regardless of whether there has been a specific incident, schools must implement school or district – wide models to re-engage students in learning (e.g., trauma sensitive learning, positive behavioral interventions and supports, etc.).

NUTTALL, MACAVOY & JOYCE, P.C.
ATTORNEYS AT LAW

It should be noted, however, that the new limitations on the imposition of suspensions or expulsions for school rules violations in accordance with M.G.L. c. 71, § 37H3/4, does not impact or limit a principal's authority to impose a suspension or expulsion for statutory offenses involving weapons, drugs, assaults of school staff or felony charges in accordance with M.G.L. c. 71, §§ 37H and/or 37H1/2.

The changes will require updated disciplinary letters to address these new requirements. At this stage, DESE has provided no notice, guidance, or updated regulations on these changes. That being said, in order to comply with the new law, schools will need to change their existing student discipline forms and letter templates.

If you would like revised, updated forms and letters please contact us: slb@snclegal.com or (781) 837-7428. As the new law takes effect on November 9, 2022, we advise your prompt attention to this matter.