

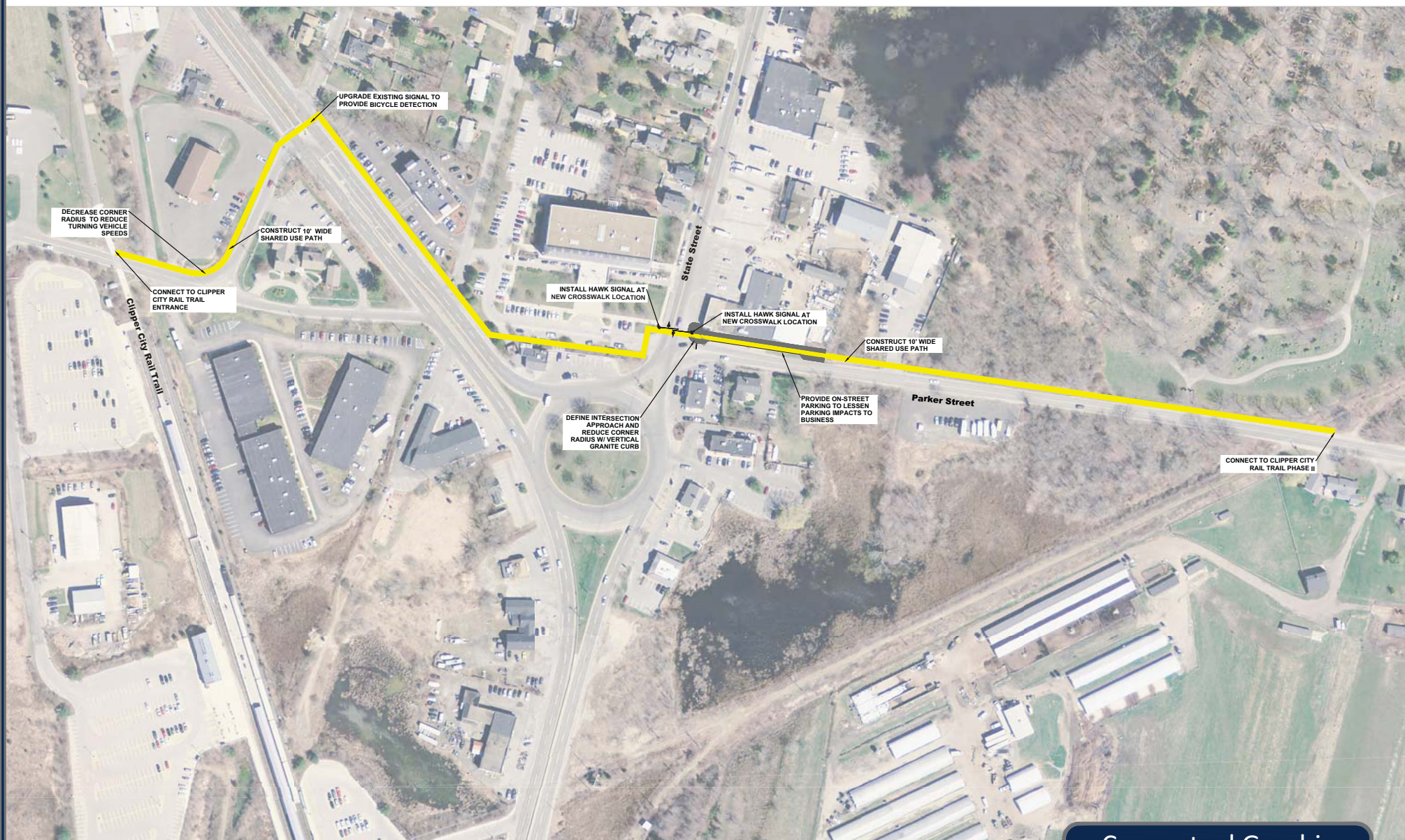
Parker Street-State Street-Route 1 Crossing Project

The intersection of Parker Street, State Street, and Route 1 is a dangerous and inhospitable area for pedestrians and bicyclists, as well as an area with a high rate of motor vehicle accidents. In November 2016, a motorist hit and killed a pedestrian attempting to cross the street. This area is in the middle of Newburyport's designated "40R Smart Growth District," which is intended to create dense residential neighborhoods near transit stations with substantial affordable housing. The first 76-unit 40R Smart Growth apartment complex is currently under construction in the vicinity. This area is also located between Phase I and Phase II of the Clipper City Rail Trail.

TEC's concept plan would construct a shared-use path along Parker Street between the Clipper City Rail Trail Phase II trailhead in Newbury and the Clipper City Rail Trail Phase I trailhead at the commuter rail station. The project would install curbing and reconstruct the approach of Parker Street at its intersection with State Street, where there have been a number of accidents and injuries, and install a pedestrian-activated signal as well as on-street parking. The project would install a shared-use pathway along the edge of the Parker Street right-of-way through the Newburyport District Court complex (which is owned by the City but currently used for parking and circulation by the District Court). TEC's concept plan would install a shared-use pathway along the state's Route 1 highway right-of-way to the existing signal at the Hill Street intersection, and then continue along Hill Street back to Parker Street and the Clipper City Rail Trail trailhead.

(Other proposed variations in this area include establishing a new and more direct crossing of Route 1 at Parker Street. MassDOT has also recently proposed establishing sidewalks along the Route 1 Rotary and a new crossing near the Rotary, as well as a longer-term potential reconfiguration of the rotary into a T-intersection or modern roundabout.)

TEC estimates that this proposed project would cost \$890,000 to construct.



Conceptual Graphic

Rail Trail Connection (Phase III)
Complete Streets Prioritization Plan
Newburyport, Massachusetts

Scale: 1" = 80'

February 14, 2019

Legend

- = Shared Use Path
- = Concrete Sidewalk



TEC, Inc.
146 Dascomb Road | 169 Ocean Blvd
Andover, MA 01810 | Hampton, NH 03842