

Brown School

Adaptive Reuse

Neighborhood Meeting

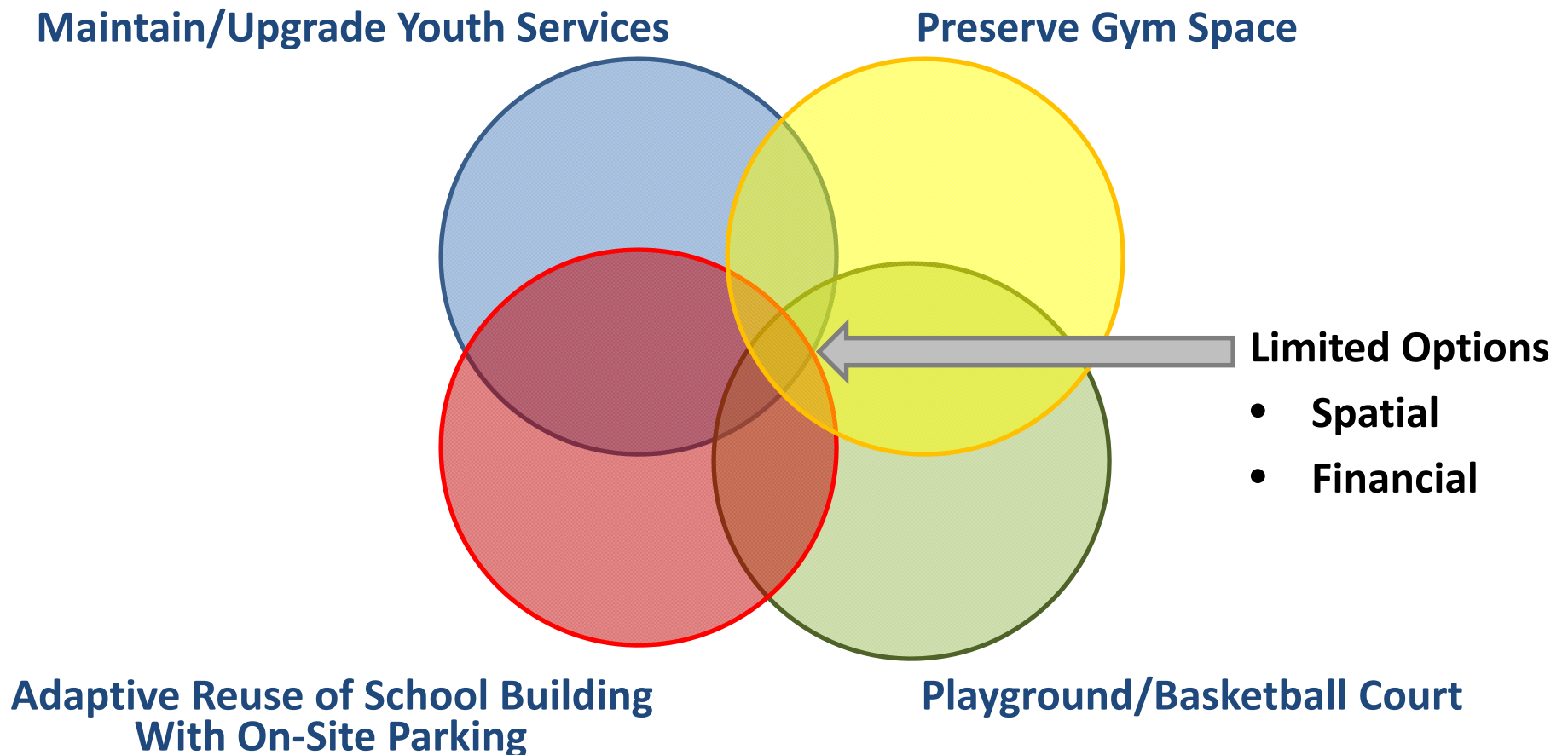


January 25, 2018

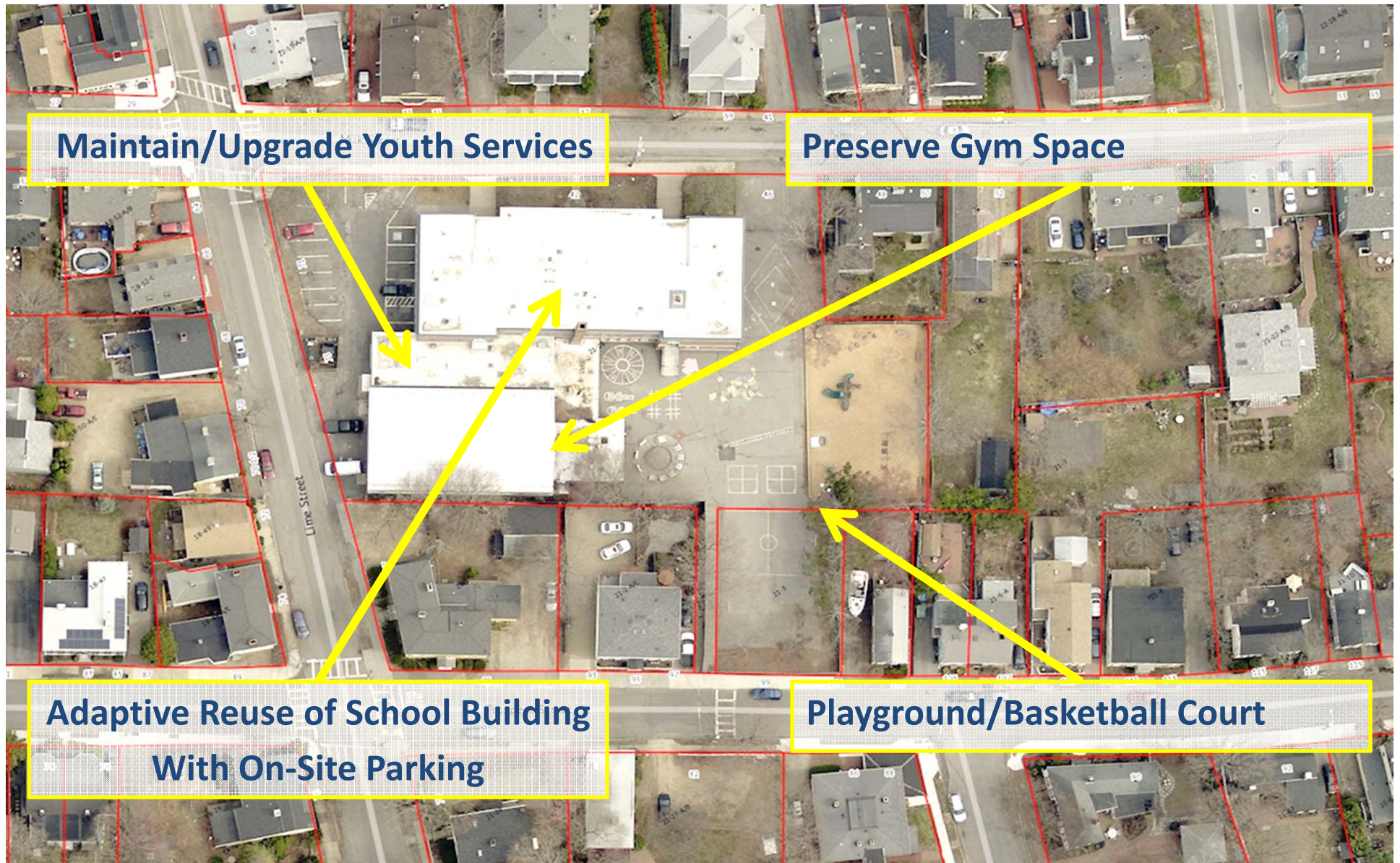
Review of Timeline to Date

- Building Construction (Core U-Shape) 1922-1925
- Gym/Single Story Addition 1970
- Three-Story Addition/Expansion 1975
- Youth Services moved to Brown School 2014 (August)
- Educational Study Group Options/Report 2015 (May)
- School Committee Vote to Decommission 2016 (March)
- Initial Request for Proposals (RFP) Issued 2017 (March)
- Proposals Received (3) 2017 (May)
- Proposals Reviewed by Selection Committee 2017 (Oct)
- Discussion of YS Relocation/RFP Revisions 2017-2018
- Neighborhood Meeting/Update 2018 (Jan)

Key Public Interests / Objectives



Key Public Interests / Objectives



Key Elements in Request for Proposals

- Preservation of Gym Space
- Preservation of Playground/Basketball Court
- Proposed Adaptive Reuse (*responses limited to residential*)
- Proposed Configuration/Upgrades to Youth Services
- Proposed Percentage of Affordable Housing Units
- Proposed Site & Building Configuration
- Proposed Purchase/Lease Price
- Proposed Project Timeline
- Proposer Qualifications/Experience

Summary of Issues with Initial Proposals

- Proposed Configuration of Youth Services
- Proposed Purchase Price
- Proposed Project Timeline
- Proposed Level of Affordability (percentage of affordable units)
- Proposed Number of Units / Parking Demand

Next Steps

- Evaluate Potential Off-Site Locations for Youth Services
- Council Vote (Disposition)
- Revise & Re-Issue Request for Proposals (RFP)

An aerial photograph of a city block, likely in New York City, showing a large brick building with a flat roof and several smaller residential buildings. Red lines delineate individual lots, many of which are numbered. The central building is a large, multi-story structure with a flat roof and a prominent chimney. It is surrounded by smaller, multi-story buildings with varied rooflines. The streets are paved, and there are several cars parked along the curbs. The overall scene is a dense urban environment.