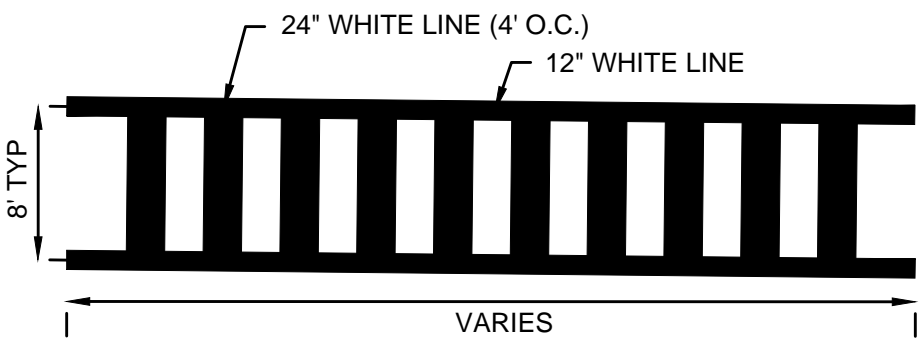
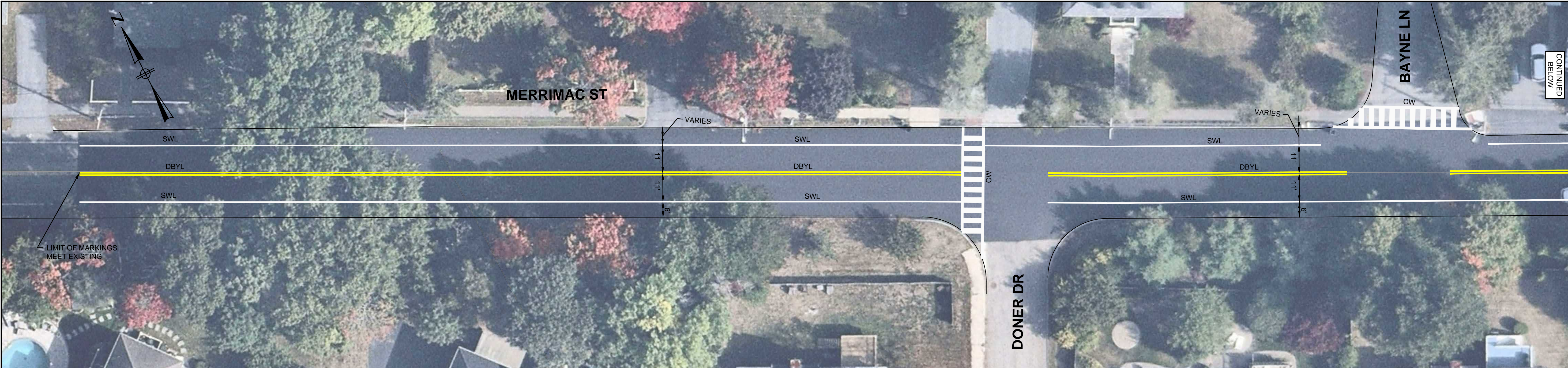


11/9/2020 10:47 AM BETA GROUP INC. TEMPLATE (BETA, STANDARD, TEMPLATE - 1.0/2020) CIVIL 3D (2020) PLOTSTYLE (BETA STB BW STB) USER(TDERUITER) \\BETA-INC.COM\ENGIN\NEWBURYPORT\_M\MERRIMACK\_STREET\STRIPING\_V2.DWG



**NOTES:**

- CROSSWALKS SHOWN AT LOCATIONS OF EXISTING CROSSINGS OR WHEELCHAIR RAMPS
- ALL CROSSWALKS SHOULD PROVIDE ACCESSIBLE RAMPS IN COMPLIANCE WITH ADA AND AAB STANDARDS
- CROSSWALK WARNING SIGNS SHOULD BE UPDATED IN ACCORDANCE WITH THE 2009 MUTCD



**TYPICAL CROSSWALK SIGNS**

**NOTES:**

- SEE 2009 MUTCD FOR SPECIFICATIONS
- ARROWS AND WALKING MAN SYMBOL SHALL FACE AS ENTERING THE ROADWAY

**PAVEMENT MARKINGS AND SIGNING SYMBOLS**

**PROPOSED**

- CW CROSSWALK - SEE DETAIL  
SL STOP LINE - 12" WHITE LINE  
SWL SOLID WHITE LINE - 6"  
DBYL DOUBLE YELLOW LINE - 2 - 6" LINES



ACCESSIBLE SYMBOL - WHITE

**PAVEMENT MARKING & SIGN NOTES**

- ALL EXISTING SIGNS AND SIGN POSTS WITHIN THE PROJECT LIMITS SHALL BE RETAINED UNLESS OTHERWISE NOTED ON PLANS.
- ALL EXISTING PAVEMENT MARKINGS THAT CONFLICT WITH THE PROPOSED PAVEMENT MARKINGS SHALL BE REMOVED BY AN APPROVED METHOD.
- ALL PROPOSED SIGN POSTS SHALL BE P-5 TYPE (TELESCOPIC POST).
- UNLESS OTHERWISE PROVIDED FOR IN THE MUTCD, ALL SIGNS SHOULD BE 90° TO THE CURB AND FACING THE FLOW OF TRAFFIC.
- ALL R&R SIGNS SHALL BE MOUNTED ON NEW POSTS.
- SIGNS TO BE MOUNTED NEAR THE CURB LINE IN AREAS WITHOUT SIDEWALK SHALL BE SET BACK 6" FROM THE EDGE OF THE SIGN PANEL TO THE CURB LINE. NO SIGN SHALL OVERHANG THE CURB LINE.
- ALL SIGNS SHALL BE MOUNTED TO PROVIDE A 7' MINIMUM CLEARANCE BETWEEN THE BOTTOM OF THE SIGN AND FINISHED GRADE.

PREPARED BY



REGISTERED PROFESSIONAL

SUBCONSULTANT

AERIAL IMAGERY SOURCE: NEARMAP  
AERIAL IMAGERY DATE: SEPTEMBER 2020

PROJECT

**Merrimac Street**

**Roadway Striping**

**Newburyport, Massachusetts**

TITLE

**Pavement Marking and  
Signing Plan**

NO.	REVISIONS	DATE
-----	-----------	------

DRAWN BY:	TAD
-----------	-----

DESIGNED BY:	TAD
--------------	-----

CHECKED BY:	DJ
-------------	----

ISSUE DATE:	11/06/2020
-------------	------------

BETA JOB NO.:	7371
---------------	------

SCALE



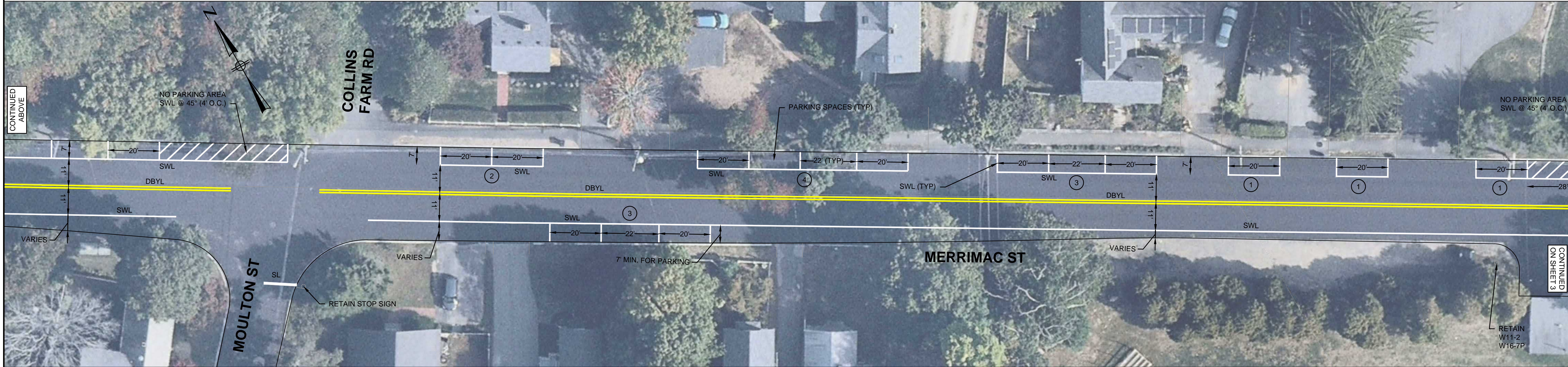
UNLESS OTHERWISE NOTED OR CHANGED BY REPRODUCTION

**For Review Only**

SHEET NO.

**1 OF 4**





PREPARED BY



REGISTERED PROFESSIONAL

SUBCONSULTANT

AERIAL IMAGERY SOURCE: NEARMAP  
AERIAL IMAGERY DATE: SEPTEMBER 2020

PROJECT

# Merrimac Street Roadway Striping

## Newburyport, Massachusetts

TITLE

## Pavement Marking and Signing Plan

[illegible]

NO.	REVISIONS	DATE
DRAWN BY:	TAD	
DESIGNED BY:	TAD	
CHECKED BY:	DJ	
ISSUE DATE:	11/06/2020	
BETA JOB NO.:	7371	

SCALE



UNLESS OTHERWISE NOTED OR CHANGED BY REPRODUCTION

For Review Only

SHEET NO.







