

270 Water Street Atkinson Common Atwood Park Ayers Playground Bartlet Mall
Brown Square Cashman Park Cherry Hill Fields Clipper City Rail Trail Cushing Park
Inn Street Jason Sawyer Joppa Park March's Hill Market Landing/Bullnose
Moseley Woods Patrick Tracy Square Perkins Park Newburyport Skate Park
Three Roads Park Woodman Park Waterfront Park



NEWBURYPORT PARKS INSPECTIONS REPORT

Lisë Reid, Director
Newburyport Parks

FALL 2014

270 Water Street

Safety Issues

-

Other repairs and/or cosmetics

- Several dead shrubs need to be replaced

Actions taken

- Worked with landscaping contractor to improve lawn

NEEDS AT 270 WATER



Several dead shrubs resulting from lack of irrigation need to be replaced.

IMPROVEMENTS AT 270 WATER



A professional landscaping contract keeps the park looking generally well-kept.

ATKINSON COMMON

| Safety Issues | Other repairs and/or cosmetics | Actions taken |
|---|--|--|
| <ul style="list-style-type: none"> Some trees present a safety hazard to pedestrians | <ul style="list-style-type: none"> Gazebo needs staining; roof needs pressure washing before winter does further damage to building materials Gazebo sill is rotting and has ants; requires replacement Granite bollard broken Rules signage needs replacing Dumping a problem along Chase Street entry area & behind Plummer Ave residences encroaching on park Irrigation line broken near High St. requires underground investigation | <ul style="list-style-type: none"> Repaired new cracks in tennis courts CPA funding secured to address safety issues with trees this fall Parks Commission reviewing rules signage in all parks before repairing then will replace sign Coordinating with Planning Director to deal with encroachment on park by neighbors. Lily Pond curbing replaced with grant funding Contacted Water Dept about helping to repair broken irrigation lines |

NEEDS AT ATKINSON



Wooden shingles on the historic gazebo need pressure washing and repainting



Some park benches need refinishing.

IMPROVEMENTS AT ATKINSON



A portion of the gazebo sill is rotted and needs replacing.



Deteriorated Lily Pond curbing was replaced with grant funding.

ATKINSON COMMON - PIONEER FIELDS

| Safety Issues | Other repairs and/or cosmetics | Actions taken |
|--|--|---|
| <ul style="list-style-type: none">• Need to address parking issues along Merrimac Street• Playground needs safety surfacing• Fly ball netting needs replacing to protect playground• Playground fence support pole loose• One see-saw bumper needs replacing | <ul style="list-style-type: none">• Clubhouse needs renovation• Playground structures could use touch up paint• Park benches need repair-refinishing or replacement• Swing set aging• Storage shed needs repainting and some woodwork repair• Asphalt needs resurfacing throughout the park | <ul style="list-style-type: none">• Met with Pioneer to discuss Phase 4a of Diamond Dreams: East Parking Lot Renovation |

NEEDS AT PIONEER



Play structures could use cleaning and paint touch up.



Dilapidated benches are unattractive and present a safety hazard.



Clubhouse needs renovation and asphalt needs resurfacing throughout the park.



Storage-utility shed needs some woodwork repair and repainting.



One rubber-tire bumper is deflated under the see-saw and needs to be replaced.

IMPROVEMENTS AT PIONEER



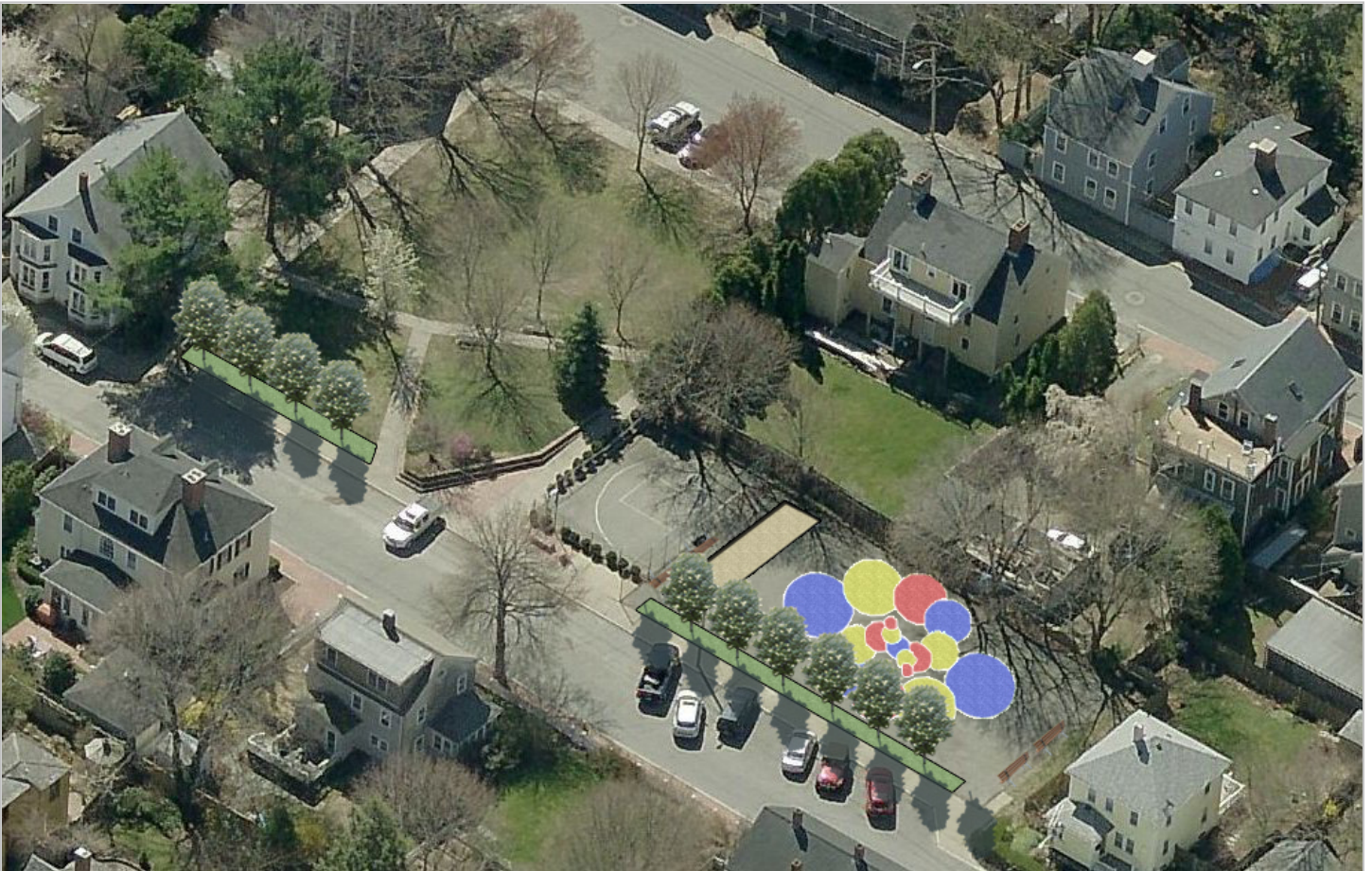
Fields are in good shape (above). Pioneer League has invested \$300,000 into fields, irrigation, infields, fencing and new dugouts (below). Beginning in spring 2009, they completed one field a year through spring 2011.



ATWOOD PARK

| Safety Issues | Other repairs and/or cosmetics | Actions taken |
|---|---|---|
| <ul style="list-style-type: none"> Chain link fence rusted & detached Ditch & cracks in tennis court area | <ul style="list-style-type: none"> Tennis net missing & posts broken Cracks in asphalt of basketball court Brick wall broken in three places; brick needs re-pointing Benches need sanding, sealing Brick bench broken, needs 6 new bricks Graffiti on basketball backboard | <ul style="list-style-type: none"> Coordinated sponsorship program with Opportunity Works & Hennessey Landscaping to maintain the park weekly; lawn quality has improved; trees have been mulched Secured CPA funding and Morrill funding to carry out phased improvement project. Seeking additional Morrill funding for this project. |

NEEDS AT ATWOOD



Drawing above depicts planned improvements at Atwood Park. The former tennis court will receive a new asphalt surface to provide a safe place for kids to ride bikes, scooters, etc.; the colored circles represent an area where a bike riding track will be painted; new planting bed with street trees line the edge of School Street; new fencing will be installed; and a concrete table tennis unit would be placed where the originally planned bocce court is pictured above. Since this drawing was done, the bocce court was removed from the plan due to maintenance concerns and additional, ornamental fencing was added between the play area and the School Street planting bed.

AYERS PLAYGROUND

| Safety Issues | Other repairs and/or cosmetics | Actions taken |
|--|--|--|
| <ul style="list-style-type: none"> • Swing chains need replacement • Need new safety surfacing | <ul style="list-style-type: none"> • Basketball court needs repaving & relining • One basketball hoop needs replacement • Track ride handle missing • Decals peeling off of alphabet toy • Walkway, cobble plaza and play area weedy • One bench needs touch up painting • Signpost needs painting • Need new flag | <ul style="list-style-type: none"> • Putting together park improvement plan in consultation with residents in order to seek grant funding for park improvements |

NEEDS AT AYERS



Asphalt basketball court and play area is in need of resurfacing and re-lining.



Some portions of the climbing structure have been touched up but more touching up remains.

BARTLET MALL/FROG POND

| Safety Issues | Other repairs and/or cosmetics | Actions taken |
|--|---|--|
| <ul style="list-style-type: none"> • Water quality poor; potentially hazardous to people and pets • Need 6 new safety mats under swings, slides and under spinning component on play structure | <ul style="list-style-type: none"> • Basketball area needs re-paving • Play lot weedy • Picnic tables need refinishing and paint touch up (black) • Some stair handrails need touch up paint • Fence along High Street could use painting • Track ride has mildew, needs cleaning • Central fountain needs refinishing or replacement • Advisory signage wording needs to be corrected. | <ul style="list-style-type: none"> • Performed pond cleanup feasibility study; Phase 1a of Pond Restoration project • Seeking funding for future phases of pond restoration • Pruned street trees along Pond Street. • Installing new piping to increase volume of water flow in fountain • Hiring contractor to assess fountain structural integrity, need for replacement |

NEEDS AT BARTLET MALL



Above: A basketball court which doubles as winter parking is in serious need of resurfacing and restriping.



Above: Swing mats are deteriorated and need replacement.



Above: A feasibility study revealed that the Frog Pond appears to be suffering from eutrophication-induced poor water quality, as indicated by the presence of extended blooms of blue-green algae.

IMPROVEMENTS AT BARTLET MALL



Replaced broken and dangerous playground edging with new landscape ties.



Park signs were replaced with grant funding from The Mayor Gayden W. Morrill Charitable Foundation.

BROWN SQUARE

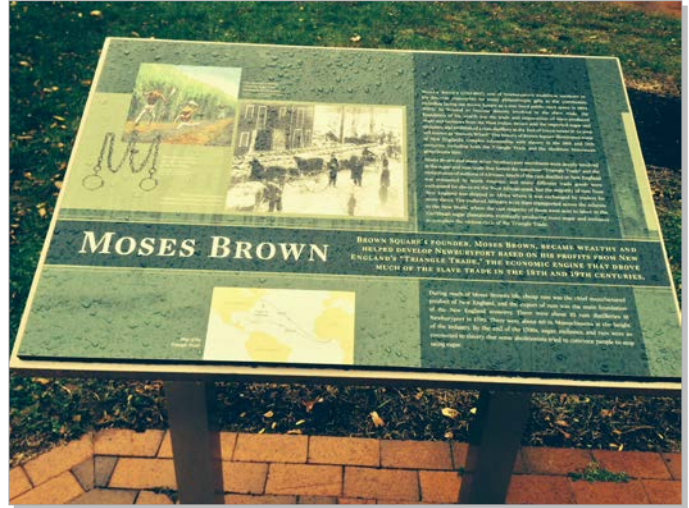
Safety Issues

Other repairs and/or cosmetics

Actions taken

- Paint on sign post peeling
- Interpretive panels replaced due to delamination

IMPROVEMENTS AT BROWN SQUARE



Badly delaminated interpretive panels were replaced.

CASHMAN PARK

Safety Issues

Other repairs and/or cosmetics

Actions taken

- | | | |
|---|--|---|
| <ul style="list-style-type: none"> • Walkway from Merrimack St. to river badly cracked • Need right field netting to protect pedestrians • Need right field fence repairs and fence capping • Accumulated leaves on tot lot • Cracks & puddles on basketball court • Needs safety surfacing • Off leash areas need some sort of barrier to reduce conflicts with between dogs and park users | <ul style="list-style-type: none"> • Cashman off leash lawn sparse, needs re-seeding • Off leash signage needs replacement • All gardens need weeding & mulching • Gardens near off leash area need plant replacements • Bolts need tightening on tot lot climbing structure • Need one new "No Dogs" sign for ball field • ball field needs new infill • Picnic tables and play structures need cleaning • Play structures need touch up paint • Some benches could use re-setting • Missing gymnastic ring on large climbing structure • Raise swings or lower grade under swings to accommodate swing mats • 1 basketball backboard needs painting • Abandoned signpost by boardwalk needs removal • Need new landscape ties | <ul style="list-style-type: none"> • Replaced bubbler • Replaced sea horse spring toys • Re-welded mast on central ship climbing structure • Reset and re-landscaped granite benches that were in danger of falling and presented a hazard • Added fence capping to left and center outfield fence |
|---|--|---|

NEEDS AT CASHMAN



While many landscape ties were replaced, further work needs to be done to address rotting ties.



Cracks on basketball court pose a safety hazard to players.



Several dead plantings need to be replaced in a garden bordering the off leash lawn area.

IMPROVEMENTS AT CASHMAN



Two new seahorse spring toys replaced missing play equipment.



Granite benches that posed a safety hazard were re-set in a newly landscaped seating area.



A new bubbler serves parks users of all sizes including its canine visitors.

CHERRY HILL FIELDS

| Safety Issues | Other repairs and/or cosmetics | Actions taken |
|---|--|--|
| <ul style="list-style-type: none"> Overgrown vegetation makes the site a target for dumping and other illegal activity | <ul style="list-style-type: none"> Neighborhood has concerns about too much traffic on Daniel Lucy Way because of soccer game traffic flow patterns. Park needs increased parking spaces to eliminate need for street parking A dilapidated back field needs improvement to provide a safe, athletic playing field. | <ul style="list-style-type: none"> Partial funding has been secured for a soccer field construction project, which will address increasing the need for additional playing fields at the site as well as security, traffic flow and parking concerns. |

Newburyport Youth Soccer

Cherry Hill Athletic Fields



October 2012

HUNTRESS Sports

Pictured above is a conceptual rendering of a soccer field construction project which is underway and will address increasing the need for additional playing fields at the site as well as security, traffic flow and parking concerns.

CLIPPER CITY RAIL TRAIL

| Safety Issues | Other repairs and/or cosmetics | Actions taken |
|---|---|--|
| <ul style="list-style-type: none"> Removal of several trees with deadwood and one dead tree near waterfront Removal of accumulated leaves on walkways | <ul style="list-style-type: none"> Low Street slope needs renovating Graffiti on electrical box Need wood chips around all benches Large limb to be removed north of labyrinth peace offering sculpture Peace offering sculpture needs washing, waxing, buffing Mural needs washing Will He needs repair Japanese knotweed needs removal Failing abutter fence north of Washington Street is an eyesore Plants encroaching on Washington St. sidewalk GAL garden sign missing Benches could use refinishing | <ul style="list-style-type: none"> Coordinated ongoing volunteer work on berry labyrinth, geometric gardens, Parker St gateway and Washington Street gateway gardens. Repaired Parker Street crossing light Replaced worn interpretive panels Contracted to renovate Low St. garden Had dilapidated grass couches removed Worked with volunteers to improve GAL garden near Parker Street Initiated mile marker sponsorships to support increased maintenance |

NEEDS ON RAIL TRAIL



Benches need a new base of wood chips and refinishing.



Above left: pet waste management contract may need to be increased to keep up with demand. Above right: bollards need touch up paint.



IMPROVEMENTS ON RAIL TRAIL



Increased maintenance of sloped planting areas improves appearance of the trail's problem areas.



Support-a-Spot program resulted in new gardens and an improved Parker Street gateway garden thanks to volunteer labor and financial donations.

INN STREET PLAYGROUND/MARKET LANDING/BULLNOSE

| Safety Issues | Other repairs and/or cosmetics | Actions taken |
|---|--|---|
| <ul style="list-style-type: none"> Needs leaf removal from play surface Brick trip hazards throughout pedestrian mall | <ul style="list-style-type: none"> Missing steering wheel on play structure Park perimeter looks barren, needs landscaping Fountain needs repair, new filter system, grade changes to divert storm water Benches mismatched and aging; could use replacement | <ul style="list-style-type: none"> Coordinating design for landscaping perimeter of play area Secured \$200,000 for fountain repairs, landscaping, site furniture |

NEEDS AT INN STREET



Aging brickwork presents tripping hazards throughout the area.



The historic fountain has not functioned for several years due to an inadequate filtration system and problems with storm water contamination. A new project in coordination with the Office of Planning and Development aims to improve filtration and area storm water drainage to make the fountain functional. The project will also add interactive components to the fountain deck and make other repairs and enhancements to the site.



Removal of park vegetation leaves the area looking bare and unattractive.

JASON SAWYER PLAYGROUND

| Safety Issues | Other repairs and/or cosmetics | Actions taken |
|---|--|--|
| <ul style="list-style-type: none"> • Trip hazard near entrance, needs additional surfacing | <ul style="list-style-type: none"> • Broken game table • Chess boards rusting • Paint needs touching up: track ride, hand rails, green bar over slide, etc. • Need snow fence behind climbing net • Need new swing chains • Basketball court needs resurfacing • Need new volleyball net • Need new pavilion | <ul style="list-style-type: none"> • Removed dangerous pavilion structure • Implemented net climber maintenance procedures |

JOPPA PARK

| Safety Issues | Other repairs and/or cosmetics | Actions taken |
|--|--|---|
| <ul style="list-style-type: none"> • Perpetual sink holes in walkway by seawall create safety concern; walkway needs to be replaced | <ul style="list-style-type: none"> • Grass showing weeds and bare spots • Benches need replacement • Central garden needs renovation • Water Street sidewalk in poor condition | <ul style="list-style-type: none"> • Working with State Dept of Fish and Game to replace boat ramp • Funding approved by CPC for creation of interpretive panels • Funding approved for benches, bench plazas through Mayor Gayden W. Morrill Charitable Foundation and CPA • Rose hedge being maintained with Parks Conservancy funding • Worked with volunteer landscaper to begin lawn improvement program • Consulting with Seaport Advisory Council about possible funding for walkway |

NEEDS AT JOPPA PARK



Above Left: Joppa Park walkway is prone to sinkholes and needs to be replaced. Above right: benches are old & damaged and need repair and/or replacing.

MARCH'S HILL

| Safety Issues | Other repairs and/or cosmetics | Actions taken |
|---|--|---|
| <ul style="list-style-type: none"> • Stair landings falling apart; stairs a hazard | <ul style="list-style-type: none"> • Basketball court cracked • Needs two new basketball rims & one net • Signpost needs painting | <ul style="list-style-type: none"> • Consulting with Planning Office about reconfiguration of park entrance in conjunction with Rail Trail extension project |

MOSELEY WOODS

| Safety Issues | Other repairs and/or cosmetics | Actions taken |
|---|--|--|
| <ul style="list-style-type: none"> Needs more wood fiber safety surfacing around all play structures | <ul style="list-style-type: none"> Some benches and picnic tables warped, need new planks Stone wall damaged Erosion problems along waterfront pathways Lawn could use renovation, deep ruts Broken split rails on trail near Pavilion Stove pipe should be removed or planted to discourage use as a grill under pine trees Bubbler could use painting Touch up paint needed on central play structure Kiosk needs re-shingling Trash at pavilion a perpetual problem; could use trash can Need barrier to keep cars off front lawn Telephone pole abandoned on side lawn Stone dust walkway needs to be removed from lawn | <ul style="list-style-type: none"> Invasive vines removed from property line Consulting with round-a-bout contractor re: lawn repair-improvement |

NEEDS AT MOSELEY



An old grill base collects trash and encourages use of fire where fires are prohibited - should be removed.



Synthetic planks on this and other picnic tables and benches are warped and need replacing.



Portions of the central climbing structure need touch up paint.



Additional wood fiber safety surfacing is needed around all play structures.

PERKINS PARK

| Safety Issues | Other repairs and/or cosmetics | Actions taken |
|--|--|---|
| <ul style="list-style-type: none"> One dugout bench broken, sharp edge Safety surfacing needed | <ul style="list-style-type: none"> Equipment replacements needed: two spring toys; ship; fire truck Playground grass areas needs replacement, fertilizing and maintenance Ball field grass slope needs repair Too much signage is an eyesore Benches need cleaning Park sign rotting, needs replacement Cracked swing chains on tire swing Tire swing support beam needs repainting Graffiti on port-o-potty shed; consider securing shed with doors Storage box next to shed needs painting, needs new lid Plantings on slope side of tennis court need weeding Chain link fence bowing out at basketball court Need to lock gate, evidence of tire tracks on basketball court Need new sandbox sand Ball field backstop needs touch up paint, re-securing Need to remove old infield infill pile from walkway Remove abandoned pallet from walkway Need new facing board on sandbox structure All equipment needs touch up paint New swing belts | <ul style="list-style-type: none"> Fence capping added around ball field Bubbler repaired |

NEEDS AT PERKINS



Sandbox needs a fresh supply of sand.



Sandbox structure needs additional structural repairs.

NEEDS AT PERKINS



Missing play structures (right) and ragged landscaping gives the park an un-cared for look.



A storage box next to the shed needs painting and a new lid.



The declining sand box structure and park entrance cupola were shored up, given new decking and new shake shingle roofs, but the park entrance sign still needs replacement.



Backstop needs some fence repair.

IMPROVEMENTS AT PERKINS



Damaged dugout bench presents cutting hazard.



New tennis were recently donated.

SKATE PARK

| Safety Issues | Other repairs and/or cosmetics | Actions taken |
|---------------|--|--|
| | <ul style="list-style-type: none"> | <ul style="list-style-type: none"> Repairs made to Small Bowl, Flat Bowl, Large Bowl included: <ul style="list-style-type: none"> Saw cut behind steel coping Caulk all cuts (thin caulk and saw cut) Cleaned, prepped and patched all spalled, chipped areas of concrete in the three pools. Caulked all cracks & welds on steel coping Repaired cracking and spalling along all cold joints Repaired drainage issue in Small Bowl Repaired heaved flat bottom area in Large Bowl |

THREE ROADS

| Safety Issues | Other repairs and/or cosmetics | Actions taken |
|---------------|--|---------------|
| | <ul style="list-style-type: none"> Twigs and brush need to be raked Water trough needs painting Trees and bushes could use mulch to make the park look more well-kept Could use removal, replacement of plantings around memorial Bench could use refinishing | |

TRACY SQUARE

| Safety Issues | Other repairs and/or cosmetics | Actions taken |
|---------------|--|---------------|
| | <ul style="list-style-type: none"> Benches need refinishing Entrance garden beds need mulch Leaves need to be removed | |

NEEDS AT TRACY SQUARE



Park needs some TLC to look well-kept: benches need refinishing; leaves need to be raked; entrance garden beds needs mulching, possibly re-landscaping.

WOODMAN PARK

| Safety Issues | Other repairs and/or cosmetics | Actions taken |
|--|---|--|
| <ul style="list-style-type: none"> • Tripping hazards in brick walkway • Court needs leaf removal • Basketball court cracked • Landscaping ties around parking lot rotted, rebar exposed | <ul style="list-style-type: none"> • Play area needs leaf removal • Climbing structures need touch up (red & tan, steering wheels, handrails, steps) • Climbing structures and picnic tables mildewed • Need new basketball rim • Trash can looks dilapidated • Baseball infield overgrown • Nu-oak benches need cleaning • One sound tube broken off • Sound toy missing one end • Need new swing chains, hardware • Need one basketball hoop and net | <ul style="list-style-type: none"> • Repaired broken play equipment • Repaired ruts in parking lot in partnership with Newburyport Youth Soccer Assoc. |

NEEDS AT WOODMAN



A bench by the basketball court is dilapidated and needs replacement.



Cracks in the basketball court present safety concerns for players.



One sound tube is broken off. Photo on left shows what it should look like. On right is what remains of the damaged play piece.

NEEDS AT WOODMAN



Several dislodged bricks in the walkway, like the one above, present tripping hazards.



Some portions of the climbing structures have been repainted, but many components still need cleaning and touch up paint.



The baseball infield is full of weeds and needs an overhaul. The backstop was removed due to its deteriorated state.



Landscaping timbers that border the parking lot are rotted with exposed rebar presenting a protrusion hazard, need replacement.

IMPROVEMENTS AT WOODMAN



The field, renovated in partnership with Newburyport Youth Soccer Association, continues to look well-maintained.