

270 Water Street    Atkinson Common    Atwood Park    Ayers Playground    Bartlet Mall  
Bradley Fuller Park    Brown Square    Brown School Playground    Cashman Park    Cherry Hill Fields  
Clipper City Rail Trail    Cornelius Doyle Triangle    Cushing Park    Inn Street    Jason Sawyer  
Playground    Joppa Park    March's Hill    Market Square Bullnose    Moseley Woods    Moulton  
Square    Patrick Tracy Square    Perkins Park    Skate Park    Washington Park    Woodman Park



# NEWBURYPORT PARKS INSPECTIONS REPORT

Lisë Reid, Director  
Newburyport Parks

FALL 2019

---

## ***Executive Summary***

The Parks Department continues to make steady progress toward addressing Parks Commission priorities and residents' concerns for our 25 parks. The report that follows represents significant achievements of Parks Department staff. While sustaining a high caliber of regular landscape maintenance, we have also made strides in completing critical special projects and capital improvements.

Since the hiring of a full-time Parks Director in 2014 we have seen a marked increase in quality of service and cost savings as we have brought many tasks in-house, moving away from a contractor-based workforce. We continue to purchase equipment which allows us to provide added services while functioning more efficiently.

While we are proud of our many achievements, we admit we are challenged to fully meet parks operations demands because we require more manpower in order to do so. We are grateful for the support of the Mayor and City Council in building a Parks Department and are excited to acknowledge that we are one-third of the way toward a fully staffed department.

## **2019 ACCOMPLISHMENTS**

---

### **Park Improvement Projects**

The Parks Department managed many parks improvement projects in 2019:

- Creation of 55,000 square feet of fully-irrigated, new parks space at the central waterfront;
- Accessible swings installed at all playgrounds; additional swing installations ongoing;
- Design-engineering of Phase II improvements at Bradley Fuller Park;
- Restoration of a youth baseball field at Woodman Park;
- Addition of model green infrastructure to Cushing Park via landscape buffer and rain gardens;
- Completion of design & contracting in coordination with State Department of Fish & Game for boat ramp replacement and parking improvements at Joppa Park;
- Initial brick work at Patrick Tracy Square;
- Completion of critical masonry repairs to elevated walkway on Inn Street;
- Brick work and drainage improvements to lower Inn Street plaza in partnership with local business;
- Addition of synthetic lawn, landscape fencing & new plantings around Inn Street playground;
- Completion of 200 feet of seawall walkway replacement at Joppa Park;
- Renovation of central garden in older section of Atwood Park;
- Procurement of Master Plan design services for Lower Atkinson Common improvements addressing critical parking safety issues and aging facility needs;
- Execution of a complete renovation of the historic Lily Ponds at Atkinson Common including underground & pump house plumbing and total renovation of the pond bowls;
- Bench renovations at Patrick Tracy Square, Inn Street, Byron's Court, Cushing Park and Ayer's Playground;

- Introduction of "Green Spine" concept throughout the city parks system adding lower maintenance labor needs and becoming a "greener" city by increasing native species in an aesthetically pleasing manner; launched program with plantings at Atkinson Common to decrease bed maintenance;
- Banning of Roundup used in all properties managed by the Parks Department. Piloted 100% organic lawn care and plant health care;
- Completion of Cornelius Doyle Triangle renovations with time, materials and financial donations from Brad Kutcher, Governors Academy Senior Class volunteers, Newburyport Parks Conservancy and the Massachusetts State Historical Records Advisory Board.;
- Coordination, plant procurement and planting of Morrill Ridge Outdoor Learning Center at NHS;
- Renovation of basketball court and installation of new lawn areas at Bartlet Mall;
- Creation of Butterfly Garden (recognized by National Wildlife Federation as a Certified Wildlife Habitat) supported entirely by volunteers.

### **Volunteers & Park Advocates**

Volunteers serve our parks by performing improvements and maintenance tasks including weeding, trimming, cleanups, garden design, planting, mobile irrigation, one time parks cleanups, fall cleanups, counts of park users, and catering for work crews. Volunteers help us provide the community with annual events and also populate our Parks Commission. Volunteers come to us from corporate groups, community groups, the senior tax work program, Parks Support-a-Spot program and student volunteer programs.

### **Impact of Drought**

The 2016-17 drought took a significant toll on city parks. We estimate we lost 30% of turf and 10% of plantings in parks city-wide as a result of the drought. Lasting effects include negative impacts to tree health. Two years later, we are experiencing an increase in the need for pruning and removals of hazardous trees as a result.

### **Climate Change and Resiliency**

The Parks Department and Commission will continue to be impacted by issues related to climate change in two main ways:

1. Public parks present ideal opportunities for helping to mitigate the impacts of climate change and resiliency. We will continue to look for ways to mitigate storm water runoff and improve infiltration (such as the model rain garden project at Cushing Park parking lot), reduce urban heat island effect as average temperatures increase, and
2. Look at solutions for our waterfront parks as sea levels rise thereby threatening recreational uses as well as infrastructure located in our parks.

## **2020 OPERATIONS OUTLOOK**

---

### **Capital Projects**

- Complete construction of Fuller Field Phase II Improvements
- Secure funding for construction of an inclusive playground at Bartlet Mall
- Complete replacement of dangerous walkways at Bartlet Mall along Auburn, Greenleaf and Pond Streets
- Finish renovation of basketball court at Bartlet Mall

- Complete replacement of Joppa Park boat ramp & parking improvements
- Complete replacement of Joppa Park seawall walkway
- Further address brick work to reduce tripping hazards on Inn Street
- Complete construction and installation of landscape fence on Inn Street & addition of new plantings
- Add decorative tree lighting to Inn Street & Patrick Tracy Square
- Re-design & plant entry garden beds at Patrick Tracy Square; add chess tables, cigarette butt receptacles & one bench
- Secure funding for and replace root-damaged sections of Clipper City Rail Trail I
- Initiate fundraising and planning for landscape improvements at 270 Water Street
- Address safety issues, cracked play surface at Cashman Basketball Courts

### **Playgrounds**

- We have made strides bringing our 9 Playgrounds into compliance with federal safety guidelines including:
  - Adding impact attenuating surfacing materials, critical to reducing the likelihood of serious injuries (**Adding more safety surfacing to our playgrounds will continue to be a top maintenance priority**);
  - Identifying and correcting any new conditions that cause Priority 1, 2 and 3 safety concerns.
- Aging playgrounds (an average of 16 years old) continue to require repairs and challenge safety compliance.
- Regular inspections and repairs will keep playgrounds in compliance.
- ADA compliance and inclusion will be the focus as playgrounds are improved.

### **Maintenance is Key**

As you will see from the following “to do” lists for each park, many lawns need renovation and fertilization programs, aging play structures need new parts and walkways need repair; even the relatively new Clipper City Rail Trail Phase I is showing signs of age and will need sections replaced this year to avoid hazardous conditions. Extensive, ongoing tasks such as tree work and brick work will progress as resources allow. It is essential to utilize dedicated parks staff to allow us to be responsive to residents’ needs and pro-active in maintaining the improvements we make, to avoid costly, larger-scale repairs in future.

## 270 Water Street

Safety Issues	Other repairs and/or cosmetics	Actions taken
<ul style="list-style-type: none"><li>•</li></ul>	<ul style="list-style-type: none"><li>• Lawn is in need of renovation</li><li>• Install irrigation</li><li>• Seating, shade &amp; additional plantings would enhance the space</li></ul>	<ul style="list-style-type: none"><li>• Parks has developed a cost estimate to add new plantings and an irrigation system to support establishment of plantings and lawn improvements.</li></ul>

### NEEDS AT 270 WATER



*The lawn at 270 Water Street needs renovation. Establishing a lawn and landscape plantings requires irrigation, which was not included when the park was renovated. The Parks Department is seeking funding in FY21 to install irrigation.*

## ATKINSON COMMON

Safety Issues	Other repairs and/or cosmetics	Actions taken
	<ul style="list-style-type: none"> <li>• Gazebo needs work:               <ul style="list-style-type: none"> <li>◦ staining; roof needs pressure washing</li> <li>◦ sill is rotting; requires replacement</li> <li>◦ stone stairs need masonry work</li> <li>◦ overgrown vegetation damaging woodwork</li> </ul> </li> <li>• Dumping a problem behind Plummer Ave residences encroaching on park</li> <li>• Clean up around shed incl. wood pile</li> <li>• Remove brush pile from back of park</li> </ul>	<ul style="list-style-type: none"> <li>• Repaired Lily Pond plumbing underground &amp; in pump house; resurfaced &amp; sealed pond bowls</li> <li>• Repaired irrigation</li> <li>• Added new plantings using parks resources, donations &amp; volunteers:               <ul style="list-style-type: none"> <li>◦ 5 new memorial trees</li> <li>◦ 400 bulbs around Volunteer statue</li> <li>◦ 125 shrubs &amp; perennials</li> </ul> </li> <li>• Removed hazardous trees</li> <li>• Ongoing tree risk assessments, tree healthcare &amp; maintenance</li> <li>• Replaced dilapidated rules signage</li> <li>• Repainted signpost</li> <li>• Removed stockpiled loam</li> </ul>

### NEEDS AT ATKINSON



*Wooden shingles on the historic gazebo need pressure washing and repainting*



*A portion of the gazebo sill is rotted and needs replacing.*

### IMPROVEMENTS AT ATKINSON



*ABOVE: Staff completely renovated the Lily Ponds in 2019 including total replacement of all underground & pump house plumbing and resurfacing and sealing of bowls. BELOW: Staff, volunteers and inmate crews have spearheaded ongoing bed maintenance.*



## ATKINSON COMMON, LOWER

Safety Issues	Other repairs and/or cosmetics	Actions taken
<ul style="list-style-type: none"> <li>• Need to address parking issues along Merrimac Street</li> <li>• Fly ball netting needs replacing to protect playground</li> <li>• Playground fence support pole loose</li> <li>• Playground needs added safety surfacing</li> </ul>	<ul style="list-style-type: none"> <li>• Asphalt needs resurfacing throughout the park</li> <li>• Move Merrimac St. entry gate, beautify entrance area</li> </ul>	<ul style="list-style-type: none"> <li>• Renovated east parking lot with new gravel surface and granite block wheel stops</li> <li>• Pioneer League purchased new picnic tables</li> <li>• Procured services to develop master plan for improvement of park</li> <li>• Seeking grants to replace and relocate playground</li> <li>• Working with Pioneer League to address improvement needs</li> </ul>

### NEEDS AT LOWER ATKINSON



*Clubhouse renovation and asphalt resurfacing will be addressed as part of the larger park renovation project. Dangerous parking conditions, as seen below, and a new playground will also be addressed. A master plan for that renovation-reconfiguration will be completed in 2020.*



### IMPROVEMENTS AT LOWER ATKINSON



*Pioneer league volunteers made many improvements in 2019: the utility shed was repaired & painted; concessions building was painted and improvements made to kitchen; new picnic tables were purchased; bleachers were repaired and repainted.*

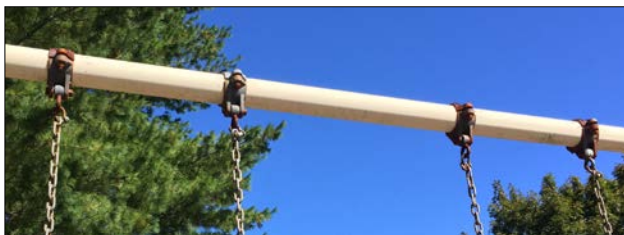
## ATWOOD PARK

Safety Issues	Other repairs and/or cosmetics	Actions taken
<ul style="list-style-type: none"> <li>Sidewalks need replacement to remove tripping hazards and meet ADA compliance</li> <li>Lack of lighting and significant tree canopy creates extra dark environment at night which encourages undesirable activity; resident survey reveals residents want lighting in the park</li> </ul>	<ul style="list-style-type: none"> <li>Central Garden needs renovation including extensive resetting-repointing of brick, removals-replacements of plantings</li> <li>Interior walkways could use replacement</li> <li>Lawn in "old" portion of park needs renovation</li> <li>Need to Remove invasive trees by basketball court</li> <li>Need to install curb stops to organize parking so staff can access sidewalk for snow clearing</li> </ul>	<ul style="list-style-type: none"> <li>Central Garden renovation is in progress; bricks removed; new plantings installed; more plantings to be installed</li> <li>Performed significant tree pruning</li> <li>Removed hazardous pine tree</li> <li>Repainted main signpost</li> <li>Renovation of existing lawn in progress in "old" portion of park</li> </ul>

## AYERS PLAYGROUND & CUSHING PARK

Safety Issues	Other repairs and/or cosmetics	Actions taken
<ul style="list-style-type: none"> <li>Install fencing at corner of Buck &amp; Congress Streets as feasible</li> <li>Swing &amp; horizontal use zones overlap; address as feasible</li> <li>Prune tree limbs in playground area to 84" above play surface</li> <li>Install advisory playground signage &amp; labeling as time allows</li> </ul>	<ul style="list-style-type: none"> <li>Repave &amp; reline basketball court</li> <li>Repaint or replace benches</li> <li>Replace all rusting hardware on play structures</li> <li>Address ADA compliance violations as improvements are made</li> <li>Touch up chipping paint on play structures</li> <li>Reinstall park dedication plaque</li> </ul>	<ul style="list-style-type: none"> <li>Corrected entrapment &amp; entanglement hazards on playground composite structure</li> <li>Installed accessible swing</li> <li>Removed spring toys (broken and overlapping use zones)</li> <li>In process of renovating benches; 3 are completed;</li> <li>Repainted main signposts</li> <li>Removed hazardous landscape ties</li> <li>Ordered fencing along Buck &amp; Congress Sts</li> <li>Added safety surfacing</li> </ul>

## NEEDS & IMPROVEMENTS AT AYERS & CUSHING



*ABOVE: Serious safety hazards were addressed but the aging playground still needs new hardware and touch up paint.*

*BELOW: The basketball court and hopscotch play surface is in disrepair.*



**BEFORE**

*Three of seven benches have been refurbished.*



**AFTER**

## BARTLET MALL/FROG POND

Safety Issues	Other repairs and/or cosmetics	Actions taken
<ul style="list-style-type: none"> <li>• Install advisory playground signage &amp; labeling as time allows</li> <li>• Pond water quality poor; potentially hazardous to people and pets</li> </ul>	<ul style="list-style-type: none"> <li>• Touch up paint on stairs &amp; lamp posts</li> <li>• Touch up paint fence along High Street</li> <li>• Track ride has mildew, needs cleaning</li> <li>• Repair or replace central fountain</li> <li>• Correct pond advisory signage</li> <li>• Prune trees as needed</li> <li>• Manage walkway weeds including granite edging along High St. promenade</li> <li>• Replenish walkway fill where needed</li> <li>• Better compact loose fill walkway</li> <li>• Replace dilapidated walkways along Auburn, Greenleaf and Pond</li> <li>• Grind 8 tree-trunks</li> <li>• Replace all rusting hardware on play structures</li> <li>• Address ADA compliance violations as improvements are made</li> <li>• Finish basketball court painting</li> <li>• Remove unauthorized cherry trees</li> </ul>	<ul style="list-style-type: none"> <li>• Removed 7 hazardous trees; extensive pruning of hazardous deadwood</li> <li>• Basketball court renovation 90% done</li> <li>• Repainted main signposts</li> <li>• Added safety surfacing</li> <li>• Removed trees overhanging playground</li> <li>• Repaired crater between courthouse and playground</li> <li>• Hazardous floating dock removed</li> <li>• Refinished benches</li> <li>• Cleared 95% of debris, invasive plants from pond edge and water lilies</li> <li>• Began regular mowing of slopes</li> </ul>

## NEEDS & IMPROVEMENTS AT BARTLET MALL



Above: Basketball court surface was replaced with a half-court sized new asphalt surface. It will be painted green and lined for basketball in spring 2020.



A feasibility study revealed that the Frog Pond appears to be suffering from eutrophication—induced poor water quality, as indicated by the presence of extended blooms of blue-green algae. The Parks Commission is currently seeking a cleanup solution.

**BRADLEY FULLER PARK**

Safety Issues	Other repairs and/or cosmetics	Actions taken
	<ul style="list-style-type: none"> <li>Phase 2 – grandstands, parking</li> <li>Improve turf on north field</li> <li>Repair north field irrigation system</li> <li>Remove old, hazardous climbing equipment from north field</li> </ul>	<ul style="list-style-type: none"> <li>Installed fencing around facility</li> <li>Phase II design-engineering in progress; winter 2020 completion</li> <li>Phase II construction planned for summer 2020</li> </ul>

**BROWN SQUARE**

Safety Issues	Other repairs and/or cosmetics	Actions taken
	<ul style="list-style-type: none"> <li>Lawn improvements needed.</li> </ul>	<ul style="list-style-type: none"> <li>Slice seeded lawn</li> <li>Repainted main signpost</li> <li>Installed electrical access (DPS)</li> <li>Significant tree pruning to improve access within the park</li> </ul>

**CASHMAN PARK**

Safety Issues	Other repairs and/or cosmetics	Actions taken
<ul style="list-style-type: none"> <li>Trees within play area need to be pruned up 84" above any designated play surface</li> <li>Repaint track ride to remove paint chip edges</li> <li>Adjust swings to bring height into compliance</li> <li>Install advisory signage &amp; labeling as time allows</li> <li>Walkway from Merrimack St. to river needs replacement to remove tripping hazards and meet ADA compliance</li> <li>Cracks &amp; puddles on basketball court; basketball gooseneck supports too close to court</li> <li>Off leash areas need some sort of barrier to reduce conflicts between dogs and park users</li> </ul>	<ul style="list-style-type: none"> <li>Cashman off leash lawn sparse, needs renovation</li> <li>Some granite benches could use re-setting</li> <li>Need new landscape ties</li> <li>Replace roof slat on 5-12 play structure</li> <li>2 benches tilted back need to reset footing</li> <li>Replace swing bearings &amp; any rusting hardware</li> <li>Adjust distances between tot swings to bring into compliance</li> <li>Replace warped boards on accessible ramp</li> <li>Storage shed needs carpentry repairs</li> <li>Add split rail fence to replace chain link</li> </ul>	<ul style="list-style-type: none"> <li>Corrected head entrapment hazard at ship's ladder access</li> <li>Repaired dolphin structures &amp; anchored</li> <li>Added Turface to ball field infield &amp; increased maintenance</li> <li>Removed rusted chain link fence</li> <li>Repainted sign post</li> <li>Added no dogs signage to ball field</li> <li>Purchased new door for Cashman shed</li> <li>Removal of leaves &amp; debris from tot lot added to maintenance schedule</li> </ul>

## NEEDS AT CASHMAN



*Warped ramp slats impede play structure accessibility.*



*While many landscape ties were replaced, further work needs to be done to address rotting ties.*



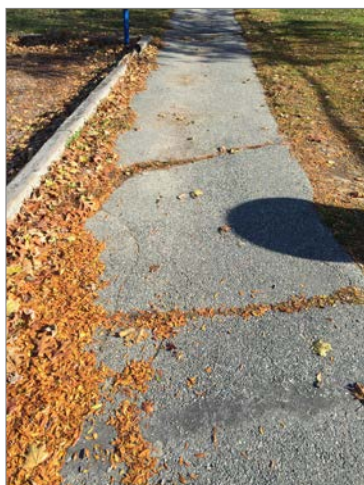
*Rusting hardware is typical at a playground of this age and will be replaced.*



*Touch up painting of playground equipment is an ongoing task at all playgrounds.*



*Picnic tables need refinishing.*



*Cracked walkways throughout the park impede accessibility.*



*Cracks on basketball court pose a safety hazard to players.*



*Basketball nets as installed are almost in play and dangerous. They should be replaced with 4' necks to move the pole off the court and pads added to the poles.*

## CHERRY HILL FIELDS

Safety Issues	Other repairs and/or cosmetics	Actions taken
	<ul style="list-style-type: none"> <li>Project completion requires installation of electric service across Daniel Lucy Way.</li> </ul>	<ul style="list-style-type: none"> <li>Completed installation of Trista Zinck Garden.</li> <li>City Working with National Grid and Ted Norton to install electric across Daniel Lucy Way.</li> </ul>



*Parks Department worked with Trista Zinck's parents to design a garden in her memory in the middle of the cul-de-sac to replace the one removed when the new soccer field was installed. New plantings (above right) will mature to a lush, colorful, three-season garden.*

## CLIPPER CITY RAIL TRAIL I

Safety Issues	Other repairs and/or cosmetics	Actions taken
<ul style="list-style-type: none"> <li>Knob on locomotive play structure is broken &amp; sharp</li> <li>High Street overpass dropping debris on trail; temporary netting installed by state; structural integrity should be monitored.</li> <li>Consider signage re: cyclists warning pedestrians of presence</li> </ul>	<ul style="list-style-type: none"> <li>Graffiti on electrical box, ongoing</li> <li>Wash &amp; wax Peace Offering sculpture</li> <li>Rebuild Will He sculpture</li> <li>Refinish benches</li> <li>Excavate and repave area where tree roots are damaging asphalt</li> <li>Develop annual maintenance plan to address further tree root damage</li> <li>Consider adding lighting to trail</li> </ul>	<ul style="list-style-type: none"> <li>Repaired fence in 3 locations</li> <li>Performed 200 hours of invasive removal</li> <li>Removed 6 hazardous trees</li> <li>Maintained same-day snow and ice clearing from edge to edge for superior level of pedestrian safety</li> </ul>

### NEEDS ON RAIL TRAIL I



*Benches need refinishing.*



*Nearing the tenth anniversary of its opening, the Clipper City Rail Trail Phase I is showing signs of aging, where tree roots have caused damage to the asphalt walkway. The sections need replacement. A tree root management plan will prevent similar future damage.*

## CLIPPER CITY RAIL TRAIL II

Safety Issues	Other repairs and/or cosmetics	Actions taken
<ul style="list-style-type: none"><li>Consider signage re: cyclists warning pedestrians of presence</li></ul>	<ul style="list-style-type: none"><li>One of the underpass “walk in the deep” sculptures (branching coral) has been pulled out of the granite wall</li><li>Consider adding lighting to trail</li></ul>	<ul style="list-style-type: none"><li>Assisted Planning Office with installation of two additional sculptures</li><li>Installed dog waste station to address dog waste issues near March’s Hill</li></ul>

## NEEDS ON RAIL TRAIL I



One of the underpass “walk in the deep” sculptures (branching coral) has been pulled out of the granite wall

## CORNELIUS DOYLE TRIANGLE

### Safety Issues

### Other repairs and/or cosmetics

### Actions taken

- Interior walkway replaced with new brick walkway
- Installed two new benches
- Plantings renovated
- Memorial refinished
- Pruned trees
- Removed hazardous trees
- Installed new trees



*Many improvements including brick walkways, new plantings and memorial renovation took place at Cornelius Doyle Triangle thanks to volunteers, donated services from Brad Kutcher, the Newburyport Parks Conservancy and grant funding from the Massachusetts State Historical Records Advisory Board.*



## INN STREET PLAYGROUND/MARKET LANDING/BULLNOSE

Safety Issues	Other repairs and/or cosmetics	Actions taken
<ul style="list-style-type: none"> <li>Needs ongoing leaf removal from play surface</li> <li>Brick trip hazards throughout pedestrian mall</li> <li>Install advisory signage &amp; labeling at playground as time allows</li> </ul>	<ul style="list-style-type: none"> <li>Missing steering wheel on play structure</li> <li>Elevated walkway bricks need repointing</li> <li>Old benches need refurbishing throughout</li> </ul>	<ul style="list-style-type: none"> <li>Corrected head entrapment hazard</li> <li>Funded 6 new benches through the Newburyport Parks Conservancy</li> <li>Installed landscape fencing around garden beds to protect new plantings at playground</li> <li>Extensive brickwork and drainage improvement was done by private donation to one plaza area.</li> <li>Repaired &amp; refaced one concrete column for elevated walkway with structural repair mortar.</li> <li>Repaired anchoring cement at base of handrail posts on elevated walkway stairwell.</li> <li>Cleaned &amp; resurfaced cracked &amp; spalling concrete areas on elevated walkway.</li> <li>Pressure washed and spray-sealed entire elevated walkway.</li> <li>Playground was pressure washed as a donation.</li> </ul>

## NEEDS AT INN STREET



*ABOVE: Aging brickwork presents tripping hazards throughout the area.*

## IMPROVEMENTS AT INN STREET



*Six more new benches have been installed on Inn Street around the fountain and in the Byron's Court area.*



*A new landscape fence protects new plantings around playground.*



*A dirt lot where trees had been removed was replaced with synthetic turf.*



*Extensive brickwork and drainage improvement was done by private donation to one plaza area. Parks Dept has also made improvements to the elevated walkway, stairwells and columns.*

## JASON SAWYER PLAYGROUND

Safety Issues	Other repairs and/or cosmetics	Actions taken
<ul style="list-style-type: none"> <li>• Trip hazard near entrance</li> <li>• Needs 80 yards additional safety surfacing</li> <li>• Install advisory signage &amp; labeling as time allows</li> <li>• Repair accessible walkway</li> <li>• Sand, touch up chipped paint</li> <li>• Tighten climbing net</li> </ul>	<ul style="list-style-type: none"> <li>• Paint needs touching up: track ride, hand rails, green bar over slide, etc.</li> <li>• Need snow fence behind climbing net</li> <li>• Install new swing chains</li> <li>• Replace rusting hardware</li> <li>• Replace shade structure</li> <li>• Repair broken game table, replace chess board surfaces where rusting</li> </ul>	<ul style="list-style-type: none"> <li>• Repaired bench with exposed screw tip</li> <li>• Received estimates for additional safety sand; will request funding in FY21</li> </ul>

### NEEDS AT JASON SAWYER PLAYGROUND



*Aging painted surfaces can present sharp edges, need sanding & painting.*



*Added safety surfacing will also address a tripping hazard presented by exposed geotextile.*



*Game table needs repairs and new game surface.*



*Aging swing chains need replacement*



*The ocean front location is tough on wear and tear of hardware.*

## JOPPA PARK

Safety Issues	Other repairs and/or cosmetics	Actions taken
<ul style="list-style-type: none"> <li>Perpetual sink holes in walkway by seawall create safety concern; walkway needs to be replaced</li> </ul>	<ul style="list-style-type: none"> <li>Boat ramp needs replacement</li> <li>Parking lot would benefit from Parks Commission's beautification plans</li> </ul>	<ul style="list-style-type: none"> <li>Boat Ramp replacement scheduled for May 1, 2020</li> <li>Secured additional grant funding from The Mayor Gayden W. Morrill Charitable Foundation to complete walkway replacement.</li> <li>Installed 200 linear feet of seawall walkway</li> </ul>

### NEEDS AT JOPPA PARK



*Above Left: Joppa Park walkway is prone to sinkholes and needs to be replaced. Construction will involve excavation of the old walkway, filling of voids in the riprap that supports the sea wall, installation of geo-textile, backfilling and surfacing with brick pavers. The project has been permitted through the Conservation Commission and is now fully funded by The Mayor Gayden W. Morrill Charitable Foundation.*

### IMPROVEMENTS AT JOPPA PARK



*The Parks Department replaced 200 linear feet of the seawall walkway funded by The Mayor Gayden W. Morrill Charitable Foundation.*

## MARCH'S HILL

Safety Issues	Other repairs and/or cosmetics	Actions taken
	<ul style="list-style-type: none"> <li>Consider alternatives for accommodating seasonal wet area</li> </ul>	<ul style="list-style-type: none"> <li>Rail Trail construction complete resulting in improved, safe access to park (Planning Dept)</li> <li>Repainted signpost</li> <li>Installed dog waste station to address ongoing dog waste littering issues</li> </ul>

### IMPROVEMENTS AT MARCH'S HILL



*The dangerous condition of access to March's Hill was corrected in conjunction with the installation of Clipper City Rail Trail II and its proximity to the park.*

## MOSELEY WOODS

Safety Issues	Other repairs and/or cosmetics	Actions taken
<ul style="list-style-type: none"> <li>Tree hazards exist throughout park, some tables and benches should be relocated to less hazardous areas. Tree management tasks in progress</li> <li>Install advisory signage and labeling as time allows</li> </ul>	<ul style="list-style-type: none"> <li>Serious erosion issues along waterfront pathways</li> <li>Bathroom needs renovation, new toilet</li> <li>Some benches and picnic tables warped, need new planks</li> <li>Stone wall damaged</li> <li>Lawn needs renovation, deep ruts</li> <li>Stove pipe should be removed or planted to discourage use as a grill under pine trees</li> <li>Touch up paint needed on central play structure</li> <li>Kiosk needs re-shingling, review rules</li> </ul>	<ul style="list-style-type: none"> <li>Installed additional safety surfacing</li> <li>Continued with prioritized tree management tasks</li> <li>Removed 20 high-risk, hazardous trees</li> <li>Replaced belt swing seats</li> <li>Removed abandoned telephone pole on side lawn (DPS)</li> <li>Repaired broken fence resulting from storm damage</li> <li>Replaced ADA compliant swing seat; added one more</li> <li>Performed extensive invasive removal throughout park, ongoing</li> <li>Removed stone dust walkway from lawn</li> </ul>

## NEEDS AT MOSELEY



*An old grill base collects trash and encourages use of fire where fires are prohibited - should be removed.*



*Portions of the central climbing structure need touch up paint.*



*Synthetic planks on this and other picnic tables and benches are warped and need replacing.*



*Trees are in constant need of care especially at Moseley Woods where there are so many of them. The Parks Department addresses prioritized needs identified by the tree management plan as well as unanticipated tree hazards.*



*Front lawn was badly damaged by construction activities for the Merrimac Street roundabout project. Lawn renovations still on hold based on available resources.*

## PERKINS PARK

Safety Issues	Other repairs and/or cosmetics	Actions taken
<ul style="list-style-type: none"> <li>One dugout bench broken, sharp edge</li> <li>Repair Beacon Street gate to block vehicular access</li> <li>Add guardrails to sandbox to comply with safety guidelines</li> <li>Adjust swing hanging elements to comply with safety guidelines</li> <li>Install safety advisory signage and labeling as time allows</li> </ul>	<ul style="list-style-type: none"> <li>Equipment replacements needed: two spring toys; ship; fire truck</li> <li>Playground grass areas needs renovation</li> <li>Re-locate landscape ties to correct slide use zone non-compliance</li> <li>Repair Beacon Avenue sidewalk</li> <li>Ball field grass slope needs repair</li> <li>Cracked swing chains on tire swing</li> <li>Tire swing support beam needs repainting</li> <li>Ball field backstop needs touch up paint, re-securing</li> <li>Repair fascia board on sandbox structure</li> <li>Touch up paint play equipment</li> <li>Replace rusting hardware</li> <li>Need new trash can</li> </ul>	<ul style="list-style-type: none"> <li>Addressed head entrapment hazard at sandbox</li> <li>Installed new safety surfacing</li> <li>Installed new storage shed (courtesy NYS)</li> <li>Fixed chain link fence bowing out at basketball court</li> <li>Clean lichen off park benches</li> <li>Performed significant weeding &amp; pruning to improve park access</li> <li>Removed downed tree</li> <li>Restored park sign</li> </ul>

## IMPROVEMENTS AT PERKINS



Park sign restored. ABOVE: Before. BELOW: After.



Benches cleaned. ABOVE: Before. BELOW: After.



Chain link fence at basketball court repaired.

## NEEDS AT PERKINS



*Sandbox needs added guardrails to meet federal safety guidelines.*



*Several landscape ties need to be replaced.*



*Slide use zone is non-compliant with federal safety standards and should be corrected.*



*The lawn is sparse throughout the playground area and needs renovation.*



*Ballfield backstop needs repairs, touch up painting.*



*Dilapidated chain link fence needs repair and/or replacement.*



*(Above and left) Beacon Avenue sidewalk and walkways within the park need replacement to improve accessibility.*

## SKATE PARK

Safety Issues	Other repairs and/or cosmetics	Actions taken
	<ul style="list-style-type: none"> <li>Ongoing concrete and coping repairs needed</li> <li>Bowls do not drain properly; a result of the way it was constructed</li> <li>Need more manpower to keep up with trash removal demands</li> </ul>	<ul style="list-style-type: none"> <li>Made critical safety repairs to fence</li> </ul>

## PATRICK TRACY SQUARE

Safety Issues	Other repairs and/or cosmetics	Actions taken
	<ul style="list-style-type: none"> <li>Entrance garden beds need mulch, renovation</li> <li>Bricks need resetting around tree wells</li> <li>Memorial needs refinishing</li> </ul>	<ul style="list-style-type: none"> <li>Refinished 3 benches</li> <li>Replaced 800 square feet of brick plaza</li> <li>Secured funding for one more new bench; chess tables and new plantings</li> </ul>

### NEEDS AT TRACY SQUARE



*The square needs some TLC to look well-kept: entrance garden beds needs re-design.*

### IMPROVEMENTS AT TRACY SQUARE



*Three benches were refinished at Patrick Tracy Square and 800 square feet of bricks were replaced. Future bench installations and brick work is planned.*

## WOODMAN PARK

Safety Issues	Other repairs and/or cosmetics	Actions taken
<ul style="list-style-type: none"> <li>Reset brick walkway to remove trip hazards</li> <li>Roots create tripping hazards throughout</li> <li>Basketball court cracked</li> <li>Reset flexible climbing net so base is installed below grade; non-compliance may be resolved by added safety surfacing</li> <li>Replace cracked flex climber chain</li> <li>Add advisory signage and labeling as time allows</li> <li>Prune up trees near basketball court</li> </ul>	<ul style="list-style-type: none"> <li>Install new trash can</li> <li>Replace missing sound toy</li> <li>Replace swing hangers</li> <li>Clean &amp; touch up paint play structures as needed</li> <li>Replace rotting steps</li> </ul>	<ul style="list-style-type: none"> <li>Added safety surfacing</li> <li>Renovated baseball field</li> <li>Installed ball field fencing</li> <li>Removed hazardous bench by basketball court</li> </ul>

## NEEDS AT WOODMAN



*Some portions of the climbing structures have been repainted, but many components still need cleaning and touch up paint.*



*Several dislodged bricks in the walkway, like the one above, present tripping hazards.*



*Cracks in the basketball court present safety concerns for players.*